

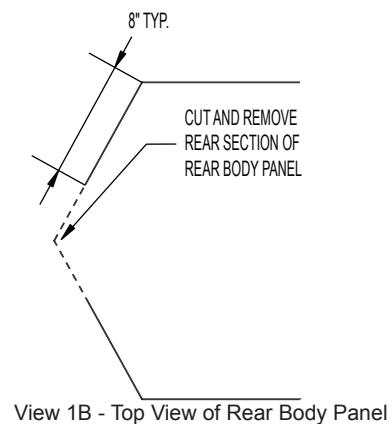
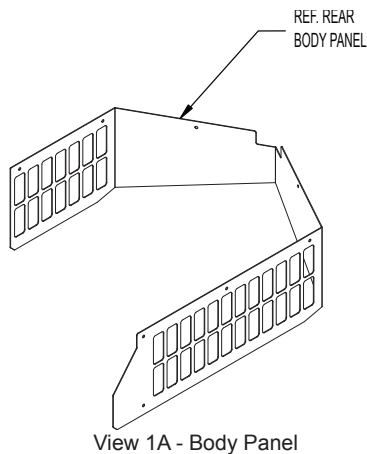


**A51 POWER DUMP KIT 10.0 for MD/MT**

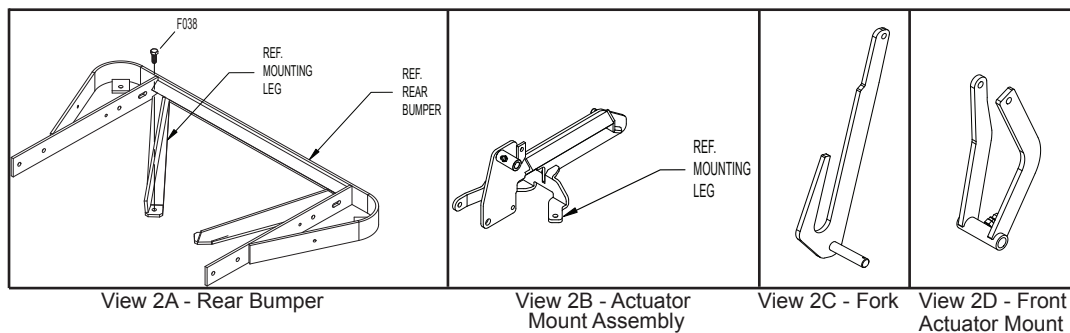
**DESCRIPTION:** This kit is offered to install the Power Dump in the field on Models MD/MT that have a 10.0 bushel catcher S/N 100982 and on. The power dump affords the operator the convenience of emptying the catcher box without leaving the operator's seat by using a switch mounted to the front right of the seat.

**INSTRUCTIONS:**

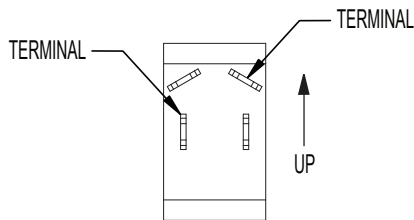
1. Remove rear body panel (see View 1A) from catcher support frame. Cut out rear portion of body panel (see View 1B). Note: On some tractors the body panel may already be cut as shown in View 1B.



2. Remove the two (2) bolts that secure angle braces for rear bumper (see View 2A). Position the actuator mount assembly (View 2B), fork (View 2C), and front actuator mount (View 2D), as shown in parts breakdown. Attach actuator mount assembly to the upright mount on the tail wheel bearing housing (View 2E) using only the top bolt shown in parts break down. Using new bolts, attach mounting legs on rear bumper (that were removed in first part of this instruction) including the mounting legs for the actuator mount assembly, as shown in parts breakdown.

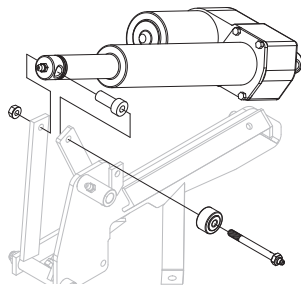


3. Rotate top of fork to the rear of mower and place roller wheels into the RH and LH channel angles coming in from the bottom. Install remaining bolts at the bottom of the channel angles. Reattach gas spring that was removed earlier to tab on LH channel angle, as shown in parts breakdown.
4. Install rear mount of linear actuator onto pin of actuator mount assembly (View 2B) and secure with F134 washer and F068 cotter pin, as shown in parts breakdown.
5. Mount lift control switch in front body hole. Mount switch as shown in View 3. Install wire harness from linear actuator to lift control switch along main wire harness using wire ties provided with kit. Attach black wire to chassis ground and red wire to fused side of circuit breaker. Reinstall the circuit breaker insulated cover. Secure the wires using a cable tie if needed to ensure they will not rub. Connect the harness to control switch and actuator motor. Check operation of actuator, pushing down on switch should extend ram of actuator. Attach decal to front body next to switch.



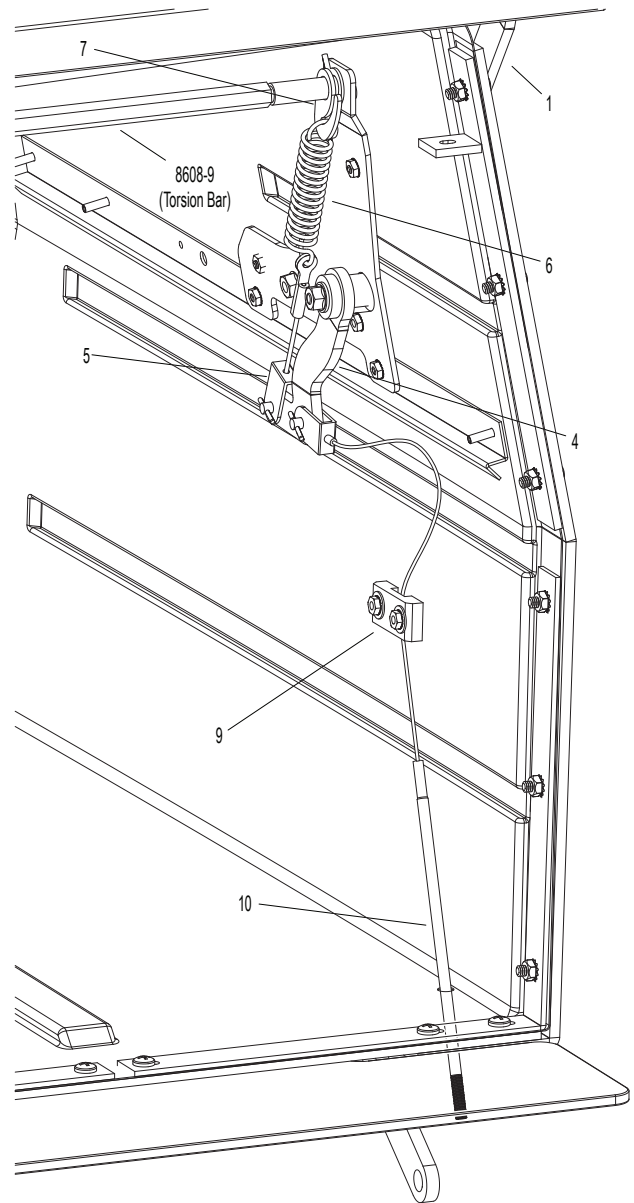
View 3- View of Switch Back on Inside of Tractor

6. Extend ram of actuator to maximum length. Insert pivot tube and spacer (View 4) into end of ram and position ram in front actuator mount (View 4). Install bolt and roller bearing (View 4). Lower catcher box and check operation of lifting action.



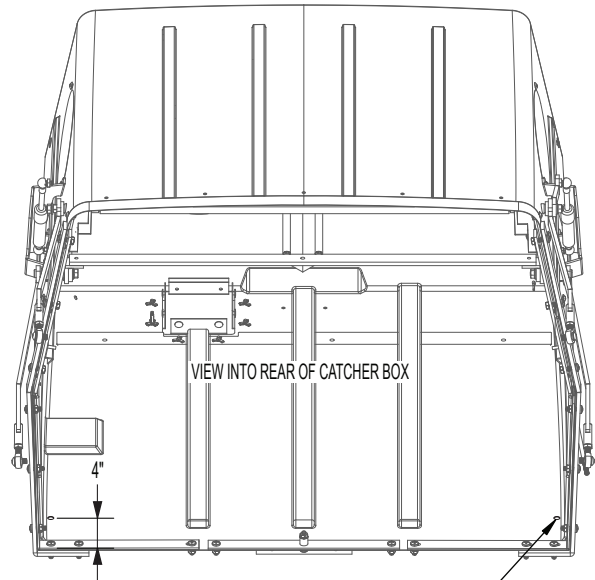
View 4 - Installing Pivot Tube and Spacer on Actuator, and Bolt and Roller Bearing on Actuator mount

7. Remove the cotter pins on both ends of the torsion bar (inside catcher box) (View 5). Insert spring hook ends on both ends of torsion bar and reinstall bar with new cotter pins.
8. Remove existing lower arms (outside of catcher box) and install new arms on both sides.



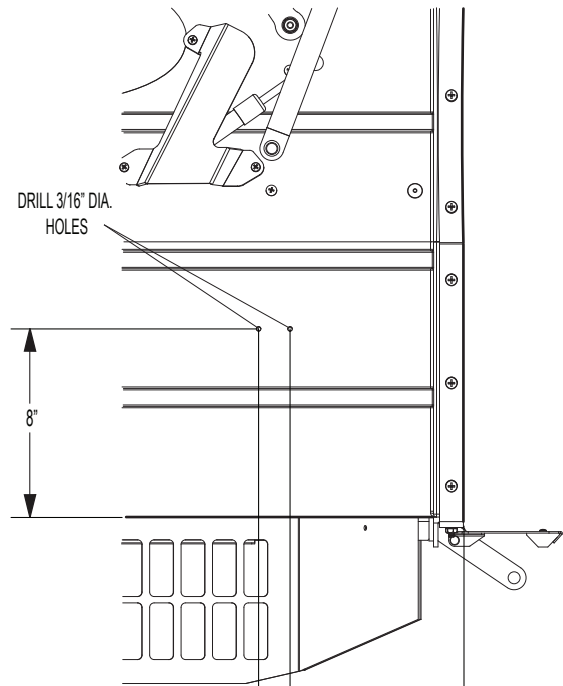
View 5 - Mounting Sequence for Door Actuator Arms

9. Install new actuator arms on both sides and orient each one as shown in parts breakdown.
10. Assemble door springs to spring hooks (attached to torsion bar) and attach extension spring clevis end to door actuator, as shown in View 5.
11. Attach cable assembly to door actuator arms with clevis pin, as shown in View 5. Drill two 3/8" holes in the grass catcher bottom, as shown in (View 6) and install threaded end of cable assembly through each hole. Attach ball joints to cable ends. Attach ball joints to bumper strap.
12. Tilt the catcher to the full back position using the dump switch. Check the tension of both cables. The tension should be equal. Adjust accordingly with the ball joints. Tighten the jam nuts.
13. Drill holes in both sides of the catcher box (as shown in View 7) to install cable guides inside catcher. Install guides on both sides, as shown in parts breakdown.



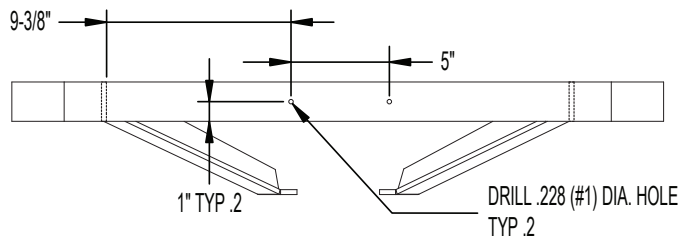
FOR INSTALLING THE DOOR ACTUATOR CABLES, DRILL TWO (2) 3/8" HOLES APPROXIMATELY 1/4" INSIDE THE RADIUS OF THE CATCHER BOX AND 4" FROM THE BACK EDGE, AS SHOWN.

View 6 - Drilling Reference for holes for dump cables

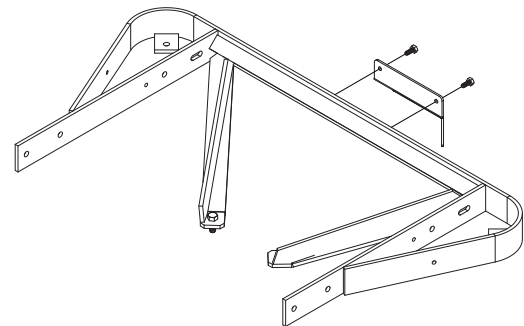


View 7 - Drill holes in sided of catcher box to install cable guides

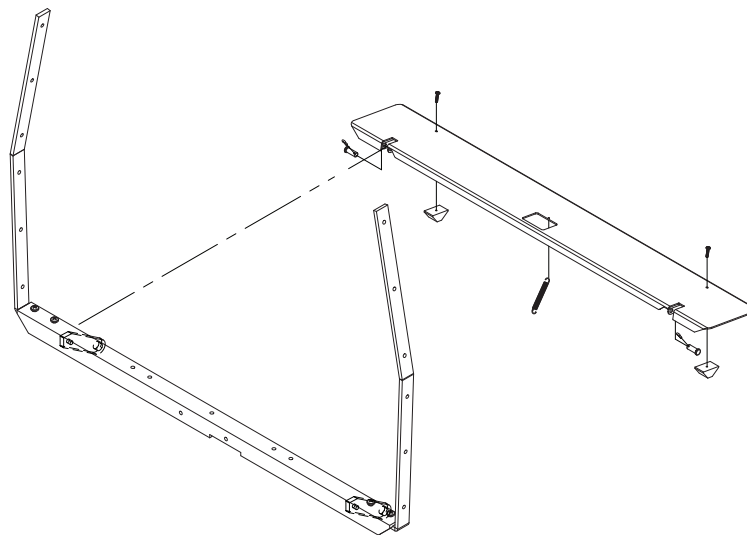
14. Plug the catcher harness into the main harness. With the ignition switch in the run position and the PTO engaged, check the operation of the Powerfil.
15. Drill two (2) holes on the rear bumper (View 8A) using a #1 drill bit (.228) and mount motor guard (View 8B).
16. Attach catcher dump plate to catcher pivot mount arms using clevis pin (View 9). Attach dump plate slides to dump plate assembly (View 9). Attach spring to dump plate assembly, as shown.



View 8A - Drilling Holes to Mount Motor Guard



View 8B - Mounting Motor Guard



View 9 - Catcher Dump Plate

ITEM NO.	PART NO.	DESCRIPTION	QTY REQ'D	
1	8607-10	Lower Arm/Power Dump	2	
2	7620-3	Pivot Bushing (1/2 x 9/16)	4	
3	7523-2	Clevis Pin W/Hole (1/4 x 5/8)	4	
4	8623-6	Inner Power Dump Arm, RH	1	
5	8623-3	Extension Spring Cable	2	
6	5221-2	Ext Spring (3/4 x 3-1/2")	2	
7	8623-5	Torsion Spring Hook	2	
8	8623-7	Inner Power Dump Arm, LH	1	
9	7620-6	Cable Guide	2	
10	7620-16	Roller Bushing	2	
11	7628-1	Channel Angle/RH	1	
12	7629	Channel Angle/LH	1	
13	7622-4	Wire Harness/Power Dump	1	F
14	8623-2	Power Dump Cable/10.0	2	
15	5552	Ball Joint (1/4-28)	2	
16	7630-4	Ram Pivot & Spacer	1	
17	7721-1	Linear Actuator (13.898)	1	C
18	6623	Toggle Switch	1	
19	7624	Sealed Needle Bearing	1	
20	6623-1	Switch Boot	1	
21	7610-5	Extension Spring (1/4 x 2-7/8)	1	
22	7625-3	Fork	1	
23	7627	Front Actuator Mount	1	
24	7636-1	Actuator Mount	1	
25	5830	Grease Fitting	1	
26	7624-1	Roller Bearing Bolt	1	
27	7633	Decal, Power Dump	1	
28	8620-5	Guard, Power Dump Motor	1	
29	5975-7	Cable Tie (50# x 11")	1	
30	5975-3	Cable Tie (50# x 7")	5	
31	5975-1	Cable Tie (18# x 3-3/4")	1	
32	5842-1	Washer (1.0 ID x 1.350 OD)	1*	
33	7620-15	Roller Wheel	2	
F002	F002	10-24 Keps Nut	6	
F003	F003	1/4-28 Hex Nut	4	
F004	F004	1/4-20 Keps Nut	4	
F009	F009	5/16-18 Whiz Locknut	4	
F012	F012	3/8-16 Keps Nut	1	D
F028	F028	10-24 x 3/4 PPHMS	4	
F029	F029	1/4-20 x 1/2 Hex Bolt	4	
F049	F049	5/16 SAE Washer	2	
F068	F068	1/8 x 1 Cotter Pin	4	
F069	F069	3/32 x 1/2 Cotter Pin	4	
F085	F085	3/16 Rivet Backup Washer	4	
F093	F093	5/16-18 x 1 Hex Bolt	2	
F134	F134	AN960816L Washer	2	
F219	F219	7/16-14x1-1/4 Hex Bolt	3	
F226	F226	5/16-18 x 7/8 Hex Bolt	2	
F266	F266	1/2x2-3/4 Shoulder Bolt	1	
F287	F287	1/4-28 Keps Nut	2	
F337	F337	1/4-20 x 5/8 Self-Tap Bolt	2	
F562	F562	5/16-18x1 Set Screw	1	
F591	F591	7/16-14 Flange Top Lock Nut	2	

\* Used only on Model MD

