

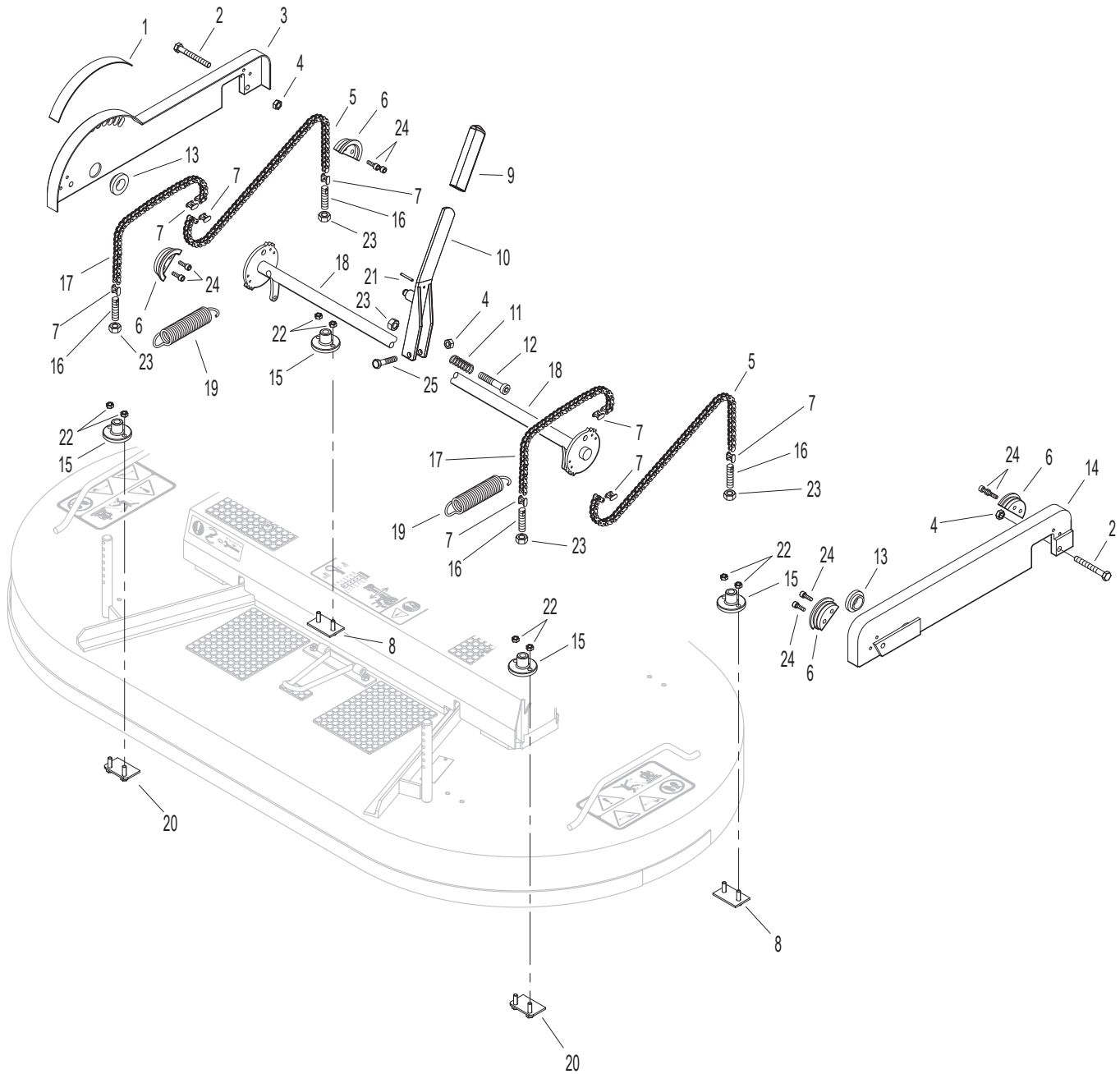


## A25 48"/52" Deck Height Adjuster

DESCRIPTION: Installs a Stevens Deck Height Adjuster on a 48"/52" deck.

Compatible Decks: DC52RV prior to S/N 221042 and all remaining DC48R, DC52R, DM52 prior to S/N 220949

B

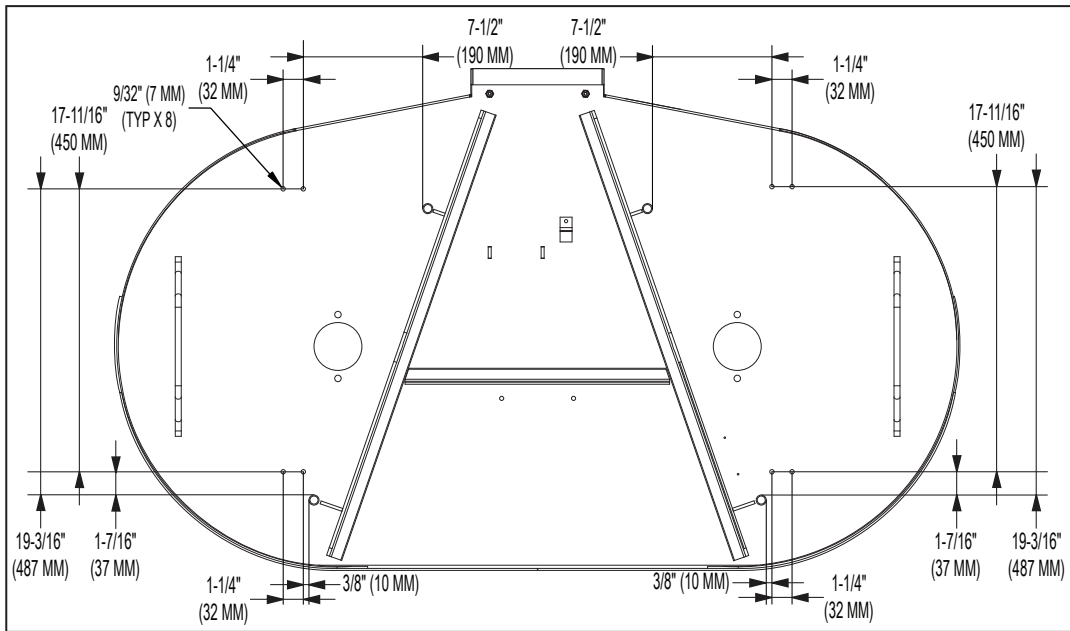


ITEM NO.	STEVENS PART NO.	WALKER PART NO.	DESCRIPTION	QTY REQ'D
1	959	8640-21	Decal, Deck Height Adjustment (Metric)	1
	959	8640-24	Decal, Deck Height Adjustment (Inches)	1
2	SF081		M8 x 45 Bolt	4
3	1016P-1		Mounting Plate, RH (Includes Items #6 & 24)	1
4	SF004	8640-34	M8 Nylock Nut	5
5	1018P	8640-41	Rear Chain (49 Links)	2
6	956	8640-2	Chain Guide	4
7	957	8640-4	Joining Link	8
8	1013P	8640-48	Mounting Plate Doubler - Rear	2
9	14076-00	8640-29	Handle Grip	1
10	960-1	8640-27	Handle	1
11	970-1	8640-30	Compression Spring	1
12	SF097	8640-31	M10 x 50 Low Head Cap Screw	1
13	951	8640-3	Bushing (1-3/8 x 3/4)	2
14	1017P-1		Mounting Plate, LH (Includes Items #6 & 24)	1
15	965-2	8640-6	Mount Block	4
16	953	8640-5	Chain Anchor	4
17	955	8640-13	Front Chain (19 Links)	2
18	1014P-1		Deck Height Adjuster Shaft	1
19	1028P	8640-46	Extension Spring	2
20	1012P	8640-45	Mounting Plate Doubler - Front	2
21	SF018	F293	1/8 x 1 Roll Pin	1
22	SF015		M6 Nut	8
23	SF047	F248	M10 x 1.5 Hex Nut	5
24	SF014	F468	Cap Screw M6 x 16	8
25	SF016	8640-35	M8 x 40 Bolt	1

#### INSTRUCTIONS:

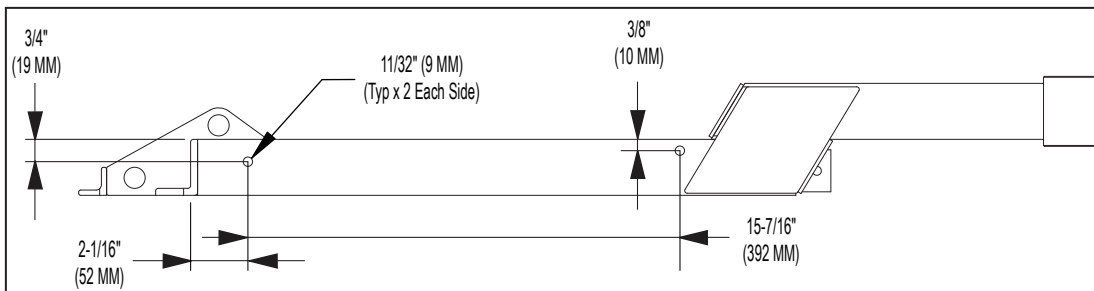
1. Remove the deck from the tractor. Remove the hitch pins, shim washers, and rubber washers from the deck pins and remove the carrier frame from the deck housing.
2. In the deck housing, there are eight (8) pilot holes for mounting the deck height adjuster. These holes will need to be drilled out to 3/16" (5 mm). Using a drill set at a low speed and a metric M6 x 1 tap, apply a light film of oil and thread the holes. Thoroughly clean the holes removing any oil residue to prepare the surface for threadlocker later in the installation.

**NOTE:** If the deck housing doesn't have the pilot holes, use the measurements provided in **Illustration A**.



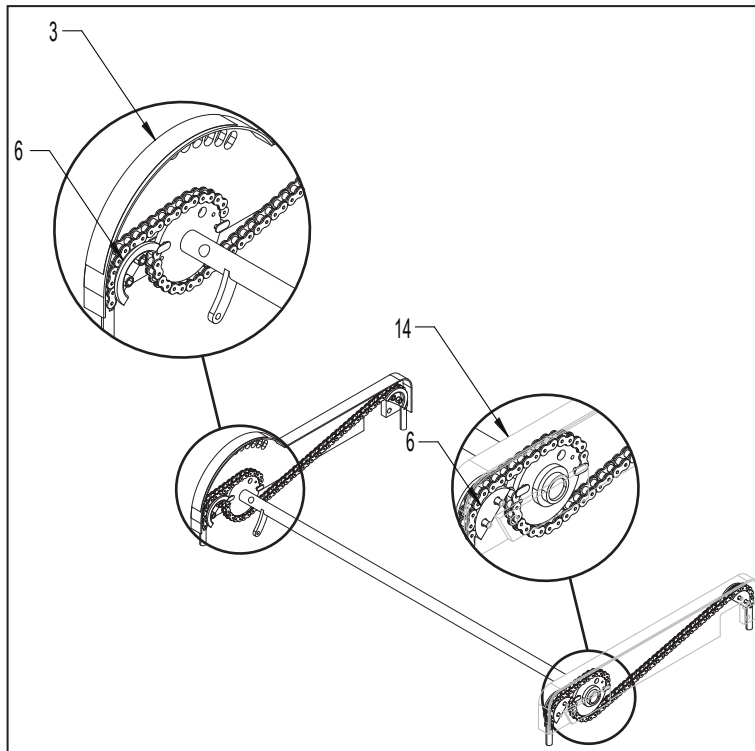
**Illustration A - Deck Housing Pilot Hole Measurements**

- Stand the carrier frame on its side by placing a block of wood under it. Use the measurements provided in **Illustration B** to locate the carrier frame holes. Pilot drill 3/16" (5 mm) the two (2) mounting holes making sure to keep the drill as square as possible. Drill out the holes to 11/32" (9 mm). Use a burring bit to remove any sharp edges from the drilled holes and clean off the surface of the carrier frame. Repeat the process on the other side of the carrier frame.



**Illustration B - Carrier Frame Pilot Hole Measurements**

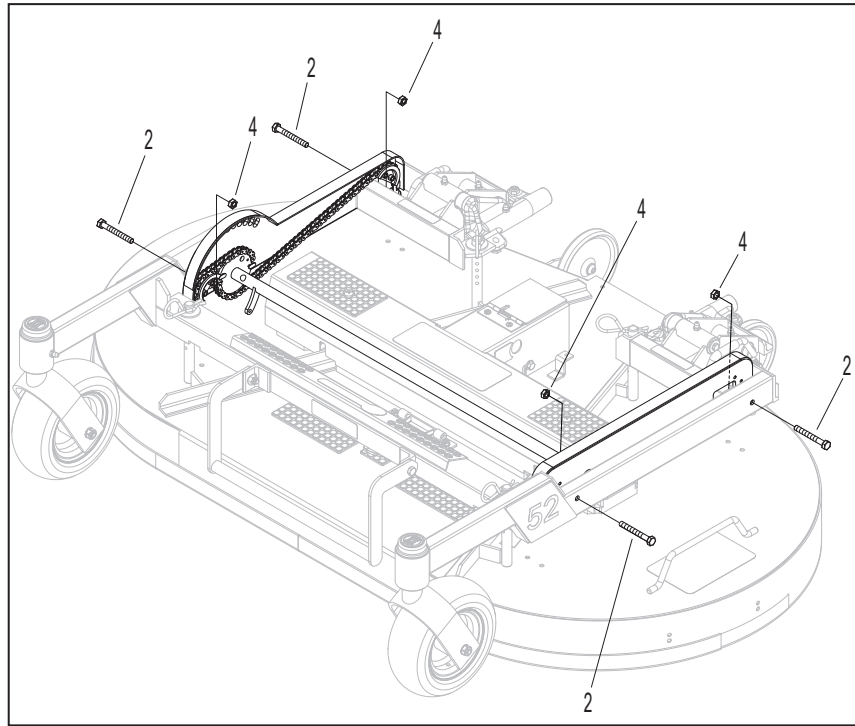
- Install the plastic bushings (#13) to the mounting plates (#3, #14) checking that they are seated firmly. Take the RH mounting plate (#3) and route the chain through the chain guide. Fit the side plate on the shaft and fit the rear chain through the plastic guides as shown in **Illustration C**. Follow the same process with the LH mounting plate (#14).



**Illustration C - Route Chain Through Chain Guide**

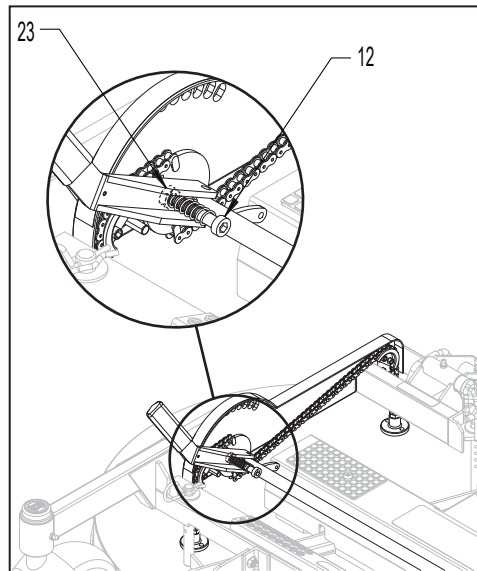
5. Install the M10 nuts (#23) followed by the mounting blocks (#15) on the chain anchors as far as they will go.
6. Place the carrier frame on the deck housing. Position the deck housing in the lowest possible position and secure it using the previously removed hitch pins and shim washers. Check that the deck is not resting on the ground and is completely hanging by the pins. If it is touching the ground at all, place blocks under the caster wheels to provide additional clearance. This step is very important to ensure proper installation of the Deck Height Adjuster.
7. Place the height adjuster assembly between the carrier frame arms as shown in **Illustration D**. Use four (4) metric M8 x 45 (#2) bolts and M8 Nylock nuts (#4) to secure the mounting plates. Insert the bolts from the outside through to the inside. Tighten the bolts. Slide the shaft from side to side and rotate it to verify it can freely move. There should be 1/32" (1 mm) of side play in the shaft.

**NOTE:** For the rear bolt, it is easiest to hold the nut in place and thread the bolt into the nut until the nylock engages.



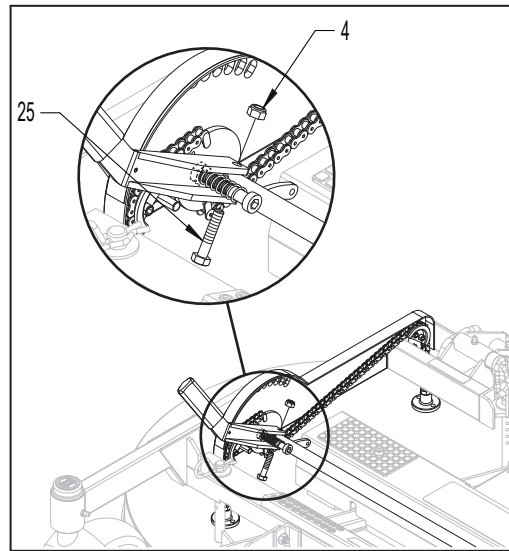
**Illustration D - Install Height Adjuster Assembly**

8. Fit the deck height adjuster handle assembly over the shaft so that the hole drilled through the shaft lines up with the handle pivot holes. Do not put a bolt through this hole until later.
9. On the handle assembly, thread the M10 x 50 low head cap screw (#12) into the chain sprocket until it contacts the side plate and then back off ½ turn. Tighten the M10 jam nut (#23) behind the handle to lock the M10 bolt.



**Illustration E - Deck Height Adjuster Handle**

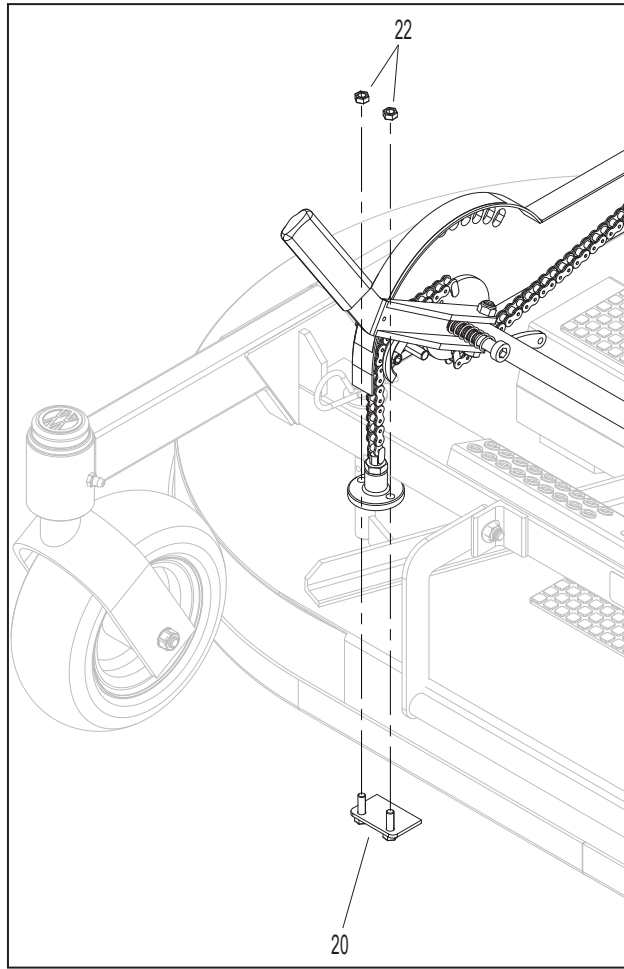
10. Insert the metric M8 x 40 HT ZP (#25) through the shaft from the underside of the handle with the M8 Nylock nut (#4) in place, tighten firmly. Do not overtighten or the handle will not move.



**Illustration F - Attach Handle**

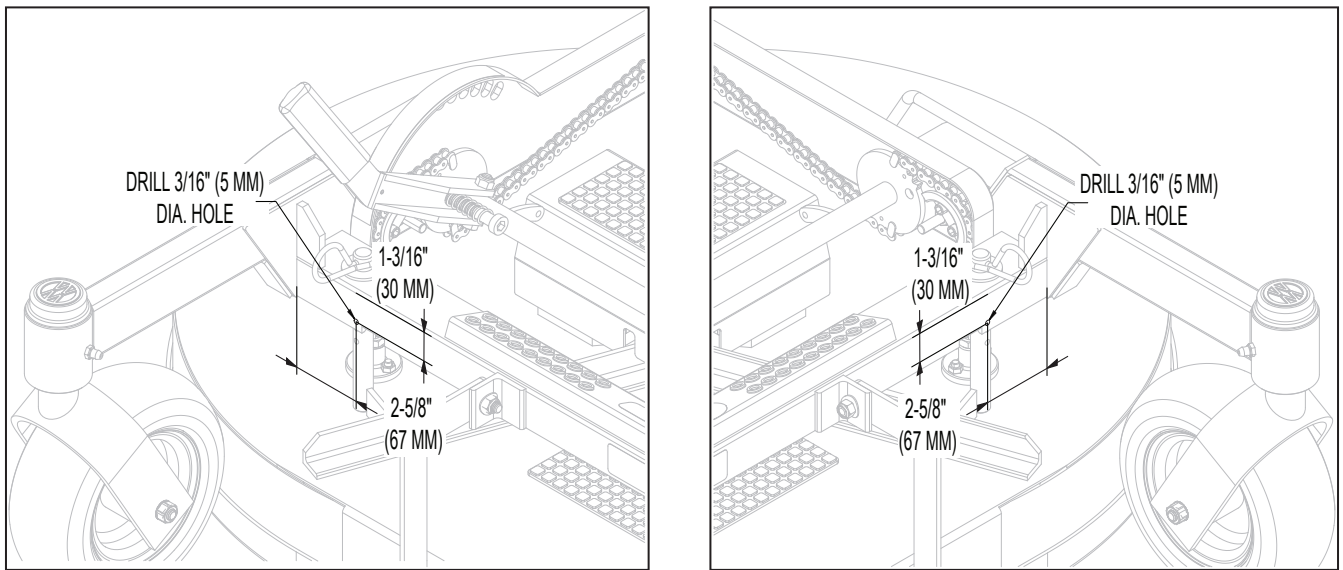
11. Rotate the handle making sure it is free and can spring back into the holes. Check the chain routing as shown and make sure the chain is located correctly in the chain guides and on the teeth of the sprockets.
12. With the handle located in the **position 1** hole as shown in **Illustration G**, adjust the height of the mounting blocks on each chain anchor. Swing the mounting block using your fingers, and thread it down  $\frac{1}{2}$  turn at a time until it contacts the deck housing firmly with finger pressure. Repeat this process for all four mounting plates. Apply a threadlocker to the mounting plate doublers (#8, #20) and use the M6 nuts (#22) to secure the Mount Blocks. Then tighten the M10 jam nuts.

**NOTE:** It is critical to keep the deck in the **lowest position** during this step to ensure proper placement of the mounting blocks. Failure to do this can cause limited travel and issues with the chain.



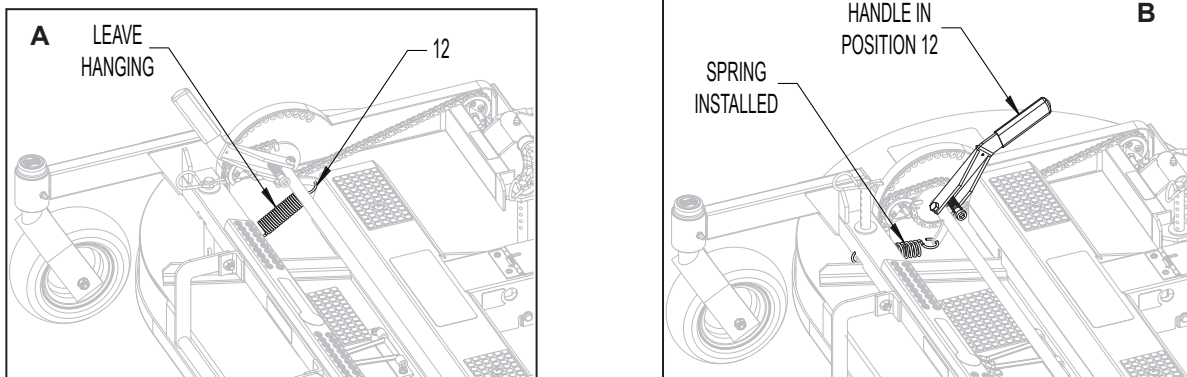
**Illustration G - Attach Mounting Blocks**

13. Mark the spring anchor hole location as shown in **Illustration H**. Drill a 3/16" (5 mm) hole and use a burring bit to remove any sharp edges.



**Illustration H - Spring Anchor Hole Measurements**

14. Attach the spring to the handle as shown, making sure to orient it correctly and leave hanging. Firmly grasp the handle and insert it in position 12. The deck will be heavy as the counterweight spring is not yet installed. While bracing against the deck because the spring is under a lot of tension, attach the spring through the drilled anchor hole. Repeat on left side.



**Illustration I - Attach Spring to Handle**

15. Take the deck height adjuster through its full range of motion, stopping at several points through the range to make sure the handle engages properly. The motion should be light and easy.
16. Remove the hitch pins and shim washers from the deck pins. Retain them in case they are needed in the future.

#### USAGE AND MAINTENANCE RECOMMENDATIONS:

- When tilting up the deck, it is recommended to position the Deck Height Adjuster in the highest possible position to ensure that the chains are under tension and do not derail.
- Periodically lubricate the chain guides with waterproof grease.