

THE PROFESSIONAL LANDSCAPE CONTRACTORS PARTS CATALOG 2025

ProShip GOLD
Shipping Membership
Order Over \$300
& Qualify for
Free ProShip Gold
For 1 Year

ProParts Direct[®].net

Llámanos hablamos español en español!

Your One-Stop-Shop for All Commercial Landscape Parts & Accessories!

@southwestlawn

(800) 305 9255 | WWW.PROPARTSDIRECT.NET

TRIMMER LINE

VORTEX TRIMMER LINE

All that Matters is those Crispy Edges!

.080 to .155 Spools
In-stock



BUY 2 OR MORE SAVE!

Z-SPRAY PARTS IN-STOCK



Front Caster
Wheel fits
Z-Spray
Models
Replaces 135-5974



Order Number: 142-5509
Price: \$126.99

THE BEST BLADE DEALS

MOWER BLADES



**AS LOW
AS
\$9.99
ea.**

Commercial Blades for Exmark,
Toro, Scag, Wright, Snapper Pro,
Ferris, Walker and more....



Briggs Oil Filter

Briggs Oil Filters for
Vanguard & Intek Motors
Order Number:
492932S / 842921

Price \$8.39 ea.
12 or More . \$6.89 ea.

Kawasaki Oil Filter

Both Tall & Short Oil Filters
for Kawasaki Engines.
Order Number:
49065 0724 / 49065 0721

Price \$9.49 ea.
12 or More . \$6.89 ea.



Kohler Oil Filter

Tall & Short Oil
Kohler Filters
Order Number:
52 050 02S / 12 050 01-S

Price \$8.49 ea.
12 or More . \$6.89 ea.



**Donaldson
Canister
Air Filter Special**
841497 & 821136
For
\$45.89

Fits models
540000 & 610000
Engine series

| Order Number | Each |
|----------------|---------|
| 841497 | \$24.89 |
| 821136 (Inner) | \$23.49 |



Fits Kawasaki FH601D-
FH721V, FH770D, FD750D,
FD791D

| Order Number | Each |
|--------------|---------|
| 11013-7020 | \$24.98 |
| 11013-7019 | \$27.70 |



Fits CH18-CH26, CH620-
CH1000, CV17-CV26,
CV620, CV1000, ECH749,
ECV630

| Order Number | Each |
|--------------|---------|
| 25 083 01-S | \$23.90 |
| 25 083 04-S | \$20.95 |

**2
Or More
\$19.00**

THE RIGHT PART, THE RIGHT PRICE..... EVERY TIME.

Kineticix

HIGH PERFORMANCE OILS

Zn

Our Zn™ additive activates as engine temperatures rise creating a chemical barrier that guards critical metal engine components from the wear caused by high pressure, heat, and friction.



| SAE 30 Oil | Single Price | Case of 12 |
|-----------------------|--------------|-----------------------------|
| 80003 - Quart | \$6.95 | (\$5.89 ea.) \$70.68 |
| 80022 - 5 Gallon Pail | \$109.95 | |
| 5W-30 Oil | | |
| 80014 - Quart | \$6.95 | (\$5.89 ea.) \$70.68 |
| 80020 - 5 Gallon Pail | \$99.95 | |
| 80025 - 55 Gal Drum | \$1399.95 | |
| 10W-30 Oil | | |
| 80001 - Quart | \$6.95 | (\$5.29 ea.) \$63.48 |
| 80021 - 5 Gallon Pail | \$99.95 | |
| 10W-40 Oil | | |
| 80017 - Quart | \$6.95 | (\$5.29 ea.) \$63.48 |
| 80033 - 55 Gal Drum | \$1399.95 | |
| 15W-40 Oil | | |
| 80005 - Quart | \$6.95 | (\$5.89 ea.) \$70.68 |
| 80028 - 5 Gallon | \$99.95 | |
| 20W-50 Oil | | |
| 80007 - Quart | \$6.95 | (\$6.49 ea.) \$70.68 |
| 80032 - 55 Gal Drum | \$1499.95 | |



Bar Oil

Order Number: 80009
 TAKFLO Additive for supreme tack
 Red Colored Oil
 1 qt. Bottle
Sale Price:
12 or more:

\$4.89 ea.
\$4.59 ea.



Bar Oil

Order Number: 80010
 TAKFLO Additive for supreme tack
 Red Colored Oil
 1 Gallon bottle
Sale Price:
12 or more:

\$15.89 ea.
\$14.89 ea.



Kawasaki K-Tech Oil

Semi-synthetic, 50: 1 oil. Premium 2 Cycle Oil exceeds the rigorous requirements of API TC, JASO FD and ISO EGD classifications for 2-cycle air-cooled small engine applications. Reduced lacquer and varnish build up. Rust and corrosion inhibitors, Low Smoke Formula

| Order Number | Description | Price Each | Quantity Discount |
|--------------|----------------------------|------------|----------------------|
| 99969 6082C | 48 Bottles, 1 Gallon Mix | \$2.39 | 48 or more \$1.98 ea |
| 99969 6084C | 48 Bottles, 2.5 Gallon Mix | \$3.29 | 48 or more \$2.49 ea |
| 99969 6085C | 24 Bottles, 5 Gallon Mix | \$5.09 | 24 or more \$4.69 ea |
| 99969 6086D | 1 Gallon Jug - 3 Per Case | \$49.95 | 3 or more \$45.95 ea |
| 99969 6157C | 5 Gallon Pail | \$179.95 | |



ECHO® Power Blend Gold Oil

50: 1 oil. Premium 2 Cycle Oil. Meets or exceeds ISO-L-EGD- and JASO M345/FC standards. The oil includes a fuel stabilizer to maintain fuel's quality. Use to minimize exhaust-port blockage, protect engine components and keep fuel burning clean

| Order Number | Description | Price Each | Price Per Case |
|--------------|----------------------------|------------|----------------------|
| 6450001 | 48 Bottles, 1 Gallon Mix | \$2.20 | (\$1.89 ea) \$90.72 |
| 6450025 | 48 Bottles, 2.5 Gallon Mix | \$2.59 | (\$2.54 ea) \$121.92 |
| 6450005 | 12 Bottles, 5 Gallon Mix | \$5.89 | (\$5.10 ea) \$61.20 |
| 6450050 | 1 Gallon / 4 Per Case | \$49.95 | |
| 6450250 | 5 Gallon Pail | \$219.95 | |



Kinetix Zinc Oil

Synthetic 2-Cycle Oil

Fully Synthetic with Fuel Stabilizer. Meets/Exceeds JASO FD, ISO-L-EGD & API-TC Classifications

| Order Number | Description | Price Each | Price Per Case |
|--------------|----------------------------|------------|----------------------|
| 80012 | 48 Bottles, 1 Gallon Mix | \$2.39 | (\$1.98 ea) \$95.04 |
| 80013 | 24 Bottles, 2.5 Gallon Mix | \$3.49 | (\$2.99 ea) \$71.96 |
| 80011 | 24 Bottles, 5 Gallon Mix | \$5.95 | (\$4.59 ea) \$110.16 |



Redmax MaxLife 2 Cycle Oil

RedMax Synthetic Blend 2 Stroke Engine Oil was engineered to actively combat the negative aspects of ethanol blended fuel. Its fuel stabilizer additives offer protection against fuel oxidation (gum formation, sour gas) and system corrosion.

| Order Number | Description | Price Each | Price Per Case |
|--------------|----------------------------|------------|----------------------|
| 598817701 | 48 Bottles, 1 Gallon Mix | \$2.39 | (\$2.09 ea) \$100.32 |
| 598817703 | 48 Bottles, 2.5 Gallon Mix | \$3.39 | (\$3.09 ea) \$148.32 |
| 598817704 | 12 Bottles, 5 Gallon Mix | \$6.59 | (\$6.19 ea) \$74.28 |
| 598817705 | 1 Gallon Jug | \$49.95 | |



OIL MEASURING CUP



4 Fl. oz Capacity
Order Number:
6450009
Price: \$1.69

OIL PAIL DISPENSING PUMP

Free
With a
5 Gallon
Pail



For 5 gal. pail
Order Number:
99909-0010
Price: \$34.89

For Use with Echo Oil Only

Call 800 305 9255 | Original & Aftermarket Parts

Jrco
Heavy-duty Attachments
for Commercial Mowers



Tine Rake Dethatcher

Universal Tine rake will fit all most all commercial mowers. The rake quickly attaches to the machines using a universal mount bar. The dethatcher can be used all year long! Includes mount bar.

| Deck Size | Size | Shipping Weight | # Of Tines | Price |
|------------------------|------|-----------------|------------|----------|
| Compact | 36" | 75 lbs | 27 | \$899.00 |
| 40, 46, 48, 50, 52, 54 | 46" | 83 lbs | 35 | \$899.00 |
| 60, 66, 72 | 60" | 93 lbs | 47 | \$955.00 |

When ordering rake dethatcher, you will need to supply the following information: * Manufacturer of Mower * mower # serial number * Deck Size * Type of deck * bagging system or not



Tune-Up Kits

| Order Number | Description | Price |
|--------------|---|----------|
| 1148 | Leaf Plow Tune Up Kit - Includes Left & right Tine Set, 2 skid wheels, 4 oil-lite flange bushings, 2 clevis pins & circle cotters | \$142.80 |
| 1136 | Tine Rake Tune Up Kit - 36" Includes 27 Double Loop Tines, 4 oil-lite flange bushings, 6 Clevis Pins and circle cotters | \$92.40 |
| 1146 | Tine Rake Tune Up Kit - 46" Includes 35 Double Loop Tines, 4 oil-lite flange bushings, 6 Clevis Pins and circle cotters | \$117.60 |
| 1160 | Tine Rake Tune Up Kit - 60" Includes 47 Double Loop Tines, 4 oil-lite flange bushings, 6 Clevis Pins and circle cotters | \$152.25 |



| Order Number | Description | Price Each | 24 or More |
|--------------|-------------------------------|------------|------------|
| 4624DD | Replacement Double Loop Tines | \$2.95 | \$2.49 |

Dual Wheel Velke

Dual Wheel Velke's give more stability than a single wheel and leave a nice track behind any walk behind mower. Operator Capacity = 250 lbs. Only in black

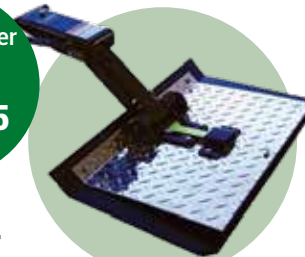
Order Number: VKX2
Price . . \$499.95 ea.



Steel Grass Catchers Heavy-Duty Metal Great Handle Design

| Order Number | Description | Price |
|-----------------------------|--|----------|
| Exmark (Bracket Included) | | |
| UNI4300 | 4.3 cu ft, Fits Exmark, Early Bobcat, Kees Encore | \$359.99 |
| UNI5800 | 5.8 cu ft, Fits Exmark, Early Bobcat, Kees Encore | \$459.99 |
| Gravelly | | |
| GRA4300 | 4.3 cu, ft | \$359.99 |
| GRA5800 | 5.8 cu ft, | \$459.99 |
| GRA5800-15 | 5.8 cu ft, Pro-Turn, Pro-Stance Mower | \$459.99 |
| Ferris (Bracket Included) | | |
| SCG4300 | 4.3 cu ft, Fits Ferris Mowers Decks | \$359.99 |
| SCG5800 | 5.8 cu ft, Fits Ferris Mowers Decks | \$459.99 |
| Scag (Bracket Included) | | |
| SCG4300 | 4.3 cu ft, Fits Ferris Mowers & Scag Regular Decks | \$359.99 |
| SCG5800 | 5.8 cu ft, Fits Ferris Mowers & Scag Regular Decks | \$459.99 |
| SCGA4300 | 4.3 cu ft, Fits Scag Advantage Decks | \$359.99 |
| SCGA5800 | 5.8 cu ft, Fits Scag Advantage Decks | \$459.99 |
| SCGV4300 | 4.3 cu ft, Fits Scag Velocity Decks | \$359.99 |
| SCGV5800 | 5.8 cu ft, Fits Scag Velocity Decks | \$459.99 |
| Toro (No Bracket Needed) | | |
| TOR4300 | 4.3 cu ft, Fits Toro Turbo Force Decks | \$359.99 |
| TOR5800 | 5.8 cu ft, Fits Toro Turbo Force Decks | \$459.99 |
| Wright (No Bracket Needed) | | |
| WRI4300 | 4.3 cu ft, Fits Wright, Early Bobcat, Kees, Encore | \$359.99 |
| WRI5800 | 5.8 cu ft, Fits Wright, Early Bobcat, Kees, Encore | \$459.99 |

Order Number 103000
Price \$469.95



ProSlide XT
The ProSlide offers great looking Professional lawn striping with the cost saving benefits of a velke wheel. Gas loaded spring folds slide up nicely.



ProSlide Wear Plate
Replacement Plastic Wear Plate for ProSlide.

Order Number 103038
Price . . . \$99.99

| Order Number | Description | Price |
|--------------|-----------------------|---------|
| 102028 | Gas Spring | \$29.99 |
| 103036 | XT Torsion Spring Kit | \$19.99 |



Leaf Plows

The heavy-duty JRCO Leaf Blade Plow uses the mower's power to quickly move piles of leaves. It virtually eliminates "tarping" and moves windrowed leaves for collection. The one-piece. Does not include Mount bar.

Order Number
480
Price
\$649.95

Jrco
Heavy-duty Attachments
for Commercial Mowers



55 inch wide galvanized steel blade has supports at the top, center and bottom for durability

Stainless steel spring tines allow the plow to push leaves on even surfaces.



Mount Bar Package

Required for all Front mount attachments
One mount bar need per mower model
Includes all hardware and brackets

Price \$227.00 Call or go online for proper mount bar for your machine.

Blower Buggy Carrier

Designed to hold walk-behind blowers on the front of zero-turn and riding mowers.
Moves yard debris with speed and ease.
Buggy adjusts to fit most blowers.
One person can quickly unload and load
Quickly attaches to Jrco mount bar with 2 pins
Jrco mount package sold separately.

BLOW DEBRIS WITH SPEED & EASE

Order Number
601
Price
\$849.95



Order Number
751
Price
\$2899.95

Hooker Aerator

38" Wide Aerator, six tine rotors, front-mount
Aerate 66,000 sq ft per hour at 5 mph.
Punctures up to six holes per sq ft.
Holes approximately 1/2" wide x 1-1/4" long and up to 3" deep.
Casters swivel allowing turning while aerating
Six floating rotor heads independently to life over tree roots and rocks while the other heads continue to aerate.
Electric actuator lifts the heads for transport.
Jrco mount bar sold separately.

| Order Number | Description | Price |
|--------------|---|----------|
| 15W | Deckless Aerator Mount for Walker Mower | \$479.95 |



Hooker Tow-Behind Aerator

38" Wide Aerator, six tine rotors, front-mount
Aerate 66,000 sq ft per hour at 5 mph.
60" Wide aerates 105,000/hr at 5 mph.
Punctures up to six holes per sq ft.
Holes approximately 1/2" wide x 1-1/4" long and up to 3" deep.
Six floating rotor heads independently to life over tree roots and rocks while the other heads continue to aerate.
Electric actuator lifts the heads for transport.
Jrco mount bar sold separately.

| Order Number | Description | Price |
|--------------|--|-----------|
| 753 | 38" Tow-Behind Aerator, Includes Hitch | \$3200.00 |
| 755 | 60" Tow-Behind Aerator, Includes Hitch | \$4910.00 |

NO-SPILL® gas can. The only spill-proof, DOT approved gas can!

1.25 Gallon No-Spill Can

1.25 Gal. Fuel Can

Order Number :
1415

Price . . \$20.95



5 Gallon No-Spill Diesel Can

5 Gal. Fuel Can
Handle on Rear

Order Number :
1467S

Price . . \$39.95



5 Gallon No-Spill Kerosene Can

5 Gal. Fuel Can
Handle on Rear

Order Number :
1466S

Price . . \$39.95



2.5 Gallon No-Spill Can

2.5 Gal. Fuel Can

Order Number :
1405

Price . . \$22.95



5 Gallon No-Spill Can

5 Gal. Fuel Can
Handle on Rear

Order Number :
1460S

Price . . \$39.95



Replacement Gas Cap

Order Number:
6132

Price . . \$11.95



6" Flexible Spout

Order Number:
0206

Price . . \$4.59



Mechanics-Grade NITRILE GLOVES

Duraskin Nitrile gloves are designed for performance with better grip and stronger material. Keep hands clean and protected from dirt, oil, cleaners and chemicals in the shop or on the job.



Touch-Sensitive



4MM MECHANIC DUTY

| Order Number | Description | Price ea. |
|--------------|---|-----------|
| 13040 | Medium - Box of 100 Gloves Color: Black, Powder Free | \$44.95 |

4MM MECHANIC DUTY

| Order Number | Description | Price ea. |
|--------------|--|-----------|
| 13060 | Large - Box of 100 Gloves Color: Black, Powder Free | \$44.95 |



4MM MECHANIC DUTY

| Order Number | Description | Price ea. |
|--------------|--|-----------|
| 13061 | X-Large - Box of 100 Gloves Color: Black, Powder Free | \$44.95 |

SHOP TOOLS

Hand-E Quick Funnel

Molded for holding bottles
Fits multiple openings
Holds 1 qt.



Order Number
750-724
Price
\$7.56



Oil Drain

Easy Pouring Design
Made of Plastic
Holds 15 qts.

Order Number:
750-732
Price \$34.39



Oil Extractor

For use on Lawnmowers, tillers, snow blowers,
ATV's & transmissions.
3 Qt Capacity
No Electricity needed.

Order Number:
051-680
Price \$98.89

Used In
Our Own
Shops!

9" X 5" Magnetic Tool Tray



Magnetic Tool Tray 9" X 5" heavy duty, stainless steel, powerful magnets with scratch resistant rubber coating. Ideal for holding small parts and tools

Order Number: 16402
Price: \$20.85



PL1800H-V

| Order Number | Description | Price Each |
|--------------|----------------------|------------|
| G382244-S | TINE (Uses 4) 5/8 | \$32.97 |



PL2500H/SPH

| Order Number | Description | Price Each |
|--------------|----------------------|------------|
| G382244-S | TINE (Uses 8) 5/8 | \$32.97 |



AE1300H/AE401-V

| Order Number | Description | Price Each |
|--------------|------------------|------------|
| G360100 | TINE (Uses 8) | \$12.50 |



CR POWER RAKES

| Order Number | Description | Price Each |
|--------------|--------------------------------|------------|
| G350251-S | Flail Blade Kit Set of 30 | \$112.60 |
| G350187 | Slicing Blade Kit Set of 20 | \$177.10 |



PR POWER RAKES

| Order Number | Description | Price Each |
|--------------|--------------------------------|------------|
| G350356-S | Spring Tine Kit | \$199.90 |
| G350187 | Slicing Blade Kit Set of 20 | \$177.10 |
| G350186 | Flail Blade Kit Set of 30 | \$149.95 |



18" Walk-behind Aerator

| Order Number | Description | Price Each |
|--------------|------------------------|------------|
| 126-2143 | TINE Uses 24 | \$9.99 |
| 121-1869 | Flail Blade Uses 32 | \$4.97 |



Hooker Aerator

| Order Number | Description | Price Each |
|--------------|-----------------------|------------|
| 7860-1 | TINE Gen2 (Uses 6) | \$43.58 |
| 7860-2 | Tine Gen 3 | \$44.47 |
| 7860 | Tine Gen 4 | \$38.85 |



Fits All Walk Bluebird Aerators.
 SP-424 Required 24
 B-530 Required 30
 H-530 Required 30
 B-742 Required 42
 H-742 Required 42



Blue Bird Aerator Tines

| Order Number | Description | Price Each |
|--------------|----------------|------------|
| BB539007572 | Single Tine | \$13.52 |
| BB539007112 | Tine Kit of 6 | \$88.76 |
| BB539007211 | Tine Kit of 24 | \$278.34 |



30" Stand-On Aerator

| Order Number | Description | Price Each |
|--------------|-------------------|------------|
| 126-2143 | TINE (Uses 24) | \$9.99 |

PARTS FOR BILLY GOAT, SCAG, GIANT-VAC, LITTLE WONDER TRUCKLOADERS



Fan fits 12HP & 13 HP Billy Goat Truck loaders. Models TR1204L and TR1304H.

Order Number G810974
PRICE \$395.85



| Order Number | Impellar Fans - Model Fitment | Price |
|--------------|-------------------------------|----------|
| G810629 | TR1104 | \$280.35 |
| G810974 | TR1204L / TR1304H | \$395.85 |
| G810930 | HTR1803V / 1803VEU | \$426.32 |
| G812257-S | DL1201 / DL1301H | \$371.19 |
| G810930 | DL1401SE/ DL1801VE | \$426.32 |
| G791120-S | DL1800V / DL2500S | \$741.25 |
| G792601 | DL3500V | \$806.93 |



SCAG
GIANT-VAC

Fan fits Skid Mount and Tow Behind TLS20W models. Requires hub.

Order Number 452454
PRICE \$549.95

Hub - Order Number 484820



| Order Number | Impellar Fans - Model Fitment | Price |
|----------------------------|---|----------|
| 452454 | TLS20-18BV, TLH20-18BV | \$536.41 |
| 452455 | TLS20-29BV, TL20W-26EFI | \$497.24 |
| 452445 | TLB25-35BV, TLB25-37CH, TLB25-48KBD | \$850.57 |
| Hub | | |
| 484819 | TLS20-18BV, TLH20-18BV | \$106.82 |
| 484820 | TL20W-29BV, TL20W-26EFI | \$175.67 |
| Impellar Bolt & Keyway Kit | | |
| 462592 | TLS20-18BV, TLH20-18BV, TL20W-29BV, TL20W-26EFI | \$49.87 |
| Impellar Carriage Screw | | |
| 04015-22 | TLS20-18BV, TLH20-18BV, TL20W-29BV, TL20W-26EFI | \$3.40 |



monster
POWER EQUIPMENT

LITTLE WONDER

Fan fits Little Wonder / Monster 29HP Truck Loaders.

Order Number MP020025
PRICE \$1,188.00



| Order Number | Impellar Fans - Model Fitment | Price |
|--------------|-------------------------------|-----------|
| MP020028 | 8183-04-01, 8185-04-01 | \$939.39 |
| MP020025 | 8293-04-01, 8295-04-01 | \$1188.68 |
| LW4168402 | 8160-00-01, 8180-00-01 | \$779.18 |
| LW4167583 | 8161-00-01, 8181-00-01 | \$769.41 |
| LW4168330 | 8272-00-01 (Includes Talon) | \$961.17 |

REPLACEMENT PARTS

| Order Number | Description | Price |
|--------------|-----------------------------------|----------|
| G790167 | DL1201/DL1301H Impeller screw | \$3.26 |
| G8177012 | DL1201/DL1301H Washer | \$0.63 |
| G9201125 | DL1201/DL1301H KeyWay | \$1.68 |
| G812283 | DL1401SE/ DL1801VE Debris Reducer | \$61.95 |
| G9201125 | DL1401SE/ DL1801VE Keyway | \$1.68 |
| G9201125 | DL1800/ DL2500S Keyway | \$1.68 |
| G812221 | DL1201L / DL1301 Insert Liner | \$131.04 |
| G812214 | DL1401 Insert Liner | \$131.04 |
| G812391-S | DL1800V / DL2500 Insert Liner | \$188.49 |

REPLACEMENT PARTS

| Order Number | Description | Price |
|---|---------------------------|----------|
| Long Wear Liner | | |
| 426310 | TLS20-18BV, TLH20-18BV | \$68.19 |
| Short Wear Liner | | |
| 426311 | TLS20-18BV, TLH20-18BV | \$94.32 |
| Wear Liner Kit | | |
| 462583 | TLS20W-29BV, TLS20W-26EFI | \$276.15 |
| Hose, Metal Galv. Interlock 8" Dia. x 60" | | |
| 484939-03 | TL20W-29BV, TL20W-26EFI | \$182.84 |

CALL US FOR HELP ON TRUCK LOADER PARTS 800 305 9255



INQUIRE ABOUT PROSHIP

Pro-Ship is the best way to save money on shipping. Do you place orders frequently to replenish stock or need to keep inventory low? Get parts quickly at a low cost to you. ProShip is designed for anybody who needs to cut down costs but order all of the time

PACKAGES START AT \$59.⁹⁹



Order Online www.propartsdirect.net | Original & Aftermarket Parts

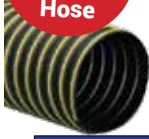


COMMERCIAL GRADE TRUCK LOADER HOSE

OUR HOSE WILL FITS THESE MAJOR BRANDS...AND MORE!



Our Most Common Intake Hose



Flexadux T-7W Truck Hose

Medium weight black thermoplastic rubber hose reinforced with a spring steel wire helix & yellow external polypropylene wearstrip.

| Order Number | Inside Diameter | Length | Price Per |
|--------------|-----------------|-----------|-----------|
| 8901050000 | 5.00" | 5" x 10' | \$79.99 |
| 8901060000 | 6.00" | 6" x 10' | \$89.95 |
| 8901070000 | 7.00" | 7" x 10' | \$99.95 |
| 8901080000 | 8.00" | 8 x 10' | \$119.95 |
| 8901100000 | 10.00" | 10" x 10' | \$169.95 |
| 8901120000 | 12.00" | 12" x 10' | \$189.95 |

affirm
BUY NOW & PAY LATER

PROPARTS DIRECT GIVES YOU THE OPTION TO BUY THE PARTS YOU NEED NOW AND PAY OVER TIME WITH AFFIRM. CHOOSE AFFIRM AT CHECKOUT TO APPLY FOR FIXED MONTHLY PAYMENT OPTIONS THAT FIT ANY BUDGET.
*SUBJECT TO ELIGIBILITY PAYMENT OPTIONS THROUGH AFFIRM ARE PROVIDED BY THESE LENDING PARTNERS: AFFIRM.COM/LENDERS.



Flex-Tube PV

Medium weight clear co-extruded PVC hose with a rigid black external PVC helix.

| Order Number | Inside Diameter | Length | Price Per |
|--------------|-----------------|-----------|-----------|
| 3504040012 | 4.00" | 4" x 12' | \$79.95 |
| 3504060012 | 6.00" | 6" x 12' | \$119.95 |
| 3504060025 | 6.00" | 6" x 25' | \$239.95 |
| 3504070012 | 7.00" | 7" x 12' | \$149.95 |
| 3504070025 | 7.00" | 7" x 25' | \$289.95 |
| 3504080012 | 8.00" | 8" x 12' | \$179.95 |
| 3504080025 | 8.00" | 8" x 25' | \$372.50 |
| 3504100012 | 10.00" | 10" x 12' | \$224.89 |
| 3504100025 | 10.00" | 10" x 25' | \$466.79 |
| 3504120012 | 12.00" | 12" x 12' | \$279.95 |



Bark Mulch Hose - Flex Tube PU

Medium weight clear co-extruded thermoplastic ether based polyurethane hose with a rigid yellow external ABS helix.

| Order Number | Inner Diameter | Length | Price Per |
|--------------|----------------|------------|------------|
| 3493040025 | 4.00" | 4" x 25' | \$309.95 |
| 3493040050 | 4.00" | 4" x 50' | \$539.30 |
| 3493040100 | 4.00" | 4" x 100' | \$1,074.69 |
| 3493060006 | 6.00" | 6" x 6ft | \$95.98 |
| 3493060012 | 6.00" | 6" x 12 ft | \$191.49 |
| 3493080012 | 8.00" | 12 ft | \$289.95 |
| 3493100012 | 10.00" | 12 ft | \$339.00 |
| 3493120012 | 12.00" | 12 ft | \$389.95 |



NEW

Flexadux LCDC



Medium weight high performance black polypropylene blend hose reinforced with a spring steel wire helix & orange external polypropylene wearstrip.

| Order Number | Inner Diameter | Length | Price Per |
|--------------|----------------|--------|-----------|
| 8871060010 | 6.00" | 10 ft | \$74.95 |
| 8871070010 | 7.00" | 10 ft | \$89.95 |
| 8871080010 | 8.00" | 10 ft | \$99.95 |
| 8871100010 | 10.00" | 10 ft | \$159.95 |
| 8871120010 | 12.00" | 10 ft | \$169.95 |



Flex-Thane HD

Heavy weight clear polyurethane hose reinforced with a bronze coated spring steel wire helix, Polyurethane Material.

| Order Number | Inner Diameter | Length | Price Per |
|--------------|----------------|--------|-----------|
| 8391120010 | 12.00" | 10 ft | \$408.95 |
| 8391140010 | 14.00" | 10ft | \$504.78 |
| 8391160010 | 16.00" | 10 ft | \$632.00 |
| 8391180010 | 18.00" | 10 ft | \$730.00 |

| Bridge Clamps for Flex-Tube®, PV, PU | | | Order Number | Description | Price Per |
|--------------------------------------|-------------|-----------|--------------|-------------|-----------|
| Order Number | Description | Price Per | 02200700FT | 7" Clamp | \$16.89 |
| 02200400FT | 4" Clamp | \$14.95 | 02200800FT | 8" Clamp | \$17.75 |
| 02200500FT | 5" Clamp | \$14.95 | 02201000FT | 10" Clamp | \$20.59 |
| 02200600FT | 6" Clamp | \$16.00 | 02201200FT | 12" Clamp | \$22.79 |

T-7W Hose Bridge Clamps



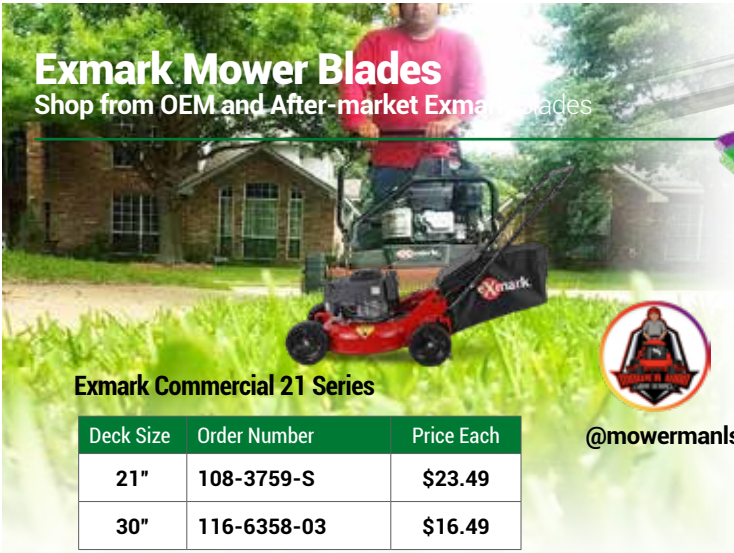
Bridge Clamps are specially designed to fit between the coils on truck loader hose.

| Order Number | Description | Price Per |
|--------------|-------------|-----------|
| 02200400CW | 4" Clamp | \$14.95 |
| 02200500CW | 5" Clamp | \$14.95 |
| 02200600CW | 6" Clamp | \$16.00 |
| 02200700CW | 7" Clamp | \$16.89 |
| 02200800CW | 8" Clamp | \$17.75 |
| 02201000CW | 10" Clamp | \$20.59 |
| 02201200CW | 12" Clamp | \$22.79 |

Call 800 305 9255 | Original & Aftermarket Parts

Exmark Mower Blades

Shop from OEM and After-market Exmark Blades



Exmark Commercial 21 Series

| Deck Size | Order Number | Price Each |
|-----------|--------------|------------|
| 21" | 108-3759-S | \$23.49 |
| 30" | 116-6358-03 | \$16.49 |

@mowerman1s



Exmark Turf Tracer S & X Series

| Deck Size | Order Number | Price Each | 3 or More |
|----------------------|--------------|------------|-----------|
| 36" / 52" | 103-6402-S | \$22.99 | \$20.99 |
| PROPARTS ALTERNATIVE | 11495 | \$14.95 | \$13.00 |
| 48" | 103-6401-S | \$22.99 | \$20.99 |
| PROPARTS ALTERNATIVE | 11231 | \$14.88 | \$13.29 |

Exmark Splined Blade Bushing
Used on Exmark Lazer Z Decks.
For blades with .94 center diameter
Order Number : 103-3037 Price . . \$19.99



Exmark Lazer E, S & X Series

| Deck Size | Order Number | Price | 3 or More |
|----------------------|--------------|---------|-----------|
| 48" | 103-6401-S | \$22.99 | |
| PROPARTS ALTERNATIVE | 11231 | \$14.88 | \$13.29 |
| 52" | 103-6402-S | \$22.99 | \$20.99 |
| PROPARTS ALTERNATIVE | 11495 | \$14.95 | \$13.00 |
| 60" | 103-6403-S | \$22.99 | \$20.99 |
| PROPARTS ALTERNATIVE | 11248 | \$15.95 | \$14.00 |
| 72" | 103-6404-S | \$31.99 | \$28.00 |
| PROPARTS ALTERNATIVE | 792-033 | \$19.95 | \$18.00 |



Exmark Metro ECS & Viking

| Deck Size | Order Number | Price Each | 3 or More |
|----------------------|--------------|------------|-----------|
| 32" / 48" | 103-6583-S | \$22.99 | \$21.89 |
| PROPARTS ALTERNATIVE | 1009 | \$15.89 | \$15.00 |
| 36" / 52" | 103-6584-S | \$26.99 | \$21.89 |
| PROPARTS ALTERNATIVE | 3404 | \$15.89 | \$14.00 |



Exmark Vantage Series

| Deck Size | Order Number | Price Each | 3 or More |
|----------------------|--------------|------------|-----------|
| 36" / 52" | 103-6402-S | \$22.99 | \$20.99 |
| PROPARTS ALTERNATIVE | 11495 | \$14.95 | \$13.00 |
| 48" | 103-6401-S | \$22.99 | \$20.99 |
| PROPARTS ALTERNATIVE | 11231 | \$14.88 | \$13.29 |
| 60" | 103-6403-S | \$22.99 | \$20.99 |
| PROPARTS ALTERNATIVE | 11248 | \$15.95 | \$14.00 |



Exmark Quest E & S Series

| Deck Size | Order Number | Price Each | 3 or More |
|----------------------|--------------|------------|-----------|
| 32" / 50" | 115-5059-03 | \$21.99 | \$18.00 |
| PROPARTS ALTERNATIVE | 12273 | \$15.88 | \$14.00 |
| Hi-Lift | 131-3939-03 | \$22.79 | \$20.99 |
| 60" | 115-9649-03 | \$26.49 | \$24.00 |

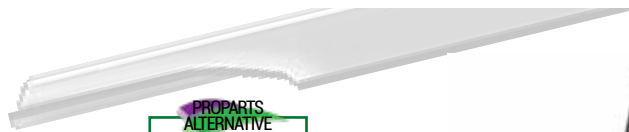
Exmark Mower Blades

Shop from OEM and After-market Exmark Blades



Exmark Navigator

| Deck Size | Order Number | Price | Shear Bolt / Nut | |
|-----------|--------------|---------|----------------------|-----------|
| 42" LH | 130-2860 | \$20.99 | Shear Bolt - 99-0283 | |
| 42" RH | 130-2859 | \$20.99 | \$5.49 ea. | 2 or More |
| 48" LH | 130-2861 | \$22.58 | Nut - 3296-42 | \$20.59 |
| 48" RH | 130-2862 | \$22.58 | \$0.48 ea. | \$20.59 |



PROPARTS
ALTERNATIVE
P. PROPARTS
A. APPROVED
A. ALTERNATIVE
P. PART



Exmark Radius E, S & X Series

| Deck Size | Order Number | Price Each | 2 or More |
|----------------------|--------------|------------|-----------|
| 48" | 103-6401-S | \$22.99 | \$20.99 |
| PROPARTS ALTERNATIVE | 11231 | \$14.88 | \$13.29 |
| 52" | 103-6402-S | \$22.99 | \$20.99 |
| PROPARTS ALTERNATIVE | 11495 | \$14.95 | \$13.00 |
| 60" | 103-6403-S | \$23.99 | \$20.99 |
| PROPARTS ALTERNATIVE | 11248 | \$15.95 | \$14.00 |

Ferris Mower Blades

Shop from OEM and After-market Exmark Blades



Ferris FW25

| Deck Size | Order Number | Price Each | 2 or More |
|----------------------|-----------------|------------|-----------|
| 36" | 5101756X2 (set) | \$44.99 | |
| PROPARTS ALTERNATIVE | 3404 (Single) | \$15.89 | \$14.00 |
| 48" | 5101986S (set) | \$59.99 | |
| PROPARTS ALTERNATIVE | 2172 (Single) | \$15.89 | \$14.00 |
| 52" | 5101756S (set) | \$49.95 | |
| PROPARTS ALTERNATIVE | 3404 (Single) | \$15.89 | \$14.00 |



Ferris FW35

| Deck Size | Order Number | Price Each | 2 Or More |
|----------------------|----------------|------------|-----------|
| 48" | 5101986S (set) | \$59.99 | |
| PROPARTS ALTERNATIVE | 2172 (Single) | \$15.89 | \$14.00 |
| 52" | 5101756S (set) | \$49.95 | |
| PROPARTS ALTERNATIVE | 3404 (Single) | \$15.89 | \$14.00 |
| 61" | 5101755S (set) | \$68.99 | |
| PROPARTS ALTERNATIVE | 14539 | \$18.00 | \$17.00 |



Ferris F320Z

| Deck Size | Order Number | Price Each | 2 Or More |
|----------------------|----------------|------------|-----------|
| 61" | 5101755S (set) | \$68.99 | |
| PROPARTS ALTERNATIVE | 14539 | \$18.95 | \$17.00 |
| 72" | 5102227S (set) | \$96.70 | |
| PROPARTS ALTERNATIVE | 16516 (Single) | \$20.89 | \$18.00 |



Check out
@ronillescott
and his channel
on Instagram!
Tweels on his
Ferris!



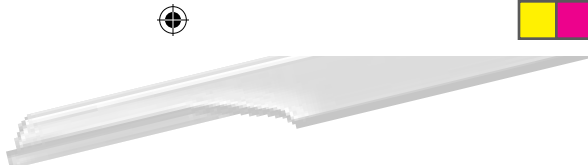
Ferris FX800X

| Deck Size | Order Number | Price Each | 2 or More |
|----------------------|----------------|------------|-----------|
| 61" | 5101755S (set) | \$68.99 | |
| PROPARTS ALTERNATIVE | 14539 | \$15.89 | \$17.00 |
| 72" | 5102227S (set) | \$96.70 | |
| PROPARTS ALTERNATIVE | 16516 | \$20.89 | \$18.00 |

Call 800 305 9255 | Original & Aftermarket Parts

Ferris Mower Blades

Shop from OEM and After-market Ferris Blades



PROPARTS
ALTERNATIVE

P. PROPARTS
A. APPROVED
A. ALTERNATIVE
P. PART



Ferris SRSZ1

| Deck Size | Order Number | Price Each | 2 or More |
|----------------------|-----------------|------------|-----------|
| 36" | 5101756X2 (set) | \$44.99 | |
| PROPARTS ALTERNATIVE | 3404 (Single) | \$15.89 | \$14.00 |
| 48" | 5101986S (set) | \$59.99 | |
| PROPARTS ALTERNATIVE | 2172 (Single) | \$15.89 | \$14.00 |

Ferris SRSZ2

| Deck Size | Order Number | Price Each | 3 Or More |
|----------------------|----------------|------------|-----------|
| 52" | 5101756S (set) | \$49.95 | |
| PROPARTS ALTERNATIVE | 3404 | \$15.89 | \$14.00 |
| 61" | 5101755S (set) | \$68.99 | |
| PROPARTS ALTERNATIVE | 14539 | \$18.00 | \$17.00 |



Ferris SRSZ3X

| Deck Size | Order Number | Price Each | 3 or More |
|----------------------|----------------|------------|-----------|
| 61" | 5101755S (set) | \$68.99 | |
| PROPARTS ALTERNATIVE | 14539 | \$18.00 | \$17.00 |
| 72" | 5102227S (set) | \$96.70 | |
| PROPARTS ALTERNATIVE | 16516 | \$20.89 | \$18.00 |



Ferris IS600Z

| Deck Size | Order Number | Price | 3 or More |
|----------------------|----------------|---------|-----------|
| 44" | 5061827S (Set) | \$60.99 | |
| 48" | 5101986S (set) | \$59.99 | |
| PROPARTS ALTERNATIVE | 2172 (Single) | \$15.89 | \$14.00 |
| 52" | 5101756S (set) | \$49.95 | |
| PROPARTS ALTERNATIVE | 3404 | \$15.89 | \$14.00 |



Ferris IS700Z

| Deck Size | Order Number | Price Each | 3 or More |
|----------------------|----------------|------------|-----------|
| 52" | 5101756S (set) | \$49.95 | |
| PROPARTS ALTERNATIVE | 3404 (Single) | \$15.89 | \$14.00 |
| 61" | 5101755S (set) | \$68.99 | |
| PROPARTS ALTERNATIVE | 14539 | \$18.00 | \$17.00 |



Ferris IS2100Z

| Deck Size | Order Number | Price | 3 or More |
|----------------------|----------------|---------|-----------|
| 52" | 5101756S (set) | \$49.95 | |
| PROPARTS ALTERNATIVE | 3404 (Single) | \$15.89 | \$14.00 |
| 61" | 5101755S (set) | \$68.99 | |
| PROPARTS ALTERNATIVE | 14539 | \$18.00 | \$17.00 |

Gravely Mower Blades

Shop from OEM and After-market Gravely Blades



Gravely Pro-Turn 400

| Deck Size | Order Number | Sale Price | Alternative | Sale Price | 3 or More |
|-----------|--------------|------------|-------------|------------|-----------|
| 52" | 00450300 | \$23.95 | 3374 | \$17.95 | \$16.00 |
| 60" | 09081200 | \$24.95 | 13624 | \$18.99 | \$17.49 |
| 72" | 04774600 | \$32.95 | | | |

Gravely Pro-Turn 200

| Deck Size | Order Number | Sale Price | Alternative | Sale Price | 3 or More |
|-----------|--------------|------------|-------------|------------|-----------|
| 52" | 00450300 | \$23.95 | 3374 | \$17.95 | \$16.00 |
| 60" | 09081200 | \$24.95 | 13624 | \$18.89 | \$17.49 |
| 72" | 04774600 | \$32.95 | | | |



Gravely Pro-Turn 100, 300, 500

| Deck Size | Order Number | Sale Price | Alternative | Sale Price | 3 or More |
|-----------|--------------|------------|-------------|------------|-----------|
| 48" | 00450200 | \$23.95 | 3400 | \$17.95 | \$16.00 |
| 52" | 00450300 | \$23.95 | 3404 | \$15.89 | \$14.00 |
| 60" | 09081200 | \$24.95 | 13624 | \$18.99 | \$17.49 |



Gravely Pro-Stance

| Deck Size | Order Number | Sale Price | Alternative | Sale Price | 3 or More |
|-----------|--------------|------------|-------------|------------|-----------|
| 36" | GDU10231 | \$26.95 | 3404 | \$14.89 | \$12.00 |
| 48" | 00450200 | \$23.95 | 3400 | \$17.95 | \$16.00 |
| 52" | 00450300 | \$23.95 | 3404 | \$14.89 | \$12.00 |
| 60" | 09081200 | \$24.95 | 13624 | \$18.99 | \$17.49 |



Gravely Pro-Walk Hydro

| Deck Size | Order Number | Sale Price | Alternative | Sale Price | 3 or More |
|-----------|--------------|------------|-------------|------------|-----------|
| 36" | 00450300 | \$23.95 | 3404 | \$17.95 | \$16.00 |
| 48" | 00450200 | \$23.95 | 3400 | \$17.95 | \$16.00 |
| 52" | 00450300 | \$23.95 | 3404 | \$15.89 | \$14.00 |
| 60" | 09081200 | \$24.95 | 13624 | \$18.95 | \$17.49 |



Gravely Pro-Turn, ZX, Z

| Deck Size | Order Number | Sale Price | Alternative | Sale Price | 3 or More |
|-----------|--------------|------------|-------------|------------|-----------|
| 48" | 00450200 | \$23.95 | 3400 | \$17.95 | \$16.00 |
| 52" | 00450300 | \$23.95 | 3404 | \$14.89 | \$12.00 |
| 60" ZX | 03253900 | \$27.95 | 13624 | \$18.99 | \$17.49 |
| 60" | 09081200 | \$24.95 | 13624 | \$18.99 | \$17.49 |



Gravely ZTHD

| Deck Size | Order Number | Sale Price | Alternative | Sale Price | 3 or More |
|-----------|--------------|------------|-------------|------------|-----------|
| 44" | 00450200 | \$23.95 | 3400 | \$17.95 | \$16.00 |
| 48" | 00450200 | \$23.95 | 3400 | \$17.95 | \$16.00 |
| 52" | 03253800 | \$23.95 | 3404 | \$15.89 | \$14.00 |
| 60" | 03253900 | \$27.95 | 6180 | \$15.89 | \$14.00 |



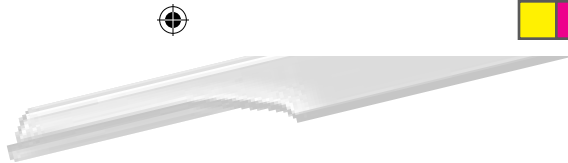
Gravely ZTXL

| Deck Size | Order Number | Sale Price | Alternative | Sale Price | 3 or More |
|-----------|--------------|------------|-------------|------------|-----------|
| 42" | 04769800 | \$21.95 | 16161 | \$14.95 | \$13.00 |
| 52" | 04771200 | \$22.95 | 16289 | \$14.95 | \$12.00 |
| 60" | 04965000 | \$23.95 | | | |

Call 800 305 9255 | Original & Aftermarket Parts

Scag Mower Blades

Shop from OEM and After-market Scag Blades



PROPARTS
ALTERNATIVE
P. PROPARTS
A. APPROVED
A. ALTERNATIVE
P. PART



Scag SW Walk Behind

| Deck Size | Order Number | Price | |
|----------------------|-----------------|---------|-----------|
| 32" | 481706 | \$20.89 | |
| PROPARTS ALTERNATIVE | 3403 | \$15.89 | |
| 32" | Hi-Lift 481710 | \$34.95 | |
| PROPARTS ALTERNATIVE | 6009 | \$18.89 | |
| 36" | 481707 | \$20.89 | 3 Or More |
| PROPARTS ALTERNATIVE | 3404 | \$15.89 | \$14.00 |
| 36" | Hi-Lift 481711 | \$33.95 | |
| PROPARTS ALTERNATIVE | 3442 | \$18.88 | |
| 48" | 481706 | \$20.89 | |
| PROPARTS ALTERNATIVE | 3403 | \$15.89 | |
| 48" | Hi -Lift 481710 | \$34.95 | |
| PROPARTS ALTERNATIVE | 6009 | \$18.89 | |
| 52" | 481707 | \$18.29 | 3 or More |
| PROPARTS ALTERNATIVE | 3404 | \$15.89 | 14.00 |
| 52" | Hi-Lift 481711 | \$33.95 | |
| PROPARTS ALTERNATIVE | 3442 | \$18.88 | |

Scag SWZ Hydro Walk Behind

| Deck Size | Order Number | Price | 3 or More |
|----------------------|-----------------|---------|-----------|
| 36" | 481707 | \$20.89 | |
| PROPARTS ALTERNATIVE | 3404 | \$15.89 | \$14.00 |
| 36" | Hi-Lift 481711 | \$33.95 | |
| PROPARTS ALTERNATIVE | 3442 | \$18.88 | \$17.00 |
| 48" | 481706 | \$20.89 | |
| PROPARTS ALTERNATIVE | 3403 | \$15.89 | |
| 48" | Hi -Lift 481710 | \$34.95 | |
| PROPARTS ALTERNATIVE | 6009 | \$18.89 | |
| 52" | 481707 | \$20.89 | |
| PROPARTS ALTERNATIVE | 3404 | \$15.89 | \$14.00 |
| 52" | Hi-Lift 481711 | \$33.95 | |
| PROPARTS ALTERNATIVE | 3442 | \$15.95 | \$14.95 |
| 61" | 481708 | \$23.95 | |
| PROPARTS ALTERNATIVE | 3434 | \$15.89 | \$14.00 |
| 61" | Hi-Lift 481712 | \$38.95 | |
| PROPARTS ALTERNATIVE | 10930 | \$19.80 | \$17.00 |



Scag Patriot

| Deck Size | Order Number | Price | 3 or More |
|----------------------|--------------|---------|-----------|
| 52" | 482878 | \$19.98 | |
| PROPARTS ALTERNATIVE | 3404 | \$15.89 | \$14.00 |
| 61" | 482879 | \$22.95 | |
| PROPARTS ALTERNATIVE | 3404 | \$15.89 | \$14.00 |

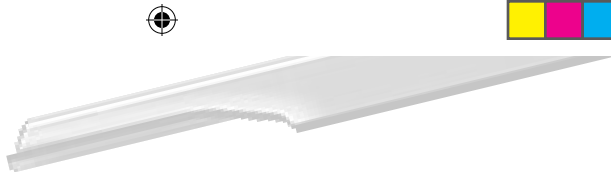


Scag Freedom Z

| Deck Size | Order Number | Price | 3 Or More |
|----------------------|--------------|---------|-----------|
| 48" | 482877 | \$19.98 | |
| PROPARTS ALTERNATIVE | 6009 | \$18.89 | |
| 52" | 482878 | \$19.98 | |
| PROPARTS ALTERNATIVE | 3404 | \$15.89 | \$14.00 |

Scag Mower Blades

Shop from OEM and After-market Scag Blades



Scag Tiger Cat II

| Deck Size | Order Number | Price | |
|----------------------|-----------------------|---------|-----------|
| 48" | 482877 | \$19.98 | |
| PROPARTS ALTERNATIVE | 6009 | \$18.89 | |
| 48" | Mulching Blade 483316 | \$32.89 | |
| PROPARTS ALTERNATIVE | 6300 | \$15.89 | |
| 52" | 482878 | \$19.98 | 3 or More |
| PROPARTS ALTERNATIVE | 3404 | \$15.89 | \$14.00 |
| 52" | Mulching Blade 483317 | \$31.49 | |
| PROPARTS ALTERNATIVE | 9229 | \$19.49 | \$18.00 |
| 61" | 482879 | \$22.95 | |
| PROPARTS ALTERNATIVE | 3434 | \$15.89 | \$14.00 |
| 61" | Mulching Blade 483318 | \$32.20 | |
| PROPARTS ALTERNATIVE | 9230 | \$19.89 | \$18.00 |

PROPARTS ALTERNATIVE
P. PROPARTS
A. APPROVED
A. ALTERNATIVE
P. PART



Scag SVR-V Ride II

| Deck Size | Order Number | Price | 3 Or More |
|----------------------|----------------------|---------|-----------|
| 36 | 482878 | \$19.89 | |
| PROPARTS ALTERNATIVE | 3404 | \$15.89 | \$14.00 |
| 36 | Hi-Lift Blade 482879 | \$21.95 | |
| PROPARTS ALTERNATIVE | 3434 | \$15.89 | \$14.00 |
| 48 | 482877 | \$19.98 | |
| PROPARTS ALTERNATIVE | 6009 | \$18.89 | |
| 48 | Hi-Lift Blade 481710 | \$34.95 | |
| PROPARTS ALTERNATIVE | 6009 | \$18.89 | |
| 52 | 482878 | \$19.98 | |
| PROPARTS ALTERNATIVE | 3404 | \$15.89 | \$14.00 |
| 52 | Hi-Lift Blade 481711 | \$33.95 | |
| PROPARTS ALTERNATIVE | 3442 | \$18.88 | \$17.00 |
| 61 | 482881 | \$28.89 | |
| PROPARTS ALTERNATIVE | 3434 | \$15.89 | \$14.00 |
| 61 | Hi-Lift Blade 481712 | \$38.95 | |
| PROPARTS ALTERNATIVE | 10930 | \$20.89 | |



Scag Cheetah

| Deck Size | Order Number | Price |
|----------------------|--------------|---------|
| 48" | 482877 | \$19.89 |
| PROPARTS ALTERNATIVE | 6009 | \$18.89 |
| 52" | 482878 | \$19.98 |
| PROPARTS ALTERNATIVE | 3404 | \$15.89 |
| 61" | 482881 | \$28.89 |
| PROPARTS ALTERNATIVE | 3434 | \$15.49 |
| 72" | 482882 | \$28.89 |
| PROPARTS ALTERNATIVE | 6026 | \$19.98 |

Fluid Film
 • Protects against corrosion
 • Will not harm paint
 • Stops existing corrosion

Order Number
 15302
 Price
\$12.99



Blade Sharpening & Balancing Tools

Precision Blade Balancer

Order number : 13216
 Heavy duty precision blade balancer provides accurate blade balancing to increase the life of your mower and reduce vibrations, while providing a smoother cut.

Sale Price: \$149.00



Blade Balancer

Order number : 42-100
 Die-Cast balancer is perfect for quick blade balancing.

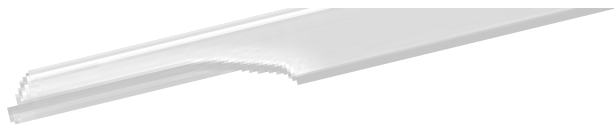
Sale Price: \$5.89



Call 800 305 9255 | Original & Aftermarket Parts

Scag Mower Blades

Shop from OEM and After-market Scag Blades



Scag Liberty Z

| Deck Size | Order Number | Price | 3 Or More |
|----------------------|--------------|---------|-----------|
| 36" | 482878 | \$19.89 | |
| PROPARTS ALTERNATIVE | 3404 | \$15.89 | \$14.00 |
| 48" | 482877 | \$19.98 | |
| PROPARTS ALTERNATIVE | 6009 | \$18.89 | |
| 52" | 482878 | \$19.98 | |
| PROPARTS ALTERNATIVE | 3404 | \$15.89 | \$14.00 |

PROPARTS ALTERNATIVE
P. PROPARTS
A. APPROVED
A. ALTERNATIVE
P. PART



Scag Turf Tiger II

| Deck Size | Order Number | Price | 3 or More |
|----------------------|--------------|---------|-----------|
| 52" | 482878 | \$19.89 | |
| PROPARTS ALTERNATIVE | 3404 | \$15.89 | \$14.00 |
| 61" | 482879 | \$22.95 | |
| PROPARTS ALTERNATIVE | 3434 | \$15.89 | \$14.00 |
| 61" | 482881 | \$28.89 | |
| PROPARTS ALTERNATIVE | 3434 | \$15.49 | \$14.00 |
| 72" | 482882 | \$28.89 | |
| PROPARTS ALTERNATIVE | 6026 | \$19.98 | |

Snapper Pro Mower Blades

Shop from OEM and After-market Snapper Blades



Snapper Pro SW25

| Deck Size | Order Number | Price | 3 or More |
|----------------------|-----------------|---------|-----------|
| 36" | 5101756X2 (set) | \$44.59 | |
| PROPARTS ALTERNATIVE | 3404 (Single) | \$15.89 | \$14.00 |
| 48" | 5101986S (set) | \$59.99 | |
| PROPARTS ALTERNATIVE | 9009 (Single) | \$16.89 | |



Snapper Pro SW35

| Deck Size | Order Number | Price | 3 or More |
|----------------------|----------------|---------|-----------|
| 48" | 5101986S (Set) | \$59.99 | |
| PROPARTS ALTERNATIVE | 3403 (Single) | \$15.89 | |
| 52" | 5101756S (Set) | \$49.95 | |
| PROPARTS ALTERNATIVE | 3404 (Single) | \$15.89 | \$14.00 |
| 61" | 5101755S (Set) | \$68.99 | |
| PROPARTS ALTERNATIVE | 14539 | \$18.00 | \$17.00 |



Snapper Pro S125T

| Deck Size | Order Number | Price | 3 or More |
|----------------------|----------------|---------|-----------|
| 52" | 5101756S (set) | \$49.95 | |
| PROPARTS ALTERNATIVE | 3404 (Single) | \$15.89 | \$14.00 |
| 61" | 5101755S (set) | \$68.99 | |
| PROPARTS ALTERNATIVE | 14539 | \$18.00 | \$17.00 |



Snapper Pro S150XT

| Deck Size | Order Number | Price | 3 or More |
|----------------------|----------------|---------|-----------|
| 52" | 5101756S (set) | \$49.95 | |
| PROPARTS ALTERNATIVE | 3404 (Single) | \$15.89 | \$14.00 |

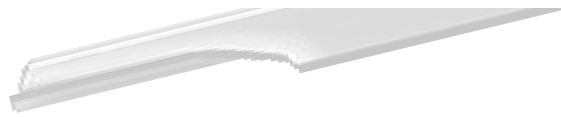
Snapper Pro Mower Blades

Shop from OEM and After-market Snapper Blades



Snapper Pro S50XT

| Deck Size | Order Number | Price | 3 or More |
|----------------------|-----------------|---------|-----------|
| 36" | 5101756X2 (set) | \$44.99 | |
| PROPARTS ALTERNATIVE | 3404 (Single) | \$15.89 | \$12.00 |
| 48" | 5101986S (set) | \$59.99 | |
| PROPARTS ALTERNATIVE | 3403 | \$15.89 | \$14.00 |



PROPARTS ALTERNATIVE
P. PROPARTS
A. APPROVED
A. ALTERNATIVE
P. PART



Snapper Pro S200XT

| Deck Size | Order Number | Price | 3 or More |
|----------------------|----------------|---------|-----------|
| 61" | 5101755S (set) | \$68.99 | |
| PROPARTS ALTERNATIVE | 3434 (Single) | \$15.49 | \$14.00 |
| 72" | 5102227S (set) | \$96.70 | |
| PROPARTS ALTERNATIVE | 16516 (Single) | \$18.00 | |

Toro Mower Blades

Shop from OEM and After-market Toro Blades



Toro Commercial 21

| Deck Size | Order Number | Price |
|----------------------|-----------------|---------|
| 21" | 125-1072-03 | \$19.95 |
| 30" | 116-6358-03 | \$16.49 |
| PROPARTS ALTERNATIVE | 14420 - FOR 30" | \$13.49 |

PROPARTS ALTERNATIVE
P. PROPARTS
A. APPROVED
A. ALTERNATIVE
P. PART



Toro Grandstand

| Deck Size | Order Number | Price |
|----------------------|--------------|---------|
| 36" | 105-7781-03 | \$18.89 |
| PROPARTS ALTERNATIVE | 3404 (each) | \$15.89 |
| 48" | 107-3194-03 | \$23.98 |
| 52" | 105-7781-03 | \$18.89 |
| PROPARTS ALTERNATIVE | 3404 (each) | \$15.89 |
| 60" | 105-7718-03 | \$21.89 |
| PROPARTS ALTERNATIVE | 6083 (each) | \$15.89 |

Mo-Deck

Allows for easier cleaning of mower deck. Stop grass from sticking to underside of deck.

MODECK

Price \$7.95

12 or more Price \$6.95 ea



Toro Z-Master 6000 Series

| Deck Size | Order Number | Price | 3 or More |
|----------------------|---------------|---------|-----------|
| 52" | 105-7781-03 | \$18.89 | \$17.00 |
| PROPARTS ALTERNATIVE | 3404 (Single) | \$15.89 | \$14.00 |
| 60" | 105-7718-03 | \$21.89 | \$18.89 |

affirm
BUY NOW & PAY LATER
 PROPARTS DIRECT GIVES YOU THE OPTION TO BUY THE PARTS YOU NEED NOW AND PAY OVER TIME WITH AFFIRM. CHOOSE AFFIRM AT CHECKOUT TO APPLY FOR FIXED MONTHLY PAYMENT OPTIONS THAT FIT ANY BUDGET.
*SUBJECT TO ELIGIBILITY. PAYMENT OPTIONS THROUGH AFFIRM ARE PROVIDED BY THESE LENDING PARTNERS: AFFIRM.COM/LENDERS.

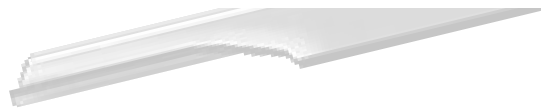
Call us for Great Deals On Bulk Blade Orders!

Let our team of parts specialists put together the best bulk blade package deal for you, Give us a call and see what ProParts can do for you!
Call us at 800 305 9255

Call 800 305 9255 | Original & Aftermarket Parts

Toro Mower Blades

Shop from OEM and After-market Toro Blades



Toro Z-Master 3000 Series

| Deck Size | Order Number | Price | |
|----------------------|------------------|---------|-----------|
| 48" | 107-3192-03 | \$19.89 | |
| PROPARTS ALTERNATIVE | 3403 (Single) | \$15.89 | |
| 52" | 105-7781-03 | \$18.89 | 3 or more |
| PROPARTS ALTERNATIVE | 3404 (Single) | \$15.89 | \$12.00 |
| 60" | 105-7718-03 | \$21.89 | \$18.89 |
| PROPARTS ALTERNATIVE | 791-264 (Single) | \$15.89 | |
| 72" | 105-7784-03 | \$28.89 | |
| PROPARTS ALTERNATIVE | 791-627 (Single) | \$22.89 | |

PROPARTS ALTERNATIVE
P. PROPARTS
A. APPROVED
A. ALTERNATIVE
P. PART



Toro Z-Master 5000 Series & Propane Units

| Deck Size | Order Number | Price | |
|----------------------|--------------|---------|-----------|
| 48" | 107-3192-03 | \$19.89 | |
| PROPARTS ALTERNATIVE | 15000 | \$16.89 | |
| 52" | 105-7781-03 | \$19.89 | 3 or More |
| PROPARTS ALTERNATIVE | 3404 | \$15.89 | \$14.00 |
| 60" | 105-7718-03 | \$21.89 | \$18.89 |
| PROPARTS ALTERNATIVE | 791-264 | \$15.89 | |
| 72" | 105-7784-03 | \$28.89 | |
| PROPARTS ALTERNATIVE | 791-627 | \$22.89 | |



Toro Z-Master 7000 Series

| Deck Size | Order Number | Price | |
|----------------------|--------------|---------|-----------|
| 52" | 105-7781-03 | \$18.89 | 3 Or More |
| PROPARTS ALTERNATIVE | 3404 | \$15.89 | \$14.00 |
| 60" | 105-7718-03 | \$21.89 | \$18.89 |
| PROPARTS ALTERNATIVE | 791-264 | \$15.89 | |
| 72" | 105-7784-03 | \$28.89 | |
| PROPARTS ALTERNATIVE | 791-627 | \$22.89 | |



Toro 8000 Series Collector

| Deck Size | Order Number | Price |
|-----------|--------------|---------|
| 42" | 130-2859 | \$20.99 |
| 42" | 130-2860 | \$20.99 |
| 48" | 130-2862 | \$22.58 |
| 48" | 130-2861 | \$22.55 |



Toro Shear Pin
 Used on Exmark Navigator & Toro 8000 series Zero-turns.
Order Number : 99-0283
Price . . \$5.89
 10 or more \$5.49 ea.
Nut for Shear Pin
Order Number 3296-42
Price \$0.68 ea.
 10 or more \$0.48 ea.

Toro Shear Pin

Used on Exmark Navigator & Toro 8000 series Zero-turns.

Order Number : 99-0283

Price . . \$5.89

10 or more \$5.49 ea.

Wright Mower Blades

Shop from OEM and After-market Wright Blades



PROPARTS
ALTERNATIVE

P. PROPARTS
A. APPROVED
A. ALTERNATIVE
P. PART



Wright Stand-On & Wright Sport Mowers


| Deck Size | Order Number | Price |
|----------------------|--------------|---------|
| 32" / 48" | 71440002 | \$18.98 |
| PROPARTS ALTERNATIVE | 91-620 | \$15.89 |
| Fusion Edge | 71440008 | \$20.95 |
| PROPARTS ALTERNATIVE | 15094 | \$16.49 |
| Mulching | 71490001 | \$23.95 |
| PROPARTS ALTERNATIVE | 14458 | \$15.89 |
| 36" / 52" | 71440001 | \$20.95 |
| PROPARTS ALTERNATIVE | 3404 | \$15.89 |
| Fusion Edge | 71440001 | \$20.95 |
| PROPARTS ALTERNATIVE | 3404 | \$15.89 |
| Mulching | 71490002 | \$23.95 |
| PROPARTS ALTERNATIVE | 6291 | \$16.49 |
| Deck Size | Order Number | Price |
| 42" / 61" | 71440003 | \$21.95 |
| PROPARTS ALTERNATIVE | 3434 | \$15.89 |
| Fusion Edge | 71440010 | \$22.49 |
| PROPARTS ALTERNATIVE | 6272 | \$17.49 |
| Mulching | 71490003 | \$25.99 |
| 72" | 71440014 | \$26.95 |
| PROPARTS ALTERNATIVE | 6026 | \$19.89 |
| Hardened Edge | 96-341 | \$24.89 |

Wright Mulch Kits



Mulch kits are a great alternative to collecting clippings and leaves. The recirculating baffles break down clippings into small and easily biodegradable pieces.

| Deck Size | Aero Core Deck | Price | Reg 5" Deck | Price | |
|-------------|----------------|------------------------------------|-------------|----------|----------|
| 32 | 95460029 | \$369.99 | 95480003 | \$329.99 | |
| 36 | 95480005 | \$369.99 | 95470001 | \$329.99 | |
| 42 | 95480006 | \$369.99 | 95480002 | \$329.99 | |
| 48 | 95430009 | \$399.99 | 95430001 | \$349.99 | |
| 52 | 95440011 | \$399.99 | 95440001 | \$349.99 | |
| 61 | 95450011 | \$399.99 | 95450001 | \$359.99 | |
| 72 | 98460069 | \$429.99 | 98460069 | \$379.99 | |
| Stander B | | | | | |
| 32 | 95460030 | \$329.99 | 48 | 95430009 | \$349.99 |
| 36 | 95460031 | \$329.99 | 52 | 95440011 | \$389.99 |
| Baffle Kits | | | | | |
| 52" | 98440015 | Tight Flow Baffle Aero-Core Deck | | \$349.99 | |
| 61" | 98450014 | Tight Flow Baffle Aero-Core Deck | | \$359.99 | |
| 72" | 98460089 | Tight Flow Baffle Aero-Core Deck | | \$379.99 | |
| | 93460215 | Block Plate, Easy On/Off Aero Core | | \$105.99 | |
| | 93460031 | Block Off Plate - Classic Deck | | \$107.99 | |



Professional Deck Scraper

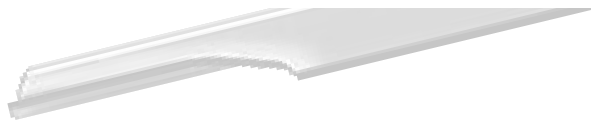
Designed for Any deck. Specifically designed for Commercial mower deck. Special curved blade is flexible and ergonomically designed.

Order number : GB2002

Sale Price: \$9.99

Wright Mower Blades

Shop from OEM and After-market Wright Blades



Wright Walk-behind Mowers

| Deck Size | Order Number | Price | |
|----------------------|--------------|---------|-----------|
| 32" / 48" | 71440002 | \$18.98 | 3 or More |
| PROPARTS ALTERNATIVE | 91-620 | \$15.89 | \$14.89 |
| Fusion Edge | 71440008 | \$20.95 | |
| PROPARTS ALTERNATIVE | 15094 | \$16.49 | |
| Mulching | 71490001 | \$23.95 | |
| PROPARTS ALTERNATIVE | 14458 | \$15.89 | |
| 36" / 52" | 71440001 | \$20.95 | |
| PROPARTS ALTERNATIVE | 3404 | \$15.89 | \$14.89 |
| Fusion Edge | 71440001 | \$20.95 | |
| PROPARTS ALTERNATIVE | 96-344 | \$17.98 | |
| Mulching | 71490002 | \$23.95 | |
| PROPARTS ALTERNATIVE | 6291 | \$16.49 | |
| 42" / 61" | 71440003 | \$21.95 | |
| PROPARTS ALTERNATIVE | 3434 | \$15.89 | |
| Fusion Edge | 71440010 | \$22.49 | |
| PROPARTS ALTERNATIVE | 6272 | \$17.49 | |
| Mulching | 71490003 | \$24.99 | |

PROPARTS ALTERNATIVE
P. PROPARTS
A. APPROVED
A. ALTERNATIVE
P. PART



Wright Mid-Mount Mowers

| Deck Size | Order Number | Price | |
|----------------------|--------------|---------|-----------|
| 32" / 48" | 71440002 | \$18.98 | 3 or More |
| PROPARTS ALTERNATIVE | 91-620 | \$15.89 | \$14.89 |
| Fusion Edge | 71440008 | \$20.95 | |
| PROPARTS ALTERNATIVE | 15094 | \$16.49 | |
| Mulching | 71490001 | \$23.95 | |
| PROPARTS ALTERNATIVE | 14458 | \$15.98 | |
| 36" / 52" | 71440001 | \$20.95 | |
| PROPARTS ALTERNATIVE | 3404 | \$15.89 | \$14.89 |
| Fusion Edge | 71440001 | \$20.49 | |
| PROPARTS ALTERNATIVE | 3404 | \$15.89 | |
| Mulching | 71490002 | \$23.49 | |
| PROPARTS ALTERNATIVE | 6291 | \$16.49 | |
| 42" / 61" | 71440003 | \$22.95 | |
| PROPARTS ALTERNATIVE | 3434 | \$15.49 | |
| Fusion Edge | 71440010 | \$22.49 | |
| PROPARTS ALTERNATIVE | 6272 | \$17.49 | |
| Mulching | 71490003 | \$24.99 | |

Blade Balancer

Order number : 42-100

Die-Cast balancer is perfect for quick blade balancing.

Sale Price: \$5.89



Mo-Deck

Allows for easier cleaning of mower deck.

Order Number :
MODECK

Price . . \$7.95
12 or more \$6.95 ea.



Fluid Film

- Protects against corrosion
- Will not harm paint
- Stops existing corrosion

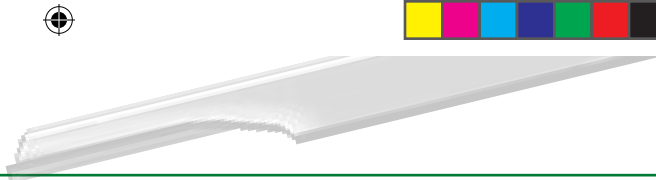
Order Number :
15302

Price . . \$12.99

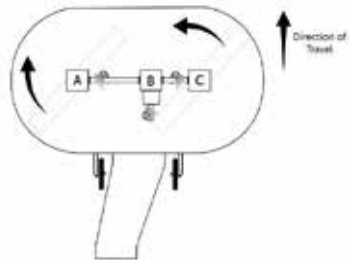


Walker Mower Blades

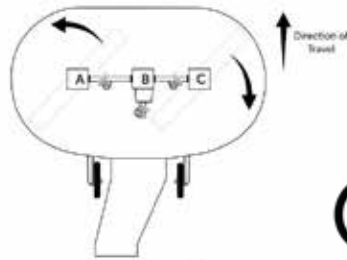
Shop from OEM and After-market Walker Blades



Collection Decks

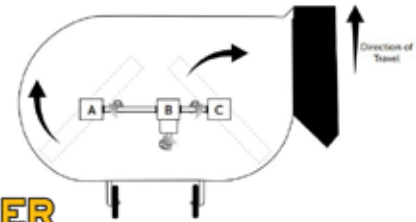


Collection Deck Standard Rotation



Collection Deck Reverse Rotation

Side / Rear Discharge Decks



Side Discharge Deck Rotation



| Deck Size | Order Number LH | Order Number RH | Price |
|---|----------------------|----------------------|----------|
| DC36 | 5705-2 | 5705-0 | \$30.29 |
| Blade Hub Set 36" Includes Hubs and shear pins | | 5705-6 | \$126.90 |
| DC36R | 5705-35 | 5705-36 | \$24.60 |
| DC42 | 5705-3 | 5705-4 | \$32.00 |
| PROPARTS ALTERNATIVE | 3346 Replaces 5705-6 | 3345 Replaces 5705-4 | \$20.49 |
| Blade Hub Set 42" Includes Hubs and Shear pins | | 5705-8 | \$139.00 |
| DC42R | 5705-4 | 5705-3 | \$32.36 |
| DC48 | 7705-1 | 7705-2 | \$34.00 |
| 2 or More \$18.00 ea. PROPARTS ALTERNATIVE | 6170 Replaces 7705-1 | 6169 Replaces 7705-2 | \$20.95 |
| DGHS48R | 7705-2 | 7705-1 | \$34.00 |
| Blade hub Set 48" Includes Hubs and Shear pins | | 7705-3 | \$137.00 |
| DC52R | 7705-35 | 7705-34 | \$35.85 |
| Blade Hub Set 52" Includes Hubs and Shear pins | | 7705-41 | \$139.78 |

| Deck Size | Order Number LH | Order Number RH | Price |
|----------------------|-----------------|-----------------|----------|
| DSD36 | 5705-1 | 5705-1 | \$28.78 |
| Blade Hub Set 36" | | 5705-5 | \$127.28 |
| DSD42 | 5705-3 | 5705-3 | \$32.36 |
| PROPARTS ALTERNATIVE | 3446 | 3446 | \$20.49 |
| Blade Hub Set 42" | | 5705-7 | \$131.09 |
| DSD48 | 7705-1 | 7705-1 | \$34.00 |
| DSD52 (3) | 5705-14 | 5705-14 | \$27.99 |
| DSD56 (3) | 5705-0 | 5705-0 | \$30.29 |



Walker DGHS48 Deck
Original Deck Shell. Includes decals, rubber mats

Replaces 7701, 7702-17

Order Number: 7702-20
Price: \$1,499.95



Walker Sheer Pins
Original Walker Mower Blade Sheer Pin
Size: 10-24 x 5/8 SHC Screw
Order Number: F202
Sale Price: \$0.99
10 or more \$0.88 ea.



Original Walker Blade Keps Nut
Size: 10-24 Lock Nut
Order Number: F002
Sale Price: \$0.49 ea.
10 or more \$0.39 ea.

Mulching Decks

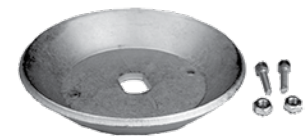
| Deck Size | Order Number LH | Order Number RH | Price |
|---------------------|-----------------------------------|-----------------|----------|
| DML36 | 5705-23 | 5705-23 | \$24.95 |
| DML42A | 5705-28 | 5705-28 | \$27.10 |
| DML42B | 5705-11 | 5705-11 | \$32.39 |
| DML48 | Mulch Blade kit with Hubs 7705-45 | | \$223.65 |
| Serrated Wing Blade | 7705-59 | 7705-58 | \$33.39 |

Dense Pak Blade Set



Dense-pak blade set comes with serrated blades for DC48 & DC48R Decks
Increase collected grass density in the catcher box: Up to 10%
Order Number: 7705-60
Sale Price: \$149.95

Blade Hub Guard



Blade hub and Trash Guard
Used on Walker DGHS 48 Deck
Protects Spindle from debris. Includes Shear pins and Nuts.
Order Number: 10019
Sale Price: \$18.95

Call 800 305 9255 | Original & Aftermarket Parts

Black Diamond Line

Razor Sharp Edges - Designed for 1-pass Cutting
Twisted Geometry - Decreases Drag, Higher RPM
Optimizes Fuel Consumption
Durable Design Proven to hold up against hard surfaces



| Order Number | Line Size | Weight | Sale Price |
|--------------|-----------|---------|-------------|
| 330095073 | .095 | 885 ft | \$49.95 ea. |
| 330095075 | .095 | 1394 ft | \$74.95 ea. |

STIHL AUTO-CUT 25-2

Replacement Trimmer Head

2 or more
\$19.88
Each



Order Number: 14073
Price **\$26.⁹⁵ ea.**

Fits Stihl Trimmers FS80, FS81, FS83, FS85, FS86, FS88, FS90, FS91, FS96, FS100, FS106, FS108, FS110, FS120, FS130, FS200, FS250, FS350, FS450, FS500

Replacement Parts for Spool

| Order Number | Item | Price |
|--------------|--------|---------|
| 14501 | Cover | \$11.05 |
| 15152 | Spring | \$1.80 |
| 15151 | Eyelet | \$1.24 |
| 14500 | Spool | \$6.55 |



Check out our Friends
@bestbuddycutters
on Instagram and the top
work they do!

affirm
BUY NOW & PAY LATER
PROPARTS DIRECT GIVES YOU THE OPTION TO BUY THE PARTS
YOU NEED NOW AND PAY OVER TIME WITH AFFIRM. CHOOSE
AFFIRM AT CHECKOUT TO APPLY FOR FIXED MONTHLY

Trimmer Line Cutter

Line cutter simple & safe to use.
Fits on key ring.
Cuts line from .056 to .130

Order Number
12820 **\$3.95 ea**



Cross Fire Line

Razor Sharp Edges - Designed for 1-pass Cutting
Twisted Geometry - Decreases Drag, Higher RPM
Optimizes Fuel Consumption
Durable Design Proven to hold up against hard surfaces



| Order Number | Line Size | Weight | Sale Price |
|--------------|-----------|--------|-------------|
| 314095053 | .095 | 3 lbs | \$39.89 ea. |
| 316095053 | .095 | 5 lbs | \$59.99 ea. |

Round Line

Round line feeds easier through the trimmer head.
Trimmer line can be used in all trimmers.



| Order Number | Line Size | Weight | Sale Price |
|--------------|-----------|--------|-------------|
| 313095053 | .095 | 3 lbs | \$36.95 ea. |
| 315095053 | .095 | 5 lbs | \$54.95 ea. |

Round Gator Line

Gator Round Line quickly and easily cuts through low grass and grass-like weeds yet is durable enough to tackle sizable brush without breaking. This trimmer line is less likely to bond together in the trimmer head due to its weld-resistant outer layer.



| Order Number | Line Size | Weight | Sale Price |
|--------------|-----------|--------|------------|
| 22-195 | .095 | 3 lb | \$39.95 |
| 22-595 | .095 | 5 lb | \$59.95 |

Oregon Gator Line

Razor Sharp Edges - Designed for 1-pass Cutting
Twisted Geometry - Decreases Drag, Higher RPM
Optimizes Fuel Consumption
Durable Design Proven to hold up against hard surfaces



| Order Number | Line Size | Weight | Sale Price |
|--------------|-----------|--------|------------|
| Gatorline | | | |
| 21-595 | .095 | 5 lb | \$59.95 |

Square Gator Line

Oregon Magnum Gatorline square string trimmer line incorporates a high-strength inner core with a weld-resistant outer layer for long-lasting characteristics. Fits all standard trimmer heads.



| Order Number | Line Size | Weight | Sale Price |
|--------------|-----------|--------|------------|
| 22-895 | .095 | 3 lb | \$39.95 |
| 22-095 | .095 | 5 lb | \$59.95 |

Platinum Gator Line

Platinum Gatorline Trimmer line is great for professionals because it is better at resisting breakage than standard trimmer line. Plus, it offers outstanding durability and shock absorbency thanks to its highly flexible core. This trimmer line is low noise, which means it produces fewer decibels of noise when it spins, helping you comply with local noise ordinances.



| Order Number | Line Size | Weight | Sale Price |
|--------------------|-----------|--------|------------|
| Platinum Gatorline | | | |
| 20-102 | .095 | 5 lb | \$49.95 |
| 20-113 | .095 | 3 lb | \$69.95 |



VORTEX TRIMMER LINE

Features & Benefits

- Less drag
- Longer wear
- Significant improvement in energy efficiency
- Up to 50% noise reduction in larger diameter lines
- Patented design
- Increased RPMs allows use of larger diameter lines
- More impact power
- Superior tensile strength
- Decreased vibration
- Twisted, Aerodynamic Design

Want Those CRISPY EDGES?



| Order Number | Line Size | Price | 2 or More Each |
|--------------|-----------|---------|----------------|
| 12174 | .080 | \$39.95 | \$34.95 |
| 12175 | .095 | \$39.95 | \$34.95 |
| 12176 | .105 | \$39.95 | \$34.95 |
| 12177 | .130 | \$39.95 | \$34.95 |
| 12178 | .155 | \$39.95 | \$34.95 |
| 12179 | .095 | \$54.95 | \$50.95 |
| 12180 | .105 | \$54.95 | \$50.95 |
| 12181 | .130 | \$54.95 | \$50.95 |
| 12182 | .155 | \$54.95 | \$50.95 |

Follow Connor For all things Trimming



Trimmer Line Cutter

Line cutter simple & safe to use.

Fits on key ring.
Cuts line from .056 to .130

Order Number
12820 **\$3.95 ea**



Trailer Spool Holder

Neatly stores trimmer line out of the way, tension on the spool prevents line from unwinding until you need it. Easily installs on Open and Enclosed Trailers Can Hold 3lb. or 5lb. Spools Hammered paint finish

Order Number: RA-2
PRICE: \$35.99



Call 800 305 9255 | Original & Aftermarket Parts



HAND PUMP AND BATTERY POWERED SPRAYERS MULTI USE SPRAYERS FOR FERT & PESTICIDES



4 Gallon Smith Multi-Use Li-ion S2E Back Pack

The Smith Multi-Use 4 Gallon Lithium-Ion Powered Backpack Sprayer is the ideal applicator that provides consistent, repeatable performance. Spraying up to 50 gallons on one charge of the 18V lithium-ion battery, this sprayer has completely eliminated the need to ever pump again, saving time, energy...and money!

Order Number: 190576

Sale Price: \$239.⁹⁵



2 Gallon Smith Multi-Use 7.2V Li-Ion Sprayer

With faster flow rates, consistent output pressure and no pumping, The Smith Multi-Use 2 Gallon Battery Powered Sprayer with Pump Zero™ technology revolutionizes the compressed air sprayer industry. This lithium-ion powered sprayer will save the user time, money and energy. The rechargeable battery, built into the pump handle, enables the user to spray up to 24 gallons of both liquids and wettable powders on a single charge.

Order Number: 190671

Sale Price: \$128.⁶⁹



2 Gallon Smith Multi-Use Pump Sprayer

The Smith Multi-Use 2 Gallon Manual Pump Sprayer provides versatility for countless professional liquid applications, including turf, pest control and concrete chemicals. With Viton seals and premium components throughout, this unit was built to get the job done.

Order Number: 190684

Sale Price: \$53.⁹⁵



4 Gallon Smith Multi-Use S2 Backpack

The Smith Multi-Use 4 Gallon "No Leak" internal pump backpack is designed with safety and comfort in mind. The internal pump technology eliminates chemicals dripping down the user's back. With premium components throughout, including a thick, adjustable harness with padded straps and chest strap, this sprayer is the workhorse that will get the job done.

Order Number: 190670

Sale Price: \$169.⁹⁵





Echo Air Filter
Fits GT, SRM, HC, PAS & PE models.
Order Number: A226001410
Price \$6.26
10 or more \$5.26 ea



Echo Air Filter
Fits PB403, PB403H, PB403T, PB413H, PB413T, PB500H, PB500T, PB603, PB611, PB620, PB620ST, PB650, PB650H, PB650T, PB651T
Order Number: A226000032
Price \$9.47



Echo Air Filter
Fits EB-633 PB-60H PB-460 PB-600 PB-601 PB-750 PB-755, EB633
Order Number: 13030508361
Price \$12.09

**PB-9010
TUNE UP KIT
90194Y
Price \$34.⁹⁵**



Alternative for RedMax Filters

Filter Replaces 54471501
Order Number: 9909
\$11.89 ea.

Filter Replaces 544271601
Order Number: 10311
\$7.89 ea.



Redmax Air Filter
Fits Redmax EB7000 & EB8000 Series Blowers.
Length: 7 3/4", Height: 13/16", Width: 5 3/32"
Order Number: 544271501
Price \$24.89



Redmax Pre-Filter
Fits Redmax EB7000 & EB8000 Series Blowers.
Order Number: 544271601
Price \$14.99



Shindaiwa Air Filter
Fits Shindaiwa EB-802, EB-802RT, EB854, EB854RT
Order Number: A226000531
Price \$23.80

REPLACEMENT FUEL FILTERS



Order Number: 12952
Price \$3.20
Bag of 10+ \$2.88 ea



Order Number: 12949
Price \$3.49
Bag of 10+ \$3.14 ea



Order Number: 12619
Price \$5.95
Bag of 10+ \$4.95 ea



Order Number: 07 210
Price \$5.47
Bag of 10+ \$4.93 ea



Order Number: 07 217
Fits most trimmers
Replaces Stihl 000-350-3502
Price \$6.50
10 For \$5.85 ea.



Order Number: 25 050 42-S
Price \$10.99
Fits Kohler ECH630-ECH749, ECV630-ECV749



Order Number: 07 109
2332" OD x 1-3/4" Length
Replaces Stihl 0000-350-3500
Price \$7.58
10 For \$6.83 ea.



Order Number: 9025 Replaces Walbro 125-528
Price \$4.09
10 For \$3.69 ea.



Order Number: 07 208
Price \$3.49
For 3/16" fuel line
10 or more \$3.15 ea



Order Number: 9024
Price \$3.29
10 For \$2.97 ea.
Replaces Walbro 1-25-527-01

Fuel Line Remover Tool



This tool is handy for prying fuel line off of the barbed end of a fitting. This tool is hardened and plated to ensure long life. Remove Fuel clamps before use, leverage tool against engine components.

Order Number: 19620 **Price \$38.88**



**Shop Pack of 24 Plugs
Champion OEM Spark Plugs**

| Order Number | Plug Number | Service Pack Cost |
|--------------|-------------|-------------------|
| 322S | RN11YC | \$49.99 |
| 431S | RC14YC | \$59.99 |
| 71S | RC12YC | \$59.99 |
| 841S | J8C | \$59.99 |
| 843S | CJ8 | \$50.95 |
| 845S | J17LM | \$59.99 |

| Order Number | Plug Number | Service Pack Cost |
|--------------|-------------|-------------------|
| 847S | DJ8J | \$59.99 |
| 848S | CJ8Y | \$59.99 |
| 853S | CJ7Y | \$59.99 |
| 861S | J19LM | \$50.95 |
| 868S | RJ19LM | \$69.99 |
| 852S | RCJ6Y | \$69.99 |



All service/shop packs supplies in packages of 24

*Use the assigned part numbers to get these special shop pack prices when ordering

Kawasaki

ENGINES

QUALITY TO THE CORE

Designed for optimum oil flow, pressure, and protection in extreme conditions and high heat.



Kawasaki filters are specifically engineered for optimum flow pressure and protection in constant speed air-cooled and liquid cooled engines.

Kawasaki Oil Filter
For Kawasaki FD, FE, FH, FJ180V and FX engines
Replaces 49065 7010



Order Number:
49065 0724

Price . . . \$9.49 ea.

12 or more

PRICE . . . \$6.89 ea.

Kawasaki Oil Filter
For Kawasaki FX and FJ engines; HT 2-3/8"
Replaces 49065 7007



Order Number:
49065 0721

Price . . . \$9.49 ea.

12 or more

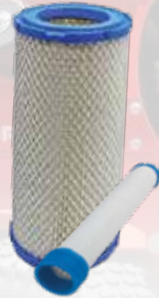
PRICE . . . \$6.89 ea.

Kawasaki Donaldson Canister Air Filter



**Fits FX651V - FX1000V
Internal Vented Carb**

| Order Number | Each |
|--------------|---------|
| 11013-7044 | \$24.95 |
| 11013-7045 | \$22.89 |



**Fits Kawasaki
FH601D- FH721V,
FH770D, FD750D,
FD791D**

| Order Number | Each |
|--------------|---------|
| 11013-7020 | \$24.98 |
| 11013-7019 | \$27.70 |



**Fits Kawasaki
FH451V - FH580V
(Small Canister Filter)**

| Order Number | Price Each |
|--------------|------------|
| 11013-7029 | \$18.95 |

Fuel Filters



Most carbureted air cooled engines

| Order Number | Price Each |
|--------------|------------|
| 49019-0027 | \$7.89 |



All F730V EFI and 850V EFI Engines

| Order Number | Price Each |
|--------------|------------|
| 49019-0031 | \$6.95 |



Fits Kawasaki FD Engines

| Order Number | Price Each |
|--------------|------------|
| 49019-0032 | \$21.98 |



**Fits Kawasaki
FT730V**

(Small Canister Filter)

| Order Number | Price Each |
|------------------|------------|
| 11013-0763 | \$23.09 |
| 11013-0764 (Pre) | \$7.83 |



**Fits Kawasaki FX
Fits FX481V,
FS541V - FX600V
(Small Canister)**

| Order Number | Price Each |
|--------------|------------|
| 11013-7048 | \$27.49 |

Need a Kawasaki Engine?

Contact us with your model and spec number and we can locate the right engine for you.

Need to Repower? Switch From a Kohler or Briggs engine?

CALL 800 305 9255

Scan the QR Code to browse the 2024 Kawasaki engine brochure.



PRO TIP:

Your Model and Spec are located on a tag on the side of the engine cowl.



**Fits Kawasaki FR651V -
FR730V & FS481V - FS730V**

Includes Pre-Filter
Was 99999-0384



| Order Number | Price Each |
|--------------|------------|
| 11029-0031 | \$17.79 |

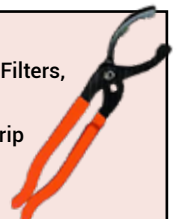
Oil Filter Wrench

Fits 2-1/2" to 4-1/2" Oil Filters,
20 Degree Jaw Angle.

Teeth provide non-slip grip

Order Number: 752-836

Price: \$29.89



Kawasaki K-Tech 4-Cycle Oil is enhanced with Anti-foaming and anti-shear agents, along with other special additives. K-Tech 4-cycle oil also contains Zinc which helps reduce camshaft wear.



Kawasaki
— ENGINES —
GENUINE PARTS

Kawasaki K-Tech 4-Cycle Oil 5 Quart Bottles Now In-Stock!

| Order Number | Description | Each | Price Per Case (12) | |
|--------------|------------------|--------|---------------------|----------|
| 99969-6281 | SAE 30 (1 Qt.) | \$7.49 | (\$6.09 ea.) | \$73.08 |
| 99969-6081 | 10W-30 (1 Qt.) | \$7.49 | (\$6.09 ea.) | \$73.08 |
| 99969-6296 | 10W-40 (1 Qt.) | \$7.49 | (\$6.09 ea.) | \$73.08 |
| 99969-6501 | 15W-50 Synthetic | \$8.98 | (\$8.49 ea.) | \$104.88 |
| 99969-6298 | 20W-50 (1 Qt.) | \$8.98 | (\$6.69 ea.) | \$80.28 |

| Order Number | Description | Each | 3 Or More |
|--------------|----------------|---------|-------------|
| 99969-6502 | 15W-30 (5 Qt.) | \$49.95 | \$44.59 ea. |
| 99969-6504 | 20W-50 (5 Qt.) | \$49.95 | \$44.59 ea. |

Fits Kawasaki FR541V - FR600V



Was 99999-0383

| Order Number | Price Each |
|--------------|------------|
| 11013-0727 | \$11.85 |

Fits FH381V-FH580V KAI Engines



Pre-Filter Kawasaki 11013-7025

| Order Number | Price Each |
|--------------|------------|
| 11013-7031 | \$22.89 |
| 11013-7025 | \$5.83 |

Fits Kawasaki FH451V - FH580V

Non KAI Engine



Pre-Filter Kawasaki 11013-7002

| Order Number | Price Each |
|--------------|------------|
| 11013-7002 | \$18.42 |
| 11013-7033 | \$5.25 |

Fits Kawasaki FH381/FH430 Non-KAI Engine



Pre-Filter Kawasaki 11013-7034

| Order Number | Price Each |
|--------------|------------|
| 11013-7017 | \$16.46 |
| 11013-7034 | \$6.39 |

Fits Kawasaki FH601V - FH721V

Internally Vented Carb W / Pre-Filter



| Order Number | Price Each |
|--------------|------------|
| 11029-7015 | \$26.47 |

Fits FJ180V KAI Engines

(Previously 11029-0019)



| Order Number | Price Each |
|--------------|------------|
| 11029-0049 | \$24.49 |

Fits FJ180V Most M & S Series



| Order Number | Price Each |
|--------------|------------|
| 11013-2232 | \$4.38 |

Fits FJ180V M Series



| Order Number | Price Each |
|--------------|------------|
| 11029-0018 | \$13.70 |

Fits FJ180V S Series



| Order Number | Price Each |
|--------------|------------|
| 11029-0017 | \$11.20 |

Kawasaki FS, FX Electric Starter

FITS MODELS - Kawasaki: FS541V-AS30, FS600V-CS24, FS600V-DS24, FS730V-AS19, FX481V-BS09, FX541V-DS05, FX541V-ES00, FX600V-DS05, FX600V-DS11, FX600V-ES00, FX600V-ES02, FX600V-FS09, FX651V-ES00, FS691V-AS24, FS691V-AS26, FS691V-AS28, FS691V-ES00, FX730V-AS29, FX730V-AS31, FX730V-AS40, FX730V-ES00.

12-Volt Starter.
Replaces 21163-0756



SAVE \$30
Regular \$269.95

| Order Number | Price Each |
|--------------|------------|
| 99996-6120 | \$239.95 |

Kawasaki Flexible Oil Drain Hose



Length: 16"
Dia: 3/4"

Hi-temperature, heavy duty braided rubber hose. Designed for durability and longevity. Pressure tolerance: 400 psi. Durable all brass fittings. For use on all Kawasaki Engines. Fittings convert to SAE wrench sizes.

| Order Number | Price Each |
|--------------|------------|
| 51044-0902 | \$34.95 |

Call 800 305 9255 | Original & Aftermarket Parts



Kawasaki

— ENGINES —

Tune-Up Kits Give You The Complete Set-Up To Keep Your Engine Running Its Best.

Stay Warranty Compliant with OEM Kawasaki Parts



FX 1000V, 921V Engines

Kit Contains: 2 Bottles of Oil, 1 Oil Filter, 1 Fuel Filter, 1 Inner Air Filter, 1 Out Air Filter, 2 Spark Plugs

| Order Number | OIL |
|-------------------------------|-----------------|
| 99969-6529 | 10W-40 |
| 99969-6530 | 20W-50 |
| YOUR CHOICE SALE PRICE | \$119.95 |



FX 730V, 691V, 651V Carbureted & EFI

Kit Contains: 2 Bottles of Oil, 1 Oil Filter, 1 Fuel Filter, 1 Inner Air Filter, 1 Out Air Filter, 2 Spark Plugs

| Order Number | OIL |
|-------------------------------|-----------------|
| 99969-6527 | 10W-40 |
| 99969-6528 | 20W-50 |
| YOUR CHOICE SALE PRICE | \$119.95 |



FT 730V EFI

Kit Contains: 2 Bottles of Oil, 1 Oil Filter, 1 Fuel Filter, 1 Inner Air Filter, 1 Out Air Filter, 2 Spark Plugs

| Order Number | OIL |
|-------------------------------|-----------------|
| 99969-6545 | 10W-40 |
| 99969-6546 | 20W-50 |
| YOUR CHOICE SALE PRICE | \$109.95 |



FT 730V, 691V, 651V Carbureted

Kit Contains: 2 Bottles of Oil, 1 Oil Filter, 1 Fuel Filter, 1 Inner Air Filter, 1 Out Air Filter, 2 Spark Plugs

| Order Number | OIL |
|-------------------------------|----------------|
| 99969-6569 | 10W-40 |
| 99969-6570 | 20W-50 |
| YOUR CHOICE SALE PRICE | \$99.95 |



FH 770D KAI, 721V, 680V, 661V, 641V, 601V

Kit Contains: 2 Bottles of Oil, 1 Oil Filter, 1 Fuel Filter, 1 Inner Air Filter, 1 Out Air Filter, 2 Spark Plugs

| Order Number | OIL |
|-------------------------------|-----------------|
| 99969-6531 | 10W-40 |
| 99969-6532 | 20W-50 |
| YOUR CHOICE SALE PRICE | \$120.95 |



FH 580V, 541V, 531V, 500V, 451V Standard Air Filter

Kit Contains: 2 Bottles of Oil, 1 Oil Filter, 1 Fuel Filter, 1 Inner Air Filter, 1 Out Air Filter, 2 Spark Plugs

| Order Number | OIL |
|-------------------------------|----------------|
| 99969-6535A | 10W-40 |
| 99969-6536A | 20W-50 |
| YOUR CHOICE SALE PRICE | \$89.95 |

Kawasaki

— ENGINES —

Tune-Up Kits Give You The Complete Set-Up To Keep Your Engine Running Its Best.

Stay Warranty Compliant with OEM Kawasaki Parts



FR 730V, 691V, 651V, All FS Series Carbureted & EFI
Kit Contains: 2 Bottles of Oil, 1 Oil Filter, 1 Fuel Filter, 1 Inner Air Filter, 1 Out Air Filter, 2 Spark Plugs

| Order Number | OIL |
|-------------------------------|----------------|
| 99969-6543 | 10W-40 |
| 99969-6544 | 20W-50 |
| YOUR CHOICE SALE PRICE | \$89.95 |



FX 850V, 801V, 751V Carbureted & EFI
Kit Contains: 2 Bottles of Oil, 1 Oil Filter, 1 Fuel Filter, 1 Inner Air Filter, 1 Out Air Filter, 2 Spark Plugs

| Order Number | OIL |
|-------------------------------|-----------------|
| 99969-6537 | 10W-40 |
| 99969-6538 | 20W-50 |
| YOUR CHOICE SALE PRICE | \$120.00 |



FX600V, 541V, 481V
Kit Contains: 2 Bottles of Oil, 1 Oil Filter, 1 Fuel Filter, 1 Inner Air Filter, 1 Out Air Filter, 2 Spark Plugs

| Order Number | OIL |
|-------------------------------|----------------|
| 99969-6539 | 10W-40 |
| 99969-6540 | 20W-50 |
| YOUR CHOICE SALE PRICE | \$99.95 |



FH 580V, 541V, 480V, 430V, 381V All KAI
Kit Contains: 2 Bottles of Oil, 1 Oil Filter, 1 Fuel Filter, 1 Inner Air Filter, 1 Out Air Filter, 2 Spark Plugs

| Order Number | OIL |
|-------------------------------|----------------|
| 99969-6533A | 10W-40 |
| 99969-6534A | 20W-50 |
| YOUR CHOICE SALE PRICE | \$99.95 |



FH 721V, 680V, 661V, 641V, 601V All with Standard Air Filter
Kit Contains: 2 Bottles of Oil, 1 Oil Filter, 1 Fuel Filter, 1 Inner Air Filter, 1 Out Air Filter, 2 Spark Plugs

| Order Number | OIL |
|-------------------------------|----------------|
| 99969-6525* | 10W-40 |
| 99969-6526* | 20W-50 |
| YOUR CHOICE SALE PRICE | \$99.95 |

* KIT 99969-6525/99969-6526 IS FOR ENGINES WITH INTERNALLY VENTED CARBURETORS ONLY



FR 600V, 541V
Kit Contains: 2 Bottles of Oil, 1 Oil Filter, 1 Fuel Filter, 1 Inner Air Filter, 1 Out Air Filter, 2 Spark Plugs

| Order Number | OIL |
|-------------------------------|----------------|
| 99969-6541 | 10W-40 |
| 99969-6542 | 20W-50 |
| YOUR CHOICE SALE PRICE | \$79.95 |

KOHLER Engines

Unlike standard engine oils, KOHLER genuine oils are specifically formulated for KOHLER engines. KOHLER oils are specially blended with heavy duty, high-temperature additives providing outstanding protection.



Kohler SAE 30

Recommended for high-temperature operations and heavy-duty service

Order Number :
25 357 02-S

Price . . \$8.29 Qt.
12 or more \$7.39 ea.



Kohler 15W-40

Provides improved wear protection, deposit and oil consumption control

Order Number :
25 357 48-S

Price . . \$8.59 Qt.
12 or more \$7.69 ea.



Kohler 10W-30

Protects in a broad range of operating temp. Easier cold weather starting

Order Number :
25 357 64-S

Price . . \$7.59 Qt.
12 or more \$6.89 ea.



Kohler 20W-50

Ideal for heavy-duty service. Ideal for CH940 to CH1000, CV940 - CV1000

Order Number :
25 357 67-S

Price . . \$8.98 Qt.
12 or more \$7.49 ea.



Kohler 10W-40

Great for generators powered by gas fueled engines with flat tappet lifters

Order Number :
25 357 70-S

Price . . \$7.89 Qt.
12 or more \$6.89 ea.

Kohler Oil Filter

Short Kohler Filter
Fits Command, Command Pro

Order Number:
12 050 01S

Price \$8.49 ea.
12 or more . . \$6.89 ea.



Kohler Oil Filter

Tall Kohler Filter
Fits Command, Command Pro

Order Number:
52 050 02S

Price \$8.49 ea.
12 or more . . \$6.89 ea.



NOTE: KOHLER IS CHANGING OVER TO Rehlko

Buy 2 or More
25-083-01-S
\$20.90 ea.

Kohler Donaldson Canister

Buy 2 or More
25-083-03-S
\$18.95 ea.

Fits CH18-CH26, CH620-CH1000, CV17-CV26, CV620, CV1000, LH630-LH775, EFI ECH630-ECH749, ECV630-ECV749

Fits Command Pro CV460-CV493, OHC, TH16, TH18, TH520, TH575

| Order Number | Each | |
|--------------|---------|-------------|
| 25 083 01-S | \$23.90 | 10 or More |
| 25 083 04-S | \$20.95 | \$19.00 ea. |

| Order Number | Each | |
|--------------|---------|-------------|
| 25 083 02-S | \$21.95 | 10 or More |
| 25 083 03-S | \$20.95 | \$19.00 ea. |

Kohler OEM Air Filters

Fits Command Pro CH395, CH440

Pre-filter Included



| Order Number | Your Price Each |
|--------------|-----------------|
| 17 883 03-S1 | \$20.49 |

Fits Command and EFI CH18-CH25, CH620-CH740, CV17-CV23, CV620-CV670, ECH630 ECH749, ECV630-ECV749



Pre-filter Included

| Order Number | Your Price |
|--------------|------------|
| 24 883 03-S1 | \$20.99 |

Fits 3000 Series SH265

Pre-filter Included



| Order Number | Your Price Each |
|--------------|-----------------|
| 18 883 01-S1 | \$17.97 |

Fits Command Pro CH260, CH270

Pre-filter Included



| Order Number | Your Price Each |
|--------------|-----------------|
| 17 883 07-S1 | \$20.49 |

Fits XT Series XT6, XT650, XT675, XT7, XT775, XT800



| Order Number | Your Price Each |
|--------------|-----------------|
| 14 083 19-S | \$10.47 |

Fits 7000 Series 7000 Series KT715 KT745



Pre-filter Included

| Order Number | Your Price Each |
|--------------|-----------------|
| 32 883 09-S1 | \$20.97 |

Kohler OEM STARTERS



Order Number
32 098 10-S
Price
\$198.89

Fits Kohler Courage Twin Engines. CH620, CH640, CH680, CH670, CH682, CH730, CH732, CH740 and others.



Order Number
25 098 24-S
Price
\$209.98

Fits Kohler Command Twin. Includes starter solenoid.



Kohler Vacuum Fuel Pump
Fits Kohler CH18-CH750, CV18-20, SV700 - SV840, ZT710 - ZT740.

Order Number: 24 393 16-S
List Price \$36.09

Sale Price
\$24.89

Kohler Fuel Pump
Used on Kohler CH18, CH20, CH23, CH25, CH27, CH620, CH640, CH670, CH680, CH730, CH740, CH750 engines.



Order Number: 24 559 10-S
List Price \$147.98

Sale Price
\$139.60



Order Number: 25 050 21-S
Price \$6.98

Fits Kohler CH11-CH16, CH410-CH450, CV13-CV16, CV430-CV493



Order Number: 24 050 03-S
Price \$59.89

Kohler EFI Fuel Filter
Fits Kohler EFI CH26, CH735, CH745, CV26, CV735, CV745, EFI LH775



Order Number: 24 050 13-S
Price \$8.95

Fits Kohler CH18-CH25, CH620-CH742, CH750-CH1000, CV18-CV25, CV620-CV742, ECH630-ECH749, ECV630-ECV1000, SV710-SV840, LH630

Fits Command CV11 - CV16

Pre-filter Included

| Order Number | Your Price Each |
|--------------|-----------------|
| 12 883 05-S1 | \$15.89 |



Fits Command Pro CV11 - CV16, CV430 - CV493

Pre-filter Included

| Order Number | Your Price Each |
|--------------|-----------------|
| 12 883 10-S1 | \$15.89 |



Fits Command CH11-CH16, CH410-CH450, M18-M20, KT17, KT19

Pre-filter Included

| Order Number | Your Price Each |
|--------------|-----------------|
| 47 883 01-S1 | \$21.89 |



Fits Confidant ZT710 - ZT740

Pre-filter Included

| Order Number | Your Price each |
|--------------|-----------------|
| 16 883 01-S1 | \$27.49 |



Fits Confidant ZT710 - ZT740, 7000 Series KT715 - KT745

(W / Pro Performance Filtration)

Pre-filter Included

| Order Number | Your Price Each |
|--------------|-----------------|
| 16 883 04-S1 | \$20.47 |



Fits Courage SV470 - SV620

Pre-filter Included

| Order Number | Your Price Each |
|--------------|-----------------|
| 20 883 06-S1 | \$18.49 |



Fits Courage SV710 - SV740

Pre-filter Included

| Order Number | Your Price Each |
|--------------|-----------------|
| 32 883 03-S1 | \$18.49 |



Fits Courage PRO PRO SV810 - SV840

Pre-filter Included

| Order Number | Your Price |
|--------------|------------|
| 32 883 06-S1 | \$19.98 |



Kohler
Maintenance Kits

Next Page

A regular schedule of preventive maintenance with genuine KOHLER parts helps: engine performance, Ensures easy starts, Extends engine life Prevent repairs and Support warranty protection.



FOR COMMAND PRO 824CC

Kit Contains: Air Cleaner, Pre-Cleaner, Oil Filter, Fuel Filter, Oil (3) and Spark Plugs (4)

| Order Number | Your Price Each |
|--------------|-----------------|
| 19 789 01-S | \$79.95 |



FOR COURAGE SINGLE

Kit Contains: Air Cleaner, Pre-Cleaner, Oil Filter, Fuel Filter, Oil (2) and Spark Plug

| Order Number | Your Price Each |
|--------------|-----------------|
| 20 789 01-S | \$59.95 |



FOR COMMAND TWIN

Kit Contains: Air Cleaner, Pre-Cleaner, Oil Filter, Fuel Filter, Oil (2) and Spark Plug (2)

| Order Number | Your Price Each |
|--------------|-----------------|
| 24 789 01-S | \$64.95 |



FOR COMMAND PRO TWIN

Kit Contains: Air Cleaner, Pre-Cleaner, Oil Filter, Fuel Filter, Oil (3) and Spark Plugs (2)

| Order Number | Your Price Each |
|--------------|-----------------|
| 24 789 02-S | \$64.95 |



FOR HDCA

Kit Contains: Air Cleaner, Oil Filter, Fuel Filter, Oil (3) and Spark Plugs (2)

| Order Number | Your Price Each |
|--------------|-----------------|
| 25 789 01-S | \$69.95 |



FOR COMMAND PRO TWIN HDAC EFI MAINTENANCE

Kit Contains: Air Cleaner, Oil Filter, Fuel Filter, Oil (3)

| Order Number | Your Price Each |
|--------------|-----------------|
| 25 789 03-S | \$69.95 |



FOR COURAGE TWIN

Kit Contains: Air Cleaner, Pre-Cleaner, Oil Filter, Fuel Filter, Oil (2) and Spark Plugs (2)

| Order Number | Your Price Each |
|--------------|-----------------|
| 32 789 01-S | \$59.95 |



FOR 7000 SERIES

Kit Contains: Air Cleaner, Pre-Cleaner, Oil Filter, Fuel Filter, Oil (2) and Spark Plugs (2)

| Order Number | Your Price Each |
|--------------|-----------------|
| 32 789 02-S | \$59.95 |



FOR 7000 SERIES PRO

Kit Contains: Air Cleaner, Pre-Cleaner, Oil Filter, Fuel Filter, Oil (2) and Spark Plugs (2)

| Order Number | Your Price Each |
|--------------|-----------------|
| 32 789 03-S | \$59.95 |

KOHLER® PRO 300 HOUR OIL CHANGE KITS



Kohler PRO 10W-50 full synthetic oil and Kohler PRO extended life oil filters, when paired together, triple the oil change interval from 100 to 300 hours on Kohler gas engines.

- Reduces annual oil change costs by up to 50% and improves equipment up-time and productivity.
- Kohler PRO 10W-50 is engineered by Amsoil as a premium lubricant specifically for air-cooled engines.
- 10W-50 viscosity ensures all-season performance.
- Formulated for lower oil consumption than comparable conventional oil.
- Increased wear protection under extreme temperatures and operating conditions.
- Includes extra corrosion inhibitor for superior protection during seasonal storage.
- Kohler PRO Extended life oil filter features robust construction with premium media for extra capacity and superior filtration.

| Order Number | Engine Family | Models | Oil Filter + 10W-50 Oil | SALE PRICE |
|------------------|---|--|-------------------------|----------------|
| 25 850 01-S | Command Pro | CV173, CV200, CV224 | 1 Quart | \$39.95 |
| 25 850 02-S | 5400, 6600 & 7700 Series, 7500 Series EFI | KS530-595, KT610-620 KT715-745, EKT730-750 | 2 Quarts | \$59.95 |
| | Courage Single & Twin | SV470-620, SV710-740 | | |
| | Confindant Confindant EFI | ZT710-740, EZT725-750 | | |
| | Command, Command Pro Command Pro EFI | CV11-16, CV17-25, CV30-CV493, CH11-16, CH18-25, CH410-450 | | |
| | | CV620-752, ECV630-749 CH620-752, ECH630-749 | | |
| Aegis, Aegis EFI | LH690-775-ELH775 | | | |
| 25 850 03-S | Command PRO | CH/CV940-980 ECH/ECV940-980 | 3 Quarts | \$69.95 |

Call 800 305 9255 | Original & Aftermarket Parts



Original Equipment Air Filters

**Fits models
540000 & 610000
Engine series
2 1/2"IDx4 1/8"OD
x10 3/4"HT**



**Donaldson
Canister
Air Filter Special
841497 & 821136
For
\$45.89**

| Order Number | Your Price |
|----------------|----------------|
| 841497 | \$24.89 |
| 821136 (Inner) | \$23.49 |

**Fits ELS & Pro Series
engines. V-twin
16-27 HP engines**



| Order Number | Your Price |
|--------------|----------------|
| 792105 | \$20.99 |
| 792303 (Pre) | \$8.59 |

**Fits Model 44 & 49
Cyclonic Filter**



| Order Number | Your Price |
|--------------|----------------|
| 798897 | \$22.90 |
| 593217 (Pre) | \$6.29 |

**Fits V-Twin Vanguard,
29000, 303400,
400400**

5-5/8 x 7 x 2-1/4



| Order Number | Your Price |
|---------------|----------------|
| 394018S | \$13.99 |
| 272490S (Pre) | \$4.49 |

**Fits Single Cylinder
20-21 HP engines**



| Order Number | Your Price |
|--------------|----------------|
| 793569 | \$15.95 |
| 793685 (Pre) | \$4.79 |

**Fits 3/LC Filter,
Models 540000
& 610000 series**



| Order Number | Your Price |
|--------------|----------------|
| 820263 | \$22.99 |

**Fits V-Twin
Vanguard Engines**

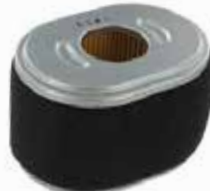
5-1/2 x 7-3/4 x 2-1/4in



| Order Number | Your Price |
|--------------|----------------|
| 692519 | \$18.99 |
| 692520 (Pre) | \$5.89 |

**Fits 9.5 Hp
Briggs Horizontal
engines**

Pre-filter Included



| Order Number | Your Price |
|--------------|----------------|
| 590601 | \$17.89 |

**Fits Vanguard
200 Series
Engines**



| Order Number | Your Price |
|--------------|----------------|
| 596760 | \$18.89 |

**Fits 125 Series
Engines**



| Order Number | Your Price |
|--------------|----------------|
| 595853 | \$10.95 |

MAINTENANCE KITS

| | Order Number | Description | Price |
|--|--------------|--|----------------|
| | 84004937 | For Vanguard V-Twin 12-21 HP Engines | \$59.95 |
| | 84002317 | Professional Series 24, 25 & 27 GHP V-Twin Engines | \$54.95 |
| | 84002316 | Commercial Series 20, 25 & 27 GHP V-Twin Engines | \$75.95 |
| | 84002318 | Vanguard 810cc V-Twin EFI, Oil Guard Engines, 37 HP Blig Block EFI Oil Guard Engines | \$99.95 |
| | 84002315 | 810cc V-Twin Non-Oil Guard Engines, 28, 31, 32, 35 & 37 HP EFI Non-Oil Guard Engines | \$79.95 |

VANGUARD™

COMMERCIAL POWER

BRIGGS & STRATTON



Briggs Oil Filter
For pressure Lubrication
& 3/LC gas engines
Order Number:
491056
Price . . . \$8.95 ea.
12 or more
PRICE . . . \$6.39 ea.



Briggs Oil Filter
Vanguard engines
5 - 14 HP, HT 2-1/4"
Order Number:
492932S
Price . . . \$8.39 ea.
12 or more
PRICE . . . \$6.89 ea.



Briggs Oil Filter
Oil filter for
ELS Engines
Order Number:
696854
Price . . . \$10.99 ea.
12 or more
PRICE . . . \$9.49 ea.



Briggs Oil Filter
Oil filter for Model 12
Professional series
Order Number:
795990
Price . . \$14.79 ea.
12 or more
PRICE . . \$13.79 ea.



Briggs Oil Filter
Oil filter for 3LC Engines
Order Number:
820314
Price . . . \$21.49 ea.
12 or more
PRICE . . \$18.49 ea.



Briggs Oil Filter
Oil filter for Vanguard
Engines
Order Number:
842921
Price . . . \$10.49 ea.
12 or more
PRICE . . . \$6.89 ea.



Briggs Oil
SAE 30 Oil
18 oz Bottle
Order Number:
100005
Price . . \$4.99 ea.



Vanguard Synthetic Oil
SAE 15W-50 Oil
32 oz Bottle
Order Number:
100405Q
Price . . \$7.80 ea.
12 or more
PRICE . . \$6.99 ea.



Vanguard Synthetic Oil
SAE 15W-50 Oil
5 qt. Bottle
Order Number:
100170
Price . . \$54.95 ea.
4 or more
PRICE . \$49.95 ea.



Briggs Oil
SAE 30 Oil
48 oz Bottle
Order Number:
100028
Price . . \$15.98 ea.



Briggs Synthetic Oil
SAE 5W-30 Oil
32 oz Bottle
Order Number:
100074
Price . . \$10.95 ea.



Oil Filter Wrench
Fits 2-1/2" to 4-1/2" Oil Filters,
20 Degree Jaw Angle.
Teeth provide non-slip grip
Order Number: 752-836
Price: \$29.89

Order Number
9359
Price: \$69.95



Hour Meter

Tach/Hour Meter. Records actual running of engine. Non-Erasable. Shows Engines RPMs (Read up to 9,000 RPMs). Alerts you to lube (Grease) & Change Oil (25 Hour Intervals). No battery required, Triggered from the Spark Plug Wire. CE Certified.

Call 800 305 9255 | Original & Aftermarket Parts

Mechanics 1st Choice

REPAIR SHOP TOOLS



Safety Seal Slim Refill Tire Repair

Self vulcanizing, easy to use tubeless tire repair system. Comes with insertion tool, spreader probe, lube, spare needle, allen wrench, blades and seal cords.

Order Number: 8081

Price: \$125.00



Stop & Go Tire Repair Kit

Stop & Go Tire Repair Kit, # 1085 Deluxe Model Tire Plugger contains, Spring Loaded Plug Gun, Nozzle & Probe Tool, Tire Reaming Tool, Retractable Razor Knife, (15) 3/4"x 5/16" Mushroom Shaped Plugs.

Order Number: 15929

Price: \$71.75



Stop & Go Tire Repair Plugs

Stop & Go tire repair plugs 50 pack, 3/4" x 5/16" mushroom shaped plugs used with our 15929 tire plugger.

Order Number: 15971

Price: \$20.95



Emergency Cable Repair Kit

Helix Emergency Cable Repair Kit. Two cable wire diameter sizes (.047" and .055) each 6.5 feet long and an assortment of cable ends for throttle, brakes and clutch. Small and compact to be carried on equipment.

Order Number: 16598

Price: \$19.25



Utility Tire Air Powered Bead Expander

Ken Tool Utility Tire Air Powered Bead Expander helps seat beads on hard to seat tubeless lawn and garden tires. Fits 10"- 22" diameter tires.

Order Number: 15972

Price: \$235.00



Utility Air Powered Bead Expander

Ken Tool Utility tire air powered bead expander helps to seat beads on hard to seat tubeless lawn and garden tires. Fits 14" to 26" diameter tires.

Order Number: 16066

Price: \$250.00



Tire Changer

For lug-center or bearing-in hub wheels. Designed for 4" to 12" tires. Any wheel is secured onto the non-skid base plate by simply positioning and tightening the "quick adjust" center post onto the threaded rod. This unique design allows the operator to change small tires and switch wheel sizes or styles very quickly.

Order Number: 67-214

Price: \$349.95



Bead Seater

The Oregon® bead seater tire inflator has a "fire hose" type release valve and an attached air hose for use as an air bubble.

Order Number: 67-221

Price: \$316.20

Mechanics 1st Choice

REPAIR SHOP TOOLS



Ignition Spark Tester

Checks the integrity of the Electrical Ignition & Magneto/Coil Ignition Systems of Lawnmowers, Boat Motors, Motorcycles. The tester checks both current & voltage & will indicate fouled electrodes.

Order Number: 7731

Price: \$13.15



Adjustable Ignition Spark Tester

Tests for no start conditions and for Spark Strength. Adjustable gap allows for different Spark Gap requirements of different systems from 0 to 40,000 Volts. Gauge background makes spark easy to see for accurate measurement. Alligator Clip securely fastens to ground.

Order Number: 9773

Price: \$34.25



Circuit Tester

Circuit tester checks all 6 and 12 volts systems. Locates shorts, grounds and open circuits. Made in the USA

Order Number: 9835

Price: \$19.95



Ignition & Spark Tester

Spark Tester. Plug in between the coil and spark plug. Lights up when spark is present.

Order Number: 9099

Price: \$19.00



Wireless Tachometer

Accurately Reads R.P.M. in all 2 & 4 Cycle Single Cylinder Engines. 0 to 15,000 R.P.M. Scales. Solid State. Uses 9 Volt BATTERY, NOT INCLUDED. Model No. 1082 Dixon

Order Number: 9073

Price: \$154.00



Charging System Tester

Checks Battery Condition & Starting as well as Charging System. Both 6 & 12 Volt. Full Instructions. Model #1092 Dixon.

Order Number: 9074

Price: \$77.89



Digital Engine Tachometer

Different settings to measure RPM on 2 stroke and 4 stroke engines. Can be used wireless (pulse activation) or wired by using clip on lead provided. Measures RPM from 100 to 19,000 with +/- 10 RPM accuracy level. 0.5 second reframe rate. Similar to PET-1000R & Echo 99051130017

Order Number: 15344

Price: \$89.95



Spark Plug Gap Gauge

With electrode adjusting tools, Thousand & Metric equivalents

Order Number: 1707

Price: \$5.25



Ammeter

Universal-Mounts easily with 2 nuts provided.

Order Number: 9019

Price: \$16.59

Call 800 305 9255 | Original & Aftermarket Parts

Mechanics 1st Choice

REPAIR SHOP TOOLS

14 to 18mm



Spark Plug Thread Chaser

Renews damaged threads. Removes Carbon & Corrosion with a few turns. Allows Firm Seating of Plugs. Assures Metal to Metal Contact for Effective Heat Transfer.

Order Number. 5827

Price: \$19.00

10 to 14mm



Spark Plug Thread Chaser

Renews damaged threads. Removes Carbon & Corrosion with a few turns. Neoprene ring holds chaser snugly in socket.

Order Number. 9031

Price: \$20.00

2" to 4" Capacity



Ring Expander

For installing & removing Piston Rings, from 2" TO 4" capacity, without the danger of breakage or distortion. All rings expanded whether Step-Cut or Diagonal Cut.

Order Number. 9052

Price: \$25.50



Ring Compressor

Piston ring compressor is adaptable to all types of rings. Oregon replacement parts are built to meet or exceed OEM standards. Capacity: 1-3/4" to 3-1/2"

Order Number. 1749

Price: \$19.95



Small Engine Hone

Fits cylinders with 1-1/2" to 3" diameter. Easy adjustments to any small engine application. Complete with Stone - Plated.

Order Number. 1704

Price: \$35.50



Replacement Stones

Replacement stones for 1704 Cylinder Hone. 2" Length x 5/16" width. Set of three

Order Number. 1705

Price: \$16.00



Carburetor Jet Cleaning Tool

Helix Carburetor Jet Cleaning Tool, to clean clogged jets and passageways inside the carburetor. Kit has ten wire sizes to cover the most common jet sizes, come in Helix storage case.

Order Number. 16597

Price: \$26.39



Roller Chain Breaker

Lightweight roller chain breaker for use on sizes 1/4" - 3/4" pitch chain. Will work on sizes 35, 40, 41, 42, 43, 50 and 60 chain. Made in the USA.

Order Number. 15797

Price: \$29.99



Piston Ring Assembly Tool For Husqvarna

Piston Ring Assembly Tool Kit. Replaces Husqvarna 502 50 70-01. Useful for assembling pistons and cylinders on chainsaws. 4 Sizes of clamps. Give yourself a third hand with this kit. This kit will compress piston rings ranging from 30mm to 60mm in diameter. Includes a piston support block and piston stop.

Order Number. 14626

Price: \$14.00

Mechanics 1st Choice

REPAIR SHOP TOOLS



Valve Spring Compressor

Exclusive Valve Lifter frees both hands. Exclusive Lift Wedge eliminates use of screwdrivers and lets you get under the Retainer Cap with ease. Rugged all steel construction. Fits all cycle engines.

Order Number. 9252

Price: \$55.15

Small Replacement Jaw Fits 9252

Order Number. 9253

Price: \$11.50

Large Replacement Jaw Fits 9252

Order Number. 9254

Price: \$11.50



Valve Spring Compressor

For removing & replacing Valve Springs of Briggs & Stratton Engines

Order Number. 9054

Price: \$49.00



FlyWheel Puller

Genuine Briggs & Stratton replacement Puller Flywheel. Size: Large, Hole Distance 2-13/16" or 2.820 (71.4375 mm)

Order Number. 19203

Price: \$20.89



Hose Pinch Tool

Helix Tubing Clamp/Hose Pinchers. A quick and easy way to pinch off fuel line without damaging the line. Nickel plated. Sold in pairs. Fuel line and filter not included.

Order Number. 14859

Price: \$13.89



Crankcase Pressure Gauge

Leak Detector, Pop-Off Gauge Fuel Pressure Gauge (15 PSI)

Order Number. 11321

Price: \$86.25

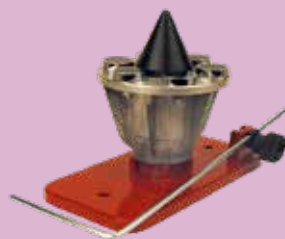


MAGNA-MATIC Blade Balancer

Blade Balancer made of the finest steel with sealed bearings for precision balancing and strong magnets to hold a blade while balancing. This is an American made Magna Matic MAG-1000 Balancer.

Order Number. 9788

Price: \$345.00



Tecomec Magnetic Blade Balancer

Tecomec Magnetic Wall Mount Blade Balancer. 6 Magnets allow better stability. Imported.

Order Number. 13216

Price: \$149.00

Spark Plug Wrench



Order Number. 1291
Price \$3.29

Fits: 3/4-inch Short Plug & 13/16-inch Regular Plug.
14mm Wrench
Includes L bent rod to turn Wrench.
Fits most common Small engine Spark Plugs

Mower Deck Leveler



Order Number. 42-095
Price \$12.49

Oregon Deck Leveler
Accurately measures height of deck from ground on all sides. Place gauge on Flat concrete floor for best results. Measure 4 corners of deck. Make adjustments to deck hanging chains or rods.

Visit us at propartsdirect.net to learn on how you can become a small engine repair shop account. Enjoy repair shop discounts and specials. If you are tax exempt we can do that to!

Call 800 305 9255 | Original & Aftermarket Parts

Mechanics 1st Choice

REPAIR SHOP TOOLS

Service Repair Tags



Made of durable material, with reinforced eyelets. Will help organize information, minimize errors & alert personnel to special instructions. (100 per pack) Wire attached.
 SIZE 3-1/4" X 6-1/4"

Order Number: 9087

Price: \$0.49 ea.

Weather Resistant Service Maintenance Tag



Service Maintenance Tag made of durable weather resistant material. Will help record maintenance information. Can be attached to seat base for future reference. Package contains 50 tags (3-1/8"x 6-1/4") and 50 beaded ball type security ties. Priced individually, order in multiples of 50. Min 50

Order Number: 16480

Price: \$0.85 ea.



Service Parts Bags

Service Parts Bag, Measures 8-3/8"X 12, Writing area of 5"X 1-1/2" & has a hole for hanging. NOT A ZIP-LOCK BAG

Order Number: 7256

Price: \$0.40 ea.



Belt Measurer

Belt Measurer. Measures 3/8, 1/2, & 5/8. Fractional Horse-Power Belts as well as A & B Section Industrial Belts up to 110.

Order Number: 9108

Price: \$56.50

Belt Gauge Extender

Belt Gauge Extender. Fits Rotary 9108 Belt Measuring Gauge. Adds 40" length capacity to our current 110" gauge.



Order Number: 16263

Price: \$121.00



JB Weld Compound

Repairs, Fills, & Bonds: Iron, Steel, Copper, Aluminum, Brass, Bronze, Pewter, Wood, Porcelain, Ceramic & Plastic.

Order Number: 9077

Price: \$11.00



HV-350 Compound

Due to its tremendous elasticity, HV-350 is ideal for high-vibration applications. HV-350 can be stretched up to 600 percent of its original length. Works Great on Plastic

YouTube

Order Number: 710XX155

Price: \$13.99

Contact Us for
Stinger Parts!

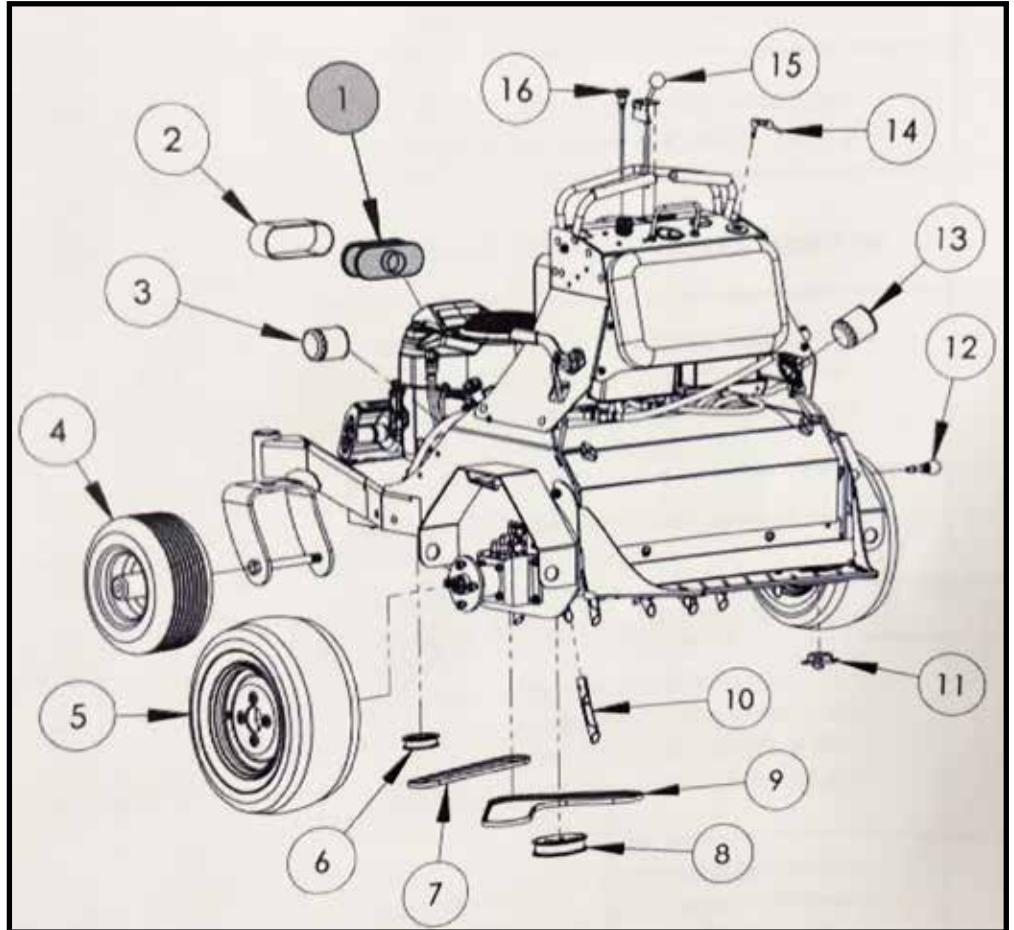
STINGER
EQUIPMENT



QA-3000SB/ST FAST Moving Parts



Some Fantastic edges being
laid down by our guy
Raduant Pastures. Follow
his instagram
[@ceo_of_radiant_pastures](#)



| Order Number | Description | Price | Order Number | Description | Price | | |
|--------------|------------------------|---------------------|--------------|-------------|------------|------------------|---------|
| 1 | 11029-0031 | Kawasaki Air Filter | \$17.80 | 9 | 40-2372ST | Drive Belt | \$25.00 |
| 2 | Included W/ 11029-0031 | Pre-Filter | | 10 | 10-0260ST | Ride on Tine | \$7.56 |
| 3 | 49065-0721 | Kawasaki Oil Filter | \$9.49 | 11 | 50-1805ST | Foot Switch | \$37.50 |
| 4 | 40-0427ST | Caster Tire | \$95.00 | 12 | 10-1657ST | Plunger | \$36.50 |
| 5 | 40-2036ST | Drive Tire | \$145.00 | 13 | 40-1807ST | Hydro Oil Filter | \$16.00 |
| 6 | 40-0869ST | 3" Flat Idler | \$21.50 | 14 | 50-1803KST | Set of Keys | \$11.00 |
| 7 | 40-2452ST | AX34 | \$25.00 | 15 | 40-1608ST | Throttle Cable | \$45.50 |
| 8 | 40-1612ST | Large Flat Idler | \$53.00 | 16 | 40-1607ST | Choke Cable | \$38.00 |

Call 800 305 9255 | Original & Aftermarket Parts



• Consistent hub height helps ensure the mower deck produces an even cut.

• Excellent lateral stability on hill sides and sloped surfaces, and outstanding operator comfort, even when navigating over curbs and other bumps.

• High performance compounds and an efficient contact patch designed to provide a longer life that is 2-3 times that of a pneumatic tire at equal tread depth.



TWEEL Tires are the newest, hottest thing in the lawn industry. That being said, Michelin® is still learning what tires fit what machine. **Contact us with your model number** to make sure you have the right fit. New machines are being added monthly.



| Popular Tweel Tires | Size | Fitment | Price |
|---------------------|----------------|---|----------|
| 01133 | 18 x 8.5 x 10 | Toro Proline, Grandstand Revolution, Walker S18, S14, C19I, C23I, B18, B19, Wright Stander B, I, Velke | \$595.00 |
| 77185 | 24 x 12 x 12 | Cub Pro Z, Dixie Chopper, Bobcat, Husq M-ZT & Z460, Scag V-Ride II, Patriot, Tiger Cat II, Toro Grandstand, Toro 2000 series & 4000 Series, Redmax, John Deere | \$820.00 |
| 41011 | 13 x 6.5 x 6 | Altoz, Bad Boy, Country Clipper, Husq, John Deere, Kubota, Men Green, Scag, Spartan, Toro, Wright | \$239.95 |
| 08189 | 26x12x12 | Bobcat Pro7000, Cub Cadet Pro Z, Dixie Chopper Eagle, John Deere Z-Trak, Scag Turf Tiger II | \$929.00 |
| 25913 | 26x12x12 | Bad Boy Renegade & Rogue, Country Clipper Boss XL, Exmark Lazer Z Diesel, Ferris F3202 & ISX3000, Gravely Pro-Turn 500 & 600, Hustler Super SF, Kubota ZD1200, Stihl RZ 900, Wright XL, Yakta YXR | \$943.00 |
| 47260 | 22x11x12 | Cub Cadet Ultima, Dewalt Z, Ferris ProCut S, Grasshopper Front Mount 700, Stihl RZ500, Ventrac, Wordlawn | \$779.00 |
| 38182 | Caster Bushing | 1/2" Axle Bolt Diameter, 5/8 Bushing Width, 5-5/8" Inside Fork Width 11" Caster | \$32.98 |
| 40653 | Caster Bushing | 1/2" Axle Bolt Diameter, 1" Bushing Width, 6-3/8" Inside Fork Width 11" Caster | \$32.98 |
| 34193 | Caster Bushing | 5/8" Axle Bolt Diameter, 5/8" Bushing Width, 5-5/8" Inside Fork Width 11" Caster | \$31.90 |
| 65019 | Caster Bushing | 3/4" Axle Bolt Diameter, 1" Bushing Width, 6-3/8 Inside Fork Width 11" Caster | \$31.18 |

TWEEL Tires Fit these major Brands: Altoz, Ariens, Bad Boy, Big Dog, Bobcat, Country Clipper, Cub Cadet, Dewalt, Dixie Chopper, Ego, Exmark, Ferris, Grasshopper, Gravely, Greenworks, Hustler, Husqvarna, John Deere, Kubota, Redmax, Scag, Spartan, Stihl, Toro, Ventrac, Walker and Wright.

OEM BRANDED TWEELS

| Exmark OEM TWEEL | | | | Order Number | Price | Rear Tire Size | | |
|------------------|---------|---|----|--------------|----------|----------------|--|--|
| Tractus | Lazer Z | 4 | 60 | 135-2286 | \$889.95 | 24x12x12 | | |
| Tractus | Lazer Z | 4 | 72 | 135-2287 | \$889.95 | 26x12x12 | | |

| Toro OEM TWEEL | | | | Order Number | Price | Rear Tire Size | | |
|----------------|-------------------------|---|--|--------------|----------|----------------|--|--|
| X-Tweel | Titan HD, Z 2000 | 4 | | 139-3649 | \$789.99 | 24x12x12 | | |
| X-Tweel | GrandStand | 4 | | 139-7890 | \$565.99 | 18x8.5x10 | | |
| X-Tweel | Certain Z Master Models | 4 | | 139-7891 | \$797.99 | 24x12x12 | | |

| Wright | | | | Front Caster (Spacer) | Price | Rear Tire Size | Rear Tire | Price |
|---------------|-----|---|----|-----------------------|----------|----------------|-----------|----------|
| Wright Mowers | MMZ | 5 | 52 | 52441 (Spacer 65019) | \$249.95 | N/A | N/A | |
| Wright Mowers | MMZ | 5 | 61 | 52441 (Spacer 65019) | \$249.95 | 24x12x12 | 54411 | \$899.95 |
| Wright Mowers | ZTO | 5 | 52 | N/A | | 24x12x12 | 54411 | \$899.95 |
| Wright Mowers | ZTO | 5 | 61 | N/A | | 24x12x12 | 54411 | \$899.95 |

42 **Order Online www.propartsdirect.net | Original & Aftermarket Parts**

Carlisle Tires

TURF MASTER



| Size | Order Number | PLY | Price |
|-----------------|--------------|-----|----------|
| 13 x 6.50 - 6 | 5112491 | 4 | \$46.95 |
| 15 x 6.00 - 6 | 5112521 | 4 | \$52.95 |
| 16 x 6.50 - 8 | 5114011 | 4 | \$68.89 |
| 16 x 7.50 - 8 | 5114021 | 4 | \$74.89 |
| 18 x 6.50 - 8 | 5114171 | 4 | \$84.95 |
| 18 x 8.50 - 8 | 5114041 | 4 | \$88.59 |
| 20 x 8 - 10 | 5114281 | 4 | \$92.95 |
| 20 x 10 - 8 | 5114051 | 4 | \$129.95 |
| 20 x 10 - 10 | 5114161 | 4 | \$129.95 |
| 23 x 9.50 - 12 | 6L08381 | 4 | \$159.95 |
| 23 x 10.50 - 12 | 5114081 | 4 | \$159.95 |
| 24 x 9.50 - 12 | 511434 | 4 | \$159.95 |
| 24 x 12 - 12 | 5114091 | 4 | \$178.88 |

TURF-SAVER



| Size | Order Number | PLY | Price |
|--------------|--------------|-----|----------|
| 11 x 4.00-5 | 5110101 | 2 | \$29.88 |
| 13 x 5.00-6 | 5110211 | 4 | \$34.95 |
| 13 x 6.50-6 | 5111861 | 4 | \$42.95 |
| 15 x 6.00-6 | 5110301 | 2 | \$34.95 |
| 16 x 6.50-8 | 5110961 | 4 | \$44.88 |
| 18 x 6.50-8 | 5110991 | 2 | \$56.95 |
| 18 x 8.50-8 | 5110711 | 4 | \$76.88 |
| 18 x 9.50-8 | 6L05011 | 4 | \$105.75 |
| 20 x 8.00-8 | 5110801 | 2 | \$79.95 |
| 20 x 10.00-8 | 5111011 | 2 | \$98.49 |

SMOOTH



| Size | Order # | PLY | Price |
|----------|---------|-----|---------|
| 8x350-4 | 5120081 | 4 | \$22.95 |
| 9x350-4 | 5120101 | 4 | \$28.95 |
| 11x400-5 | 5120111 | 4 | \$36.88 |
| 13x500-6 | 5120211 | 4 | \$45.88 |
| 13x650-6 | 5121861 | 4 | \$44.95 |

RIB



| Size | Order # | PLY | Price |
|-----------|---------|-----|---------|
| 13x5.00-6 | 5180211 | 4 | \$32.95 |
| 13x6.50-6 | 5181861 | 4 | \$38.88 |
| 15x6.00-6 | 5180311 | 4 | \$37.88 |
| 16x6.50-8 | 5180961 | 4 | \$64.88 |

TUBES



| Size | Order # | Price |
|----------------|---------|---------|
| 13 x 500 | 71-096 | \$10.85 |
| 15 x 600 | 71-102 | \$11.97 |
| 410 / 350 | 71-610 | \$8.45 |
| 18 x 850 / 950 | 71-104 | \$23.83 |
| 20 x 800 | 71-004 | \$24.30 |
| 16 x 650 | 71-816 | \$14.85 |
| 20 x 10.00 | 71-100 | \$31.25 |
| 23 x 1050 | 71-408 | \$23.95 |
| 480/400/8 | 71-800 | \$9.10 |
| 20x10x8 | 71-407 | \$20.49 |
| 16x650x8 | 71-406 | \$23.73 |
| 26x12x12 | 71-283 | \$49.23 |
| 22X11X8 | 71-098 | \$43.85 |
| 11x4x5 | 71-403 | \$7.07 |

MULTI TRAC



| Size | Order # | PLY | Price |
|-------------|---------|-----|----------|
| 18x8.50x10 | 5743U11 | 4 | \$79.95 |
| 18x10.50-10 | 5743E51 | 4 | \$138.88 |
| 24x9.50-12 | 574338 | 4 | \$149.95 |
| 26x12.00-12 | 5743611 | 4 | \$189.95 |
| 23x9.50-12 | 574329 | 4 | \$159.95 |

OTR GRASSMASTER



| Size | Order # | PLY | Price |
|------------|----------|-----|----------|
| 18x850x10 | 6GM454 | 4 | \$99.95 |
| 23x1050-12 | 6GM814 | 4 | \$199.88 |
| 24x12x12 | 6GM874TL | 4 | \$214.95 |
| 25x12x12 | 6GM934 | 4 | \$229.88 |

BUY NOW & PAY LATER
 PROPARTS DIRECT GIVES YOU THE OPTION TO BUY THE PARTS YOU NEED NOW AND PAY OVER TIME WITH AFFIRM. CHOOSE AFFIRM AT CHECKOUT TO APPLY FOR FIXED MONTHLY PAYMENT OPTIONS THAT FIT ANY BUDGET.
*SUBJECT TO ELIGIBILITY. PAYMENT OPTIONS THROUGH AFFIRM ARE PROVIDED BY THESE LENDING PARTNERS: AFFIRM.COM/LENDERS.

Walker Carlisle Tires

5743U1 5743E51 5120211



| Size | Order # | PLY | Price |
|-----------------|---------|-----|----------|
| 18 x 8.50 x 10 | 5743U1 | 4 | \$98.88 |
| 18 x 10.50 x 10 | 5743E51 | 4 | \$138.88 |
| 13 x 500 x 6 | 5120211 | 4 | \$45.88 |



5715-17



5715-18

| Order Number | Description | Price |
|--------------|---------------------------------------|----------|
| 5715-24 | 8 x 300 x 4 Tire / Rim Pneumatic Tire | \$123.42 |
| 5715-23 | Flat Free Version of 5715-17 | \$124.73 |
| 72-756 | Replaces 5715-18, 5715-23 | \$89.95 |
| 5714-3 | Sleeve 9 Inner | \$11.57 |

Call 800 305 9255 | Original & Aftermarket Parts

eXmark OEM Parts

TRACTUS AIRLESS TIRES



| Deck Width | Order Number | Price |
|------------|--------------|----------|
| 60 | 135-2286 | \$889.95 |
| 72 | 135-2287 | \$889.95 |



Anti-Scalp Wheel

Used on Exmark /
Toro Commercial Riders
Wheel Size: 5x2 3/4,
Hub: 2 1/2" offset, Bore: 5/8

Order Number 1-603299

Price: \$19.99

2 Or More
\$17.99 ea.



Anti-Scalp Wheel

Alternative Part "Wheel Kit".
Includes: Wheel, Bolts, Spacer,
Washer & Nut.

Order Number 10301

Price: \$14.88

2 Or More
\$13.00 ea.

Exmark Catcher Parts



Rubber Hood Latch

Used on 44 / 48 / 52 Baggers

Order Number 1-653403

Price: \$70.99



Rubber Tube Seal

Used on 44 / 48 / 52 Baggers

Order Number 1-653561

Price: \$16.99



Plastic Hood Catch

Used on 44 / 48 / 52 Baggers

Order Number 1-653404

Price: \$32.99



Exmark Red Paint

12 oz. Can

Used on All Exmark Equipment

Order Number: 1-850337

Price: \$26.99

2 or more \$20.99

OEM Ultra-Vac Replacement Bags

Replacement bags with hard bottom. Does not include handle or frame

44 / 48 / 52" Bag

60" to 72" Bag



2 or
more
\$77.00 ea.

Order Number : 116-3518
\$79.89 ea.



2 or
more
\$70.95 ea.

Order Number : 116-0757
\$74.95 ea.

Exmark Jack Mount

Exmark Jack Mour
Receiver 127-666E
Lazer Z E, Lazer Z
and Lazer Z

X and allows safe
access to the
underside of your zero-turn
mower's deck. Used in conjunction
with Exmark's Bulldog jack 127-6666.
Attaches easily for smooth lift without
hassle or strain, thanks to its comfort-
able, ergonomic design



Order Number : 146-0696
\$99.99 ea.

Motion Control Dampener

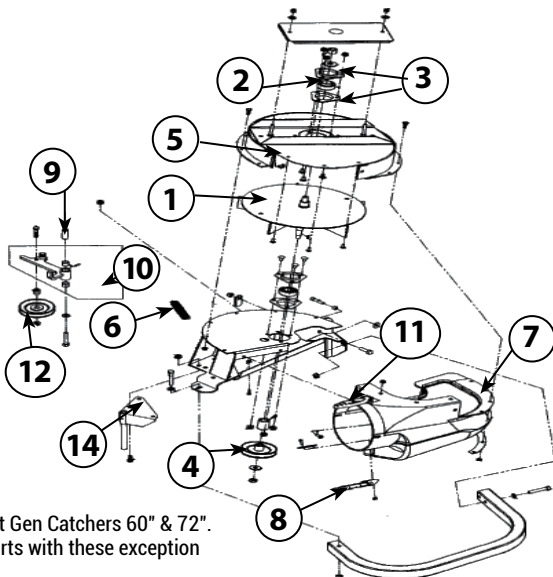
Used on Exmark / Toro Commercial Riders
Was part number 142-8117

Order Number 146-0859

Price: \$43.99



Exmark 60" & 72" Ultra-Vac Parts



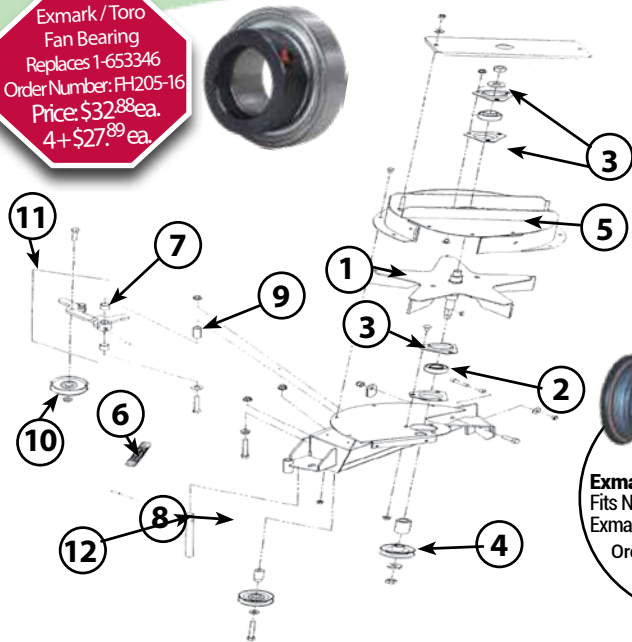
Newer Style Next Gen Catchers 60" & 72".
Use the same parts with these exception

| | | | |
|----|---------------------|----------|----------|
| 7 | Chute Blower | 109-2954 | \$263.99 |
| 8 | Latch Grass catcher | 103-2898 | \$29.99 |
| 14 | Wld, Mount Pin | 1-353050 | \$14.99 |

Ultra Vac Blower Assembly

| # | Description | Order # | Price |
|----|---|-------------|------------------------------------|
| 1 | Wld, Impeller | 103-0455 | \$386.99 |
| 2 | Bearing, SPH. OD (2) | FH205-16 | \$32.88 (2 for \$27.89 ea.) |
| 3 | Housing, Flange (4) | 1-513013 | \$4.49 |
| 4 | Sheave, Blower | 103-0456 | \$46.49 |
| 5 | Wld, Upper Housing | 103-3593 | \$476.99 |
| 6 | Spring, Idler | 1-653331 | \$10.99 |
| 7 | Chute, Blower | 103-4759 | \$339.99 |
| 8 | Latch, Grass Catcher | 1-353054 | \$6.69 |
| 9 | Bushing, Idler Pivot | 1-603044 | \$12.99 |
| 10 | Assembly, Idler with Bushings, Zerk & decals | 103-0448 | \$135.99 |
| 11 | Latch, Rubber | 103-2898 | \$29.99 |
| 12 | Pulley, Idler | 103-0483 | \$46.49 |
| 13 | Bearing | 1-653600 | \$17.99 |
| 14 | Wld, Mount Pin | 103-0445-03 | \$63.99 |

Exmark / Toro
Fan Bearing
Replaces 1-653346
Order Number: FH205-16
Price: \$32.⁸⁸ea.
4+ \$27.⁸⁹ea.



Exmark / Toro Hydro Filter
Fits Newer Toro Riders,
Exmark Next Gen Series.
Order Number 117 0390
\$49.99

| 44" - 48" - 52" Ultra Vac LHP Blower Assembly | | | |
|---|---|----------|----------|
| # | Description | Order # | Price |
| 1 | Wld, Impeller | 103-3815 | \$369.95 |
| 2 | Bearing, SPH. OD (2) | 1-653346 | \$61.99 |
| 3 | Housing, Flange* (4) | 1-513013 | \$4.49 |
| 4 | Sheave, Blower* | 103-1047 | \$66.99 |
| 5 | Wld, Upper Housing | 103-3589 | \$594.99 |
| 6 | Spring, Idler | 1-653331 | \$10.99 |
| 7 | Bearing (2) | 1-653600 | \$17.99 |
| 8 | Pulley, Idler | 1-653322 | \$56.49 |
| 9 | Bushing, Idler Pivot | 103-0130 | \$15.97 |
| 10 | Pulley, Idler | 103-1103 | \$60.49 |
| 11 | Assembly, Idler W./ Bushings, Zerk & Decal | 103-2876 | \$144.99 |
| 12 | Pin, Grass Catcher | 1-353050 | \$14.99 |

*Apply Mobil HTS grease (or a food-grade anti-seize) on bore of sheave and bearings

Exmark Hydro Oil
Specially designed oil for extreme mowing conditions. Field tested & proven formula offers maximum protection in all conditions.



1 Quart Bottle
Order Number: 109 9828
Price . . . \$17.89
12 or more \$15.89 ea.

1 Gallon Bottle
Order Number:
116 1218
Price . . . \$52.99



Exmark OEM Oil
10W-50 Syn 1 Quart Bottle
Order Number: 126-4143
Price . . . \$12.59 ea.
12 or more \$11.99 ea.



20W-50 Syn 1 Quart Bottle
Order Number: 135 3949
Price . . . \$16.88 ea.
12 or more \$15.89 ea.



30/10W-50 Syn 1 Quart Bottle
Order Number: 126-4143
Price . . . \$12.59 ea.
12 or more \$11.99 ea.

Exmark Ultra-Vac Belts

109-9249

| Order Number | Fits | Price | 2 or More |
|--------------|---------------|---------|-----------|
| 1-653332-SL | 44" Ultra-Vac | \$25.99 | |
| 1-653333-SL | 48" Ultra-Vac | \$28.99 | |
| 103-0866-SL | 50" Ultra-Vac | \$29.95 | \$28.95 |
| 1-653438-SL | 52" Ultra-Vac | \$30.99 | \$28.99 |
| 109-9249-SL | 56" Ultra-Vac | \$35.99 | \$34.95 |
| 103-0866-SL | 60" Ultra-Vac | \$29.95 | \$28.95 |
| 103-0867-SL | 72" Ultra-Vac | \$33.99 | \$30.99 |

Ultra-Vac Assemblies

| Order Number | Description | Sale Price |
|--------------|---|------------|
| 103-0401 | 44-48" Ultra Vac | \$1,549.99 |
| 103-0400 | 52" Ultra Vac | \$1,400.00 |
| 109-1128 | 60" Triton Deck Vac | \$1,774.99 |
| 103-2991 | 60" - 72" Ultra Cut Series Vac (Series 2) | \$1,525.99 |
| 109-9832 | 48" - 52" Ultra Cut Series Vac (Series 4-6) | \$1,699.95 |
| 109-9836 | 60" - 72" Ultra Cut Series Vac (Series 4-6) | \$1,549.99 |

Call 800 305 9255 | Original & Aftermarket Parts



WALKER

Original Walker Mower Parts

Don't See the Walker part you need? Call us at 800 305 9255.

Blower Parts

| | Order Number | Description | Price |
|--|--------------|---|----------|
| | 7543-0 | 10.5 Blower Assembly W/O Tube Replaces 7543 | \$573.86 |
| | 7526 | 10.5 Blower Tube Order with 7543-0 if Needed | \$52.82 |
| | 7544 | 10.5 Blower Assembly | \$583.39 |
| | 5542-3 | 9 Blower Assembly | \$530.04 |
| | 6542-0 | Blower Assembly | \$526.56 |
| | 7545 | 10.5 Blower Wheel | \$132.00 |
| | 6545 | 10 Blower Wheel | \$143.00 |
| | 5515-2 | Elbow Delivery Spout | \$71.55 |
| | 7239-1 | Blower Pulley (Micro V) | \$46.68 |
| | 5268 | Bearing W | \$32.95 |
| | 8960-15 | Ignition Switch W/ Key | \$31.47 |

2 Or More
\$28.00 ea.

Discharge Chutes

| | Order Number | Description | Price |
|--|--------------|---|----------|
| | 5794-3 | 42" Deck Discharge Chute W/Spring Mount | \$93.26 |
| | 8511-1 | 9.5 Delivery Chute w/ Clips | \$55.81 |
| | 7794-1 | 48" Deck Discharge Chute W/ Spring Mount | \$113.76 |
| | 5794-1 | 36" Deck Reverse Rotation Collection W/ Spring Mount | \$104.49 |
| | 5794-11 | MC23i Discharge Chute w/ Spring Mount | \$132.68 |

Hydrostatic Drive Parts



| | Order Number | Description | Price |
|--|--------------|-----------------------------------|-----------|
| | 6243-2 | Hydro Fan, CCW (Used with 5025) | \$6.49 |
| | 5025 | Hydrostatic Drive, CCW (700-052) | \$1199.95 |
| | 6243-1 | Hydro Fan, CW (Used with 5026) | \$6.49 |
| | 5026 | Hydro Static Drive, CW (700-051) | \$1199.95 |
| | 6233-1 | Pinion Gear | \$46.42 |
| | 7244 | Hydro Pulley | \$51.54 |

Fuel Tank



New Style Fuel Tank Kit
With Evap Control 4.7 Gallon
Includes Fuel Filter, In Tank
Replaces Walker 8046-3,
8046-9 Tanks

Order Number 8055-1 Price \$213.63

Remote Pre-Cleaner
Fits All Walkers



Order Number 7026-3 Price \$68.28

Blower Drive Belts



| Order Number | Description | Serial Number Range | Price |
|--------------|---------------------------|-----------------------|---------|
| 8230 | Engine To PTO Belt | 92-12717 and on | \$41.85 |
| 7248 | Ground Drive Belt Micro V | 96-24752 and on | \$14.68 |
| 7235 | Ground Drive Belt | 92-12717 to 96-24751 | \$23.16 |
| 7234-2 | Blower Belt Micro V | 07-89388 and on | \$17.55 |
| 7234-1 | Blower Belt | 01-52900 to 07-89387 | \$16.89 |
| 7234 | Blower Belt (3VX280) | 92-12717 to 01-52899 | \$10.78 |
| 6250-1 | Drive Belt (3VX370) | 14-124884 and on | \$14.98 |
| 6250 | Drive Belt (3VX375) | 02-57832 to 14-124883 | \$15.19 |
| 6231 | Drive Belt (3VX355) | 92-12717 to 02-57831 | \$11.95 |

Deck & Catcher Parts

| Order Number | Description | Price |
|--------------|-----------------------------------|----------|
| 5155-4 | Gas Spring (10.0 Bushel Catcher) | \$19.97 |
| 5162-12 | Roller Wheel 5" Poly | \$1.79 |
| 5162 | Rubber Roller Wheel | \$12.18 |
| 7775-2 | Hitch Pin / RH gold (#6) | \$4.23 |
| 7775-1 | Hitch Pin / LH Silver (#6) | \$4.02 |
| 5052-1 | LH Rotation (Aluminum Gearbox) | \$259.98 |
| 5029-14 | Oil Seal, Gear Box (P007) | \$6.52 |
| 5740-2 | Deck Pin Bushing 5/8 | \$2.68 |



CASTER FORK CAPS

Fits All Walker Mowers. Order Number Price
Replaces Walker 8769-9 8769-10 \$8.51 Each

ROTARY BROOM 47 INCH



| Order Number | Description | Each |
|--------------|--------------------------------|----------|
| I370 | Wafer Brush Poly 18 Need 24 | \$40.51 |
| I370-1 | Wafer Brush Steel Need 24 | \$44.46 |
| I362 | 100% Poly Broom Set 18" | \$699.78 |
| I362-2 | Brush Support | \$227.46 |

Walker Mower Paint

Walker Gloss Yellow
Used on all Walker
Equipment
12 oz Can

Order Number: 5866
Price : \$25.95



Walker Engine Oil

15W-50 Mobil One Oil
Synthetic Oil, 1 Qt

Order Number: 122377
Price : \$16.88



Walker Gearbox Lube

Walker Hydro Gear Oil SHC 630

Order Number: 6450-21
Price : \$24.38

5 Gallon Pail
Order Number: 110843
Price : \$349.00



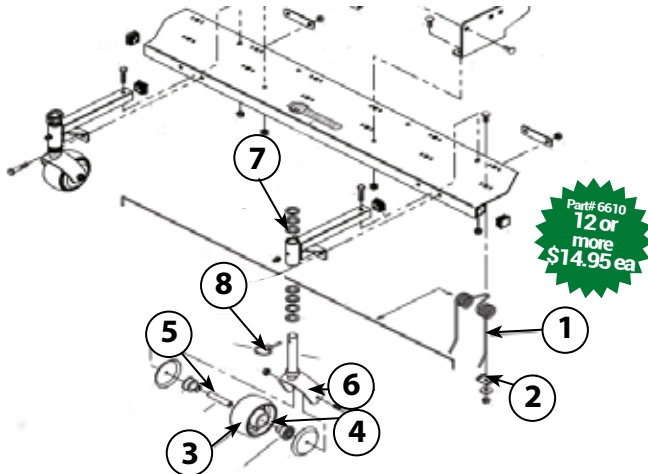
Walker Gearbox Lube

Mobile Lube 80W-90 Gear Lube

Order Number: 102508
Price : \$14.88



Dethatcher Parts



Part# 6610
12 or
more
\$14.95 ea

| | Order Number | Description | Price |
|---|--------------|--|---------|
| 1 | 6610 | Dethatching Tine (Need 12 per Rake) | \$15.95 |
| 2 | 6610-3 | Tine Retainer Clip | \$3.33 |
| 3 | 6715-3 | Roller Wheel Bearing | \$7.04 |
| 4 | 6715-2 | Roller Wheel | \$7.00 |
| 5 | 6715-6 | Axle Spacer Tube | \$2.06 |
| 6 | 6770 | Caster Wheel Fork | \$43.61 |
| 7 | 6770-2 | Spacer (1-1/8 x .765 x .125) | \$2.36 |
| 8 | 2775-1 | Lynch Pin (3/16 x 1-1/4) | \$3.72 |

WALKER Reuseable Dump Bag



2 or
more
\$69.99 ea

Order Number 5598
9.5 cu. Catcher Bag. Nylon bag
Price \$74.95



2 or
more
\$79.99 ea

Order Number 5598-2
10.0 cu. Catcher Bag. Nylon bag
Price \$85.95

Walker Dethatcher

DT40A Dethatcher, Fits
all Walker mowers. 40"
Wide dethatcher.

Order Number: A10
Price : \$899.99

Wall Mount
Order Number 6606-11 \$82.49





WALKER Add-Ons

Comfort Seat

- Standard on T23, T27i & B23i
- Replaceable Covers
- Optional armrests
- Available for all tractors (Except Model H)
- Models T and D- 6104-8
- Models B, S, C -6104-9
- Model R - 6104-10
- Does not work with manual deck lift



6104-10 shown

6104-8 \$594.00 **6104-10 \$439.00**
6104-9 \$558.00

Standard Seat

- Standard on S, C, B18, B19 and R
- Large Contour molded seat
- Models S, B18 and B19 5103
- Models C 5103-3



5103 \$250.00
5103-3 \$249.00

Armrests

- Used for operator comfort and security
- Fold up when not in use
- Kit #5885 Fits Standard Seat
- Kit # 6104-6 Fits Comfort Seat



5885 \$129.99
6104-17 \$159.95

Headlights

- LED headlight with durable cast aluminum housing with 5 led lamps in each light
- Shock isolated mounting arm includes integral light guards
- 5989-14 Models
- 5989-13 Models B, C, H27i, H24d
- 7989-14 Models D & T
- 2989-12 Models H37i
- 5989-15 Models R



5989-13 \$411.00 **5989-14 \$236.06**
7989-14 \$458.00 **5989-15 \$310.00**
2989-12 \$142.70

Instrument Panel Cover

- Protects Model D & T panel when parked outdoors or trailered in rain or snow.



7307-2 \$155.26

Single Wide Tail Wheel

- Replaces standard dual tail wheel on Model T
- Not recommended for use on Model D or with Hi-Dump
- Great for a smooth cut look



8049 \$319.00

Dual Tail Wheel

- Standard on Model T & D
- Two Independent tires
- Less turning resistance than single wide tail wheel.



7420-20 \$356.68

Tail Wheel Lock

- Locking solenoid locks tail wheel into straight ahead position for striping and hill side work
- Controlled from toggle switch on forward speed control
- Manual override is accomplished by deliberately turning in either direction.
- Available for Models D & T



8540 \$767.00

Spread Axle Tail Wheel

- Tail wheels on spread axle track behind drive tires and offer a smoother ride.
- Reduces maneuverability in tight spaces due to tail swinging out.
- Models C, D, T 7420-



Model D requires relocation kit 7420-8

7420-3 \$867.00
7420-8 \$79.58

Replaceable Wear Edge Kit

- Available on DC48 and DM52 decks
- Can be flipped over after being worn
- Can be replaced after both top and bottom edges are worn.
- Helps protect deck edges from curbs and walls.
- Each Kit includes 1 wear strip, 4 nuts and 4 bolts.
- For 48' Decks



7703-10 \$39.95



Adjustable Footrests

- Adjustable footrest clamps on carrier frame of 36", 42, 48, C52 and S74 decks.
- Not compatible with deck height adjuster
- 8662-10 - 36, 42, 48, C52
- 8662-9 - S74

8662-10 \$124.33

8662-9 \$152.00



Breakaway Blades

- Blades mount on break-away hub
- For use in mowing applications with more exposure to ground contact and debris.
- Minimizes blade damage and impact and shock loading on deck and drive train

5705-33 42" Deck 7705-8 48" Deck
5705-32 56" Deck 5705-34 74" Deck

5705-33 \$273.82 | 7705-8 \$288.00

5705-32 \$420.00 | 5705-34 \$534.00



Deck Height Washers

- Allows fine adjustment of cutting height
- Finer adjustment than 1/2" increments
- 5727-1 (36, 42, 48, 52 and 56 gear drive deck) 1/4" thick
- 8727 (52, 62 and 74 belt drive deck) 1/4" thick

5727-1 \$3.54 ea.

8727 \$4.54 ea.



GHS Blower Lockout

- Disengages GHS blower on Models C, T, and D
- The Blower Lockout disengages the grass handling system blower to reduce noise and increase power when using a side discharge deck, mulching deck or PTO-driven attachment. Disengaging the blower also prevents grass, snow, or debris from entering the grass catcher.

7541-1 \$59.51



Steering Lever Extensions

- Extend steering levers for easier reach
- This kit allows you to extend the length of the two steering levers, providing for easier reach and better maneuverability.

5453-13 \$34.98



BUY NOW & PAY LATER

PROPARTS DIRECT GIVES YOU THE OPTION TO BUY THE PARTS YOU NEED NOW AND PAY OVER TIME WITH AFFIRM. CHOOSE AFFIRM AT CHECKOUT TO APPLY FOR FIXED MONTHLY PAYMENT OPTIONS THAT FIT ANY BUDGET. *SUBJECT TO ELIGIBILITY. PAYMENT OPTIONS THROUGH AFFIRM ARE PROVIDED BY THESE LENDING PARTNERS. AFFIRM.COM/LENDERS



Cup Holder

Order Number: 5744-9

Price: \$67.75



Designed to fit any Walker mower. Mounts between Joystick. Easily retracts when deck is tilted up.



Curb Jumper Ramp

Allows for Walker Mowers to Easily back over a standard curb for access to medians, parking areas and raised beds. Includes cut outs for deck height adjustment. Stows on Footrest

5597 Without Deck Height Adjuster
5597-1 with Deck Height Adjuster

Order Number: 5597
Price: \$319.95

Order Number: 5597-1
Price: \$299.95

No-Catch Deflector

- Installed on catcher Door to convert GHS models to "no collection" rear discharge mowing.
- 8500-2 - 9.5/10.0 Bushel catcher
- 7500-2 - 7.0 Bushel Catcher

8500-2 \$289.00

7500-2 \$249.00



GHS Exhaust Screen Large Holes

- Use in wet conditions to help prevent the GHS from clogging and to boost vacuum action.
- Easily interchanges with standard screen
- 7512-13 - for 7.0 Bushel
- 7512-11 - for 10.0 Bushel

7512-13 \$168.26

7512-11 \$174.00



Removable Bins

- Two molded boxes split the weight of the larger catchers when dumping.
- Useful for single operator
- Fits 9.5 & 10 Bushel catchers
- 8510-11 Set Of Bins
- 8510-9 Left Side, 8510-10 Right Side

8510-11 \$576.00

8510-9 \$234.00

8510-10 \$289.00



SCAG POWER EQUIPMENT



Scag Cup Holder

- Fits All Models
- Mounts on Side by Drive levers

Order Number 920W
Price \$79.00

OEM PARTS



Scag Blade Buddy

- Fits All Models
- Slides Over Blade, Stops Turning

Order Number 9212
Price \$49.00



Scag Flat Free Front Caster Tire & Wheel Assembly - Fits Fixed Deck W/B & STHM

Order Number 9275
Price \$89.00



Scag Flat Free Front Caster Tire & Wheel Assembly - Fits SWU, SWZU, SZC and SFZ

Order Number 9276
Price \$88.00



Scag Flat Free Front Caster Tire & Wheel Assembly - Fits V-Rides Size: 11 x 4.0

Order Number 921D
Price \$96.00

SCAG OEM OILS



| Order Number | Description | Price |
|--------------|--------------------|---------|
| 486257C | Chassis Grease | \$15.98 |
| 486258C | Spindle Grease | \$15.49 |
| 486254C | 20W-50 Hydro 1 Gal | \$57.00 |
| 486255C | 20W-50 Hydro 1 qt. | \$15.89 |
| 486256C | 80W-90 Gear Lube | \$7.95 |

SCAG QUICK PARTS BY MOWER



Scag SW Walk Behind

| Order Number | Description | Price |
|--------------|-------------------|---------|
| 48203 | Transmission Belt | \$24.26 |
| 48202A | Wheel Belt | \$89.31 |
| 48278 | 32" Deck Belt | \$53.76 |
| 48089 | 36" Deck Belt | \$53.48 |
| 483518 | 48" Deck Belt | \$45.98 |
| 48087 | 36" RH Deck Belt | \$38.49 |
| 48285 | 48" RH Deck Belt | \$35.26 |



Scag Tiger Cat II

| Order Number | Description | Price |
|--------------|------------------------|---------|
| 485648 | 52" Pump Drive Belt | \$42.62 |
| 485649 | 61" Pump Drive Belt | \$41.49 |
| 483241 | 48" Deck Drive Belt LH | \$57.46 |
| 483242 | 52" Deck Drive Belt LH | \$70.45 |
| 485845 | 61" Deck Drive Belt LH | \$82.83 |
| 483239 | 48" Deck Drive Belt RH | \$27.72 |
| 483240 | 52" Deck Drive Belt RH | \$30.18 |
| 483157 | 61" Deck Drive Belt RH | \$50.76 |
| 48462-01 | Hydro Filter | \$22.33 |



Scag SWZ Hydro Walk Behind

| Order Number | Description | Price |
|--------------|---------------------|---------|
| 48553 | 36" Pump Drive Belt | \$44.26 |
| 48553 | 48" Pump Drive Belt | \$44.26 |
| 48587 | 52" Pump Drive Belt | \$49.56 |
| 48587 | 61" Pump Drive Belt | \$49.56 |
| 48204 | 36" Deck Belt | \$35.70 |
| 48089 | 48" Deck Belt | \$53.18 |
| 483518 | 52" Deck Belt | \$45.98 |
| 48088 | 61" Deck Belt | \$60.90 |
| 48087 | 36" Deck Belt RH | \$38.49 |
| 48285 | 48" Deck Belt RH | \$35.26 |
| 48265 | 52" Deck Belt RH | \$35.32 |
| 48462-01 | Hydro Filter | \$22.33 |



Scag Cheetah

| Order Number | Description | Price |
|--------------|---------------------------|---------|
| 484372 | Pump Drive Belt 48" / 52" | \$44.98 |
| 483316 | Deck Belt 48" | \$32.89 |
| 482239 | Deck Belt RH Side | \$31.63 |
| 483240 | Deck Belt 52" | \$30.18 |
| 483165 | Pump Drive Belt 61" / 72" | \$58.41 |
| 483741 | Deck Belt 61" | \$71.45 |
| 483157 | Deck Belt 61" | \$50.76 |
| 484088 | Deck Belt 72" | \$94.76 |
| 484159 | Deck Belt RH 72" | \$62.98 |
| 52114 | Hydro Filter | \$31.44 |
| 71943 | Hydro Filter | \$21.06 |



Scag SVR-V Ride II

| Order Number | Description | Price |
|--------------|---------------------|---------|
| 485902 | 36" Pump Drive Belt | \$25.57 |
| 483520 | 48" Pump Drive Belt | \$20.64 |
| 483520 | 52" Pump Drive Belt | \$20.64 |
| 483520 | 61" Pump Drive Belt | \$20.64 |
| 486023 | 36" Deck Belt | \$62.66 |
| 483966 | 48" Deck Belt | \$75.88 |
| 484100 | 52" Deck Belt | \$82.24 |
| 485880 | 61" Deck Belt | \$85.76 |
| 48462-01 | Hydro Filter | \$22.31 |



Scag Turf Tiger II

| Order Number | Description | Price |
|--------------|--------------------------|---------|
| 485909 | Pump Drive Belt | \$68.40 |
| 485928 | Pump Drive Belt (Diesel) | \$70.25 |
| 482876 | PTO Belt | \$24.53 |
| 482281 | 52" Deck Belt | \$60.17 |
| 481558 | 61" Deck Belt | \$84.63 |
| 481980 | Deck Belt | \$95.23 |
| 48758 | Hydro Filter | \$23.43 |



**WE HAVE AVAILABLE
100% OF THE PARTS!**



OEM Hurricane Blowers Parts for X3 and Z3 Stand-On Blowers. Hurricane was purchased by Briggs & Stratton last year and now Ferris and Billy Goat have versions of the stand-on blower. A lot of the part numbers are interchangeable. If you have the older Hurricane blower we have noted the old Hurricane part number and the new Ferris/Billy Goat part number.



| Old Hurricane Part # | Billy Goat Reference | Order Number | Description | Each |
|----------------------|----------------------|--------------|------------------------------|----------|
| 106-17-3007 | 84001319 | G5107037FS | Reversing Switch | \$41.49 |
| 101-17-5612 | 84001265 | G5106950FS | Safety Switch | \$21.49 |
| 101-18-1802 | 84001267 | G5106953FS | Left Deflector Motor | \$99.95 |
| 314-0618-255R | 84001397 | G5106952FS | Right Deflector Motor | \$99.95 |
| 0117-162024 | 84001260 | G5021541SM | Plastic Bushing | \$8.95 |
| ZP15017 | 84001573 | G5106821FS | Drive Belt Z3 | \$28.95 |
| X3-A7227 | 84001546 | G84009030 | Drive Belt X3 | \$46.95 |
| 425-1041-76010 | 84001471 | G5107194FS | Throttle Choke cable Z3 & X3 | \$30.49 |
| 425-103-174430 | 84001470 | G5107193FS | Drive Dampener | \$55.95 |
| 16127 | 84001238 | G5106923FS | Idler Spring Z3 & X3 | \$10.95 |
| 17-4101 | 84001376 | G5107103 | Idler Pulley Engine to Drive | \$24.49 |
| 104-17-5608 | 84001302 | G1714054 | Ignition Key Set (2) | \$6.49 |
| XP1745 | 84002320 | G5106813FS | 47.15 Raw Edge Belt | \$28.49 |
| ZP1507 | 5106821 | G5106821FS | Z3 Drive Belt | \$28.95 |
| 15128 | 84001203 | G5106888 | Extension Spring | \$6.49 |
| 104-17-5610 | | G5107021 | Ignition Snap-In Switch | \$31.95 |
| 106-17-2806 | 5107034 | G5107034 | Switch Seal | \$12.95 |
| 106-17-2817 | | G5107035FS | Relay | \$17.95 |
| ZP15027-5 | 84001578 | G5107048 | Caster Tire | \$99.95 |
| 314-17-4101 | 84001440 | G5107103 | Idler Pulley 3 ID, .506 ID | \$24.49 |
| 17-4103 | | G5107166 | Mule Drive Pulley | \$29.95 |
| X3-A7227 | | G84009030 | Belt Drive, Kohler Motor | \$46.95 |
| X310-2042 | | G5107339AAFS | Universal Deflector Gear | \$47.95 |
| ZP173007 | | G5601265 | JoyStick Assm | \$268.95 |



G5107258

The Impellers for Hurricane blowers have changed now that Billy Goat owns the company. You will have to measure your crankshaft to get the right one.

Used on certain Hurricane X3
Fits 1-7/16 Crankshaft
Replaces X3-1637
Billy Goat 84001746
Order Number G5107448
Price \$788.34



Used on Hurricane Z3
2015 to Current
Replaces ZF15018
Order Number G5419590
Price \$582.12



NOTE: G5107503
Impellar for X3 2014 to 2016
Replaces X310-203727
If Crankshaft is 1-7/16 use part
G5107448. If Crankshaft is 1-1/8.
Use Crank upgrade kit G5107259
(X3-CH70) and pulley G5107063

Call 800 305 9255 | Original & Aftermarket Parts



Nozzle Parts

| Order Number | Description | Price |
|--------------|---|----------|
| 485691 | Switch Plunger, Double Pole Nozzle Limit | \$10.63 |
| 486353 | Nozzle Direction Switch | \$80.69 |
| 463534 | Gear Drive Motor, Kit | \$899.69 |
| 486811 | Nozzel Control Module | \$278.76 |
| 486838 | Control Cable Air Direction (Replaces 486276) | \$88.72 |

Replaces
486671



Hydro Drive Parts

| Order Number | Description | Price |
|--------------|------------------------|----------|
| 481164 | Hydro Tank Cap | \$15.26 |
| 48462-01 | Hydro Filter | \$22.33 |
| 485788 | Wheel Motor, SVRII | \$852.85 |
| 04063-25 | Woodruff Key 5/16-1" | \$2.53 |
| 04021-19 | Center Lock Nut 1/2-13 | \$0.36 |
| 486265 | Clutch GT3.5 | \$591.06 |
| 483112 | SMZC Deck Drive Spring | \$12.26 |
| 486322 | Pump Drive Belt | \$27.55 |
| 483213 | Pulley, 4.5 Dia Idler | \$46.13 |



Electrical Parts

| Order Number | Description | Price |
|--------------|-----------------------------------|----------|
| 484721 | Tiger Eye, Cluster Gauge | \$328.44 |
| 485833 | Switch, PTO Sealed | \$41.30 |
| 462069 | Key Assy W/Fob | \$7.04 |
| 481182 | Indicator Light (EFI Models Only) | \$41.23 |
| 48798 | Key Switch | \$23.72 |
| 481637 | N/O Switch | \$8.48 |
| 48717 | Switch | \$8.21 |
| 486265 | Clutch w/Tag GT3.5 | \$591.06 |
| 486139 | Wire Harness Adapter | \$21.67 |



Blower Housing Parts

| Order Number | Description | Price |
|--------------|----------------------------------|----------|
| 463312 | Blower Housing w/Decals | \$734.15 |
| 486281 | Outlet Adapter, Impellar Housing | \$262.21 |
| 486695 | Outlet Adapter, Nozzle Housing | \$180.54 |
| 485691 | Plunger Switch, Double Pole | \$10.63 |
| 463534 | Gear Drive Motor | \$899.69 |
| 9278 | Caster Wheel | \$154.95 |



Fuel System Parts

| Order Number | Description | Price |
|--------------|-------------------------|----------|
| 484246 | Fuel Gauge Assy, 16-1/2 | \$76.67 |
| 484286 | Fuel Cap Tethered | \$46.89 |
| 484342 | Carbon Cannister, 550cc | \$88.89 |
| 486670 | Muffler | \$149.55 |



Gearbox Parts

| Order Number | Description | Price |
|--------------|---------------------|----------|
| 486324 | Gearbox Output Belt | \$54.42 |
| 486265 | Clutch, GT3.5 | \$591.06 |
| 486323 | Gearbox Input Belt | \$66.99 |
| HG70525 | Seal Kit | \$37.58 |



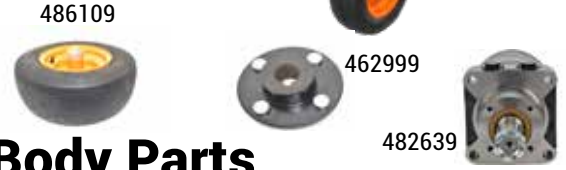
TURF STORM SPRAYER

Model STS60-21BV



Boom Arm Parts

| Order Number | Description | Price |
|--------------|--------------------------|----------|
| 486150 | Boom Arm Spring | \$32.56 |
| 463152 | Nozzle Assembly RH | \$42.99 |
| 486699 | Nozzle Assembly Main | \$42.99 |
| 463151 | Nozzle Assembly LH | \$42.99 |
| 486557 | Nozzle Strainer #50 Mesh | \$2.91 |
| 486100-01 | Nozzle Tip | \$18.17 |
| 486098 | Nozzle Cap | \$2.16 |
| 486097 | Nozzle Body, Single LH | \$23.13 |
| 486700 | Nozzle Body, Single RH | \$16.55 |
| 486090 | 12V Electric Pump | \$364.08 |
| 486186 | Screen | \$55.64 |



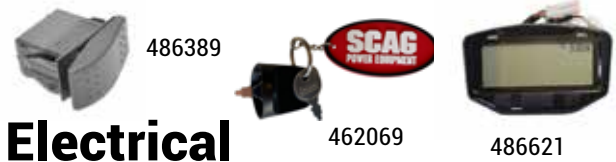
Body Parts

| Order Number | Description | Price |
|--------------|------------------------------|----------|
| 486340 | Grease Cap | \$11.65 |
| 481657-01 | Cone Bearing | \$2.80 |
| 486109 | Caster Wheel Assy, 16x6.50x8 | \$198.77 |
| 484243 | Fuel Gauge | \$70.43 |
| 484286 | Tethered Fuel Cap | \$46.89 |
| 486470 | Muffler, 21 HP BV | \$201.91 |
| 462999 | Wheel Hub Assy | \$95.90 |
| 482639 | Wheel Motor | \$837.86 |
| 48462-01 | Oil Filter | \$22.33 |
| 486111 | Pump Drive Belt | \$27.68 |
| 48680 | Castle Nut | \$14.85 |
| 484754 | Spring | \$16.07 |



Hopper Parts

| Order Number | Description | Price |
|--------------|----------------------|----------|
| 486381 | 220 lb Hopper Cover | \$91.87 |
| 486390 | Hopper Gate Cable | \$214.44 |
| 486439 | Side Deflector Cable | \$212.69 |
| 486544 | Pattern Adjust Cable | \$249.74 |
| 486373 | Milled Dial | \$11.49 |
| 486541 | Door Assist Spring | \$8.39 |
| 486440 | Electric Motor Gear | \$484.57 |
| 486351 | Impeller | \$58.84 |
| 486389 | Rocker Switch | \$16.02 |
| 486455 | Motor Controller | \$506.59 |



Electrical

| Order Number | Description | Price |
|--------------|----------------------------|----------|
| 483473 | Double Pole Plunger Switch | \$14.62 |
| 462069 | Key Assy w / Fob | \$7.04 |
| 486389 | Rocker Switch | \$16.02 |
| 486621 | Trail Tech Display | \$316.27 |



Grease & Oils

| Order Number | Description | Price |
|--------------|-------------------|---------|
| 486257C | Chassis Grease | \$15.98 |
| 486258C | Spindle Grease | \$15.49 |
| 486254C | 20W-50 Oil Gallon | \$57.00 |
| 486255C | 20W-50 Oil Quart | \$15.89 |



Kits & Accessories

| Order Number | Description | Price |
|------------------|------------------|------------|
| SGSTS Foamer | SGSTS Foamer | \$1,336.99 |
| SGSTS Light Kit | SGSTS Light Kit | \$263.99 |
| SGSTS 7GPM PUMP | SGSTS 7 GPM Pump | \$512.99 |
| SGSTS Rear tray | SGSTS Rear Tray | \$79.99 |
| SGSTS WEIGHT KIT | SGSTS Weight Kit | \$243.99 |

Call 800 305 9255 | Original & Aftermarket Parts



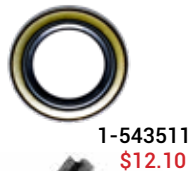
Popular replacement Parts for Current and older Models

Be sure to check your serial number before ordering.
Part below for models 2018 and newer

Z-Spray Max



| | | |
|----------------------|-------------|------------|
| Key Switch | 135-6052 | \$23.99 |
| Hour Meter | 135-5259 | \$39.99 |
| Striker Head Only | 135-8900 | \$143.99 |
| Operation Switch | 135-6121 | \$56.16 |
| Muffler | 135-5685 | \$250.99 |
| Belt | 135-5664 | \$37.99 |
| Throttle Cable | 135-5260 | \$37.99 |
| Choke Cable | 135-5707 | \$37.99 |
| Fuel tank / Cap | 135-7172 | \$179.99 |
| Large Hopper cover | 135-7981 | \$52.99 |
| Hopper | 135-5985 | \$324.44 |
| Dial | 126-0988 | \$8.35 |
| Cable Push/Pull | 135-5931 | \$45.66 |
| Hose Reel | 135-5787 | \$307.99 |
| Spot Spray Gun | 135-5773 | \$55.64 |
| Left tank Asm | 135-5917 | \$374.84 |
| Hydraulic Filter | 142-3049 | \$29.99 |
| Tandem Pump | 135-5665 | \$1,483.99 |
| RH Wheel Motor | 135-5231 | \$557.54 |
| LH Wheel Motor | 135-5230 | \$557.54 |
| Chrome Valve | 135-5760 | \$25.19 |
| 5.0 GPM Pump | 142-3321 | \$296.09 |
| Caster Locking cable | 135-5644 | \$87.14 |
| Foot Plate Spring | 135-5654 | \$11.54 |
| Directional Valve | 135-5721 | \$64.99 |
| Gauge | 142-3437 | \$30.44 |
| Hose Barb | 120-8671 | \$1.95 |
| Body Nozzle Left | 135-5788 | \$8.99 |
| Body Nozzle Center | 135-5789 | \$8.99 |
| Body Nozzle Right | 135-5790 | \$8.99 |
| RT Tank Asm | 135-5918 | \$374.84 |
| Spray Tank cap | 135-5916 | \$7.99 |
| Cone Bearing | 1-633585 | \$18.99 |
| Seal | 103-0063 | \$8.18 |
| LH Caster Fork | 135-5441-05 | \$155.00 |
| RH Caster Fork | 135-5446-05 | \$155.00 |
| Fork Cone Bearing | 254-92 | \$15.74 |
| Grease Seal | 1-543511 | \$12.10 |
| Dust Cap rubber | 135-5756 | \$2.59 |
| Solenoid | 135-6189 | \$29.99 |



Z-Spray Intermediate



| | | |
|--------------------------------|-------------|------------|
| Nozzle Left | 135-5788 | \$8.99 |
| Nozzle Right | 135-5790 | \$8.99 |
| Hour Meter | 135-5259 | \$39.99 |
| Key Switch | 135-6052 | \$25.19 |
| Rocker Switch | 100-8469 | \$23.09 |
| Striker Head Only | 135-8900 | \$143.99 |
| Operators Switch | 135-6121 | \$56.16 |
| Solenoid | 135-6189 | \$31.49 |
| Muffler | 135-5685 | \$263.54 |
| Belt | 135-5664 | \$37.99 |
| Throttle Cable | 135-5260 | \$37.99 |
| Choke Cable | 135-5707 | \$37.99 |
| Fuel Tank Asm / W Cap | 135-7172 | \$188.99 |
| Large Hopper Cover | 135-7981 | \$52.99 |
| Hopper | 135-5985 | \$324.44 |
| Dial (126-0988) | 142-3319 | \$2.19 |
| Dial Mount | 126-0985 | \$2.19 |
| Spinner (135-5954) | 142-3506 | \$38.02 |
| Push /Pull Cable | 135-5931 | \$45.66 |
| Push/Pull Cable | 135-5935 | \$89.99 |
| Hose Reel | 135-5787 | \$307.99 |
| LT Tank Asm | 135-5993 | \$314.99 |
| Tank Cap | 135-5916 | \$8.39 |
| Spot Spray Gun | 135-5773 | \$58.42 |
| LH Wheel Motor | 135-5230 | \$585.42 |
| RH Wheel Motor | 135-5231 | \$555.54 |
| Tandem Pump | 135-5665 | \$1,483.99 |
| Hydraulic Filter | 142-3049 | \$29.99 |
| 5.0 GPM Pump | 142-3321 | \$310.89 |
| Chrome Valve | 135-5760 | \$25.19 |
| Caster Locking Cable | 135-5644 | \$87.14 |
| Directional Valve | 135-5721 | \$64.99 |
| Gauge | 142-3437 | \$28.99 |
| Hose Barb | 120-8671 | \$1.95 |
| RH Tank Asm | 135-5995 | \$314.99 |
| Strainer | 135-5765 | \$23.09 |
| Caster Wheel & Tire (135-5974) | 142-5509 | \$126.99 |
| Wheel Cone Bearing | 1-633585 | \$17.99 |
| Seal | 103-0063 | \$7.89 |
| LH Caster Fork | 135-5441-05 | \$155.00 |
| RH Caster Fork | 135-5446-05 | \$155.00 |

Z-Spray Parts are Now In-stock for MAX , Intermediate and Junior Models. For models 2017 and older give us a call or visit our website.



**The Fastest Moving Parts!
Don't See What you need?**

**Give us a call
800 305 9255**



Z-Spray Junior



Z-Spray LTS

| | | |
|-----------------------|----------|----------|
| Nozzle Left | 135-5788 | \$8.99 |
| Nozzle Right | 135-5790 | \$8.99 |
| Hour Meter | 135-5259 | \$39.99 |
| Key Switch | 135-6052 | \$25.19 |
| Rocker Switch | 100-8469 | \$23.09 |
| Striker Head Only | 135-8900 | \$143.99 |
| Operators Switch | 135-6121 | \$56.16 |
| Solenoid | 135-6189 | \$31.49 |
| Muffler | 135-5685 | \$263.54 |
| Belt | 135-5664 | \$37.99 |
| Throttle Cable | 135-5260 | \$37.99 |
| Choke Cable | 135-5707 | \$37.99 |
| Fuel Tank Asm / W Cap | 135-7172 | \$188.99 |
| Large Hopper Cover | 135-7981 | \$52.99 |
| Hopper 150lb | 135-6010 | \$282.44 |
| Dial | 142-3359 | \$8.99 |
| Dial Mount (126-0985) | 142-3319 | \$2.49 |

| | | |
|------------------------|----------|------------|
| Manifold Valve Control | 135-6362 | \$361.99 |
| Ignition Switch | 126-6285 | \$47.99 |
| Rocker Switch | 100-1535 | \$74.99 |
| Safety Switch | 82-2190 | \$12.99 |
| Throttle Control | 135-3149 | \$37.99 |
| Push/Pull Cable | 135-3150 | \$30.99 |
| Transaxle | 126-2814 | \$1,839.99 |
| 7 Inch Fan | 126-2980 | \$18.99 |
| Center Knee Pad | 142-2751 | \$71.49 |
| Left Nozzle Asm | 126-3667 | \$71.49 |
| Right Nozzle Asm | 126-3669 | \$71.49 |
| Frame Bearing | 126-3008 | \$17.99 |

| | | |
|---------------------------|----------|----------|
| Side Deflector (126-1217) | 142-3619 | \$72.99 |
| 3.8 Gpm Pump | 142-2301 | \$419.99 |
| Hopper Screen Small | 126-3242 | \$180.99 |
| Spreader Motor | 126-6231 | \$503.99 |
| Water Cap | 126-0285 | \$16.99 |
| Front Axle | 126-6733 | \$280.99 |
| Wheel & Tire Asm | 142-2736 | \$139.64 |
| Wheel Bearing | 116-0720 | \$19.99 |
| Motion Cable | 126-2169 | \$180.99 |
| Rod End Steering | 126-7181 | \$66.99 |
| Rod End LH | 126-7182 | \$66.99 |
| Strainer | 126-4374 | \$54.99 |

Check Us Out online for Calibration specs, older manuals and Installation Instructions on Tanks and Kits!



Z-Spray Aerator

| | | |
|----------------------|-------------|------------|
| Spinner (135-5954) | 142-3506 | \$38.02 |
| Push /Pull Cable | 135-5931 | \$45.66 |
| Push/Pull Cable | 135-5935 | \$89.99 |
| Hose Reel | 135-5787 | \$307.99 |
| LT Tank Asm | 135-5993 | \$314.99 |
| Tank Cap | 135-5916 | \$8.39 |
| Spot Spray Gun | 135-5773 | \$58.42 |
| LH Wheel Motor | 135-5230 | \$585.42 |
| RH Wheel Motor | 135-5231 | \$557.54 |
| Tandem Pump | 135-5665 | \$1,483.99 |
| Hydraulic Filter | 142-3049 | \$29.99 |
| 5.0 GPM Pump | 142-3321 | \$310.89 |
| Chrome Valve | 135-5760 | \$25.19 |
| Caster Locking Cable | 135-5644 | \$87.14 |
| Directional Valve | 135-5721 | \$64.99 |
| Gauge | 142-3437 | \$28.99 |
| Hose Barb | 120-8671 | \$1.95 |
| RH Tank Asm | 135-5995 | \$314.99 |
| Strainer | 135-5765 | \$23.09 |
| Caster Wheel & Tire | 142-5509 | \$126.99 |
| Wheel Cone Bearing | 1-633585 | \$17.99 |
| Seal | 103-0063 | \$7.89 |
| LH Caster Fork | 135-5441-05 | \$155.00 |
| RH Caster Fork | 135-5446-05 | \$155.00 |

| | | |
|------------------|-------------|----------|
| Hydraulic Filter | 142-3049 | \$29.99 |
| Choke Cable | 135-5707 | \$43.97 |
| Hour Meter | 135-5259 | \$47.40 |
| Key Switch | 135-7094 | \$27.99 |
| Striker Head | 135-8900 | \$159.17 |
| Muffler | 135-9252 | \$141.99 |
| RH Pump | 135-9026 | \$759.95 |
| LH Pump | 135-9024 | \$835.99 |
| LH Caster Fork | 142-0300-05 | \$151.19 |
| Wheel & Tire | 135-8615 | \$78.13 |
| Axle - Screw | 135-6300 | \$11.99 |
| RH Caster Fork | 142-0301-05 | \$154.99 |
| Drive Belt | 135-9075 | \$57.49 |

| | | |
|----------------------|-------------|----------|
| Reel Tine | 135-9387-05 | \$171.99 |
| Tine Coring | 126-2143 | \$9.99 |
| Pillow Block Bearing | 135-9379 | \$22.89 |
| Caster Locking Cable | 135-8632 | \$106.24 |
| Lift Cylinder | 135-9157 | \$257.99 |

Spray Tips

Mixing of liquid or dry product should be in accordance to manufactureres labels. Remember that the Z-Spray is designed for low volume spraying so the mix will be more concentrated.



| | | | | | |
|--|---|---|---|--|--|
| Green Tip 1/5 Spray Tip Order Number: 135-8285 Price: \$21.99 | Yellow Tip 1/4 Spray Tip Order Number: 142-3307 Price: \$21.99 | Violet Tip 1/3 Spray Tip Order Number: 142-3308 Price: \$19.99 | Blue Tip 2/5 Spray Tip Order Number: 135-8283 Price: \$16.32 | Red Tip 1/2 Spray Tip Order Number: 142-3310 Price: \$16.99 | Brown Tip 3/4 Spray Tip Order Number: 142-3311 Price: \$20.99 |
|--|---|---|---|--|--|

Call 800 305 9255 | Original & Aftermarket Parts



WRIGHT WHEEL MOTORS Can be model specific. Please verify with serial number before ordering.



| Order Number | Description | Used On | Price |
|--------------|----------------------|---------------|----------|
| 32410001 | Hydro Motor MF 1606 | WS | \$759.95 |
| 32410002 | Hydro Motor MF 1409 | WS | \$899.95 |
| 32410003 | Hydro Motor 1209 | WS, WSE | \$899.95 |
| 32410004 | Hydro Motor 12P | WS32, WS36 | \$699.95 |
| 32410005 | Hydro Motor 15E | WSE, WSZK, WZ | \$999.95 |
| 32410007 | Hydro Motor | WS | \$789.95 |
| 32410009 | Hydro Motor P Seal K | | \$799.95 |

| Order Number | Description | Used On | Price |
|--------------|---------------------------|------------|------------|
| 32410010 | Hydro Motor P Bearing Kit | WS32, WS36 | \$188.95 |
| 32410011 | Hydro Motor 15H HGM | WSZK | \$1,158.00 |
| 32410012 | Hydro Motor 15H HGM | WSZK | \$1,102.99 |
| 32410013 | Hydro Motor P Seal Kit | WS32, WS36 | \$198.00 |
| 32410018 | Hydro Motor E Seal Kit | | \$191.99 |
| 32410022 | Hydro Motor 12P | | \$759.99 |
| 32410023 | Hydro Motor 15P | | \$789.95 |

POPULAR WRIGHT MOWER PARTS

As Needed per Bulletin SVC-TSB-0115

| Order Number | Description | Price | Order Number | Description | Price | Order Number | Description | Price |
|--------------|-----------------|----------|--------------|-------------|----------|--------------|-------------|---------|
| 71410001 | Electric Clutch | \$475.99 | 71460136 | Spindle | \$249.95 | 95460028 | Spindle Kit | \$36.99 |

Used on WSE48/52/61/36/42 Mowers

| Order Number | Description | Price | Order Number | Description | Price | Order Number | Description | Price |
|--------------|-------------|----------|--------------|--------------|---------|--------------|---------------|---------|
| 71460207 | Spindle | \$249.99 | 93990003 | Wright Paint | \$25.99 | 52410003 | Safety Switch | \$14.99 |

WRIGHT OEM PAINT

Used on WS32 /WS36 Mowers

| Order Number | Description | Price | Order Number | Description | Price | Order Number | Description | Price |
|--------------|----------------|---------|--------------|-------------|---------|--------------|--------------|---------|
| 71460004 | Spindle Pulley | \$90.99 | 53490019 | Relay | \$16.99 | 71460006 | Idler Pulley | \$38.84 |

Used on WS32 /WS36 Mowers

| Order Number | Description | Price | Order Number | Description | Price | Order Number | Description | Price |
|--------------|---------------|---------|--------------|----------------|---------|--------------|---------------|---------|
| 72490003 | Wheel Plastic | \$18.89 | 14990003 | Bronze Bushing | \$15.99 | 14990001 | Pivot Bushing | \$12.59 |

Used on WS32 Fixed Deck

| Order Number | Description | Price | Order Number | Description | Price | Order Number | Description | Price |
|--------------|--------------|--------|--------------|-------------|--------|--------------|--------------|---------|
| 18410012 | Knob Plastic | \$9.99 | 17460023 | Dust Cap | \$8.99 | 71460009 | Idler Pulley | \$42.99 |

Used on WVG/WVH Models

| Order Number | Description | Price | Order Number | Description | Price | Order Number | Description | Price |
|--------------|-------------|---------|--------------|--------------|---------|--------------|-------------|----------|
| 52420002 | Throttle | \$31.49 | 52420003 | Blade Switch | \$34.64 | 71460131 | Spindle | \$237.99 |



Order Number 34490002
Used on Wright Mowers



Order Number 39410007
Used on Wright B mowers & ZXL mowers. For ZT-3400



Wright Commercial Mower Belts

| Order Number | Price |
|--------------|----------------|
| 71460001 | \$45.99 |
| 71460002 | \$51.99 |
| 71460003 | \$69.99 |
| 71460010 | \$50.99 |
| 71460011 | \$64.99 |
| 71460012 | \$56.99 |
| 71460013 | \$75.99 |
| 71460034 | \$51.99 |
| 71460040 | \$98.99 |
| 71460062 | \$65.99 |
| 71460063 | \$62.99 |
| 71460064 | \$58.99 |
| 71460065 | \$53.99 |
| 71460066 | \$49.99 |
| 71460067 | \$59.99 |
| 71460070 | \$49.99 |
| 71460071 | \$93.99 |
| 71460087 | \$91.99 |
| 71460095 | \$40.99 |

MICHELIN® TWEEL TIRE



Add-ons and Accessories

The Newest in Tire Innovation. Leaves a light foot print and last 10x longer than regular tires.



The MICHELIN X® TWEEL™ tires represent a significant technological advancement in the tire industry. No downtime (no flats!) The TWEEL™ airless radial tire is designed to perform like a pneumatic tire, but without the inconvenience and downtime associated with flat tires.

| Mower | Size | Order Number | Price |
|---------------------|------|--------------|-----------------|
| Stander I / Sport I | 18.5 | 72410097 | \$489.95 |
| Stander X / Sport X | 18.5 | 72410097 | \$489.95 |
| ZK 61" & 72" | 24 | 72410098 | \$689.00 |
| ZK 52" | 24 | 72410110 | \$749.95 |
| ZXT 52" | 26 | 72410103 | \$798.00 |

| Mower | Size | Order Number | Price |
|---------------|----------------|--------------|-------------------|
| ZXT 61" & 72" | 26 | 72410104 | \$796.00 |
| ZK 72" | Dual Tweel Kit | 95410048 | \$2,999.00 |
| ZXT 72" | Dual Tweel Kit | 95410050 | \$3,599.00 |
| ZK 72" | Dual Wheel Kit | 95410045 | \$1,300.00 |
| ZXT 72" | Dual Wheel Kit | 95410051 | \$1,500.00 |

NORTHERN GRASS BAFFLE KIT

| Description | Order Number | Price |
|----------------|--------------|-----------------|
| 52" Baffle Kit | 98440015 | \$349.99 |
| 62" Baffle Kit | 98450014 | \$359.99 |
| 72" Baffle Kit | 98460089 | \$379.99 |



Northern Grass Kit to help with Air flow for thicker, wetter Grass. Kit includes: Mounting hardware, trim baffle and discharge baffle



Trimmer Holder

- Fits All Wright Stander Models
- Mounts trimmer right on mower
- Good for single Operator

Order Number 98470110
Price \$99.95 ea.



Jack Socket Bracket

- Fits All Wright Models
- Allows For jack to be mounted to front of mower

Order Number 95410047
Price \$99.00 ea.

* Does not include jack



Light Pod Kit

- Fits All Wright Models
- Includes 2 pods, brackets and wiring harness

Order Number 95420008
Price \$179.00 ea.



X-Blade Adapter Kit

- * spindle not included
 - Fits All Wright Models
 - Allows dual blades and creates finer clippings
- Package of 2 **Order Number XB2** **Price \$21.95 ea.**
Package of 3 **Order Number XB3** **Price \$32.89 ea.**



ZK ADD-ONS

Add-ons for the Stander ZK

| Description | Order Number | Price |
|--------------------------------|--------------|-------------------|
| ZK Tractor Weight kit, 100 lbs | 95410044 | \$486.99 |
| Dual Wheel Kit | 95410045 | \$1,300.00 |



STANDER B ADD-ONS

Add-ons for the Stander B

| Description | Order Number | Price |
|-------------|--------------|-----------------|
| Bag Kit | 95490020 | \$129.99 |
| Stripe Kit | 98460074 | \$119.95 |

ADDITIONAL PARTS

Additional parts for servicing and other accessories



| Description | Order Number | Price |
|---------------------------|--------------|-----------------|
| Hydro Filter | 34490002 | \$24.98 |
| 15W-50 Hydro Oil | 36490013 | \$15.49 |
| Easy on / Off Block Plate | 93460215 | \$105.99 |
| Fire Extinguisher Bracket | 98490021 | \$99.95 |
| Light Bar Bracket* | 98490027 | \$54.99 |

* Light bar not included



COLLECTION BAG

Nylon Mesh Trash Collections bags

| Description | Order Number | Price |
|------------------------|--------------|----------|
| Stander X / WSTX/WSLG | 95490014 | \$129.99 |
| Stander I / WSTN / WSS | 95490015 | \$129.99 |
| Velke HC / WVLC/WVGC | 95490016 | \$129.99 |
| WSZK | 95490017 | \$129.99 |

Call 800 305 9255 | Original & Aftermarket Parts



Dingo Compact Utility Loaders

Dingo Tracks



| Order Number | Description | Price |
|--------------|---|----------|
| 136-5847 | Track - STD Tread - Fits TX222, TX320 and TX420 | \$699.95 |
| 108-5640 | Narrow Track - Aggressive tread - Fits TX222, TX220, TX320, TX420 | \$864.95 |
| 136-5848 | Wide Track - Fits TX425, TX525 and TX427 | \$819.95 |
| 112-4816 | Rubber Track - Fits TRX15, TRX19, TRX16, TRX20 | \$544.49 |
| 136-5845 | Wide Track - Fits TX-1000 | \$949.00 |
| 136-5846 | Narrow Track - Fits TX-1000 | \$829.95 |
| 110-0069 | Track Alignment Tool | \$329.95 |
| 108-9749 | Aggressive Wide Track Fits TX425 & TX525 | \$994.49 |
| 138-0804 | Narrow Track For TX-1000 (22327, 22351) Sprocket Driven | \$949.95 |



Dingo Track Alternatives

Due to limited supply on Tracks from Toro, we sourced a quality track that can replace a few Toro Dingo tracks. This high quality track is also used on machines from Bobcat, Cat and New Holland.

| Order Number | Description | Price |
|-----------------|-------------------|----------|
| 153X28X89SNX | Replaces 136-5847 | \$349.95 |
| 240X28X87.63SNX | Replaces 136-5848 | \$479.95 |
| 240X37X87.63SNX | Replaces 136-5845 | \$549.95 |
| 152X22X89SNX | Replaces 112-4816 | \$279.95 |

Quick Attach Plate **Order Number: 132-8418**

Toro Dingo Quick Attach Plate. Used to mount attachments to all Dingos.

Price : \$995.95



Dingo Track Parts



| Order Number | Description | Price |
|--------------|---|----------|
| 138-0782 | Narrow Track Road Wheel Includes Bearing, Seal, Snap Ring and Cap | \$59.95 |
| 106-7620 | Narrow Track Road Wheel - Includes Bearing | \$50.95 |
| 120-5378 | Dingo Bearing For 106-7620 & 106-7621 Wheel | \$13.89 |
| 105-0248 | Wide Track Road Wheel Kit Includes Bearing, Seal, Snap Ring and Cap | \$83.95 |
| 117-1310-OP | Guide Track Kit - Fits Models 22321, 22323, 22342 | \$480.95 |
| 104-6123 | Wheel Tensioner Assembly- Fits 22334, 22322, 22320 and 22307 | \$347.95 |
| 138-1421 | Road Wheel Asm, Fits TX-1000 Replaces 125-0431 | \$269.00 |

Dingo Filter Kits

TX427 Models 22321 & 22322

50 / 200 Hour Kit
Includes:
Air Filter 108-3811
Engine Oil Filter 115-8189
Hydro Filter 86-3010



Order Number 136-4774
Price: \$39.95

TX525 Models 22323 & 22324

50 Hour Kit
Includes:
Air Filter 108-3811
Engine Oil Filter 115-8189



Order Number 136-4772
Price: \$33.49

TX525 Models 22323 & 22324

200 Hour Kit
Includes:
Air Filter 108-3811
Engine Oil Filter 115-8189
Hydro Filter 86-3010
Inline Filter 112-7836
Fuel Spin-on 63-8300



Order Number 136-4773
Price: \$84.95

TX1000 Models 22327 & 22328

200 Hour Kit
Includes:
Air Filter 108-3811
Engine Oil Filter 104-5169
Hydro Filter 86-3010
Inline Filter 112-7836
Fuel Spin-on 63-8300



Order Number 136-4771
Price: \$85.49

TX1000 Models 22327 & 22328

50 Hour Kit
Includes:
Air Filter 108-3811
Engine Oil Filter 104-5169



Order Number 136-4770
Price: \$31.95

TRX-26 STX Models 22974 & 23208

50 Hour Kit
Includes:
Air Filter 119-5944
Engine Oil Filter 119-5852



Order Number 137-3816
Price: \$48.49

TRX-16 & 20 Models 22972 & 22973

50 Hour Kit
Includes:
Air Filter 120-7448
Engine Oil Filter 119-5852



Order Number 137-3815
Price: \$44.49

BUY NOW & PAY LATER

PROPARTS DIRECT GIVES YOU THE OPTION TO BUY THE PARTS YOU NEED NOW AND PAY OVER TIME WITH AFFIRM. CHOOSE AFFIRM AT CHECKOUT TO APPLY FOR FIXED MONTHLY PAYMENT OPTIONS THAT FIT ANY BUDGET. *SUBJECT TO ELIGIBILITY. PAYMENT OPTIONS THROUGH AFFIRM ARE PROVIDED BY THESE LENDING PARTNERS: AFFIRM.COM/LENDERS



| Order Number | Description | Price |
|--------------|------------------------------------|---------|
| 63-8300 | Spin On Diesel Fuel / Water Filter | \$26.95 |
| 115-8189 | Filter | \$13.89 |
| 99-3198 | Inner Filter | \$42.49 |
| 99-3173 | Air Filter | \$42.49 |
| 115-5304 | Gas Cap | \$24.95 |
| 104-7418 | Gas Cap | \$33.49 |
| 100-1854 | Glow Plug | \$87.95 |



TORO Dingo Compact Utility Loaders

Mufflers

| Order Number | Description | Price |
|--------------|---|----------|
| 105-0249 | Muffler Fits TX420, TX425 and TX427 | \$429.95 |
| 105-8381 | Muffler Fits TX222, TX322, TX220, TX323, TX525N | \$319.19 |
| 117-1828 | Muffler Fits TX320-D Model 22303 | \$379.95 |
| 98-2759 | Muffler Fits TX420 model 22306 | \$579.95 |
| 106-9584 | Muffler Fits TX525 | \$444.95 |
| 99-8343 | Muffler Gasket Fits TX220 and TX 525 | \$14.49 |
| 25 041 17-S | Muffler Gasket Fits TX 222, 322, 420, 425, 413, 220, 323 | \$2.20 |
| 138-0753 | Diesel Muffler Fits TX-1000 Models 22327 & 22328 | \$355.95 |
| 2112-11 | Clamp | \$6.95 |



DINGO WHEEL MOTORS

| Order Number | Description | Price |
|--------------|---|------------|
| 98-2767 | Wheel Motor Fits 22306 & 22307 (200000-2400003000) | \$1,699.95 |
| 106-7654 | Wheel Motor Fits TX 420, TX-425, TX-525, TX-427 (240000301 & up) | \$1,699.95 |
| 114-1756 | Wheel Motor 22307, 22320, 22322 & 22324 (2007 & up) | \$1,889.95 |
| 104-8470 | Wheel Motor 22308, 22330, 22970, 22971, 22972, 22793, 22974 / TRX(2400000 and up) | \$1,779.95 |
| 99-3052 | Wheel Motor Fits 22303, 22304, 22305, 22311, 22312, 22317, 22318, 22336, 22337 (2100000 and Up) | \$1,699.95 |
| 138-0778 | Right Side Fits TX-1000 Models 22327, 22328, 22328HD | \$1,349.95 |
| 138-0761 | Left Side Fits TX-1000 Models 22327, 22328 | \$1,349.95 |



Trencher Nose Sprocket

Roller Assembly - Includes
Roller Nose and Bearings

Order Number 107-9325
Price: \$368.49



Auger Teeth 6" to 30" Augers

| Order Number | Description | Price |
|--------------|-------------------|----------|
| 104-5998 | Tooth Wisdom | \$489.95 |
| 107-9314 | Pilot Auger | \$68.00 |
| 104-5996 | Carbide Tooth (W) | \$49.95 |
| 107-9312 | Inner Tooth | \$16.95 |
| 104-5997 | Chisel Tooth | \$47.95 |
| 107-9313 | Outer Tooth | \$19.49 |

ROTARY BROOM BRUSHES



| Order Number | Description | Order Price |
|--------------|--------------------|-------------|
| 94-7372 | Poly Brush Element | \$31.49 |
| 95-5942 | Wire Brush Element | \$44.37 |

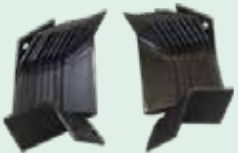


Aerator Tine Pack Kit

Includes: 24 tines 126-2143
Fits models:
23515 21" Single Hydraulic Aerator (Takes 36 tines)
23516 18" Mechanical Aerator (Takes 24 tines)
29517 24" Stand-On Aerator (Takes 36 tines)
29519 30 Stand-On Aerator (Takes 48 tines)

Price: \$189.95
Single 126-2143 Price: \$9.99 ea.

Order Number: 138-0758



Soil Cultivator Pack Kit

Includes: All rotor blades required to update your machine.
10 left blades of 114-7800, 10 right blades of 114-7801
Fits models:
23102 Soil Cultivator, Compact Utility Loader

Price: \$569.95
Single 114-7800 Price: \$30.95 ea.
Single 114-7801 Price: \$30.95 ea.

Order Number: 138-0759



40" Tiller Tine Pack Kit

Includes: All tines required to update your machine.
18 left blades of 104-2044, 18 right blades of 104-2043
Fits models:
22445 45" Tiller, Compact Utility Loader

Price: \$539.95
Single 104-2044 Price: \$16.95 ea.
Single 104-2043 Price: \$16.95 ea.

Order Number: 138-0760



| Order Number | Description | Price Each | 12 or more |
|--------------|-----------------------------------|------------|--------------|
| 114-4713 | HYPRO-OIL 500 Hydro Oil 1 Qt. | \$13.99 | \$12.99 each |
| 114-4714 | HYPRO-OIL 500 Hydro Oil 1 Gal. | \$49.99 | |

Toro Dingo Tire and Rim Assemblies

Left Hand Rim & Tire Assembly

Fits Dingo Models: 22300, 22302, 22303,
22304, 22305, 22311, 22312, 22317, 22318
Includes Rim and Tire, replaces 98-2747
Order Number 144-2575 Price: \$242.95



Right Hand Rim & Tire Assembly

Fits Dingo Models: 22300, 22302, 22303, 22305,
22311, 22312, 22317, 22318
Includes Rim and Tire, Replaces 99-1447
Order Number 144-2574 Price: \$242.95



Call 800 305 9255 | Original & Aftermarket Parts

SEE WHY OVER 68,000 LANDSCAPERS CHOOSE PROPARTS

ProParts Direct
288 N. Broadway
Salem, NH 03079



Z-SPRAY PARTS ARE NOW IN-STOCK!

See Page 54-55

Toro Dingo Wheel Motors
Starting at \$1,699.95

Order Number 98-2767



WALKER HYDRO STATIC DRIVES

Used on Walker MT, MD and MS tractors

Starting at \$1,199.00



5025/5026

Follow Us On   For Specials and giveaways through out the year

SHOP ONLINE AT
www.propartsdirect.net

Prices subject to change without notice. Not responsible for mis-print or typographical errors. Current catalog prices supersede all other. Printed prices expire on 7/31/2025

Visit Us Online at www.propartsdirect.net
Create an account and enjoy ProParts pricing all year long!



Need Help? Call us at 800 305 9255

RIGHT PART, RIGHT PRICE EVERY TIME

SHOP US FOR THESE MAJOR BRANDS . . . AND MORE!



ProParts Direct Catalog is for the landscape community. For old & new landscapers we pride ourselves on fostering the growth of this community. We thank @mowerman1s on his submission of photos for this years catalog. @mowerman1s is in no way a paid sponsor and we encourage you to follow his channel and others who have used our services.



Now for Some Of the Details

SHOP ONLINE 24 HOURS A DAY,
7 DAYS A WEEK

Visit: www.propartsdirect.net

Visit our website and place your orders in the shopping cart. All online orders are shipped within 3 to 5 business days. Online orders are confirmed via e-mail.

See Website for:

Venmo
Apple Pay
Google Pay
Samsung pay



BUY NOW & PAY LATER
CHOOSE AFFIRM AT CHECKOUT FOR ANY PURCHASE TO PAY OVER TIME IN FIXED MONTHLY INSTALLMENTS

ProParts Direct can save you money on high quality replacement parts and engines, keeping you and your crew running!

We have been serving the professional lawn industry for over 85 years.

FACTORY TRAINED, AND READY TO HELP

Our Call Center is staffed with over 50 years of experience. We are courteous & hands-on experts are ready to solve your parts questions.

Shipping Policy

Most Items will be shipped at regular shipping rates. Please see website for details.

Heavy or oversized items have special shipping rates – refer to our Shipping Oversized Items / Freight policy online. You can also email us with your address & telephone number and the items you are looking to order, so we can contact you with an accurate quote on Freight items.

Call us with questions regarding shipping at 800 305 9255