



SNOWBLOWER CHUTE CONTROL KIT, P/N 6623-4

DESCRIPTION: This kit allows the operator to adjust the chute angle and chute direction of the H17 snowblower when using the A33 cab.

INSTRUCTIONS:

1. Install the chute control decal (#19) on the switch mount bracket (#7). Attach the switch mount bracket to the forward speed control (FSC) lever and mount the three toggle switches (P/N 6623) to the switch mount bracket as shown in Figure "M". If mounting holes are not available on the FSC lever, mark and drill two 3/16" holes as shown in Figure "A". Measure up 1-3/8" from the bend in the FSC lever for the lower hole. With the lower hole marked and drilled, use the switch mount bracket (P/N 6623-18) to locate the upper hole.

NOTE: If the tractor has the earlier ball-style FSC, measure up 2-1/2" from the bend in the FSC lever for the lower hole.

2. Using the dimensions from Figures "B" and "C", mark and drill a 3/16" hole in the locations shown. With the holes drilled, fasten two half clamps (P/N 5835-2, #15) to the body as shown in Figure "E".

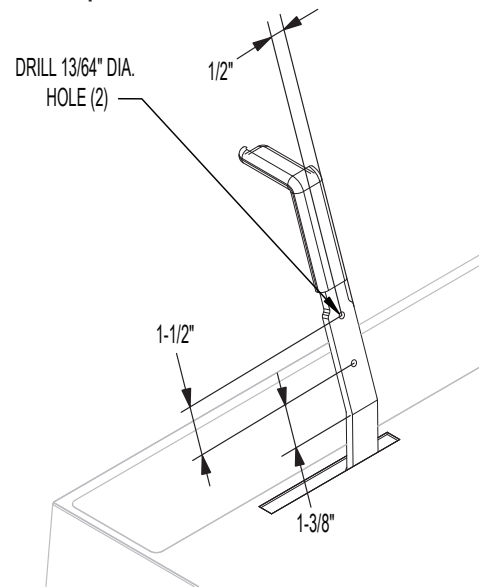


Figure "A"

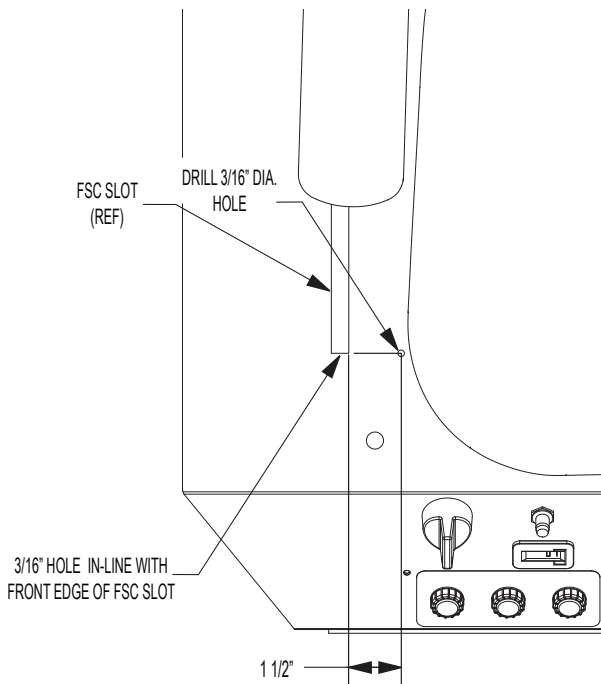


Figure "B"

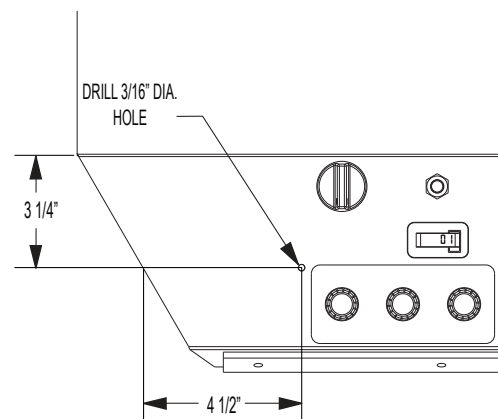


Figure "C"

- Using the dimensions shown in Figure “D”, mark and drill a 3/16” hole in the locations shown, and grind a small amount of paint from around the existing hole.

NOTE: This is done from the bottom of the chassis. With the holes drilled, fasten four half clamps (P/N 5835-2, #15) to the chassis as shown in Figure “E”. Leave the bolt through the existing hole loose to be tightened in step 5.

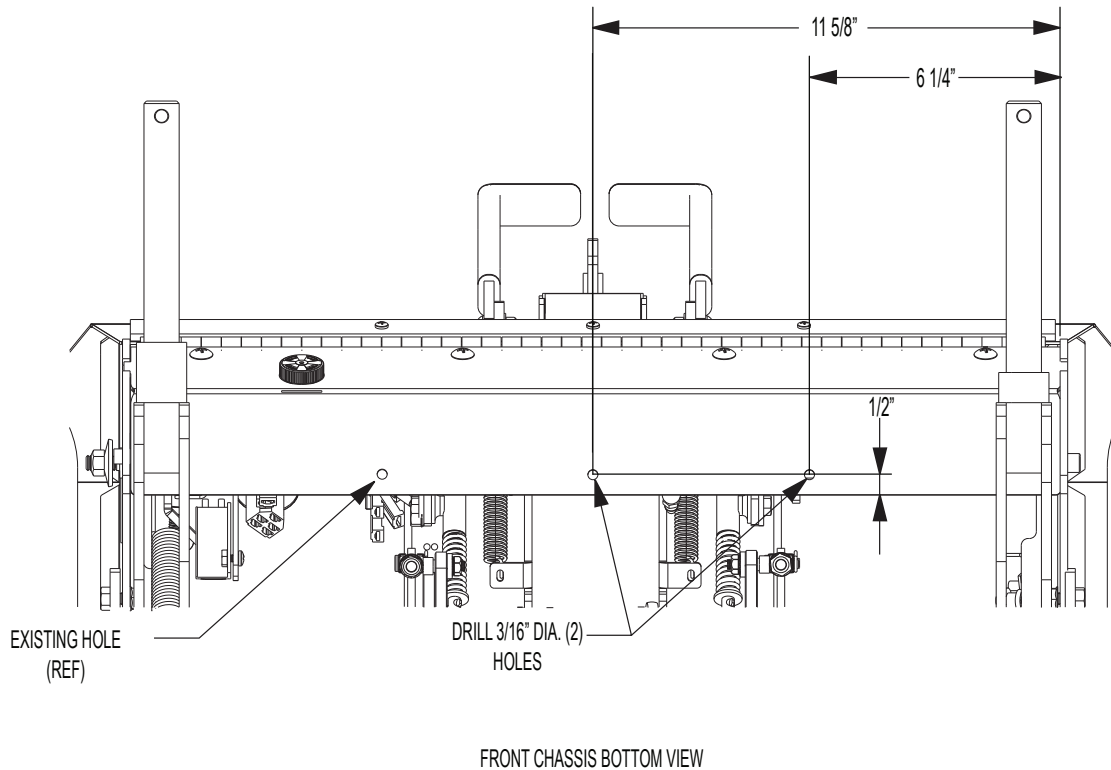


Figure “D”

- Plug the 3 switch implement harness (P/N 6623-12) into the three toggle switches as shown in Figure “M”.

NOTE: Plug #1 has blue, yellow, purple, red and green wires. Plug #2 has yellow, red, purple and green wires. Plug #3 has red, white, purple and green wires. Route and attach the implement harness to the 5 half clamps on the tractor using the included cable ties (P/N 5975-3) as shown in Figure “E”. Route the harness behind the FSC lever and be sure to leave enough slack in the harness to allow the FSC lever to move from full forward to neutral.

- Plug the power/ground tractor pigtail (P/N 6623-15) into the implement harness and connect as shown in Figure “E”. To do this, unplug the existing single purple wire from the load side (bottom) of the circuit breaker and plug the piggyback terminal (P/N 5995-5) onto the circuit breaker. Plug the existing purple wire onto the piggyback terminal. Plug the red wire from the pigtail onto the piggyback terminal and connect the ring terminal on the green wire to the chassis using the bolt left loose in step 3, as shown in Figure “E”.
- Remove the existing chute adjustment knobs and discard. Attach the chute template to the chute as shown in Figure “F”. Drill the two 1/8” holes then remove the template and drill holes to 1/4”. Be sure to repeat this procedure for the opposite side of the chute. Using the included hardware, attach the chute slot covers (P/N 6623-20) to the chute as shown in Figure “G”.

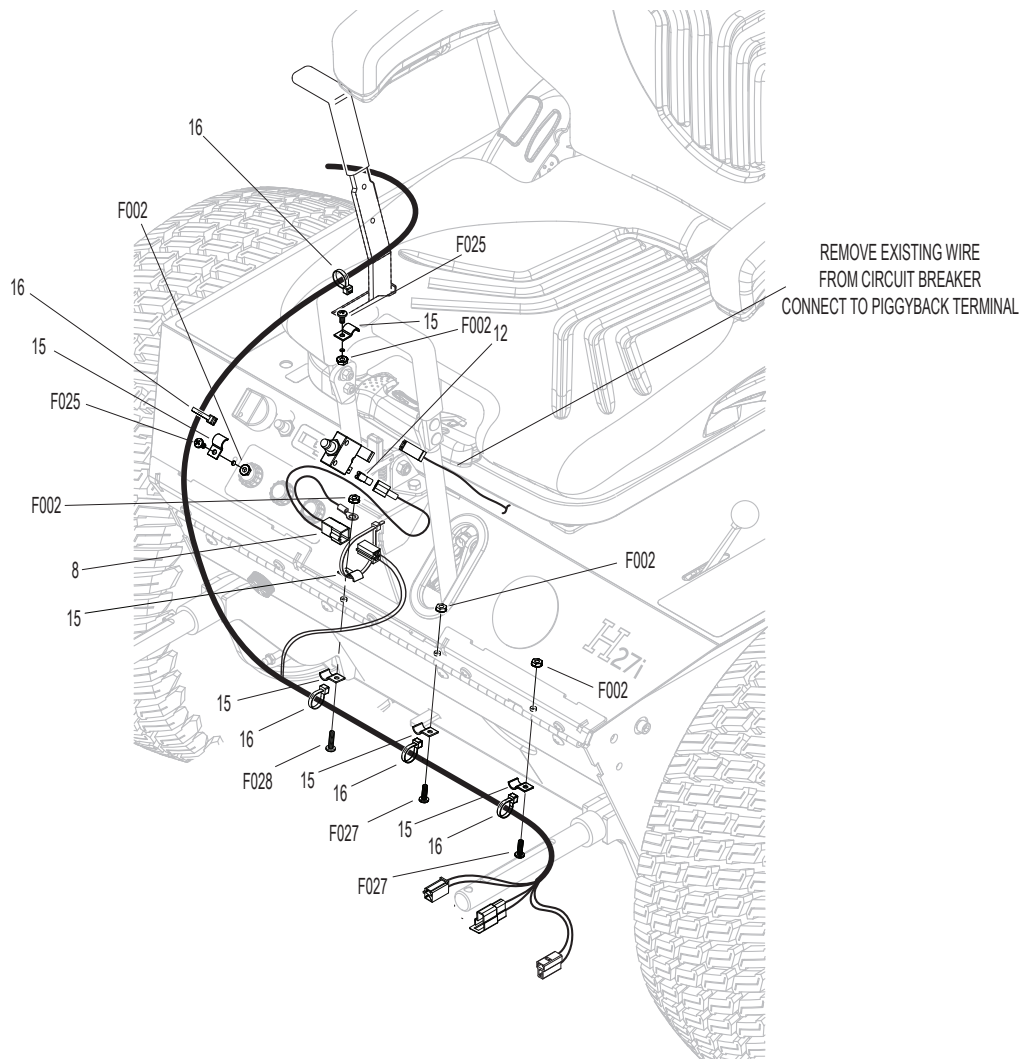


Figure "E"

DRILL 1/8" DIA. HOLES. REMOVE TEMPLATE
DRILL TO 1/4" DIA. REPEAT FOR OPPOSITE SIDE

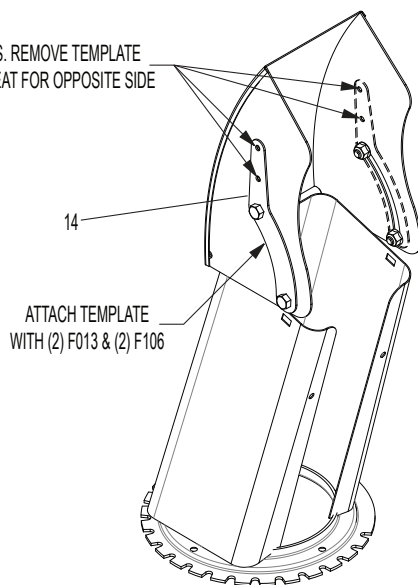


Figure "F"

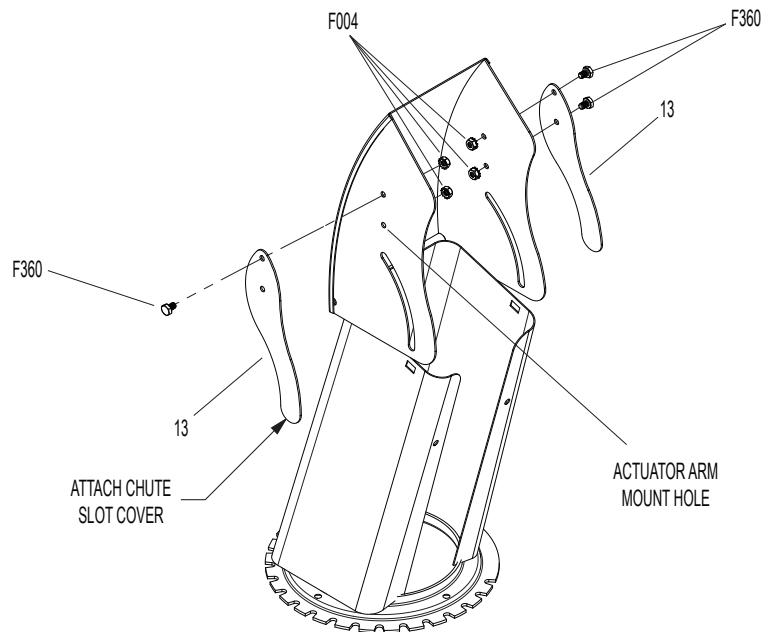
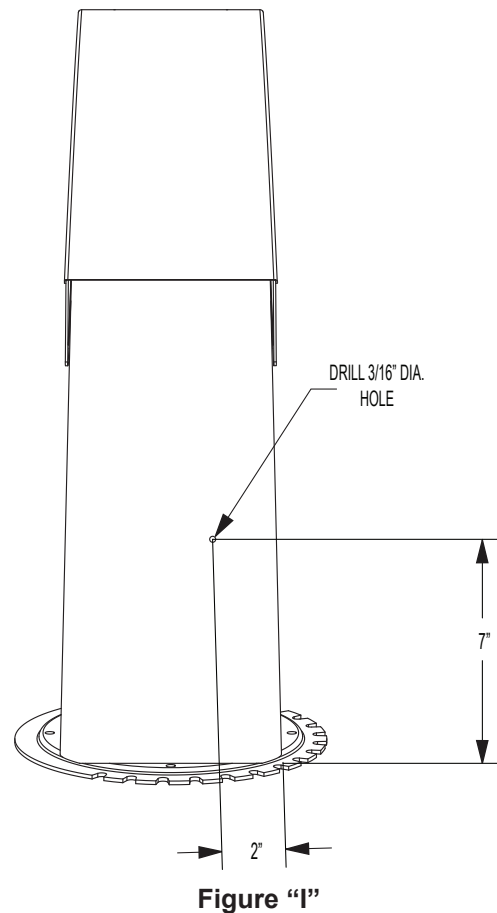
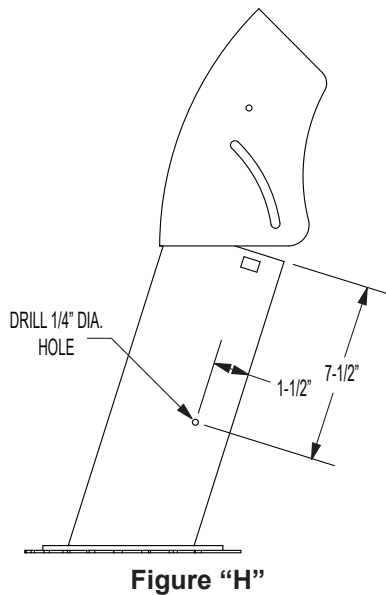


Figure "G"

7. Using the dimensions shown in Figure “H”, mark and drill a 1/4” hole on the side of the chute. Using the dimensions shown in Figure “I”, mark and drill a 3/16” hole on the backside of the chute. Fasten a half clamp (P/N 5835-2) to the back of the chute as shown in Figure “L”.



8. Remove the existing rear bushing support as shown in Figure “J”. Remove the black plastic bushing from the rear bushing support, and install into the new motor mount (P/N 6623-17). Remove the worm gear and ream the end using a 9/16 drill to remove any burrs. This will allow the motor shaft bushing (P/N 6623-19) to fit inside the worm gear properly. Reinstall the worm gear and new motor mount (P/N 6623-17) as shown in Figure “K”.
9. Place the motor shaft bushing (P/N 6623-19) onto the shaft of the actuator motor (P/N 6623-13), making sure the holes in the bushing line up with the hole in the actuator motor shaft. Slide the actuator motor shaft into the end of the worm gear and center the holes in the bushing and motor shaft in the hole in the worm gear. If spacers are needed between the motor mount and actuator motor to line up the hole in the actuator motor shaft with the worm gear, use the included washers (P/N’s F136 and F120) as necessary as shown in Figure “K”. With the holes aligned, install the worm gear drive bolt through the actuator motor shaft as shown using the included hardware (P/N’s F487 and F023).
10. Using the included hardware and spacers (P/N 8608-11), mount the linear actuator (P/N 6623-14) to the chute as shown in Figure “M”. Plug the chute control adapter harness (P/N 6623-11) into the linear actuator and fasten the harness to the half clamp on the back of the chute as shown in Figure “L”. Plug the chute adapter harness into the actuator motor and tie the excess wire harness to the actuator motor as shown in Figure “L”. Be sure to leave enough slack in the harness to allow the chute to rotate full left and full right.

- With the A17 snowblower installed onto the H19 hitch, plug the implement harness from the tractor into the adapter harness on the snowblower and fasten any loose part of the harness to the hitch using the supplied cable ties (P/N 5975-3).

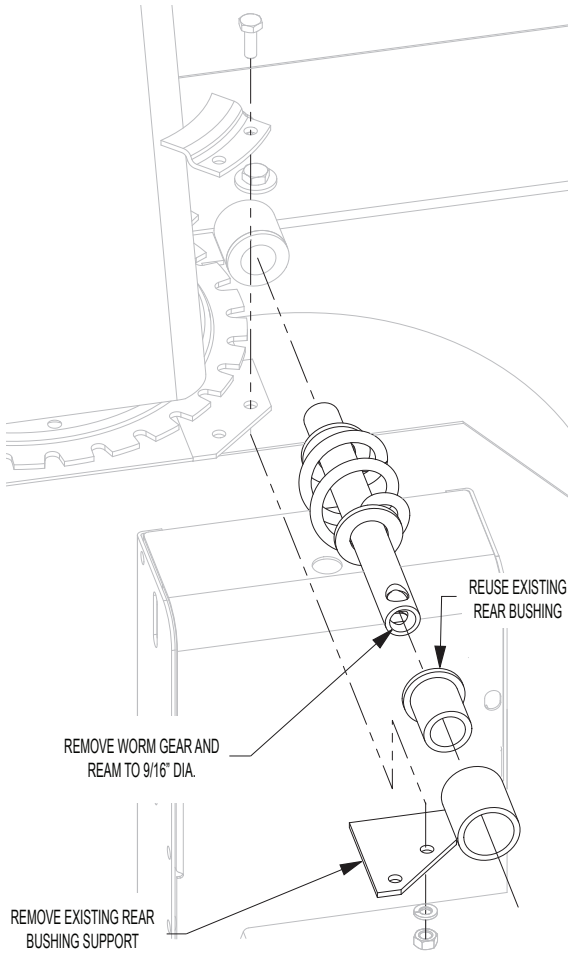


Figure "J"

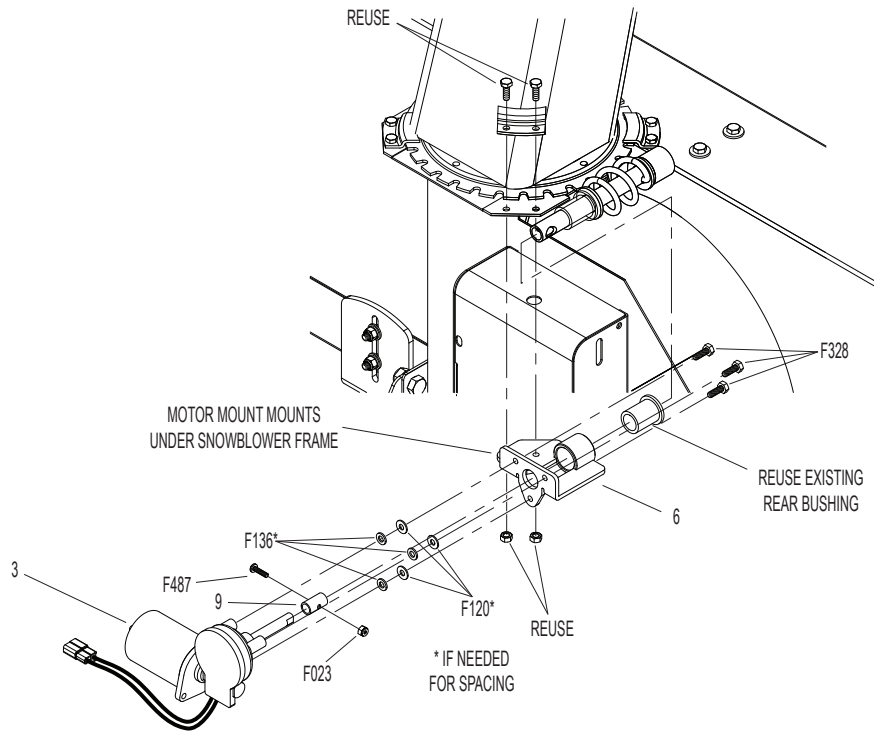


Figure "K"

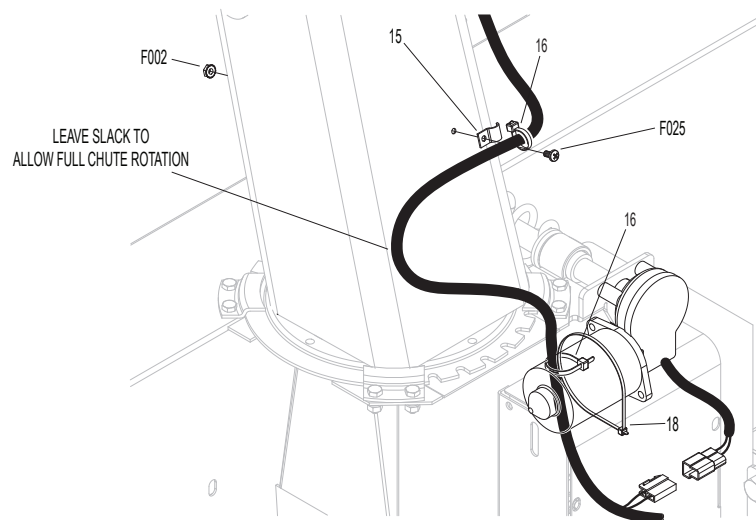


Figure "L"

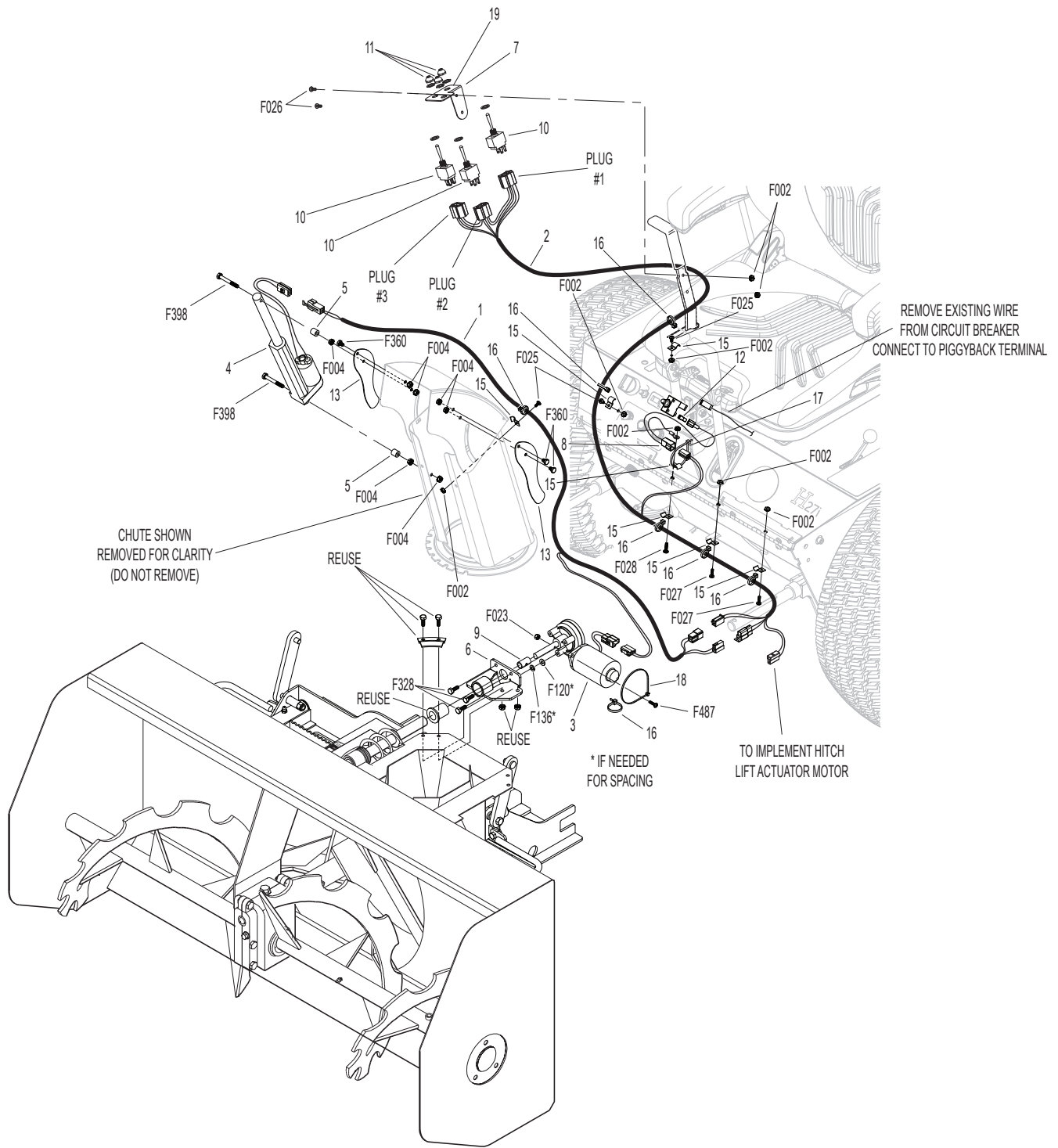


Figure "M"

ITEM NO.	PART NO.	DESCRIPTION	QTY REQ'D
1	6623-11	Adapter Harness Chute Control	1
2	6623-12	3 Switch Implement Harness	1
3	6623-16	Actuator Motor, RH (12volt)	1
4	6623-14	Linear Actuator (4.00)	1
5	8608-11	Spacer (1/4" x 1/2" x 1/2")	2
6	6623-17	Motor Mount	1
7	6623-18	Switch Mount	1
8	6623-15	Power/Ground Tractor Pigtail	1
9	6623-19	Motor Shaft Bushing	1
10	6623	Toggle Switch	3
11	6623-1	Switch Boot	3
12	5995-5	Piggyback Terminal	1
13	6623-20	Snowblower Chute Slot Cover	2
14	NS	Snowblower Chute Template	1
15	5835-2	Half Clamp	7
16	5975-3	Cable Tie (50# x 7")	10
17	5975-1	Cable Tie (18# x 3-3/4")	1
18	5975-7	Cable Tie (50# x 11")	1
19	6632-2	Decal, Chute Control	1
F002	F002	10-24 Keps Nut	8
F004	F004	1/4-20 Keps Nut	7
F013	F013	3/8-16 Whiz Locknut	2
F023	F023	10-24 ESNA Nut	1
F025	F025	10-24 x 3/8 PPHMS	3
F026	F026	10-24 x 1/2 PPHMS	2
F027	F027	10-24 x 5/8 PPHMS	2
F028	F028	10-24 x 3/4 PPHMS	1
F106	F106	3/8-16 x 5/8 Hex Bolt	2
F120	F120	AN960416 Washer	6*
F136	F136	AN960C416L Washer	3*
F328	F328	M6 x 1.0 x 16 Hex Bolt	3
F360	F360	1/4-20 x 3/8 Hex Bolt	3
F398	F398	1/4-20 x 2 Hex Bolt	2
F487	F487	10-24 x 7/8 PPHMS Stainless	1

* If Needed

| B