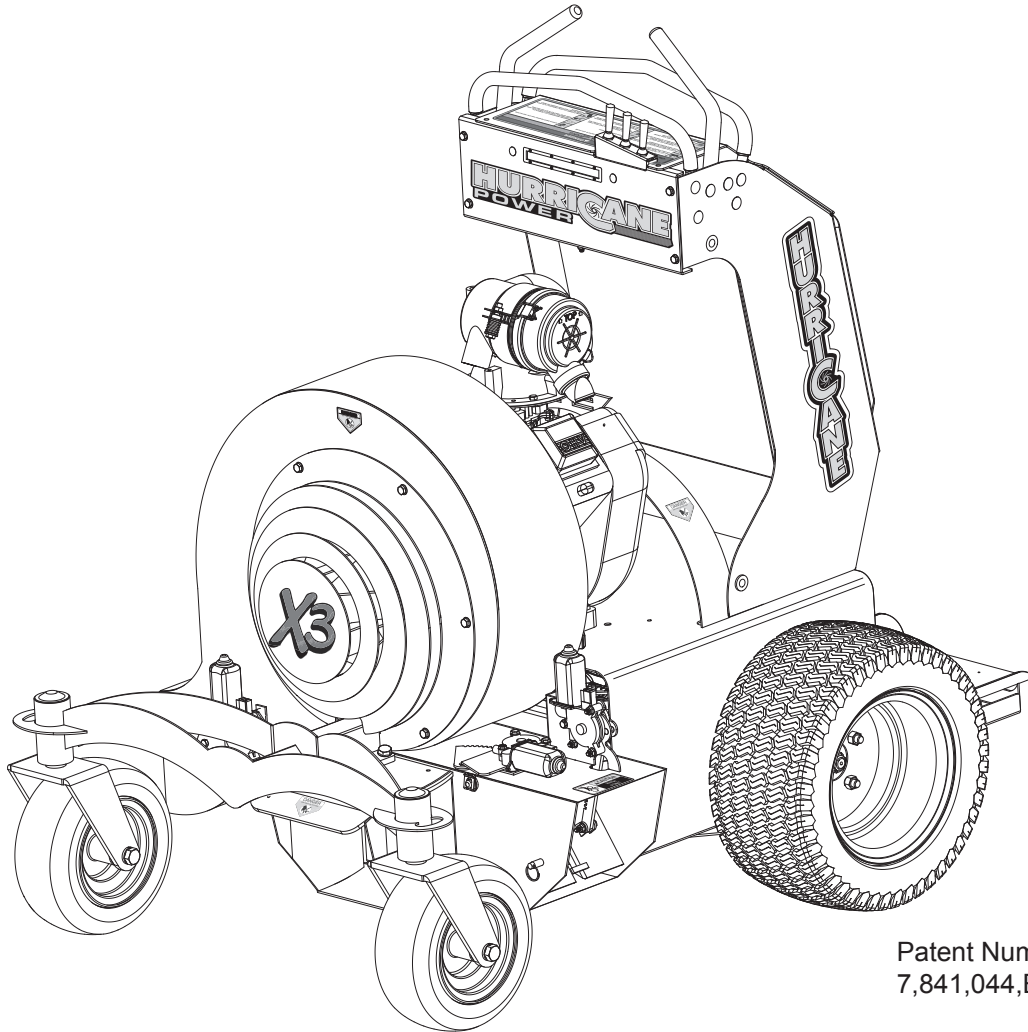


HURRICANE POWER

Commercial Debris Blower

Parts Manual



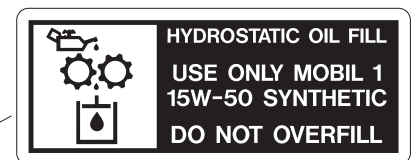
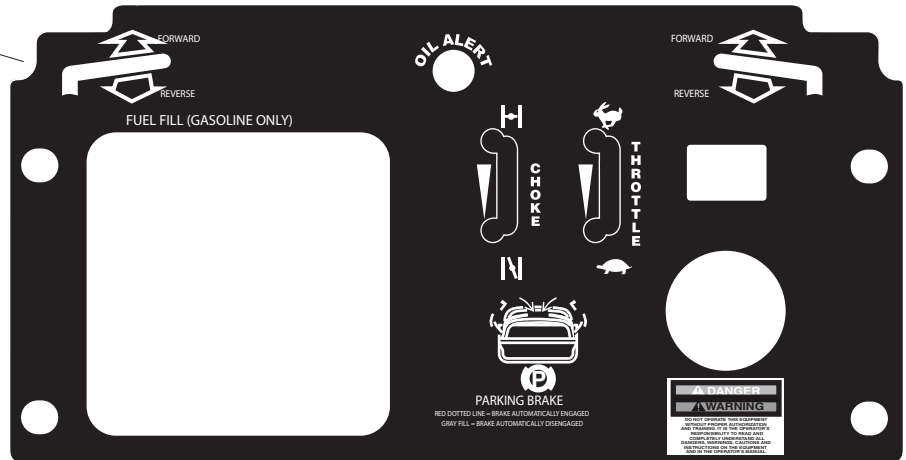
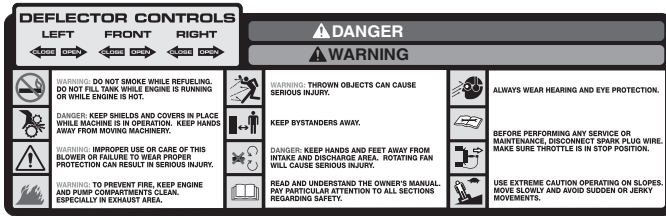
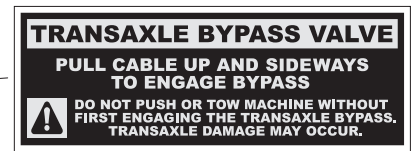
Patent Number
7,841,044,B1

DECALS

Decals

Hurricane Power

	Part Number	Description	Quantity		Part Number	Description	Quantity
1	425-4201	Front Logo Decal	1	8	425-4209	Hydro Decal	1
2	X3-4212	Data Plate	1	9	425-4206	Danger Decal	5
3	X3-4210	Top Dash Decal	1	10	425-4204	Made in the USA Decal	1
4	425-4205	Hot Decal	1	11	425-4211	Dash Controls Decal	1
5	425-4202	Left Logo Decal	1	12	314-17-42100	Trans Bypass	2
	425-4203	Right Logo Decal	1	13	X3-4213	Emergency Brake Release	1
6	X3	Safety Cover Decal	1	14	X3-16-4202	Left/Right Upright Decal	2
7	425-4208	Pinch Decal	2	15	X3-16-4201	Front Logo Decal	1



CHASSIS COMPONENTS

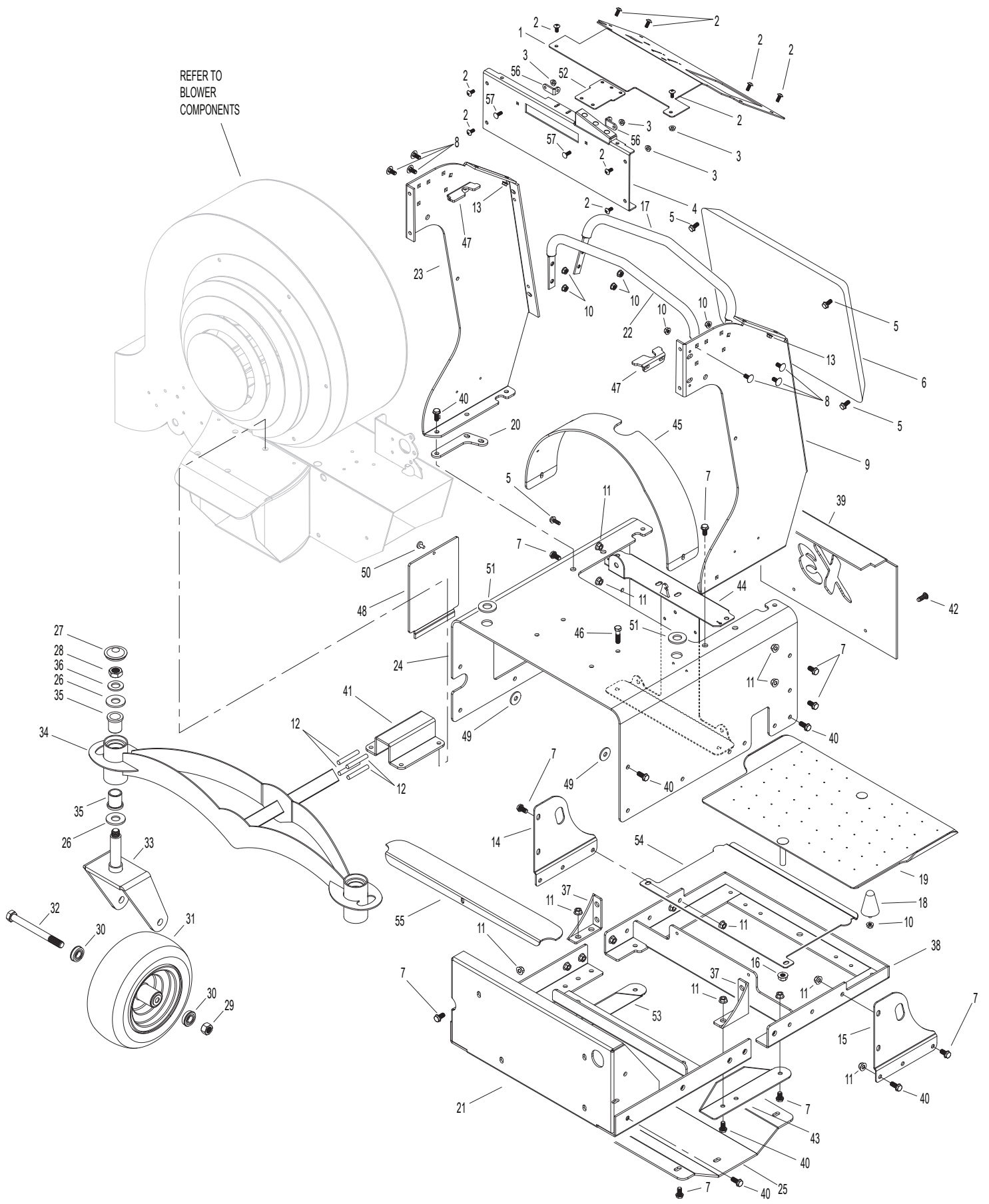
Chassis

Hurricane Power

Part Number	Description	Quantity	Part Number	Description	Quantity		
1	X3-1452	Dash	1	32	15153	Bolt 5/8-11 x 6-1/2	2
2	15102	1/4-20 x 3/4 Flange Bolt	10	33	109-10-2010	Caster Fork	2
3	15101	1/4-20 Flange Nut	12		109-10-T2010	Caster Fork	2*
4	ZF1751	Dash Front Panel	1	34	XF17029	Front End Frame Assembly	1
	ZFT1751	Dash Front Panel	1*		XFT17029	Front End Frame Assembly	1*
5	15108	5/16-18 x 3/4 Flange Bolt	6	35	0117-162024	Plastic Bushing	4
6	112-18-1812	Pad	1	36	15137	3/4 Machine Bushing	2
7	15112	3/8-16 x 3/4 Flange Bolt	28	37	X3-14-3017	Hydro 90° Bracket	2
8	15109	5/16-18 x 3/4 Carriage Bolt	12	38	ZF1750	Rear Chassis Frame	1
9	XF1733	Left Upright	1	39	X3-1444	Toe Kick	1
	XFT1733	Left Upright	1*		X3-T1444	Toe Kick	1*
10	15107	5/16-18 Flange Nut	18	40	15062	3/8-16 x 1 Flange Bolt	14
11	15111	3/8-16 Flange Nut	66	41	16-2002	Front End Torsion Plate	1
12	16-2003	Rubber Cord (Set of 4)	1	42	15157	5/16-18 x 1/2 Self Tapping Screw	2
13	15061	1/4-20 Riv-Nut	2				
14	X310-2006	Right Side Plate Tie Down	1	43	XF1743L	Bottom Chassis Bracket Left	1
	X310-T2006	Right Side Plate Tie Down	1*	44	ZF1730	Hydro I-Beam	1
15	X310-2018	Left Side Plate Tie Down	1	45	XF1720	Belt Guard	1
	X310-T2018	Left Side Plate Tie Down	1*		XFT1720	Belt Guard	1*
16	15056	1/2-13 Nylock Jamb Nut	1	46	15074	3/8-16 x 1-3/4 Flange Hex Bolt	4
17	16-30502	Reverse Stop	1				
	16-T30502	Reverse Stop	1*	47	X3-1440	Neutral Centering Bracket	2
18	425-16-11100	Rubber Mount	4				
19	X310-2011	Foot Pad	1	48	X3-1454	Battery Door	1
20	XF1753	Upper I-Beam Mount	2		X3-T1454	Battery Door	1*
21	XF1749	Front Chassis Frame	1	49	X3-1455	Base Box Spacer	2
22	16-30501	Forward Stop	1	50	15313	1/4-20 x 1/2 Cap Screw With Plastic Knob	1
	16-T30501	Forward Stop	1*				
23	X3-1447	Right Upright	1	51	5187	Rubber Grommet	2
	XFT1732	Right Upright	1*	52	ZF17042	Relay Mount Bracket	1
24	XF17007	Motor Box	1	53	XF1743R	Bottom Chassis Bracket Right	1
	XFT17007	Motor Box	1*				
25	X3-1445	Skid Plate	1	54	ZF1445	Debris Guard	1
26	15136	1 x 10 Gauge Machine Bushing	4	55	ZF1745	Forward Debris Guard	1
				56	ZF17403	"L" Headlight Brake	2
27	15161	Plastic Grease Cap	2	57	17109	1/4-20 x 3/4 Carriage Bolt	4
28	15139	3/4-10 Nylon Jamb Nut	2				
29	15581	5/8-11 Nylock Nut	2				
30	109-17-7011	Caster Bearings	4				
31	109-17-7012	Caster Wheel & Tire	2				

* Please note the powder coat change. Serial Number 171102 and higher have textured powder coat.

CHASSIS COMPONENTS

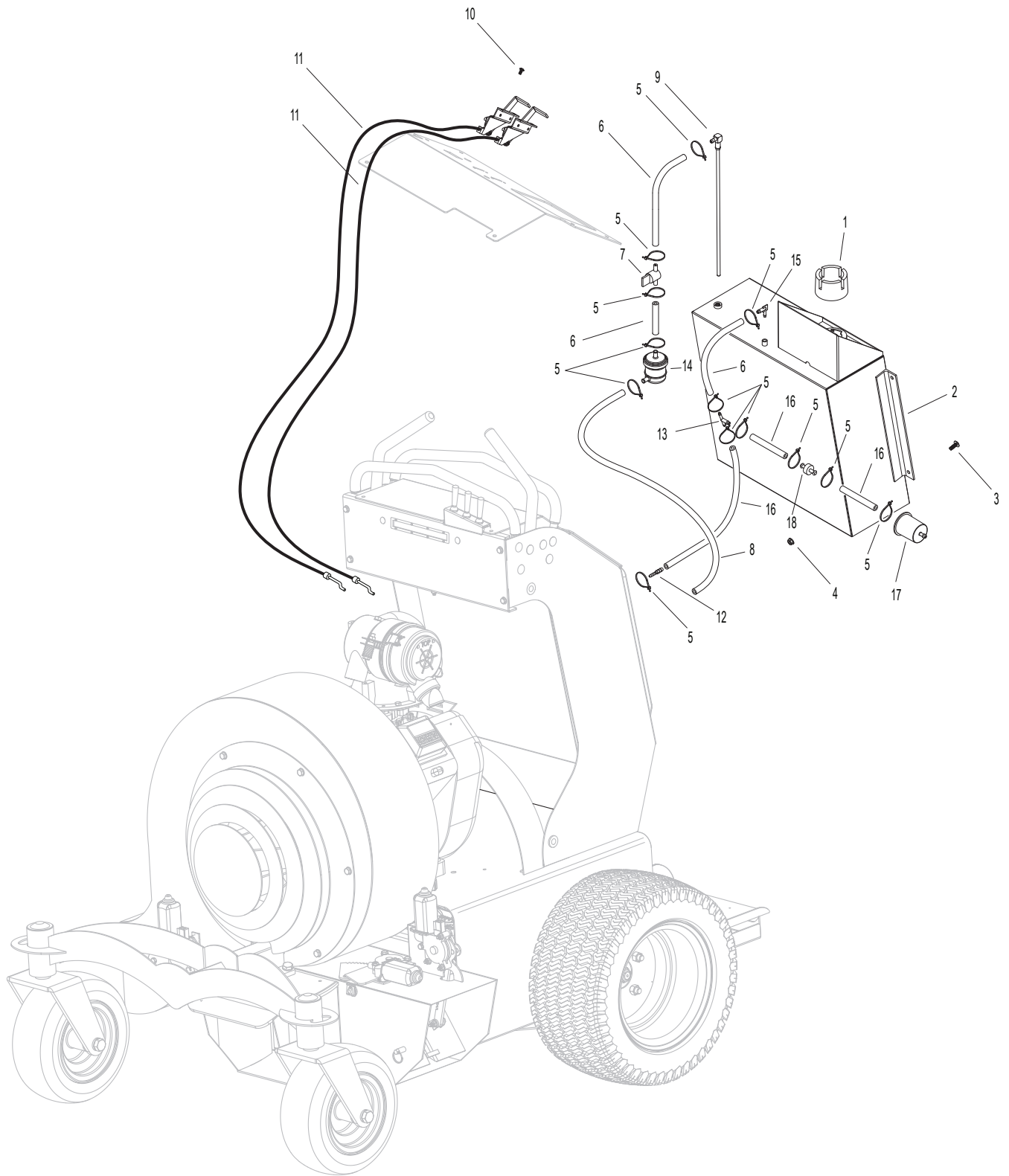


FUEL AND THROTTLE COMPONENTS

	Part Number	Description	Quantity		Part Number	Description	Quantity
1	1101-73601	Fuel Cap	1	11	425-1041-76010	Throttle/Choke Cable	2
2	ZF15034	Fuel Tank Gloss	1	12	110-17-5407	1/4 x 3/16 Reducer	1
	ZFT15034	Fuel Tank	1*	13	110-17-5406	1/4 Tee	1
3	15091	1/4-20 x 3/4 FPHMS	4	14	110-17-5403	Fuel Filter	1
4	15101	1/4-20 Flange Nut	4	15	X3-TL522	Plastic Elbow	1
5	N/A	Zipties	14	16	ZP15036	Fuel Line	3
6	ZP15039	Fuel Line	4	17	110-17-5404	Emissions Filter	1
7	1101-73805	Ball Valve Fuel Shutoff	1	18	110-17-5405	Check Valve	1
8	ZP15054	Fuel Line (5")	1				
9	1101-73811	Fuel Pickup	1				
10	XP15090	Phillips, Self Drilling	4				

* Please note the powder coat change. Serial Number 171102 and higher have textured powder coat.

FUEL AND THROTTLE COMPONENTS



HYDROSTATIC COMPONENTS

Hydro

Hurricane Power

Part Number	Description	Quantity	Part Number	Description	Quantity		
1	139530	Control Grip 9-1/2"	2	29	15072	3/8-16 x 9-3/8 Hex Bolt	1
2	15162	3/32" Cotter Pin	4	30	X3-1436	Hydro Spacer Tube	1
3	14-40-2011	Control Handle	2	31	15060	1/2 x 2-1/2 Clevis Pin	2
4	15140	1/4-28 Nylock Nut	4	32	16127	#98 Idler Spring	1
5	15315	1/2 x 4-1/2 Clevis Pin	2	33	15303	1/2-13 x 2 Hex Bolt	2
6	0117-081216	Plastic Bushings	6	34	17-4101	Idler Pulley	1
7	X3-1437	Lower Control Switch	1	35	425-52114	Hydro Oil Filter	2
		Bracket Right		36	15046	1/2-13 Flange Nut	1
8	X3-1438	Lower Control Switch	1	37	ZF15052	Idler Arm	1
		Bracket Left		38	15101	1/4-20 Flange Nut	8
9	15081	1/4-28 Right Hand Nut	2	39	15047	1/2-13 Nylock Nut	1
10	2500-2100	1/4-28 x 21" Rod	2	40	107-17-3213	5/16-18 Set Screw	2
11	15086	1/4-28 Left Hand Nut	2	41	15054	1/4 x 1-1/4 Key Stock	1
12	103-17-4635	1/4-28 x 3" Turnbuckle	2	42	XF17-3211	Drive Pulley	1
13	ZP16054	4" Control Rod	2	43	XP-A4545	Drive Belt	1
14	106-17-4637	1/4-28 Ball Joint LH	2	44	XP17020	Engine - Vanguard 23 HP	1
15	X3-1520	Transmission Control Arm	2			(Includes Muffler)	
16	15107	5/16-18 Flange Nut	6	45	HU002	Hydro Fitting	2
17	17110	5/16-24 x 2" Set Screw	4	46	103-17-4633	1/4-28 Right Hand	2
18	103-17-4429	Ball Stud	4			90 Knuckle	
19	103-17-4431	Dampener Clip	4	47	XP17010	Vanguard 23HP Muffler	1
20	425-103-174430	Dampener	2	48	XP17011	Manifold	1
21	ZF15048	Hydro Tank Bracket	1	49	X3-72123ZT	Fan Pulley Kit	2
		(Not Shown)		50	3A7C-1XXX	Right Hydro Pump	1
22	15102	1/4-20 x 3/4 Flange Bolt	8	51	3A7B-1XXX	Left Hydro Pump	1
23	ZP15047	Hydro Tank	2	52	X3-14-7012	22 x 11-10 Drive	2
24	15083	Oetiker Clamp	4			Tire and Rim	
25	X3-17050	Hydro Hose	2	53	15088	1/2-20 Lug Nut	8
26	X3-14-14	Hydro Neutral Release	2	54	XF1744	Thin Spacer Plate	1
		Cable		55	XF1745	Thick Spacer Plate	2
27	15111	3/8-16 Flange Nut	11				
28	15087	3/8-16 x 2-1/2 Flange Bolt	7				

HYDROSTATIC COMPONENTS

REFER TO CHASSIS COMPONENTS

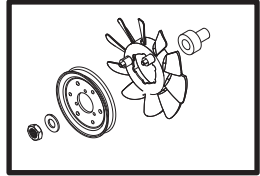
REFER TO ELECTRICAL COMPONENTS

REFER TO ELECTRICAL COMPONENTS

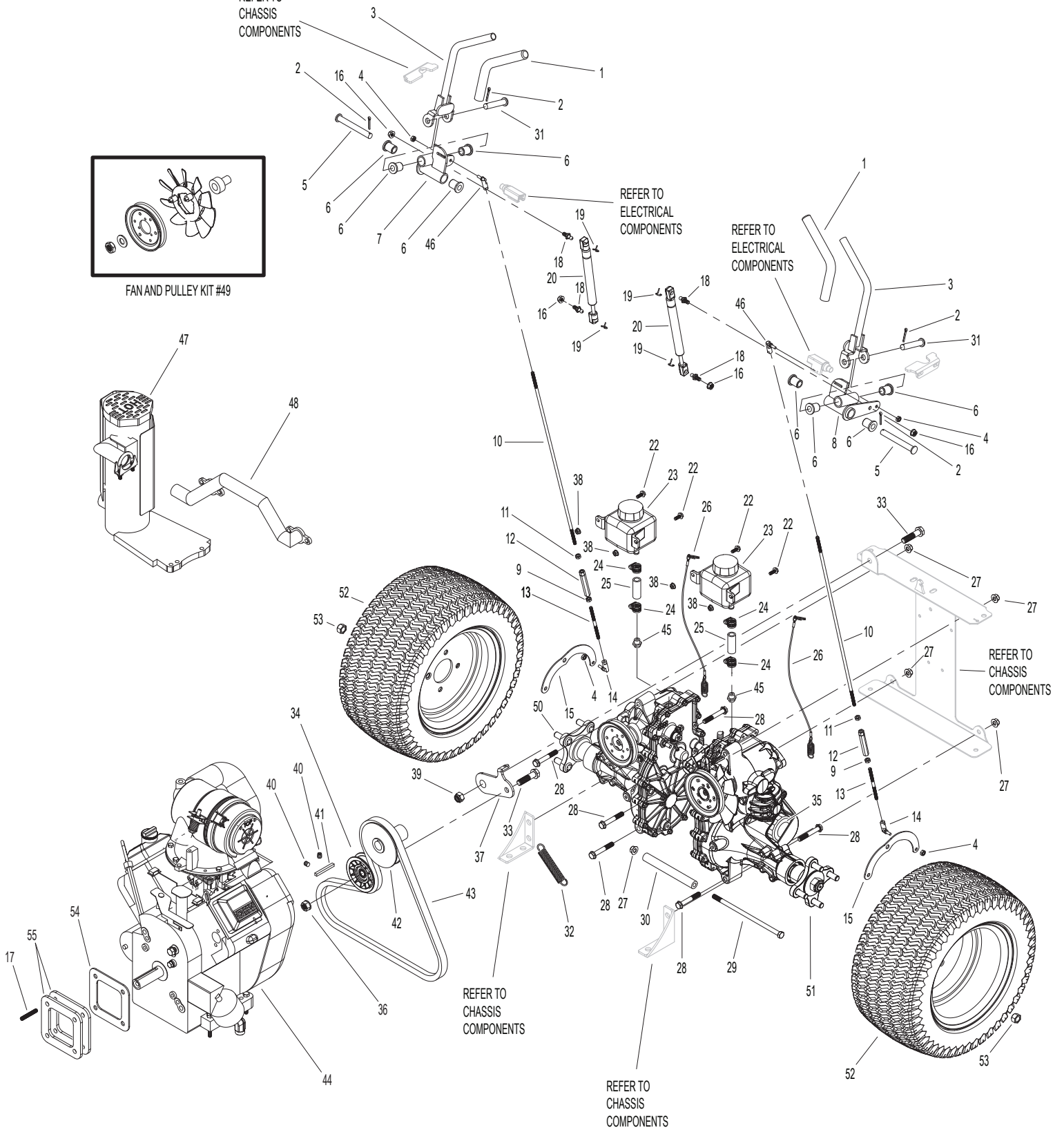
REFER TO CHASSIS COMPONENTS

REFER TO CHASSIS COMPONENTS

REFER TO CHASSIS COMPONENTS



FAN AND PULLEY KIT #49



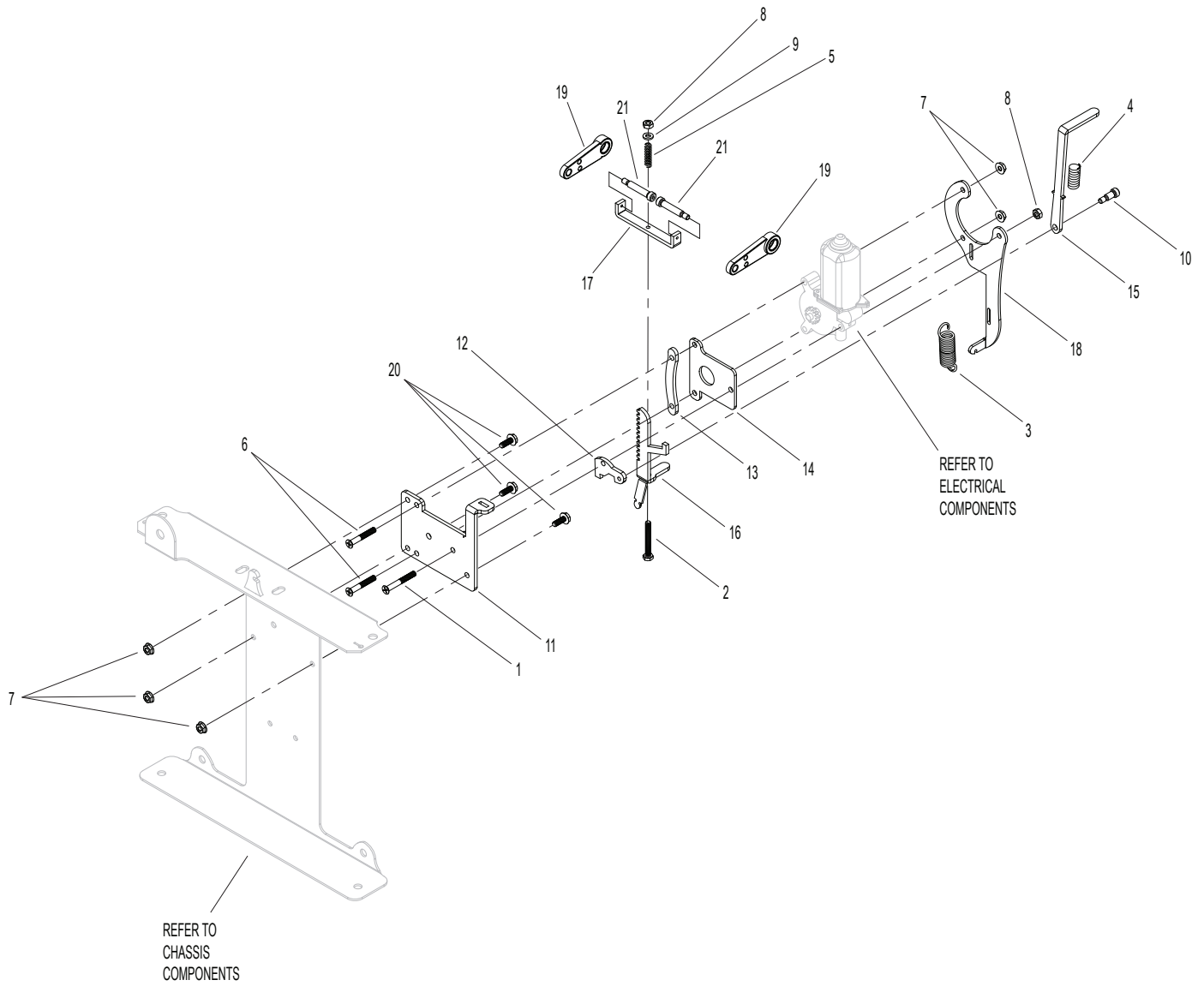
BRAKE ASSEMBLIES

Brakes

Hurricane Power

	Part Number	Description	Quantity		Part Number	Description	Quantity
1	15306	1/4-20 x 2 Phillips Head Machine	1	11	X3-1511	Brake Backing Plate	1
2	15307	1/4-20 x 2 Hex Bolt	1	12	X3-1512	Brake Cam	1
3	15128	#29 Extension Spring	1	13	X3-1513	Brake Spacer Bar	1
4	15308	#29 Compression Spring	1	14	X3-1514	Cam Cover Plate	1
5	15309	#21 Compression Spring	1	15	ZF15053	Brake Release Lever	1
6	15165	1/4-20 x 1-3/4 Phillips Head Machine Screw	2	16	X3-1516	Brake Gear Rack	1
7	15101	1/4-20 Flange Nut	5	17	X3-1517	Brake Lever Arm	1
8	15067	1/4-20 Nylock Nut	2	18	X3-1518	Switch Mounting Plate	1
9	15016	1/4 Flat Washer	1	19	X3-1519	Hydro Brake Arm	2
10	15310	5/16 x 1/2 Shoulder Bolt	1	20	15102	1/4-20 x 3/4 Flange Bolt	3
				21	153101	5/16 x 1-1/4 Shoulder Bolt	2

BRAKE ASSEMBLIES



BLOWER COMPONENTS

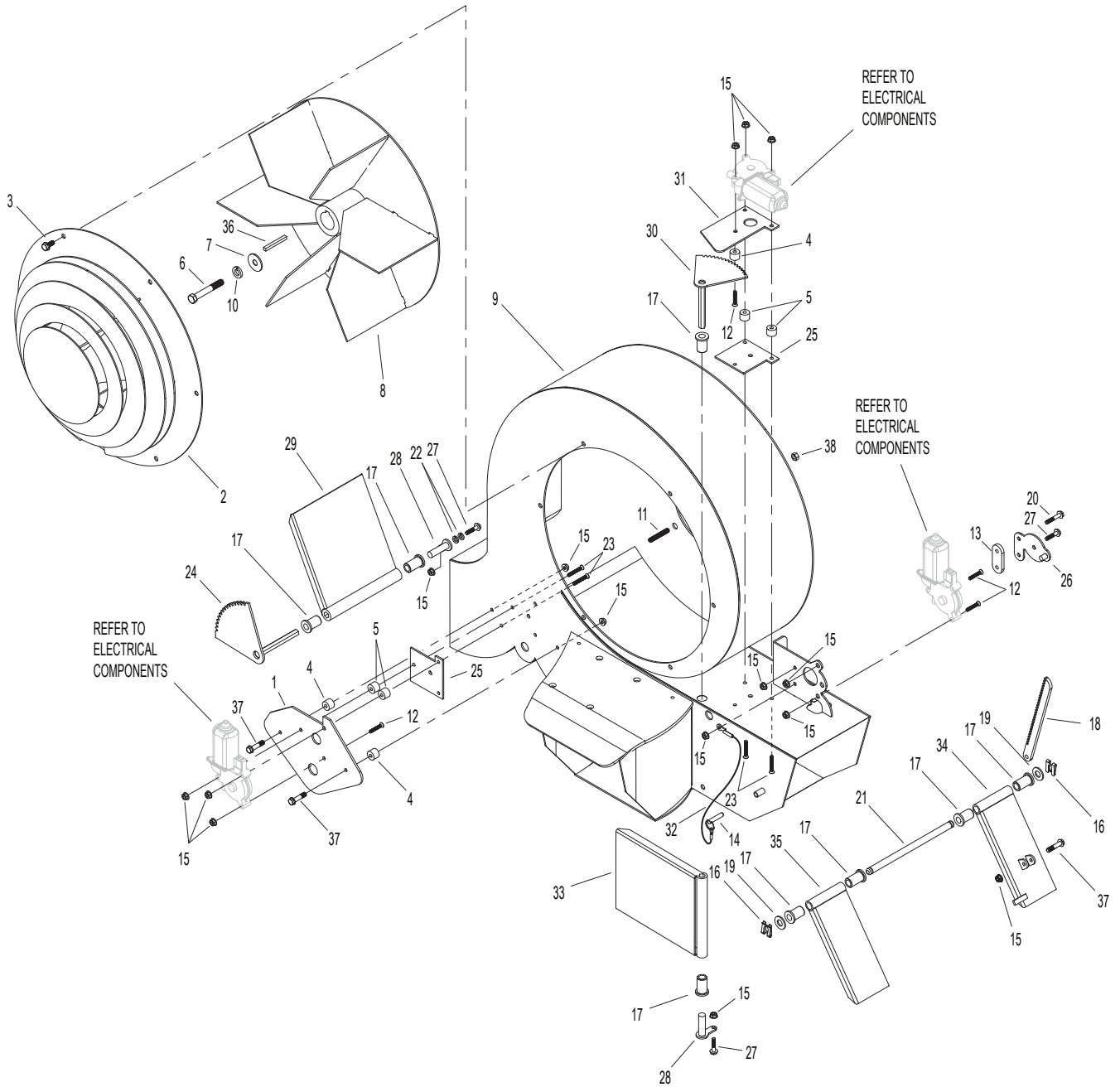
Blower

Hurricane Power

Part Number	Description	Quantity	Part Number	Description	Quantity		
1	XF1724	Right Deflector Cover Plate	1	21	XF1766	Deflector Support Rod	1
2	XF17015	Safety Cover	1	22	15080	1/4" Lock Washer	4
	XFT17015	Safety Cover	1*	23	15165	1/4-20 x 1-3/4	4
3	15108	5/16-18 x 3/4 Flange Bolt	6			Phillips Head Screw	
4	X310-2036	Motor Spacer	3	24	XF1739	Right Deflector Gear	1
5	15225 or 15164	Deflector Cover Spacer	4	25	X310-2052	Deflector Spacer Plate	2
6	17092	7/16-20 x 2 Hex Bolt	1	26	101-10-2028	Rack Keeper	1
7	17009	7/16 ID x 1-3/4 OD	1	27	15102	1/4-20 Flange Bolt	3
		Impeller Washer		28	X310-2044	Forward Deflector Pin	2
8	XF1737	1-1/8" Crankshaft	1	29	XF1741	Right Deflector	1
		Impeller		30	X310-2042	Forward Deflector Gear	1
9	XF17006	Blower Housing	1	31	X310-2043	Forward Deflector	1
	XFT17006	Blower Housing	1*			Motor Mount	
10	15098-1	5/8 Lockwasher	1	32	ZF15158	Deflector Lock Pin	1
11	17110	5/16-24 x 2" Set Screw	4			Retaining Cable	
12	15104	1/4-20 x 1-1/4 Phillips	4	33	XF1742	Forward Deflector	1
		Head Screw		34	XF1746	Left Power Deflector	1
13	101-16-2029	Rack Spacer	1	35	XF1747	Left Slave Deflector	1
14	15158	Deflector Lock Pin	1	36	17052	3/8 x 2-3/4 Key Stock	1
15	15101	1/4-20 Flange Nut	15	37	16102	1/4-20 x 1-1/4 Flange Bolt	3
16	101-17-6427	Safety Clip	2	38	XP17110	5/16-24 Serrated Nut	4
17	0117-081216	1/2 Plastic Bushing	8				
18	101-16-1821	Deflector Rack	1				
19	15124	1/2 SAE Washer	2				
20	15103	1/4-20 x 1-1/2 Flange Bolt	1				

* Please note the powder coat change. Serial Number 171102 and higher have textured powder coat.

BLOWER COMPONENTS



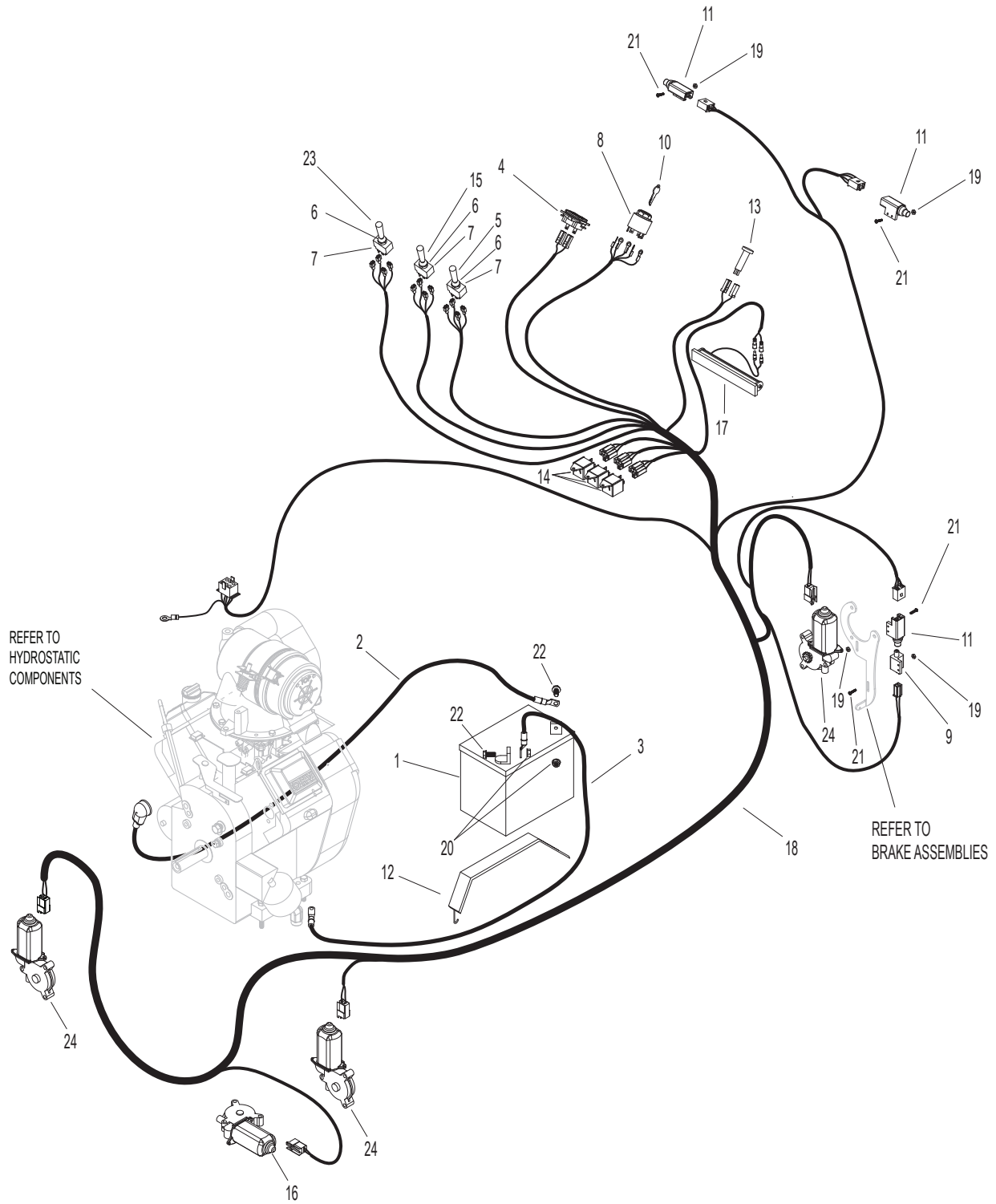
ELECTRICAL COMPONENTS

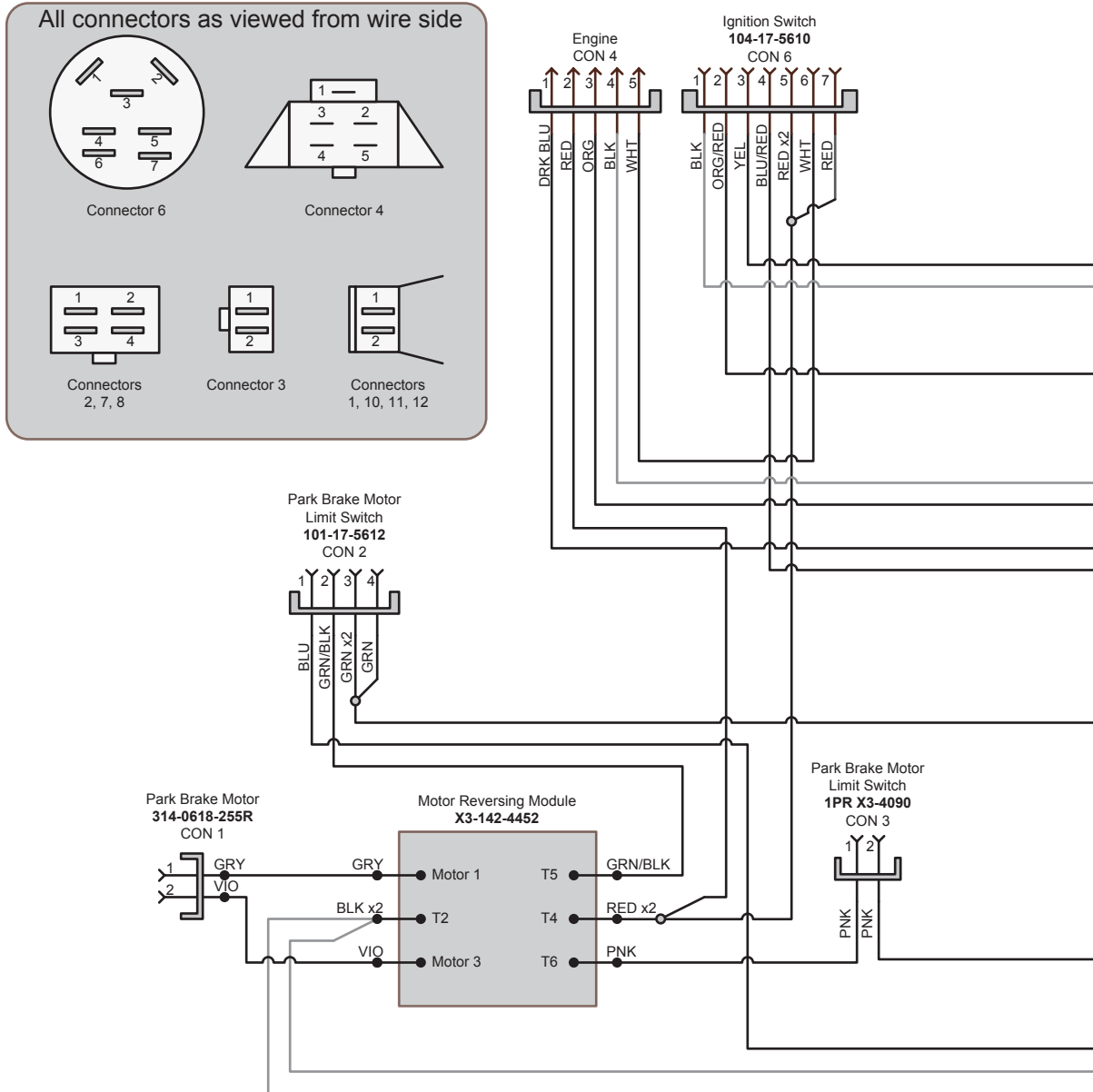
Electrical

Hurricane Power

Part Number	Description	Quantity	Part Number	Description	Quantity		
1	106-17-4001	U1 Battery	1	13	104-17-2805	Warning Light	1
2	X3-18-1802	Positive Battery Cable	1	14	106-17-2817	Relay	3
3	X3-18-1803	Negative Battery Cable	1	15	18272	Switch Extension (Yellow)	1
4	104-17-5205	Tach	1	16	101-18-1802	Deflector Motor Left	1
	106-18-1804	Tach Harness	1	17	ZF1750	Headlight	1
5	106-17-3005	Switch Extension (Red)	1	18	XP15884	Main Wiring Harness	1
6	106-17-2806	Switch Seal	3	19	15106	10-32 Keps Nut	12
7	106-17-3007	Reversing Switch	3	20	15107	5/16-18 Flange Nut	2
8	104-17-5610	Ignition Switch (Snap In)	1	21	15105	10-32 Machine Screw	12
9	X3-4090	Safety Switch (1 PR)	1	22	15108	5/16-18 x 3/4 Flange Bolt	2
10	104-17-5608	Ignition Switch Key	1	23	18273	Switch Extension (Black)	1
11	101-17-5612	Safety Switch 2P	3	24	314-0618-255R	Deflector Motor Right	3
12	16100	Battery Strap	1				

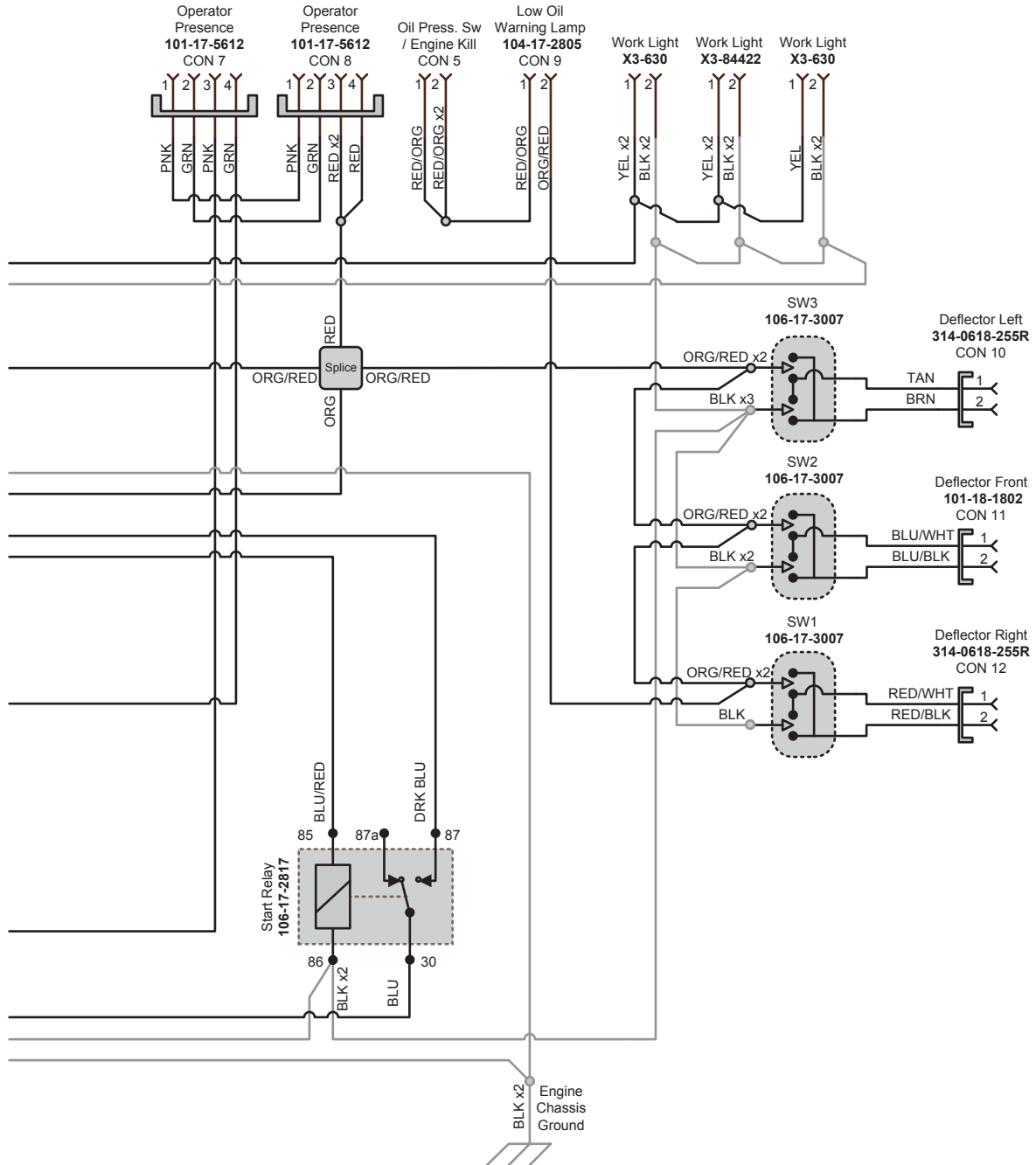
ELECTRICAL COMPONENTS





Rev: 07/01/2014

ELECTRICAL SCHEMATIC



Muskegon, MI