

Foam Marker Kit

For 60, 30, and 24 Gallon Spray System

Kit No. 135-6663

Installation Instructions

Safety

Safety Alert Symbol

This Safety Alert Symbol (Figure 1) is used both in this instruction sheet and on the machine to identify important safety messages which must be followed to avoid accidents

This symbol means: **ATTENTION! BECOME ALERT! YOUR SAFETY IS INVOLVED!**



Figure 1
Safety Alert Symbol

g000502

The safety alert symbol appears above information which alerts you to unsafe actions or situations and will be followed by the word **DANGER**, **WARNING**, or **CAUTION**.

DANGER: Indicates an imminently hazardous situation which, if not avoided, **Will** result in death or serious injury.

WARNING: Indicates a potentially hazardous situation which, if not avoided, **Could** result in death or serious injury.

CAUTION: Indicates a potentially hazardous situation which, if not avoided, **May** result in minor or moderate injury.

This manual uses two other words to highlight information. **Important** calls attention to special mechanical information and **Note** emphasizes general information worthy of special attention.

⚠ WARNING

While maintenance or adjustments are being made, someone could start the engine. Accidental starting of the engine could seriously injure you or other bystanders.

Remove the key from the ignition switch, engage parking brake, and pull the wire(s) off the spark plug(s) before you do any maintenance. Also push the wire(s) aside so it does not accidentally contact the spark plug(s).

Note: Determine the left and right sides of the machine from the normal operating position.

Note: Park the unit on a level surface. Make sure all moving parts have stopped, parking brake is engaged, the key has been removed, and the spark plug wire has been disconnected. Allow unit to cool before starting these instructions.

General Safety

Important: Before starting these instructions:

- make sure to wear the appropriate Personal Protective Equipment (PPE) and follow all safety precautions as stated in the Operator's manual.
- make sure the entire spray system has been properly cleaned.

⚠ CAUTION

Chemicals are hazardous and can cause personal injury.

- Read the directions on the chemical labels before handling the chemicals and follow all manufacturer recommendations and precautions.
- Keep chemicals away from your skin. Should contact occur, wash the affected area thoroughly with soap and clean water.
- Wear goggles, gloves, and any other protective equipment recommended by the chemical manufacturer.



Loose Parts

Use the chart below to verify that all parts have been shipped.

Item	Part No.	Description	Qty
1	135-6638	Mount-Foam Marker-60 Gallon	1
	135-6654	Mount-Foam Marker-30 And 24 Gallon	1
2	135-6664	Marker-Foam, 1 Gallon	1
2:1	142-0073	Cap-Foam Marker	1
2:2	142-0085	Gasket-Foam Marker	1
3	135-6639	Bracket-Nozzle	2
4	135-6108	Nut-Hex Flg 1/4-20 Nyloc SS	4
5	135-6274	Screw-HHF 3/8-16 X 3/4 SS	2
6	135-6280	Screw-HHF 1/4-20 X 1/2 SS	6
7	100-8469	Switch-Rocker	1
8	135-6648	Harness-Accessory	1

Item	Part No.	Description	Qty
9	135-6628	Block-Terminal	1
10	135-6356	Screw-HH #10-24 x 3/4 SS	3
11	135-6342	Nut-Hex Flg #10-24 Nyloc SS	3
12	135-6630	Harness-Wire, Jumper	1
13	135-6661	Asm-Nozzle, Foam Marker	2
14	138-2751	Fitting-Tee, Barb	1
15	135-6665	Hose-Spray	1
16	3290-378	Tie-Cable	10
17	135-2882	Nut-Hex Flg 3/8-16 SS w/patch	4
18	1-543393	Insulator-Solenoid	1
19	364-0371	Nut-Hex Nyloc 10-32 UNF	1

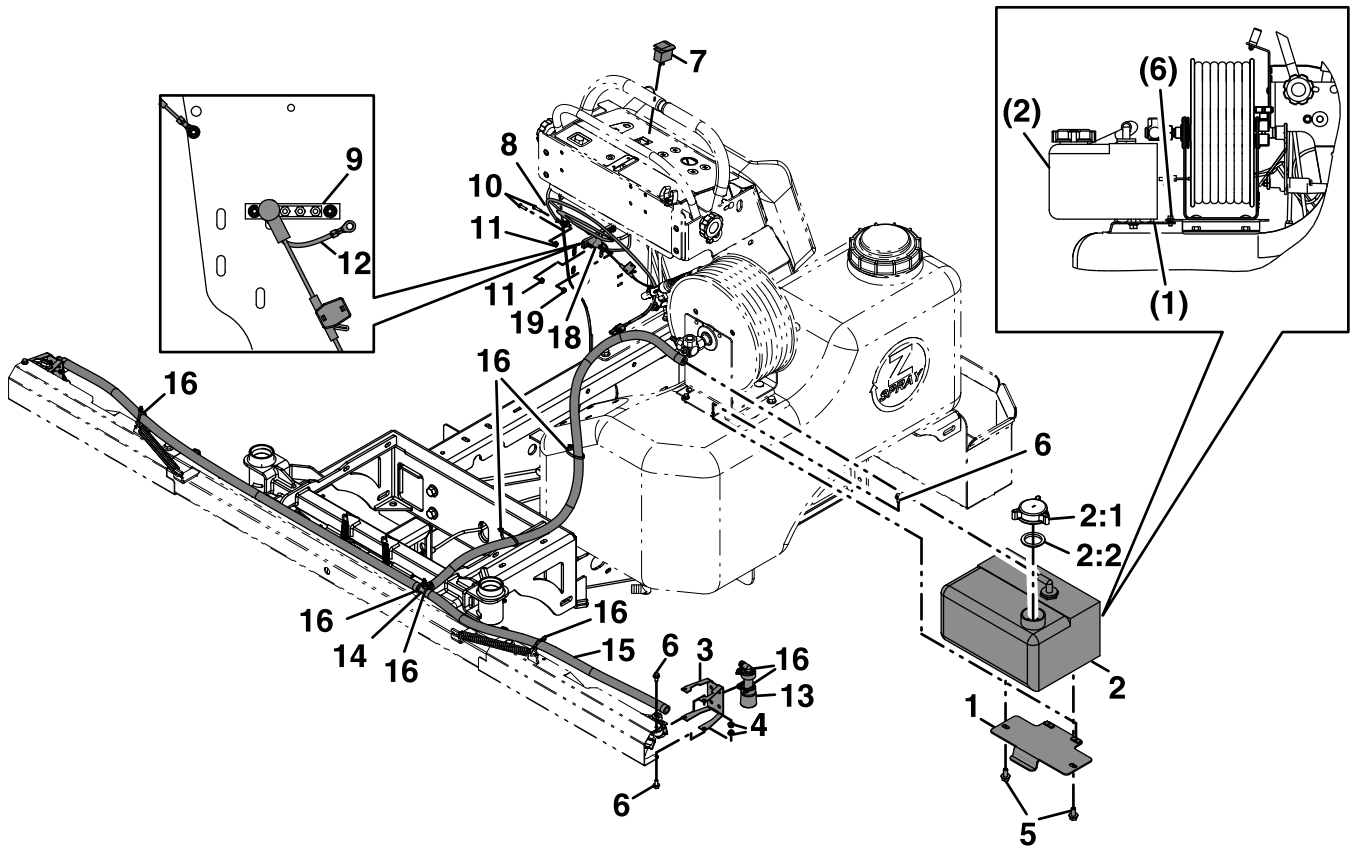


Figure 2

g287416

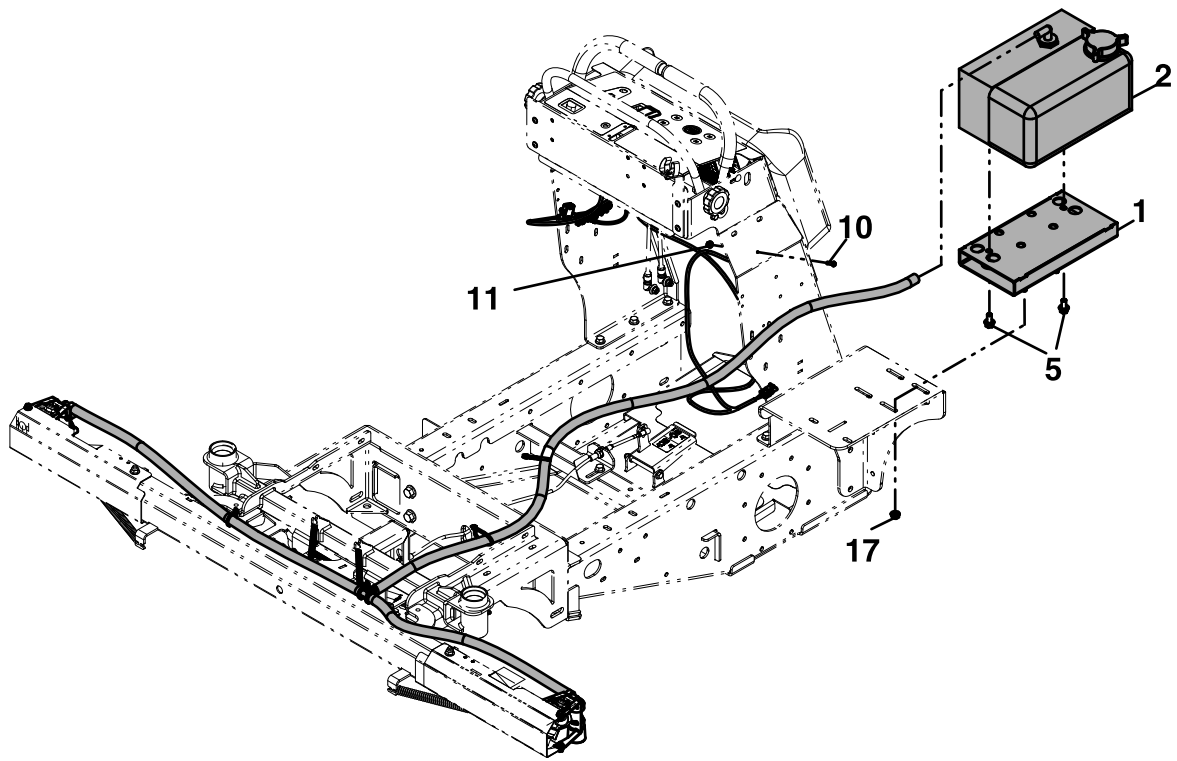


Figure 3
30 Gallon Model

g279219

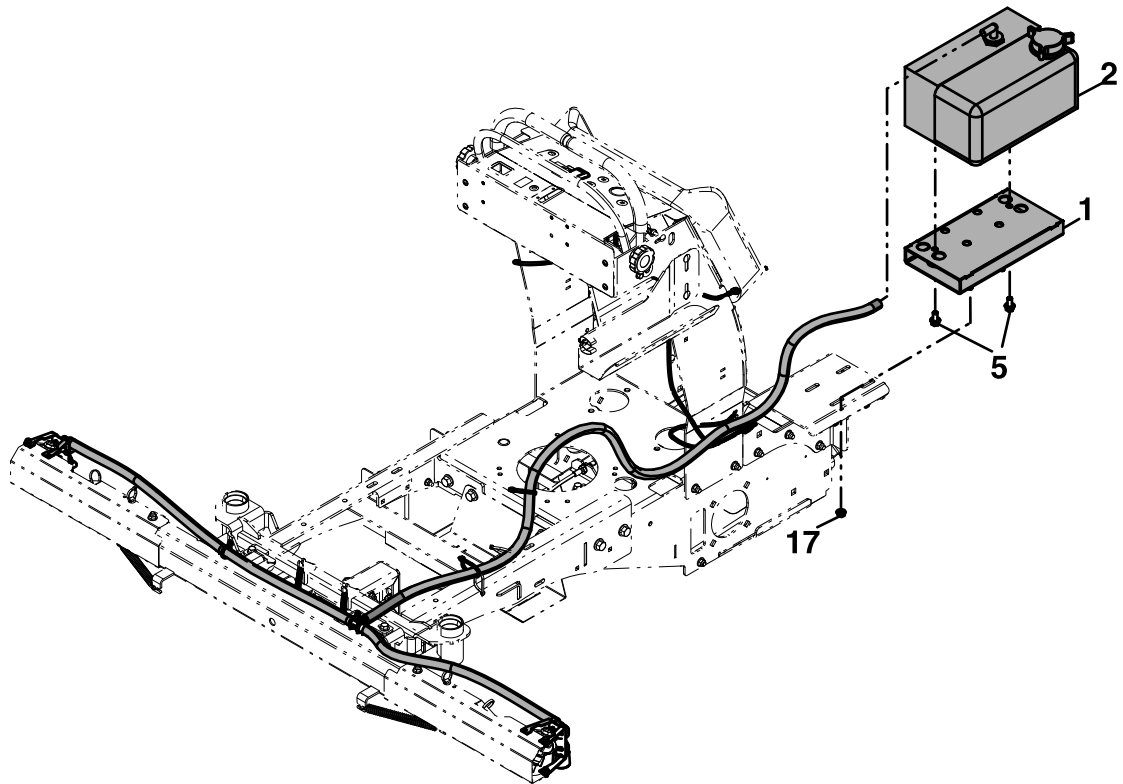


Figure 4
24 Gallon Model

g280341

Installation Instructions

1. Stop engine, wait for all moving parts to stop, engage the parking brake remove the key, and disconnect the negative battery cable.
2. Assemble the foam marker mount to the 1 gallon system using 3/8-16 x 3/4 inch screws.
3. Install the 1 gallon system to the machine.

- For 60 Gallon Models:

Attach the foam marker and mount assembly to the front of the hose reel mount using two 1/4-20 x 1/2 inch screws (see).

- For 30 and 24 Gallon Models:

A. Remove and retain the left fertilizer box and its mounting hardware.

B. Install the tank assembly to the frame using four 3/8-16 x 3/4 inch bolts and 3/8 inch flanged hex nuts.

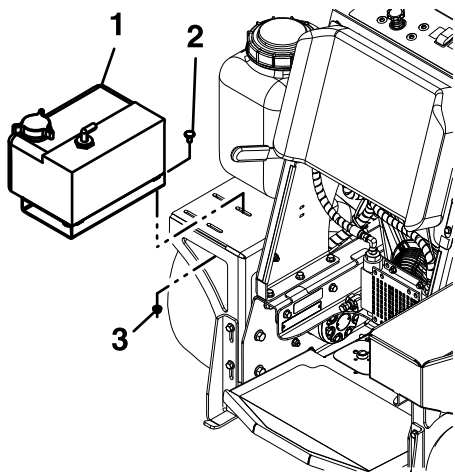


Figure 5

g279262

1. Tank assembly
2. 3/8-16 x 3/4 inch bolt
3. 3/8 inch flanged hex nut

4. Remove and retain the rear cushion.
5. Using the control panel as a guide, carefully cut out the switch opening in the control panel decal.

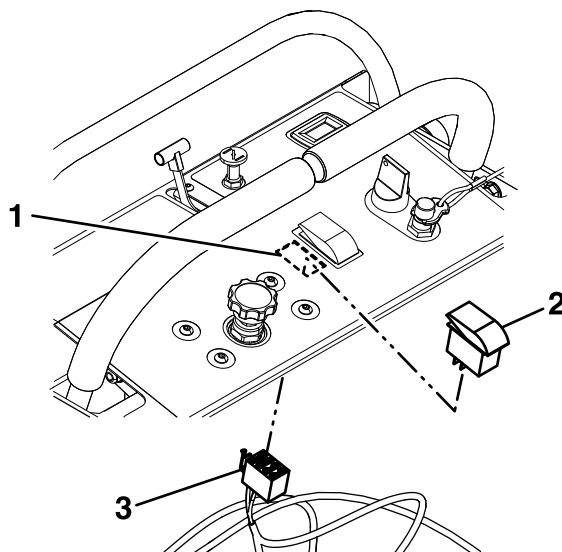


Figure 6

g276360

1. Cutout
2. Switch
3. Harness

6. Place the switch on the top side of the control panel and orient it similar to the existing switch. Carefully snap the switch into the cutout. Route the harness underneath the panel and connect the switch. Make sure the connectors are fully inserted onto the terminals.

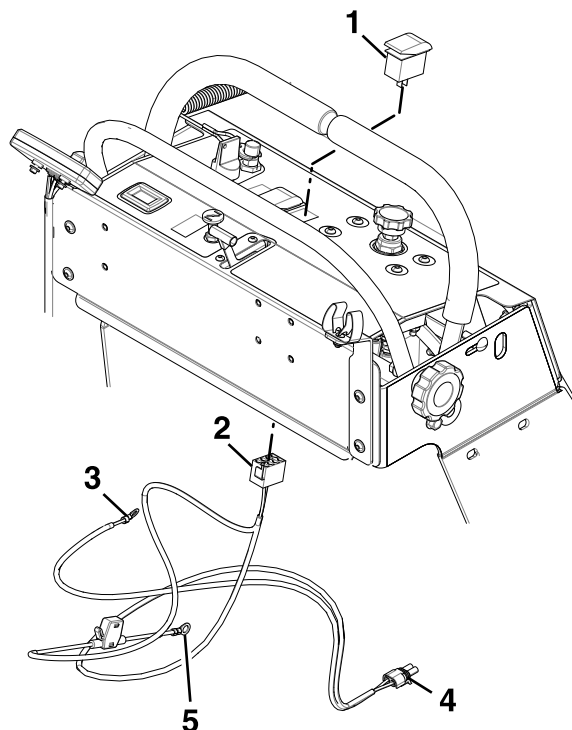


Figure 7

g279584

1. Switch
2. Harness
3. Ground
4. Pump
5. Fuse holder

7. For 60 and 30 gallon models, install the terminal block to the inside of the RH panel. Using the two outer most holes, align to the holes on the inner panel. Secure the block using two #10–24 x 3/4 inch stainless steel screws and two #10 inch nyloc nuts.

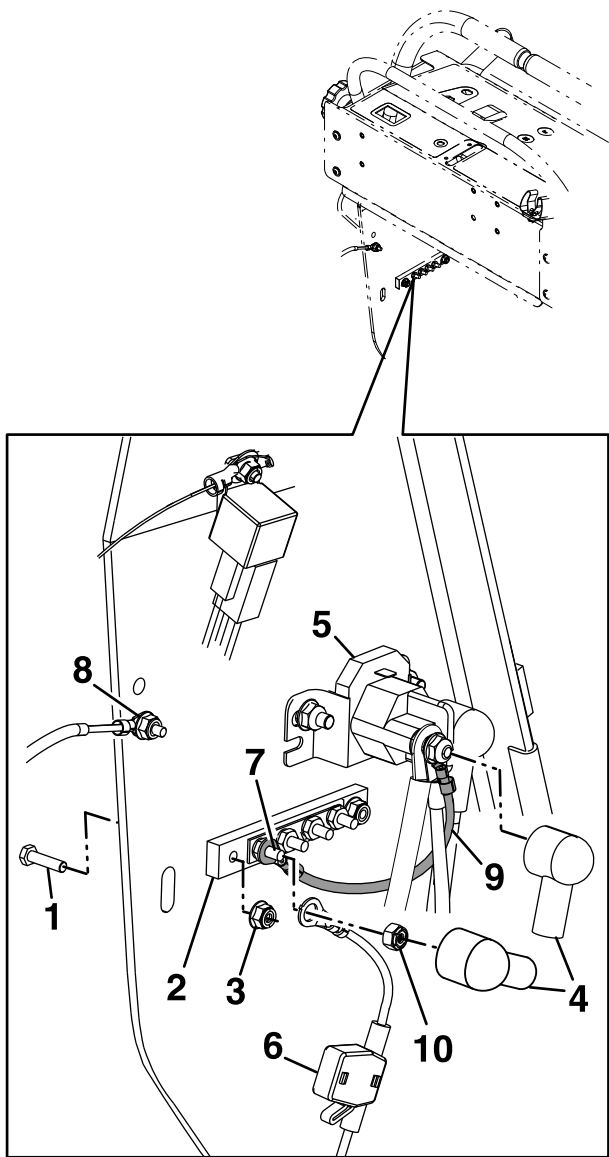


Figure 8

60 and 30 Gallon Model

g276435

- | | |
|--|--|
| 1. #10–24 x 3/4 inch stainless steel screw | 6. Fuse holder harness and solenoid post |
| 2. Terminal block | 7. Relay post |
| 3. #10 inch nyloc nut | 8. Ground |
| 4. Solenoid insulator | 9. Jumper wire |
| 5. Starter solenoid | 10. #10-32 UNF inch nut |

8. Install the ground wire from the accessory harness.

- For 60 Gallon Model: Mount the ground on the RH side of the tower (see item 8 in [Figure 8](#)).
- For 30 Gallon and all 24 Gallon Models: The ground wire is located inside the LH tower panel (see items 10 and 11 in [Figure 3](#)).

9. Remove the solenoid insulator from the starter solenoid.

- For 60 and 30 Gallon Models: Remove the nut and install one end of the jumper wire to the starter solenoid and reinstall the nut and insulator (see [Figure 8](#)).
- For 24 Gallon Model: Remove the nut and install the fuse holder harness accessory to starter solenoid and reinstall the nut and insulator (see [Figure 9](#)).

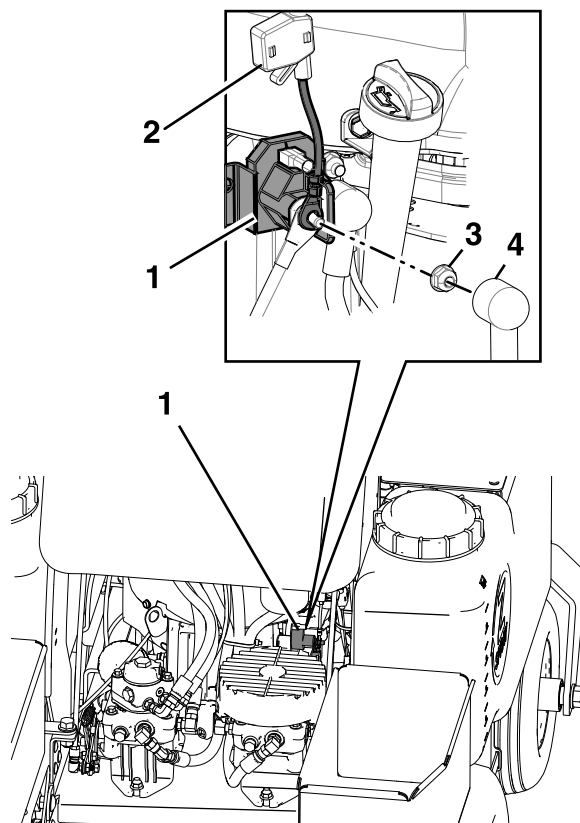


Figure 9

24 Gallon Model

g280337

- | | |
|----------------------------------|-----------------------|
| 1. Starter solenoid | 3. Nut |
| 2. Fuse holder harness accessory | 4. Solenoid insulator |

10. For 60 and 30 gallon models, insert the other end of the jumper wire and fuse holder harness through the insulator. Place the jumper wire and fuse holder harness onto the relay post and secure with #10-32 UNF inch nut and insulator as shown in [Figure 8](#).

Note: The terminal block and jumper wire are not used on the 24 gallon model.

11. Connect the pump connector from the tank assembly to the accessory pump connector (item 4 in [Figure 7](#)).
12. Use zip ties to secure the accessory harness away from other components.
13. Using two 1/4-20 x 1/2 inch bolts and nuts, secure the foam nozzle bracket assembly to the LH side of the frame as shown in [Figure 10](#). Attach the foam marker nozzles to the nozzle brackets using two zip ties. Repeat this step to install the foam marker nozzle on the RH side.

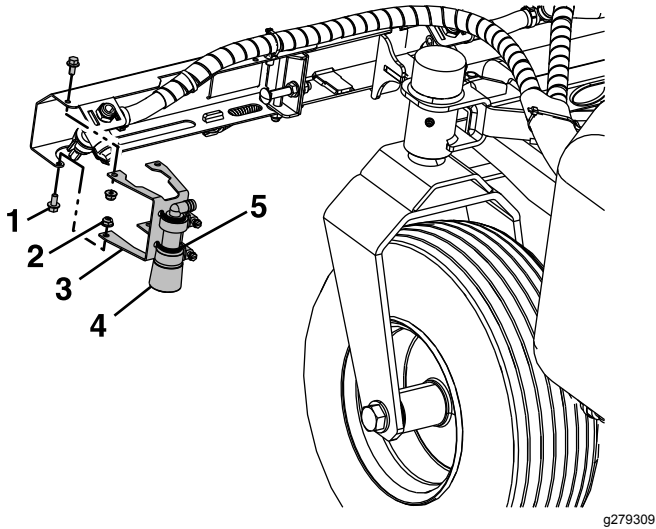


Figure 10

- | | |
|---------------------------|-----------------------|
| 1. 1/4-20 x 1/2 inch bolt | 4. Foam marker nozzle |
| 2. 1/4-20 inch nut | 5. Zip tie |
| 3. Nozzle bracket | |

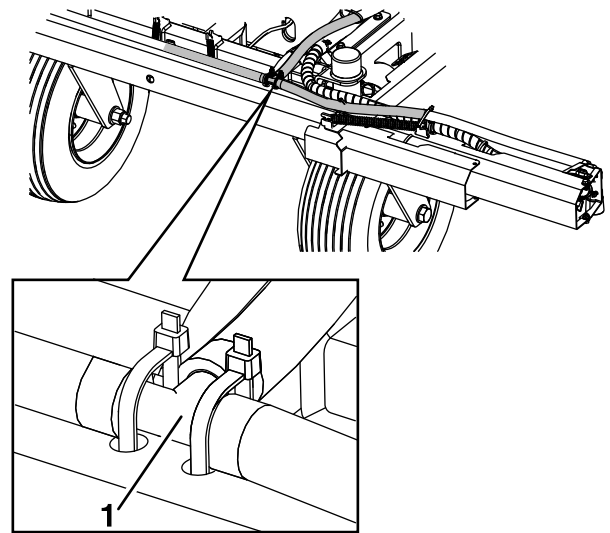


Figure 11

g279311

14. Install the foam marker hose to the boom tee fitting. The hose will need to be cut to fit.

Note: On the 24 gallon model, the hose routes to the inside of the tower (see [Figure 4](#)).

1. Tee fitting

15. Install the left and right boom hoses and attach to the tee fittings and side nozzles. The hoses will need to be cut to fit; be careful not to cut the hoses too short.
16. Secure the hoses with zip ties.
17. Reconnect the negative battery cable.
18. Add pure clean water to the 1 gallon tank.
19. Turn the ignition key to ON and then operate the spray system and check for leaks. Repair all leaks before returning the sprayer to service.
20. Reinstall the rear cushion.