

PLEASE CALL IF YOU ARE MISSING ANY PARTS, HAVE ANY DIFFICULTY IN ASSEMBLY, OR HAVE ANY QUESTIONS REGARDING THE SAFE OPERATION OF THIS SPREADER.
SUPPORT: 574-848-7491 or support@EarthWay.com

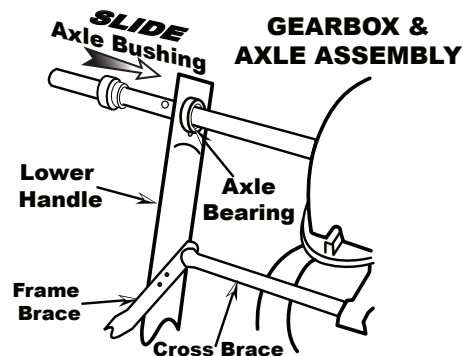
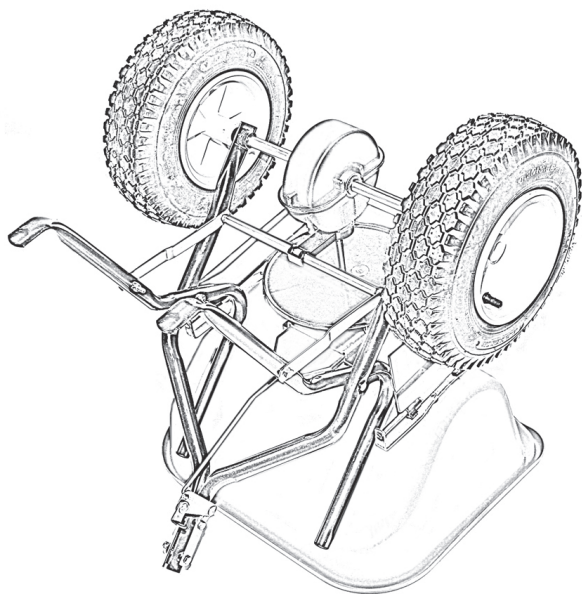
HELPFUL HINTS: READ THE DIRECTIONS BEFORE ASSEMBLY

THIS SPREADER COMES PARTIALLY ASSEMBLED, REQUIRING YOU TO INSTALL THE WHEELS, HANDLE ASSEMBLY AND CONTROL ROD. IT SHOULD TAKE APPROXIMATELY 10 MINUTES WITH THE USE OF TWO 7/16" WRENCHES AND 1 PAIR OF PLIERS.

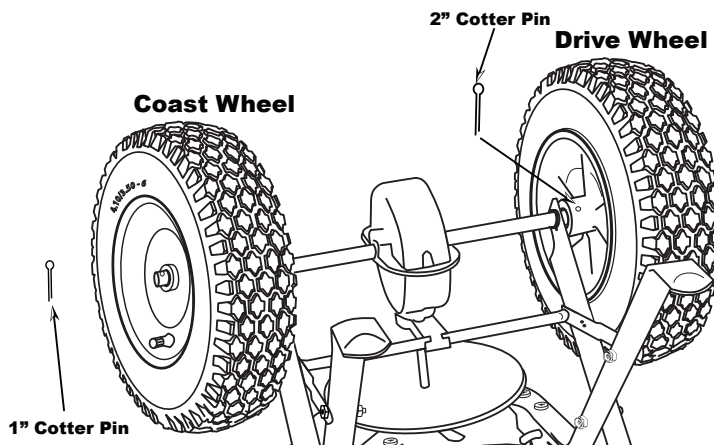
- ☑ Clean the impeller plate after each use. Material build up on the impeller blades will cause uneven spreading.
- ☑ Your spreader is designed to be pushed at three miles per hour, which is a brisk walking speed. Slower or faster speeds will change the spread patterns. Wet material will also change the spread pattern and flow rate.
- ☑ Clean your spreader thoroughly after each use. Wash between the shut off plate and bottom of the hopper.
- ☑ Gears are permanently lubricated at the factory. Do not open the gearbox or dirt may enter.
- ☑ When using Rock Salt remove salt from the hopper daily. Rock Salt will reconstitute back into a solid block over night with humidity. As a preventative measure, spray all metal parts thoroughly (inside the tubing) with WD-40 or a spray lubricant to prevent corrosion.

1. Open carton and remove the handle assembly, wheels, and spreader from carton.

2. Turn spreader upside-down on to the hopper.

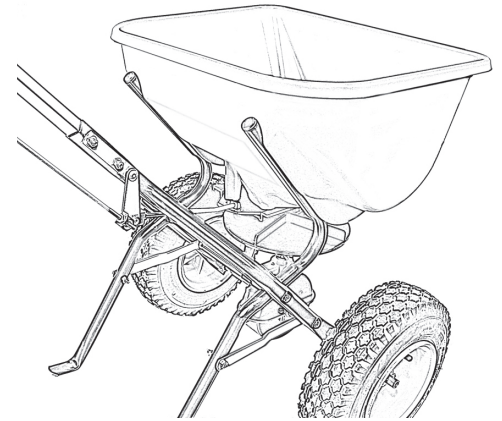
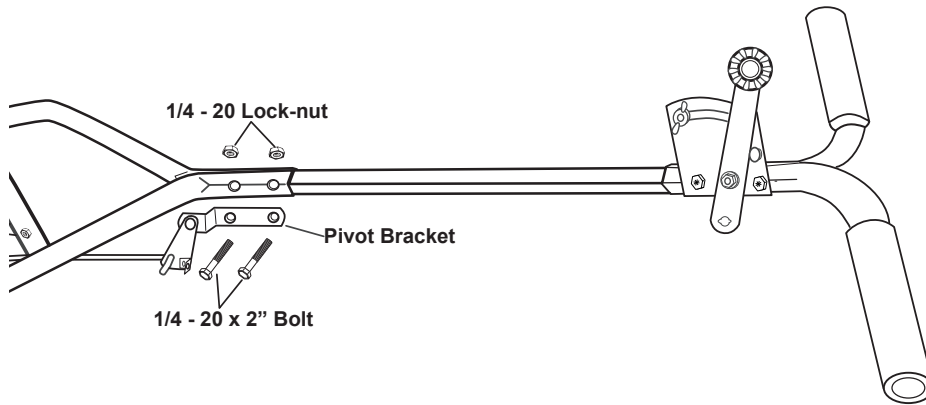


3. Ensure that the axle bearings are pushed into the axle bushing on both sides as shown. Install drive wheel (both wheels are interchangeable) to axle using pin hole nearest to lower handles as shown. Insert 2" cotter pin through wheel and through axle. Bend with pliers to prevent pin from falling out.



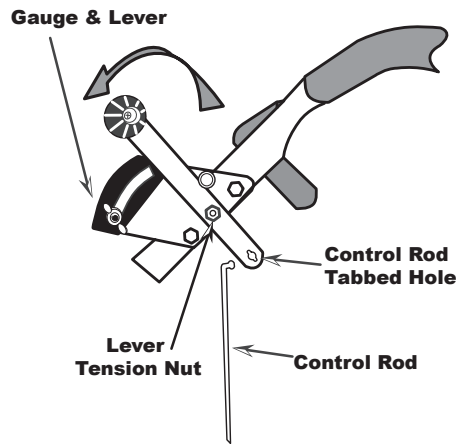
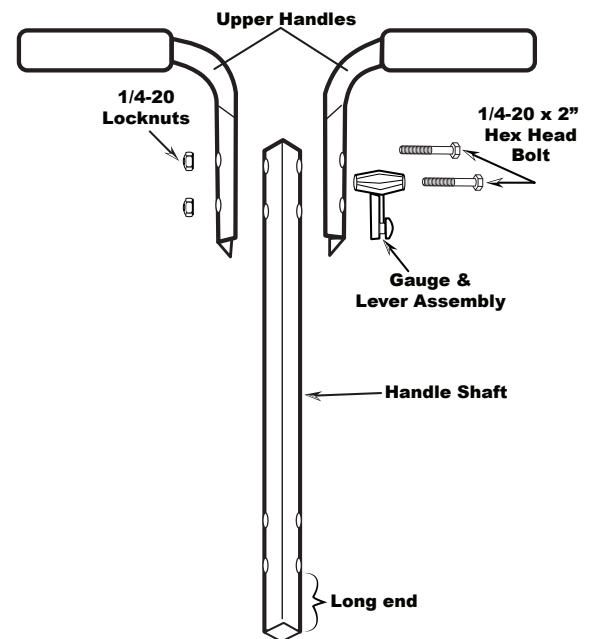
4. Install coast wheel to axle, then using outside pin hole as shown, insert 1" cotter pin through axle (not thru the wheel). Bend with pliers to prevent pin from falling out.

5. Install handle shaft to lower handles and pivot & bracket assembly as shown.
Using 2" bolts and locknuts. **TIGHTEN BOLTS AND NUTS NOW.**



6. Insert 2" bolt through Gauge & Lever assembly, next through upper handle, then the handle shaft and then the other upper handle and secure with locknut.

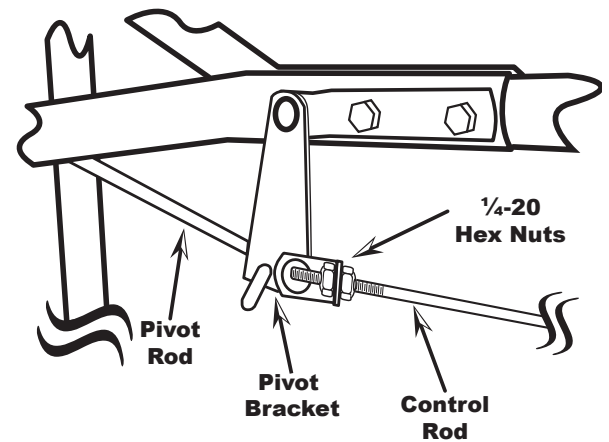
TIGHTEN ALL HARDWARE NOW



7. Install Control Rod by inserting flattened end of Control Rod into Lever on Gauge as shown. Turn to lock in place. *{Make sure that there is a plain 1/4-20 Hex Nut threaded about halfway up the threads}*

Push lever forward to full OPEN setting. Align and push the Control Rod through the angle attached to the Pivot Bracket. Now install 1/4-20 regular nut on to control rod. *{One nut on either side of the angled plate}*

Next pull pivot & bracket back so that the shut off plate in the hopper is in the full open position and adjust the Hex Nuts on the Pivot Bracket angle to secure the angled bracket. Now tighten the nuts against the pivot angled bracket to prevent change in calibration.



1 YEAR LIMITED WARRANTY

Earthway Products, Inc. warrants this product free of defects in original workmanship and materials for a period of 1 year to the end user with the original purchase receipt. If a manufacturing non-conformance is found, Earthway Products, Inc. at its discretion will repair or replace the part(s) or product at no charge provided the failure is not the result of incorrect installation, mishandling, misuse, tampering, or normal wear and tear as determined by Earthway. Earthway at its discretion may require that the part(s) or product be returned along with the original purchase receipt at owners' expense for examination and compliance with the terms of this warranty. Do not return any product without first receiving authorization from Earthway Products, Inc. To seek remedy under this warranty, contact Earthway Products, Inc. at 574-848-7491, support@earthway.com or write to Earthway Products, Inc. 1009 Maple Street, Bristol, Indiana 46507. Describe the nature of the manufacturing defect. **SPECIFIC LIMITATIONS:** This warranty covers only the part(s) or product; any labor charges associated with repair or replacement of non-conformances are specifically excluded. Due to the corrosive nature of most fertilizers and ice melt products, Earthway Products, Inc. makes no warranty against and specifically excludes part(s) or product degradation or failure due to corrosion or its effects. ***Clean and dry*** your spreader thoroughly after each use, as a preventative measure, coat all metal parts (inside and outside of the steel tubing) with a light oil or silicon spray.

OPERATING INSTRUCTIONS

Before filling hopper, become familiar with the operation of this spreader. Do not use fertilizers or other lawn chemicals in this spreaders because it is not intended for use with these materials. If you have any questions please contact Earthway.

- Move stop bolt on gauge assembly to the proper position for the material being applied.
- While pushing spreader forward, push control lever forward to stop bolt.
- To stop, pull lever backward to close flow hole before you stop moving.
- When finished, empty any remaining material from hopper.
- Thoroughly wash and dry your spreader and recoat with WD-40 before storing.

DO NOT RETURN TO DEALER FOR REPAIR

EARTHWAY PRODUCTS, INC.

1009 Maple Street
Bristol, IN 46507

FOR YOUR RECORDS

Date Purchased

Store Name

HOW TO ORDER SPARE PARTS

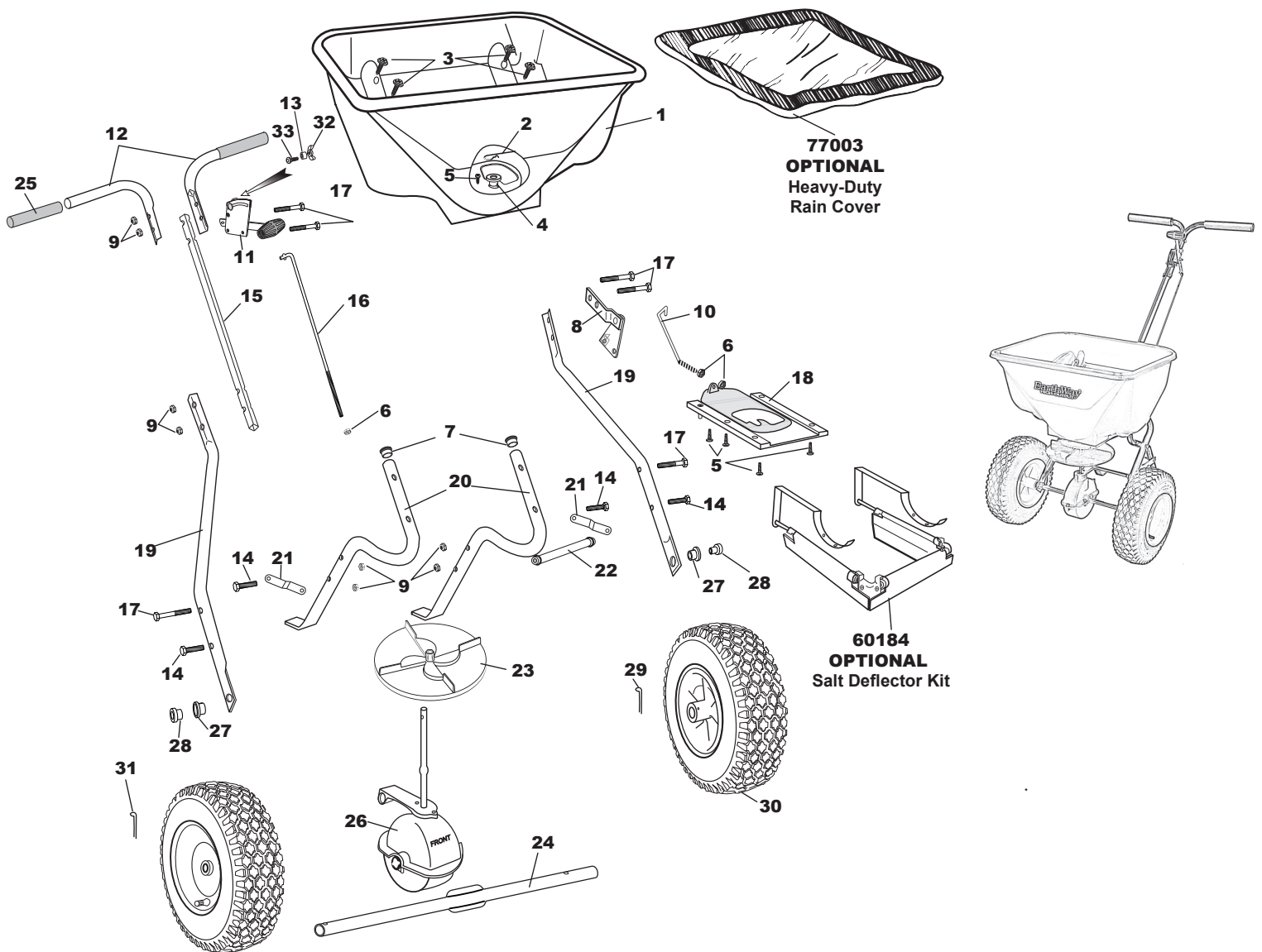
All spare parts listed herein may be ordered direct from the manufacturer. Be sure to give the following information when ordering.

◀ Model Number

◀ Part Number

◀ Part Description

Call (574) 848-7491 to place an order



90365 ICE MELT SPREADER PARTS LIST

KEY #	PART #	DESCRIPTION	KEY #	PART #	DESCRIPTION
1	60245	HOPPER ASSEMBLY	19	25222	LOWER HANDLE
2	33117	AGITATOR	20	25724	FRAME
3	31141	#14 X 3/4" TYPE "AB" HWHS ZINC	21	44292	FRAME BRACE
4	12220	HOPPER BUSHING	22	25228	CROSS BRACE
5	31122	#8 X 5/8" PHPS TYPE A BLACK	23	12110	IMPELLER 9" DIA DISHED
6	32100	1/4-20 HEX NUT ZINC	24	24500	AXLE
7	19132	7/8" TUBE PLUG	25	12274	GRIP 7.5" LONG
8	60300	PIVOT & BRACKET ASSEMBLY	26	60333	GEAR BOX
9	32103	1/4-20 NYLON INS LOCKNUT ZINC	27	12148	AXLE BEARING
10	42259	LOWER CONTROL ROD 2130	28	12152	AXLE BUSHING
11	60499	GAUGE & LEVER ASSEMBLY 2130	29	33109	3/16" X 2" COTTER PIN ZINC
12	60175	UPPER HANDLE W/GRIP	30	70138	PNEUMATIC DRIVE/COAST WHEEL
13	12147	SPACER	31	33108	3/16" X 1" COTTER PIN ZINC
14	31121	1/4-20 X 1 1/4" HHCS ZINC	32	60027	WING NUT ASSEMBLY
15	25223	HANDLE SHAFT	33	37100	1/4-20 X 1" CARRIAGE BOLT ZINC
16	42256	CONTROL ROD			
17	31120	1/4-20 X 2" HHCS ZINC			
18	12354	SHUTOFF ASSEMBLY			