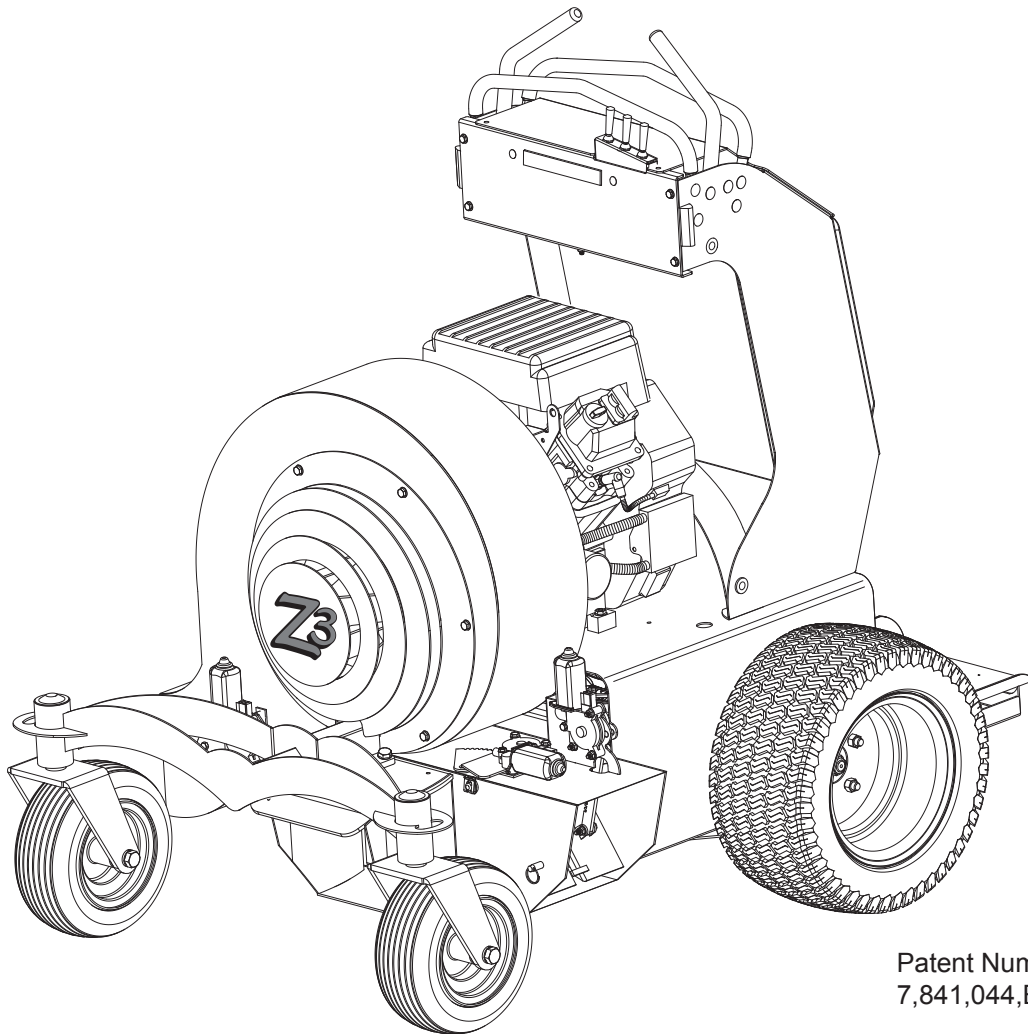


HURRICANE POWER

2016-Current Z3
Commercial Debris Blower

Parts Manual



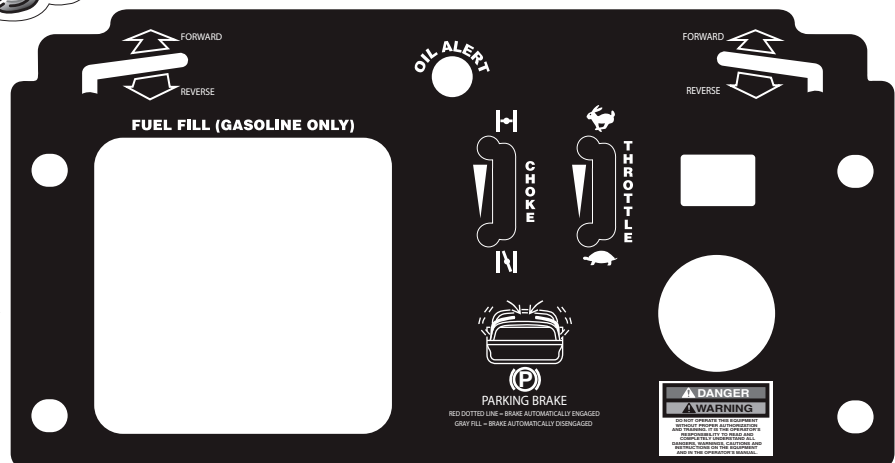
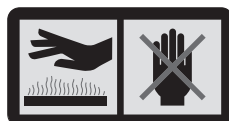
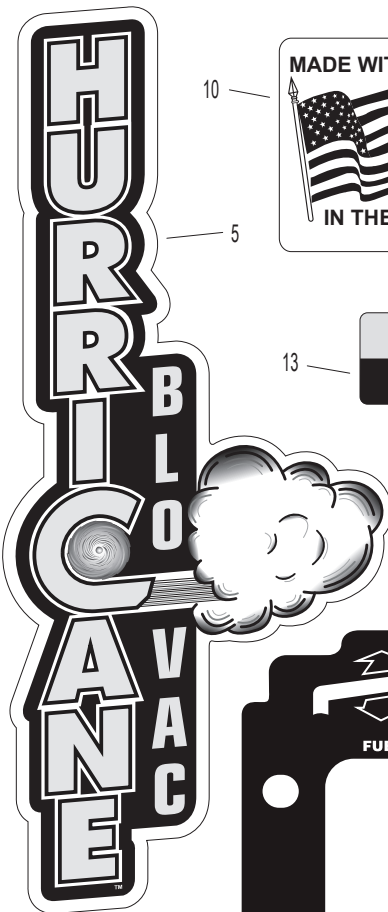
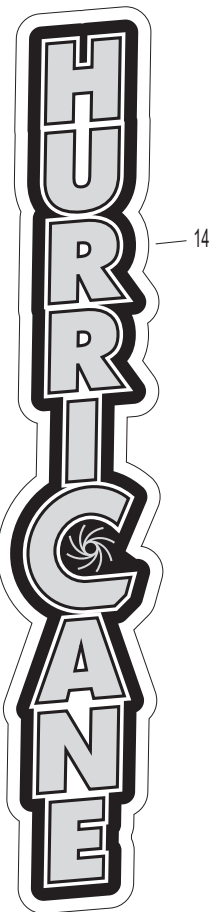
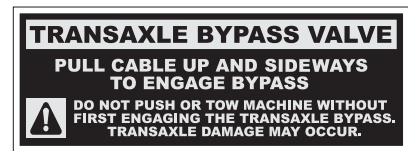
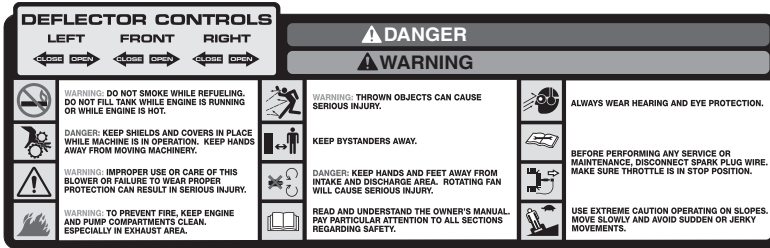
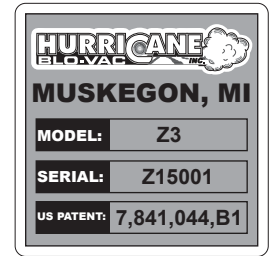
Patent Number
7,841,044,B1

DECALS

Decals

Hurricane Power

	Part Number	Description	Quantity		Part Number	Description	Quantity
1	425-4201	Front Logo Decal	1	8	425-4209	Hydro Decal	1
2	ZP15025	Data Plate	1	9	425-4206	Danger Decal	5
3	X3-4210	Top Dash Decal	1	10	425-4204	Made in the USA Decal	1
4	425-4205	Hot Decal	1	11	425-4211	Dash Controls Decal	1
5	425-4202	Left Logo Decal	1	12	314-17-42100	Trans Bypass	2
	425-4203	Right Logo Decal	1	13	X3-4213	Emergency Brake Release	1
6	ZP15024	Safety Cover Decal	1	14	X3-16-4202	Left/Right Upright Decal	2
7	425-4208	Pinch Decal	2	15	X3-16-4201	Front Logo Decal	1



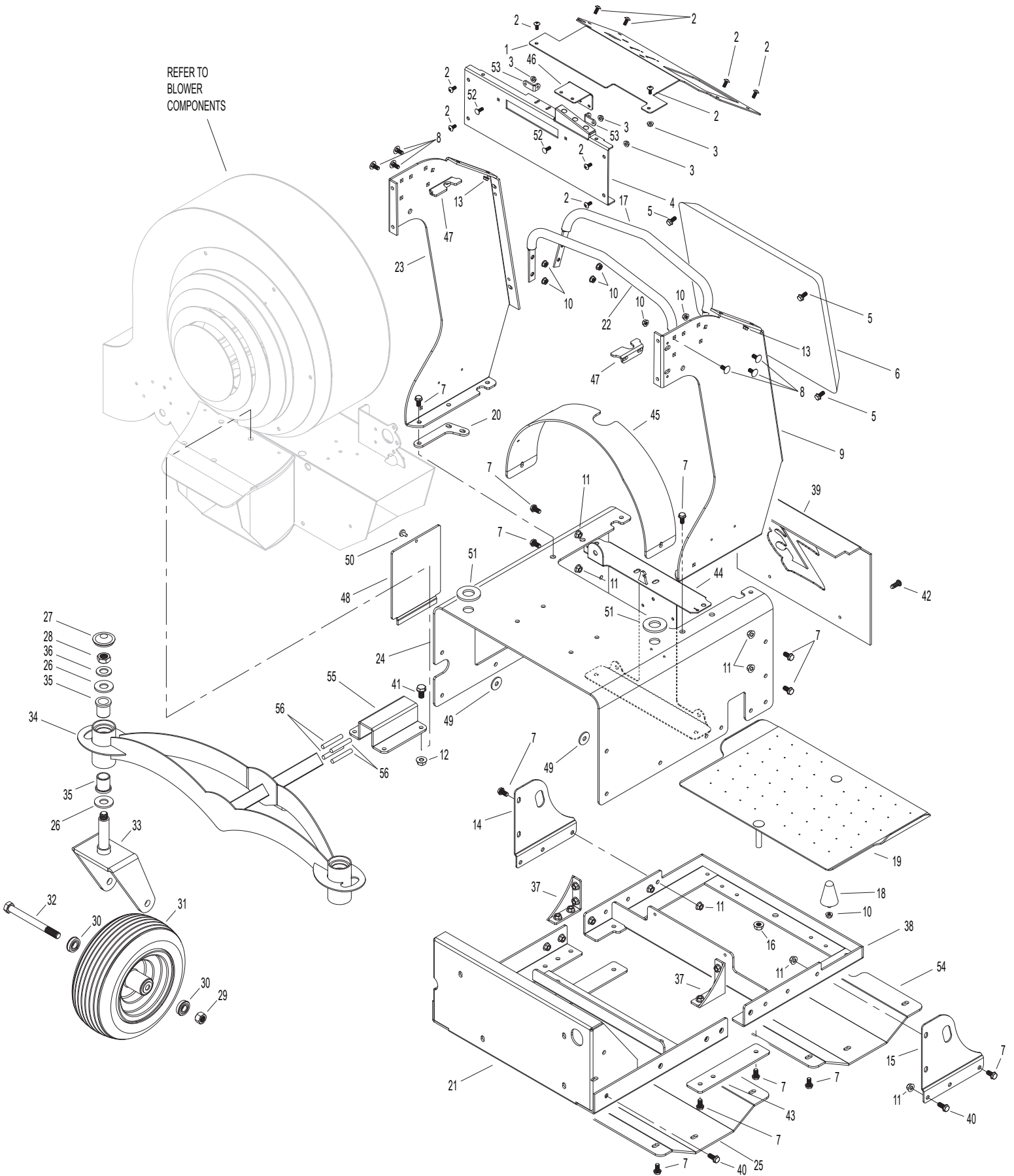
CHASSIS COMPONENTS

Chassis

Hurricane Power

	Part Number	Description	Quantity		Part Number	Description	Quantity
1	X3-1452	Dash	1	26	15136	1 x 10 Gauge	4
2	15102	1/4-20 x 3/4 Flange Bolt	10			Machine Bushing	
3	15101	1/4-20 Flange Nut	12	27	15161	Plastic Grease Cap	2
4	X3-1451	Dash Front Panel	1	28	15139	3/4-10 Nylon Jamb Nut	2
		Serial Number		29	15581	5/8-11 Nylock Nut	2
		Z16295 or Lower		30	109-17-7011	Caster Bearings	4
	ZF1751	Dash Front Panel	1	31	ZP15027	Caster Wheel & Tire	2
		Serial Number				with Bearing	
		Z16296 or Higher		32	ZP15028	Bolt 5/8-11 x 8.5"	2
5	15108	5/16-18 x 3/4 Flange Bolt	6	33	ZF15026	Caster Fork	2
6	112-18-1812	Pad	1	34	ZF15029	Front End Frame Assembly	1
7	15112	3/8-16 x 3/4 Flange Bolt	24	35	0117-162024	Plastic Bushing	4
8	15109	5/16-18 x 3/4 Carriage Bolt	12	36	15137	3/4 Machine Bushing	2
9	ZF15033	Left Upright	1	37	X3-14-3017	Hydro 90° Bracket	2
		Serial Number		38	ZF15009	Rear Chassis Frame	1
		Z16295 or Lower		39	ZF15013	Toe Kick	1
	ZF17033	Left Upright	1	40	15062	3/8-16 x 1 Flange Bolt	12
		Serial Number		41	15064	1/2-13 x 1-1/4 Flange Bolt	4
		Z16296 or Higher		42	15157	5/16-18 x 1/2 Self	2
10	15107	5/16-18 Flange Nut	6			Tapping Screw	
11	15111	3/8-16 Flange Nut	22	43	X3-1443	Bottom Chassis Bracket	2
12	15046	1/2-13 Flange Nut	4	44	ZF15051	Hydro I-Beam	1
13	15061	1/4-20 Riv-Nut	2	45	ZF15014	Belt Guard	1
14	X310-2006	Right Side Plate Tie Down	1	46	ZF15042	Relay Mount Bracket	1
15	X310-2018	Left Side Plate Tie Down	1			Serial Number	
16	15056	1/2-13 Nylock Jamb Nut	1			Z16295 or Lower	
17	16-30502	Reverse Stop	1		ZF17042	Relay Mount Bracket	1
18	425-16-11100	Rubber Mount	4			Serial Number	
19	X310-2011	Foot Pad	1			Z16296 or Higher	
20	ZF15010	Upper I-Beam Mount	2	47	X3-1440	Neutral Centering Bracket	2
21	ZF15008	Front Chassis Frame	1	48	X3-1454	Battery Door	1
22	16-30501	Forward Stop	1	49	X3-1455	Base Box Spacer	2
23	ZF15032	Right Upright	1	50	15313	1/4-20 x 1/2 Cap Screw	1
		Serial Number				With Plastic Knob	
		Z16295 or Lower		51	5187	Rubber Grommet	2
	ZF17032	Right Upright	1	52	17109	1/4-20 x 3/4 Carriage Bolt	4
		Serial Number		53	ZF17043	Headlight Mount "L" Bracket	2
		Z16296 or Higher		54	ZF1445	Leaf Skid Plate	1
24	ZF15007	Base Box	1	55	16-2002	Front End Torsion Plate	1
25	X3-1445	Skid Plate	1	56	16-2003	Rubber Cord (Set of 4)	1

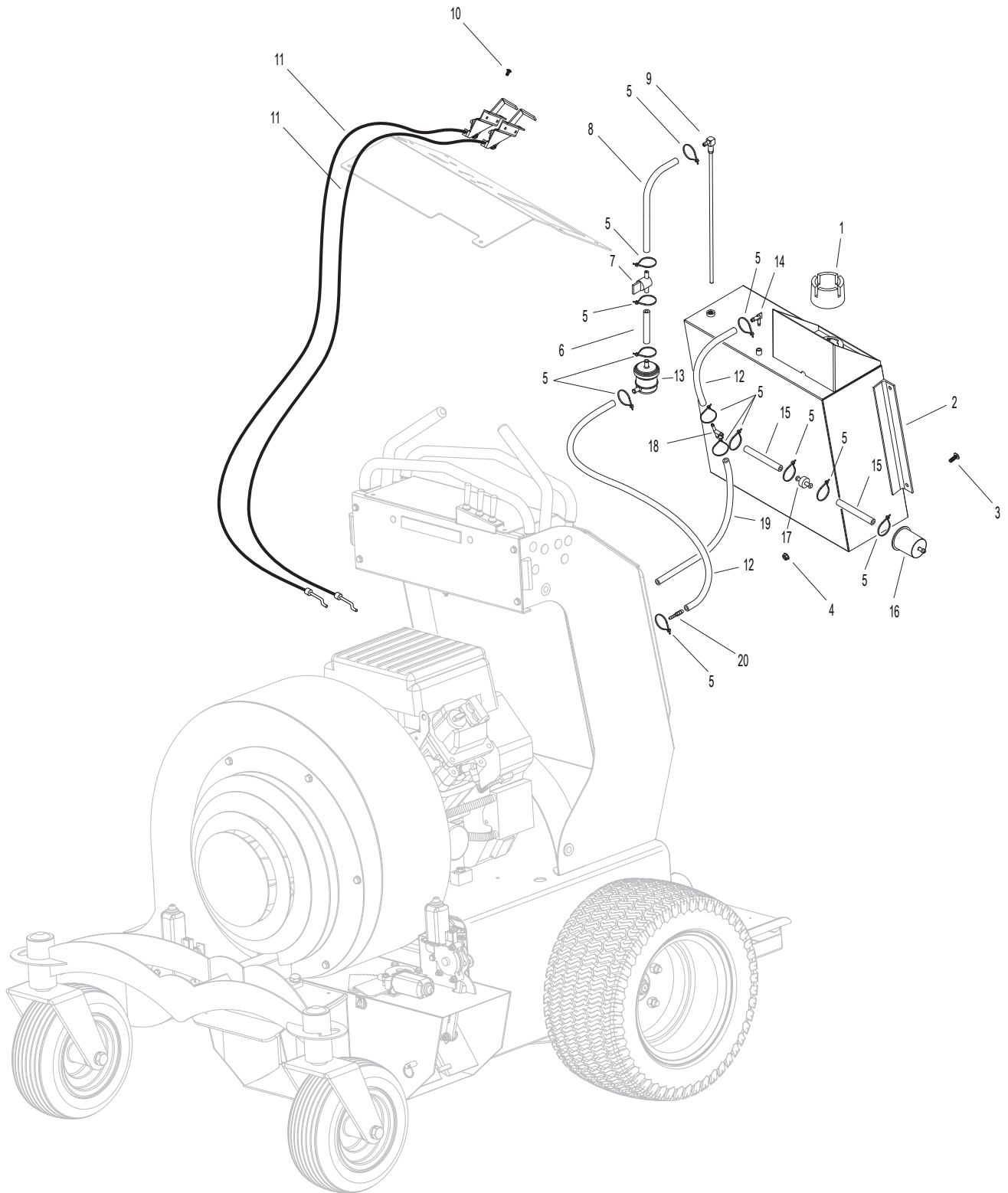
CHASSIS COMPONENTS



FUEL AND THROTTLE COMPONENTS

	Part Number	Description	Quantity		Part Number	Description	Quantity
1	1101-73601	Fuel Cap	1	11	425-1041-76010	Throttle/Choke Cable	2
2	ZF15034	Fuel Tank	1	12	ZP15037	Fuel Line 1/4	2
3	15091	1/4-20 x 3/4 FPHMS	4	13	110-17-5403	Fuel Filter	1
4	15101	1/4-20 Flange Nut	4	14	X3-TL522	Plastic Elbow	1
5	425-12-1414	Spring Hose Clamp	13	15	ZP15036	Fuel Line 1/4	2
6	ZP15038	Fuel Line 1/4	1	16	110-17-5404	Emissions Filter	1
7	1101-73805	Ball Valve Fuel Shutoff	1	17	110-17-5405	Check Valve	1
8	ZP15039	Fuel Line 1/4	1	18	110-17-5406	1/4 Tee	1
9	1101-73811	Fuel Pickup	1	19	ZP15054	Fuel Line	1
10	15090	10-32 BT Hex Screw	4	20	110-17-5407	1/4 x 3/16 Reducer	1

FUEL AND THROTTLE COMPONENTS



HYDROSTATIC COMPONENTS

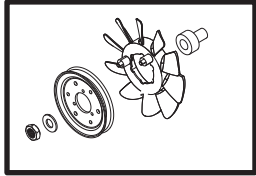
Hydro

Hurricane Power

Part Number	Description	Quantity	Part Number	Description	Quantity		
1	139530	Control Grip 9"	2	29	15072	3/8-16 x 9-3/8 Hex Bolt	1
2	15162	3/32" Cotter Pin	4	30	X3-1436	Hydro Spacer Tube	1
3	14-40-2011	Control Handle	2	31	15060	1/2 x 2-1/2 Clevis Pin	2
4	15140	1/4-28 Nylock Nut	4	32	16127	#98 Idler Spring	1
5	15315	1/2 x 4-1/2 Clevis Pin	2	33	15303	1/2-13 x 2 Hex Bolt	1
6	0117-081216	Plastic Bushings	8	34	17-4101	Idler Pulley	1
7	X3-1437	Lower Control Switch	1	35	15124	1/2 SAE Flat Washer	1
		Bracket Right		36	15046	1/2-13 Flange Nut	1
8	X3-1438	Lower Control Switch	1	37	ZF15052	Idler Arm	1
		Bracket Left		38	15316	5/16 Thru Hard Flat Washer	1
9	15081	1/4-28 Right Hand Nut	2	39	15118	3/8-16 Nylock Nut	1
10	ZP15030	1/4-28 Rod	2	40	107-17-3213	5/16-18 Set Screw	2
11	15086	1/4-28 Left Hand Nut	2	41	15054	1/4 x 1-1/4 Key Stock	1
12	103-17-4635	1/4-28 x 3" Turnbuckle	2	42	ZP15019	Drive Pulley	1
13	ZP16054	Control Rod	2	43	ZP15017	Drive Belt	1
14	106-17-4637	1/4-28 Ball Joint LH	2	44	ZP15020	Engine	1
15	X3-1520	Transmission Control Arm	2			(Includes Muffler)	
16	ZF15048	Hydro Tank Bracket	1	45	ZF1644	Spacer Plate	1
		(Not Shown)		46	103-17-4633	1/4-28 Right Hand	2
17	103-17-4429	Ball Stud	4			90 Knuckle	
18	15107	5/16-18 Flange Nut	4	47	425-103-174430	Dampener	2
19	ZP15047	Hydro Tank	2	48	ZP15041	Dampener Ball Stud	4
20	15102	1/4-20 x 3/4 Flange Bolt	4			(Not Shown)	
21	15101	1/4-20 Flange Nut	4	49	X3-72123ZT	Fan Pulley Kit	2
22	15083	Oetiker Clamp	4	50	LPRP-19XX	Right Hydro Pump	1
23	ZP15050	Hydro Hose	2	51	HPRP-19XX	Left Hydro Pump	1
24	HU002	Hydro Fitting	2	52	ZP15016	22 x 11-10 Drive	2
25	ZP15018	Oil Drain (Not Shown)	1			Tire and Rim	
26	ZP15049	Hydro Neutral Release	2	53	15088	1/2-20 Lug Nut	8
		Cable		54	15082	5/16 Lock Washer	2
27	15111	3/8-16 Flange Nut	10	55	103-17-4431	Dampener Clip	4
28	15087	3/8-16 x 2-1/2 Flange Bolt	8				

HYDROSTATIC COMPONENTS

REFER TO
CHASSIS
COMPONENTS



FAN AND PULLEY KIT #49

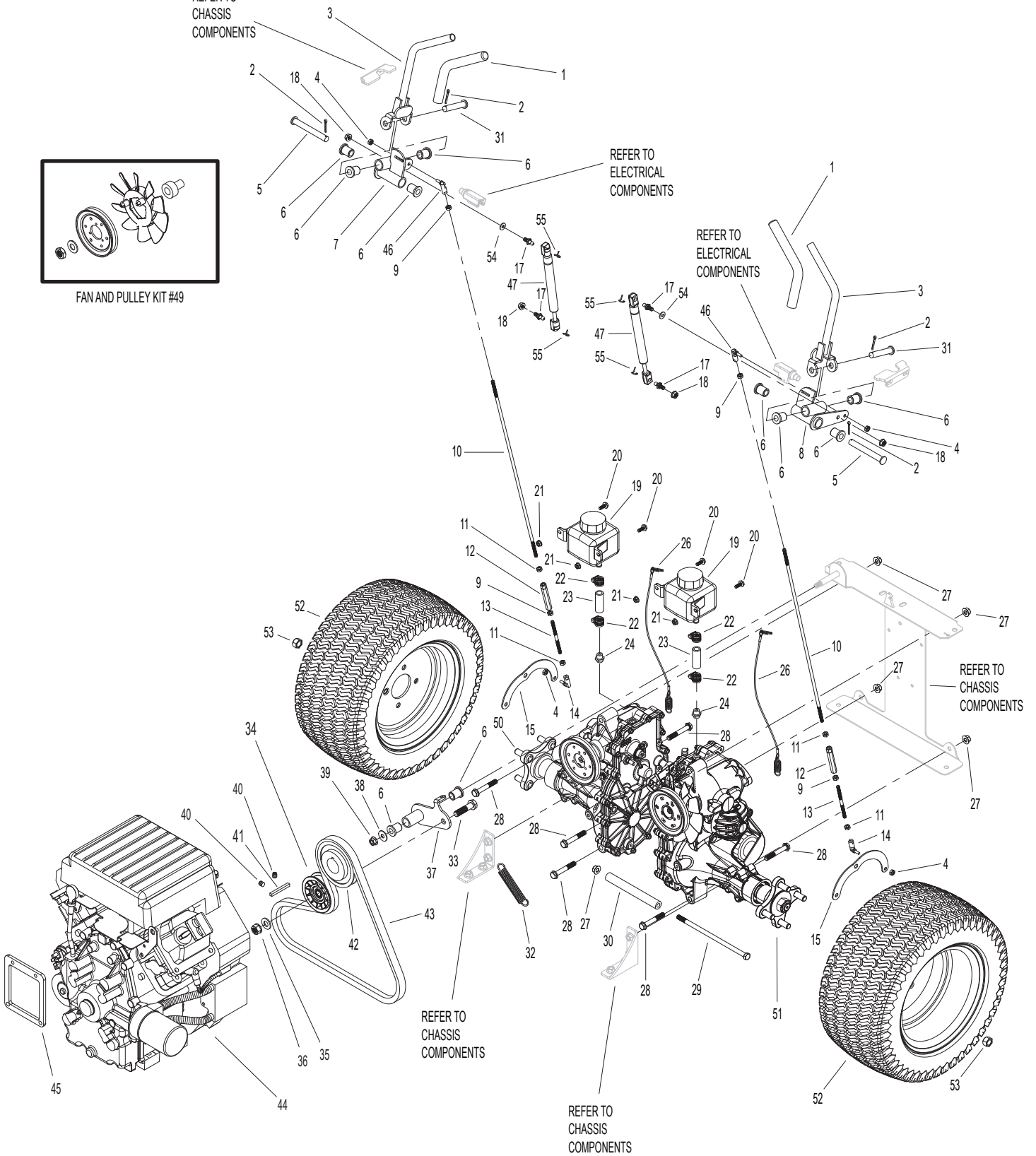
REFER TO
ELECTRICAL
COMPONENTS

REFER TO
ELECTRICAL
COMPONENTS

REFER TO
CHASSIS
COMPONENTS

REFER TO
CHASSIS
COMPONENTS

REFER TO
CHASSIS
COMPONENTS



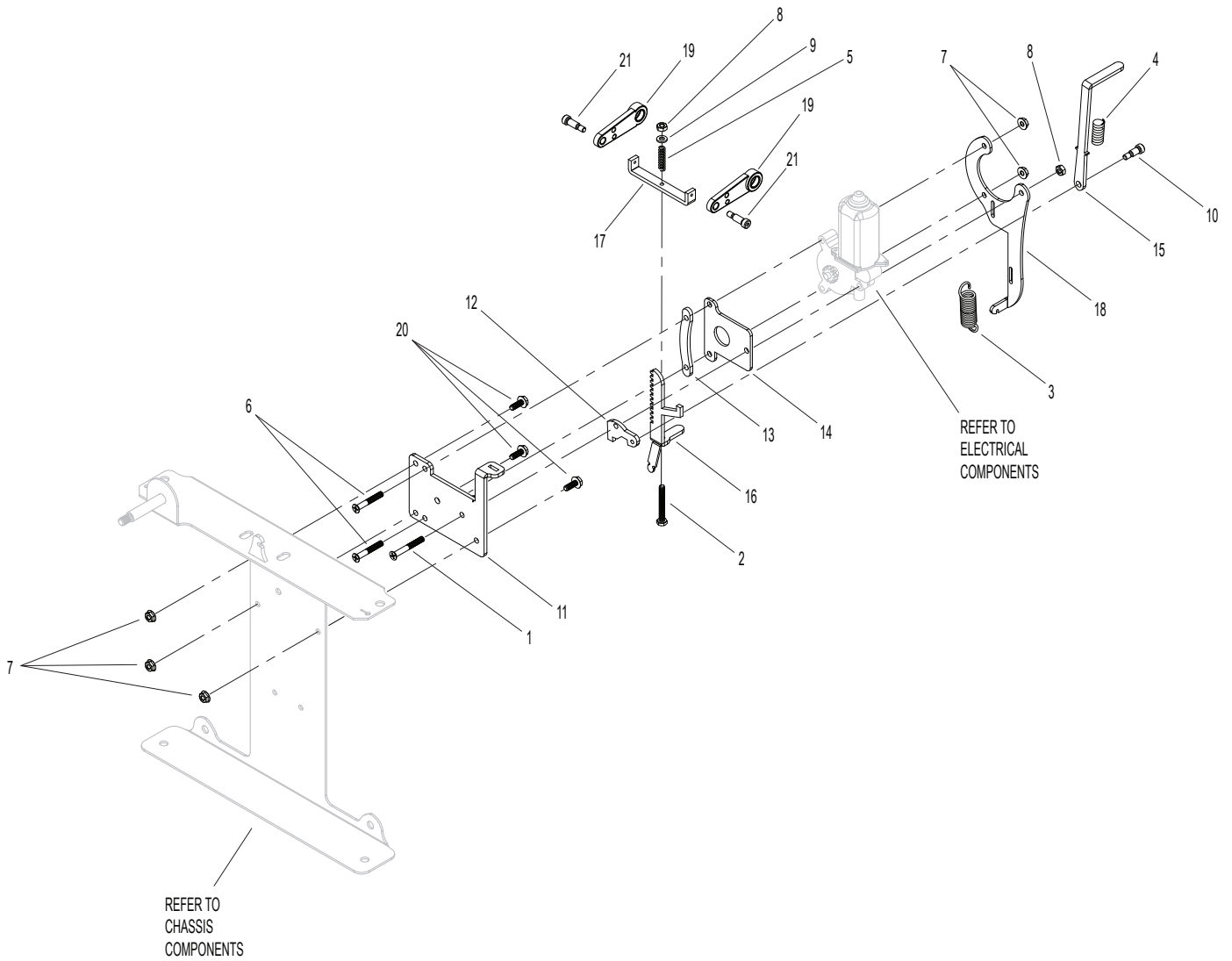
BRAKE ASSEMBLIES

Brakes

Hurricane Power

	Part Number	Description	Quantity		Part Number	Description	Quantity
1	15306	1/4-20 x 2 Phillips Head Machine	1	10	15310	5/16 x 1/2 Shoulder Bolt	1
2	15307	1/4-20 x 2 Hex Bolt	1	11	X3-1511	Brake Backing Plate	1
3	15128	#29 Extension Spring	1	12	X3-1512	Brake Cam	1
4	15308	#29 Compression Spring	1	13	X3-1513	Brake Spacer Plate	1
5	15309	#21 Compression Spring	1	14	X3-1514	Cam Cover Plate	1
6	15165	1/4-20 x 1-3/4 Phillips Head Machine Screw	2	15	ZF15053	Brake Release Arm	1
7	15101	1/4-20 Flange Nut	5	16	X3-1516	Brake Gear Rack	1
8	15067	1/4-20 Nylock Nut	2	17	X3-1517	Brake Lever Arm	1
9	15316	1/4 Flat Washer	1	18	X3-1518	Switch Mounting Plate	1
				19	X3-1519	Hydro Brake Arm	2
				20	15102	1/4-20 x 3/4 Flange Bolt	3
				21	153101	5/16 x 1-1/4 Shoulder Bolt	2

BRAKE ASSEMBLIES



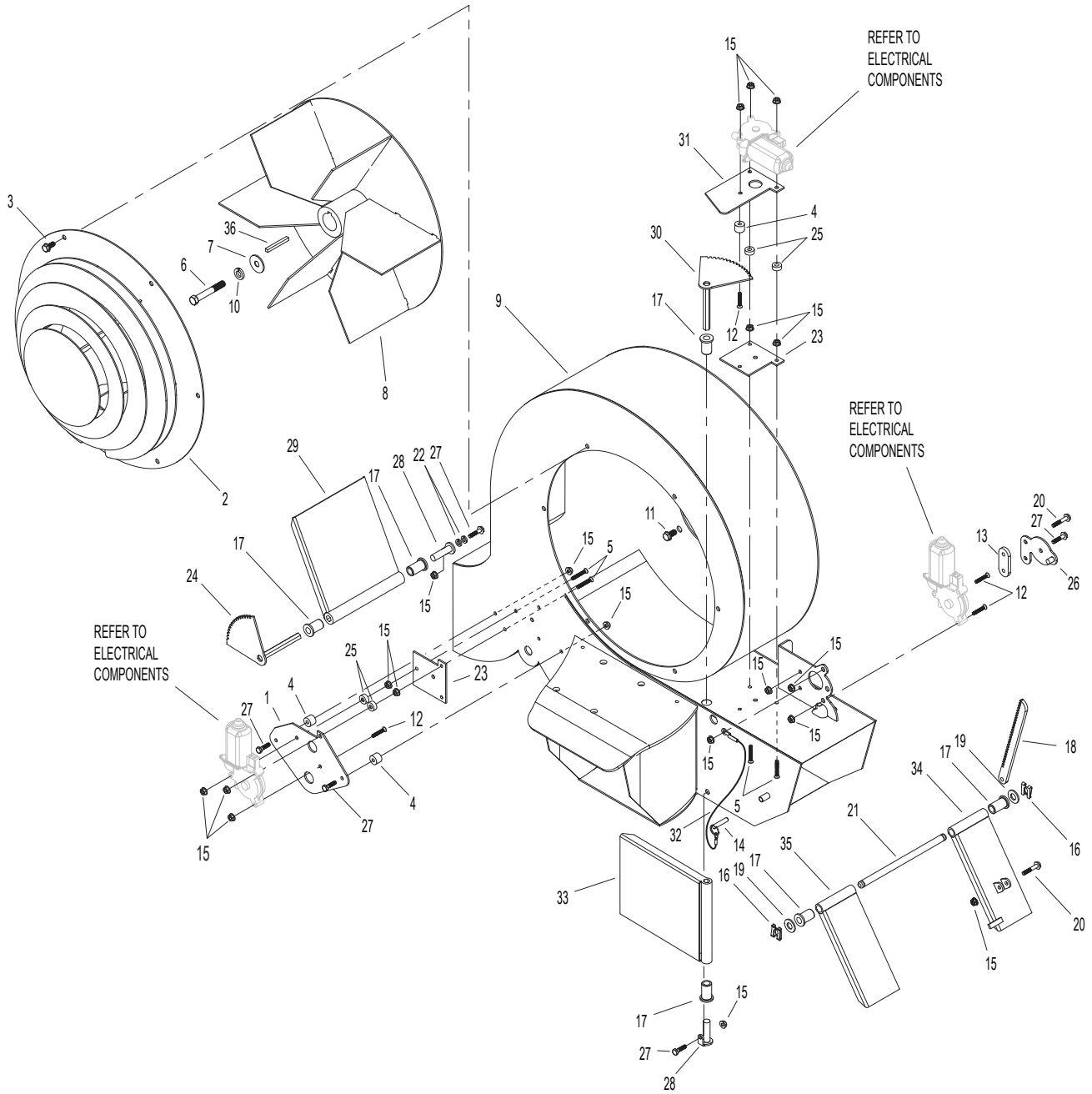
BLOWER COMPONENTS

Blower

Hurricane Power

	Part Number	Description	Quantity		Part Number	Description	Quantity
1	X310-2024	Right Deflector Cover Plate	1	19	15124	1/2 SAE Washer	2
2	ZF15015	Safety Cover	1	20	15103	1/4-20 x 1-1/2 Flange Bolt	2
3	15108	5/16-18 x 3/4 Flange Bolt	6	21	Z1415001	Deflector Support Rod	1
4	X310-2036	Spacer	3	22	15080	1/4" Lock Washer	4
5	15165	1/4-20 x 1-3/4 Phillips Head Screw	4	23	X310-2052	Deflector Spacer Plate	2
6	15092	7/16-20 x 1-1/2 Hex Bolt	1	24	X310-2039	Right Deflector Gear	1
7	425-1091-2009	Impeller Washer	1	25	15164	Spacer	4
8	ZF15018	Impeller	1	26	101-10-2028	Rack Keeper	1
9	ZF15006	Blower Housing	1	27	15102	1/4-20 x 3/4 Flange Bolt	5
10	15098	Lock Washer	1	28	X310-2040	Right Deflector Pin	2
11	15112	3/8-16 x 3/4 Flange Bolt	4	29	ZF15002	Right Deflector	1
12	15104	1/4-20 x 1-1/4 Phillips Head Screw	4	30	X310-2042	Forward Deflector Gear	1
13	101-16-2029	Rack Spacer	1	31	X310-2043	Forward Deflector Motor Mount	1
14	15158	Deflector Lock Pin	1	32	ZF15158	Deflector Lock Pin	1
15	15101	1/4-20 Flange Nut	19	33	ZF15003	Retaining Cable	1
16	101-17-6427	Safety Clip	2	34	ZF15004	Forward Deflector	1
17	0117-081216	1/2 Bushing	8	35	ZF15005	Left Power Deflector	1
18	101-16-1821	Deflector Rack	1	36	15051	Left Slave Deflector	1
						Key Stock	1

BLOWER COMPONENTS



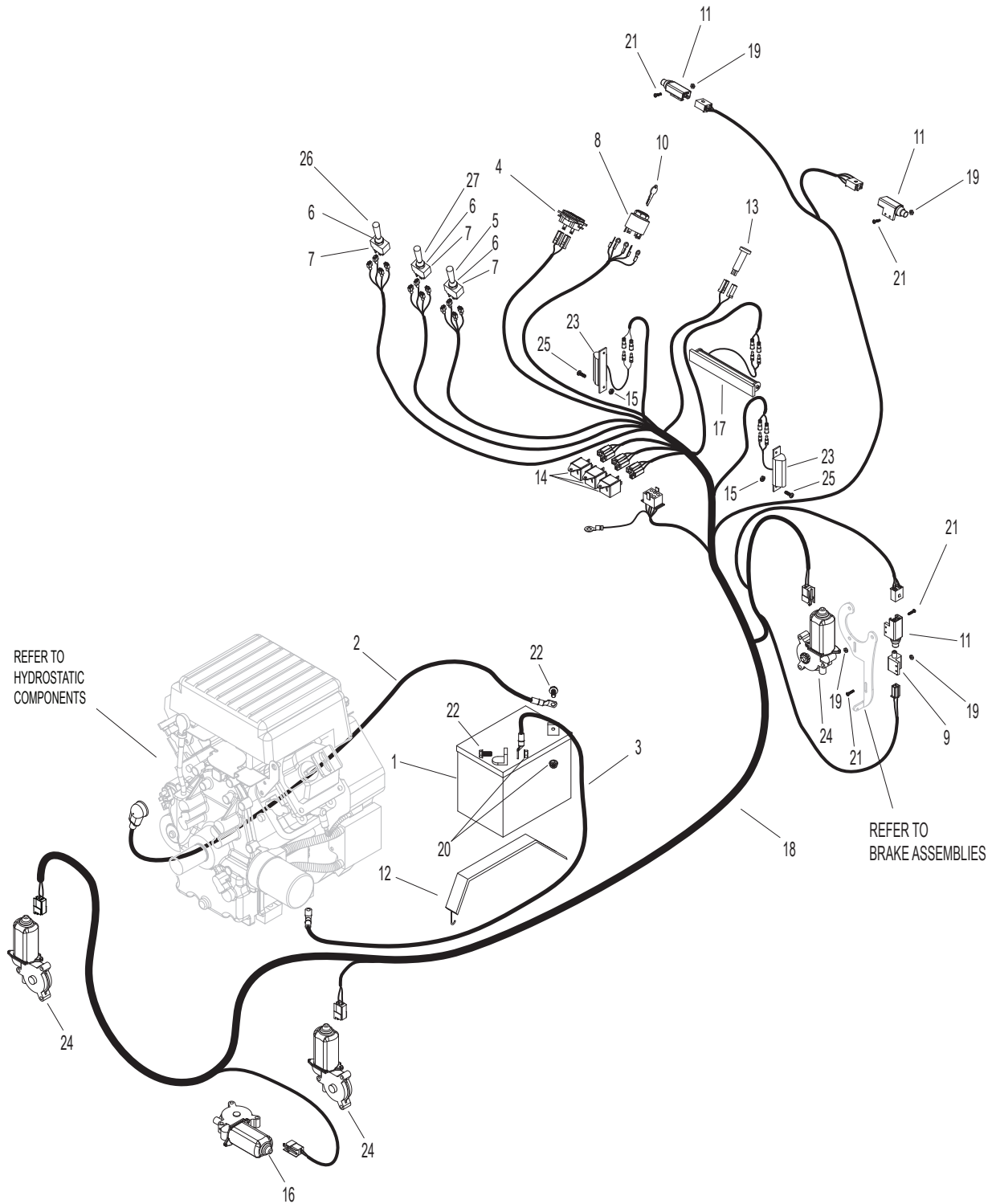
ELECTRICAL COMPONENTS

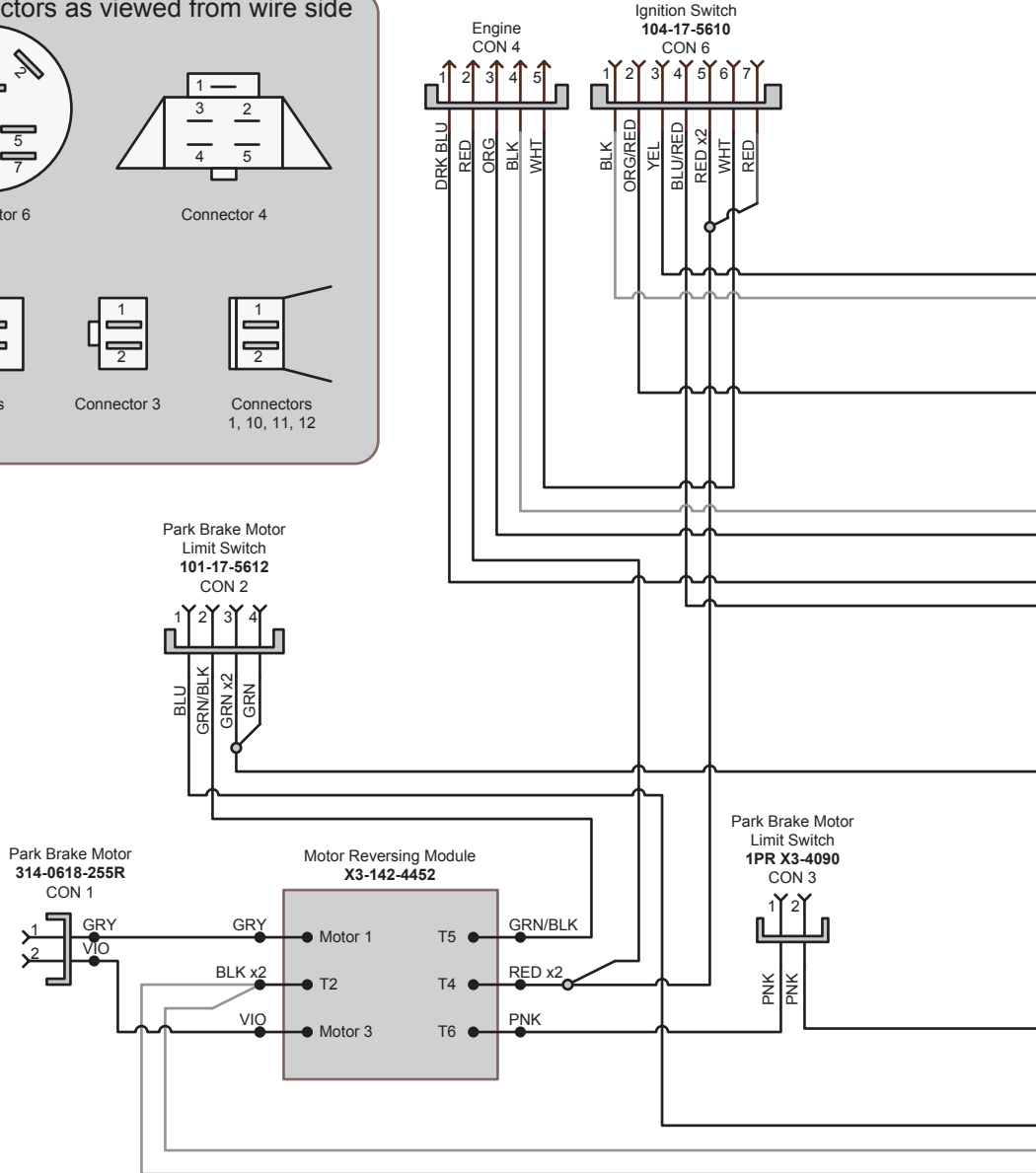
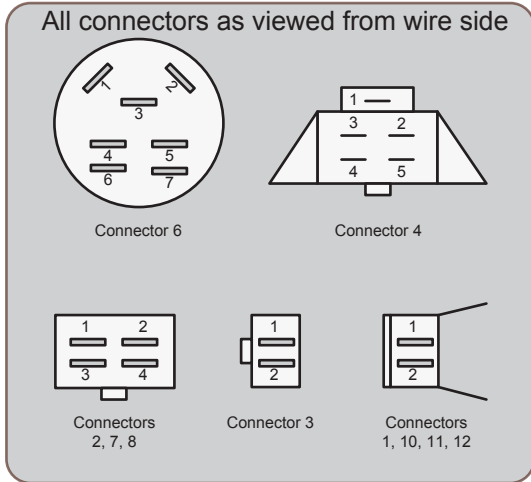
Electrical

Hurricane Power

Part Number	Description	Quantity	Part Number	Description	Quantity		
1	106-17-4001	U1 Battery	1	14	106-17-2817	Relay	3
2	X3-18-1802	Positive Battery Cable	1	15	15301	8-32 Nut	4
3	X3-18-1803	Negative Battery Cable	1	16	101-18-1802	Deflector Motor Left	1
4	104-17-5205	Tach	1	17	ZF1750	Headlight	1
	106-18-1804	Tach Harness	1	18	ZP15043	Main Wiring Harness	1
5	106-17-3005	Switch Extension (Red)	1	19	15106	10-32 Keps Nut	10
6	106-17-2806	Switch Seal	3	20	15107	5/16-18 Flange Nut	2
7	106-17-3007	Reversing Switch	3	21	15105	10-32 Machine Screw	10
8	104-17-5610	Ignition Switch (Snap In)	1	22	15108	5/16-18 x 3/4 Flange Bolt	2
9	X3-4090	Safety Switch (1 PR)	1	23	X3-84422	Side Headlight	2
10	104-17-5608	Ignition Switch Key	1	24	314-0618-255R	Deflector Motor Right	3
11	101-17-5612	Safety Switch 2P	3	25	15300	8-32 x S8 Machine Screw	4
12	16100	Battery Strap	1	26	18273	Switch Extension (Black)	1
13	104-17-2805	Warning Light	1	27	18272	Switch Extension (Yellow)	1

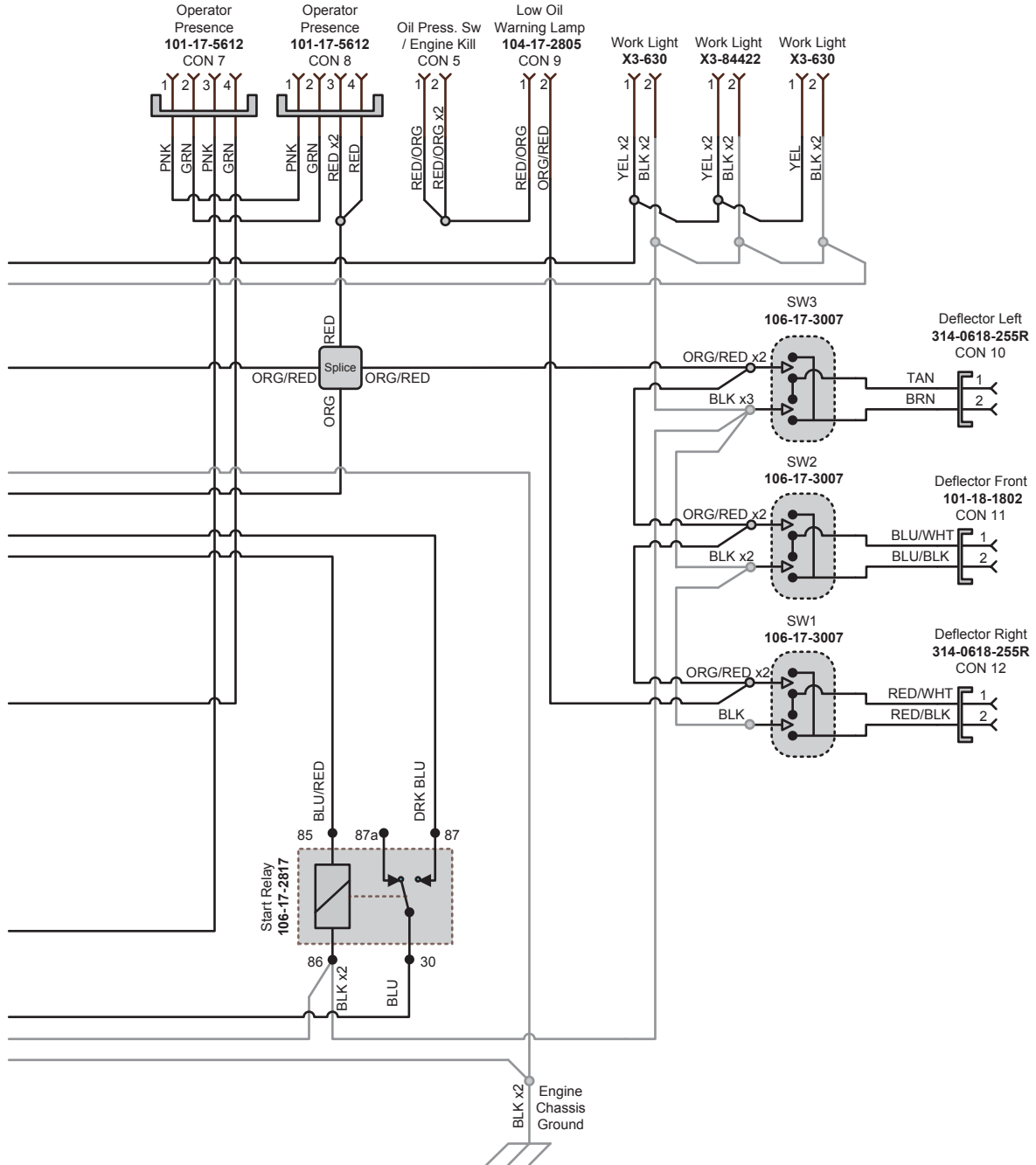
ELECTRICAL COMPONENTS





Rev: 07/01/2014

ELECTRICAL SCHEMATIC



Muskegon, MI