

# 7 Gallon Auxiliary Tank

## For Models with 60 Gallon Spray System

### Kit No. 135-6607

## Installation Instructions

## Safety

### Safety Alert Symbol

This Safety Alert Symbol (Figure 1) is used both in this instruction sheet and on the machine to identify important safety messages which must be followed to avoid accidents

This symbol means: **ATTENTION! BECOME ALERT! YOUR SAFETY IS INVOLVED!**



**Figure 1**  
Safety Alert Symbol

g000502

The safety alert symbol appears above information which alerts you to unsafe actions or situations and will be followed by the word **DANGER**, **WARNING**, or **CAUTION**.

**DANGER:** Indicates an imminently hazardous situation which, if not avoided, **Will** result in death or serious injury.

**WARNING:** Indicates a potentially hazardous situation which, if not avoided, **Could** result in death or serious injury.

**CAUTION:** Indicates a potentially hazardous situation which, if not avoided, **May** result in minor or moderate injury.

This manual uses two other words to highlight information. **Important** calls attention to special mechanical information and **Note** emphasizes general information worthy of special attention.

### ⚠ WARNING

While maintenance or adjustments are being made, someone could start the engine. Accidental starting of the engine could seriously injure you or other bystanders.

Remove the key from the ignition switch, engage parking brake, and pull the wire(s) off the spark plug(s) before you do any maintenance. Also push the wire(s) aside so it does not accidentally contact the spark plug(s).

**Note:** Determine the left and right sides of the machine from the normal operating position.

**Note:** Park the unit on a level surface. Make sure all moving parts have stopped, parking brake is engaged, the key has been removed, and the spark plug wire has been disconnected. Allow unit to cool before starting these instructions.

## General Safety

**Important:** Before starting these instructions:

- make sure to wear the appropriate Personal Protective Equipment (PPE) and follow all safety precautions as stated in the Operator's manual.
- make sure the entire spray system has been properly cleaned.

### ⚠ CAUTION

Chemicals are hazardous and can cause personal injury.

- Read the directions on the chemical labels before handling the chemicals and follow all manufacturer recommendations and precautions.
- Keep chemicals away from your skin. Should contact occur, wash the affected area thoroughly with soap and clean water.
- Wear goggles, gloves, and any other protective equipment recommended by the chemical manufacturer.



# Loose Parts

Use the chart below to verify that all parts have been shipped.

Item No.	Part No.	Description	Qty
1		Asm-Tank	1
2	135-6110	Nut-Hex Flg 3/8-16 SS	4
3	135-5741	Fitting-Nipple [3/4 X 3/4]	2
4	135-6004	Fitting-Tee	2
5	41257	Barb-Hose	1
6	135-6598	Fitting-Straight	1

Item No.	Part No.	Description	Qty
7	135-5772	Fitting-Elbow, 90 [3/4 MPT X 3/4 Hose barb]	1
8	2412-129	Clamp-Hose	4
9	126-0980	Screw-Carriage 3/8-16 x 1.00 SS	4
10	3290-378	Tie-Cable	3
99*	135-6480	Hose-Spray Wrapped	1

\*Not Illustrated

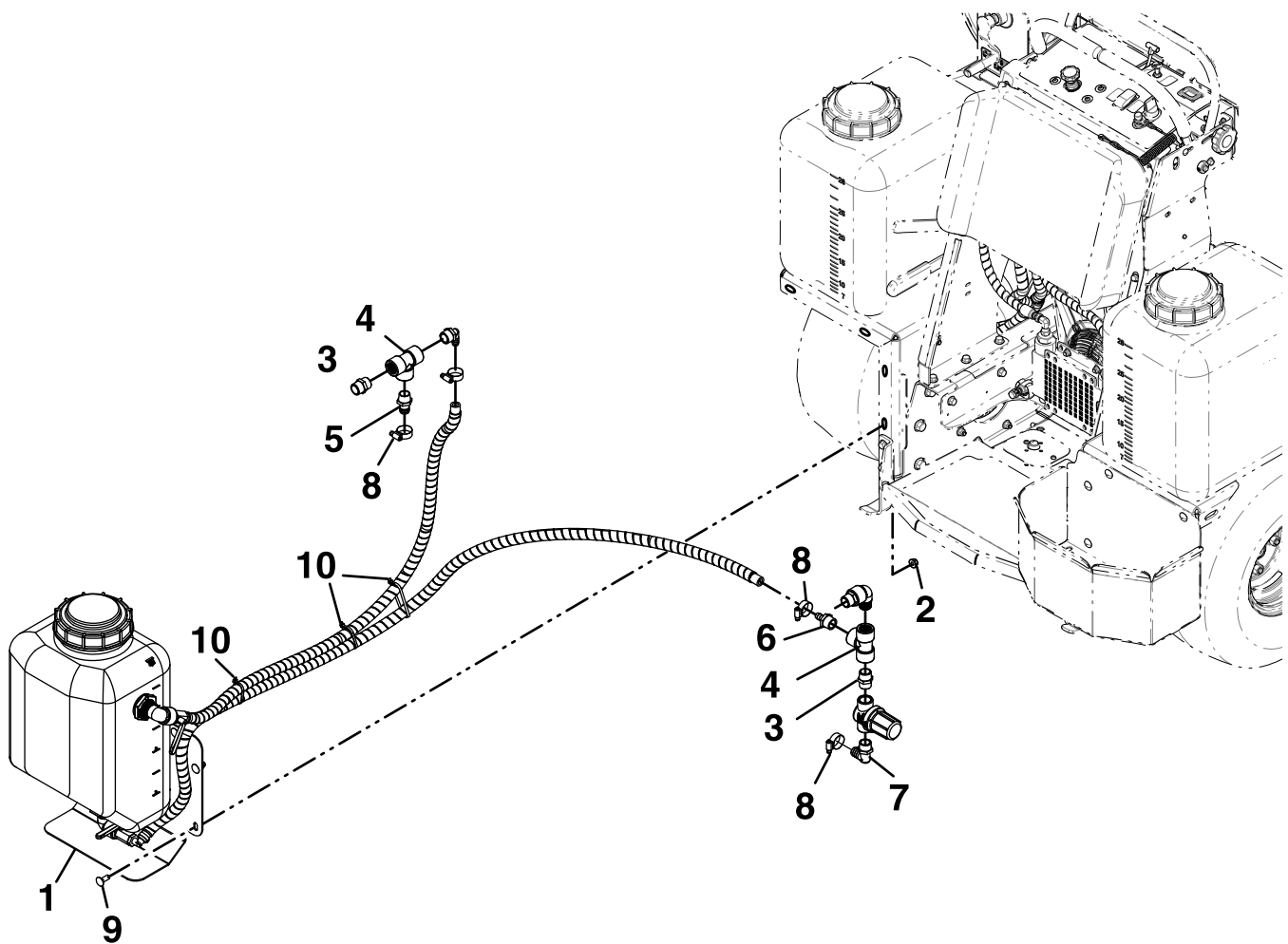


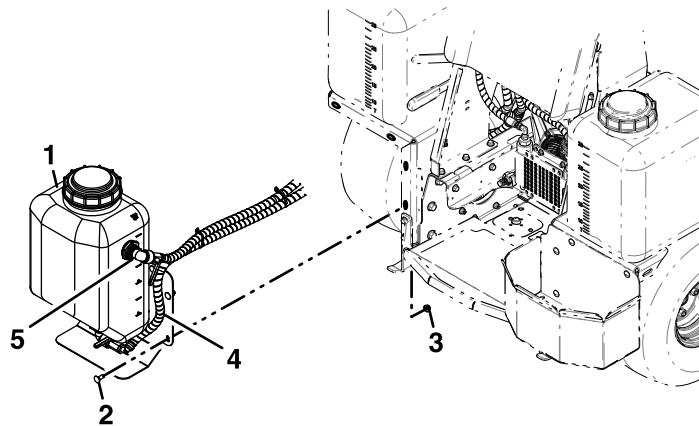
Figure 2

g278515

# Installation Instructions

**Note:** When assembling fittings, use pipe sealant on all pipe threads.

1. Stop engine, wait for all moving parts to stop, engage the parking brake remove the key, and disconnect the negative battery cable.
2. Remove and retain the left fertilizer box and its mounting hardware.
3. Install the tank assembly to the frame using four 3/8–16 x 1 inch carriage bolts and four 3/8 inch nyloc flanged nuts as shown in [Figure 3](#).

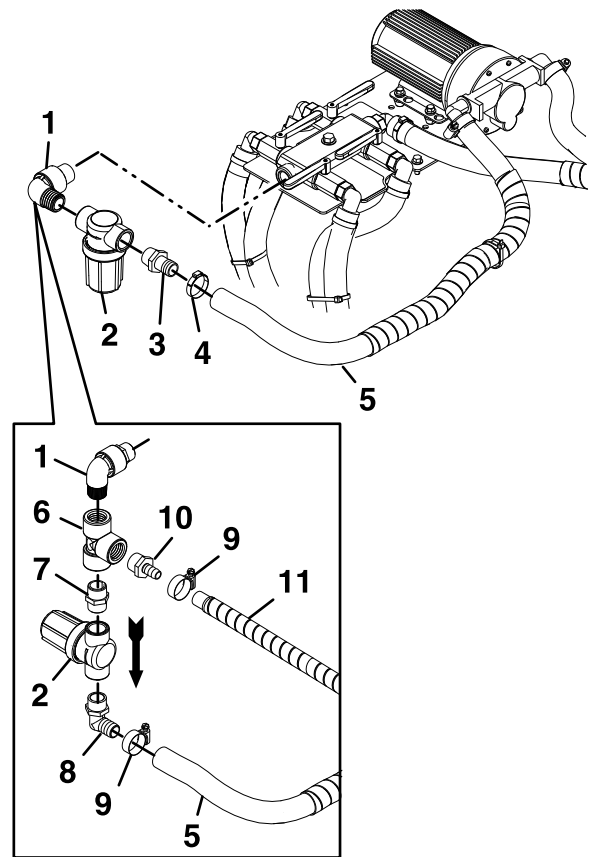


**Figure 3**

Shown with valve in “OFF” position

- |                                  |                     |
|----------------------------------|---------------------|
| 1. Tank assembly                 | 4. Aux suction hose |
| 2. 3/8–16 x 1 inch carriage bolt | 5. Aux return hose  |
| 3. 3/8 inch nyloc flanged nut    |                     |

4. Remove the clamp and slit the hose that connects to the strainer. Remove and retain the straight fitting from the strainer (see [Figure 4](#)). Rotate the strainer and elbow fitting clockwise 90 degrees. Unscrew the strainer from the elbow fitting.



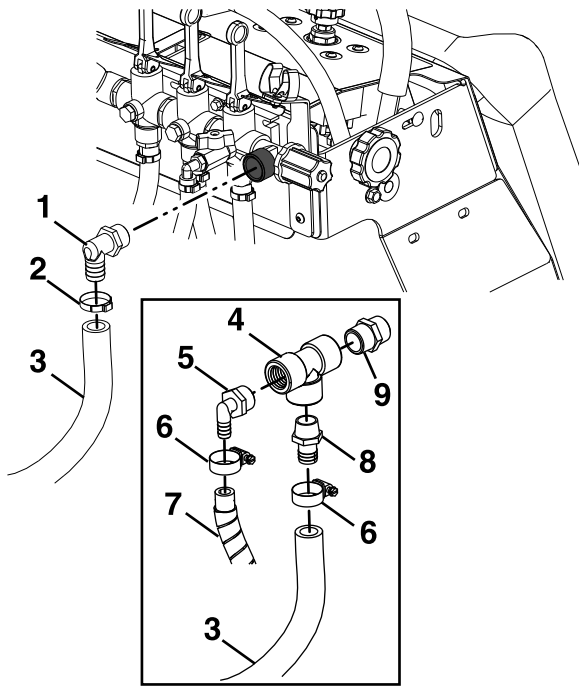
**Figure 4**

- |                                 |   |
|---------------------------------|---|
| 1. Elbow fitting                | 7. Nipple fitting (3/4 x 3/4)                     |
| 2. Strainer (arrow points down) | 8. New elbow fitting (3/4 MPT x 3/4 hose barb)    |
| 3. Straight fitting             | 9. New hose clamp                                 |
| 4. Clamp                        | 10. New straight fitting 3/4 MPT x 1/2 hose barb) |
| 5. Spray hose                   | 11. Tank assembly hose                            |
| 6. Tee fitting (3/4 FPT)        |   |

5. Install the tee fitting onto the elbow fitting as shown in [Figure 4](#). Insert the nipple fitting and new elbow fitting into the strainer ports. Assemble the strainer assembly to the tee fitting; make sure the arrow is pointing down. Place the clamp on the spray hose and insert the spray hose onto the new elbow fitting. Install the new straight fitting into the tee fitting port. Install a hose clamp onto the tank assembly hose and insert the hose onto the tee fitting port. Tighten the two clamps to secure the hoses to the fittings.

**Note:** If needed, a longer hose has been provided for item 5 shown in [Figure 4](#). This hose will have to be cut down for proper fit.

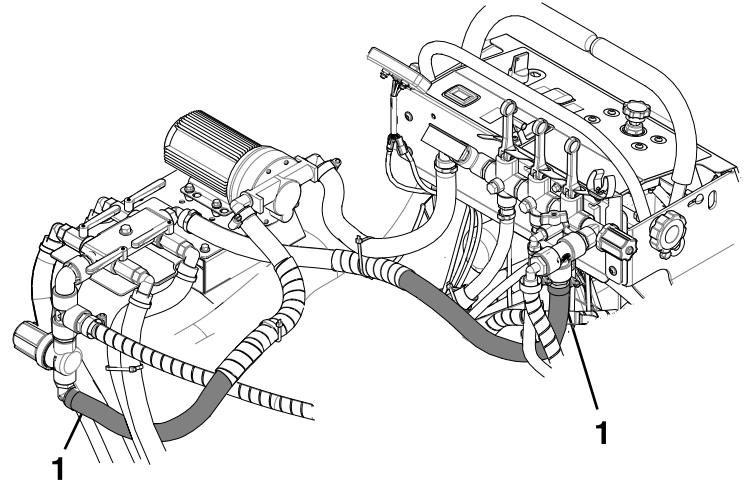
6. Remove the clamp and slit the hose that connects to the LH manifold spray valve. Remove and retain the elbow fitting from the hose (see [Figure 5](#)).



**Figure 5**

- |  |   |
|--|---|
| 1. Elbow fitting                               | 6. New hose clamp                                 |
| 2. Clamp                                       | 7. Aux return hose                                |
| 3. Spray hose                                  | 8. New straight fitting (3/4 MPT x 3/4 hose barb) |
| 4. Tee fitting (3/4 FPT)                       | 9. Nipple fitting (3/4 x 3/4)                     |
| 5. New elbow fitting (3/4 NPT x 1/2 hose barb) |   |

- Assemble the fittings to the tee fitting and install into the LH manifold spray valve as shown in Figure 5. Install a new hose clamp onto the spray hose and one on aux return hose. Connect the hoses to the fittings and tighten the clamps (reference Figure 6).



**Figure 6**

- Spray hose assembled with new connector
- 
- Zip tie hoses away from the belt and other moving parts.
  - Reconnect the negative battery cable.
  - Add pure clean water to the 7 gallon tank. Turn the ignition key to ON and then operate the spray system and check for leaks. Repair all leaks before returning the sprayer to service.

**Note:** When using the auxiliary tank, make sure the suction valve is "ON" and the return valve is "ON"

# Parts List

Item No.	Part No.	Description	Qty
1	135-6240	Mount-Aux/Iso, 7gal	1
2	135-6599	Asm-Tank, Aux/Iso	1
3	126-0980	Screw-Carriage 3/8-16 x 1.00 SS	4
4	135-6110	Nut-Hex Flg 3/8-16 SS w/patch	4
5	135-7096	Screw-HHF 3/8-16 X 1/2 SS	4
6	132-7706	Elbow-90deg [3/4 NPT]	2
7	41969	Reducer-Bushing, Plastic	2
8	135-5760	Valve-Chrome, 1/2 [N90fml12]	2
9	120-8673	Fitting-Elbow, Hose barb	1
10	120-8671	Fitting-Hose barb [1/2]	1
11	135-5741	Fitting-Nipple [3/4 X 3/4]	2

Item No.	Part No.	Description	Qty
12	135-6004	Fitting-Tee	2
13	135-5744	Fitting-Elbow, 90 [3/4 NPT - 1/2 Hose barb]	1
14	41257	Barb-Hose	1
15	135-6605	Hose-Spray, Wrapped [.50 Id X 75]	1
16	135-6598	Fitting-Straight [Barb-8, NPTF-12]	1
17	135-6604	Hose-Spray, Wrapped [.50 Id X 50]	1
18	135-5692	Clamp-Oetiker,	2
19	3290-378	Tie-Cable	3
20	135-5772	Fitting-Elbow, 90 [3/4 MPT X 3/4 Hose barb]	1
21	2412-129	Clamp-Hose	4
99*	135-6480	Hose-Spray Wrapped	1

\*Not Illustrated

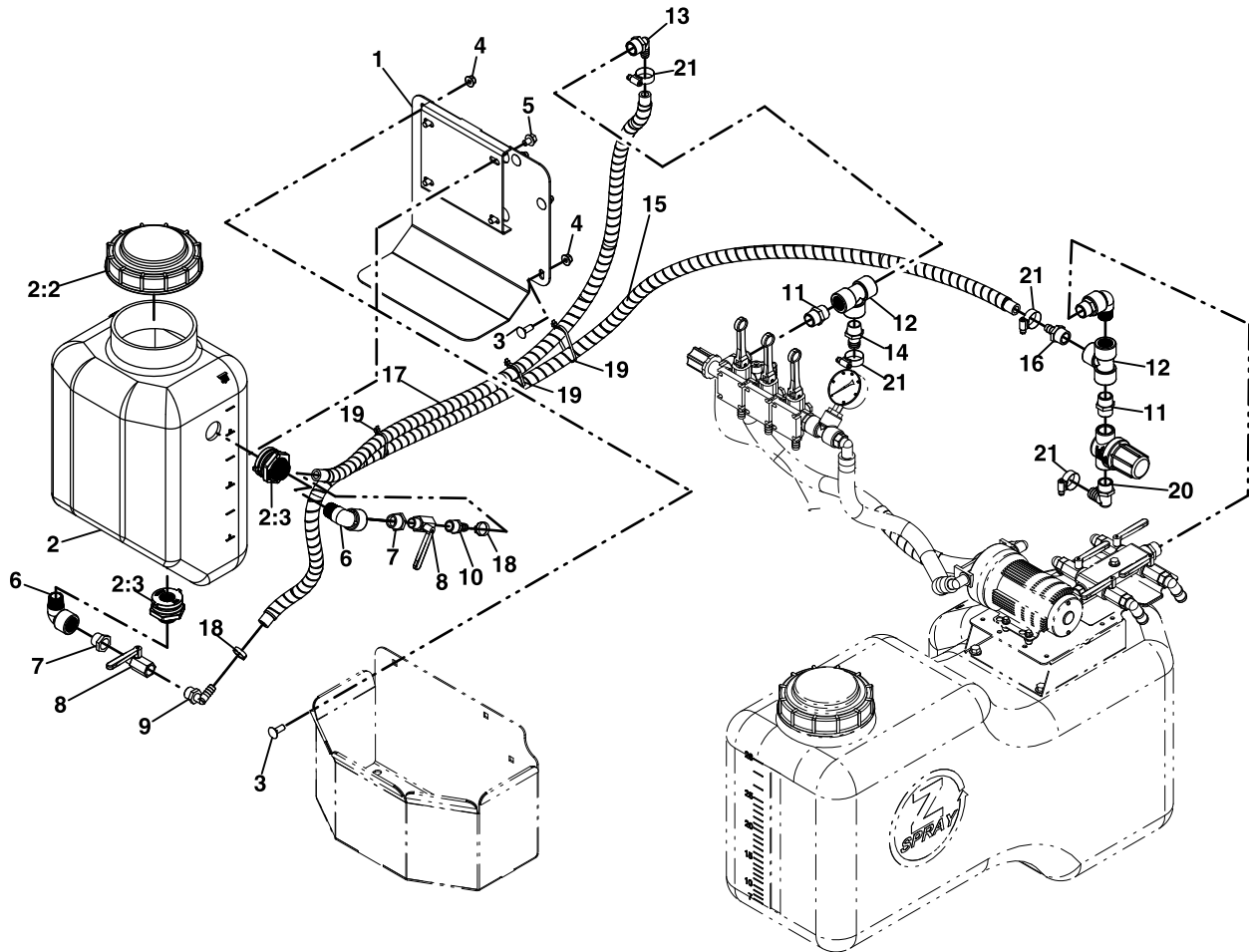


Figure 7

g278437