

30 Gallon Auxiliary Tank

For 46 and 52 inch Wide Models

Kit No. 135-6627

Installation Instructions

Safety

Safety Alert Symbol

This Safety Alert Symbol (Figure 1) is used both in this instruction sheet and on the machine to identify important safety messages which must be followed to avoid accidents

This symbol means: **ATTENTION! BECOME ALERT! YOUR SAFETY IS INVOLVED!**



Figure 1
Safety Alert Symbol

g000502

The safety alert symbol appears above information which alerts you to unsafe actions or situations and will be followed by the word **DANGER**, **WARNING**, or **CAUTION**.

DANGER: Indicates an imminently hazardous situation which, if not avoided, **Will** result in death or serious injury.

WARNING: Indicates a potentially hazardous situation which, if not avoided, **Could** result in death or serious injury.

CAUTION: Indicates a potentially hazardous situation which, if not avoided, **May** result in minor or moderate injury.

This manual uses two other words to highlight information. **Important** calls attention to special mechanical information and **Note** emphasizes general information worthy of special attention.

⚠ WARNING

While maintenance or adjustments are being made, someone could start the engine. Accidental starting of the engine could seriously injure you or other bystanders.

Remove the key from the ignition switch, engage parking brake, and pull the wire(s) off the spark plug(s) before you do any maintenance. Also push the wire(s) aside so it does not accidentally contact the spark plug(s).

Note: Determine the left and right sides of the machine from the normal operating position.

Note: Park the unit on a level surface. Make sure all moving parts have stopped, parking brake is engaged, the key has been removed, and the spark plug wire has been disconnected. Allow unit to cool before starting these instructions.

General Safety

Important: Before starting these instructions:

- make sure to wear the appropriate Personal Protective Equipment (PPE) and follow all safety precautions as stated in the Operator's manual.
- make sure the entire spray system has been properly cleaned.

⚠ CAUTION

Chemicals are hazardous and can cause personal injury.

- Read the directions on the chemical labels before handling the chemicals and follow all manufacturer recommendations and precautions.
- Keep chemicals away from your skin. Should contact occur, wash the affected area thoroughly with soap and clean water.
- Wear goggles, gloves, and any other protective equipment recommended by the chemical manufacturer.



Loose Parts

Item No.	Part No.	Description	Qty
1	135-5772	Fitting-Elbow	1
2	135-6109	Nut-Hex Flg 5/16-18 Nyloc SS	8
3	135-6272	Screw-HHF 5/16-18 x 1 SS	8
4	135-5741	Fitting-Nipple	2
5	135-6004	Fitting-Tee	2
6	41969	Reducer-Bushing, Plastic	2
7	135-5760	Valve-Chrome, 1/2	2

Item No.	Part No.	Description	Qty
8	135-5742	Fitting-Nipple [3/4 x 1/2]	2
9	135-6626	Adapter-Male	2
10	41257	Hose-Barb	1
11	2412-129	Clamp-Hose	2
99*	3290-378	Tie-Cable	3
99*	135-6480	Hose-Spray Wrapped	1

*Not illustrated

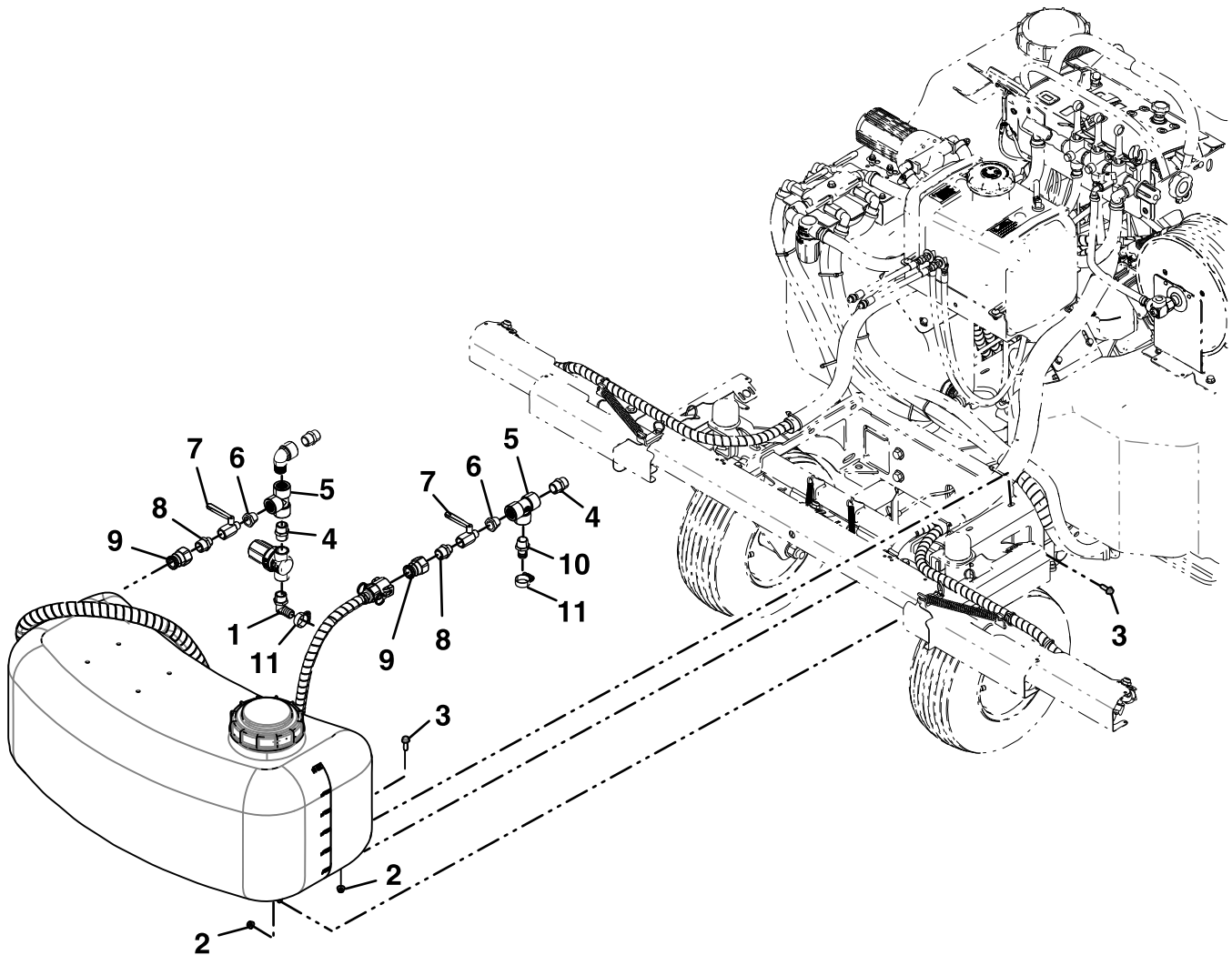


Figure 2

g277949

Installation Instructions

Note: When assembling fittings, use pipe sealant on all pipe threads.

1. Stop engine, wait for all moving parts to stop, engage the parking brake remove the key, and disconnect the negative battery cable.
2. Remove the cables.
 - For the center and right cables, loosen the nuts all the way off the backside of the bracket. Pull cable out to the smallest point and slide out of the bracket.
 - For the left cable, pull the handle out and loosen the nut on the front side of the bracket off the threads. Push the cable down to the smallest point and slide it off the bracket.

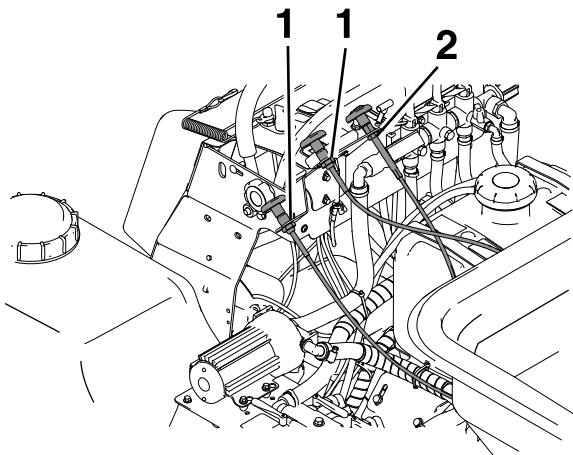


Figure 3

g279412

1. Center and right cable
2. Left cable

3. Place a rag under the rear and inner hopper fittings. Securely grab the inner hose end and loosen the rear hopper fitting. Disconnect the two hopper hoses.

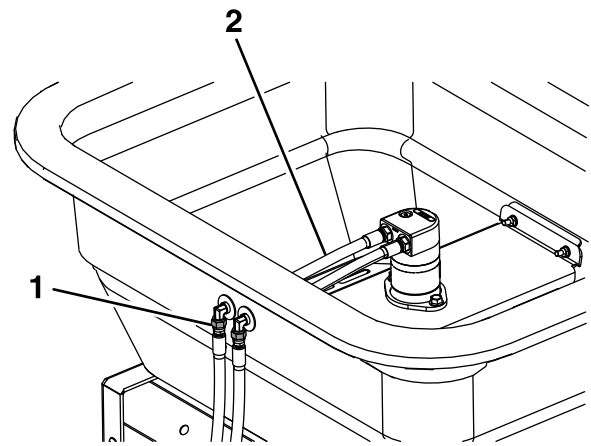


Figure 4

g279417

1. Left rear hopper fitting
2. Left inner hose (disconnect here)

4. Remove the four bolts and nuts on each side of the machine that mount the hopper to the frame (see [Figure 5](#)). Remove and retain the hopper assembly.

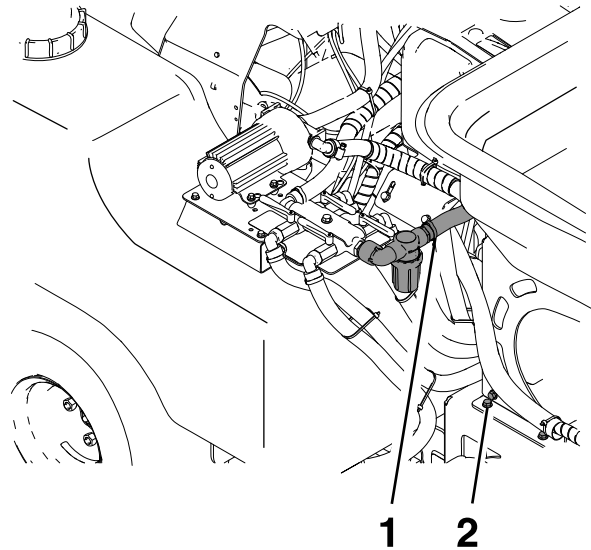


Figure 5

g277993

1. Cut hose and clamp
2. Frame bolts

5. Remove the clamp and slit the hose that connects to the strainer. Remove and retain the straight fitting from the strainer (see [Figure 6](#)). Rotate the strainer and elbow fitting clockwise 90 degrees. Unscrew the strainer from the elbow fitting.

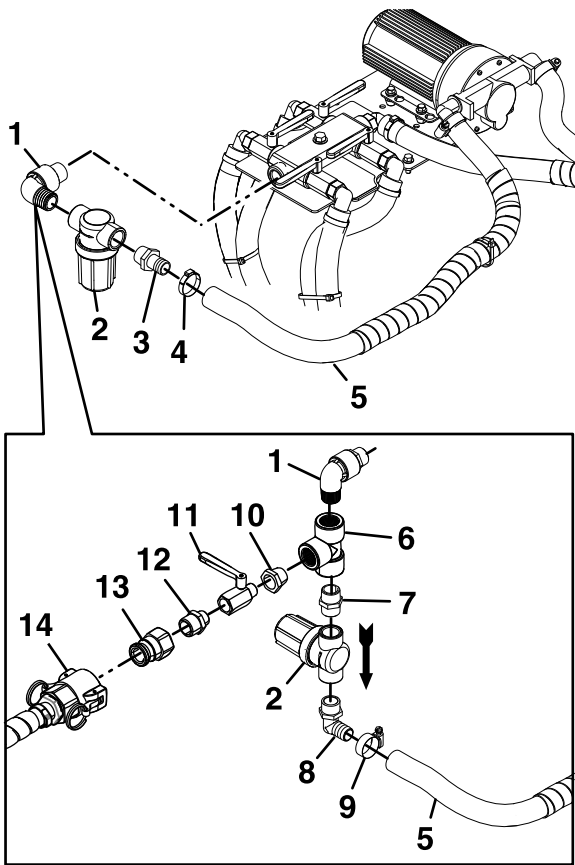


Figure 6

g279675

- | | |
|---------------------------------|--|
| 1. Elbow fitting | 8. New elbow fitting (3/4 MPT x 3/4 HB) |
| 2. Strainer (arrow points down) | 9. New hose clamp |
| 3. Straight fitting | 10. New straight fitting (3/4 NPT x 1/2 NPT) |
| 4. Clamp | 11. Valve |
| 5. Spray hose | 12. Nipple fitting (3/4 x 1/2) |
| 6. Tee fitting (3/4 FPT) | 13. Adapter |
| 7. Nipple fitting (3/4 x 3/4) | 14. Aux suction hose |

- Install the tee fitting onto the elbow fitting as shown in [Figure 6](#). Insert the nipple fitting and new elbow fitting into the strainer ports. Assemble the strainer assembly to the tee fitting; make sure the strainer flow arrow is pointing down. Place the clamp on the spray hose and insert the spray hose onto the new elbow fitting. Tighten the clamp to secure the hoses to the fitting. Install the new straight fitting into the tee fitting port.

Note: If needed, a longer hose has been provided for item 5 shown in [Figure 6](#). This hose will have to be cut down for proper fit.

- Assemble the valve, fittings, and adapter and install into the tee fitting. Attach the adapter (item 13 in [Figure 6](#)) to the tank hose.

- Remove the clamp and slit the hose that connects to the LH manifold spray valve. Remove and retain the elbow fitting from the hose (see [Figure 7](#)).

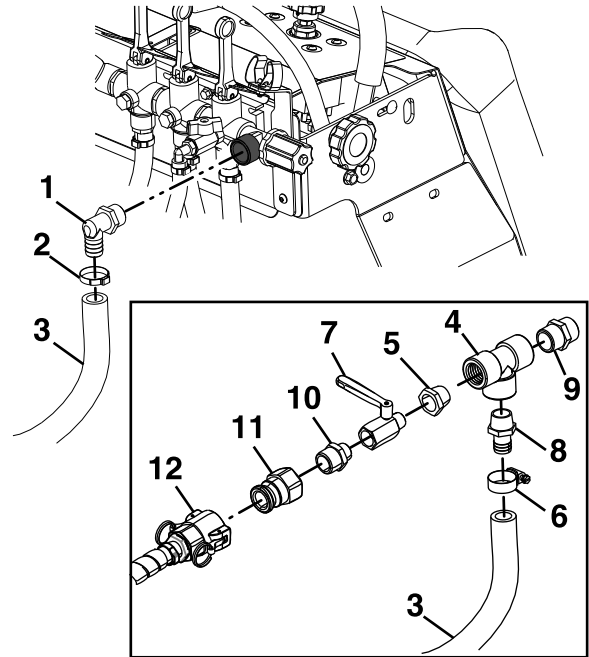
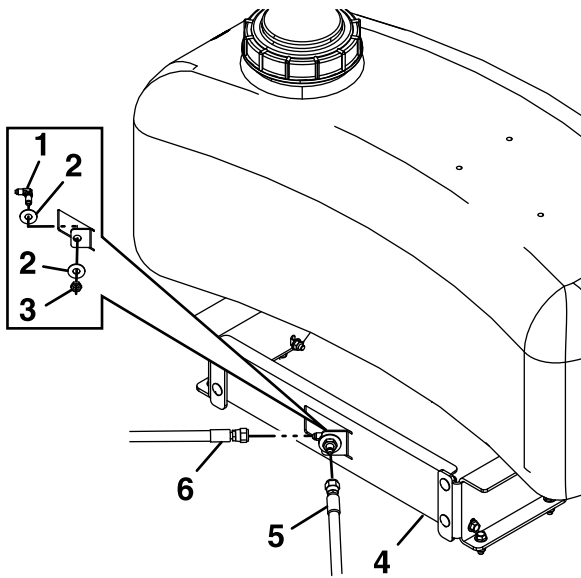


Figure 7

g279686

- | | |
|------------------------------------|--------------------------------------|
| 1. Elbow fitting | 7. Valve |
| 2. Clamp | 8. Nipple fitting (3/4 MPT x 3/4 HB) |
| 3. Spray hose | 9. Adapter (3/4 x 3/4) |
| 4. Tee fitting (3/4 FPT) | 10. Nipple fitting (1/2 x 3/4) |
| 5. New fitting (3/4 NPT x 1/2 NPT) | 11. Adapter |
| 6. New hose clamp | 12. Aux return hose |

- Assemble the fittings to the tee fitting and install into the LH manifold spray valve as shown in [Figure 7](#). Tighten the clamp to secure the hose to the fitting. Install the new straight fitting into the tee fitting port.
- Assemble the valve, fittings, and adapter and install into the tee fitting. Attach the adapter (item 11 in [Figure 7](#)) to the tank hose.
- Using eight 5/16-18 x 1 inch screws and 5/16-18 flanged nyloc nuts, install the auxiliary tank frame assembly onto the machine (reference [Figure 9](#)).
- Attach the bulk head fitting as shown in [Figure 8](#) to the front tank mount.



g279460

Figure 8

- | | |
|-------------------------|---------------------|
| 1. Bulk head fitting | 4. Front tank mount |
| 2. Washer | 5. RH hose |
| 3. 7/16-20 inch jam nut | 6. LH hose |

-
13. Attach the hose ends from step 3 to the bulk head fitting.
 14. Zip tie hoses away from the belt and other moving parts.
 15. Reconnect the negative battery cable.
 16. Add pure clean water to the tank.
 17. Turn the ignition key to ON and then operate the spray system and check for leaks. Repair all leaks before returning the sprayer to service.

Note: When using the auxiliary tank, make sure the suction valve is “ON” and the return valve is “ON”.

Parts List

Item No.	Part No.	Description	Qty
1	135-6619	Mount-Tank, Aux Front	1
2	135-6617	Mount-Tank, Left Aux	1
3	135-6618	Mount-Tank, Right Aux	1
4	135-6620	Asm-Tank, 30 Gal	1
4:2	126-4393	Fitting-Bulkhead	2
4:3	135-5916	Cap-Tank, Spray	1
5	135-6274	Screw-HHF 3/8-16 x 3/4 SS	4
6	135-5744	Fitting-Elbow	1
7	135-5772	Fitting-Elbow	2
8	126-0695	Screw-Carriage 5/16-18 x 3/4 SS	4
9	135-6109	Nut-Hex Flg 5/16-18 Nyloc SS	12
10	135-5586	Washer-SS	2
11	3220-4	Nut-Jam 7/16-20	1
12	135-5796	Fitting-Elbow	1
13	135-6272	Screw-HHF 5/16-18 x 1 SS	8
14	135-5741	Fitting-Nipple	2

Item No.	Part No.	Description	Qty
15	135-6004	Fitting-Tee	2
16	41969	Reducer-Bushing, Plastic	2
17	135-5760	Valve-Chrome, 1/2	2
18	135-5742	Fitting-Nipple [3/4 x 1/2]	2
19	135-6626	Adapter-Male	2
20	41257	Hose-Barb	2
21	135-6622	Coupler-Female	2
22	135-6598	Fitting-Straight	1
23	135-6625	Hose-Spray, Wrapped-.75 ID x 45	1
24	135-6604	Hose-Spray, Wrapped-.50 ID x 50	1
25	135-5890	Clamp-Oetiker	2
26	135-5692	Clamp-Oetiker	2
27	2412-129	Clamp-Hose	2
99*	3290-378	Tie-Cable	3
99*	135-6480	Hose-Spray Wrapped	1

*Not illustrated

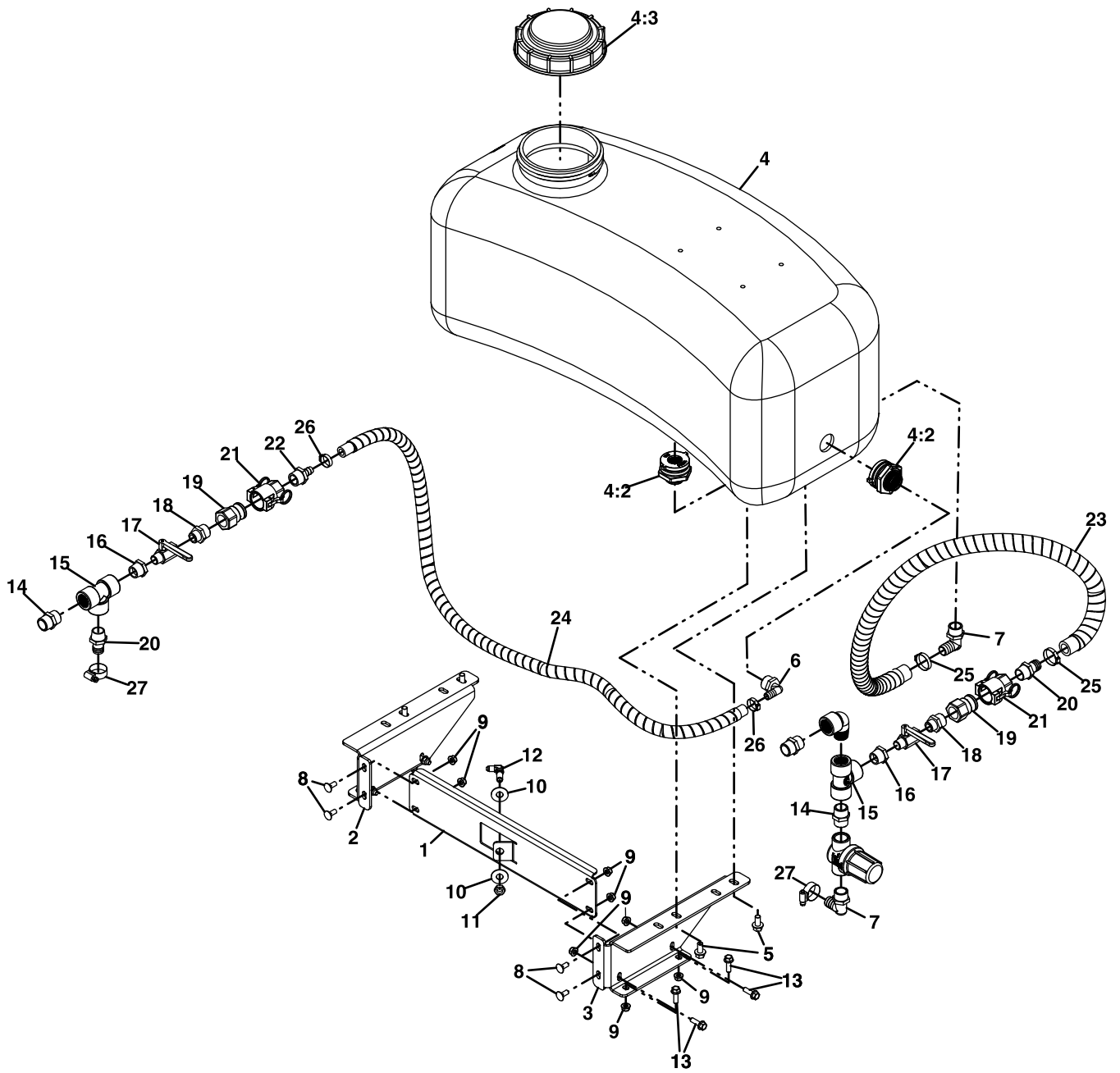


Figure 9

g277961