



Z-Plug

Parts Guide

2018 & Newer



TABLE OF CONTENTS

ENGINE

| | |
|------------------------------|---|
| Z-Plug Engine Assembly | 3 |
|------------------------------|---|

FRAME

| | |
|-----------------------------|---|
| Z-Plug Frame Assembly | 4 |
|-----------------------------|---|

PARK BRAKE

| | |
|---------------------------------|---|
| Z-Plug Park Brake Assembly..... | 7 |
|---------------------------------|---|

FUEL SYSTEM

| | |
|----------------------------|---|
| Z-Plug Fuel Assembly | 9 |
|----------------------------|---|

HYDRO

| | |
|--|----|
| Z-Plug Auxiliary Hydraulics Assembly | 10 |
|--|----|

MOTION CONTROL

| | |
|-------------------------------------|----|
| Z-Plug Control Tower Assembly | 13 |
|-------------------------------------|----|

GROUND DRIVE

| | |
|------------------------------------|----|
| Z-Plug Ground Drive Assembly | 14 |
|------------------------------------|----|

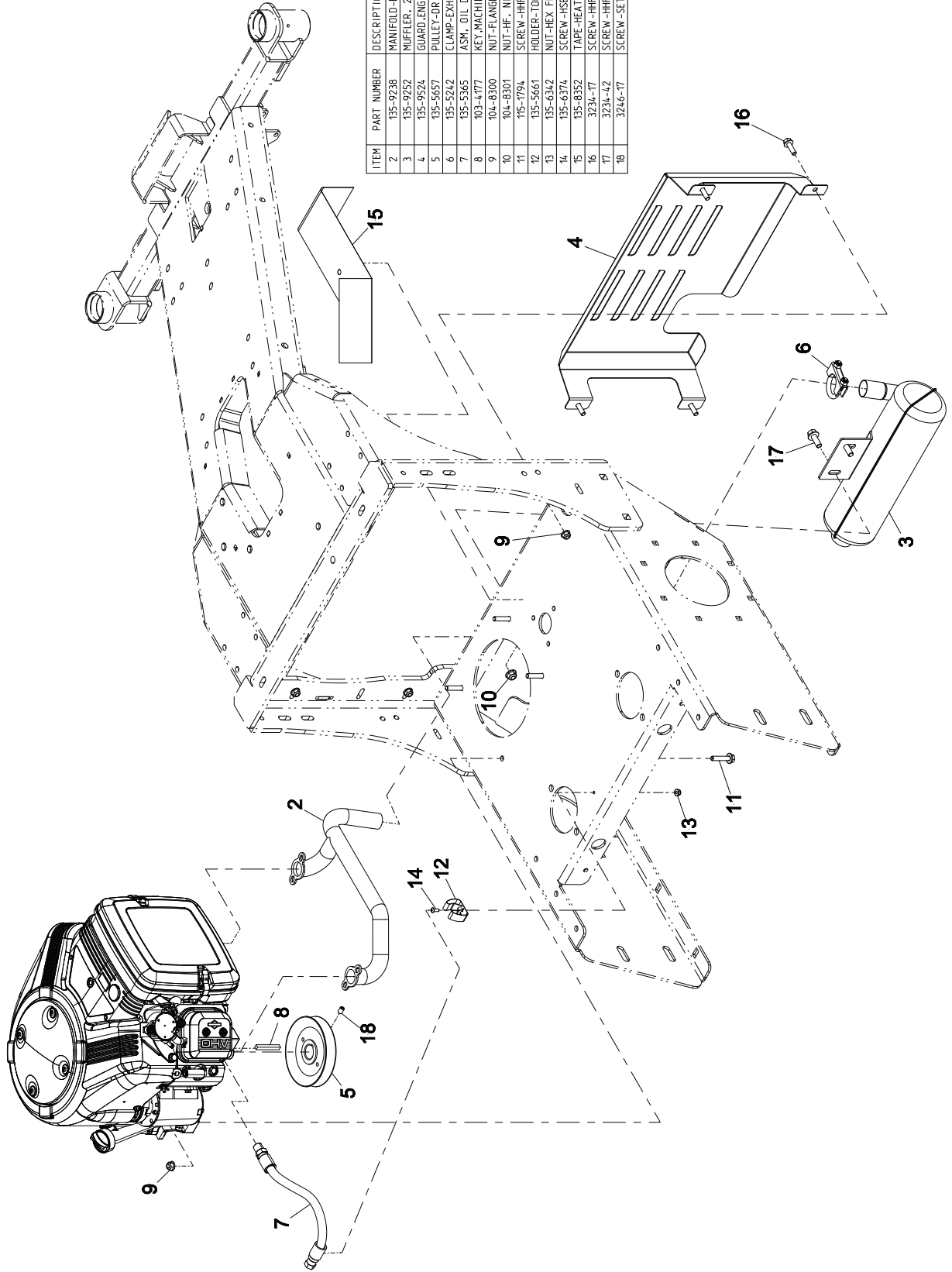
TINE

| | |
|----------------------------|----|
| Z-Plug Tine Assembly | 17 |
|----------------------------|----|

ELECTRICAL

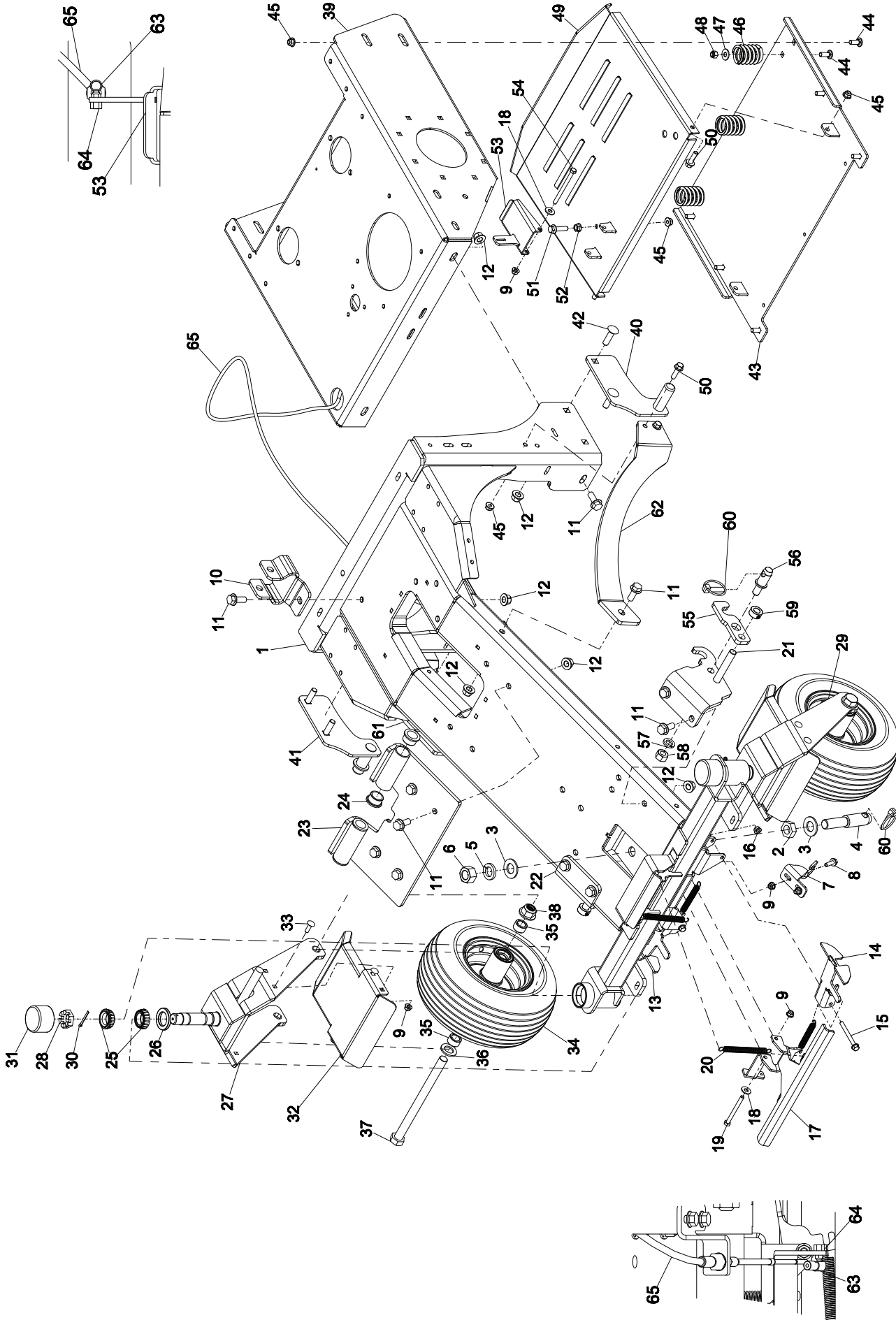
| | |
|----------------------------------|----|
| Z-Plug Electrical Assembly | 19 |
|----------------------------------|----|

Z-Plug Engine Assembly



| ITEM | PART NUMBER | DESCRIPTION | QTY |
|------|-------------|--|-----|
| 2 | 135-9238 | MANIFOLD-EXHAUST (18HP BR166S) | 1 |
| 3 | 135-9252 | MUFFLER-23 HP BR166S | 1 |
| 4 | 135-9524 | GUARD-ENGINE-AE | 1 |
| 5 | 135-5657 | PULLEY-DRIVE | 1 |
| 6 | 135-5242 | CLAMP-EXHAUST | 1 |
| 7 | 135-5365 | ASM. OIL DRAIN HOSE W /PLUG | 1 |
| 8 | 103-4177 | KEY-MACHINE 1/4X1/4X2 | 1 |
| 9 | 104-8300 | NUT-FLANGE, NI (5/16-18 UNC) | 8 |
| 10 | 104-8301 | NUT-HF, NI (3/8-16, NYLOCK, CZ. GR NS) | 2 |
| 11 | 115-1794 | SCREW-HHF (5/16-18X1.50) | 4 |
| 12 | 135-5661 | HOLDER-TOOL, CLIP (BLACK VINYL COATED) | 1 |
| 13 | 135-6342 | NUT-HEX FLANGE (10-24, NYLOC, SS) | 1 |
| 14 | 135-6374 | SCREW-HSBH (#10-24 X 1/2, SS) | 1 |
| 15 | 135-8352 | TAPE-HEAT | 4 |
| 16 | 3234-42 | SCREW-HHF (5/16-18 X 1.00, BR5, Y1B) | 2 |
| 17 | 3234-42 | SCREW-HHF (3/8-16 X 1) | 2 |
| 18 | 3246-17 | SCREW-SET, (5/16-24 X .500) | 1 |

Z-Plug Frame Assembly

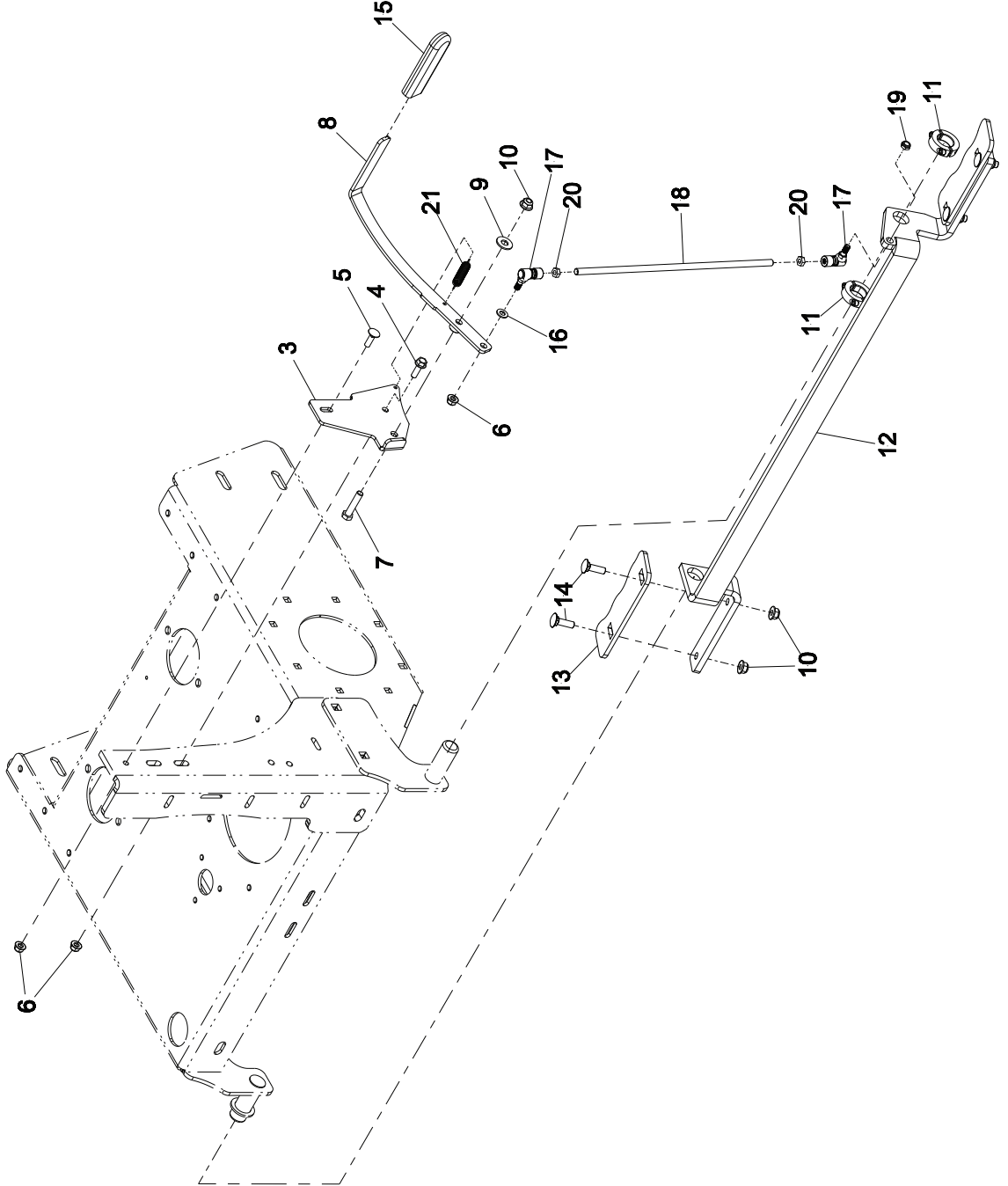


Z-Plug Frame Assembly (continued)

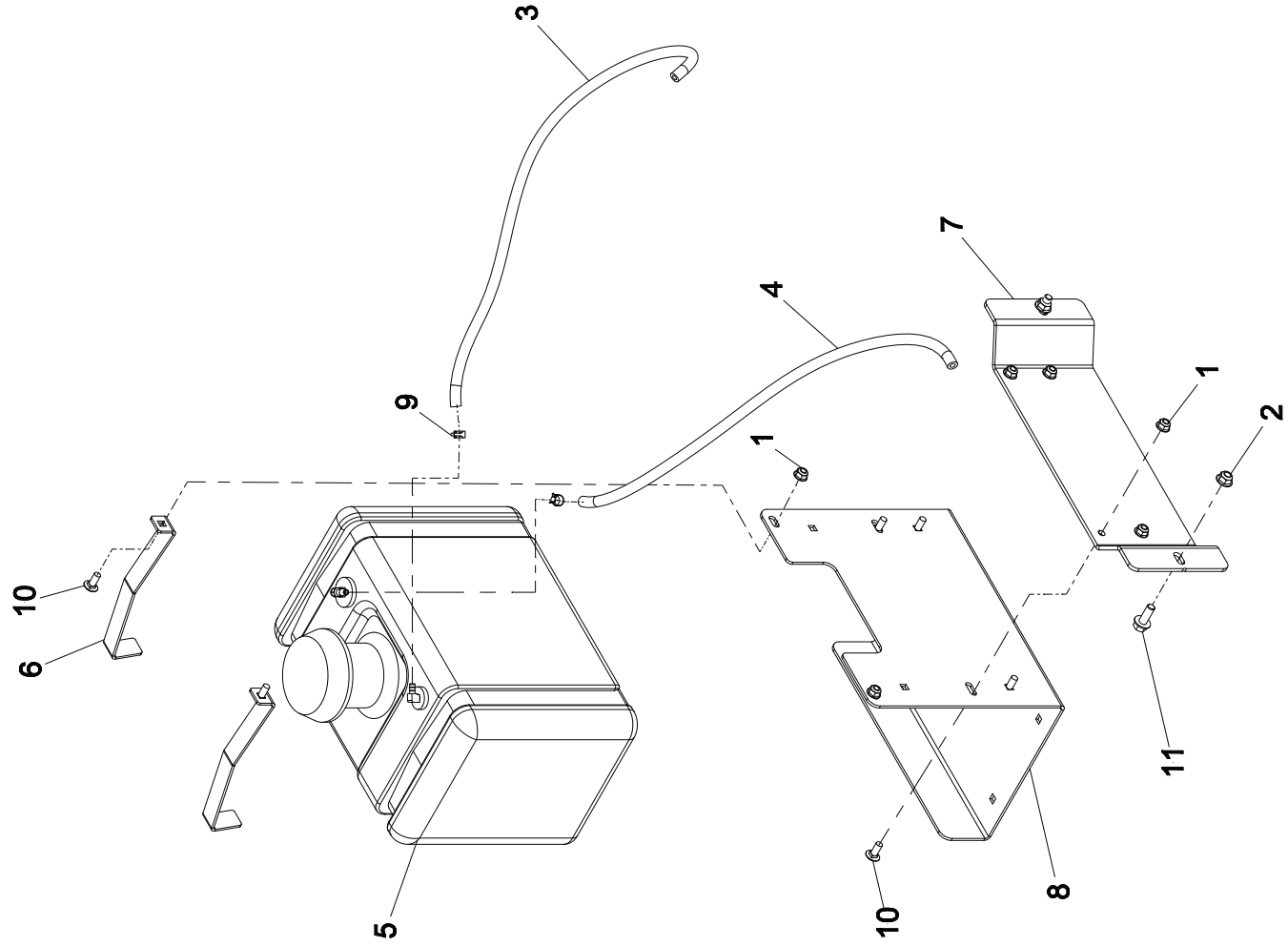
| ITEM | PART NUMBER | DESCRIPTION | QTY |
|------|-------------|---|-----|
| 1 | 135-9501 | FRONT FRAME ASM [WELDED] | 1 |
| 2 | 3220-8 | NUT-JAM [7/8-14 UNF] | 1 |
| 3 | 3256-29 | WASHER-FLAT, .938X1.750 | 2 |
| 4 | 135-9371 | 1-1/8X5-1/4 LIFT ARM PIN | 1 |
| 5 | 3253-28 | WASHER-LOCK/SP [.875] | 1 |
| 6 | 3219-18 | NUT-HEX [7/8-14] | 1 |
| 7 | 135-9659 | BRACKET-CABLE, LCS | 1 |
| 8 | 3234-17 | SCREW-HHF [5/16-18 X 1.00,GR5, YLB | 2 |
| 9 | 104-8300 | NUT-FLANGE, NI [5/16-18 UNC] | 12 |
| 10 | 135-8678 | BRACKET-MOUNT, CYLINDER | 1 |
| 11 | 3234-38 | SCREW-HHF [.500-13X1.25,GR5,YZ] | 14 |
| 12 | 99-5107 | NUT-LOCK, .50-13 | 18 |
| 13 | 135-9479 | WING-CASTER RH [WELDMENT] | 1 |
| 14 | 135-9480 | WING-CASTER LH [WELDMENT] | 1 |
| 15 | 135-6222 | SCREW-HHF [5/16-18 X 3.00, SER FLG, SS] | 2 |
| 16 | 135-6109 | NUT-HEX FLANGE [5/16-18, NYLOC, SS] | 2 |
| 17 | 142-0280 | ARM-BODY, LCS | 1 |
| 18 | 3256-56 | WASHER-FLAT [.375 X .875] | 2 |
| 19 | 322-20 | SCREW-HH [5/16-18 X 3.250] | 1 |
| 20 | 135-5652 | SPRING-EXTENSION | 4 |
| 21 | 135-9471 | PIN-HITCH LH [WELDMENT] | 1 |
| 22 | 135-9472 | WELDMENT-HITCH PIN RH | 1 |
| 23 | 135-9484 | PIVOT-ARM, LIFT [WELDMENT] | 1 |
| 24 | 256-132 | BUSHING-FLANGE | 4 |
| 25 | 254-92 | CONE-BEARING, TAPERED | 4 |
| 26 | 1-543511 | GREASE SEAL 1.25 DIA SHAFT | 2 |
| 27 | 142-0301 | FORK-CASTER, RH [WELDMENT] | 1 |
| 28 | 99-4508 | NUT-CASTLE [1-14 UNS, GR2, F/W 98-8786] | 2 |
| 29 | 142-0300 | WLD-CASTER, ZPLUG LH | 1 |
| 30 | 135-6292 | PIN-COTTER [5/32 X 1.50, SS] | 2 |
| 31 | 135-5756 | CAP-DUST, RUBBER | 2 |
| 32 | 142-0292 | FENDER-CASTER | 2 |
| 33 | 3230-22 | SCREW-CARR. [.313-18X1.00 SHORTNECK] | 8 |
| 34 | 135-8615 | WHEEL AND TIRE [13 X 6.5-6, BLACK] | 2 |
| 35 | 135-5683 | SPACER-AXLE | 4 |
| 36 | 103-0357 | WASHER, FLAT, .891X1.50X.13 | 2 |
| 37 | 135-6300 | SCREW-HH [3/4-10 X 10.0, GR5, CZ] | 2 |
| 38 | 138-4082 | NUT-HEX FLG [3/4-10, NYLOCK, YZ, GR N8] | 2 |
| 39 | 142-0283 | REAR FRAME ASM [WELDED] | 1 |
| 40 | 142-0310 | PIVOT-BRAKE, LH [WELDMENT] | 1 |
| 41 | 142-0311 | PIVOT-BRAKE, RH [WELDMENT] | 1 |
| 42 | 3233-14 | SCREW-CARRIAGE [.50-13 X 1.75] | 4 |
| 43 | 142-0291 | FRAME BASE [WELDMENT] | 1 |
| 44 | 3231-22 | SCREW-CARR [3/8-16 X 1.000, GR5, LB | 9 |
| 45 | 104-8301 | NUT-HF, NI [3/8-16, NYLOCK, CZ, GR N5] | 13 |
| 46 | 135-5654 | SPRING-COMPRESSION | 3 |
| 47 | 100-7403 | WASHER | 3 |
| 48 | 3296-39 | NUT-LOCK, NI (3/8-16) | 3 |
| 49 | 142-0319 | PLATFORM-ZPLUG [WELDMENT] | 1 |
| 50 | 3234-24 | SCREW-HHF [.375-16X1.25,GR5,YZ,WLB | 6 |
| 51 | 114-4681 | SCREW-HHF [3/8-16 X 1.50] | 1 |
| 52 | 32128-55 | NUT-HEX FLANGE (.375-16) | 1 |
| 53 | 135-9709 | PEDAL-FOOT, ZPLUG [WELDMENT] | 1 |
| 54 | 322-19 | SCREW-HH [5/16-18 X 4.000] | 1 |
| 55 | 135-9330 | PLATE-ATTACHMENT, LOCK | 2 |
| 56 | 135-9369 | PIN-ANCHOR [7/8X3-1/8] | 2 |
| 57 | 3253-8 | WASHER-LOCK[SPLIT REG 5/8,STL.YMZ] | 2 |
| 58 | 3217-11 | NUT-HEX [.625-11] | 2 |
| 59 | 142-1443 | 5/8 SHAFT COLLAR | 2 |
| 60 | 135-9372 | LYNCH PIN | 3 |
| 61 | 135-8012 | BRACE-FRAME, RH | 1 |
| 62 | 135-8015 | BRACE-FRAME, LH | 1 |
| 63 | 135-5682 | BALL JOINT-SS [10-32] | 2 |
| 64 | HDW05856 | NUT,NYL INS,#10-32,ST/ST 18-8 | 2 |
| 65 | 135-8632 | CABLE-CASTER, LOCKING | 1 |
| 66 | 302-63 | ZERK | 2 |

Z-Plug Park Brake Assembly

| ITEM | PART NUMBER | DESCRIPTION | QTY |
|------|-------------|---|-----|
| 3 | 195-9568 | PLATE-BRAKE (WELDMENT) | 1 |
| 4 | 3234-17 | SCREW-HHF [5/16-18 X 1.00.GRS. Y1B | 1 |
| 5 | 3230-2 | BOLT-CARR [3/16-18 X 1.00] | 1 |
| 6 | 104-8300 | NUT-FLANGE -NI [5/16-18 UNC] | 3 |
| 7 | 323-53 | SCREW-HHF [3/16-16 X 1.75] | 1 |
| 8 | 142-0322 | WASHER-PLAIN (TYPE A WIDE. 3/8 STL.CZ) | 1 |
| 9 | 137-3078 | NUT-HF -NI [3/8-16. NYLOCK. CZ. GR NS] | 5 |
| 10 | 104-8301 | COLLAR-SPLIT [1.0" ID] | 2 |
| 11 | 195-5620 | ROD - BREAK. AE | 1 |
| 12 | 142-0312 | BRAKE PAD. 10.5 WIDE. TIRE. AE | 2 |
| 13 | 142-0279 | SCREW-CARR[3/8-16 X 1.25.GRS.CZ] | 4 |
| 14 | 119-1662 | GRIP-BRAKE LEVER | 1 |
| 15 | 1-63268 | WASHER-PLAIN (TYP A NAR. 5/16. STL. CZ) | 1 |
| 16 | 220-9683 | ROD END | 2 |
| 17 | 195-8630 | ROD-BRAKE [14-1/2 | 1 |
| 18 | 3296-47 | NUT-LOCK LT. THIN 5/16-18 | 1 |
| 19 | 3218-2 | NUT - JAM [3/16-RUNC] | 2 |
| 20 | 195-5652 | SPRING-EXTENSION | 2 |
| 21 | | | 1 |

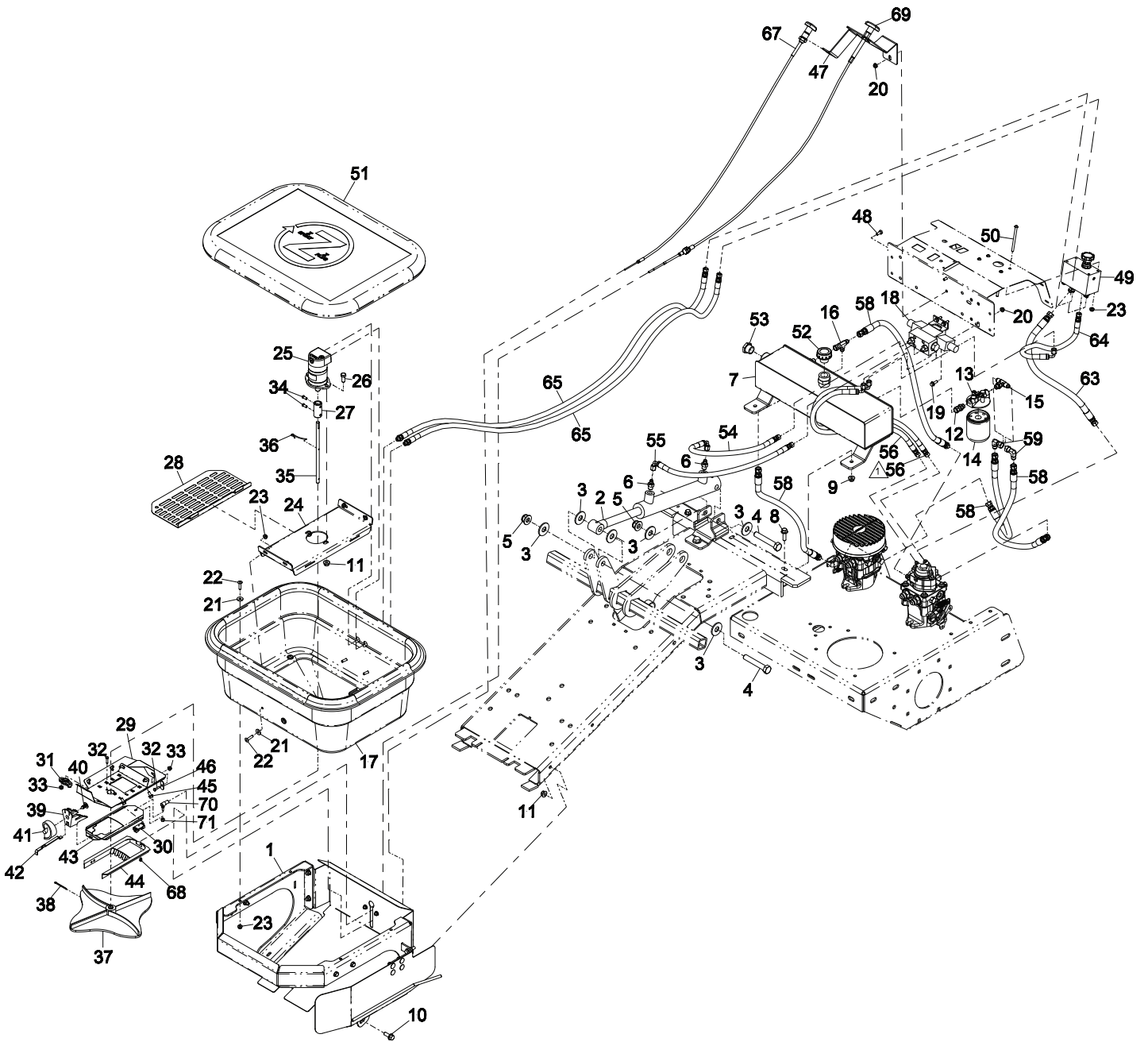


Z-Plug Fuel Assembly



| ITEM | PART NUMBER | DESCRIPTION | QTY |
|------|-------------|--|-----|
| 1 | 104-8300 | NUT-FLANGE, NI [5/16-18 UNC] | 6 |
| 2 | 104-8301 | NUT-HF, NI [3/8-16, NYLOCK, CZ, GR NSF] | 2 |
| 3 | 109-1395 | HOSE, FUEL .25X27.0 J30R7 | 1 |
| 4 | 109-1395 | FUEL, HOSE (.25X27.0, J30R7) | 1 |
| 5 | 135-5758 | TANK-FUEL, 5 GAL | 1 |
| 6 | 135-8787 | STRAP-TANK, AE | 2 |
| 7 | 135-9497 | MOUNT-TANK | 1 |
| 8 | 142-0272 | MOUNT-TANK, BRACKET | 1 |
| 9 | 2472-98 | CLAMP | 2 |
| 10 | 3230-23 | SCREW-CARRL.312-18X.750.GB5.YZ.SHORT-NK] | 6 |
| 11 | 3234-42 | SCREW-HHF (3/8-16 X .1) | 2 |
| 12 | 135-8957 | FUEL TANK CAP | 1 |

Z-Plug Auxiliary Hydraulics Assembly



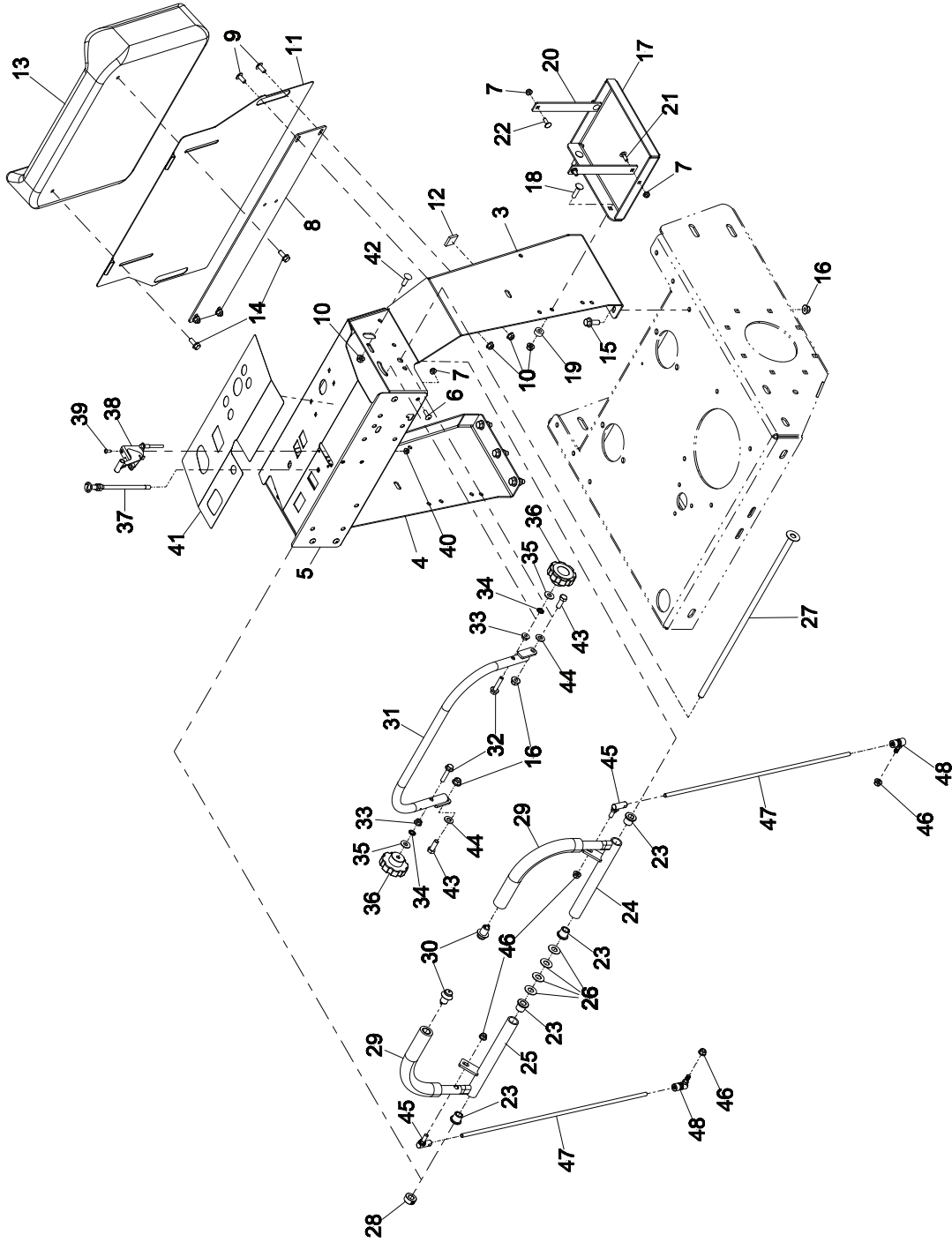
Z-Plug Auxiliary Hydraulics Assembly (continued)

| ITEM | PART NUMBER | DESCRIPTION | QTY |
|------|-------------|---|-----|
| 1 | 135-6974 | HOPPER ASM - ZPLUG | 1 |
| 2 | 135-9157 | LIFT CYLINDER NEW STYLE 8" STROKE | 1 |
| 3 | 3256-7 | WASHER-FLAT, .688X1.750 | 6 |
| 4 | 135-6988 | SCREW-HH [.625-11 X 3.750] | 2 |
| 5 | 133-9681 | NUT-HEX FLG [5/8-11,NYLOCK,YZ,GR N5] | 2 |
| 6 | 01-201-0780 | FITTING, STRAIGHT | 2 |
| 7 | 142-0324 | TANK-HYDRAULIC, ZPLUG [WELDMENT] | 1 |
| 8 | 119-4061 | SCREW-HHF ROHS [3/8-16 X 1.25] | 2 |
| 9 | 104-8301 | NUT-HF, NI [3/8-16, NYLOCK, CZ, GR N5] | 2 |
| 10 | 135-6208 | SCREW-HHF [3/8-16 X 1.0, SER FLG, SS] | 4 |
| 11 | 135-6110 | NUT-HEX FLANGE [3/8-16, NYLOC, SS] | 6 |
| 12 | 135-9095 | 6FJIC SWIVEL-6MORB | 1 |
| 13 | 104-7836 | HEAD-FILTER | 1 |
| 14 | 135-5695 | FILTER-HYDRAULIC | 1 |
| 15 | 135-9210 | FITTING-TEE | 1 |
| 16 | 353-877 | SWIVEL-TEE RUN | 1 |
| 17 | 135-8519 | HOPPER-120LBS | 1 |
| 18 | 135-9149 | Parker Electric Actuated Valve | 1 |
| 19 | 3234-4 | SCREW-HHF [.250-20X.750,GR5,YZ] | 4 |
| 20 | 104-7201 | NUT-FLANGE, NI [1/4-20 UNC] | 6 |
| 21 | 135-6341 | WASHER [1/4 X 3/4 X 1/8, NYL] | 8 |
| 22 | 135-6352 | SCREW-PTH [1/4-20 X 1.0, SS] | 8 |
| 23 | 135-6108 | NUT-HEX FLANGE [1/4-20, NYLOC, SS] | 12 |
| 24 | 142-1987 | PAN-HOPPER, 120 | 1 |
| 25 | 135-5243 | MOTOR-HYDRAULIC, SPREADER | 1 |
| 26 | 126-0520 | SCREW-HH [3/8-16X.875, SS] | 2 |
| 27 | 135-5937 | COUPLING-HOPPER SS | 1 |
| 28 | 142-1995 | SCREEN-HOPPER, 120 | 2 |
| 29 | 142-1990 | PLATE-BASE, HOPPER | 1 |
| 30 | 126-0990 | RATE GATE GUIDE | 4 |
| 31 | 135-5943 | BEARING-FLANGE [EFO1-06R] | 1 |
| 32 | 135-6356 | SCREW-HH [#10-24 X 3/4, SS] | 3 |
| 33 | 135-6342 | NUT-HEX FLANGE [10-24, NYLOC, SS] | 3 |
| 34 | 3241-7 | SCREW-SQH [.250X20X.50] | 2 |
| 35 | 135-8504 | SHAFT-HOPPER, 120 | 1 |
| 36 | 135-5957 | WIRE-AGITATOR [SS-297-0003] | 1 |
| 37 | 135-5954 | SPINNER-SPREADER [SHORT HUB] | 1 |
| 38 | 135-6340 | PIN-COTTER [1/8 X 1.75, SS] | 1 |
| 39 | 126-0985 | DIAL MOUNT | 1 |
| 40 | 126-0986 | PINE TREE CLIP | 1 |
| 41 | 126-0988 | DIAL | 1 |
| 42 | 135-5965 | LINKAGE-GATE, RATE | 1 |
| 43 | 135-5573 | SLIDE-DOOR, HOPPER | 1 |
| 44 | 126-0991 | ACCUWAY DIFFUSER | 1 |
| 45 | 135-6280 | SCREW-HHF [1/4-20 X 1/2, SER FLG, SS] | 8 |
| 46 | 135-5569 | RETAINER, CABLE | 1 |
| 47 | 142-0328 | BRACKET-HOPPER CABLE | 1 |
| 48 | 321-3 | SCREW-HH [1/4-20 X .625] | 2 |
| 49 | 135-5256 | MANIFOLD-HOPPER, W/OUT RELIEF | 1 |
| 50 | 135-6385 | SCREW-HSBH [1/4-20 X 3.50, SS] | 4 |
| 51 | 135-8483 | SMALL HOPPER COVER 120 | 1 |
| 52 | 135-9058 | CAP-HYDRO TANK | 1 |
| 53 | 135-9087 | CAP-FLUID LEVEL | 1 |
| 54 | 142-0032 | HOSE ASM, HYDHP [1/4 X 15.5, 37F, 90 37F] | 1 |
| 55 | 142-0033 | HOSE ASM, HYDHP [1/4 X 15.5, 37F, 90 37F] | 1 |
| 56 | 142-0034 | HOSE ASM, HYDHP [1/4 X 33.5, 37F, 90 37F] | 1 |
| 58 | 142-0020 | HOSE ASM, HYDLP [3/8 X 24, 37F, 37F] | 1 |
| 59 | AU218-980 | ELBOW-90 SW VL 37FL 3/8 TUBE | 2 |
| 63 | 135-9988 | HOSE ASM, HYDLP [3/8 X 21 37F, 37F] | 1 |
| 64 | 135-7016 | HOSE ASM, HYDHP [1/4 X 19, 37F, 90 37F] | 1 |
| 65 | 142-0053 | HOSE ASM, HDYHP [1/4 X 59, 37F, ORBM] | 1 |
| 67 | 135-5931 | CABLE-PUSH/PULL [LOCKING] | 1 |
| 68 | 135-5961 | RETAINER-CABLE, WIRE [W/SCW] | 1 |
| 69 | 135-5935 | CABLE-PUSH/PULL | 1 |
| 70 | 135-5682 | BALL JOINT-SS [10-32] | 1 |
| 71 | HDW05856 | NUT,NYL INS,#10-32,ST/ST 18-8 | 1 |

NOTE(S):

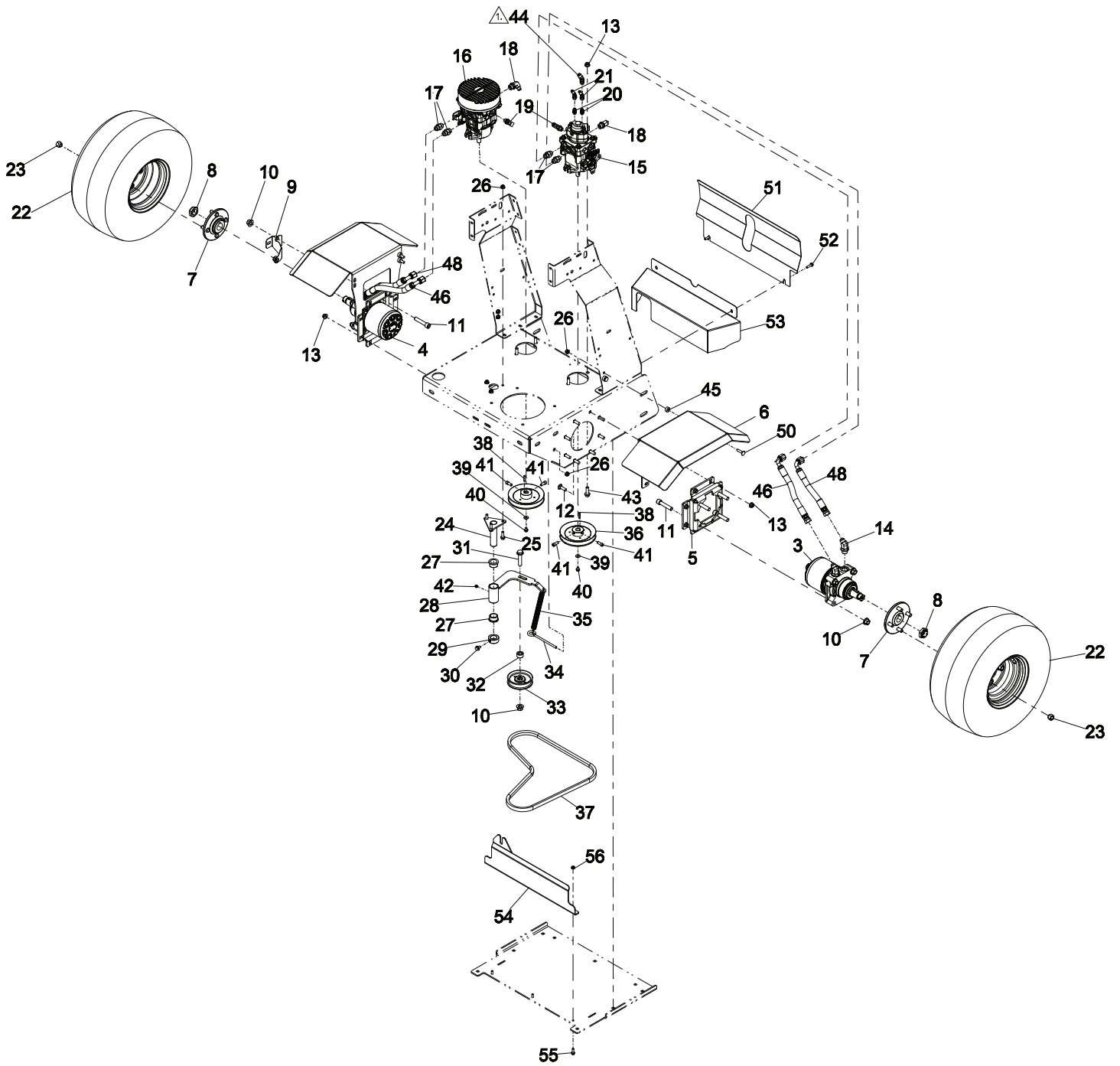
△ ITEM 56 IS USED IF NO HOPPER ATTACHMENT IS USED.

Z-Plug Control Tower Assembly



| ITEM | PART NUMBER | DESCRIPTION | QTY |
|------|-------------|--|-----|
| 3 | 412-0286 | WLD-PANEL, TOWER LH | 1 |
| 4 | 412-0287 | WLD-PANEL, TOWER RH | 1 |
| 5 | 412-0303 | WLD-PANEL, CONTROL | 1 |
| 6 | 1-803076 | SCREW-1/4-20x.75 CRSTRSHD | 8 |
| 7 | 104-7201 | NUT-FLANGE, NI 1/4-20 UNC | 12 |
| 8 | 412-0304 | PLATE, FACE, AE | 1 |
| 9 | 100-5487 | SCREW-PTH 1/2/16-18 X .75, YZ1 | 4 |
| 10 | 104-8300 | NUT-FLANGE, NI 1/2-16-18 UNC | 8 |
| 11 | 135-9649 | PLATE, KNEE PAD, AE | 1 |
| 12 | 93-9155 | VELCRO | 2 |
| 13 | 135-5334 | PAD-KNEE, Z-SPRAY/Z-PLUG | 1 |
| 14 | 326-2712 | SCREW-HHF 1/2/16-18X .75, SS | 2 |
| 15 | 326-412 | SCREW-HHF 3/8-16 X .91 | 6 |
| 16 | 104-8301 | NUT-HF, NI 1/2/16-18, NYLOC, CZ, GR N5 | 6 |
| 17 | 135-9345 | WLD-TRAY, BATTERY | 1 |
| 18 | 3230-3 | SCREW-CARR 1/32-18X1.250, GR5, YZ1 | 2 |
| 19 | 121-1759 | SPACER | 1 |
| 20 | 135-9543 | STRAP, BATTERY, AE | 1 |
| 21 | 3229-1 | SCREW-CARR1.250-20 X .750,GR5,YZ1 | 2 |
| 22 | 1-807512 | BOLT-CARR (SSN 1/4-20X3/4) | 2 |
| 23 | 135-5694 | BUSHING-FLANGE 1.5 ID | 4 |
| 24 | 135-8879 | WLD-HANDLE, LH | 1 |
| 25 | 135-8880 | WLD-HANDLE, ZPLUG RH | 1 |
| 26 | 110-6894 | WASHER-PIVOT | 4 |
| 27 | 135-5430 | ROD-PIVOT, JOY STICK (WELD) | 1 |
| 28 | 135-6192 | COLLAR 1.50, ID | 1 |
| 29 | 1-653257 | GRIP-CONTROL LEVER | 1 |
| 30 | 135-8920 | HARNES, KIT, THUMB SWITCH, ZP | 2 |
| 31 | 135-5427 | BAR-SPEED (WELD) | 1 |
| 32 | 115-1794 | SCREW-HHF 1/2/16-18X1.50 | 2 |
| 33 | 32128-26 | NUT-HEX, FLANGE 1/2/16-18 | 2 |
| 34 | 135-6286 | WASHER-LOCK 1/2/16 EXT TOOTH, SS | 2 |
| 35 | HDW 41535 | FLAT WASHER, 5/16" NOM,ST,1/8-8 | 2 |
| 36 | 135-5669 | KNOB-FLUTED 1/2/16-18 INSERT | 2 |
| 37 | 135-5707 | CHOKE-CABLE | 1 |
| 38 | 135-5200 | CABLE-TROTTLE | 1 |
| 39 | 135-6374 | SCREW-HSBM (#10-24 X 1/2, SS) | 2 |
| 40 | 135-6382 | NUT-HEX FLANGE 1/2-24, NYLOC, SS | 2 |
| 41 | 135-6223 | DECAL-CONTROL PANEL(Z-SPRAT) | 1 |
| 42 | 3230-22 | SCREW-CARR, 1/32-18X1.00 SHORTNECK | 1 |
| 43 | 323-6 | SCREW-HH 1/375-16 X 1.00 | 2 |
| 44 | 3256-24 | WASHER-FLAT (.406 X .080) | 2 |
| 45 | 135-5257 | BALLJOINT-SS 1/2/16-24, LH | 2 |
| 46 | 135-6109 | NUT-HEX FLANGE 1/2/16-18, NYLOC, SS | 4 |
| 47 | 135-8624 | ROD-CONTROL | 2 |
| 48 | 135-5718 | BALL JOINT-QUICK DISCONNECT, SS | 2 |

Z-Plug Ground Drive Assembly



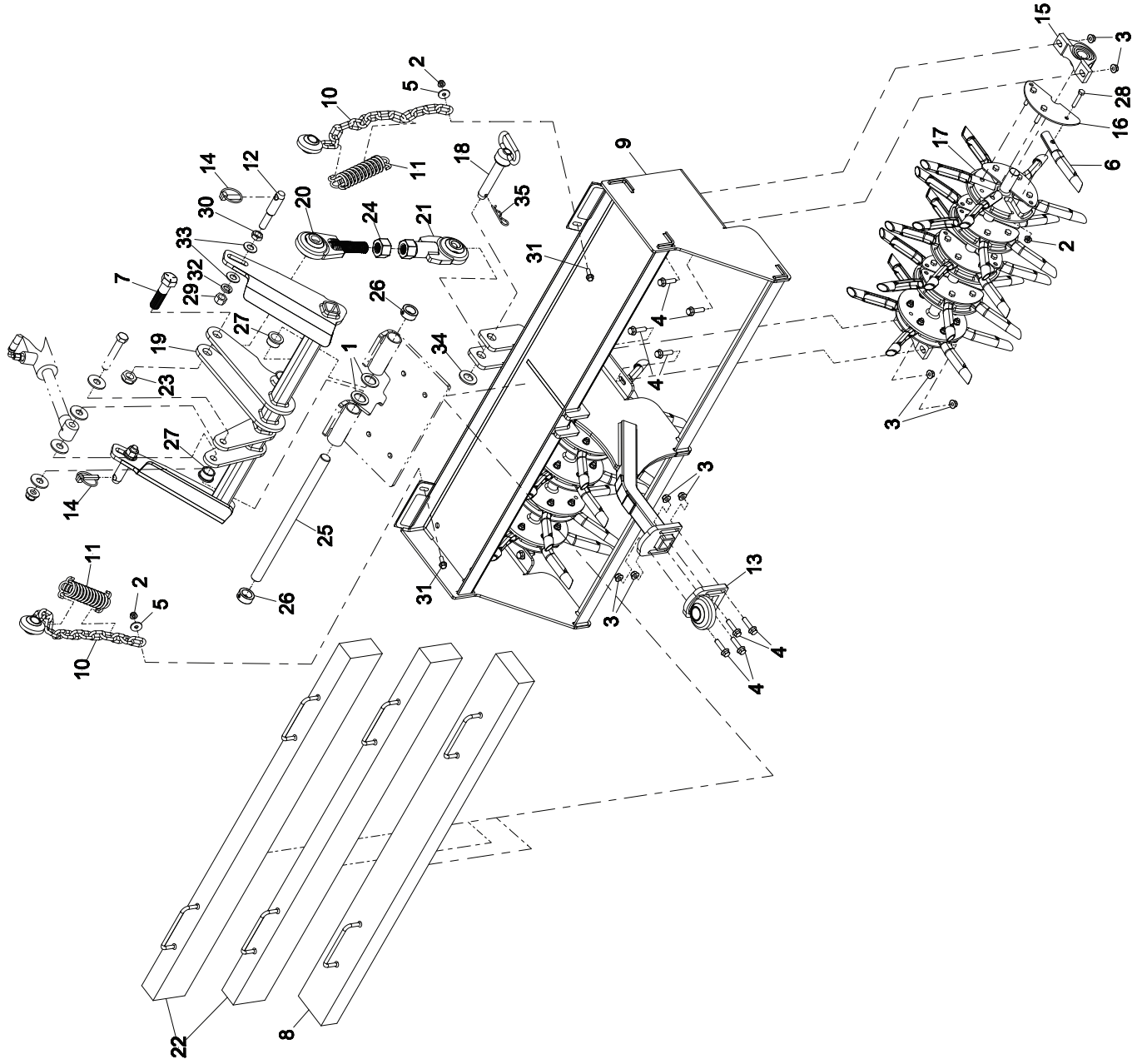
Z-Plug Ground Drive Assembly (continued)

| ITEM | PART NUMBER | DESCRIPTION | QTY |
|------|-------------|---|-----|
| 3 | 135-9040 | LEFT WHEEL MOTOR | 1 |
| 4 | 135-9041 | RIGHT WHEEL MOTOR | 1 |
| 5 | 142-0270 | BRACKET-WHEEL MOTOR [WELDMENT] | 2 |
| 6 | 142-0307 | FENDER-LH AE [WELDMENT] | 2 |
| 7 | 135-5684 | HUB-WHEEL | 2 |
| 8 | 116-1399 | LOCKNUT-WHEEL MOTOR | 2 |
| 9 | 135-5574 | BRACKET-HOPPER, SPEEDOMETER SENSOR | 1 |
| 10 | 99-5107 | NUT-LOCK, .50-13 | 9 |
| 11 | 3274-71 | SCREW-HSH [1/2-13 X 2.50] | 8 |
| 12 | 3231-25 | SCREW-CARR [.375-16 X 1.25] | 16 |
| 13 | 104-8301 | NUT-HF, NI [3/8-16, NYLOCK, CZ, GR N5] | 20 |
| 14 | 135-5696 | FITTING-ELBOW, 45 DEG [ORB-10,37 DEG-8] | 4 |
| 15 | 135-9024 | L-HYD PUMP W/ AUX | 1 |
| 16 | 135-9026 | R-HYD PUMP W/ FAN | 1 |
| 17 | 353-388 | FITTING,STRAIGHT | 4 |
| 18 | 353-537 | FITTING-HYD, 90 | 2 |
| 19 | 103-1802 | FTG-ELBOW 90 [MORB-6,MJIC-6] | 2 |
| 20 | 353-545 | FITTING-STRGHT[ORB-4,37 MALE-4] | 2 |
| 21 | 135-9114 | 4MJIC-4FJIC 90 DEG SWIVEL | 2 |
| 22 | 135-5968 | WHEEL AND TIRE ASM [20X10.5-8, BLACK] | 2 |
| 23 | 242-50 | LUG NUT- TAPERED | 8 |
| 24 | 135-9488 | PIVOT-IDLER [WELDMENT] | 1 |
| 25 | 3234-17 | SCREW-HHF [5/16-18 X 1.00,GR5, YLB | 3 |
| 26 | 104-8300 | NUT-FLANGE, NI [5/16-18 UNC] | 8 |
| 27 | 256-132 | BUSHING-FLANGE | 2 |
| 28 | 135-9523 | ARM-IDLER [WELDMENT] | 1 |
| 29 | 135-5382 | COLLAR [1.0" ID] | 1 |
| 30 | 3234-30 | SCREW-HHF(WHIZ) [5/16-18 X .50] | 1 |
| 31 | 3234-46 | SCREW-HHF [.500-13 X 2.25] | 1 |
| 32 | 116-2959 | SPACER [.562 X 1.00, YZ] | 1 |
| 33 | 135-5662 | PULLEY-IDLER, FLAT | 1 |
| 34 | 142-0419 | BOLT-EYE [5/16-18 X 6 X 5/8 EYE] | 1 |
| 35 | 135-5780 | SPRING-EXTENSION | 1 |
| 36 | 135-9067 | PULLEY-DRIVE, PUMP | 2 |
| 37 | 135-9075 | BELT-V [B X 54] | 1 |
| 38 | 1-807272 | KEY,MACHINE 5mmX5mmX25mm | 2 |
| 39 | 135-6273 | WASHER [M6X18X1.6] | 2 |
| 40 | 81-1280 | SCREW - HHF [M6 X 1.0 X 10] | 2 |
| 41 | 100-2401 | SCREW-HSH (5/16-18 X .75) | 4 |
| 42 | 302-63 | ZERK | 1 |
| 43 | 119-4061 | SCREW-HHF ROHS [3/8-16 X 1.25] | 4 |
| 44 | 135-5680 | FITTING-90 SWIVEL [6500-6-4] | 1 |
| 45 | 121-1759 | SPACER | 4 |
| 46 | 142-0031 | HOSE ASM, HYDHP [1/2 X 12.5, 37F, 90 37F] | 2 |
| 48 | 142-0030 | HOSE ASM, HYDHP [1/2 X 10, 37F, 90 37F] | 2 |
| 50 | 3230-3 | SCREW-CARR [.312-18X1.250, GR5, YZ] | 4 |
| 51 | 142-0326 | GUARD-PUMP | 1 |
| 52 | 120-4654 | SCREW-HFH [.25-20 X 1.00, CZ] | 2 |
| 53 | 142-0320 | TOE KICK, AE | 1 |
| 54 | 142-0289 | SHIELD-HEAT, MUFFLER | 1 |
| 55 | 3234-4 | SCREW-HHF [.250-20X.750,GR5,YZ] | 3 |
| 56 | 104-7201 | NUT-FLANGE, NI [1/4-20 UNC] | 3 |

NOTE(S):

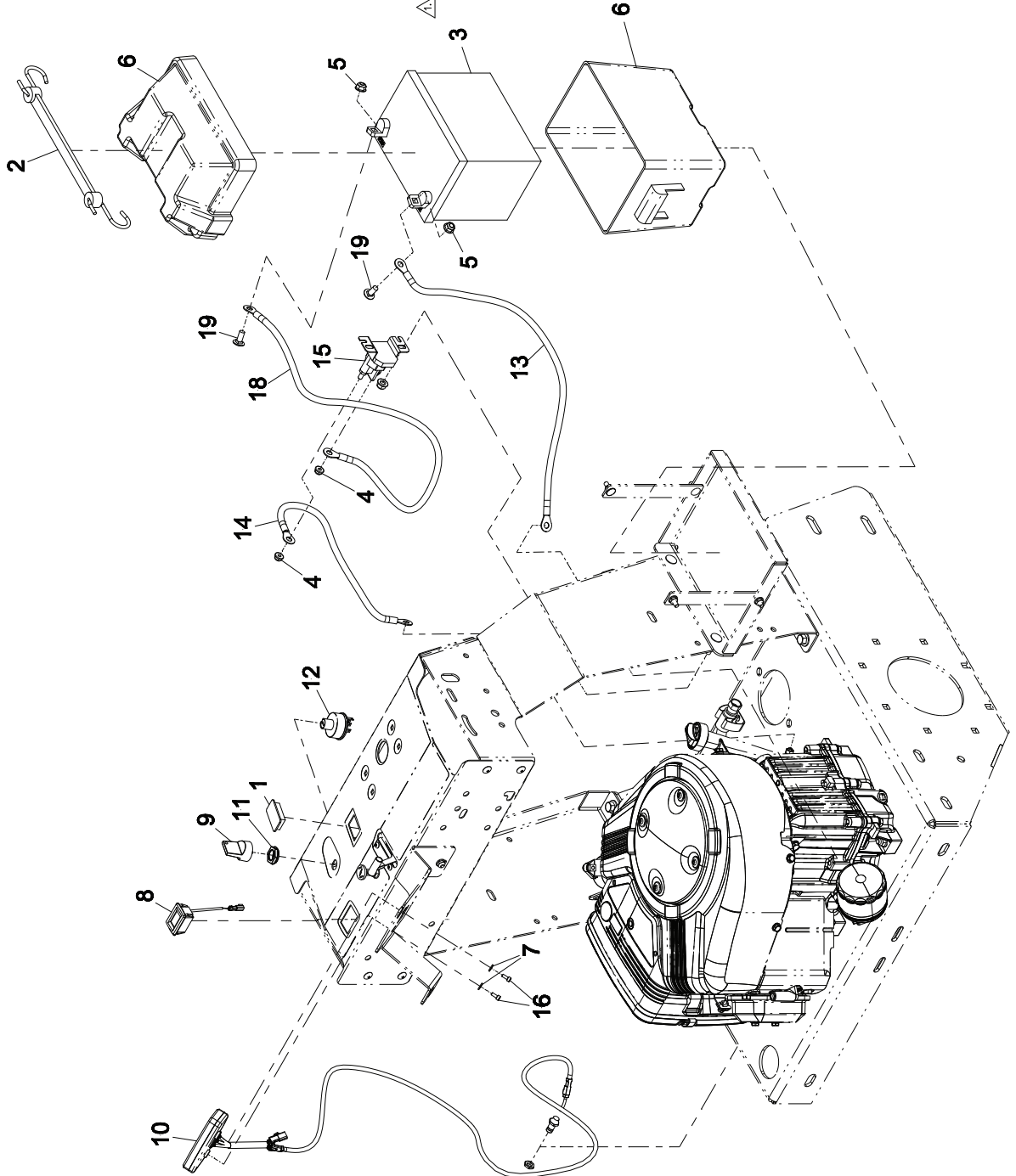
1.  Fitting used when there is a hopper.

Z-Plug Tine Assembly



| ITEM | PART NUMBER | DESCRIPTION | QTY |
|------|-------------|--|-----|
| 1 | 3-6781 | WASHER-THRUST | 2 |
| 2 | 104-8300 | NUT-FLANGE, NI 15/16-18 UNC | 62 |
| 3 | 104-8301 | NUT-HF, NI 13/8-16, NYLOCK, CZ, GR N5J | 12 |
| 4 | 114-4681 | SCREW-HHF 13/8-16 X 1.50J | 12 |
| 5 | 115-7109 | WASHER-FLAT 1.062 X .328J | 2 |
| 6 | 126-2143 | TINE-CORING, 3/4 | 60 |
| 7 | 142-0611 | SCREW-HH 17/8-9 X 3.25J | 1 |
| 8 | 135-6953 | WLD-WEIGHT, HORIZ, ZPLUG | 1 |
| 9 | 135-8785 | WLD-AGRATION HEAD | 1 |
| 10 | 135-9363 | SWIVEL-CHAIN [WELDMENT] | 2 |
| 11 | 135-9373 | Z-PLUG DRAWBAR SPRING | 2 |
| 12 | 135-9368 | 7/8 X 4-1/2 LIFT PINAN212J | 2 |
| 13 | 135-9370 | MOUNT-AERATOR HEAD [WELDMENT] | 1 |
| 14 | 135-9372 | LYNCH PIN | 2 |
| 15 | 135-9379 | BEARING, PILLOW BLOCK 11.00J | 4 |
| 16 | 135-9385 | DISK, HALF, AE | 20 |
| 17 | 135-9387 | REEL-TINE [WELDMENT] | 2 |
| 18 | 135-9421 | 7/8 X 4 HITCH PIN RED HANDLE | 1 |
| 19 | 135-9509 | ARM-LIFT [WELDMENT] | 1 |
| 20 | 135-9518 | LINK-THREADED, MALE [WELDMENT] | 1 |
| 21 | 135-9548 | LINK-THREADED, FEMALE [WELDMENT] | 1 |
| 22 | 135-9604 | WLD-WEIGHT, VERT | 2 |
| 23 | 138-7087 | NUT-LOCK, NI 17/8-9 UNC, THIN | 1 |
| 24 | 142-0240 | NUT-ACME 1-5 THREAD | 1 |
| 25 | 142-0261 | PIVOT ROD, LIFT ARM, AE | 1 |
| 26 | 142-1447 | 1" SHAFT COLLAR | 2 |
| 27 | 256-132 | BUSHING-FLANGE | 2 |
| 28 | 322-9 | SCREW-HH 15/16-18 X 1.750J | 60 |
| 29 | 3219-6 | NUT-HEX 15/8-18, GR2, YZJ | 2 |
| 30 | 3220-6 | NUT-JAM 1.625-18J | 2 |
| 31 | 3234-17 | SCREW-HHF 15/16-18 X 1.00,GR5, Y1B | 2 |
| 32 | 3253-8 | WASHER-LOCKKISPLIT REG 5/8,STL,YMZJ | 2 |
| 33 | 3256-27 | WASHER-FLAT, .656X1.313 | 4 |
| 34 | 3256-29 | WASHER-FLAT, .938X1.750 | 1 |
| 35 | 3290-355 | PIN-HAIR COTTER | 1 |

Z-Plug Electrical Assembly



| ITEM | PART NUMBER | DESCRIPTION | QTY |
|------|-------------|---|-----|
| 1 | 99-7120 | PLUG-HOLE | 1 |
| 2 | 104-2466 | STRAP 1/4 IN. | 1 |
| 3 | 104-2466 | BATTERY (340 C.C.A., WET) | 1 |
| 4 | 104-4657 | NOT-FLANGE - NI (1/4-20 UNC) | 2 |
| 5 | 104-7201 | NOT-FLANGE - NI (1/4-20 UNC) | 2 |
| 6 | 104-8300 | BATTERY BOX ASH (PT PNO3188) | 1 |
| 7 | 116-6673 | WASHER-FLAT (27/8 X.437 X.051, SS) | 2 |
| 8 | 126-9759 | METER-TACH/HOUR | 1 |
| 9 | 135-5259 | KEY-UMBRELLA | 1 |
| 10 | 135-5708 | SPEEDOMETER-TRAIL TECH., STRIKER | 1 |
| 11 | 135-5709 | NUT-SWITCH, KEY | 1 |
| 12 | 135-5715 | SWITCH-IGNITION | 1 |
| 13 | 135-6052 | 19" BLACK BATTERY CABLE | 1 |
| 14 | 135-6119 | 11" RED BATTERY CABLE .250 EYE | 1 |
| 15 | 135-6189 | SOLENOID-STARTER | 1 |
| 16 | 135-6357 | SCREW-HSHW4-6.7 X 10, A2-70,SS | 2 |
| 17 | 135-8923 | WIRING HARNESS - ASM | 1 |
| 18 | 142-0841 | CABLE-BATTERY | 1 |
| 19 | 3230-23 | SCREW-CARRL312-18X.750.GRS-VZ.SHORT-INK | 2 |

NOTES:

⚠️ TRACTOR WIRING HARNESS P/N 135-8923 IS NOT SHOWN.

ELECTRICAL SCHEMATIC - Z-PLUG



(765) 482-0045

920 Hendricks Dr • Lebanon, In 46052