

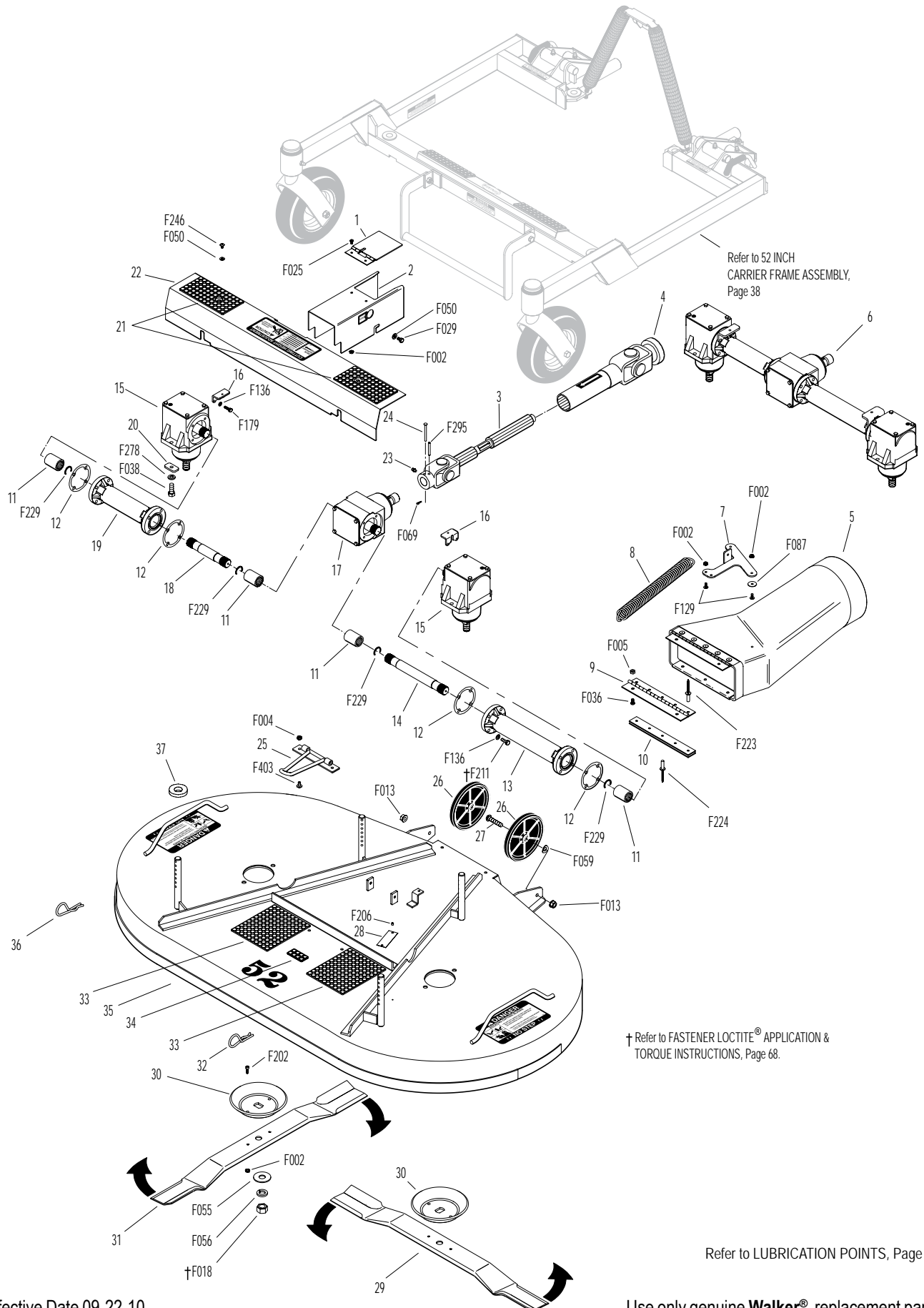
DGHS52 DECK ASSEMBLY (P/N 8810-1)

ITEM NO.	PART NO.	DESCRIPTION	NO. REQ'D	ITEM NO.	PART NO.	DESCRIPTION	NO. REQ'D	
Gearbox and Drive Components				31	7705-6	Blade 27" (RH Rotation)	1	
1	8618-1	Cover, PTO Shaft Guard	1		7705-9	52 GHS Blade Set W/Hub (Includes Items # 29-31, F002 & F202)	*	
2	8619-3	PTO Shaft Guard, 52GHS	1	32	7775-1	Hitch Pin, LH (Silver) #6	2	
	8618-4	PTO Shaft Guard Assy/52 (Includes Items # 1, 2, F002 & F025)	*	33	8735-10	Rubber Mat (5 x 6)	2	
3	7285-15	U-Joint Shaft Assy, 90 Degree, Spline (Includes Items # 24, F069 & F295)	1	34	8788-1	Rubber Mat (1 x 2)	1	
4	7275-16	U-Joint Tube Assy, Spline	1	35	8810-2	52 GHS Deck Housing (Includes Items # 33 & 34)	1	
5	5794	Discharge Chute W/O Spring Mount (6-1/2 Dia.) (Includes Items # 5, 9, 10, F223 & F224)	1	36	7775-2	Hitch Pin, RH (Gold) #6	2	
	5794-1	Discharge Chute W/Spring Mount (Includes Items # 5, 7, 9, 10, F223 & F224)	*	37	5727-1	Washer Shim (5/8 ID)	4	
6	5704-56	52 GHS Gearbox and Tube Assy (Includes Items # 11-19, F136, F179, F211 & F229)	1	Fasteners				
7	8678	Spring Mount, Chute	1		F002	10-24 Keps Nut	9	
8	8677	Extension Spring (1 x 6-1/16)	1		F004	1/4-20 Keps Nut	2	
9	5726	Chute Hinge (2 x 8)	1		F005	1/4-20 ESNA Nut	2	
10	8494-9	Reinforcing Plate	2		F013	3/8-16 Whiz Locknut	2	
11	6054	Spline Coupling	4		F018	5/8-18 Hex Nut	2	
12	P007	Gasket, Cap (Peerless #788030)	4		F025	10-24 x 3/8 PPHMS	2	
13	5068-3	Connector Tube (10-5/16)	1		F029	1/4-20 x 1/2 Hex Bolt	2	
14	6732-10	Connecting Shaft (8-1/32)	1		F036	1/4-20 x 1/2 SBH Screw	2	
15	5052-5	Gearbox, HD (LH Rotation)	2		F038	3/8-16 x 1 Hex Bolt	4	
16	5704-1	Gearbox Cover Support	2		F050	1/4 SAE Washer	4	
17	7751-8	Tee Gearbox/Shear (1.2:1)	1		F055	5/8 SAE Washer	2	
18	6732-4	Connecting Shaft (5-5/16)	1		F056	5/8 Split Lock Washer	2	
19	5065	Connector Tube (7-11/16)	1		F059	3/8 Wave Spring Washer	2	
20	5052-3	1.375 x .750 x .187 Washer	4		F069	3/32 x 1/2 Cotter Pin	1	
21	5747-12	Rubber Mat (3 x 6)	2		F087	#10 x 7/8 Fender Washer	2	
22	6786-2	52 GHS Gearbox Cover (Includes Item # 21)	1		F129	10-24 x 1/2 PTHMS	3	
23	5830	Grease Fitting	1		F136	AN960C416L Washer	16	
24	8067-13	Shear Pin w/Cotter (Set of 5) (Includes Item # F069)	*		F179	1/4-20 x 1 Hex Bolt	4	
Deck Housing Components						F202	10-24 x 5/8 SHC Screw, GR5 SS	4
25	8670-9	Tilt-Up Hook	1		F206	#2 x 3/16 Drive Pin	2	
26	5162-11	Roller Wheel (5" Poly) (Includes Item # F059)	2		F211	1/4-20 x 7/8 Hex Bolt	12	
27	8490	Roller Wheel Axle Bolt	2		F223	3/16 x 5/16 Semi-Tube Rivet	*	
28	NS	Deck Serial Number Plate	1		F224	3/16 x 7/16 Semi-Tube Rivet	*	
29	7705-7	Blade 27" (LH Rotation)	1		F229	C-Clip (13/16)	4	
30	5706	Blade Hub & Trash Guard	2		F246	1/4-20 x 1/2 PTHMS	2	
					F278	3/8 Split Lock Washer	4	
					F295	3/16 x 1-1/2 Split Spring Pin	1	
					F403	1/4-20 x 1/2 PTHMS, SS	2	
				*	Service Part Only			

Use only genuine **Walker**® replacement parts.

Effective Date 09-22-10

DGHS52 DECK ASSEMBLY (P/N 8810-1)



Effective Date 09-22-10

Use only genuine **Walker®** replacement parts.