

WALKER

Illustrated Parts Manual

B18



Beginning S/N: 125166
Effective Date: 10-23-13
P/N 4000-10

KEY TO ABBREVIATIONS USED IN THIS MANUAL

<i>Abbreviation</i>	<i>What it Represents</i>
° (Dimension)	Degrees (Angle)
" (Dimension)	inches
(-)	Negative (Polarity)
(+)	Positive (Polarity)
AT	All-Terrain
CCW	Counter-clockwise
Conn	Connector
CW	Clockwise
D	Diameter
DC	Deck, Collection (number refers to size in inches)
DM	Deck, Mulching (number refers to size in inches)
DR	Deck, Rear Discharge (number refers to size in inches)
DS	Deck, Side Discharge (number refers to size in inches)
DU	Garlock (Bearing)
ESNA (Fastener)	Nylon Insert Locknut
FSC	Forward Speed Control
GA	Gauge
gal	gallon
GHS	Grass Handling System
GR (Fastener)	Grade
HD	Heavy Duty
HP	Horse Power
ID	Identification or Inside Diameter
L	Length
LH	Left Hand (orientated with operator on seat)
LP	Low Profile
mm (Dimension)	millimeters
MS (Fastener)	Machine Screw
NS (as part number)	Item is not sold by Walker Manufacturing
OD	Outside Diameter
oz	ounce
PFH (Fastener)	Phillips Flat Head
P/N	Part Number
PPH (Fastener)	Phillips Pan Head
PTH (Fastener)	Phillips Truss Head
PTO	Power Take-Off
QKS	Quick Slide
qt	quart
RH	Right Hand (orientated with operator on seat)
SAE (Fastener)	Society of Automotive Engineers
SBH (Fastener)	Socket Button Head (Bolt)
SD	Side Discharge
SFH (Fastener)	Slotted Flat Head
SHC (Fastener)	Socket Head Cap
SHL (Fastener)	Shoulder (Bolt)
SM (Fastener)	Sheet Metal (Screw)
S/N	Serial Number
Spg	Spring
SQH (Fastener)	Square Head
SS (Fastener)	Stainless Steel
ST (Fastener)	Self-Tapping (Screw)
Term	Terminal
V	Volts

NOTE: In some instances, combinations of abbreviations may be used (e.g. PPHMS - Phillips Pan Head Machine Screw).

Beginning S/N 125166

Effective Date 10-23-13

Use only genuine **Walker**[®] replacement parts.

ILLUSTRATED PARTS LIST

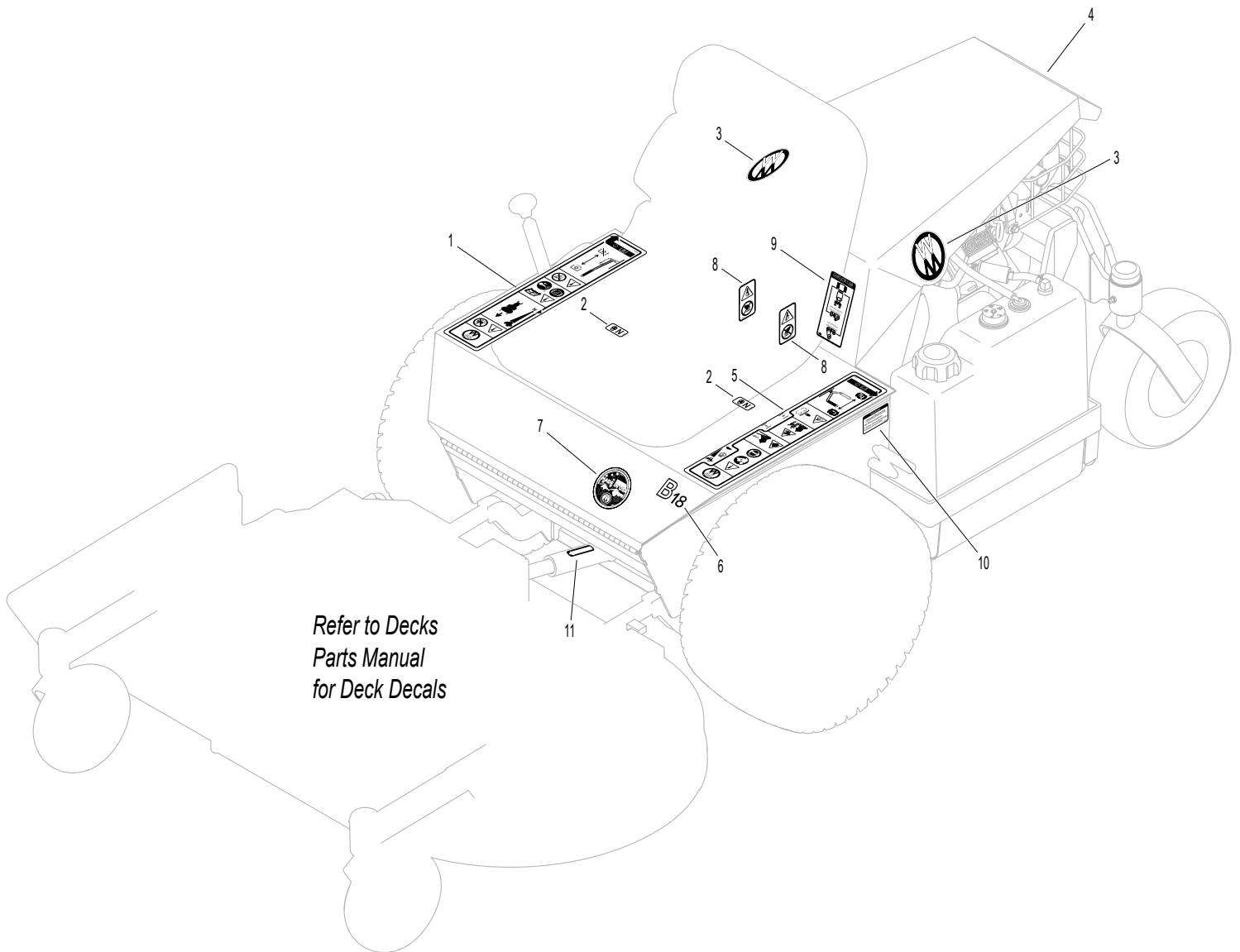
<i>Section of Tractor Covered</i>	<i>Page</i>	<i>Section of Tractor Covered</i>	<i>Page</i>
Decals		Electrical Components	
Tractor Decals	2	Electrical Assembly	14
Body / Chassis Assemblies		Maintenance	
Body / Chassis Assembly	4	Lubrication Points	16
Tractor Components		Wiring Schematic	18
Main Component Power Transmission	6	Maintenance And Service Record Sheet	19
Engine Group	8	Operator's Notes	20
Hydrostatic Ground Drive Assemblies	10	Warranty	
Steering Control Assemblies	12	Limited Warranty	21

TRACTOR DECALS

ITEM NO.	PART NO.	DESCRIPTION	LOCATION	NO. REQ'D
Walker Product and Operation Decals				
1	8600-26	RH Fender	Body, RH Side Near Seat	1
2	9804-1	Axle Lockout	Chassis	2
3	5800-13	Decal, Round (3-3/4")	Rear Body (one on each side)	2
4	5800-7	Decal, Walker (8")	Rear Body	1
5	8600-27	LH Fender	Body, LH Side Near Seat	1
6	8821-2	Decal, B18	Body	1
7	5856-1	Made In USA	Body	1
Danger Decals Warning Decals Caution Decals				
8	8600-2	Danger, Rotating Components	Flex Coupling Guard (one on each side)	2
9	4107-11	Decal, Belt Routing	Rear Body, Underside	1
Maintenance Decals				
10	5082-5	Fuel Recommendations	Chassis, LH Side	1
11	6875	PTO Alignment Arrow	Universal Joint Tube Assembly	1

NOTE: All parts requiring decals are shipped with decals applied.

TRACTOR DECALS



BODY / CHASSIS ASSEMBLY

ITEM NO.	PART NO.	DESCRIPTION	NO. REQ'D	ITEM NO.	PART NO.	DESCRIPTION	NO. REQ'D
Seat Assembly				45	8768-2	Seal, Reverse Lip	2
1	5103	Seat	1	46	8766	Axle Nut (3/4-16)	2
2	2505	Leaf Spring	1	Deck Support Arm & Hitch Assemblies			
3	7223-4	Compression Spring	2	47	4301-10	Deck Arm Support Mount	1
4	7845-1	Rubber Bumper (1.375 x .750)	2	48	6840-1	Support Arm Bushing (2-1/16)	2
5	5841	Retainer Washer (3/8 x 1-1/4)	2	49	4431-1	Deck Support Arm/LH (Includes Item # 35)	1
6	7434	Washer (3/8 x 1-1/4 x 1/4)	2	50	5775-2	Hitch Pin (#6)	2
7	5841-1	Retainer Washer	2	51	4430-1	Deck Support Arm/RH (Includes Item # 35)	1
8	7440-5	Shock Mount (1-1/4 x 3/4)	2	Tilt-Up Latch Assembly**			
Body Assembly				52	5847	Plastic Tip	1
9	4105-5	Rear Body (Includes Item # 10)	1	53	5744-20	Spring Arm, Tilt-Up Latch	1
10	4190-2	Insulation Foam Pad	1	54	5744-10	Spring Pivot Bushing	1
11	5989-4	Dome Plug (3/8)	2	55	5744-15	Compression Spring (3/8 x 5/8)	1
12	5989-3	Dome Plug (5/16)	2	56	5744-13	Mount Angle, LH	1
13	4100-2	Front Body (Includes Items # 14, 26, F004, F029 & F477)	1	57	5744-12	Hook, Tilt-Up Latch	1
14	4102-1	Body Guide / Upper	1	58	5744-14	Mount Angle, RH	1
15	5845	Rubber Bumper (1.50 x 1.25)	2	Fasteners			
16	5146	10mm Ball Stud	2	F002	10-24 Keps Nut		9
17	4145-2	Gas Spring Assembly (Includes Item # 16)	1	F004	1/4-20 Keps Nut		15
18	5180	Edge Molding, Lever Opening	2	F005	1/4-20 ESNA Nut		1
19	4504-3	Hinge (19")	1	F009	5/16-18 Whiz Locknut		16
20	5989-5	Dome Plug (7/16)	1	F013	3/8-16 Whiz Locknut		2
21	7834-3	Wire Saddle (3 Wires)	3	F020	5/16-18 ESNA Nut		1
Chassis Assembly				F025	10-24 x 3/8 PPHMS		7
22	4010-8	Precleaner / Battery Mount	1	F028	10-24 x 3/4 PPHMS		1
23	4320-1	Gas Tank Mount	1	F029	1/4-20 x 1/2 Hex Bolt		4
24	4215-9	Shock Mount / Body Lift Arm	1	F034	5/16-18 x 3/4 Hex Bolt		9
25	4300-15	Chassis Frame	1	F038	3/8-16 x 1 Hex Bolt		1
26	4102-2	Body Guide / Lower	1	F051	3/8 SAE Washer		1
27	7222	Extension Spring (1/4 x 3)	1	F093	5/16-18 x 1 Hex Bolt		2
28	7854	Plastic Tip, Red	1	F116	1/4-20 x 1-1/4 Hex Bolt		1
29	7383-1	Body Latch Hook	1	F183	.312 x .700 x .074 Washer		2
Spread Tail Wheel Assembly				F200	7/16-20 x 3 Grade 8 Bolt		2
30	4401-4	Washer (1-3/4 x 3/8 x 1/4 Thk)	1	F219	7/16-14 x 1-1/4 Hex Bolt		4
31	4301-2	Fiberglide Thrust Washer	2	F227	3/8 x 1-1/4 x 1/8 Washer		2
32	4301-3	Fiberglide Bearing	2	F246	1/4-20 x 1/2 PTHMS		8
33	5830-3	Grease Fitting (45 Deg.)	1	F256	7/16 SAE Washer		4
34	4301-1	Tail Wheel Pivot (Includes Items # 32, 33 & 35)	1	F257	3/8 x 1-11/16 Shoulder Bolt		2
35	5830	Grease Fitting	4	F278	3/8 Split Lock Washer		1
36	8769-8	Dust Cap, Deck Caster	2	F341	Coil Roll Pin (7/64 x 9/16)		1
37	8769-6	Bearing Cone (1" ID)	4	F342	5/16 Conical Washer		2
38	8769-5	Bearing Cup (2 x 1-5/8)	4	F344	3/4-16 Slotted Hex Nut		2
39	8769-7	Seal	2	F347	3/4 SAE Washer		2
40	8765-11	Caster Wheel Fork	2	F348	1/8 x 1-1/2 Cotter Pin		2
41	8767	Axle, Caster Wheel (5-1/8)	2	F381	1/4-20 Hex Nut		1
42	8037-1	Seal, Outer (1-3/4 x 1-1/8)	2	F388	3/8-16 x 2-1/2 Hex Bolt		2
43	8037	Bearing Cone (3/4 ID)	4	F430	7/16-20 ESNA Nut		2
44	8768	Caster Wheel, Pneumatic (11 x 4.00-5)	2	F475	1/4-20 x 1 PFH Screw		1
	8768-3	Tire, Pneumatic (11 x 4.00-5)	*	F477	1/4-20 x 5/8 Carriage Bolt		2
	8768-5	Caster Wheel (5 x 3)	*	* Service Part Only			
				** Complete Tilt-Up Latch Assembly Kit available by ordering kit # 5747.			

Beginning S/N 125166

Effective Date 10-23-13

Use only genuine **Walker**® replacement parts.

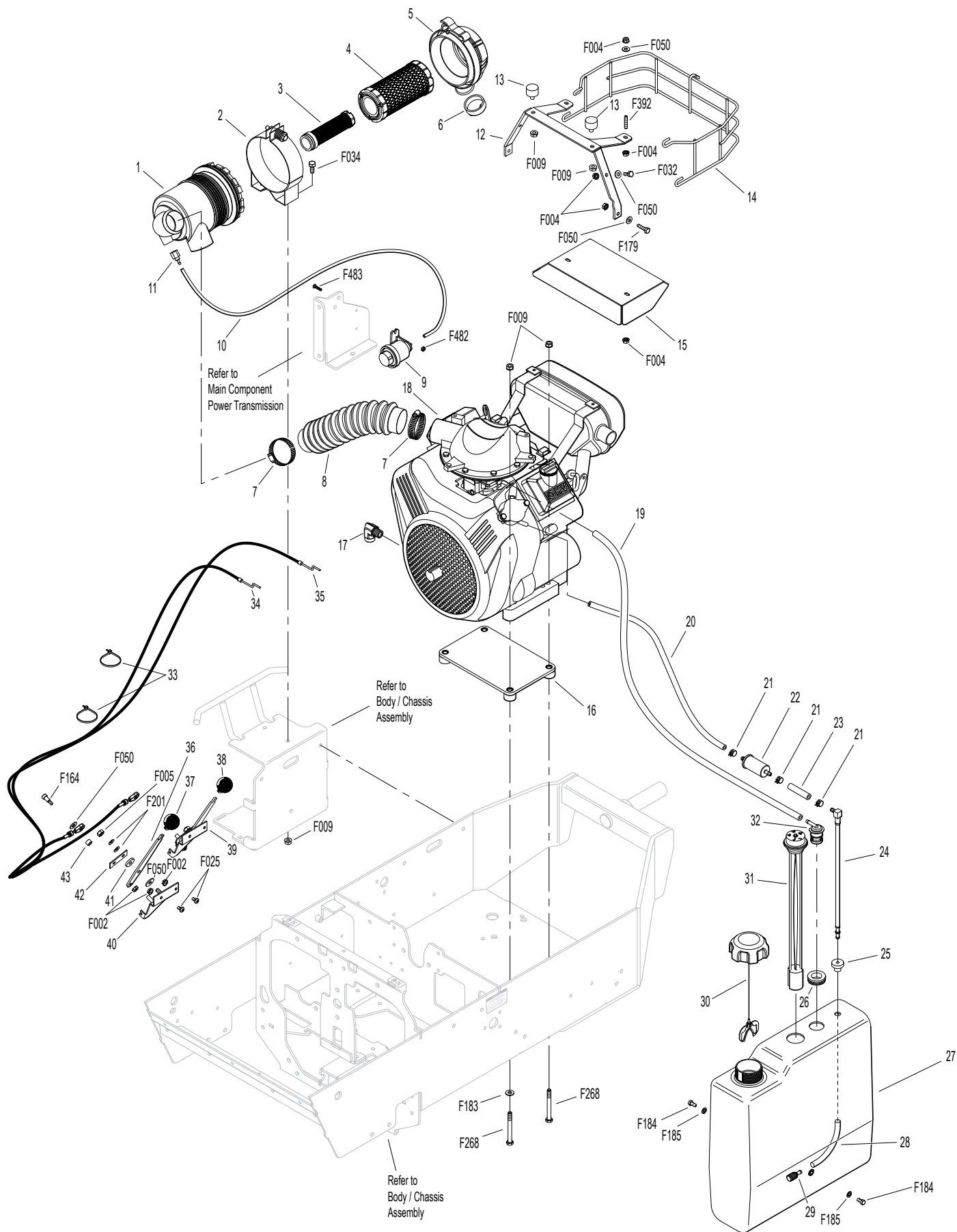
MAIN COMPONENT POWER TRANSMISSION

ITEM NO.	PART NO.	DESCRIPTION	NO. REQ'D	ITEM NO.	PART NO.	DESCRIPTION	NO. REQ'D
PTO Drive Assembly				Fasteners			
1	4850	Handle Grip	1	F004	1/4-20 Keps Nut		8
2	2358-12	Fiberglide Bushing	1	F005	1/4-20 ESNA Nut		2
3	7201-2	Fiberglide Bearing (1/2")	1	F008	5/16-24 Keps Nut		1
4	4358-13	Clutch Lever (Includes Items # 1 & 5)	1	F009	5/16-18 Whiz Locknut		18
5	5830	Grease Fitting	4	F010	5/16-24 ESNA Nut		1
6	5103-2	Pivot Bushing (5/16 ID)	2	F012	3/8-16 Keps Nut		3
7	2358-6	5/16-18 x 1-3/4 Stud	2	F013	3/8-16 Whiz Locknut		1
8	2358-8	Adjustor Brace	1	F014	3/8-16 ESNA Nut		1
9	4358-12	Clutch Pivot Plate	1	F024	5/16-24 Jam Nut		1
10	5214-13	Ball Joint (3/8)	2	F029	1/4-20 x 1/2 Hex Bolt		1
11	7775-6	Wire Lock Pin (2-1/2")	3	F031	1/4-20 x 5/8 Hex Bolt		12
12	4302	Right Hand Shoe	1	F034	5/16-18 x 3/4 Hex Bolt		8
13	4302-5	Upper Shoe, LH	1	F035	5/16-18 x 1-1/4 Hex Bolt		4
14	4302-1	Left Hand Shoe	1	F040	3/8-16 x 1-1/2 Hex Bolt		1
15	2302-6	Shoe Mount, LH	1	F041	3/8-16 x 1-3/4 Hex Bolt		2
16	4302-2	Shoe Mount	2	F051	3/8 SAE Washer		6
17	4325-12	Idler Mount	1	F058	1/4 Wave Spring Washer		6
18	4236-3	PTO Drive Pulley (5/AA)	1	F060	AN960516 Washer		2
19	4302-6	PTO Shoe	1	F061	1/4 Star Lock Washer		1
20	7775-7	Wire Lock Pin (3")	1	F069	3/32 x 1/2 Cotter Pin		2
21	5275-15	U-Joint Tube / 9.5" OAL / Spline (Includes Item # F076)	1	F076	3/8-16 x 5/8 SQH Set Screw		1
22	4274-10	PTO Drive Shaft Assembly	1	F093	5/16-18 x 1 Hex Bolt		2
23	4358-7	Clutch / Pivot Stop	1	F120	AN960416 Washer		8
24	7201-3	Fiberglide Bearing	2	F149	1/4 x 1/4 x 1-1/2 Key		1
25	7201-8	Inner Race (4")	1	F153	3/16 x 3/16 x 1-1/4 Key		1
26	4359	Clutch Engagement (Includes Item # 5)	1	F171	5/16-18 x 3/8 Set Screw		2
27	7523-3	Clevis Pin W/Hole (1/4 x 1/2)	1	F178	1/4 x 1 Fender Washer		1
28	4359-2	Brake Band Link / Rear	1	F183	.312 x .700 x .074 Washer		2
29	4304	Brake Band	1	F209	.765 ID x 1.312 OD x .032 Washer		1
30	4359-1	Brake Band Link / Front	1	F211	1/4-20 x 7/8 Hex Bolt		2
31	7523-2	Clevis Pin W/Hole (1/4 x 5/8)	1	F290	3/8-16 x 5 Hex Bolt		1
32	4411-2	Drive Shaft	1	F298	3/8-24 Jam Nut		2
33	4245-1	Idler Pulley (4/Flat)	2	F325	1/4-20 x 3 Hex Bolt		1
34	4230-1	Engine/PTO Belt/Matched Set	1	F350	1/4-20 LP Nylock		6
35	4236-4	Idler Pulley (4/AA)	1	F381	1/4-20 Hex Nut		1
36	5214-2	Ball Joint (5/16-24) (Nylon Lined)	1	F435	1/4 x 1/4 x 1-1/4 Key		1
37	5226-1	Spring (3/4 x 2-1/2)	1	F449	Washer 1/2 x 1-5/8 x 1/4		1
38	7380	Knuckle Joint	1	F451	1/2-20 Nylon Locknut		1
39	4303-7	Clutch Actuator Bolt (5/16)	1	F484	Washer .380 ID x 1.0 OD x .120		3
40	7377	Plastic Washer (1 x .438 x .025)	2				
41	7378	Pivot Bearing (7/16 x 9/16)	1				
42	4325-1	Clutch Arm	1				
43	5221	Extension Spring (3/4 x 4)	1				
44	2358-11	Clutch Actuator	1				

ENGINE GROUP

ITEM NO.	PART NO.	DESCRIPTION	NO. REQ'D	ITEM NO.	PART NO.	DESCRIPTION	NO. REQ'D
Precleaner Assembly				Choke and Throttle Assemblies			
1	2090-21	Air Cleaner Assembly (Includes Items # 2-6 & 9)	1	33	5975-3	Cable Tie (50# x 7")	2
2	2088-1	Air Cleaner Band	1	34	4109-5	Control Cable (71")	1
3	2090-3	Safety Filter Insert	1	35	4109-3	Control Cable (66")	1
4	2090-1	Air Cleaner Cartridge	1	36	5108-1	Control Lever, Throttle/Choke	2
5	2088-2	Air Cleaner Cap	1	37	5108-5	Throttle Control Knob, Red	1
6	2090-2	Vacuator Valve	1	38	5108-6	Choke Control Knob, Black	1
7	7840	Hose Clamp (1-1/4 to 1-3/4)	2	39	7108	Control Assembly (Includes Items # 36, 40-42 & F201)	2
8	2012	Flex Hose (1-3/4 x 2)	1		4108-4	Throttle Control and Cable Assembly (Includes Item # 37)	*
9	5091-6	Air Flow Indicator W/Bracket	1		4109-4	Choke Control and Cable Assembly (Includes Item # 38)	*
10	M258	Vacuum Hose (13")	1**	40	5108-8	Control Bracket	2
11	5091-5	1/8 Pipe Thread Female W/Barb	1	41	5108-10	Friction Washer (.125)	2
Engine Assembly				42	5108-7	Control Lock Tab	2
12	4104-1	Body Support	1	43	5172	Bearing, Delrin (.255 ID x .379 OD x .250)	1
13	4845	Rubber Bumper (1.0 x .625)	2	Fasteners			
14	4013-1	Muffler Guard	1		F002	10-24 Keps Nut	6
15	4104-9	Heat Shield, Aluminum	1		F004	1/4-20 Keps Nut	10
16	4300-14	Engine Spacer Plate	1		F005	1/4-20 ESNA Nut	2
17	4010-5	3/8 NPT Street L	1		F009	5/16-18 Whiz Locknut	8
18	NS	18 HP Engine (Briggs & Stratton 356447338G1)	1		F025	10-24 x 3/8 PPHMS	4
Fuel Tank Assembly					F032	1/4-20 x 3/4 Hex Bolt	2
19	M113	Fuel Line (3/16 x 3-1/4")	1**		F034	5/16-18 x 3/4 Hex Bolt	2
20	M246	Fuel Line (1/4 x 3-1/2")	1**		F050	1/4 SAE Washer	10
21	5879-3	Hose Clamp (1/2)	3		F164	10-24 x 1/4 x 3/8 SHL Bolt	2
22	5020	Fuel Filter	1		F179	1/4-20 x 1 Hex Bolt	2
23	M246	Fuel Line (1/4 x 1-3/4")	1**		F183	.312 x .700 x .074 Washer	2
24	5083-8	Tank Tube (13")	1		F184	1/4-20 x 1/2 Hex Bolt, SS	2
25	5083-1	Bushing, Rubber (Fits 5083)	1		F185	1/4 Internal Star Lock Washer, SS	2
26	5977-7	Roll Over Grommet (.900 x 1-1/2)	1		F201	1/4 Belleville Spring Washer	4
27	6055-2	Fuel Tank, 4.0 Gal. Gas (Black) (Includes Items # 24, 26, 28, 29, 31 & 32)	1		F268	5/16-18 x 3 Hex Bolt	4
28	5086-7	Hose (1/4 x 6)	1		F392	1/4-20 x 1 Set Screw/SS Cup Point	2
29	5020-2	Fuel Filter, In Tank	1		F482	8-32 Nylock Nut	2
30	5082-4	2-1/4 Ratchet Fuel Cap	1		F483	8-32 x 3/4 PPHMS	2
31	8055-2	Fuel Tank Gauge	1	* Service Part Only			
32	8043-8	Roll Over Valve	1	** Required hose specifications: M113 - 3/16" ID fuel/oil/vapor hose (Gates 4219-0093 or equivalent) M246 - 1/4" ID low permeation (<15g/m ² /day) fuel hose (Parker 38904 or equivalent) M258 - 7/64" ID automotive vacuum hose			

ENGINE GROUP



Beginning S/N 125166
 Effective Date 10-23-13
 Use only genuine **Walker**® replacement parts.

HYDROSTATIC GROUND DRIVE ASSEMBLIES

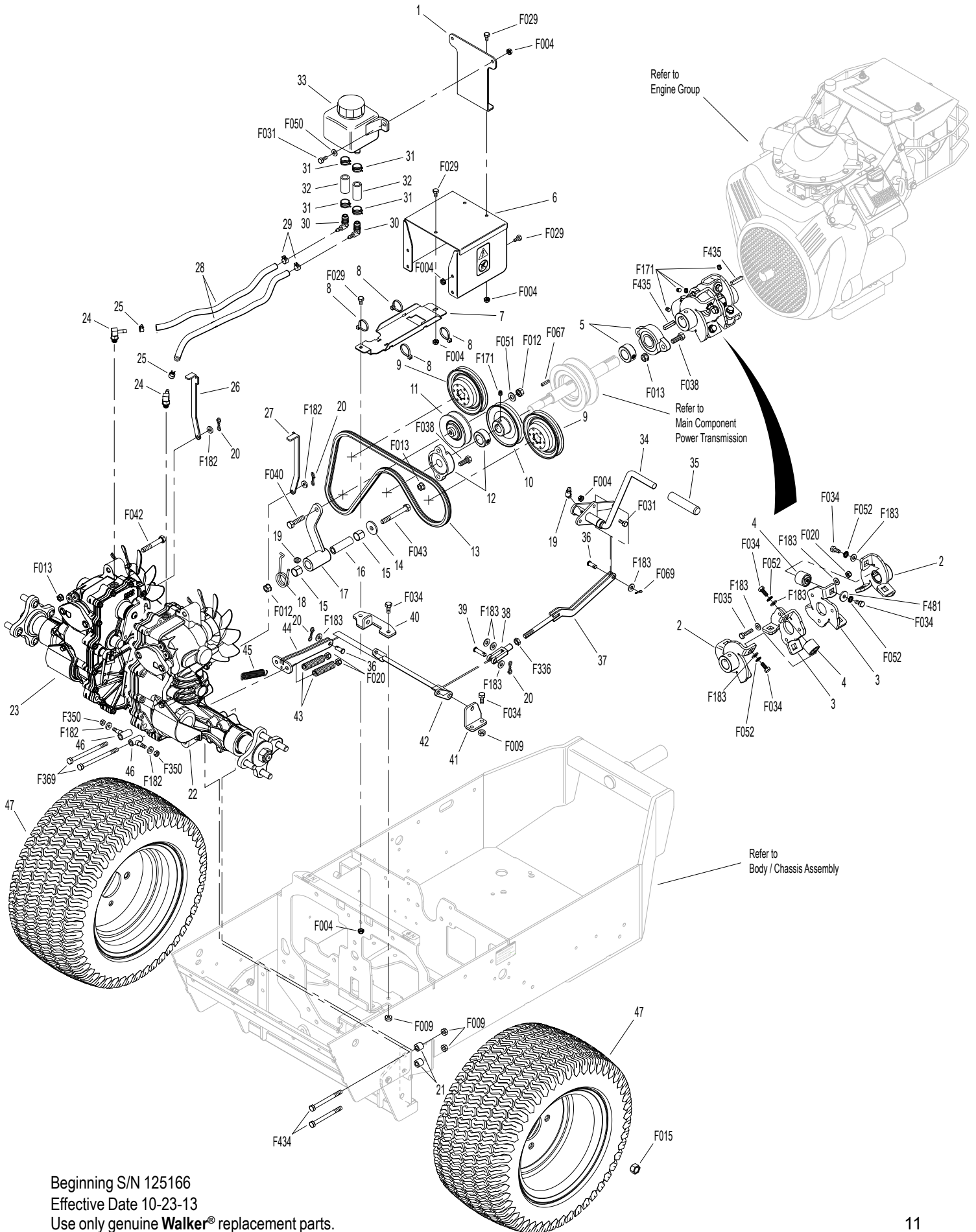
ITEM NO.	PART NO.	DESCRIPTION	NO. REQ'D	ITEM NO.	PART NO.	DESCRIPTION	NO. REQ'D
Ground Drive Assemblies				43	5665-1	Compression Spring (2-1/2)	2
1	4025-6	Bottle Mount	1	44	4407	Parking Brake Link	1
2	2351-3	Flex Coupler Half (Includes Items # F171 & F435)	2	45	5222	Extension Spring (1/2 x 3-1/4)	1
3	4351-3	Inner Flex Coupler Half (1/4)	2	46	5463	Steering Lever Actuator	2
4	2351-1	Rubber Iso Coupler	6	Wheel Assembly			
5	4349-9	Flanged Bearing (1")	1	47	5075-1	LP Wheel & Tire Assembly (18 x 8.50-10)	2
6	4010-10	Flex Coupling Guard	1		5075-2	LP Tire (18 x 8.50-10)	*
7	4025-10	Hose Channel	1		5075-5	LP Wheel (10 x 7)	*
8	5975-3	Cable Tie (50# x 7")	4		5033-6	Wheel & Tire (18 x 7.00-8)	**
9	4026-9	Pulley (52364)	2		5030-6	Standard Tire (18 x 7.00-8)	*
10	4240-1	Drive Pulley (Includes Items # F067 & F171)	1		5031-2	Standard Wheel (8 x 5.00-5)	*
11	4245	Idler Pulley (3/A)	1		5030-4	Tire Tube (18 x 8.50-8)	*
12	4349-10	Flanged Bearing (3/4")	1	Fasteners			
13	4230-2	Ground Drive Belt	1	F004	1/4-20 Keps Nut		13
14	5841	Retainer Washer (3/8 x 1-1/4)	1	F009	5/16-18 Whiz Locknut		8
15	7201-3	Fiberglide Bearing	2	F012	3/8-16 Keps Nut		2
16	7201-5	Inner Race (2-1/4)	1	F013	3/8-16 Whiz Locknut		6
17	4325-13	Idler Arm (Includes Items # 15 & 19)	1	F015	1/2-20 Wheel Lug Nut		8
18	7364-2	Torsion Spring	1	F020	5/16-18 ESNA Nut		5
19	5830-3	Grease Fitting (45 Deg.)	2	F029	1/4-20 x 1/2 Hex Bolt		8
20	4407-4	Bow Tie Cotter Pin	4	F031	1/4-20 x 5/8 Hex Bolt		5
21	9430-1	Spacer Tube	4	F034	5/16-18 x 3/4 Hex Bolt		16
22	4025-11	Hydro-Gear ZT3100, LH	1	F035	5/16-18 x 1-1/4 Hex Bolt		3
23	4026-11	Hydro-Gear ZT3100, RH	1	F038	3/8-16 x 1 Hex Bolt		4
24	2025-17	Straight Thread Hose Fitting	2	F040	3/8-16 x 1-1/2 Hex Bolt		1
25	5879-4	Hose Clamp (7/16)	2	F042	3/8-16 x 2-1/4 Hex Bolt		2
26	2028-6	Lockout Arm, RH	1	F043	3/8-16 x 3 Hex Bolt		1
27	2028-5	Lockout Arm, LH	1	F050	1/4 SAE Washer		2
28	8015	Hose (1/4 x 14-1/2)	2	F051	3/8 SAE Washer		1
29	5879-3	Hose Clamp (1/2)	2	F052	5/16 Ext. Star Lock Washer		12
30	4025-3	Elbow (1/4 x 1/2)	2	F067	3/16 x 3/16 x 1 Key		1
31	5879-8	Hose Clamp (13/16)	4	F069	3/32 x 1/2 Cotter Pin		1
32	5087-1	Hose (1/2 x 1-3/4)	2	F171	5/16-18 x 3/8 Set Screw		5
33	2025-1	Oil Expansion Reservoir (71327)	1	F182	1/4 x 5/8 x 1/8 Washer		4
Parking Brake Assembly				F183	.312 x .700 x .074 Washer		20
34	4406	Parking Brake Lever (Includes Items # 19 & 35)	1	F336	3/8-16 Jam Nut		1
35	7406-1	Handle Grip, Red	1	F350	1/4-20 LP Nylock		2
36	8655-4	Clevis Pin (5/16 x 3/4)	2	F369	5/16-18 x 4-1/2 Hex Bolt		2
37	4406-12	Brake Actuator Pull	1	F434	5/16-18 x 3-1/2 Hex Bolt		4
38	2280	Clevis (3/8)	1	F435	1/4 x 1/4 x 1-1/4 Key		2
39	2406-4	Clevis Pin (5/16 x 1-1/8)	1	F481	Washer 5/16 x 7/8 x .125		12
40	4401-6	Parking Brake Mount	1	* Service Part Only			
41	4401-7	Parking Brake Pivot	1	** May be ordered as a factory-installed option or for dealer installation. Narrow Drive Tires are used when installing a 36" Deck. Contact your Walker dealer.			
42	4407-3	Parking Brake Actuator	1				

Beginning S/N 125166

Effective Date 10-23-13

Use only genuine **Walker**® replacement parts.

HYDROSTATIC GROUND DRIVE ASSEMBLIES



Beginning S/N 125166
 Effective Date 10-23-13
 Use only genuine Walker® replacement parts.

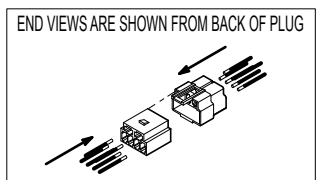
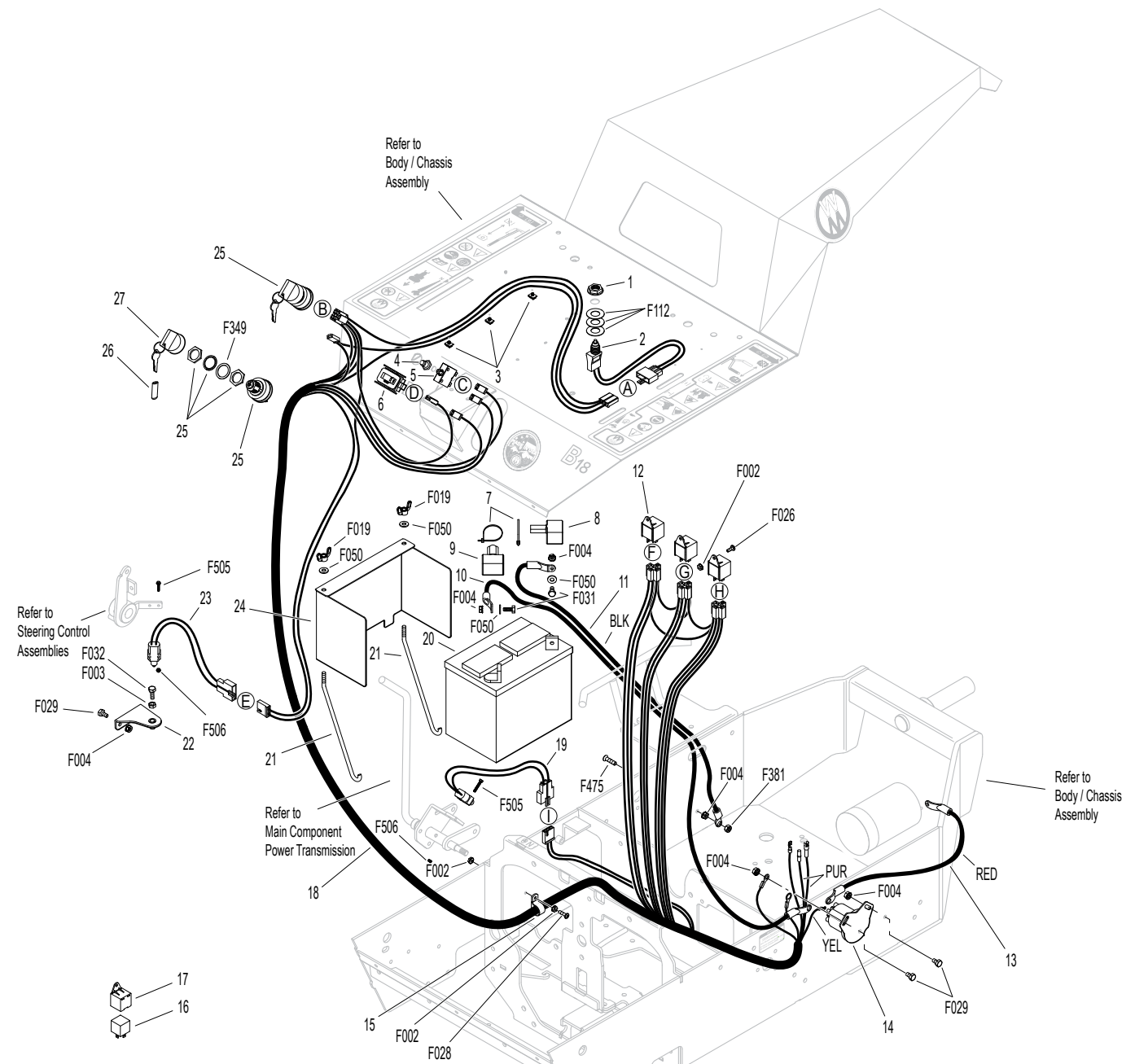
STEERING CONTROL ASSEMBLIES

ITEM NO.	PART NO.	DESCRIPTION	NO. REQ'D	ITEM NO.	PART NO.	DESCRIPTION	NO. REQ'D
Steering Lever & FSC Assemblies				Fasteners			
1	5862	FSC Knob	1	F004		1/4-20 Keps Nut	2
2	4170	FSC Lever Assembly (Includes Item # 4)	*	F005		1/4-20 ESNA Nut	2
3	2170-1	Step Washer	1	F008		5/16-24 Keps Nut	2
4	5830	Grease Fitting	1	F009		5/16-18 Whiz Locknut	6
5	5214-5	Ball Joint (5/16-24/LH) W/O Stud	1	F010		5/16-24 ESNA Nut	2
6	4173	Control Rod (5-3/8)	1	F024		5/16-24 Jam Nut	3
7	5214-4	Ball Joint (5/16-24) W/O Stud	1	F029		1/4-20 x 1/2 Hex Bolt	2
8	4219	Extension Spring (3/4 x 6-1/2)	1	F035		5/16-18 x 1-1/4 Hex Bolt	1
9	4451-9	FSC Friction Actuator	1	F044		5/16-24 x 3/4 Hex Bolt	2
10	2463	Actuator Washer	2	F059		3/8 Wave Spring Washer	1
11	7201-2	Fiberglide Bearing (1/2")	2	F093		5/16-18 x 1 Hex Bolt	2
12	4199-2	Steering Lever Dampener Assembly	2	F146		1/4-20 Jam Nut	2
13	5146	10mm Ball Stud	4	F167		5/16-18 Hex Nut	1
14	5830-5	Grease Fitting (45 Degree) M6 x 1	1	F183		.312 x .700 x .074 Washer	6
15	5665-1	Compression Spring (2-1/2)	2	F188		1/4-20 Self-Locking Nut	4
16	4213-2	Control Rod (6-1/2)	2	F192		3/8-24 Self-Locking Nut	1
17	5214-2	Ball Joint (5/16-24) (Nylon Lined)	2	F198		.250 x .625 x .040 Washer, SS	2
18	2212-3	Seal Retainer	2	F211		1/4-20 x 7/8 Hex Bolt	1
19	2212	Transmission Control Arm Stop	2	F312		3/8 x 3/8 Shoulder Bolt	1
20	2212-2	Transmission Control Arm, RH	1	F345		1/4-20 x .770 Knurled Bolt	4
21	2212-1	Transmission Control Arm, LH	1	F373		5/16-24 Hex Nut, LH	1
22	5830-3	Grease Fitting (45 Degree)	1	F385		1/4 x 1-1/4 Roll Pin	1
23	4451-1	Steering Pivot Shaft W/Stop	1	F386		5/16-18 x 1-1/2 x 3/8 Shoulder Bolt	1
24	9704-3	Pivot Rod Bushing / Plastic	2	F391		1/4-20 x 1/2 Set Screw, SS	2
25	4142-2	FSC Friction Washer (1-1/2 x 1-1/32 x 1/16)	1	F407		Belleville Washer 3/8 x 1.187, SS	1
26	5141	FSC Friction Washer (1-1/2 x 3/8 x 1/16)	1	F427		5/16-18 Flange Nut	1
27	4142-1	FSC Cam	1	* Service Part Only			
28	8201-3	Fiberglide Bearing	4				
29	4452-6	Steering Pivot (1/4-20 x 1-5/8)	2				
30	4451-15	Speed Control Actuator, LH (Includes Items # 22 & 28)	1				
31	5463-2	Steering Lever Actuator	2				
32	5222	Extension Spring (1/2 x 3-1/4)	2				
33	5450	D-Clip	2				
34	4452-4	Steering Lever Tube W/Tab	2				
35	5453-10	Steering Lever Handle / Adjustable (Includes Items # 36 & F345)	2				
36	5850-2	Handle Grip, Foam (5-1/2)	2				
37	4451-14	Speed Control Actuator, RH (Includes Items # 14 & 28)	1				

ELECTRICAL ASSEMBLY

ITEM NO.	PART NO.	DESCRIPTION	NO. REQ'D	ITEM NO.	PART NO.	DESCRIPTION	NO. REQ'D
Electrical Assembly				Fasteners			
1	5942-11	Delta Hex Nut	1	F002		10-24 Keps Nut	5
2	5942-9	Safety Switch (NO), Delta Threaded	1	F003		1/4-28 Hex Nut	1
3	7834-3	Wire Saddle (3 Wires)	3	F004		1/4-20 Keps Nut	6
4	7941-3	Boot, Circuit Breaker	1	F019		1/4-20 ESNA Wing Nut	2
5	7941-7	Circuit Breaker (20 Amp)	1	F026		10-24 x 1/2 PPHMS	3
6	8990-1	Hourmeter (Global)	1	F028		10-24 x 3/4 PPHMS	1
7	5975-1	Cable Tie (18# x 3-3/4")	2	F029		1/4-20 x 1/2 Hex Bolt	4
8	5932	Battery Terminal Insulation Black (-)	1	F031		1/4-20 x 5/8 Hex Bolt	2
9	5933	Battery Terminal Insulation Red (+)	1	F032		1/4-20 x 3/4 Hex Bolt	1
10	4940-5	Battery Cable 25"	1	F050		1/4 SAE Washer	4
11	6923-4	Battery Cable 13-1/2" (-)	1	F112		5/8 x 1-1/4 x .03 Washer	3
12	6942	Relay Switch (30/40 Amp) NC (Includes Items # 16 & 17)	3	F349		Washer .835 ID 1.122 OD, SS	1
13	4940-8	Starter Solenoid Cable	1	F381		1/4-20 Hex Nut	1
14	4929	Starter Solenoid	1	F475		1/4-20 x 1 PFH Screw	1
15	5835	Cable Clamp (3/4)	1	F505		6-32 x 7/8 Hex Trim MS, SS	4
16	6941-6	Relay Switch (30/40 Amp)	*	F506		6-32 Nylock Nut	4
17	6941-7	Relay Mount	*	* Service Part Only			
18	4940-1	Wire Harness	1				
19	5942-10	Safety Switch (NC), Delta Side Mount	1				
20	NS	Battery (12V/300CCA/Dry)	1				
21	5839	Hook Bolt	2				
22	4024-13	Safety Switch Plate	1				
23	5942-8	Safety Switch (NO), Delta Side Mount	1				
24	4910-4	Battery Cover	1				
25	8960-15	Ignition Switch W/Keys (Includes Items # 26, 27 & F349)	1				
26	7854	Plastic Tip, Red	1				
27	8960-3	Key Set W/Umbrella	1				

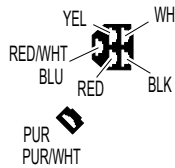
ELECTRICAL ASSEMBLY



DETAIL A



DETAIL B



DETAIL C



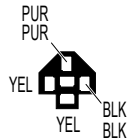
DETAIL D



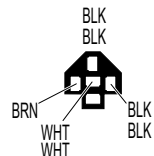
DETAIL E



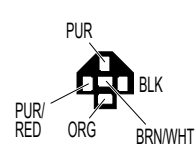
DETAIL F



DETAIL G



DETAIL H



DETAIL I



Beginning S/N 125166
 Effective Date 10-23-13
 Use only genuine **Walker**® replacement parts.

LUBRICATION POINTS

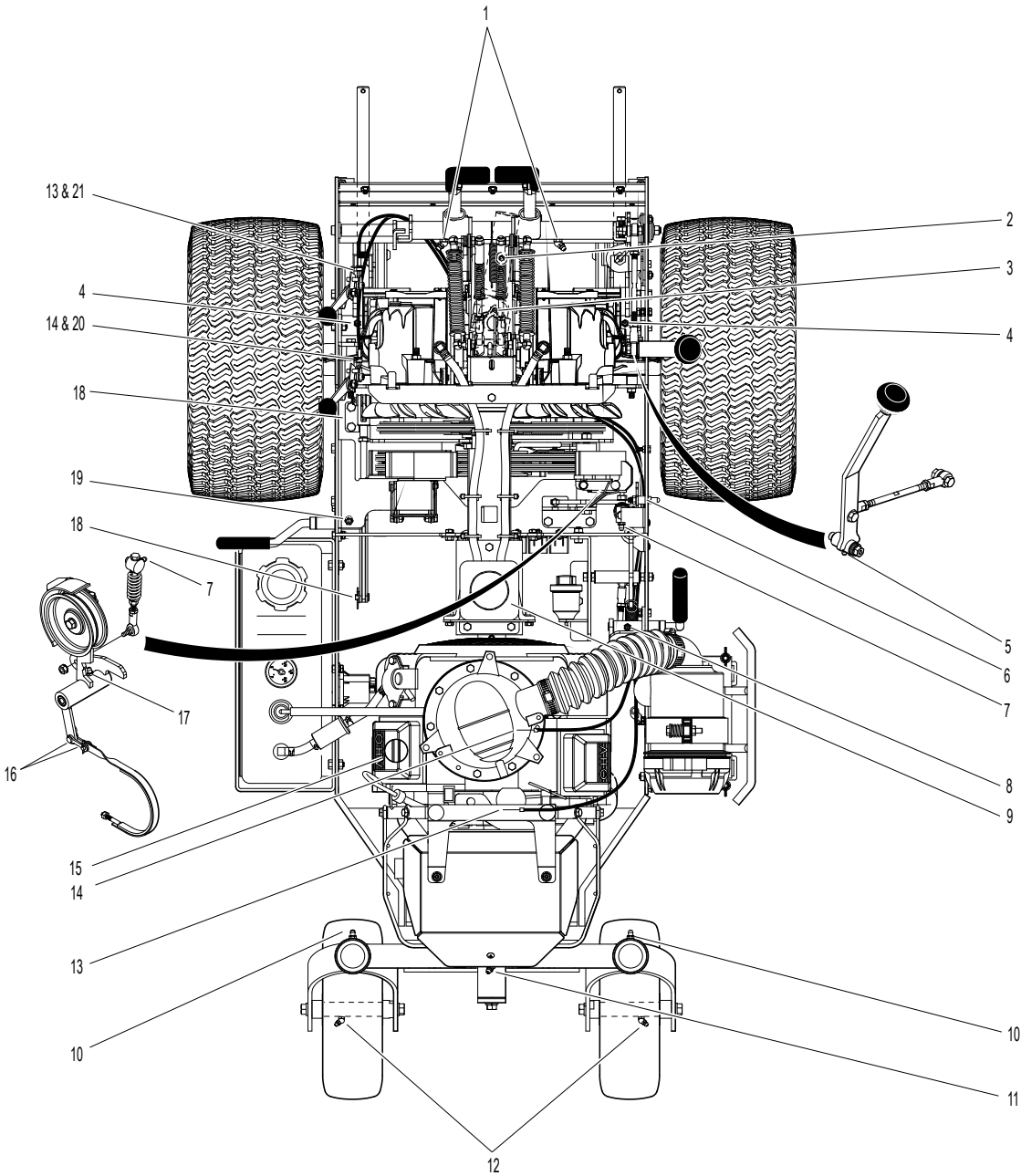
ITEM NO.	LOCATION	LUBRICATION TYPE	NO. PLACES	ITEM NO.	LOCATION	LUBRICATION TYPE	NO. PLACES
Lubrication Points							
1	Steering Lever Pivot	Grease	2	11	Rear Axle Pivot	Grease	1
2	Deck-to-PTO Coupling (Grease Spline Slide Area)	Grease	1	12	Rear Wheel Bearing	Grease	2
3	Universal Joint Tube Assembly	Grease*	1	13	Throttle Control Cable Ends	Oil	2
4	Deck Support Arm Pivot	Grease	2	14	Choke Control Cable Ends	Oil	2
5	FSC Lever Pivot	Grease	1	15	Engine / Oil Filler	Oil**	1
6	Body Latch Pivot	Oil	1	16	Brake Band Pivot Pins (Clevis)	Oil	2
7	Clutch Actuator Spring Assembly	Grease	1	17	PTO Belt Tightener Pivot	Grease	1
8	PTO Clutch Lever Pivot	Grease	1	18	Parking Brake Clevis	Oil	2
9	Transaxle Oil Reservoir	Oil/20W-50	1	19	Parking Brake Lever	Grease	1
10	Tail Wheel Caster Fork Pivot	Grease	2	20	Choke Control Pivot	Oil	1
				21	Throttle Control Pivot	Oil	1

* Grease every eight (8) hours.

** Refer to B18 **Operator's Manual** for procedure for checking and changing oil in Engine Crankcase.

NOTE: See Model B18 **Operator's Manual** (P/N 4000-11) for proper lubrication intervals.

LUBRICATION POINTS



Beginning S/N 125166
Effective Date 10-23-13
Use only genuine **Walker**® replacement parts.

WIRING SCHEMATIC

WALKER MODEL B18 Beginning S/N 2014-125166

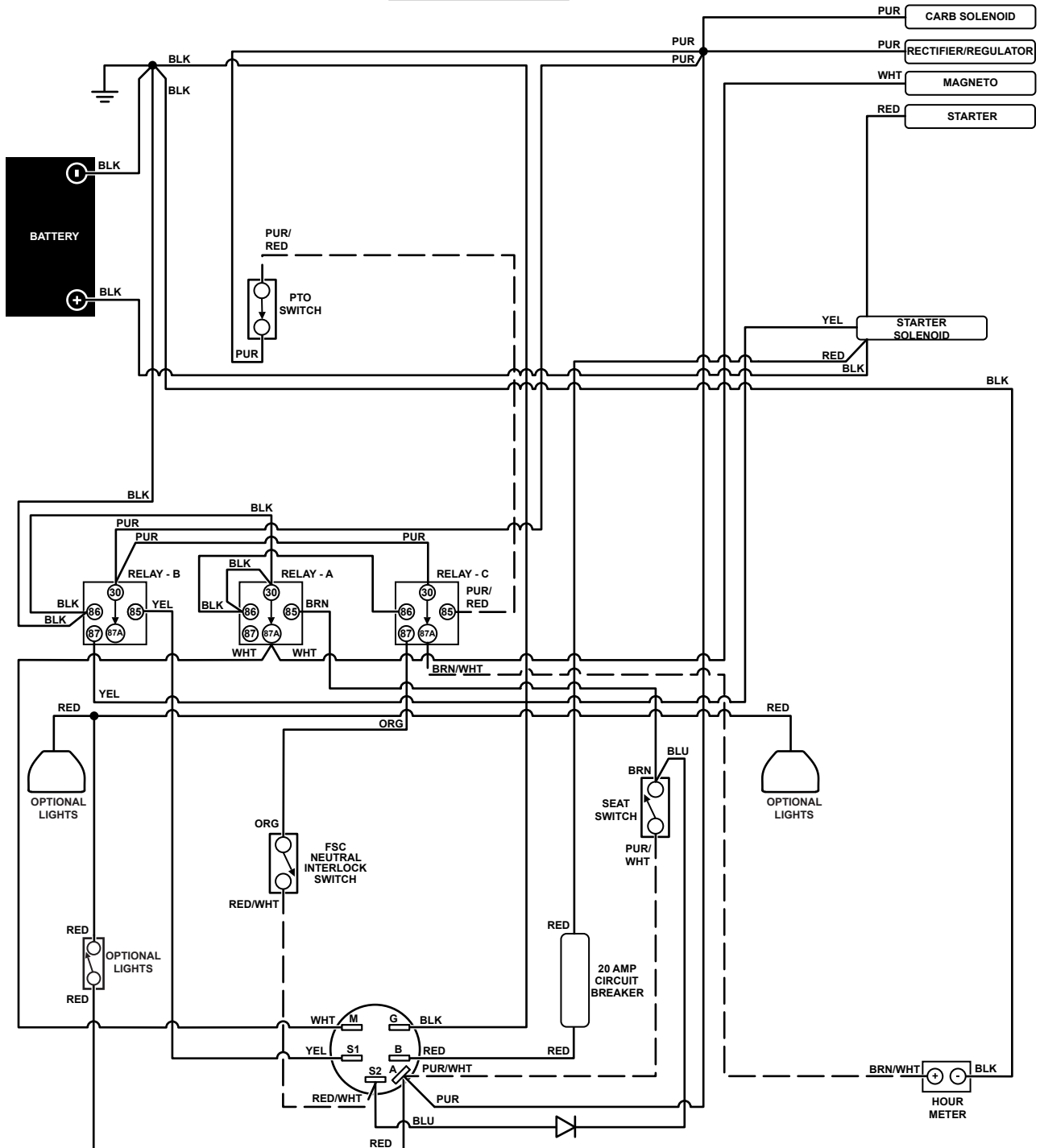
RELAY - A	
IGNITION RELAY	
OFF	30 + 87A
START	30 + 87
RUN	30 + 87
PTO ON	30 + 87A

RELAY - C	
IGNITION RELAY	
OFF	30 + 87A
START	30 + 87
RUN	30 + 87
PTO ON	30 + 87A

RELAY - B	
START RELAY	
OFF	30 + 87A
START	30 + 87
RUN	30 + 87
PTO ON	30 + 87A

IGNITION SWITCH CIRCUITS	
OFF	G + M
START	B + A / S1 + S2
RUN	B + A

S1 = START CIRCUIT
S2 = START/ACCESSORY CIRCUIT
M = MAGNETO GROUND CIRCUIT
B = BATTERY CIRCUIT
A = ACCESSORY CIRCUIT
G = GROUND CIRCUIT



Beginning S/N 125166

Effective Date 10-23-13

Use only genuine Walker® replacement parts.

OPERATOR'S NOTES

LIMITED WARRANTY FOR WALKER MODEL B18 RIDER MOWERS

1. WHAT THIS WARRANTY COVERS, AND FOR HOW LONG:

Walker Manufacturing company will, at its option, repair or replace, without charge, any part covered by this warranty which is found to be defective in material and/or workmanship within one (1) year* after date of sale to the original retail purchaser unless the product is used for rental purposes, in which case this warranty is limited to ninety (90) days. At Walker's request, customer will make the defective part available for inspection by Walker and/or return the defective part to Walker, transportation charges prepaid. All parts and components of the Walker Mower are covered by this warranty **except** the following components which are warranted separately by their respective manufacturers:

Briggs & Stratton Engine
Hydro-Gear Transaxles
Battery
Tires

The available warranties covering these items are furnished with each mower. Walker does not assume any warranty obligation, liability or modification for these items, which are covered exclusively by the stated warranty of the respective manufacturers noted above.

* Extended warranties are offered for the following powertrain components:

- A two (2) year or 2000 hour (whichever comes first) warranty is offered for Hydro-Gear ZT3100 Hydrostatic transaxle; covers full cost of replacement up to 1000 hours of use, and after 1000 hours warranty coverage is prorated against 2000 hours.

2. WHAT THIS WARRANTY DOES NOT COVER:

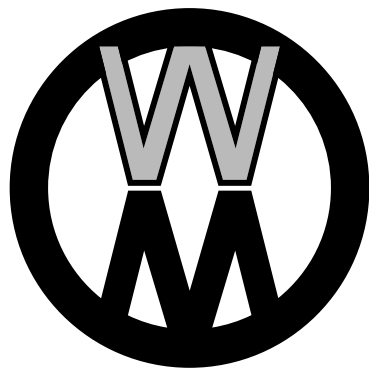
- A. This warranty does not cover defects caused by depreciation or damage caused by normal wear, accidents, improper maintenance, improper use or abuse of the product, alterations, or failure to follow the instructions contained in the Operator's Manual for operation and maintenance.
- B. The customer shall pay any charges for making service calls and/or for transporting the mower to and from the place where the inspection and/or warranty work is performed.

3. HOW TO OBTAIN SERVICE UNDER THIS WARRANTY:

Warranty service can be arranged by contacting the dealer where you purchased the mower or by contacting Walker Manufacturing Company, 5925 East Harmony Road, Ft. Collins, CO 80528. Proof of the date of purchase may be required to verify warranty coverage.

4. WARRANTY LIMITATION:

- A. **THERE IS NO OTHER EXPRESS WARRANTY. ANY WARRANTY THAT MAY BE IMPLIED FROM THIS PURCHASE INCLUDING MERCHANTABILITY AND FITNESS FOR A PARTICULAR PURPOSE IS HEREBY LIMITED TO THE DURATION OF THIS WARRANTY AND TO THE EXTENT PERMITTED BY LAW ANY AND ALL IMPLIED WARRANTIES ARE EXCLUDED.** Some states do not allow limitations on how long an implied warranty lasts, so the above limitations may not apply to you.
- B. **WALKER WILL NOT BE LIABLE FOR ANY INCIDENTAL, CONSEQUENTIAL, OR SPECIAL DAMAGES AND/OR EXPENSES IN CONNECTION WITH THE PURCHASE OR USE OF THE MOWER.** Some states do not allow the exclusion or limitation of incidental or consequential damages, so the above limitation(s) or exclusion(s) may not apply to you.
- C. Only the warranty expressed in this limited warranty shall apply and no dealer, distributor, or individual is authorized to amend, modify, or extend this warranty in any way. Accordingly, additional statements such as dealer advertising or presentations, whether oral or written, do not constitute warranties by Walker, and should not be relied upon.
- D. This warranty gives you specific legal rights, and you may also have other rights which vary from state to state.



WALKER

WALKER MFG. CO. • 5925 E. HARMONY ROAD, FORT COLLINS, CO 80528 • (970) 221-5614
FORM NO. 092115 PRINTED IN USA www.walkermowers.com ©2015 WALKER MFG. CO