

2015

Detach Instructions for Turf Spray System

SNOWRATOR

We appreciate your purchase of L.T. Rich's Product. Please read carefully before Operating or detaching.



JLD
L.T.RICH
1/4/2015



WARNING 2

DETACH TURF SPRAY SYSTEM 2

1. *DETACH* HOSE AT QUICK RELEASE FITTING 2

2. *REMOVE* ZIP TIE FROM HOSE 3

3. *REMOVE* (3) BOLTS IN FRAME USING ½" SOCKET (RE-INSTALL BOLTS INTO HOLES TO STORE) 3

4. *STORE* **SPRAY SYSTEM** FOR FUTURE USE. 3

WARNING



WARNING

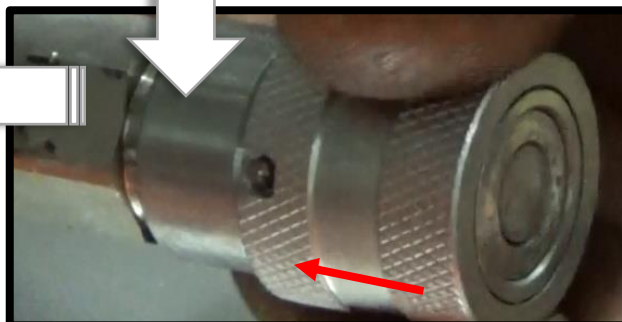
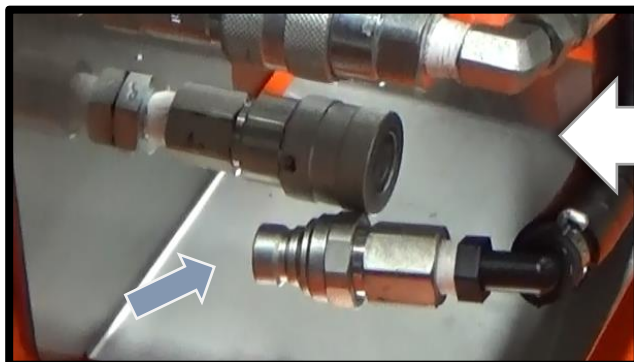
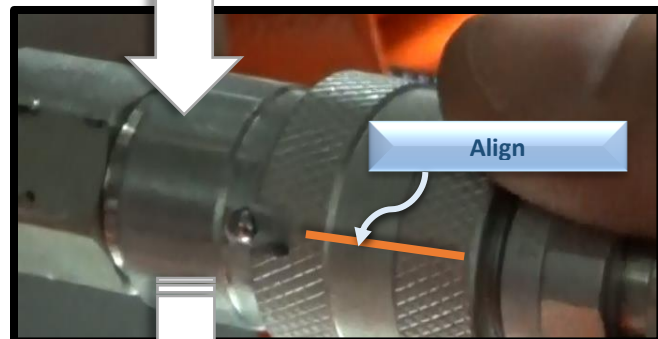
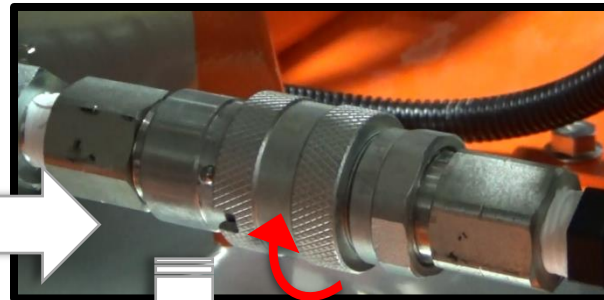
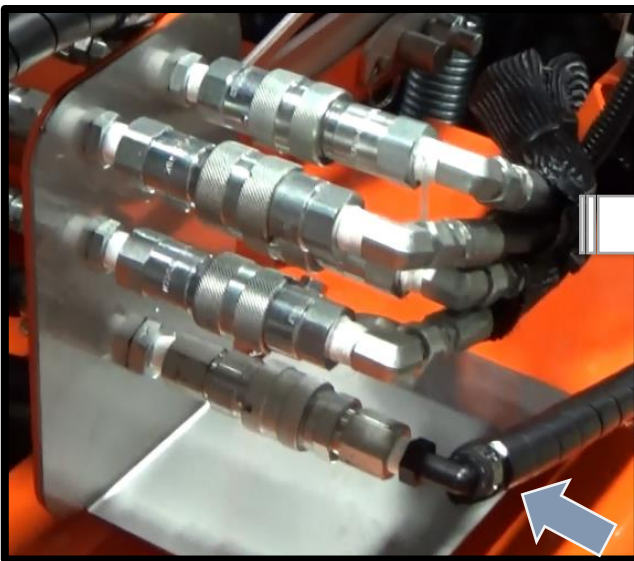
Before Working on This Machine

1. Switch Engine to OFF



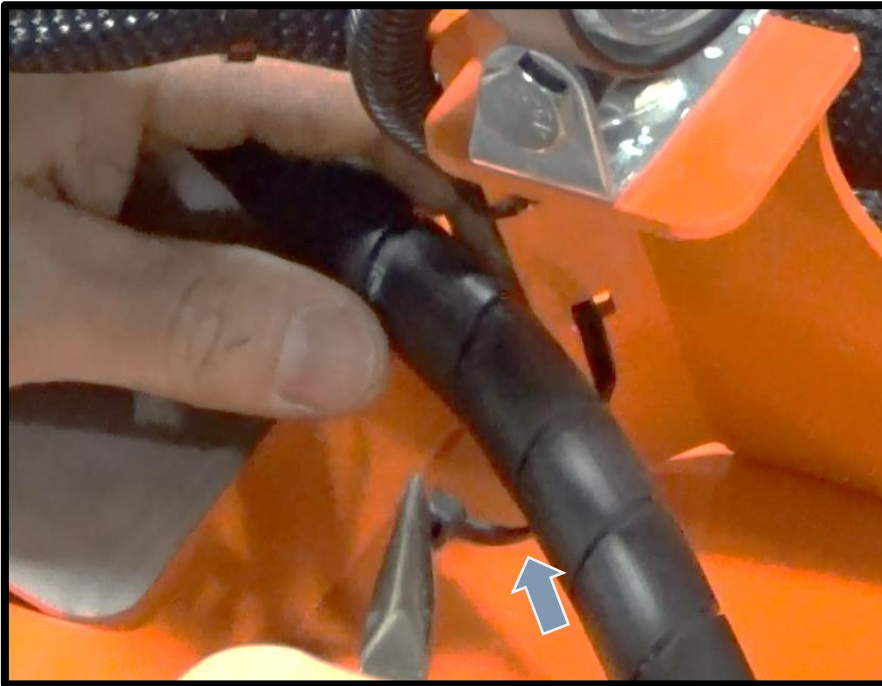
Detach Turf Spray System

1. *Detach* Hose at Quick Release Fitting
 - a. *Identify* Hose for Spray System
 - b. *Align* Notch with Quick Release Ball
 - c. *Push* Connector in to Release Hose

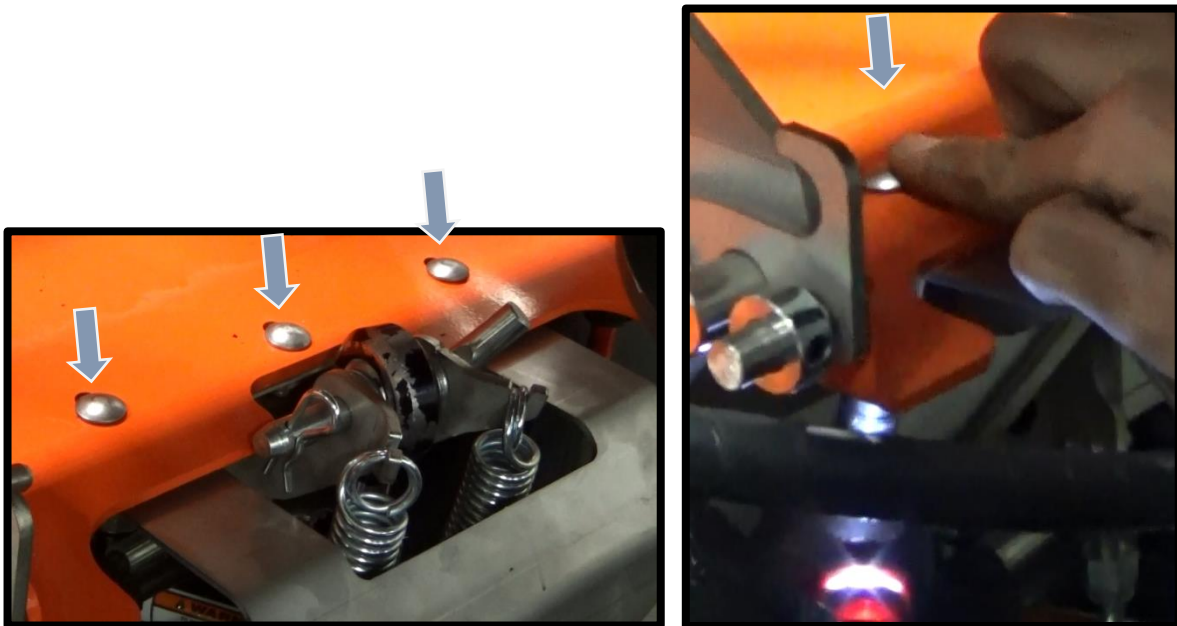


Detach Spray System

2. Remove Zip Tie from hose



3. Remove (3) Bolts in frame using $\frac{1}{2}$ " Socket (Re-install Bolts into holes to store)



4. Store Spray System for future use.

For any questions please contact us at toll free (877) 482-2040, Mon-Fri 8 a.m. to 4:30 p.m.