

2016

Installation Instructions for Mulch Hopper System SNOWRATOR

We appreciate your purchase of L.T. Rich's Product. Please read carefully before Operating or detaching.

IMPORTANT!!!

This job
requires (2)
people to
complete
safely



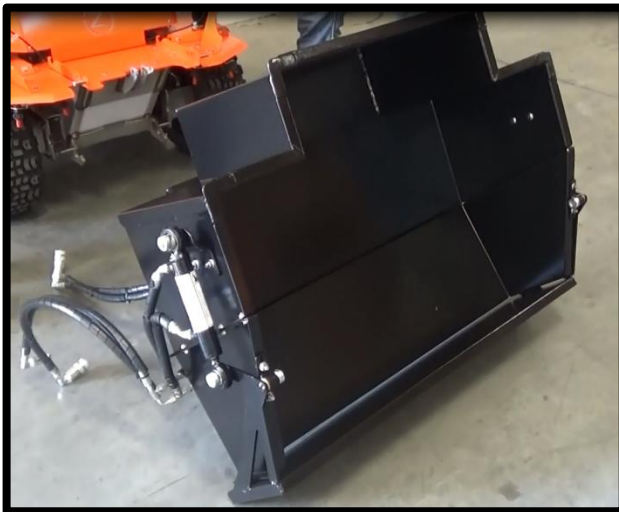
JLD
L.T.RICH
5/5/2016



SHIPPING CONTENTS	2
1. PARTS	2
2. FASTENERS	2
3. TOOLS NEEDED	2
WARNING	3
.....	3
INSTALL MULCH HOPPER	3
1. LAY QUICK RELEASE PINS NEAR INSERT HOLE FOR EASY ACCESS	3
2. LIFT HOPPER INTO PLACE.....	3
3. SLIDE HOPPER PIN INTO PLATE REAR SLOT	4
4. LOWER HOPPER FRONT PIN INTO PLATE POCKET	4
5. INSERT QUICK-RELEASE PIN	5
ATTACH HYDRAULIC HOSES	5
1. INSTALL HOSES TO HOSE PANEL	5
.....	6
TEST MULCH HOPPER	6
1. TURN ON UNIT	6
2. OPERATE MULCH HOPPER BY SHIFTING VALVE HANDLE INTO PLACE	6
INSTALL WEIGHT BRACKETS AND WEIGHTS	7
1. REMOVE (2) REAR WHEELS FOR EASIER ACCESS TO FENDER MOUNTING HOLES	7
2. IDENTIFY LEFT VS RIGHT WEIGHT BRACKETS	7
.....	7
3. INSTALL RIGHT WEIGHT BRACKET	7
.....	9
4. INSTALL LEFT WEIGHT BRACKET.....	9
5. INSTALL WEIGHTS ONTO BRACKET.....	11
6. RE-INSTALL WHEELS	11
7. RE-INSTALL BATTERY	11

SHIPPING CONTENTS

1. Parts
 - a. Hopper (with fittings and Hoses)
 - b. Weight Brackets, (1) Left, (1) Right
 - c. Weights, (1) Left, (1) Right
2. Fasteners
 - a. (4) 3/8 X 1" Flange Bolts
 - b. (4) 3/8 Flange Nuts
 - c. (2) Quick-Release Pins
 - d. (4) Locking Rings
 - e. (4) 5/16" x 1" Bolts
3. Tools Needed
 - a. 9/16" Wrench
 - b. 9/16" Socket
 - c. 1/2" Wrench
 - d. 1/2" Socket



WARNING



WARNING

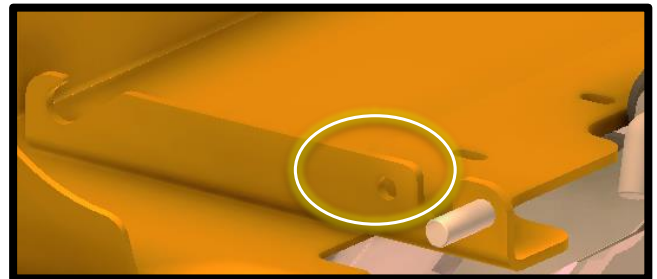
Before Working on This Machine

1. Switch Engine to OFF



Install Mulch Hopper

1. Lay Quick Release Pins near Insert Hole for easy access



2. Lift Hopper into place (forward tilt Hopper)



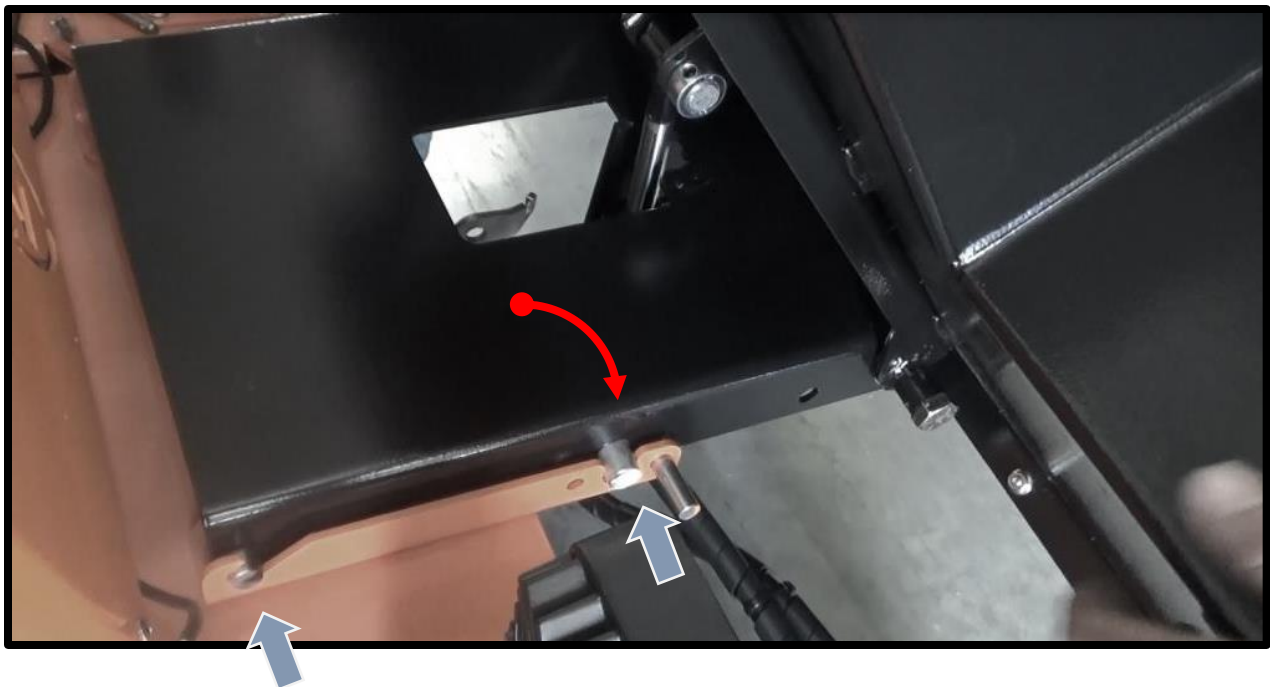
IMPORTANT!!!

This job
requires (2)
people to
complete
safely

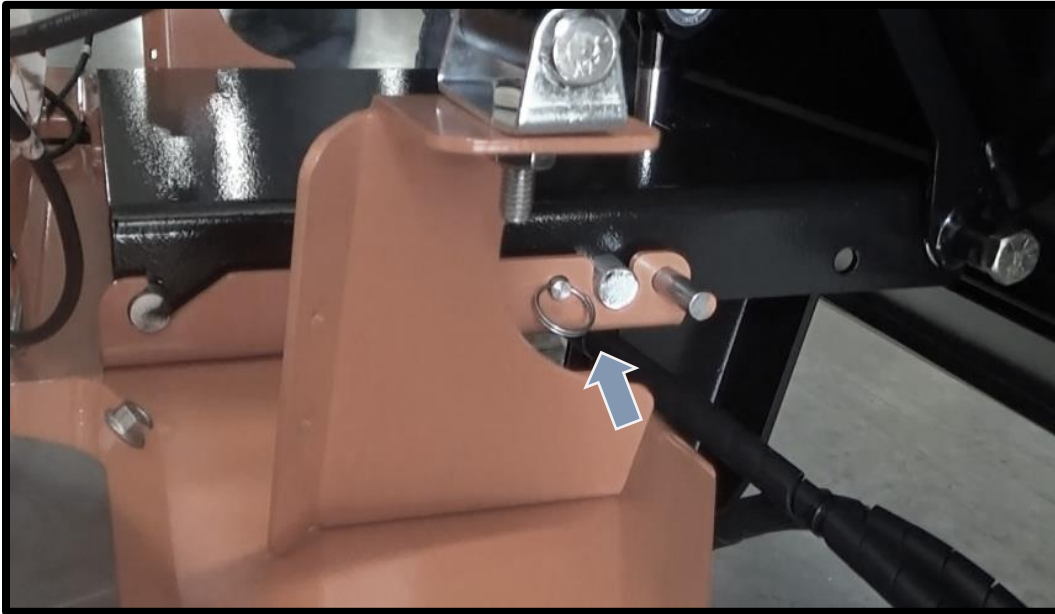
3. *Slide Hopper Pin into Plate Rear Slot*



4. *Lower Hopper Front Pin into Plate Pocket*

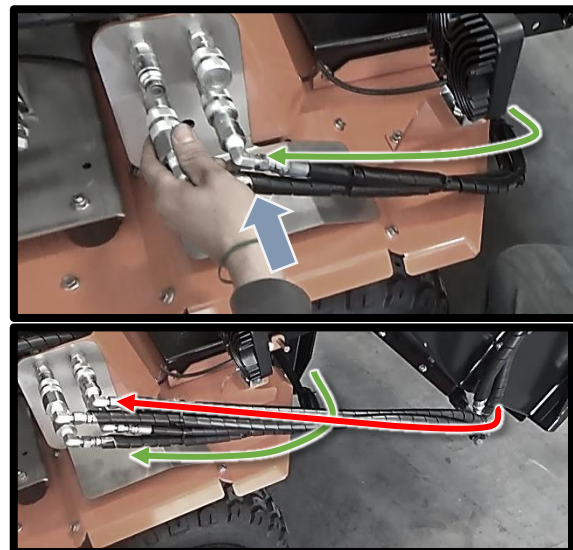
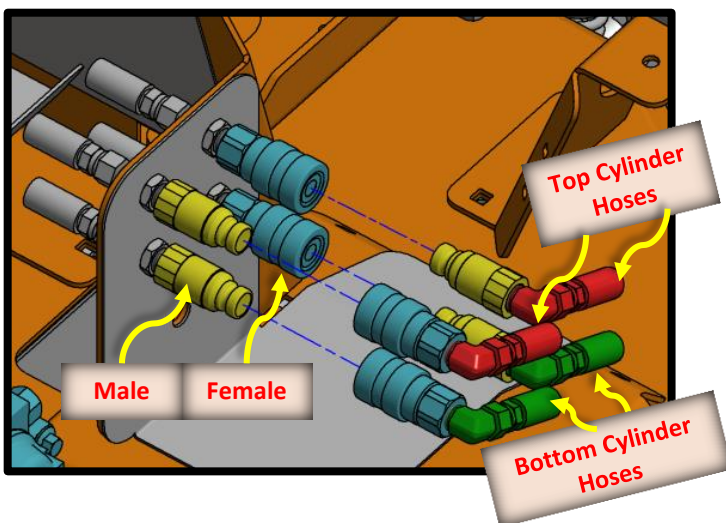


5. *Insert Quick-Release Pin*



Attach Hydraulic Hoses

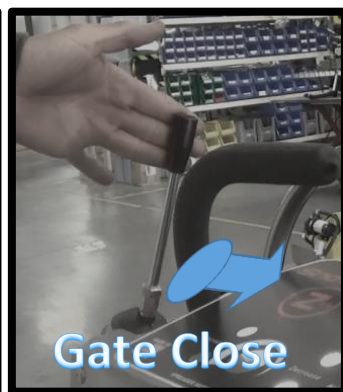
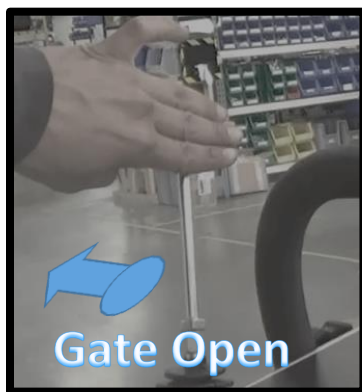
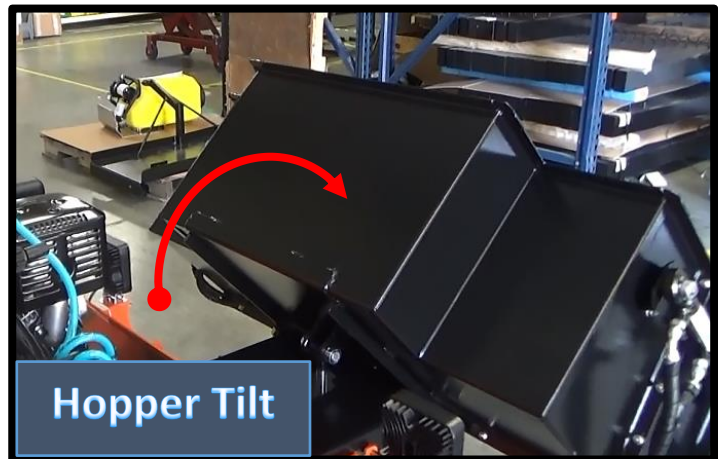
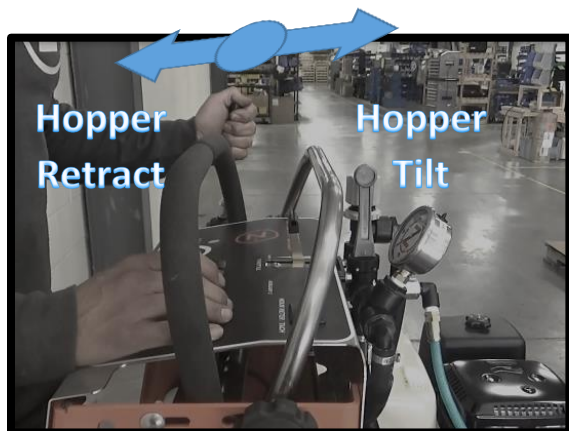
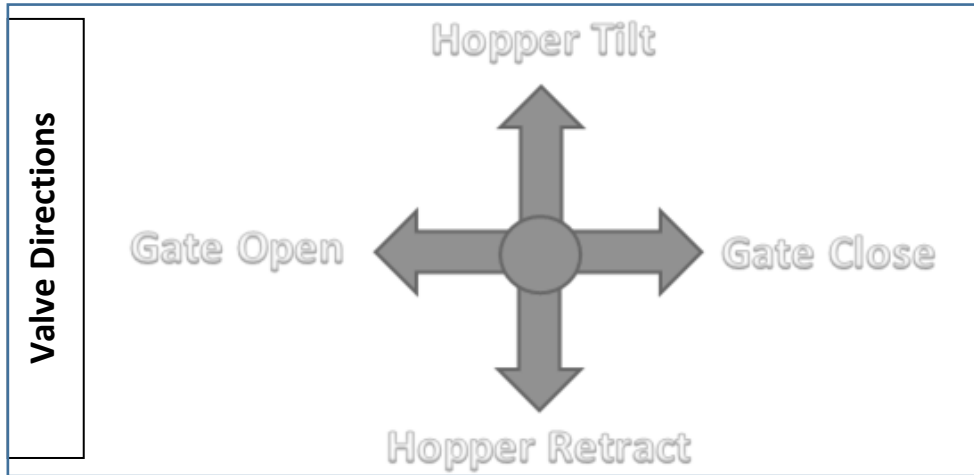
1. *Install Hoses to Hose Panel*
 - a. *Connect Bottom Cylinder Hoses to Bottom Fittings Set (Male to Female)*
 - b. *Connect Top Cylinder Hoses to Top Fittings Set (Male to Female)*





Test Mulch Hopper

1. Turn **ON** Unit
2. Operate Mulch Hopper by Shifting Valve Handle into place

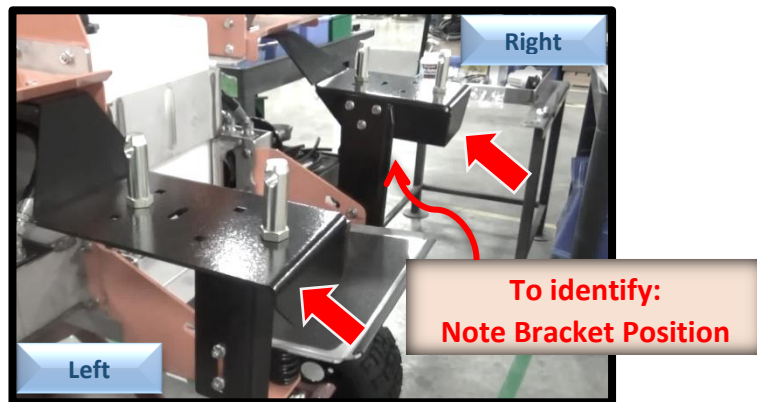


Install Weight Brackets and Weights

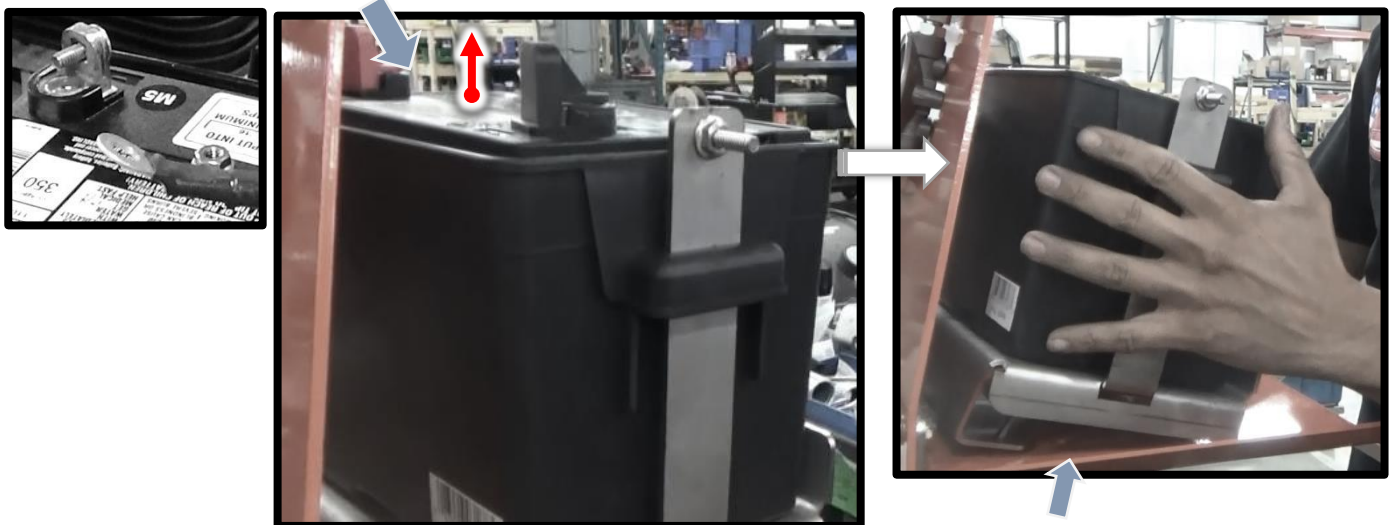
1. Remove (2) Rear Wheels for easier access to Fender Mounting Holes



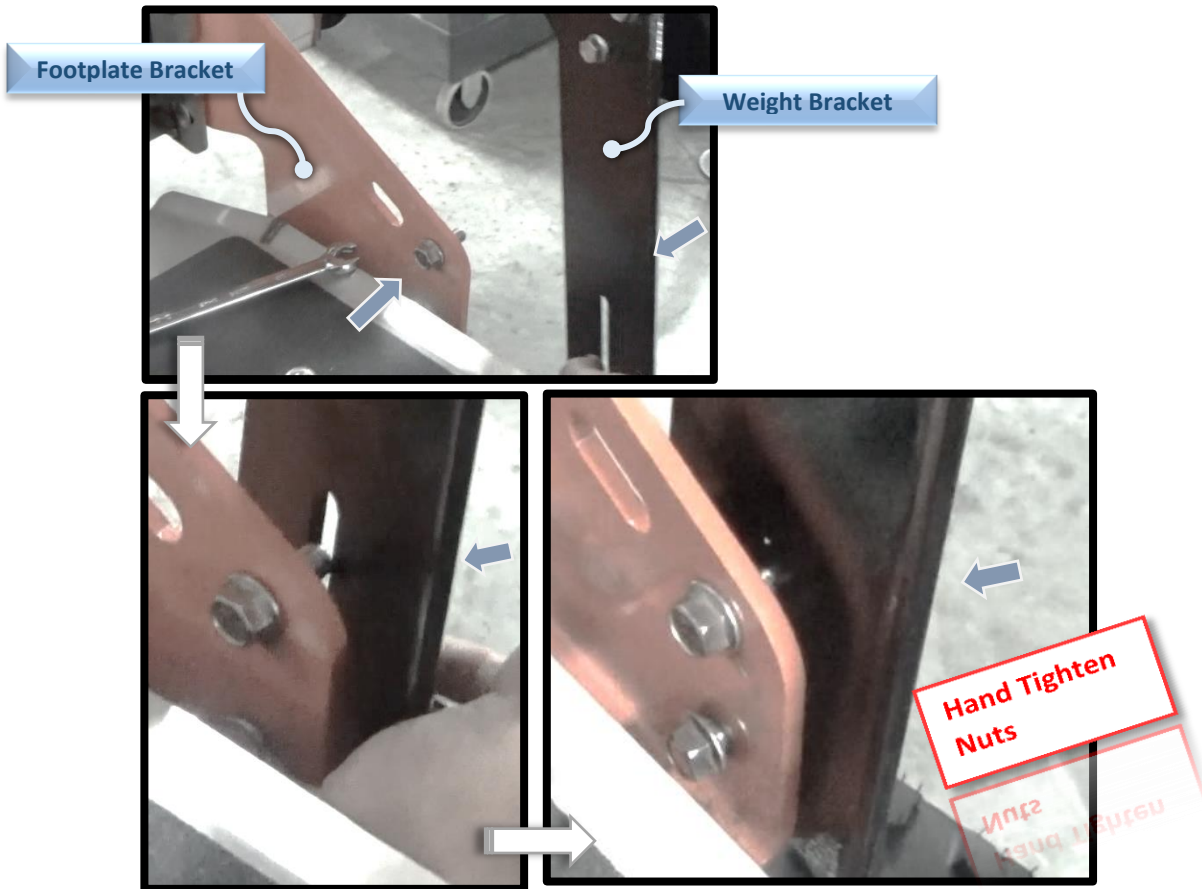
2. Identify Left Vs Right Weight Brackets



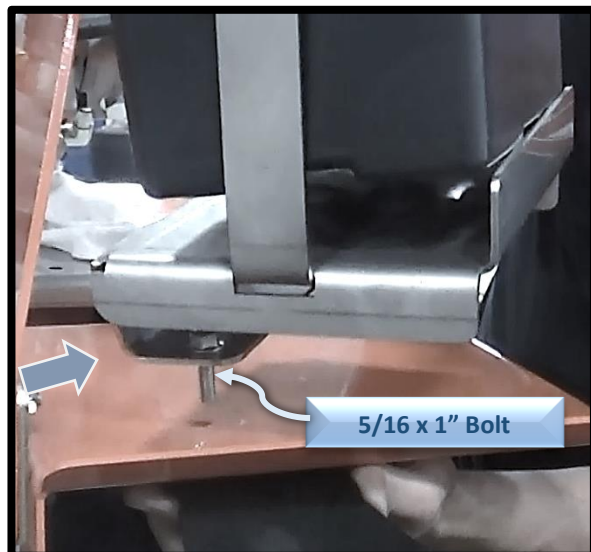
3. Install Right Weight Bracket
 - a. Un-Attach Battery Cables from Battery
 - b. Remove Battery from Box (easier to install Weight Bracket)
 - c. Remove Box from Fender using 1/2" Socket or Wrench



- d. *Insert (2) 3/8 X 1" Bolt* (Provided) into Footplate Bracket
- e. *Line up Slot in Weight Bracket* with Bolts
- f. *Hand Tighten Nuts* (Provided)



- g. *Replace (2) 5/16" x 3/4" Bolts* in Battery Bracket with 5/16" x 1" Bolts (provided)
- h. *Assemble Weight Bracket to Fender and Battery Bracket*
- i. *Hand-Tighten Nuts*



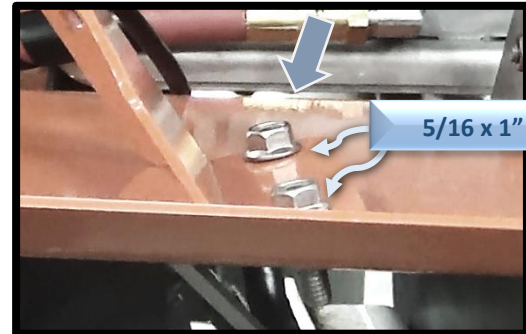
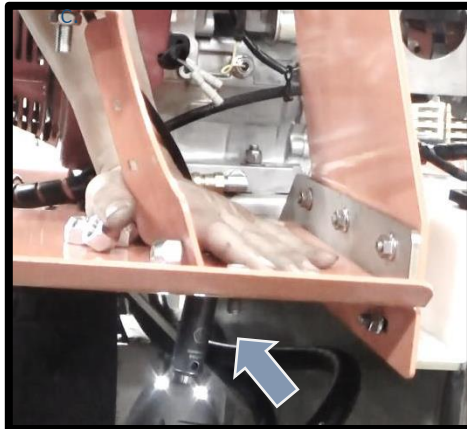
j. Tighten all (4) Bolts to Foot Plate Bracket and Fender



4. Install Left Weight Bracket

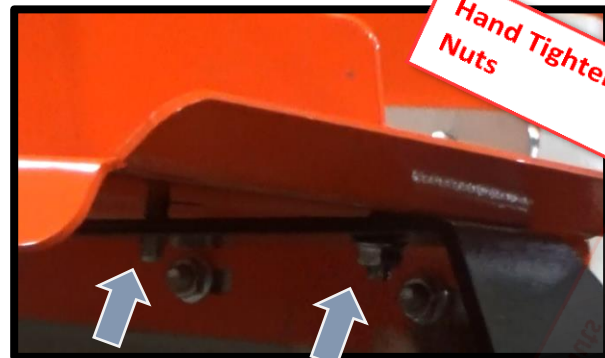
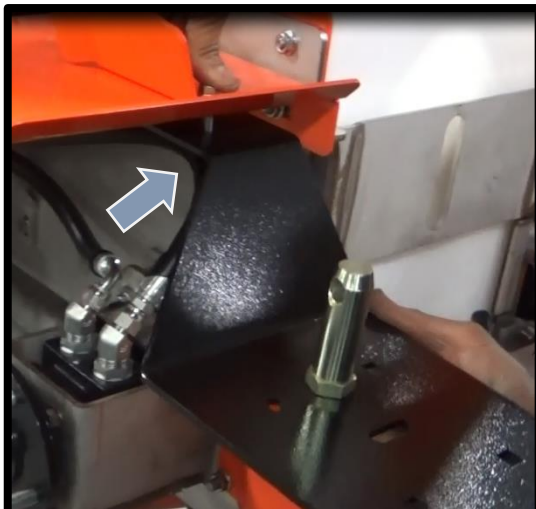
a. Remove (2) 5/16" x 3/4" Bolts from Rear Light Bracket

b. Replace Bolts with 5/16" x 1" Bolts (provided) using 1/2" Socket or Wrench

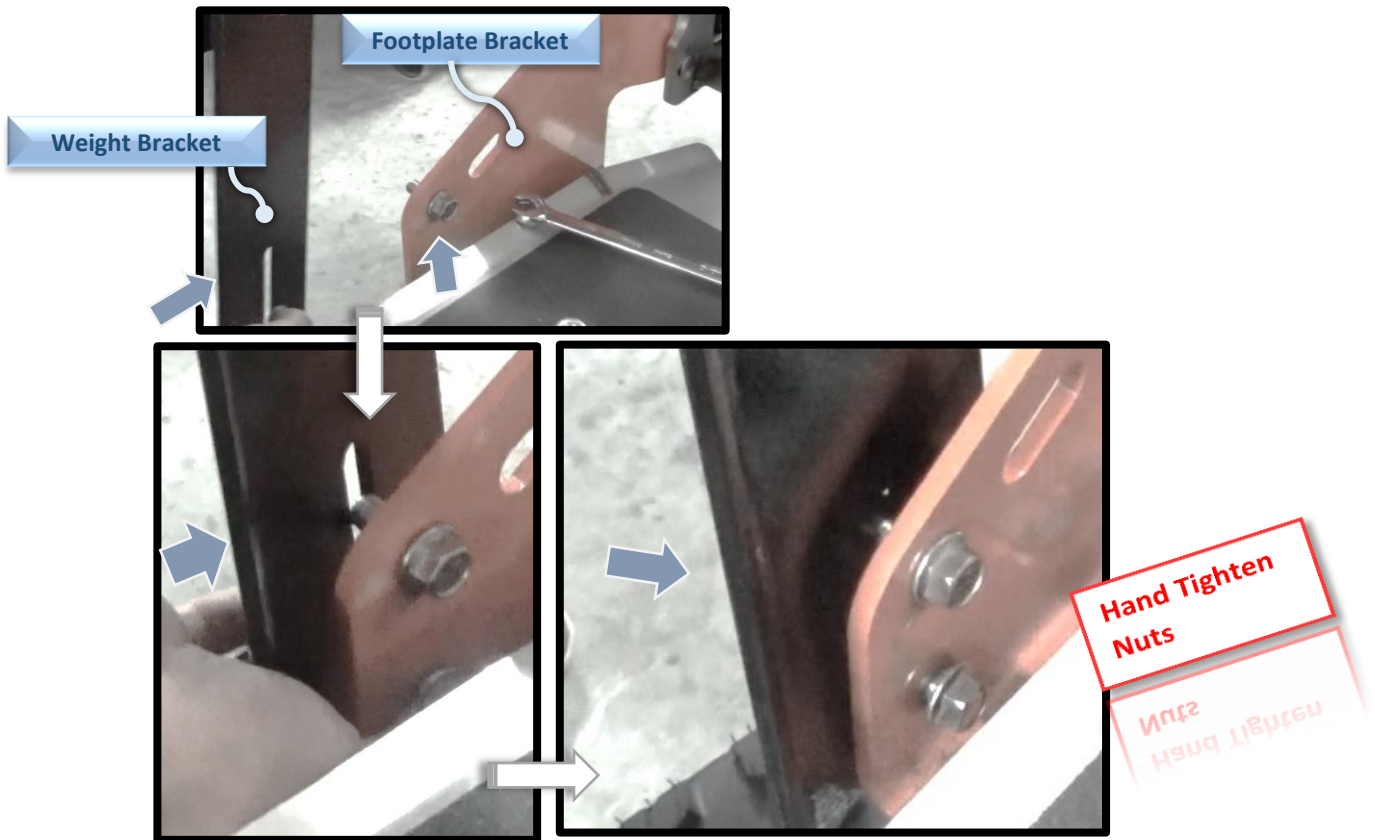


a. Assemble Weight Bracket to Fender and Rear Light Bracket

b. Hand-Tighten Nuts



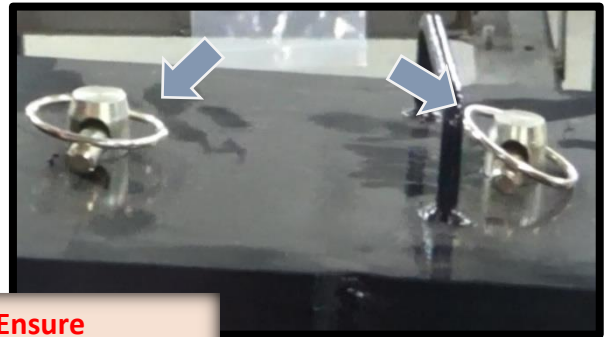
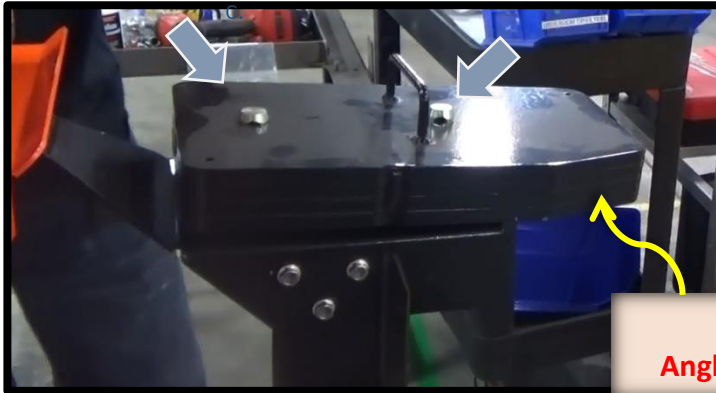
- c. *Insert (2) 3/8 X 1" Bolt* (Provided) into Footplate Bracket
- d. *Line up Slot in Weight Bracket* with Bolts
- e. *Hand Tighten Nuts* (Provided)



- f. *Tighten all (4) Bolts* to Foot Plate Bracket and Fender

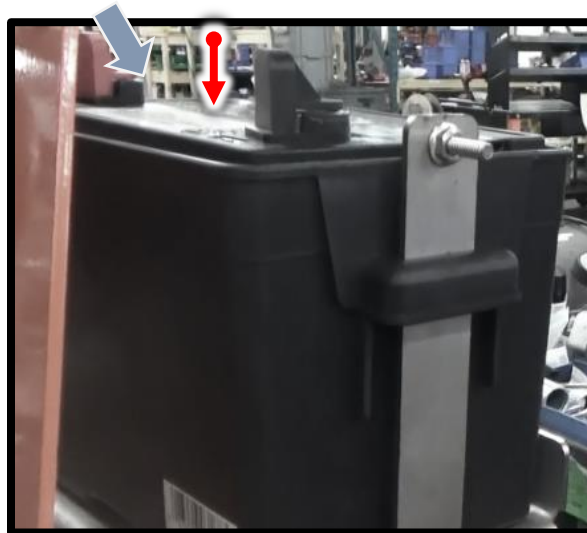


5. *Install Weights onto Bracket*
 - a. *Place Weight onto Pins – Angle to inside unit*
 - b. *Secure Weight to Quick-Release Pin using Locking Ring*



**Ensure
Angle to inside Unit**

6. *Re-Install Wheels*
7. *Re-Install Battery*



For any questions please contact us at toll free (877) 482-2040, Mon-Fri 8 a.m. to 4:30 p.m.