

BODY / CHASSIS ASSEMBLY

ITEM NO.	PART NO.	DESCRIPTION	NO. REQ'D	ITEM NO.	PART NO.	DESCRIPTION	NO. REQ'D
Body Assembly				42	9433	Deck Arm Mount, LH (Includes Item # 26)	1
1	9800	Decal, Walker By Walker	1	43	5862	FSC Knob	1
2	5805	Decal, Engine Exhaust	1	44	9347-1	Spring, Lift Rod	1
3	9100	Hood (Includes Items # 1 & 2)	1	45	9344	Deck Spring Hitch	1
4	9110	Hood Latch Assembly	1	46	9346	Spring Clip Lock	1
5	5803	Decal, Walker Manufacturing	1	47	9345	Lock Arm, Spring Hitch	1
6	9801	Decal, Control Panel	1	48	7222	Extension Spring (1-1/4 x 3)	1
7	9851	Handlebar End Plug	2	Tilt-Up Latch Assembly			
8	9850	Handlebar Grip, Foam	2	49	5847	Plastic Tip	1
9	5856	Decal, Made In USA	1	50	5744-20	Spring Arm, Tilt-Up Latch	1
10	9700	Handlebar (Includes Items # 7 & 8)	1	51	5744-10	Spring Pivot Bushing	1
11	9700-1	Cover Plate, Control	1	52	5744-15	Compression Spring (3/8 x 5/8)	1
12	9101	Hood Support, Rear	1	53	5744-14	Mount Angle, RH	1
13	9046	Gas Tank Mount	1	54	5744-12	Hook, Tilt-Up Latch	1
Chassis Assembly				55	5744-13	Mount Angle, LH	1
14	9803	Decal, Blade Clutch	1	Fasteners			
15	9804	Decal, Gearaxle Lockout	2	F002	10-24 Keps Nut		11
16	9300	Chassis Frame	1	F004	1/4-20 Keps Nut		6
17	5075	LP Wheel & Tire (18 x 8.5-10)	2	F005	1/4-20 ESNA Nut		5
18	9102	Cable	2	F009	5/16-18 Whiz Locknut		16
19	9310	Battery Strap	1	F012	3/8-16 Keps Nut		1
20	9620	Actuator Mount Tab	1	F013	3/8-16 Whiz Locknut		4
21	9802	Decal, Parking Brake	1	F015	1/2 Wheel Lug Nut		8
Tail Wheel Assembly				F020	5/16-18 ESNA Nut		6
22	8769-9	Dust Cap Deck Caster	1	F023	10-24 ESNA Nut		2
23	8037	Bearing Cone (3/4 ID)	4	F025	10-24 x 3/8 PPHMS		7
24	8769-1	Bearing Cup, Caster Fork	4	F026	10-24 x 1/2 PPHMS		4
25	9771	Mount, Caster Fork (Includes Item # 24 & 26)	1	F027	10-24 x 5/8 PPHMS		2
26	5830	Grease Fitting	4	F029	1/4-20 x 1/2 Hex Bolt		4
27	8768-1	Seal	1	F031	1/4-20 x 5/8 Hex Bolt		4
28	5770-1	Caster Wheel Fork	1	F032	1/4-20 x 3/4 Hex Bolt		3
29	5715-4	Caster, Wheel Pneu. (8 x 3.00-4)	1	F034	5/16-18 x 3/4 Hex Bolt		6
30	5715-5	Bearing, Caster Wheel	4	F035	5/16-18 x 1-1/4 Hex Bolt		2
31	5714-7	Bearing Cap	2	F047	3/8-16 x 4-1/2 Hex Bolt		1
32	5830-3	Grease Fitting (45 Deg.)	1	F055	5/8 SAE Washer		1
33	5714-3	Axle Spacer Tube	1	F058	1/4 Wave Spring Washer		1
Deck Support Arm & Hitch Assemblies				F068	1/8 x 1 Cotter Pin		1
34	9430-1	Spacer Tube, MW Deck Arm	2	F093	5/16-18 x 1 Hex Bolt		4
35	9434	Deck Arm Mount, RH (Includes Item # 26)	1	F098	5/8-18 Slotted Hex Nut		1
36	9023	6mm x 20mm Dowel Pin	2	F151	3/8-16 x 7/8 Hex Bolt		4
37	9431	Deck Arm, LH	1	F182	1/4 x 5/8 x 1/8 Washer		1
38	9432-1	Dampener Bushing	4	F235	5/16-18 x 2-1/2 Hex Bolt		4
39	9432-2	Dampener Spacer (3/8 x 1/2)	4	F255	5/16-18 x 1-1/2 Hex Bolt		2
40	9432	Dampener, Deck Arm	2	F275	5/16-18 x 2 Hex Bolt		2
41	9430	Deck Arm, RH	1	F341	Coil Roll Pin (7/64 x 9/16)		1
				F342	5/16 Conical Washer		2
				F375	64AAD Alum Pop Rivet (3/16 DIA x 1/4 Grip)		4

Use only genuine **Walker**[®] replacement parts.

Effective Date 11-01-03

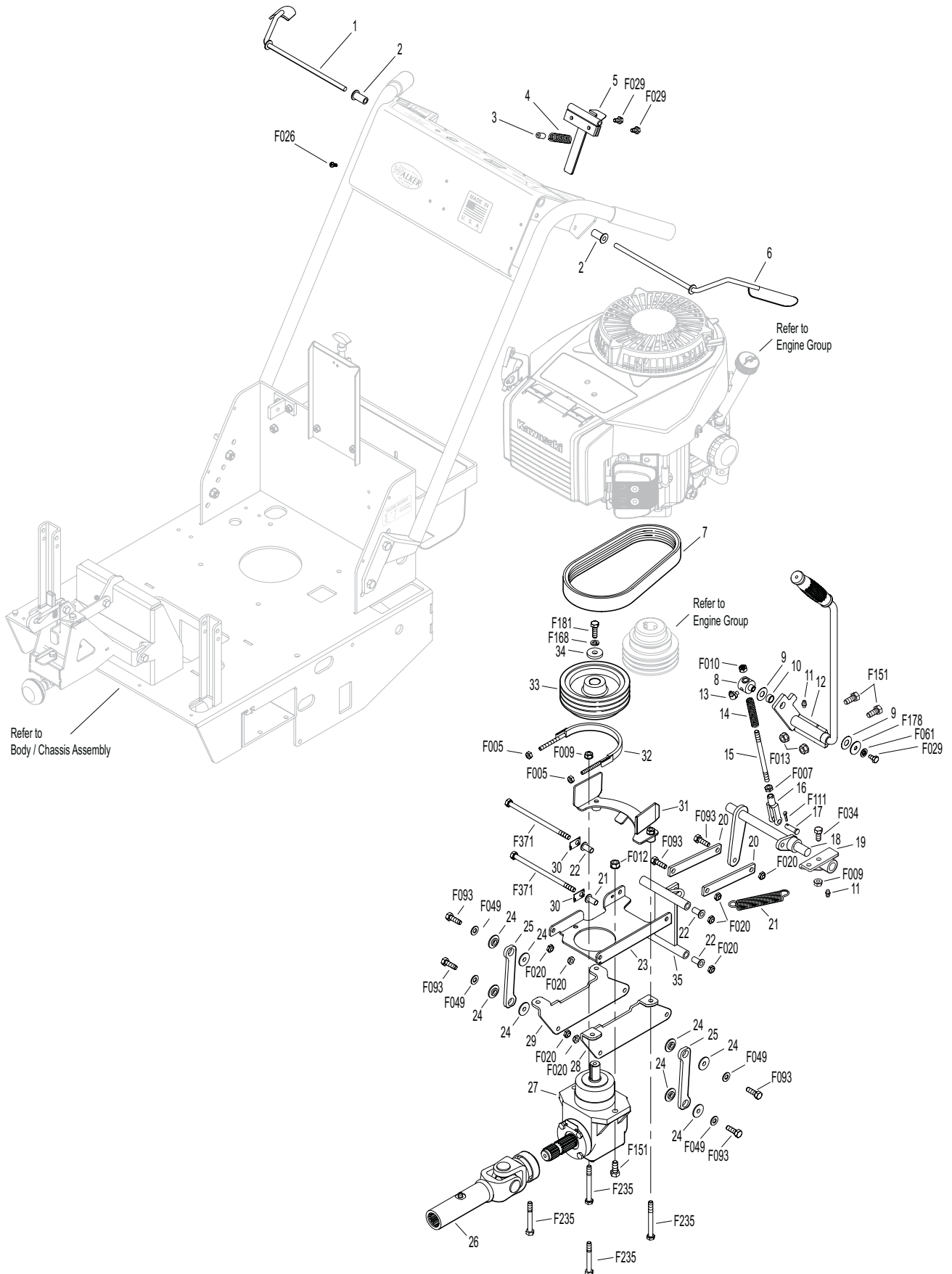
MAIN COMPONENT POWER TRANSMISSION

ITEM NO.	PART NO.	DESCRIPTION	NO. REQ'D	ITEM NO.	PART NO.	DESCRIPTION	NO. REQ'D
Safety Switch Actuator Assembly				27	9050	PTO Gearbox	1
1	9744	Safety Switch Lever, RH	1	28	9303	PTO Mount Side Plate, LH	1
2	5103-2	Pivot Bushing (5/16 ID)	2	29	9304	PTO Mount Side Plate, RH	1
3	9742-2	Plastic Bushing (5/8 x 3/8)	1	30	9309	5/16 Tab Lock Washer	2
4	9742-1	Compression Spring (3/8 x 5/8)	1	31	9480	Belt Guide (Includes Item # F009)	1
5	9742	Safety Switch Actuator	1	32	9301	Brake Band	1
6	9743	Safety Switch Lever, LH	1	33	9236	PTO Pulley (5/3V) (Includes Items # 34, F067, F168 & F181)	1
PTO Drive Assembly				34	9051	5/8 x 1-1/8 x 3/8 Washer	1
7	9230	PTO Drive Belt	1	35	9306	Front Pivot, PTO Gearbox	1
8	7380-5	Knuckle Joint (3/8 ID)	1	Fasteners			
9	7377	Plastic Washer (7/16 x 1 x .025)	2	F005	1/4-20 ESNA Nut	2	
10	7378	Pivot Bearing (7/16 x 9/16)	1	F007	5/16-18 Jam Nut	1	
11	5830	Grease Fitting	2	F009	5/16-18 Whiz Locknut	5	
12	9358	Clutch Lever (Includes Item # 11)	1	F010	5/16-24 ESNA Nut	1	
13	5830-4	Grease Fitting (90 Deg.)	1	F012	3/8-16 Keps Nut	2	
14	9130-1	Clutch Actuator Spring	1	F013	3/8-16 Whiz Locknut	2	
15	9130-2	Clutch Actuator Rod	1	F020	5/16-18 ESNA Nut	8	
16	9130-3	Clevis	1	F026	10-24 x 1/2 PPHMS	1	
17	9130-4	5/16 x 1 Clevis Pin	1	F029	1/4-20 x 1/2 Hex Bolt	3	
18	9359	Lower Clutch Pivot	1	F034	5/16-18 x 3/4 Hex Bolt	2	
19	9359-1	Pivot Mount, Clutch (Includes Item # 11)	1	F049	5/16 SAE Washer	4	
20	9307	Link, PTO Actuator	2	F061	1/4 Star Lock Washer	1	
21	5221	Extension Spring (3/4 x 4)	1	F093	5/16-18 x 1 Hex Bolt	6	
22	9306-1	Plastic Bushing, Rear Pivot	4	F111	1/8 x 3/4 Cotter Pin	1	
23	9302	PTO Gearbox Mount Plate	1	F151	3/8-16 x 7/8 Hex Bolt	4	
24	9305-1	Plastic Bushing, Front Pivot	8	F168	5/16 Split Lock Washer	1	
25	9305	Swingarm, PTO Gearbox	2	F178	1/4 x 1 Fender Washer	1	
26	7275-16	U-Joint Tube Assy, Spline	1	F181	5/16-24 x 1 Hex Bolt	1	
				F235	5/16-18 x 2-1/2 Hex Bolt	4	
				F371	5/16-18 x 6 Hex Bolt	2	

Use only genuine Walker® replacement parts.

Effective Date 11-01-03

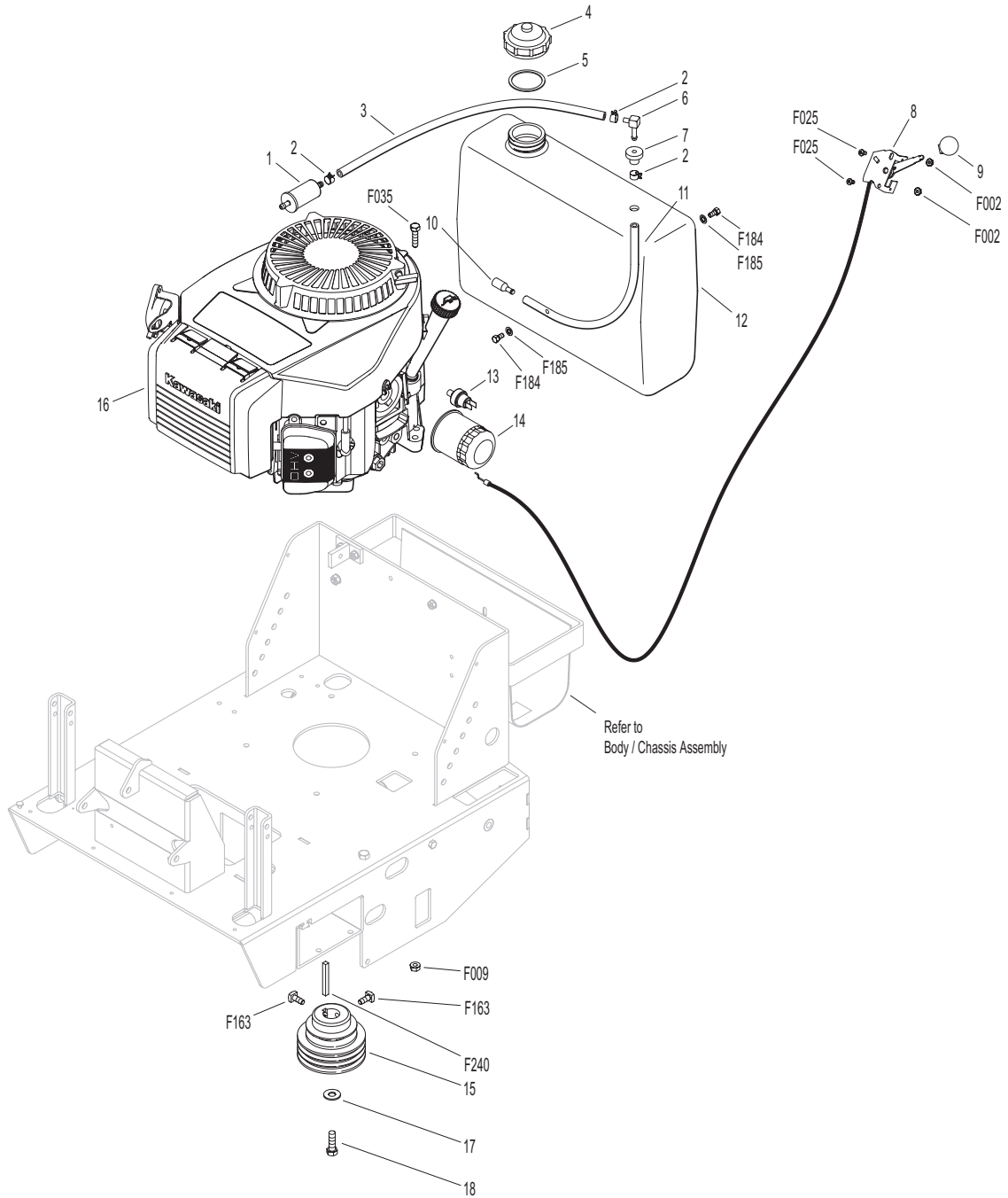
MAIN COMPONENT POWER TRANSMISSION



ENGINE GROUP

ITEM NO.	PART NO.	DESCRIPTION	NO. REQ'D	ITEM NO.	PART NO.	DESCRIPTION	NO. REQ'D
Engine Assembly				Fasteners			
1	5020	Fuel Filter	1	F002		10-24 Keps Nut	2
2	5879-3	Hose Clamp (1/2)	3	F009		5/16-18 Whiz Locknut	4
3	5086-18	Fuel Line	1	F025		10-24 x 3/8 PPHMS	2
4	5082	Fuel Tank Cap (Includes Item # 5)	1	F035		5/16-18 x 1-1/4 Hex Bolt	4
5	5082-2	Fuel Cap Seal	1	F163		5/16-18 x 3/4 SQH Set Screw	2
6	5083-2	Tank Tube Elbow	1	F184		1/4-20 x 1/2 Hex Bolt, SS	2
7	5083-1	Bushing, Rubber	1	F185		1/4 Internal Star Lock Washer	2
8	9121-10	Throttle Control & Cable	1	F240		1/4 x 1/4 x 2-1/4 Key	1
9	5108-5	Throttle Control Knob/Red	1				
10	5020-1	Fuel Filter, In Tank	1				
11	5086	Fuel Line (In Tank P/U)	1				
12	6046-2	Fuel Tank 3.0 Gal./Gas (Includes Items # 4 & 5)	1				
13	9011	Oil Pressure Switch	1				
14	NS	Oil Filter (Kawasaki 49065-2078)	1				
15	9237	Engine Pulley (4/3V, 3A) (Includes Items # F163 & F240)	1				
16	NS	15 HP Kawasaki Engine (FH430VAS14)	1				
17	NS	Washer (Kawasaki 92002-1982)	1				
18	NS	Bolt (Kawasaki 92151-7010)	1				

ENGINE GROUP



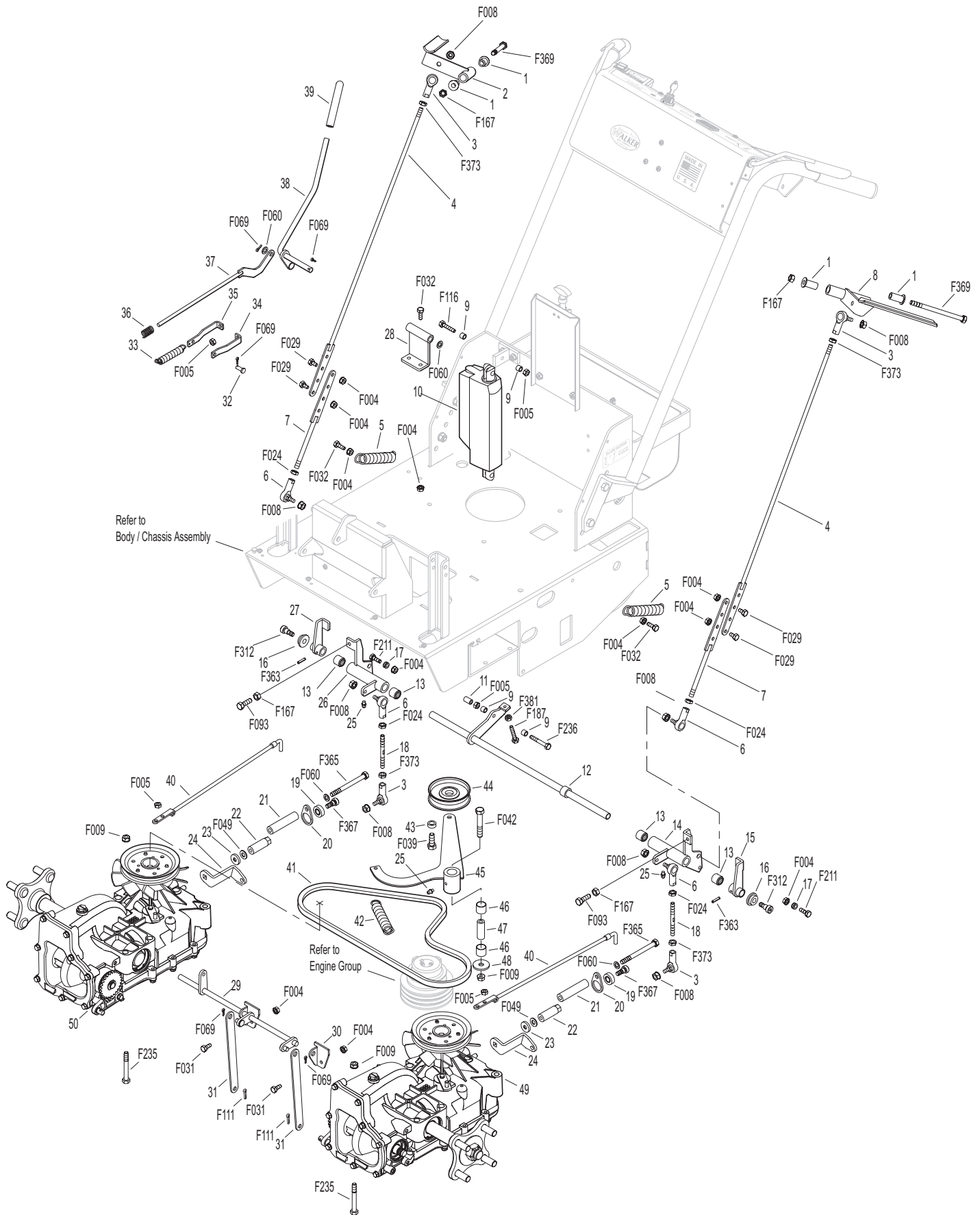
FORWARD SPEED & STEERING CONTROLS

ITEM NO.	PART NO.	DESCRIPTION	NO. REQ'D	ITEM NO.	PART NO.	DESCRIPTION	NO. REQ'D
Steering Lever Assembly				Ground Drive Assemblies			
1	5103-2	Pivot Bushing (5/16 ID)	4	40	9027	Lockout Rod	2
2	9701	Control Handle, LH	1	41	9248	Ground Drive Belt	1
3	5214-3	Ball Joint (5/16-24LH) (Nylon Lined)	4	42	5221	Extension Spring (3/4 x 4)	1
4	9703-2	Linkage Rod, Upper Lever (LH Threaded)	2	43	9349-1	Pulley Spacer, Belt Tightener	1
5	9706-1	Extension Spring (3/4 x 4)	2	44	5245	Idler Pulley (3")	1
6	5214-2	Ball Joint (5/16-24) (Nylon Lined)	4	45	9349	Hydro Belt Tightener Arm (Includes Items # 25, 46 & 47)	1
7	9703-1	Linkage Rod, Lower Lever	2	46	7201-3	DU Bearing	2
8	9702	Control Handle, RH	1	47	7201-4	Inner Race (1-1/2)	1
FSC Linkage & Steering Linkage Assembly				48	5841	(3/8 x 1-1/4) Retainer Washer	1
9	9622	Plastic Bushing, Actuator	4	49	9025	Hydro-Gear, LH	1
10	9621	FSC Actuator	1	50	9026	Hydro-Gear, RH	1
11	9623	Switch Bushing, Actuator	1	Fasteners			
12	9704	Steering Pivot Rod	1	F004	1/4-20 Keps Nut		12
13	9705-2	Bearing, Speed Actuator	4	F005	1/4-20 ESNA Nut		5
14	9706	Speed Control Actuator, RH (Includes Items # 13 & 25)	1	F008	5/16-24 Keps Nut		8
15	9704-2	Speed Control Stop, RH	1	F009	5/16-18 Whiz Locknut		3
16	9704-3	Pivot Rod Bushing, Plastic	2	F024	5/16-24 Jam Nut		4
17	9705-1	Spring Bushing (1/4 x 1/8)	2	F029	1/4-20 x 1/2 Hex Bolt		4
18	9708-1	Control Arm Rod, LH Thread	2	F031	1/4-20 x 5/8 Hex Bolt		2
19	5551-1	Pivot Bearing (#S3PP)	2	F032	1/4-20 x 3/4 Hex Bolt		4
20	9707-3	Bearing Housing, Control Arm	2	F039	3/8-16 x 1-1/4 Hex Bolt		1
21	9707-2	Spacer Tube, Control Arm	2	F042	3/8-16 x 2-1/4 Hex Bolt		1
22	9707-1	Extension Nut, Hydrogear	2	F049	5/16 SAE Washer		2
23	9024	1/8 x 7/8 Washer	2	F060	AN960516 Washer		4
24	9707	Control Arm, Hydro-gear	2	F069	3/32 x 1/2 Cotter Pin		5
25	5830	Grease Fitting	3	F093	5/16-18 x 1 Hex Bolt		2
26	9705	Speed Control Actuator, LH (Includes Items 13 & 25)	1	F111	1/8 x 3/4 Cotter Pin		2
27	9704-1	Speed Control Stop, LH	1	F116	1/4-20 x 1-1/4 Hex Bolt		1
Brake Assembly				F167	5/16-18 Hex Nut		4
28	9406-1	Park Brake Lever Mount	1	F187	1/4-20 x 1-1/2 Hex Bolt		1
29	9407	Park Brake Actuator Rod	1	F211	1/4-20 x 7/8 Hex Bolt		2
30	9407-2	Brake Actuator Rod Mount	2	F235	5/16-18 x 2-1/2 Hex Bolt		2
31	9407-1	Park Brake Actuator Link	2	F236	1/4-20 x 1-3/4 Hex Bolt		1
32	7523-2	Clevis Pin (1/4 x 5/8)	1	F312	3/8 x 3/8 Shoulder Bolt		2
33	5225	Extension Spring (1/2 x 2-1/4)	1	F363	5/32 x 3/4 Roll Pin		2
34	9406-4	Clevis Half	1	F365	5/16-24 x 3-1/2 Hex Bolt		2
35	9406-3	Clevis Half, Spring Side	1	F367	3/8 x 1/2 Shoulder Bolt		2
36	5665	Compression Spring (1/2 x 1)	1	F369	5/16-18 x 4-1/2 Hex Bolt		2
37	9406-2	Brake Actuator Pull	1	F373	5/16-24 LH Hex Nut		4
38	9406	Park Brake Lever (Includes Item # 39)	1	F381	1/4-20 Hex Nut		1
39	7406-1	Handle Grip, Red	1				

Use only genuine **Walker**[®] replacement parts.

Effective Date 11-01-03

FORWARD SPEED & STEERING CONTROLS



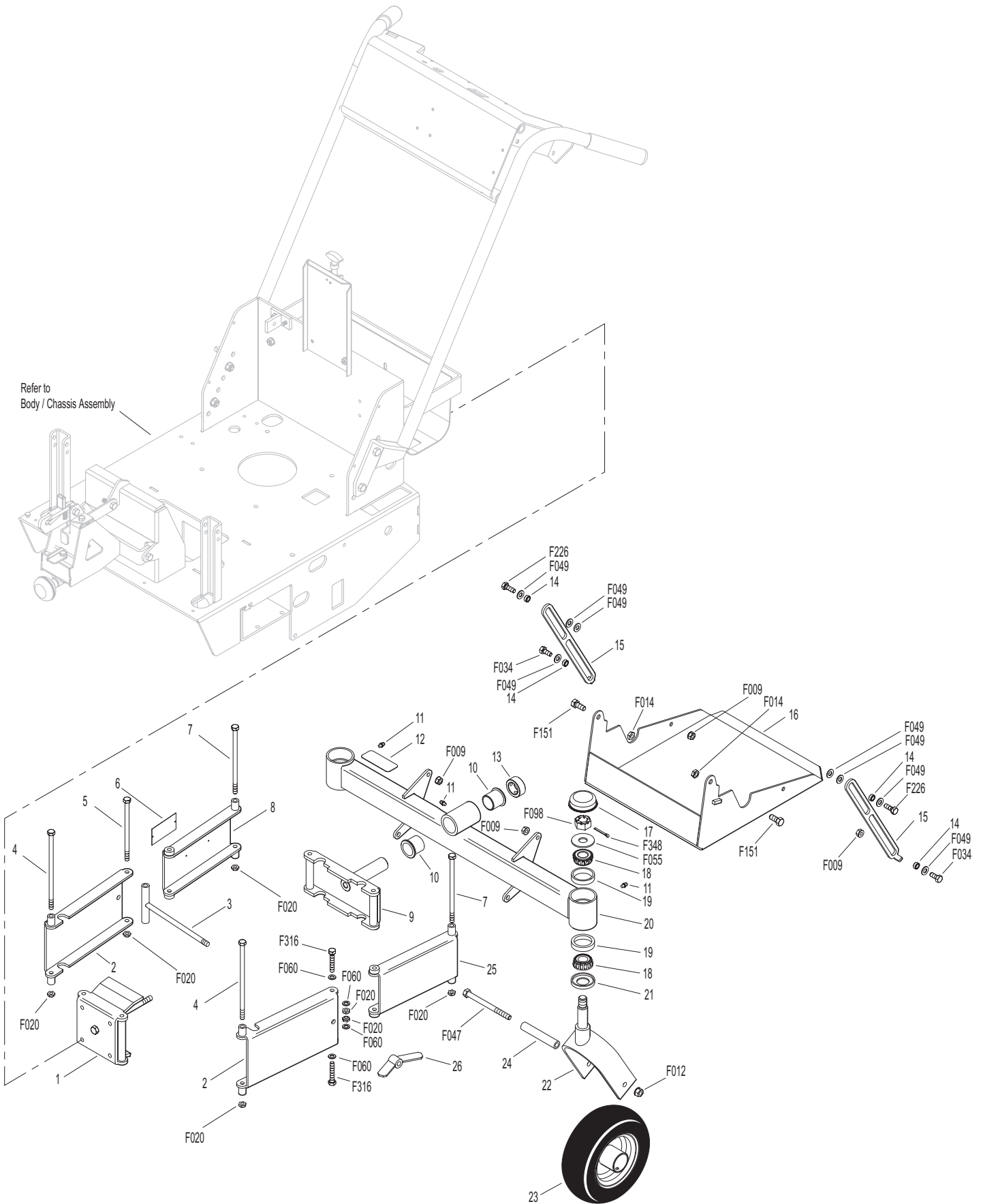
Effective Date 11-01-03

Use only genuine Walker® replacement parts.

SULKY ATTACHMENT

ITEM NO.	PART NO.	DESCRIPTION	NO. REQ'D	ITEM NO.	PART NO.	DESCRIPTION	NO. REQ'D
Sulky Attachment				Fasteners			
1	9504	Front Arm Mount, Sulky	1	F009	5/16-18 Whiz Locknut		4
2	9506	Front Arm, Sulky	2	F012	3/8-16 Keps Nut		2
3	9509	T-Bolt, Arm Lock	1	F014	3/8-16 ESNA Nut		2
4	9510	Front Pivot 5/16-18 x 6-5/8	2	F020	5/16-18 ESNA Nut		7
5	9511	Center Pivot 5/16-18 x 5-1/4	1	F034	5/16-18 x 3/4 Hex Bolt		2
6	NS	Serial Number Plate	1	F047	3/8-16 x 4-1/2 Hex Bolt		2
7	9512	Rear Pivot 5/16-18 x 5-5/8	2	F049	5/16 SAE Washer		8
8	9507-1	Rear Arm/RH, Sulky	1	F055	5/8 SAE Washer		2
9	9505	Rear Arm Mount, Sulky	1	F060	AN960516 Washer		4
10	5683	Pivot Bearing	2	F098	5/8-18 Slotted Hex Nut		2
11	5830	Grease Fitting	3	F151	3/8-16 x 7/8 Hex Bolt		2
12	9503-1	Decal, Max Load Warning	1	F226	5/16-18 x 7/8 Hex Bolt		2
13	5267-1	Retainer Collar (1")	1	F316	5/16-18 x 1-3/4 Hex Bolt		2
14	9502-1	Support Arm Bushing	4	F348	1/8 x 1-1/2 Cotter Pin		2
15	9502	Support Arm, Foot Tray	2				
16	9501	Foot Tray, Sulky	1				
17	8769-9	Dust Cap Deck Caster	2				
18	8037	Bearing Cone (3/4 ID)	4				
19	8769-1	Bearing Cup, Caster Fork	4				
20	9503	Fork Mount Tube (Includes Items # 10, 11 & 12)	1				
21	8768-1	Seal	2				
22	5770-1	Caster Wheel Fork	2				
23	5715-4	Caster Wheel Assembly Pneu. (8 x 3.00-4)	2				
24	5714-3	Axle Spacer Tube	2				
25	9507	Rear Arm/LH, Sulky	1				
26	9508	Wing Nut	1				

SULKY ATTACHMENT



Effective Date 11-01-03

Use only genuine Walker® replacement parts.

ELECTRICAL ASSEMBLY

ITEM NO.	PART NO.	DESCRIPTION	NO. REQ'D	ITEM NO.	PART NO.	DESCRIPTION	NO. REQ'D
Electrical Assembly				Fasteners			
1	5975-3	Cable Tie (50# x 7")	4		F002	10-24 Keps Nut	7
2	9940	Wire Harness	1		F025	10-24 x 3/8 PPHMS	2
3	9941-2	FSC Thumb Guard	1		F026	10-24 x 1/2 PPHMS	5
4	9941-1	FSC Switch	1		F349	Washer .835 ID 1.122 OD, SS	1
5	7941-2	Circuit Breaker (10 Amp)	1				
6	7941-3	Boot, Circuit Breaker	1	*		Service Part Only	
7	8960-15	Ignition Switch (with Keys) (Includes Items # 9, 10 & F349)	1				
8	8990-1	Hourmeter (SenDec)	1				
9	8960-2	Ignition Key (1 Set)	*				
10	7854	Plastic Tip, Red	1				
11	9942	Safety Switch, Operator	1				
12	9943	PTO Safety Switch	1				
13	9944	Safety Switch, Neutral	1				
14	7203-6	Riser Plate, Seat Switch	1				
15	9910	Battery (12V/5 Amp SLA)	1				
16	5832	Cable Clamp (1/2)	1				

