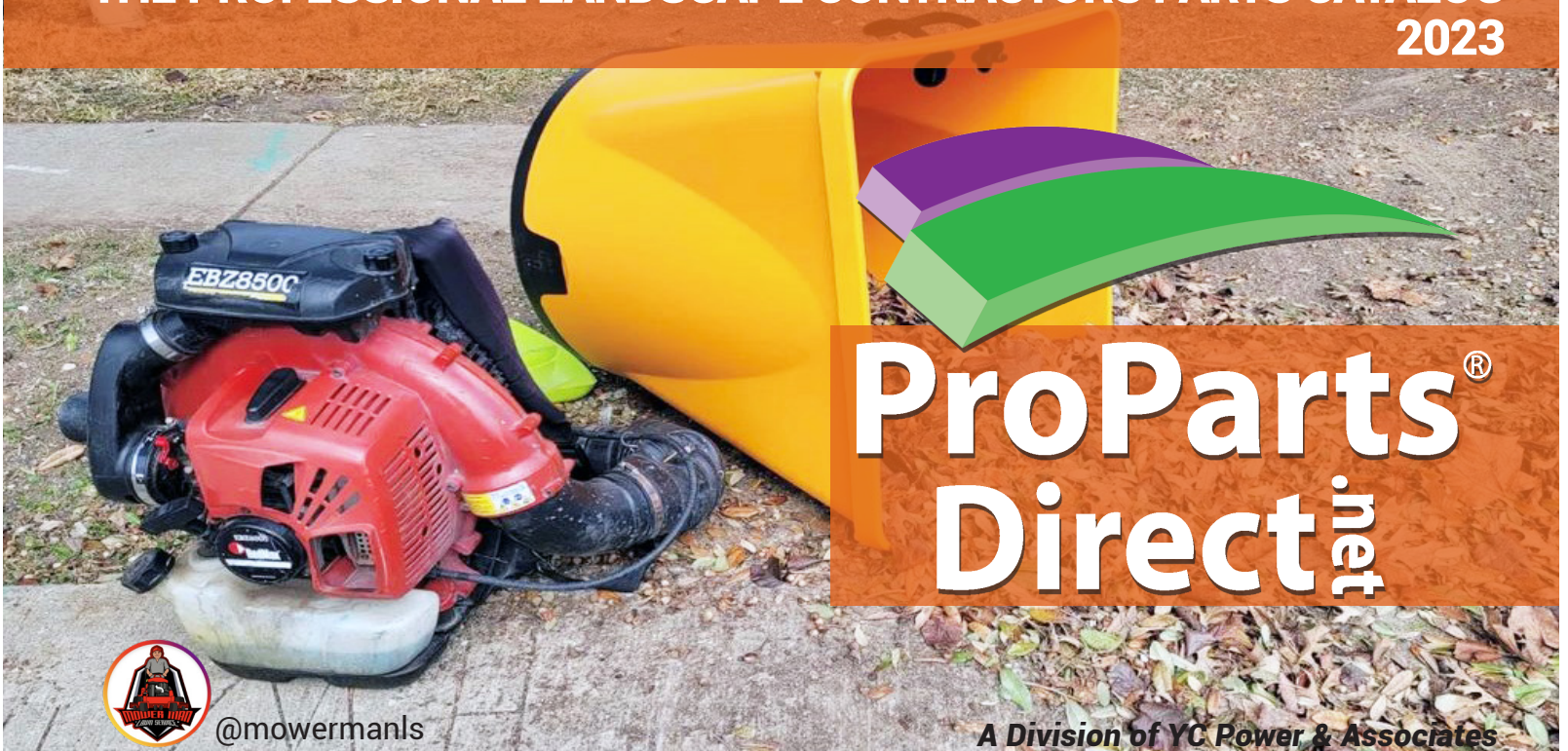


THE PROFESSIONAL LANDSCAPE CONTRACTORS PARTS CATALOG 2023



ProParts[®] Direct_{net}



@mowerman1s

A Division of YC Power & Associates

(800) 305 9255 | WWW.PROPARTSDIRECT.NET

2 CYCLE OIL

See Page 3 for all of our Oil deals!

TRUCK LOADER HOSE

Page 9

Hose for all Brands.
Starting at \$79.95

AERATOR PARTS

Page 7

Parts For Exmark, Toro & Billy Goat

Leaf Plows

The heavy-duty JRCO Leaf Blade Plow uses the mower's power to quickly move piles of leaves. It virtually eliminates "tarping" and moves windrowed leaves for collection. The one-piece. Does not include Mount bar.

Jrco
Heavy-duty Attachments
for Commercial Mowers

Order Number 480
Price \$649.95



PARTS INSTOCK FOR HURRICANE, WINDSTORM & BILLY GOAT BLOWERS



Your One-Stop-Shop for Toro Dingo, Exmark, Scag, Wright, Walker & Z-Spray Parts!

THE RIGHT PART, THE RIGHT PRICE..... EVERY TIME.

Kineticix

HIGH PERFORMANCE OILS

Zn

Our Zn™ additive activates as engine temperatures rise creating a chemical barrier that guards critical metal engine components from the wear caused by high pressure, heat, and friction.



SAE 30 Oil	Single Price	Case of 12
80003 - Quart	\$6.95	(\$5.89 ea.) \$70.68
80022 - 5 Gallon Pail	\$129.95	
5W-30 Oil		
80014 - Quart	\$6.95	(\$5.89 ea.) \$70.68
80020 - 5 Gallon Pail	\$129.95	
80025 - 55 Gal Drum	\$1399.95	
10W-30 OIL		
80001 - Quart	\$6.95	(\$5.89 ea.) \$70.68
80021 - 5 Gallon Pail	\$129.95	
10W-40 Oil		
80017 - Quart	\$6.95	(\$5.89 ea.) \$70.68
80033 - 55 Gal Drum	\$1399.95	
15W-40 Oil		
80005 - Quart	\$7.95	(\$6.29 ea.) \$75.48
80028 - 5 Gallon	\$149.95	
20W-50 Oil		
80007 - Quart	\$7.95	(\$6.49 ea.) \$77.88
80032 - 55 Gal Drum	\$1499.95	



Bar Oil
 Order Number: 80009
 TAKFLO Additive for supreme tack
 Red Colored Oil
 1 qt. Bottle
Sale Price:
 12 or more:

\$4.49 ea.
\$3.69 ea.



Bar Oil
 Order Number: 80010
 TAKFLO Additive for supreme tack
 Red Colored Oil
 1 Gallon bottle
Sale Price:
 12 or more:

\$14.89 ea.
\$12.95 ea.



Bar Oil
 Order Number: 80023
 5 Gallon Pail of Bar Oil
Sale Price:
\$69.95 ea.



Order Online www.propartsdirect.net | Original & Aftermarket Parts

Kawasaki K-Tech Oil

Semi-synthetic, 50: 1 oil. Premium 2 Cycle Oil exceeds the rigorous requirements of API TC, JASO FD and ISO EGD classifications for 2-cycle air-cooled small engine applications. Reduced lacquer and varnish build up. Rust and corrosion inhibitors, Low Smoke Formula

Order Number	Description	Price Each	Quantity Discount
99969 6082C	48 Bottles, 1 Gallon Mix	\$2.39	48 or more \$1.98 ea
99969 6084C	48 Bottles, 2.5 Gallon Mix	\$3.29	48 or more \$2.49 ea
99969 6085C	24 Bottles, 5 Gallon Mix	\$5.09	24 or more \$4.69 ea
99969 6086D	1 Gallon Jug - 3 Per Case	\$49.95	3 or more \$45.95 ea
99969 6157C	5 Gallon Pail	\$199.95	



@mowerman1s

ECHO® Power Blend Gold Oil

50: 1 oil. Premium 2 Cycle Oil. Meets or exceeds ISO-L-EGD- and JASO M345/FC standards. The oil includes a fuel stabilizer to maintain fuel's quality. Use to minimize exhaust-port blockage, protect engine components and keep fuel burning clean

Order Number	Description	Price Each	Price Per Case
6450001	48 Bottles, 1 Gallon Mix	\$1.99	(\$1.77 ea) \$84.96
6450025	48 Bottles, 2.5 Gallon Mix	\$2.73	(\$2.54 ea) \$121.92
6450005	12 Bottles, 5 Gallon Mix	\$5.29	(\$3.90 ea) \$58.92
6450050	1 Gallon / 4 Per Case	\$43.95	
6450250	5 Gallon Pail	\$195.00	



Kinetix Zinc Oil

Synthetic 2-Cycle Oil

Fully Synthetic with Fuel Stabilizer. Meets/Exceeds JASO FD, ISO-L-EGD & API-TC Classifications

Order Number	Description	Price Each	Price Per Case
80012	48 Bottles, 1 Gallon Mix	\$2.39	(\$1.98 ea) \$95.04
80013	24 Bottles, 2.5 Gallon Mix	\$3.49	(\$2.99 ea) \$71.96
80011	24 Bottles, 5 Gallon Mix	\$5.95	(\$4.59 ea) \$110.16

Kinetix

NEW



Redmax MaxLife 2 Cycle Oil

RedMax Synthetic Blend 2 Stroke Engine Oil was engineered to actively combat the negative aspects of ethanol blended fuel. Its fuel stabilizer additives offer protection against fuel oxidation (gum formation, sour gas) and system corrosion.

Order Number	Description	Price Each	Price Per Case
598817701	48 Bottles, 1 Gallon Mix	\$2.39	(\$2.09 ea) \$100.32
598817703	48 Bottles, 2.5 Gallon Mix	\$3.31	(\$3.09 ea) \$148.32
598817704	12 Bottles, 5 Gallon Mix	\$6.59	(\$6.19 ea) \$74.28
598817705	1 Gallon Jug (4 per case)	\$52.50	



OIL MEASURING CUP



4 Fl. oz Capacity
Order Number:
6450009
Price: \$1.69

OIL PAIL DISPENSING PUMP

Free
With a
5 Gallon
Pail



For 5 gal. pail
Order Number:
99909-0010
Price: \$34.89

For Use with Echo Oil Only

Call 800 305 9255 | Original & Aftermarket Parts



Tine Rake Dethatcher

Universal Tine rake will fit all most all commercial mowers. The rake quickly attaches to the machines using a universal mount bar. The dethatcher can be used all year long! Includes mount bar

Deck Size	Size	Shipping Weight	# Of Tines	Price
Compact	36"	75 lbs	27	\$899.00
40, 46, 48, 50, 52, 54	46"	83 lbs	35	\$899.00
60, 66, 72	60"	93 lbs	47	\$949.00

When ordering rake dethatcher, you will need to supply the following Information: * Manufacturer of Mower * mower # serial number * Deck Size * Type of deck * bagging system or not



Tune-Up Kits

Order Number	Description	Price
1148	Leaf Plow Tune Up Kit - Includes Left & right Tine Set, 2 skid wheels, 4 oil-lite flange bushings, 2 clevis pins & circle cotters	\$136.00
1136	Tine Rake Tune Up Kit - 36" Includes 27 Double Loop Tines, 4 oil-lite flange bushings, 6 Clevis Pins and circle cotters	\$89.95
1146	Tine Rake Tune Up Kit - 46" Includes 35 Double Loop Tines, 4 oil-lite flange bushings, 6 Clevis Pins and circle cotters	\$112.00
1160	Tine Rake Tune Up Kit - 60" Includes 47 Double Loop Tines, 4 oil-lite flange bushings, 6 Clevis Pins and circle cotters	\$145.00



Order Number	Description	Price Each	24 or More
4624DD	Replacement Double Loop Tines	\$2.95	\$2.49

Dual Wheel Velke

Dual Wheel Velke's give more stability than a single wheel and leave a nice track behind any walk behind mower. Operator Capacity = 250 lbs. Only in black

Order Number: VKX2
Price . . \$489.99 ea.



Steel Grass Catchers Heavy-Duty Metal Great Handle Design

Order Number	Description	Price
Exmark (Bracket Included)		
UNI4300	4.3 cu ft, Fits Exmark, Early Bobcat, Kees Encore	\$359.99
UNI5800	5.8 cu ft, Fits Exmark, Early Bobcat, Kees Encore	\$459.99
Gravelly		
GRA4300	4.3 cu, ft	\$359.99
GRA5800	5.8 cu ft,	\$459.99
GRA5800-15	5.8 cu ft, Pro-Turn, Pro-Stance Mower	\$459.99
Ferris (Bracket Included)		
SCG4300	4.3 cu ft, Fits Ferris Mowers Decks	\$359.99
SCG5800	5.8 cu ft, Fits Ferris Mowers Decks	\$459.99
Scag (Bracket Included)		
SCG4300	4.3 cu ft, Fits Ferris Mowers & Scag Regular Decks	\$359.99
SCG5800	5.8 cu ft, Fits Ferris Mowers & Scag Regular Decks	\$459.99
SCGA4300	4.3 cu ft, Fits Scag Advantage Decks	\$359.99
SCGA5800	5.8 cu ft, Fits Scag Advantage Decks	\$459.99
SCGV4300	4.3 cu ft, Fits Scag Velocity Decks	\$359.99
SCGV5800	5.8 cu ft, Fits Scag Velocity Decks	\$459.99
Toro (No Bracket Needed)		
TOR4300	4.3 cu ft, Fits Toro Turbo Force Decks	\$359.99
TOR5800	5.8 cu ft, Fits Toro Turbo Force Decks	\$459.99
Wright (No Bracket Needed)		
WRI4300	4.3 cu ft, Fits Wright, Early Bobcat, Kees, Encore	\$359.99
WRI5800	5.8 cu ft, Fits Wright, Early Bobcat, Kees, Encore	\$459.99



ProSlide XT
The ProSlide offers great looking Professional lawn striping with the cost saving benefits of a velke wheel. Gas loaded spring folds slide up nicely.



ProSlide Wear Plate
Replacement Plastic Wear Plate for ProSlide.
Order Number 103038
Price . . . \$97.99

Order Number	Description	Price
102028	Gas Spring	\$36.29
103036	XT Torsion Spring Kit	\$15.99



Order Online www.propartsdirect.net | Original & Aftermarket Parts



Leaf Plows

The heavy-duty JRCO Leaf Blade Plow uses the mower's power to quickly move piles of leaves. It virtually eliminates "tarping" and moves windrowed leaves for collection. The one-piece. Does not include Mount bar.



Stainless steel spring tines allow the plow to push leaves on even surfaces.

55 inch wide galvanized steel blade has supports at the top, center and bottom for durability

Order Number
480
Price
\$649.95

Jrco
Heavy-duty Attachments
for Commercial Mowers



Mount Bar Package

Required for all Front mount attachments
One mount bar need per mower model
Includes all hardware and brackets

Price \$227.00 Call or go online for proper mount bar for your machine.

Blower Buggy Carrier

Designed to hold walk-behind blowers on the front of zero-turn and riding mowers.
Moves yard debris with speed and ease.
Buggy adjusts to fit most blowers.
One person can quickly unload and load
Quickly attaches to Jrco mount bar with 2 pins
Jrco mount package sold separately.

Order Number
601
Price
\$849.95

BLOW DEBRIS WITH SPEED & EASE

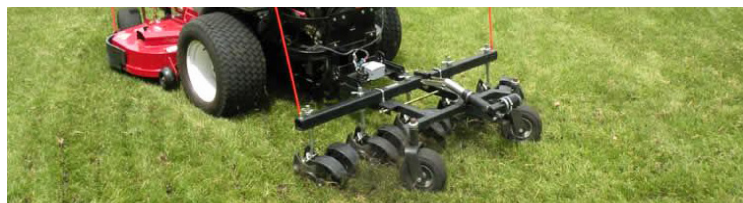


Order Number
751
Price
\$2899.95

Hooker Aerator

38" Wide Aerator, six tine rotors, front-mount
Aerate 66,000 sq ft per hour at 5 mph.
Punctures up to six holes per sq ft.
Holes approximately 1/2" wide x 1-1/4" long and up to 3" deep.
Casters swivel allowing turning while aerating
Six floating rotor heads independently to lift over tree roots and rocks while the other heads continue to aerate.
Electric actuator lifts the heads for transport.
Jrco mount bar sold separately.

Order Number	Description	Price
15W	Deckless Aerator Mount for Walker Mower	\$433.00

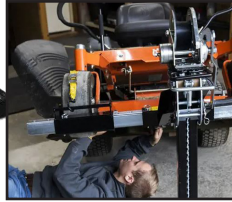


Hooker Tow-Behind Aerator

38" Wide Aerator, six tine rotors, front-mount
Aerate 66,000 sq ft per hour at 5 mph.
60" Wide aerates 105,000/hr at 5 mph.
Punctures up to six holes per sq ft.
Holes approximately 1/2" wide x 1-1/4" long and up to 3" deep.
Six floating rotor heads independently to lift over tree roots and rocks while the other heads continue to aerate.
Electric actuator lifts the heads for transport.
Jrco mount bar sold separately.

Order Number	Description	Price
753	38" Tow-Behind Aerator, Includes Hitch	\$2999.00
755	60" Tow-Behind Aerator, Includes Hitch	\$4814.00

Jacks & Ramps



MoJack PRO Mower Lift

The MoJack PRO Mower Lift is designed to be smarter and work harder. Make working on your lawn tractor safe and easy. This lift is ideal for blade sharpening, belt replacement, debris removal, and lawn mower maintenance. Safer and more convenient than makeshift mower jacks, car ramps or concrete blocks, it features a self-braking winch and ratcheting safety-lock to prevent the machine from slipping or becoming unstable while performing maintenance. The winch makes lifting quick and easy, even if it's used several times a day.

- Lifting capacity: 750 lbs (lifting front end only, not total weight of mower)
- Lifting Height: 25"
- Fits any lawn tractor or ZTR riding mower on the market
- Wheel Span Measurement: 31.5" – 62.5" outside front wheel measurement
- Easily lifted with one hand or a power drill
- Folds flat for easy, compact storage

Order Number: MJPRO

SALE PRICE: \$629.95



MoJack EZ MAX

- Lifting Capacity: 450 lbs (lifting the front of the mower, not the total mower weight)
- Lifting Height: 24"
- Fits most residential tractor and ZTR mowers
- Easily lift manually or with a powered drill
- Folds flat for easy storage
- Wheel Span Measurement: 18.5" – 47.5" (inside to outside front tires)

Order Number: 45001-EXMAX

SALE PRICE: \$339.99



MoJack Work Bench Attachment

The MoJack Workbench Attachment smartly converts your MoJack lawn mower lift into a sturdy worktable for push mowers and other small projects. The MoJack Workbench Attachment is engineered to put everything at a comfortable working height. The MoJack Workbench Attachment is compatible with MoJack EZ, MoJack EZ MAX, MoJack XT, MoJack XT 750, and MoJack PRO lifts.

Order Number: MJWORKBENCH

SALE PRICE: \$149.99

ULTRA-TOW™

CARGO RAMPS

Ideal for Loading ATV's, Mowers and Landscaping equipment. Folding design is light weight & high strength.

41197



53181



53187



41156



Ultra-Tow Cargo Carrier



- Durable aluminum construction is lightweight and rust & corrosion-resistant
- 500-lb. capacity (equally distributed) allows you to haul large loads
- 8in. high side rails contain cargo
- Hitch mount design is compatible with cars, trucks, vans and SUVs with a 2in. dia. receiver hitch
- Rear safety reflector provides increased night visibility for added safety

Order Number: 28679.ULT

SALE PRICE: \$159.99

Order Number	Capacity	Material	Folding	Length	Weight	Price
41197.ULT	500 lbs	Aluminum	Tri-Fold	77 in	29 lbs	\$249.95
53181.ULT	750 lbs	Aluminum	Half Fold	90 in	31 lbs	\$235.00
53187.ULT	1,500 lbs	Aluminum	Half Fold	96 in	62 lbs	\$399.95
41156.ULT	500 lbs	Steel Gal Finish	Tri-Fold	72 in	47 lbs	\$169.95



Order Online www.propartsdirect.net | Original & Aftermarket Parts

Aerator Parts



PL1800H-V

Order Number	Description	Price Each
G382244-S	TINE (Uses 4) 5/8	\$32.34



PL2500H/SPH

Order Number	Description	Price Each
G382244-S	TINE (Uses 8) 5/8	\$32.34



AE1300H/AE401-V

Order Number	Description	Price Each
G360100	TINE (Uses 8)	\$12.29



CR POWER RAKES

Order Number	Description	Price Each
G350251-S	Flail Blade Kit Set of 30	\$100.40
G350187	Slicing Blade Kit Set of 20	\$157.90



PR POWER RAKES

Order Number	Description	Price Each
G350356-S	Spring Tine Kit	\$178.20
G350187	Slicing Blade Kit Set of 20	\$157.90
G350347	Slicing Blade Kit Set of 10	\$139.95
G350186	Flail Blade Kit Set of 30	\$139.95



18" Walk-behind Aerator

Order Number	Description	Price Each
126-2143	TINE Uses 24	\$9.99
121-1869	Flail Blade Uses 32	\$4.78

Dual-Purpose Pintle Hitch



The Ultra-Tow® 6-Ton Dual-Purpose Pintle Hitch can be used with a tow ring or ball coupler. U.S.A.

Order Number: 23261.ULT
SALE PRICE: \$125.00



Hooker Aerator

Order Number	Description	Price Each
7860-1	TINE Gen2 (Uses 6)	\$41.50
7860-2	Tine Gen 3	\$42.35
7860	Tine Gen 4	\$37.00



30" Stand-On Aerator

Order Number	Description	Price Each
126-2143	TINE (Uses 24)	\$9.99

Re-Usable Ear Plugs

Quattro EP-401 Reusable Ear Plugs. Conforms with CE standards and can be used in the EU. These reusable ear plugs are ideal for use with outdoor power equipment and have a noise reduction rating of 27 decibels. The range of noise reduction ratings of existing hearing protectors are approximately 0 to 30. (higher numbers denote greater effectiveness).

Box of 100



Order Number 16190
Price \$129.95

Call 800 305 9255 | Original & Aftermarket Parts

PARTS FOR BILLY GOAT, SCAG, GIANT-VAC, LITTLE WONDER TRUCKLOADERS

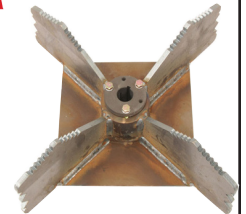
@nickens.lawn.and.landscape.llc



LITTLE WONDER®

Fan fits Little Wonder / Monster 29HP Truck Loaders.

Order Number MP020025
PRICE \$1,120.44



SCAG GIANT-VAC®

Fan fits Skid Mount and Tow Behind TLS20W models. Requires hub.

Order Number 452454
PRICE \$523.33

Hub - Order Number 484820



Fan fits 12HP & 13 HP Billy Goat Truck loaders. Models TR1204L and TR1304H.

Order Number G810974
PRICE \$388.08



Order Number	Impellar Fans - Model Fitment	Price
G810629	TR1104	\$229.32
G810974	TR1204L / TR1304H	\$388.08
G810930	HTR1803V / 1803VEU	\$345.24
G812257-S	DL1201 / DL1301H	\$363.93
G810930	DL1401SE/ DL1801VE	\$345.24
G791120-S	DL1800V / DL2500S	\$727.65
G792601	DL3500V	\$791.07

Order Number	Impellar Fans - Model Fitment	Price
452454	TLS20-18BV, TLH20-18BV	\$523.33
452455	TLS20-29BV, TL20W-26EFI	\$485.11
452445	TLB25-35BV, TLB25-37CH, TLB25-48KBD	\$829.82
Hub		
484819	TLS20-18BV, TLH20-18BV	\$104.21
484820	TL20W-29BV, TL20W-26EFI	\$171.39
Impellar Bolt & Keyway Kit		
462592	TLS20-18BV, TLH20-18BV, TL20W-29BV, TL20W-26EFI	\$48.65
Impellar Carriage Screw		
04015-22	TLS20-18BV, TLH20-18BV, TL20W-29BV, TL20W-26EFI	\$3.32

Order Number	Impellar Fans - Model Fitment	Price
MP020028	8183-04-01, 8185-04-01	\$885.47
MP020025	8293-04-01, 8295-04-01	\$1120.44
LW4168402	8160-00-01, 8180-00-01	\$667.68
LW4167583	8161-00-01, 8181-00-01	\$684.00
LW4168330	8272-00-01 (Includes Talon)	\$1168.80

REPLACEMENT PARTS

Order Number	Description	Price
790167	DL1201/DL1301H Impeller screw	\$3.15
8177012	DL1201/DL1301H Washer	\$0.63
9201125	DL1201/DL1301H KeyWay	\$1.68
812283	DL1401SE/ DL1801VE Debris Reducer	\$60.69
9201125	DL1401SE/ DL1801VE Keyway	\$1.68
9201125	DL1800/ DL2500S Keyway	\$1.68
812221	DL1201L / DL1301 Insert Liner	\$147.80
812214	DL1401 Insert Liner	\$128.52
G812391-S	DL1800V / DL2500 Insert Liner	\$163.38

REPLACEMENT PARTS

Order Number	Description	Price
Long Wear Liner		
426310	TLS20-18BV, TLH20-18BV	\$66.53
Short Wear Liner		
426311	TLS20-18BV, TLH20-18BV	\$92.02
Wear Liner Kit		
462583	TLS20W-29BV, TLS20W-26EFI	\$269.41
Hose, Metal Galv. Interlock 8" Dia. x 60"		
484939-03	TL20W-29BV, TL20W-26EFI	\$178.38

Call Us for Help on Truck Loader Parts
800 305 9255

INQUIRE ABOUT PROSHIP

Pro-Ship is the best way to save money on shipping. Do you place orders frequently to replenish stock or need to keep inventory low but get parts quickly at a low cost to you? ProShip is designed for anybody who needs to cut down costs but order all of the time
PACKAGES START AT \$59.99



Order Online www.propartsdirect.net | Original & Aftermarket Parts

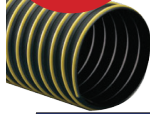


COMMERCIAL GRADE TRUCK LOADER HOSE

OUR HOSE WILL FITS THESE MAJOR BRANDS...AND MORE!



Our Most Common Intake Hose



Flexadux T-7W Truck Hose

Medium weight black thermoplastic rubber hose reinforced with a spring steel wire helix & yellow external polypropylene wearstrip.

Order Number	Inside Diameter	Length	Price Per
8901050000	5.00"	5" x 10'	\$79.99
8901060000	6.00"	6" x 10'	\$89.95
8901070000	7.00"	7" x 10'	\$99.95
8901080000	8.00"	8 x 10'	\$119.95
8901100000	10.00"	10" x 10'	\$169.95
8901120000	12.00"	12" x 10'	\$189.95

affirm
BUY NOW & PAY LATER

PROPARTS DIRECT GIVES YOU THE OPTION TO BUY THE PARTS YOU NEED NOW AND PAY OVER TIME WITH AFFIRM. CHOOSE AFFIRM AT CHECKOUT TO APPLY FOR FIXED MONTHLY PAYMENT OPTIONS THAT FIT ANY BUDGET.

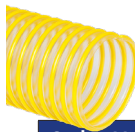
*SUBJECT TO ELIGIBILITY. PAYMENT OPTIONS THROUGH AFFIRM ARE PROVIDED BY THESE LENDING PARTNERS: AFFIRM.COM/LENDERS.



Flex-Tube PV

Medium weight clear co-extruded PVC hose with a rigid black external PVC helix.

Order Number	Inside Diameter	Length	Price Per
3504040012	4.00"	4" x 12'	\$79.95
3504060012	6.00"	6" x 12'	\$119.95
3504060025	6.00"	6" x 25'	\$239.95
3504070012	7.00"	7" x 12'	\$149.95
3504070025	7.00"	7" x 25'	\$289.95
3504080012	8.00"	8" x 12'	\$179.95
3504080025	8.00"	8" x 25'	\$372.50
3504100012	10.00"	10" x 12'	\$224.89
3504100025	10.00"	10" x 25'	\$466.79
3504120012	12.00"	12" x 12'	\$279.95



Bark Mulch Hose - Flex Tube PU

Medium weight clear co-extruded thermoplastic ether based polyurethane hose with a rigid yellow external ABS helix.

Order Number	Inner Diameter	Length	Price Per
3493040025	4.00"	4" x 25'	\$309.95
3493040050	4.00"	4" x 50'	\$539.30
3493040100	4.00"	4" x 100'	\$1,074.69
3493060006	6.00"	6" x 6ft	\$95.98
3493060012	6.00"	6" x 12 ft	\$191.49
3493080012	8.00"	12 ft	\$289.95
3493100012	10.00"	12 ft	\$339.00
3493120012	12.00"	12 ft	\$389.95



Flexadux LCDC

Medium weight high performance black polypropylene blend hose reinforced with a spring steel wire helix & orange external polypropylene wearstrip.

Order Number	Inner Diameter	Length	Price Per
8871060010	6.00"	10 ft	\$74.95
8871070010	7.00"	10 ft	\$89.95
8871080010	8.00"	10 ft	\$99.95
8871100010	10.00"	10 ft	\$159.95
8871120010	12.00"	10 ft	\$169.95



Flex-Thane HD

Heavy weight clear polyurethane hose reinforced with a bronze coated spring steel wire helix, Polyurethane Material.

Order Number	Inner Diameter	Length	Price Per
8391120010	12.00"	10 ft	\$408.95
8391140010	14.00"	10ft	\$504.78
8391160010	16.00"	10 ft	\$632.00
8391180010	18.00"	10 ft	\$730.00

Bridge Clamps for Flex-Tube®, PV, PU			Order Number	Description	Price Per
Order Number	Description	Price Per	02200700FT	7" Clamp	\$16.89
02200400FT	4" Clamp	\$14.95	02200800FT	8" Clamp	\$17.75
02200500FT	5" Clamp	\$14.95	02201000FT	10" Clamp	\$20.59
02200600FT	6" Clamp	\$16.00	02201200FT	12" Clamp	\$22.79

T-7W Hose Bridge Clamps

Order Number	Description	Price Per
02200400CW	4" Clamp	\$14.95
02200500CW	5" Clamp	\$14.95
02200600CW	6" Clamp	\$16.00
02200700CW	7" Clamp	\$16.89
02200800CW	8" Clamp	\$17.75
02201000CW	10" Clamp	\$20.59
02201200CW	12" Clamp	\$22.79

Bridge Clamps are specially designed to fit between the coils on truck loader hose.

Call 800 305 9255 | Original & Aftermarket Parts



**NEW
ITEM
14 Gal.**

Gas Caddy

The Flo n' Go 6792 Duramax 14 gal. Gas Caddy is a safe, fast, and convenient way to refill gas-powered tools, lawn tractors, boat engines, generators, snowmobiles, ATVs, etc. The patented gas pump handle allows you to eliminate spillage and overfills by stopping and restarting the flow of gas. Stand the Duramax gas can vertically when refueling gas-powered engines. The fuel caddy has a flow rate of 2 gallons per minute in siphon mode (gravity flow).

- Durable polyethylene gas caddy is resistant to corrosion and dents
- Heavy-duty 6 in. wheels make the fuel caddy easy to transport
- Gas caddy includes a 10 ft. long fuel hose
- Bolt-on hanger for convenient fuel line storage
- Caddy dimensions: 16.2 L x 12.7 W x 33.8 H

Order Number: 6792
Price . . \$139.99

affirm
BUY NOW & PAY LATER

PROPARTS DIRECT GIVES YOU THE OPTION TO BUY THE PARTS YOU NEED NOW AND PAY OVER TIME WITH AFFIRM. CHOOSE AFFIRM AT CHECKOUT TO APPLY FOR FIXED MONTHLY PAYMENT OPTIONS THAT FIT ANY BUDGET.

*SUBJECT TO ELIGIBILITY. PAYMENT OPTIONS THROUGH AFFIRM ARE PROVIDED BY THESE LENDING PARTNERS: AFFIRM.COM/LENDERS.

NO-SPILL® gas can. The only spill-proof, DOT approved gas can!

1.25 Gallon No-Spill Can
1.25 Gal. Fuel Can

Order Number :
1415

Price . . \$18.49



5 Gallon No-Spill Diesel Can
5 Gal. Fuel Can
Handle on Rear

Order Number :
1457

Price . . \$34.95



5 Gallon No-Spill Kerosene Can
5 Gal. Fuel Can
Handle on Rear

Order Number :
1456

Price . . \$34.95



2.5 Gallon No-Spill Can
2.5 Gal. Fuel Can

Order Number :
1405

Price . . \$22.89



5 Gallon No-Spill Can
5 Gal. Fuel Can
Handle on Rear

Order Number :
1450

Price . . \$34.95



Replacement Gas Cap
Order Number:
6132

Price . . \$11.95



6" Flexible Spout
Order Number:
0206
Price . . \$4.59



Kinetix Spill Absorbent Shop Rolls
Contains 20 15" x 60" Sheets

Order Number: L71320PS
Sale Price: \$23.20

Engineered to rapidly absorb water, oil, gasoline and diesel fuels, coolants, solvents and all sorts of petroleum and water-based fluids, Kinetix® industrial-grade spill containment products effectively control liquid spills common in the garage, the shop and on the factory floor.



SRM ECHOMATIC Trimmer Head

A bump-to-advance feed line system designed for light to medium trimming
Fits SRM Models
Accepts 20' of .095 in. line
Maximum line diameter of .105 in.

Order Number 21560070
Price: \$24.95



Maxi-Cut & Pro Maxi Cut

3 Serrated-edge polymer blades for heavy grasses
Use when traditional line will not work
Order Number 215511 - (Pro Maxi-Cut)

Price: \$21.99



Maxi-Cut
Pack of 12 Blade
Order Number: 215712
Price: \$10.99



Order Online www.propartsdirect.net | Original & Aftermarket Parts

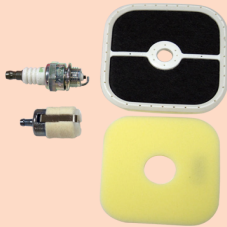




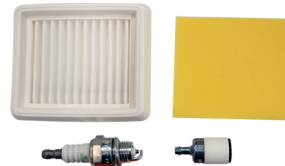
Tune Up Kit
 Kit Includes:
 Fuel Filter, Air Filter, Pre-filter
 & Spark Plug.
 Fits: PB-770
 Order Number: 90122Y
Price \$29.69



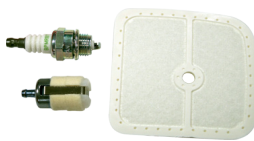
Tune Up Kit
 Kit Includes:
 Fuel Filter, Air Filter & Spark Plug.
 Fits: ES, GT, HC, HCS, HCA, PAS, PB, PE, PPF,
 PPT, SHC, SRM and TC models
 Order Number: 90152Y
Price \$17.59



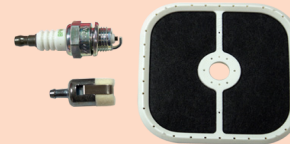
Tune Up Kit
 Kit Includes:
 Fuel Filter, Air Filter, Pre-filter & Spark Plug.
 Fits: BRD-280HCA-266PAS-266PAS-280PE-
 266PE-266SPE-280PPF-280PPT-266PPT-
 266HPPT-280SHC-266SRM-266SRM-
 266SSRM-266TSRM-266USRM-280SRM-
 280SSRM-280TSRM-280U
 Order Number: 90125Y
Price \$18.69



Tune Up Kit
 Kit Includes:
 Fuel Filter, Air Filter, Pre-filter & Spark Plug.
 Fits: PB-2620
 Order Number: 90192Y
Price \$24.19



Tune Up Kit
 Kit Includes:
 Fuel Filter, Air Filter & Spark Plug.
 Fits: ES-230ES-231HCA-260HCA-261PAS-
 260PAS-261PB-230LNPB-231LNPB-260LPB-
 261LPE-260PE-261PE-311PPT-260PPT-
 261SHC-260SHC-261SRM-260SRM-260SSRM-
 260SBSRM-260USRM-261SRM-261SSRM-
 261SBSRM-261TSRM-261USRM-311SRM-
 311SSRM-311U
 Order Number: 90153Y
Price \$16.49

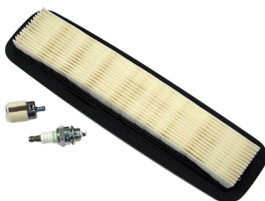


Tune Up Kit
 Kit Includes:
 Fuel Filter, Air Filter & Spark Plug.
 Fits: ES-255PB-251PB-255PB-255LNPB-
 265LPB-265LN
 Order Number: 90154Y
Price \$20.89



Tune Up Kit **Price \$34.09**
 Kit Includes:
 Fuel Filter, Air Filter & Spark Plug.
 Fits: CS-4510
 Order Number: 90197Y

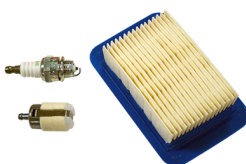
Tune Up Kit **Price \$31.89**
 Kit Includes:
 Fuel Filter, Air Filter, Pre-filter & Spark Plug.
 Fits: CS-370CS-370FCS-400CS-400F
 Order Number: 90155Y



Tune Up Kit
 Kit Includes:
 Fuel Filter, Air Filter & Spark Plug.
 Fits: PB-460LNPB-461LNPB-610PB-
 620HPB-750HPB-750TPB-751HPB-
 751TPB-755HPB-755T
 Order Number: 90161Y
Price \$24.19



Tune Up Kit
 Kit Includes:
 Fuel Filter, Air Filter, Pre-filter & Spark Plug.
 Fits: BRD-2620HCA-2620PAS-2620PE-2620PPF-
 2620PPT-2620PPT-2620HSHC-2620SRM-
 2620SRM-2620TSRM-2620USRM-3020SRM-
 3020TSRM-3020U
 Order Number: 90181Y
Price \$36.29



Tune Up Kit
 Kit Includes:
 Fuel Filter, Air Filter & Spark Plug.
 Fits: PB-403HPB-403TPB-413HPB-413TPB-
 500HPB-500TPB-580HPB-580TPB-620PB-
 620STPB-755SHPB-755ST
 Order Number: 90156Y
Price \$21.99



Shop Pack of 24 Plugs Champion OEM Spark Plugs



All service/shop packs
 supplies in packages of 24
 *Use the assigned part numbers
 to get these special shop pack
 prices when ordering

Order Number	Plug Number	Service Pack Cost
322S	RN11YC	\$49.99
431S	RC14YC	\$59.99
71S	RC12YC	\$59.99
841S	J8C	\$59.99
843S	CJ8	\$50.95
845S	J17LM	\$59.99

Order Number	Plug Number	Service Pack Cost
847S	DJ8J	\$59.99
848S	CJ8Y	\$59.99
853S	CJ7Y	\$59.99
861S	J19LM	\$50.95
868S	RJ19LM	\$69.99
852S	RCJ6Y	\$69.99



COPPERHEAD®

VORTEX TRIMMER LINE

Features & Benefits

- Less drag
- Longer wear
- Significant improvement in energy efficiency
- Up to 50% noise reduction in larger diameter lines
- Patented design
- Increased RPMs allows use of larger diameter lines
- More impact power
- Superior tensile strength
- Decreased vibration
- Twisted, Aerodynamic Design

Want Those CRISPY EDGES?



Order Number	Line Size	Price	2 or More Each
12174	.080	\$39.95	\$34.95
12175	.095	\$39.95	\$34.95
12176	.105	\$39.95	\$34.95
12177	.130	\$39.95	\$34.95
12178	.155	\$39.95	\$34.95
12179	.095	\$54.95	\$50.95
12180	.105	\$54.95	\$50.95
12181	.130	\$54.95	\$50.95
12182	.155	\$54.95	\$50.95



Trimmer Line Cutter

Line cutter simple & safe to use.

Fits on key ring.
Cuts line from .056 to .130

Order Number
12820 \$3.95 ea



Buy 2 For \$3.49 ea.

Trailer Spool Holder

Neatly stores trimmer line out of the way, tension on the spool prevents line from unwinding until you need it. Easily installs on Open and Enclosed Trailers Can Hold 3lb. or 5lb. Spools Hammered paint finish

Order Number: RA-2
PRICE: \$35.49





Echo Air Filter
Fits GT, SRM, HC, PAS & PE models.
Order Number: A226001410
Price \$5.49
10 or more \$4.99 ea



Echo Air Filter
Fits PB403, PB403H, PB403T, PB413H,
PB413T, PB500H, PB500T, PB603,
PB611, PB620, PB620ST PB650,
PB650H, PB650T, PB651T
Order Number: A226000032
Price \$8.67



Echo Air Filter
Fits EB-633 PB-60H PB-460 PB-600
PB-601 PB-750 PB-755, EB633
Order Number: 13030508361
Price \$11.52



Shindaiwa Air Filter
Fits Shindaiwa EB-802, EB-
802RT, EB854, EB854RT
Order Number: A226000531
Price \$22.67



Redmax Air Filter
Fits Redmax EB7000 & EB8000
Series Blowers.
Length: 7 3/4", Height: 13/16",
Width: 5 3/32"
Order Number: 544271501
Price \$23.49
10 or more \$20.49 ea



Redmax Pre-Filter
Fits Redmax EB7000 & EB8000
Series Blowers.
Order Number: 544271601
Price \$11.99
10 or more \$10.79 ea

REPLACEMENT FUEL FILTERS



Order Number:
12952
Price \$3.20
Bag of 10+ \$2.88 ea



Order Number:
07 210
Price \$5.47
Bag of 10+ \$4.93 ea



Order Number:
07 109
2332" OD x 1-3/4" Length
Replaces Stihl 0000-350-3500
Price \$7.58
10 For \$6.83 ea.



Order Number:
12949
Price \$3.49
Bag of 10+ \$3.14 ea



Order Number:
07 217
Fits most trimmers
Replaces Stihl 000-350-3502
Price \$6.50
10 For \$5.85 ea.



Order Number:
9025
Replaces Walbro 125-528
Price \$4.09
10 For \$3.69 ea.

MOWER FILTERS

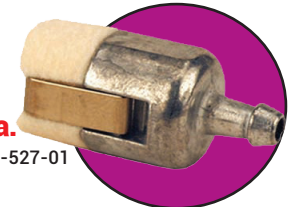


Order Number:
12619 1/4" fuel line
Price \$5.95
Bag of 10+ \$4.36 ea



Order Number:
25 050 42-S
Price \$10.99
Fits Kohler ECH630-
ECH749, ECV630-ECV749

Order Number:
9024
Price \$3.29
10 For \$2.97 ea.



Replaces Walbro 1-25-527-01

Cross Fire Line

Razor Sharp Edges - Designed for 1-pass Cutting
Twisted Geometry - Decreases Drag, Higher RPM
Optimizes Fuel Consumption
Durable Design Proven to hold up against hard surfaces



Order Number	Line Size	Weight	Sale Price
314095053	.095	3 lbs	\$39.89 ea.
316095053	.095	5 lbs	\$67.99 ea.

Round Gator Line

Gator Round Line quickly and easily cuts through low grass and grass-like weeds yet is durable enough to tackle sizable brush without breaking. This trimmer line is less likely to bond together in the trimmer head due to its weld-resistant outer layer.



Order Number	Line Size	Weight	Sale Price
22-195	.095	3 lb	\$39.95
22-595	.095	5 lb	\$59.95
22-105	.105	3 lb	\$36.95
22-505	.105	5 lb	\$59.95

Black Diamond Line

Razor Sharp Edges - Designed for 1-pass Cutting
Twisted Geometry - Decreases Drag, Higher RPM
Optimizes Fuel Consumption
Durable Design Proven to hold up against hard surfaces



Order Number	Line Size	Weight	Sale Price
330095073	.095	885 ft	\$39.95 ea.
330095075	.095	1394 ft	\$68.95 ea.

Call 800 305 9255 | Original & Aftermarket Parts



Kawasaki

Engines

QUALITY TO THE CORE

Designed for optimum oil flow, pressure, and protection in extreme conditions and high heat.



Kawasaki filters are specifically engineered for optimum flow pressure and protection in constant speed air-cooled and liquid cooled engines.

Kawasaki Oil Filter
For Kawasaki FD, FE, FH,
FJ180V and FX engines
Replaces 49065 7010

Order Number:
49065 0724

Price . . . \$9.49 ea.

12 or more

PRICE . . . \$8.49 ea.



Kawasaki Oil Filter
For Kawasaki FX and FJ
engines; HT 2-3/8"
Replaces 49065 7007

Order Number:
49065 0721

Price . . . \$9.49 ea.

12 or more

PRICE . . . \$8.49 ea.



Kawasaki Donaldson Canister Air Filter Combo Special

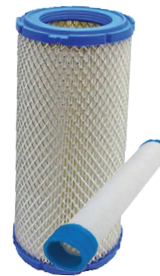


Fits FX651V - FX1000V
Internal Vented Carb

Order Number	Each
11013-7044	\$22.89
11013-7045	\$22.89

Combo Special
Outer & Inner Filter

Price: \$38.00



**Fits Kawasaki FH601D-
FH721V, FH770D, FD750D,
FD791D**

Order Number	Each
11013-7020	\$24.98
11013-7019	\$27.70

Combo Special
Outer & Inner Filter

Price: \$45.38

Fuel Filters



Most carbureted air cooled engines

Order Number	Price Each
49019-0027	\$7.89



All F730V EFI and 850V EFI Engines

Order Number	Price Each
49019-0031	\$6.95



Fits Kawasaki FD Engines

Order Number	Price Each
49019-0032	\$19.49



Fits Kawasaki
FH451V - FH580V
(Small Canister Filter)

Order Number	Price Each
11013-7029	\$18.57



Fits Kawasaki
FT730V
(Small Canister Filter)

Order Number	Price Each
11013-0763	\$23.09
11013-0764 (Pre)	\$7.83



Fits Kawasaki FX
**Fits FX481V,
FS541V - FX600V**
(Small Canister)

Order Number	Price Each
11013-7048	\$19.49

**Fits Kawasaki FR651V -
FR730V & FS481V - FS730V**

Includes Pre-Filter
Was 99999-0384



Order Number	Price Each
11029-0031	\$17.86

Oil Filter Wrench

Fits 2-1/2" to 4-1/2" Oil Filters, 20 Degree Jaw Angle.

Teeth provide non-slip grip

Order Number: 752-836

Price: \$34.95





Kawasaki K-Tech 4-Cycle Oil is enhanced with Anti-foaming and anti-shear agents, along with other special additives. K-Tech 4-cycle oil also contains Zinc which helps reduce camshaft wear.



Kawasaki K-TECH OIL 4-CYCLE OIL

**Kawasaki K-Tech
4-Cycle Oil 5 Quart
Bottles Now In-Stock!**

Order Number	Description	Each	Price Per Case (12)	
99969-6281	SAE 30 (1 Qt.)	\$7.49	(\$6.09 ea.)	\$73.08
99969-6081	10W-30 (1 Qt.)	\$7.49	(\$6.09 ea.)	\$73.08
99969-6296	10W-40 (1 Qt.)	\$7.49	(\$6.09 ea.)	\$73.08
99969-6501	15W-50 Synthetic	\$8.98	(\$8.49 ea.)	\$104.88
99969-6298	20W-50 (1 Qt.)	\$8.98	(\$6.79 ea.)	\$81.48

Order Number	Description	Each	3 Or More
99969-6502	15W-30 (5 Qt.)	\$49.95	\$44.59 ea.
99969-6504	20W-50 (5 Qt.)	\$49.95	\$44.59 ea.

Fits Kawasaki FR541V - FR600V

Was 99999-0383



Order Number	Price Each
11013-0727	\$11.85

Fits FH381V-FH580V KAI Engines

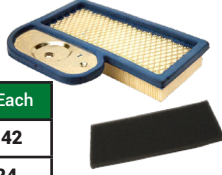
Order Number	Price Each
11013-7031	\$22.95
11013-7025	\$5.83



Pre-Filter Kawasaki
11013-7025

Fits Kawasaki FH451V - FH580V Non KAI Engine

Order Number	Price Each
11013-7002	\$18.42
11013-7033	\$4.24



Pre-Filter Kawasaki
11013-7002

Fits Kawasaki FH381/FH430 Non-KAI Engine

Order Number	Price Each
11013-7017	\$16.46
11013-7034	\$4.95



Pre-Filter Kawasaki
11013-7034

Fits Kawasaki FH601V - FH721V

Internally Vented Carb
W / Pre-Filter

Order Number	Price Each
11029-7015	\$26.47



Fits FJ180V KAI Engines

(Previously 11029-0019)

Order Number	Price Each
11029-0049	\$24.49



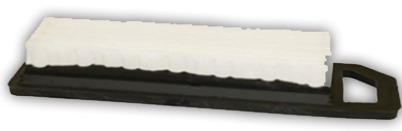
Fits FJ180V Most M & S Series

Order Number	Price Each
11013-2232	\$4.38



Fits FJ180V M Series

Order Number	Price Each
11029-0018	\$13.70



Fits FJ180V S Series

Order Number	Price Each
11029-0017	\$11.20



Kawasaki FS, FX Electric Starter

FITS MODELS - Kawasaki: FS541V-AS30, FS600V-CS24, FS600V-DS24, FS730V-AS19, FX481V-BS09, FX541V-DS05, FX541V-ES00, FX600V-DS05, FX600V-DS11, FX600V-ES00, FX600V-ES02, FX600V-FS09, FX651V-ES00, FS691V-AS24, FS691V-AS26, FS691V-AS28, FS691V-ES00, FX730V-AS29, FX730V-AS31, FX730V-AS40, FX730V-ES00.

12-Volt Starter.
Replaces 21163-0756



SAVE \$30
Regular \$269.95

Order Number	Price Each
99996-6120	\$239.95

Kawasaki Flexible Oil Drain Hose



Length: 16"
Dia: 3/4"

Hi-temperature, heavy duty braided rubber hose
Designed for durability and longevity.
Pressure tolerance: 400 psi.
Durable all brass fittings
For use on all Kawasaki Engines
Fittings convert to SAE wrench sizes.

Order Number	Price Each
51044-0902	\$34.95

Call 800 305 9255 | Original & Aftermarket Parts

Kawasaki

— ENGINES —

Tune-Up Kits Give You The Complete Set-Up To Keep Your Engine Running Its Best.

Stay Warranty Compliant with OEM Kawasaki Parts



FX 1000V, 921V Engines

Kit Contains: 2 Bottles of Oil, 1 Oil Filter, 1 Fuel Filter, 1 Inner Air Filter, 1 Out Air Filter, 2 Spark Plugs

Order Number	OIL
99969-6529	10W-40
99969-6530	20W-50
YOUR CHOICE SALE PRICE	\$119.95



FX 730V, 691V, 651V Carbureted & EFI

Kit Contains: 2 Bottles of Oil, 1 Oil Filter, 1 Fuel Filter, 1 Inner Air Filter, 1 Out Air Filter, 2 Spark Plugs

Order Number	OIL
99969-6527	10W-40
99969-6528	20W-50
YOUR CHOICE SALE PRICE	\$119.95



FT 730V EFI

Kit Contains: 2 Bottles of Oil, 1 Oil Filter, 1 Fuel Filter, 1 Inner Air Filter, 1 Out Air Filter, 2 Spark Plugs

Order Number	OIL
99969-6545	10W-40
99969-6546	20W-50
YOUR CHOICE SALE PRICE	\$109.95



FT 730V, 691V, 651V Carbureted

Kit Contains: 2 Bottles of Oil, 1 Oil Filter, 1 Fuel Filter, 1 Inner Air Filter, 1 Out Air Filter, 2 Spark Plugs

Order Number	OIL
99969-6569	10W-40
99969-6570	20W-50
YOUR CHOICE SALE PRICE	\$99.95



FH 770D KAI, 721V, 680V, 661V, 641V, 601V

Kit Contains: 2 Bottles of Oil, 1 Oil Filter, 1 Fuel Filter, 1 Inner Air Filter, 1 Out Air Filter, 2 Spark Plugs

Order Number	OIL
99969-6531	10W-40
99969-6532	20W-50
YOUR CHOICE SALE PRICE	\$120.95



FH 580V, 541V, 531V, 500V, 451V Standard Air Filter

Kit Contains: 2 Bottles of Oil, 1 Oil Filter, 1 Fuel Filter, 1 Inner Air Filter, 1 Out Air Filter, 2 Spark Plugs

Order Number	OIL
99969-6535A	10W-40
99969-6536A	20W-50
YOUR CHOICE SALE PRICE	\$89.95

Kawasaki

— ENGINES —

Tune-Up Kits Give You The Complete Set-Up To Keep Your Engine Running Its Best.

Stay Warranty Compliant with OEM Kawasaki Parts



FR 730V, 691V, 651V, All FS Seriss Carbureted & EFI
 Kit Contains: 2 Bottles of Oil, 1 Oil Filter, 1 Fuel Filter, 1 Inner Air Filter, 1 Out Air Filter, 2 Spark Plugs

Order Number	OIL
99969-6543	10W-40
99969-6544	20W-50
YOUR CHOICE SALE PRICE	\$89.95



FX 850V, 801V, 751V Carbureted & EFI
 Kit Contains: 2 Bottles of Oil, 1 Oil Filter, 1 Fuel Filter, 1 Inner Air Filter, 1 Out Air Filter, 2 Spark Plugs

Order Number	OIL
99969-6537	10W-40
99969-6538	20W-50
YOUR CHOICE SALE PRICE	\$120.00



FX600V, 541V, 481V
 Kit Contains: 2 Bottles of Oil, 1 Oil Filter, 1 Fuel Filter, 1 Inner Air Filter, 1 Out Air Filter, 2 Spark Plugs

Order Number	OIL
99969-6539	10W-40
99969-6540	20W-50
YOUR CHOICE SALE PRICE	\$99.95



FH 580V, 541V, 480V, 430V, 381V All KAI
 Kit Contains: 2 Bottles of Oil, 1 Oil Filter, 1 Fuel Filter, 1 Inner Air Filter, 1 Out Air Filter, 2 Spark Plugs

Order Number	OIL
99969-6533A	10W-40
99969-6534A	20W-50
YOUR CHOICE SALE PRICE	\$99.95



FH 721V, 680V, 661V, 641V, 601V All with Standard Air Filter
 Kit Contains: 2 Bottles of Oil, 1 Oil Filter, 1 Fuel Filter, 1 Inner Air Filter, 1 Out Air Filter, 2 Spark Plugs

Order Number	OIL
99969-6525*	10W-40
99969-6526*	20W-50
YOUR CHOICE SALE PRICE	\$99.95



FR 600V, 541V
 Kit Contains: 2 Bottles of Oil, 1 Oil Filter, 1 Fuel Filter, 1 Inner Air Filter, 1 Out Air Filter, 2 Spark Plugs

Order Number	OIL
99969-6541	10W-40
99969-6542	20W-50
YOUR CHOICE SALE PRICE	\$79.95

* KIT 99969-6525/99969-6526 IS FOR ENGINES WITH INTERNALLY VENTED CARBURETORS ONLY

Call 800 305 9255 | Original & Aftermarket Parts





KOHLER Engines

Unlike standard engine oils, KOHLER genuine oils are specifically formulated for KOHLER engines. KOHLER oils are specially blended with heavy duty, high-temperature additives providing outstanding protection.



Kohler SAE 30

Recommended for high-temperature operations and heavy-duty service

Order Number :
25 357 02-S

Price . . \$8.29 Qt.
12 or more \$7.39 ea.



Kohler 15W-40

Provides improved wear protection, deposit and oil consumption control

Order Number :
25 357 48-S

Price . . \$8.59 Qt.
12 or more \$7.69 ea.



Kohler 10W-30

Protects in a broad range of operating temp. Easier cold weather starting

Order Number :
25 357 64-S

Price . . \$8.29 Qt.
12 or more \$7.39 ea.



Kohler 20W-50

Ideal for heavy-duty service. Ideal for CH940 to CH1000, CV940 - CV1000

Order Number :
25 357 67-S

Price . . \$8.98 Qt.
12 or more \$7.49 ea.



Kohler 10W-40

Great for generators powered by gas fueled engines with flat tappet lifters

Order Number :
25 357 70-S

Price . . \$8.59 Qt.
12 or more \$7.49 ea.

Kohler Oil Filter

Short Kohler Filter
Fits Command, Command Pro

Order Number:
12 050 01S

Price \$8.49 ea.
12 or more . . \$7.29 ea.



Kohler Oil Filter

Tall Kohler Filter
Fits Command, Command Pro

Order Number:
52 050 02S

Price \$8.49 ea.
12 or more . . \$7.29 ea.



Buy 4 or More
25-083-01-S
\$18.49 ea.

Kohler Donaldson Canister Air Filter Combo Special

Buy 4 or More
25-083-03-S
\$18.49 ea.

Fits CH18-CH26, CH620-CH1000, CV17-CV26, CV620CV1000, LH630-LH775, EFI ECH630-ECH749, ECV630-ECV749

Order Number	Each
25 083 01-S	\$23.90
25 083 04-S	\$18.49

Combo Special
Outer & Inner
\$39.³⁹

Fits Command Pro CV460-CV493, OHC, TH16, TH18, TH520, TH575

Order Number	Each
25 083 02-S	\$20.95
25 083 03-S	\$20.95

Combo Special
Outer & Inner Filter
Price: \$37.⁹⁰

Kohler OEM Air Filters

**Fits Command Pro
CH395, CH440**

Pre-filter Included



Order Number	Your Price Each
17 883 03-S1	\$20.49

**Fits Command and EFI
CH18-CH25, CH620-
CH740, CV17-CV23,
CV620-CV670, ECH630
ECH749, ECV630-
ECV749**



Pre-filter Included

Order Number	Your Price
24 883 03-S1	\$23.97

**Fits 3000 Series
SH265**

Pre-filter Included



Order Number	Your Price Each
18 883 01-S1	\$17.97

**Fits Command Pro
CH260, CH270**

Pre-filter Included



Order Number	Your Price Each
17 883 07-S1	\$20.49

**Fits XT Series
XT6, XT650, XT675, XT7,
XT775, XT800**



Order Number	Your Price Each
14 083 19-S	\$10.47

**Fits 7000 Series
7000 Series
KT715 KT745**



Order Number	Your Price Each
32 883 09-S1	\$23.97

Pre-filter Included



Order Online www.propartsdirect.net | Original & Aftermarket Parts

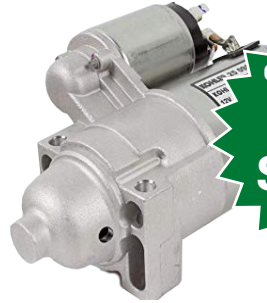


Kohler OEM STARTERS



Order Number
32 098 10-S
Price
\$198.89

Fits Kohler Courage Twin Engines. CH620, CH640, CH680, CH670, CH682, CH730, CH732, CH740 and others.



Order Number
25 098 24-S
Price
\$209.98

Fits Kohler Command Twin. Includes starter solenoid.



Order Number: 25 050 21-S
Price \$6.98
Fits Kohler CH11-CH16, CH410-CH450, CV13-CV16, CV430-CV493



Order Number: 24 050 03-S
Price \$59.89

Kohler EFI Fuel Filter
Fits Kohler EFI CH26, CH735, CH745, CV26, CV735, CV745, EFI LH775



Order Number: 24 050 13-S
Price \$8.95

Fits Kohler CH18-CH25, CH620-CH742, CH750-CH1000, CV18-CV25, CV620-CV742, ECH630-ECH749, ECV630-ECV1000, SV710-SV840, LH630



Kohler Vacuum Fuel Pump
Fits Kohler CH18-CH750, CV18-20, SV700 - SV840, ZT710 - ZT740.

Order Number: 24 393 16-S
List Price \$36.09

Sale Price
\$24.89

Kohler Fuel Pump
Used on Kohler CH18, CH20, CH23, CH25, CH27, CH620, CH640, CH670, CH680, CH730, CH740, CH750 engines.



Order Number: 24 559 10-S
List Price \$147.98

Sale Price
\$139.60

Fits Command CV11 - CV16



Pre-filter Included

Order Number	Your Price Each
12 883 05-S1	\$15.89

Fits Command Pro CV11 - CV16, CV430 - CV493



Pre-filter Included

Order Number	Your Price Each
12 883 10-S1	\$15.89



Fits Command CH11-CH16, CH410-CH450, M18-M20, KT17, KT19



Pre-filter Included

Order Number	Your Price Each
47 883 01-S1	\$21.89

Fits Confidant ZT710 - ZT740



Pre-filter Included

Order Number	Your Price each
16 883 01-S1	\$28.49

Fits Confidant ZT710 - ZT740, 7000 Series KT715 - KT745



Pre-filter Included

Order Number	Your Price Each
16 883 04-S1	\$28.49

Fits Courage SV470 - SV620



Pre-filter Included

Order Number	Your Price Each
20 883 06-S1	\$18.49

Fits Courage SV710 - SV740



Pre-filter Included

Order Number	Your Price Each
32 883 03-S1	\$21.59

Fits Courage PRO SV810 - SV840



Pre-filter Included

Order Number	Your Price
32 883 06-S1	\$19.98

Call 800 305 9255 | Original & Aftermarket Parts

KOHLER Engines

Maintenance Kits

A regular schedule of preventive maintenance with genuine KOHLER parts helps: engine performance, Ensures easy starts, Extends engine life Prevent repairs and Support warranty protection.



FOR COMMAND PRO 824CC

Kit Contains: Air Cleaner, Pre-Cleaner, Oil Filter, Fuel Filter, Oil (3) and Spark Plugs (4)

Order Number	Your Price Each
19 789 01-S	\$79.95



FOR COURAGE SINGLE

Kit Contains: Air Cleaner, Pre-Cleaner, Oil Filter, Fuel Filter, Oil (2) and Spark Plug

Order Number	Your Price Each
20 789 01-S	\$57.95



FOR COMMAND TWIN

Kit Contains: Air Cleaner, Pre-Cleaner, Oil Filter, Fuel Filter, Oil (2) and Spark Plug (2)

Order Number	Your Price Each
24 789 01-S	\$64.95



FOR COMMAND PRO TWIN

Kit Contains: Air Cleaner, Pre-Cleaner, Oil Filter, Fuel Filter, Oil (3) and Spark Plugs (2)

Order Number	Your Price Each
24 789 02-S	\$64.95



FOR HDCA

Kit Contains: Air Cleaner, Oil Filter, Fuel Filter, Oil (3) and Spark Plugs (2)

Order Number	Your Price Each
25 789 01-S	\$69.95



FOR COMMAND PRO TWIN HDAC EFI MAINTENANCE

Kit Contains: Air Cleaner, Oil Filter, Fuel Filter, Oil (3)

Order Number	Your Price Each
25 789 03-S	\$69.95



FOR COURAGE TWIN

Kit Contains: Air Cleaner, Pre-Cleaner, Oil Filter, Fuel Filter, Oil (2) and Spark Plugs (2)

Order Number	Your Price Each
32 789 01-S	\$59.95



FOR 7000 SERIES

Kit Contains: Air Cleaner, Pre-Cleaner, Oil Filter, Fuel Filter, Oil (2) and Spark Plugs (2)

Order Number	Your Price Each
32 789 02-S	\$59.95



FOR 7000 SERIES PRO

Kit Contains: Air Cleaner, Pre-Cleaner, Oil Filter, Fuel Filter, Oil (2) and Spark Plugs (2)

Order Number	Your Price Each
32 789 03-S	\$59.95



Order Online www.propartsdirect.net | Original & Aftermarket Parts

KOHLER® PRO 300 HOUR OIL CHANGE KITS



Kohler PRO 10W-50 full synthetic oil and Kohler PRO extended life oil filters, when paired together, triple the oil change interval from 100 to 300 hours on Kohler gas engines.

- Reduces annual oil change costs by up to 50% and improves equipment up-time and productivity.
- Kohler PRO 10W-50 is engineered by Amsoil as a premium lubricant specifically for air-cooled engines.
- 10W-50 viscosity ensures all-season performance.
- Formulated for lower oil consumption than comparable conventional oil.
- Increased wear protection under extreme temperatures and operating conditions.
- Includes extra corrosion inhibitor for superior protection during seasonal storage.
- Kohler PRO Extended life oil filter features robust construction with premium media for extra capacity and superior filtration.

Order Number	Engine Family	Models	Oil Filter + 10W-50 Oil	SALE PRICE
25 850 01-S	Command Pro	CV173, CV200, CV224	1 Quart	\$39.95
25 850 02-S	5400, 6600 & 7700 Series, 7500 Series EFI	KS530-595, KT610-620 KT715-745, EKT730-750	2 Quarts	\$59.95
	Courage Single & Twin	SV470-620, SV710-740		
	Confindant Confindant EFI	ZT710-740, EZT725-750		
	Command, Command Pro Command Pro EFI	CV11-16, CV17-25, CV30-CV493, CH11-16, CH18-25, CH410-450		
		CV620-752, ECV630-749 CH620-752, ECH630-749		
Aegis, Aegis EFI	LH690-775-ELH775			
25 850 03-S	Command PRO	CH/CV940-980 ECH/ECV940-980	3 Quarts	\$69.95

Call 800 305 9255 | Original & Aftermarket Parts



Original Equipment Air Filters

**Fits models
540000 & 610000
Engine series
2 1/2"IDx4 1/8"OD
x10 3/4"HT**



**Donaldson
Canister
Air Filter Special
841497 & 821136
For
\$48.38**

**Fits ELS & Pro Series
engines. V-twin
16-27 HP engines**



**Fits Model 44 & 49
Cyclonic Filter**



Order Number	Your Price
841497	\$24.89
821136 (Inner)	\$23.49

Order Number	Your Price
792105	\$20.99
792303 (Pre)	\$8.59

Order Number	Your Price
798897	\$20.95
593217 (Pre)	\$6.29

**Fits V-Twin Vanguard,
29000, 303400,
400400**

5-5/8 x 7 x 2-1/4



**Fits Single Cylinder
20-21 HP engines**



**Fits 3/LC Filter,
Models 540000
& 610000 series**



Order Number	Your Price
394018S	\$13.99
272490S (Pre)	\$4.49

Order Number	Your Price
793569	\$15.95
793685 (Pre)	\$4.79

Order Number	Your Price
820263	\$22.99

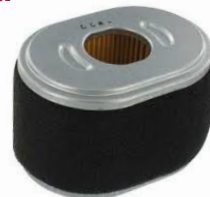
**Fits V-Twin
Vanguard Engines**

5-1/2 x 7-3/4 x 2-1/4in



**Fits 9.5 Hp
Briggs Horizontal
engines**

Pre-filter Included



**Fits Vanguard
200 Series
Engines**



Order Number	Your Price
692519	\$17.49
692520 (Pre)	\$5.89

Order Number	Your Price
590601	\$17.89

Order Number	Your Price
596760	\$24.89

**Fits 125 Series
Engines**



Order Number	Your Price
595853	\$10.95

MAINTENANCE KITS

	Order Number	Description	Price
	84004937	For Vanguard V-Twin 12-21 HP Engines	\$59.95
	84002317	Professional Series 24, 25 & 27 GHP V-Twin Engines	\$54.95
	84002316	Commercial Series 20, 25 & 27 GHP V-Twin Engines	\$75.95
	84002318	Vanguard 810cc V-Twin EFI, Oil Guard Engines, 37 HP Blig Block EFI Oil Guard Engines	\$99.95
	84002315	810cc V-Twin Non-Oil Guard Engines, 28, 31, 32, 35 & 37 HP EFI Non-Oil Guard Engines	\$69.95



Order Online www.propartsdirect.net | Original & Aftermarket Parts

VANGUARD™

COMMERCIAL POWER

BRIGGS & STRATTON



Briggs Oil Filter
For pressure Lubrication
& 3/LC gas engines
Order Number:
491056
Price . . . \$9.39 ea.
12 or more
PRICE . . . \$7.39 ea.



Briggs Oil Filter
Vanguard engines
5 - 14 HP, HT 2-1/4"
Order Number:
492932S
Price . . . \$8.39 ea.
12 or more
PRICE . . . \$6.39 ea.



Briggs Oil Filter
Oil filter for
ELS Engines
Order Number:
696854
Price . . . \$12.95 ea.
12 or more
PRICE . . . \$9.49 ea.



Briggs Oil Filter
Oil filter for Model 12
Professional series
Order Number:
795990
Price . . \$13.79 ea.
12 or more
PRICE . . . \$12.99 ea.



Briggs Oil Filter
Oil filter for 3LC Engines
Order Number:
820314
Price . . \$21.49 ea.
12 or more
PRICE . . \$18.49 ea.



Briggs Oil Filter
Oil filter for Vanguard
Engines
Order Number:
842921
Price . . \$12.49 ea.
12 or more
PRICE . . \$8.49 ea.



Briggs Oil
SAE 30 Oil
18 oz Bottle
Order Number:
100005
Price . . \$4.99 ea.



Vanguard Synthetic Oil
SAE 15W-50 Oil
32 oz Bottle
Order Number:
100169
Price . . \$10.49 ea.
12 or more
PRICE . . \$9.49 ea.



Vanguard Synthetic Oil
SAE 15W-50 Oil
5 qt. Bottle
Order Number:
100170
Price . . \$54.95 ea.
4 or more
PRICE . \$49.95 ea.



Briggs Oil
SAE 30 Oil
48 oz Bottle
Order Number:
100028
Price . . \$15.98 ea.
8 or more
PRICE . . \$12.49 ea.



Briggs Synthetic Oil
SAE 5W-30 Oil
32 oz Bottle
Order Number:
100074
Price . . \$6.59 ea.
12 or more
PRICE . . \$6.19 ea.



Oil Filter Wrench
Fits 2-1/2" to 4-1/2" Oil Filters,
20 Degree Jaw Angle.
Teeth provide non-slip grip
Order Number: 752-836
Price: \$34.95

Call 800 305 9255 | Original & Aftermarket Parts



Mechanics 1st Choice

REPAIR SHOP TOOLS

9" X 5" Magnetic Tool Tray

Magnetic Tool Tray 9"X 5" heavy duty, stainless steel, powerful magnets with scratch resistant rubber coating. Ideal for holding small parts and tools



Order Number. 16402

Price: \$20.85

Service Repair Tags

Made of durable material, with reinforced eyelets. Will help organize information, minimize errors & alert personnel to special instructions. (100 per pack) Wire attached.
SIZE 3-1/4" X 6-1/4"



Order Number. 9087

Price: \$0.49 ea.

Ignition Spark Tester

Checks the integrity of the Electrical Ignition & Magneto/Coil Ignition Systems of Lawnmowers, Boat Motors, Motorcycles. The tester checks both current & voltage & will indicate fouled electrodes.



Order Number. 7731

Price: \$13.15

Mower Deck Leveler

Oregon Deck Leveler Accurately measures height of deck from ground on all sides. Place gauge on Flat concrete floor for best results. Measure 4 corners of deck. Make adjustments to deck hanging chains or rods.

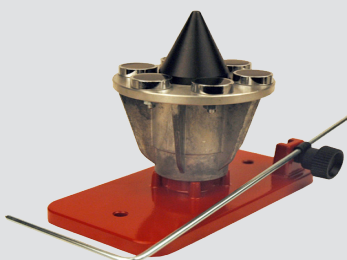


Order Number. 42-095

Price \$9.83

Tecomec Magnetic Blade Balancer

Tecomec Magnetic Wall Mount Blade Balancer. 6 Magnets allow better stability. Imported.



Order Number. 13216

Price: \$149.00

Throttle Wire Bending Tool

Throttle Wire bending tool for making Z bends and curls in throttle and choke wire.



Order Number. 1720

Price: \$7.95

Hour Meter

Sendec Digital Hour Meter. Small Panel Mount. Used on several riders: #16942 AYP, #177501, 110940X Old #169642. CE Certified.



Order Number. 10408

Price: \$39.95

SHOP TOOLS

Oil Extractor

For use on Lawnmowers, tillers, snow blowers, ATV's and transmission differentials. 3 Qt Capacity No Electricity needed.



Order Number. 750-732

Price \$31.95

Hand-E Quick Funnel

Molded for holding bottles Fits multiple openings Holds 1 qt.



Order Number. 051-680

Price . . \$89.49 ea.



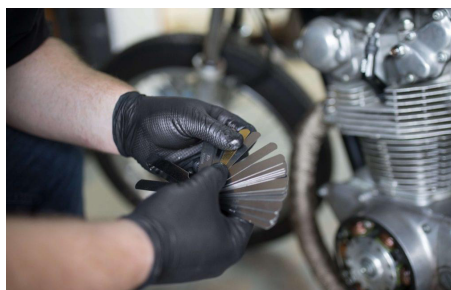


Mechanics 1st Choice

REPAIR SHOP TOOLS

Mechanics-Grade NITRILE GLOVES

Duraskin Nitrile gloves are designed for performance with better grip and stronger material. Keep hands clean and protected from dirt, oil, cleaners and chemicals in the shop or on the job.



4MM MECHANIC DUTY

Order Number	Description	Price ea.
80036	Large - Box of 100 Gloves Color: Black,	\$11.00
80039	Extra Large - Box of 100 Glove Color: Black	\$11.00

6MM HEAVY-DUTY DUTY

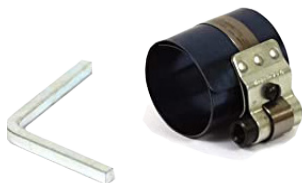
Order Number	Description	Price ea.
80037	Large - Box of 50 Gloves Color: Black,	\$11.99
80040	Extra Large - Box of 50 Glove Color: Black	\$11.99

8MM EXTREME DUTY

Order Number	Description	Price ea.
80038	Large - Box of 50 Gloves Color: Black,	\$15.95
80041	Extra Large - Box of 50 Glove Color: Black	\$15.95

Visit us at propartsdirect.net to learn on how you can become a small engine repair shop account. Enjoy repair shop discounts and specials. If you are tax exempt we can do that to!

Ring Compressor



Piston ring compressor is adaptable to all types of rings. Oregon replacement parts are built to meet or exceed OEM standards. Capacity: 1-3/4" to 3-1/2"

Order Number: 1749

Price: \$17.39

Valve Spring Compressor



For removing & replacing Valve Springs of Briggs & Stratton Engines

Order Number: 9054

Price: \$49.00

Carburetor Jet Cleaning Tool



Helix Carburetor Jet Cleaning Tool, to clean clogged jets and passageways inside the carburetor. Kit has ten wire sizes to cover the most common jet sizes, come in Helix storage case.

Order Number: 16597

Price: \$26.39

Belt Measurer



Belt Measurer. Measures 3/8, 1/2, & 5/8. Fractional Horse-Power Belts as well as A & B Section Industrial Belts up to 110.

Order Number: 9108

Price: \$56.50

Call 800 305 9255 | Original & Aftermarket Parts



TORO SINGLE STAGE SNOW BLOWER PARTS

TORO GENUINE PARTS

Model
38454 / 38452
621R - 621E



Order Number	Description	Each
108-4921	Belt	\$17.99
99-9313	Paddles	\$27.49
2 or more (99-9313) \$24.00 ea.		
125-1128	Extended Life Paddles	\$40.89
2 or more (125-1128) \$36.00 ea.		
117-9145	Clutch Cable	\$15.18
133-5585	Scraper	\$22.49

Model
38282 / 38272
4182E - 418ZR



Order Number	Description	Each
117-7733	Belt	\$13.99
117-7700	Paddles	\$28.49
2 or more (117-7700) \$24.49 ea.		
117-7721	Drive Cable	\$19.97
117-7717	Scraper	\$14.49

Model
38741 / 38742
721QZR - 721QZE



Order Number	Description	Each
121-6622	Belt	\$15.89
99-9313	Paddles	\$27.49
2 or more (99-9313) \$24.00		
125-1128	Extended Life Paddles	\$40.00
2 or more (125-1128) \$36.00		
115-5682	Clutch Cable	\$9.89
133-5585	Scraper	\$22.49

Model
38751
721R-C



Order Number	Description	Each
121-6622	Belt	\$15.89
125-1128	Paddles	\$40.89
2 or more (125-1128) \$36.00 ea.		
115-5282	Clutch Cable	\$9.89
133-5585	Scraper	\$16.89

Model
38515
2450 GTS



Order Number	Description	Each
95-6151	Belt	\$22.99
99-9313	Paddles	\$27.49
2 or more (99-9313) \$24.00 ea.		
125-1128	Extended Life Paddles	\$40.89
2 or more (125-1128) \$36.00 ea.		
110-3437	Clutch Cable	\$9.99
55-8760	Scraper	\$19.89

Model
38172 / 38182
Powerlite 325R-E



Order Number	Description	Each
75-9010	Belt	\$16.99
84-1980	Paddles	\$27.89
2 or more (84-1980) \$26.00 ea.		
75-8780	Extended Life Paddles	\$16.99

Model
38272 / 38282
Powerlite R-E



Order Number	Description	Each
117-7733	Belt	\$13.99
117-7700	Paddles	\$28.89
2 or more (117-7700) \$24.49 ea.		
117-7721	Drive Cable	\$19.97
117-7717	Scraper	\$14.49

Model 22456
Toro Dingo Snowblower

Order Number	Description	Price Ea.
100-4600-01	Skid Shoe Asm	\$93.97
99-2303-01	Scraper Blade	\$128.56
322-14	Auger Screw	\$2.26
3296-29	Nut	\$1.99
5-7170	Gear	\$95.99
5-7180	Gear Work 27T	\$138.99
105-1404	Gearbox Gasket	\$25.92
7-0045	Oil Seal	\$12.95

TORO Dingo Compact Utility Loaders



Order Online www.propartsdirect.net | Original & Aftermarket Parts

HONDA SNOW BLOWER PARTS

HONDA

Power

Equipment

Single Stage Snow Blowers

	Scraper Guard	Each	Auger Belt	Each
HS520A/AS	76322-V10-020	\$13.90	22431-V10-013	\$18.90
HS50K1AS	76322-V10-020	\$13.90	22431-V10-013	\$18.90
HS720	76322-V10-020	\$13.90	22431-V10-013	\$18.90



All Honda Snow Blowers Spark Plug
 Order Number: BPR5ES
Price: \$5.89



HS Snow Blowers

Auger Shear Bolt

Order Number: 92101-06016-0A

Price: \$1.52

Auger Shear Nut

Order Number: 90114-SA0-000

Price: \$3.30



Blower Shear Bolt

Order Number: 90102-732-010

Price: \$3.95

Blower Shear Nut

Order Number: 90114-SA0-000

Price: \$3.30

	Type	Scraper Guard	Each	Auger Belt	Each	Transmission Belt	Each	Skid Shoes	
HS724	W	76713-767-C30	\$64.80	22432-736-A01	\$28.22	22431-767-003	\$14.36	76153-736-010 76153-743-611	\$24.89 \$27.36
HS724	T	76713-V04-W00	\$43.04	22432-V03-000	\$28.92	22431-767-003	\$14.36	76153-743-611	\$27.36
HS724K1	W	76713-V04-W00	\$43.64	22432-736-A01	\$28.22	22431-767-003	\$14.36	76153-736-010 76153-743-611	\$18.40 \$23.12
HS724K1	T	76713-V04-W00	\$36.40	22432-V03-000	\$28.92	22431-767-003	\$14.36	76153-743-611	\$27.36
HS828K1	All	76713-768-000	\$61.02	22432-V03-000	\$28.92	22431-768-003	\$14.36	76153-743-611	\$27.36
HS928	All	76713-768-000	\$61.02	22432-V03-000	\$28.92	22431-768-003	\$14.36	76153-743-611	\$27.36
HS928K1	All	76713-768-000	\$61.02	22432-V03-000	\$28.92	22431-768-003	\$14.36	76153-V41-000	\$20.52
HS1132	All	76713-V03-000	\$65.70	22432-V03-000	\$28.92	22431-768-003	\$14.36	76153-743-611	\$27.36
HS1332	T	76713-V03-000	\$65.70	22432-V03-000	\$28.92	22431-768-003	\$14.36	76153-V41-000	\$20.52
HS1336I	A	76713-V03-000	\$65.70	22432-V03-000	\$28.92	22431-768-003	\$14.36	76153-736-010	\$21.78



HSS Snow Blowers

Auger Shear Bolt

Order Number: 90119-V45-A00

Price: \$0.48

Auger Shear Nut

Order Number: 90343-ZE6-000

Price: \$1.74



Blower Shear Bolt

Order Number: 90121-V45-A00

Price: \$0.68

Blower Shear Nut

Order Number: 90343-ZE6-000

Price: \$1.74

	Type	Scraper Guard	Each	Auger Belt	Each	Transmission Belt	Each	Skid Shoes	
HSS724A	W	76322-V45-A00	\$62.56	22432-V45-A11	\$50.70	22431-V45-A11	\$20.32	76728-V45-A00 (Rear Mount) 76728-V45-A20 (Side Mount)	\$9.48 \$12.58
HSS724A	T	76322-V45-A00	\$62.56	22432-V45-A11	\$50.70	22431-V45-A11	\$20.32	76728-V45-A00 (Rear Mount)	\$9.48
HSS928A	W	76322-V45-A20	\$64.84	22432-V45-A11	\$50.70	22431-V45-A11	\$20.32	76728-V45-A00 (Rear Mount) 76728-V45-A20 (Side Mount)	\$9.48 \$12.58
HSS928A	T	76322-V45-A20	\$64.34	22432-V45-A11	\$50.70	22431-V45-A11	\$20.32	76728-V45-A00 (Rear Mount)	\$9.48
HSS1332A	T	76322-V45-A40	\$67.22	22432-V45-A11	\$50.70	22431-V45-A11	\$20.32	76728-V45-A00 (Rear Mount)	\$9.48

Call 800 305 9255 | Original & Aftermarket Parts



MAMMOTH SNOWBLOWER PARTS

Built to clear the snow like no other,
Original parts built to withstand the Winter.



Chute Parts For All Models



Order Number	Description	Price
09450000	Chute Acuator	\$299.95



09455500

Motor Assembly Parts

Order Number	Description	Price
09455500	Rotation Gear Motor Chute	\$349.95
09453000	Chute Gear Drive	\$19.95
09455100	Motor Shaft Adaptor	\$49.95

36" Housing Parts

Model 851002

Order Number	Description	Price
04148959	Runer, Skid Shoe	\$39.95
05902250	Hex Bolt	\$1.25
09452059	Cutting Edge	\$49.95
07002026	Shear Bolt	\$14.95
09445400	Blower Harness	\$99.95

48" Housing Parts

Model 851001, 301



Order Number	Description	Price
04148959	Skid Shoe Runner	\$39.95
09450659	Cutting Edge	\$79.95
09445400	Blower Harness	\$99.95
07002026	Shear Bolt	\$14.95



36" Auger Assembly Parts

Model 851002, 851302

Order Number	Description	Price
09451700	Shear Coupler Weldment	\$99.95
05901611	Hex Bolt 0.375-16 x 2.75	\$3.25
06500825	Hex Nut	\$0.95
06501021	Nylon Nut	\$1.05
06600121	Square Key	\$3.20
07002026	Shear Bolt	\$14.95
09451800	PTO Blower Shaft	\$299.95
30124800	Model 851002 Worm Gearbox	\$549.95
55102400	Flange Bearing Kit w/Hardware	\$69.95
30124800	Model 851302 Worm Gearbox	\$549.95

48" Auger Assembly Parts

Model 851001, 851301

Order Number	Description	Price
09451700	Shear Coupler Weldment	\$99.95
05901611	Hex Bolt 0.375-16 x 2.75	\$3.25
06500825	Hex Nut	\$0.95
06501021	Nylon Nut	\$1.05
06600121	Square Key	\$3.20
07002026	Shear Bolt	\$14.95
09451800	PTO Blower Shaft	\$299.95
30124800	Model 851001 Worm Gearbox	\$549.95
55102400	Flange Bearing Kit w/Hardware	\$69.95
30124800	Model 851301 Worm Gearbox	\$549.95



ARIENS

466090

MAMMOTH SNOWBLOWER PARTS

Built to clear the snow like no other,
Original parts built to withstand the Winter.



Your First Choice for Ariens Mammoth Parts! Accessories and Kits for the Ariens Mammoth

Order Number	Description	Price
72105300	NEW! Mammoth Engine Tune-Up Kit	\$129.99
70731200	Mammoth Hydraulic Maintenance Kit	\$89.99
72104500	Professional Skid Shoe Kit (sold as a pair)	\$49.99
75100100	48" Poly Scraper Bar Kit, For use with Straight Plow	\$159.99
75100200	Rear Accessory Mount for use with Salt Spreader	\$549.99
75100300	Mammoth Premium Snow Cab, Fits Mammoth 850	\$1749.99
75100400	Hazard Light Kit, for use with Salt Spreader 851006	\$199.99
75100600	Plow Skid Shoe Kit, For use with Straight plow 851003	159.99
75100700	Salt Spreader Strobe Light Kit, for use with spreader 851006	\$149.99
75100800	Salt Spreader work light kit, for use with spreader 851006	\$249.99
75100900	NEW! 6" wing Extension kit (sold as pair) For use with V-Plow	\$679.99
75101100	48" V-Plow Rubber Deflector - For use with V-plow 851007	\$249.99
75101200	NEW! V-Plow Skid Shoe Kit For use with V-plow 851007	\$229.99
00078300	Mammoth Transmission Oil	\$16.95
00078500	Mammoth Snow Gear Box Oil	\$13.95

Mammoth Broom Parts

Order Number	Description	Price
75100500	Bristle Replacement Kit (Set of 22 Wafers)	\$324.99
55102400	Bearing Flange Kit w/Hardware	\$69.95
09451300	Caster Wheel	\$129.99
09454600	Brush Actuator	\$799.99
09444700	Wire Harness	\$109.95
09452100	Pivot Shaft	\$24.95



Call 800 305 9255 | Original & Aftermarket Parts



Carlisle Tires

TURF MASTER



Size	Order Number	PLY	Price
13 x 6.50 - 6	5112491	4	\$46.95
15 x 6.00 - 6	5112521	4	\$52.95
16 x 6.50 - 8	5114011	4	\$68.89
16 x 7.50 - 8	5114021	4	\$74.89
18 x 6.50 - 8	5114171	4	\$84.95
18 x 8.50 - 8	5114041	4	\$88.59
20 x 8 - 10	5114281	4	\$92.95
20 x 10 - 8	5114051	4	\$129.95
20 x 10 - 10	5114161	4	\$129.95
23 x 9.50 - 12	6L08381	4	\$159.95
23 x 10.50 - 12	5114081	4	\$159.95
24 x 9.50 - 12	511434	4	\$129.95
24 x 12 - 12	5114091	4	\$178.88

TURF-SAVER



Size	Order Number	PLY	Price
11 x 4.00-5	5110101	2	\$29.88
13 x 5.00-6	5110211	4	\$34.95
13 x 6.50-6	5111861	4	\$42.95
15 x 6.00-6	5110301	2	\$34.95
16 x 6.50-8	5110961	4	\$44.88
18 x 6.50-8	5110991	2	\$56.95
18 x 8.50-8	5110711	4	\$76.88
18 x 9.50-8	6L05011	4	\$105.95
20 x 8.00-8	5110801	2	\$79.95
20 x 10.00-8	5111011	2	\$98.49

SMOOTH



Size	Order #	PLY	Price
8x350-4	5120081	4	\$22.95
9x350-4	5120101	4	\$22.95
11x400-5	5120111	4	\$36.88
13x500-6	5120211	4	\$45.88
13x650-6	5121861	4	\$44.95

RIB



Size	Order #	PLY	Price
11x4.00-4	5110921	4	\$37.88
13x5.00-6	5180211	4	\$32.95
13x6.50-6	5181861	4	\$38.88
15x6.00-6	5180311	4	\$37.88
16x6.50-8	5180961	4	\$64.88

TUBES



Size	Order #	Price
13 x 500	71-096	\$10.37
15 x 600	71-102	\$11.45
410 / 350	71-610	\$8.08
18 x 850 / 950	71-104	\$23.83
20 x 800	71-004	\$23.23
16 x 650	71-816	\$14.85
20 x 10.00	71-100	\$27.22
23 x 1050	71-408	\$29.70
480/400/8	71-800	\$9.10
20x10x8	71-407	\$20.49
16x650x8	71-406	\$19.89
26x12x12	71-283	\$41.28
22X11X8	71-098	\$36.69
11x4x5	71-403	\$7.19

MULTI TRAC



Size	Order #	PLY	Price
18x8.50x10	5743U1	4	\$89.95
18x10.50-10	5743E51	4	\$138.88
24x9.50-12	574338	4	\$149.95
26x12.00-12	574361	4	\$174.95
23 x 9.50-12	574329	4	\$139.95
18x800 - 10	574311	4	\$88.95

OTR GRASSMASTER



Size	Order #	PLY	Price
18x850x10	6GM454	4	\$99.95
23x1050-12	6GM814	4	\$199.88
24x12x12	6GM874TL	4	\$214.95
25x12x12	6GM934	4	\$229.88

BUY NOW & PAY LATER
 PROPARTS DIRECT GIVES YOU THE OPTION TO BUY THE PARTS YOU NEED NOW AND PAY OVER TIME WITH AFFIRM. CHOOSE AFFIRM AT CHECKOUT TO APPLY FOR FIXED MONTHLY PAYMENT OPTIONS THAT FIT ANY BUDGET.
*SUBJECT TO ELIGIBILITY. PAYMENT OPTIONS THROUGH AFFIRM ARE PROVIDED BY THESE LENDING PARTNERS: AFFIRM.COM/LENDERS.

Walker Carlisle Tires

5743U1 5743E51 5120211



Size	Order #	PLY	Price
18 x 8.50 x 10	5743U1	4	\$89.95
18 x 10.50 x 10	5743E51	4	\$138.88
13 x 500 x 6	5120211	4	\$45.88



5715-17



5715-18

Order Number	Description	Price
5715-24	8 x 300 x 4 Tire / Rim Pneumatic Tire	\$123.42
5715-23	Flat Free Version of 5715-17	\$124.79
72-756	Replaces 5715-18, 5715-23	\$77.00
5714-3	Sleeve 9 Inner	\$10.98



Order Online www.propartsdirect.net | Original & Aftermarket Parts

THE NEWEST TURF TIRE FOR ZERO-TURN MOWERS

- Consistent hub height helps ensure the mower deck produces an even cut.
- Excellent lateral stability on hillsides and sloped surfaces, and outstanding operator comfort, even when navigating over curbs and other bumps.
- High performance compounds and an efficient contact patch designed to provide a longer life that is 2-3 times that of a pneumatic tire at equal tread depth.

Why Tweels?

CALL US FOR FITMENT!



Gravelly				Front Caster	Price	Rear Tire Size	Rear Tire	Price
Pro-Turn 200		5	52/60/72	49136	\$309.95	24x12x12	54411	\$749.95
Pro-Turn 400		5	52/60/72	49136	\$309.95	24x12x12	54411	\$749.95
Pro-Turn 300		5	48/52/60/72	49136	\$309.95	24x12x12	54411	\$749.95
Pro-Turn 500		5	52/60/72	49136	\$309.95	26x12x12	25913	\$789.95
Pro Turn 600		5	52/60/72	49136	\$309.95	26x12x12	25913	\$789.95

Exmark Toro				Front Caster (Spacer)	Price	Rear Tire Size	Rear Tire	Price
Radius	RAE708GEM48300	4	48	73818 (Spacer 40653)	\$249.95	22x11x12	37968	\$679.95
Lazer Z	LZX940EKC60600	4	60	73818 (Spacer 40653)	\$249.95	24x12x12	50357	\$859.95
Lazer Z	LZX980EKC726W0	4	72	73818 (Spacer 40653)	\$249.95	24x11x12	50357	\$859.95

Exmark OEM TWEEL				Order Number	Price	Rear Tire Size		
Tractus	Lazer Z	4	60	135-2286	\$889.95	24x12x12		
Tractus	Lazer Z	4	72	135-2287	\$889.95	26x12x12		



TWEEL Tires are the newest, hottest thing in the lawn industry. That being said, Michelin® is still learning what tires fit what machine. Contact us with your model number to make sure you have the right fit. New machines are being added monthly.

SCAG				Front Caster (Spacer)	Price	Rear Tire Size	Rear Tire	Price
Turf Tiger II	STTII-52V	4	52	73818 (Spacer 40653)	\$249.95	26x12x12	08189	\$789.95
V-Ride II	SVRII-52V	4	52	73818 (Spacer 40653)	\$249.95	24x12x12	77185	\$749.95
V-Ride II	SVRII-61V	4	61	73818 (Spacer 40653)	\$249.95	24x12x12	77185	\$749.95
Cheetah	SCZ72V	5	72	73818 (Spacer 38182)	\$249.95	24x12x12	54411	\$749.95

TORO				Front Caster (Spacer)	Price	Rear Tire Size	Rear Tire	Price
5000 Series	74915	4	60	73818 (Spacer 40653)	\$249.95	24x12x12	77185	\$749.99
6000 Series	74926	4	60	73818 (Spacer 40653)	\$249.95	24x12x12	50357	\$859.95
6000 Series	74928	4	72	73818 (Spacer 40653)	\$249.95	24x12x12	50357	\$859.95

Toro OEM TWEEL				Order Number	Price	Rear Tire Size		
X-Tweel	Titan HD, Z 2000	4		139-3649	\$749.95	24x12x12		
X-Tweel	GrandStand	4		139-7890	\$539.95	18x8.5x10		
X-Tweel	Certain Z Master Models	4		139-7891	\$749.95	24x12x12		

Wright				Front Caster (Spacer)	Price	Rear Tire Size	Rear Tire	Price
Wright Mowers	MMZ	5	52	52441 (Spacer 65019)	\$249.95	N/A	N/A	
Wright Mowers	MMZ	5	61	52441 (Spacer 65019)	\$249.95	24x12x12	54411	\$749.95
Wright Mowers	ZTO	5	52	N/A		24x12x12	54411	\$749.95
Wright Mowers	ZTO	5	61	N/A		24x12x12	54411	\$749.95

Call 800 305 9255 | Original & Aftermarket Parts





HAND PUMP AND BATTERY POWERED SPRAYERS MULTI USE SPRAYERS FOR FERT & PESTICIDES



4 Gallon Smith Multi-Use Li-ion S2E Back Pack

The Smith Multi-Use 4 Gallon Lithium-Ion Powered Backpack Sprayer is the ideal applicator that provides consistent, repeatable performance. Spraying up to 50 gallons on one charge of the 18V lithium-ion battery, this sprayer has completely eliminated the need to ever pump again, saving time, energy...and money!

Order Number. 190576

Sale Price: \$254.⁹⁵



2 Gallon Smith Multi-Use 7.2V Li-Ion Sprayer

With faster flow rates, consistent output pressure and no pumping, The Smith Multi-Use 2 Gallon Battery Powered Sprayer with Pump Zero™ technology revolutionizes the compressed air sprayer industry. This lithium-ion powered sprayer will save the user time, money and energy. The rechargeable battery, built into the pump handle, enables the user to spray up to 24 gallons of both liquids and wettable powders on a single charge.

Order Number. 190671

Sale Price: \$128.⁶⁹



2 Gallon Smith Multi-Use Pump Sprayer

The Smith Multi-Use 2 Gallon Manual Pump Sprayer provides versatility for countless professional liquid applications, including turf, pest control and concrete chemicals. With Viton seals and premium components throughout, this unit was built to get the job done.

Order Number. 190684

Sale Price: \$53.⁹⁵



4 Gallon Smith Multi-Use S2 Backpack

The Smith Multi-Use 4 Gallon "No Leak" internal pump backpack is designed with safety and comfort in mind. The internal pump technology eliminates chemicals dripping down the user's back. With premium components throughout, including a thick, adjustable harness with padded straps and chest strap, this sprayer is the workhorse that will get the job done.

Order Number. 190670

Sale Price: \$119.⁹⁵



Order Online www.propartsdirect.net | Original & Aftermarket Parts

Makita



Model XCU06SM1

POWER: Makita-built Outer Rotor BL™ Brushless Motor provides power of a 22cc gas chain saw

APPLICATIONS: Up to 175 cuts in 2x2 cedar with 18V LXT® 5.0Ah battery
SPEED: 20% faster than a 22cc gas engine chain saw

DESIGN: Compact top handle design ideal for pruning, trimming and limbing

INCLUDES: battery and charger, 14" Bar

PRICE: \$299.00



Model XCU09PT

POWER: Power equivalent to a 30cc gas chain saw

DESIGN: Top handle design built for the professional tree care industry delivers gas equivalent performance

INNOVATION: Torque boost mode powers through thick or hard branches

SPEED: Variable speed trigger and high chain speed (0-3,940 FPM) for improved cutting performance

INCLUDES: 2 ea. 18V LXT® 5.0Ah batteries and dual port rapid charger, 14" sprocket nose guide bar and 3/8 pitch, .043" gauge chain

PRICE: \$449.00

RULE THE OUTDOORS



Model XCU08PT

POWER: Power equivalent to a 30cc gas chain saw

DESIGN: Top handle design built for the professional tree care industry delivers gas equivalent performance

INNOVATION: Torque boost mode powers through thick or hard branches

SPEED: Variable speed trigger and high chain speed (0-3,940 FPM) for improved cutting performance

INCLUDES: 2 ea. 18V LXT® 5.0Ah batteries and dual port rapid charger, 16" sprocket nose guide bar and 3/8 pitch, .043" gauge chain

PRICE: \$449.00

Model XCU03PT

POWER: Makita-built Outer Rotor BL™ Brushless Motor delivers power of a 32cc gas chain saw

RUN TIME: Up to 380 cuts in 4 x 4 cedar with four 18V LXT® 5.0Ah batteries

DESIGN: "Tool-less" chain adjustment for convenient operation and maintenance

SPEED: Variable speed trigger and high chain speed (0-3,940 FPM) for improved cutting performance

INCLUDES: 4 ea. 18V LXT® 5.0Ah batteries and dual port rapid charger

PRICE: \$359.95

36V (18V X2) LXT® Brushless 9" Power Cutter Kit



Model XEC01PT1

POWER: The BL™ Brushless Motor powered by two 18V LXT® batteries eliminate the hassle of engine pull starts

CAPACITY: Makes single pass cuts up to 3-1/2" in various materials

CONTROL: AFT® turns the motor off if rotation of the wheel is suddenly forced to stop

DUST MANAGEMENT: Integrated water delivery continuously feeds water for OSHA Table 1 Compliance

INCLUDES: 4 ea. 18V LXT® 5.0Ah batteries, dual port rapid charger, diamond blade, cut-off wheel and socket wrench

PRICE: \$999.95

LXT® AND LXT® X2 (36v) PORTABLE BACKPACK POWER SUPPLY PDC01G6

CONVENIENCE: Backpack utilizes four Lithium-Ion batteries to provide longer run time for LXT® and LXT® X2 tools

RUN TIME: Provides up to 2X run time with LXT® X2 (36V) products and 4X run time with LXT® 18V products

DESIGN: L.E.D. battery charge indicator allows monitoring of charge on all four batteries individually

INCLUDES: Backpack Power Supply 18V X2 (36V) adapter (191J51-50)



PRICE: \$999.95

18V LXT® Lithium-Ion Brushless Cordless 24" Hedge Trimmer

XHU07T

PRICE: \$439.95



SPEED: BL™ Brushless Motor delivers up to 4,400 SPM for faster cutting
PERFORMANCE: 24" dual action double-sided shear blade provides optimal performance
COMFORT: 5-position rotating rear handle for increased comfort during vertical and angle trimming
PRODUCTIVITY: Reverse function for clearing jams
INCLUDES: 2 ea. 18V LXT® 5.0Ah batteries and rapid charger

18V LXT® Lithium-Ion Brushless Cordless 30" Hedge Trimmer

XHU08T

PRICE: \$449.95



CAPACITY: BL™ Brushless Motor delivers up to 4,400 SPM for faster cutting
COMFORT: 30" dual action double-sided shear blade provides increased cutting capacity
SPEED: 5-position rotating rear handle for increased comfort during vertical and angle trimming
CONTROL: Reverse function for clearing jams
INCLUDES: 2 ea. 18V LXT® 5.0Ah batteries and rapid charger

18-Volt LXT Lithium-Ion Brushless Cordless String Trimmer Kit

XRU12SM1

PRICE: \$209.95



3-speed control for power management
 Bump and feed trimmer head compatible with 0.080 in. or 0.095 in. line
 Reverse rotation system allows clearing trimmer head of entangled grass and weeds

36V (18V X2) LXT® Brushless String Trimmer Kit with 4 Batteries

XRU15PT1

PRICE: \$469.95



Makita-built Outer Rotor BL™ Brushless Motor provides high power and increased torque. Automatic Torque Drive Technology automatically shifts from 3,500-6,500 RPM for extended run time or added power

Call 800 305 9255 | Original & Aftermarket Parts

eXmark OEM Parts



Anti-Scalp Wheel

Used on Exmark / Toro Commercial Riders
Wheel Size: 5x2 3/4, Hub: 2 1/2" offset, Bore: 5/8

Order Number 1-603299

Price: \$19.99

2 Or More
\$17.99 ea.

Anti-Scalp Wheel

Alternative Part "Wheel Only"
Order Number 210-165

Price: \$10.95

2 Or More
\$8.98 ea.



Anti-Scalp Wheel

Alternative Part "Wheel Kit".
Includes: Wheel, Bolts, Spacer, Washer & Nut.

Order Number 210-169

Price: \$17.99

2 Or More
\$15.88 ea.

OEM Ultra-Vac Replacement Bags

Replacement bags with hard bottom. Does not include handle or frame

44 / 48 / 52" Bag

60" to 72" Bag



2 or more
\$70.95 ea.

Order Number : 116-3518
\$74.95 ea.



2 or more
\$70.95 ea.

Order Number : 116-0757
\$74.95 ea.

Replacement Bag Exmark

Rear Bag replaces Exmark 103-0431, 1-653566 and **116-0757**. This replacement bag is for the Exmark 2-bag and 3-bag rear rider catchers.

The bag is made with black polyester material and has a back plastic pan and closely resembles the OEM product



2 or more
\$54.95 ea.

Order Number : 16741
\$59.95 ea.

Exmark Catcher Parts

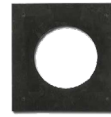


Rubber Hood Latch

Used on 44 / 48 / 52 Baggers

Order Number 1-653403

Price: \$64.99



Rubber Tube Seal

Used on 44 / 48 / 52 Baggers

Order Number 1-653561

Price: \$14.99



Plastic Hood Catch

Used on 44 / 48 / 52 Baggers

Order Number 1-653404

Price: \$29.99



Exmark Red Paint

12 oz. Can

Used on All Exmark Equipment

Order Number: 1-850337

Price: \$21.99

2 or more \$20.99

Motion Control Dampener

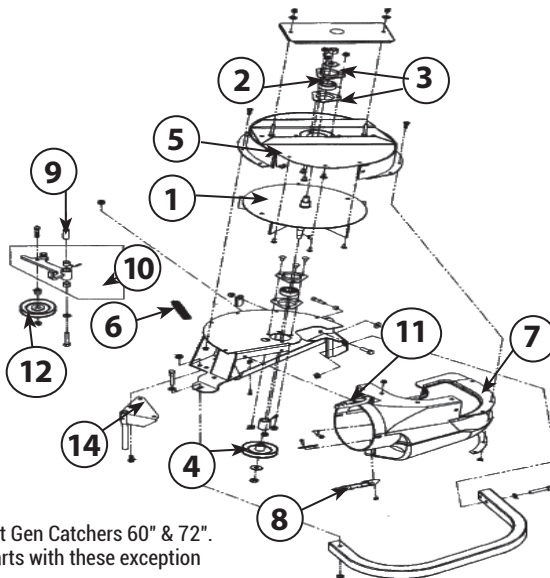
Used on Exmark / Toro Commercial Riders

Order Number 142-8117

Price: \$85.99



Exmark 60" & 72" Ultra-Vac Parts



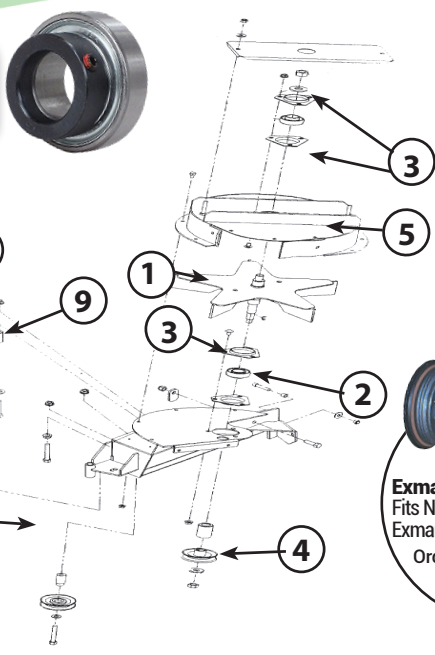
Newer Style Next Gen Catchers 60" & 72".
Use the same parts with these exception

7	Chute Blower	109-2954	\$263.99
8	Latch Grass catcher	103-2898	\$27.99
14	Wld, Mount Pin	1-353050	\$14.99

Ultra Vac Blower Assembly

#	Description	Order #	Price
1	Wld, Impeller	103-0455	\$369.95
2	Bearing, SPH. OD (2)	FH205-16	\$32.88 (2 for \$27.89 ea.)
3	Housing, Flange (4)	1-513013	\$4.49
4	Sheave, Blower	103-0456	\$44.99
5	Wld, Upper Housing	103-3593	\$453.99
6	Spring, Idler	1-653331	\$10.99
7	Chute, Blower	103-4759	\$305.99
8	Latch, Grass Catcher	1-353054	\$6.69
9	Bushing, Idler Pivot	1-603044	\$10.99
10	Assembly, Idler with Bushings, Zerk & decals	103-0448	\$129.99
11	Latch, Rubber	103-2898	\$27.99
12	Pulley, Idler	103-0483	\$44.99
13	Bearing	1-653600	\$17.99
14	Wld, Mount Pin	103-0445-03	\$57.99

Exmark / Toro
Fan Bearing
Replaces 1-653346
Order Number: FH205-16
Price: \$32.88 ea.
4+ \$27.89 ea.



Exmark / Toro Hydro Filter
Fits Newer Toro Riders,
Exmark Next Gen Series.
Order Number 117 0390
\$49.99

44" - 48" - 52" Ultra Vac LHP Blower Assembly			
#	Description	Order #	Price
1	Wld, Impeller	103-3815	\$248.95
2	Bearing, SPH. OD (2)	1-653346	\$57.99
3	Housing, Flange* (4)	1-513013	\$4.49
4	Sheave, Blower*	103-1047	\$65.99
5	Wld, Upper Housing	103-3589	\$535.99
6	Spring, Idler	1-653331	\$10.99
7	Bearing (2)	1-653600	\$17.99
8	Pulley, Idler	1-653322	\$54.99
9	Bushing, Idler Pivot	103-0130	\$14.99
10	Pulley, Idler	103-1103	\$57.99
11	Assembly, Idler W./ Bushings, Zerk & Decal	103-2876	\$137.99
12	Pin, Grass Catcher	1-353050	\$14.99

*Apply Mobil HTS grease (or a food-grade anti-seize) on bore of sheave and bearings

Exmark Ultra-Vac Belts



Order Number	Fits	Price	2 or More
1-653332-SL	44" Ultra-Vac	\$25.99	
1-653333-SL	48" Ultra-Vac	\$28.99	
103-0866-SL	50" Ultra-Vac	\$30.99	\$28.99
1-653438-SL	52" Ultra-Vac	\$30.99	\$28.99
109-9249-SL	56" Ultra-Vac	\$31.99	
103-0866-SL	60" Ultra-Vac	\$30.99	\$28.99
103-0867-SL	72" Ultra-Vac	\$28.99	\$26.49

Exmark Hydro Oil

Specially designed oil for extreme mowing conditions. Field tested & proven formula offers maximum protection in all conditions.



1 Quart Bottle
Order Number: 109 9828

Price . . . \$17.89
12 or more \$15.89 ea.

1 Gallon Bottle
Order Number:
116 1218

Price . . . \$52.99
6 or more \$49.95 ea.



Exmark OEM Oil
10W-50 Syn 1 Quart Bottle
Order Number: 126-4143
Price . . . \$12.59 ea.
12 or more \$11.00 ea.



20W-50 Syn 1 Quart Bottle
Order Number: 135 3949
Price . . . \$12.99 ea.
12 or more \$11.99 ea.



30/10W-50 Syn 1 Quart Bottle
Order Number: 126-4143
Price . . . \$12.59 ea.
12 or more \$11.99 ea.

Ultra-Vac Assemblies

Exmark	Order Number	Description	Sale Price
	103-0401	44-48" Ultra Vac	\$1,395.99
	103-0400	52" Ultra Vac	\$1,434.99
	109-1024	50-56 Ultra Vac	\$1,337.40
	109-1128	60" Triton Deck Vac	\$1,598.95
	103-2991	60" - 72" Ultra Cut Series Vac (Series 2)	\$1,374.95
	109-9832	48" - 52" Ultra Cut Series Vac (Series 4-6)	\$1,549.95
	109-9836	60" - 72" Ultra Cut Series Vac (Series 4-6)	\$1,469.95

Call 800 305 9255 | Original & Aftermarket Parts



WALKER

Original Walker Mower Parts

Don't See the Walker part you need? Call us at 800 305 9255.

Blower Parts

Order Number	Description	Price
7543-0	10.5 Blower Assembly W/O Tube Replaces 7543	\$573.86
7526	10.5 Blower Tube Order with 7543-0 If Needed	\$47.79
7544	10.5 Blower Assembly	\$583.39
5542-3	9 Blower Assembly	\$530.04
6542-0	Blower Assembly	\$511.64
7545	10.5 Blower Wheel	\$132.00
6545	10 Blower Wheel	\$143.00
5515-2	Elbow Delivery Spout	\$71.55
7239-1	Blower Pulley (Micro V)	\$39.51
5794-3	Discharge Chute W/Spring	\$85.59
8511-1	9.5 Delivery Chute w/ Clips	\$52.72
5268	Bearing V 2 Or More \$26.00 ea.	\$28.95
7794-1	Discharge Chute	\$105.03
7406-1	Handle Grip Red	\$2.52
8960-15	Ignition Switch W/ Key	\$27.16

Hydrostatic Drive Parts



Order Number	Description	Price
6243-2	Hydro Fan, CCW (Used with 5025)	\$6.49
5025	Hydrostatic Drive, CCW (700-052)	\$1079.95
6243-1	Hydro Fan, CW (Used with 5026)	\$6.49
5026	Hydro Static Drive, CW (700-051)	\$1079.95
6201	Oil Ring Seal	\$0.98
6233-1	Pinion Gear	\$46.42
7244	Hydro Pulley	\$48.24
5023-1	Rubber Bladder	\$16.26



Blower Drive Belts

Order Number	Description	Serial Number Range	Price
8230	Engine To PTO Belt	92-12717 and on	\$39.95
7248	Ground Drive Belt Micro V	96-24752 and on	\$16.95
7235	Ground Drive Belt	92-12717 to 96-24751	\$21.12
7234-2	Blower Belt Micro V	07-89388 and on	\$16.60
7234-1	Blower Belt	01-52900 to 07-89387	\$16.40
7234	Blower Belt (3VX280)	92-12717 to 01-52899	\$9.80
6250-1	Drive Belt (3VX370)	14-124884 and on	\$14.98
6250	Drive Belt (3VX375)	02-57832 to 14-124883	\$15.19
6231	Drive Belt (3VX355)	92-12717 to 02-57831	\$11.06



Order Online www.propartsdirect.net | Original & Aftermarket Parts

Deck & Catcher Parts

Order Number	Description	Price
5155-4	Gas Spring (10.0 Bushel Catcher)	\$18.97
5162-12	Roller Wheel 5" Poly	\$14.01
5162	Rubber Roller Wheel	\$12.18
7775-2	Hitch Pin / RH gold (#6)	\$4.08
7775-1	Hitch Pin / LH Silver (#6)	\$3.87
5052-1	LH Rotation (Aluminum Gearbox)	\$211.60
5029-14	Oil Seal, Gear Box (P007)	\$7.52
5740-2	Deck Pin Bushing 5/8	\$2.55



Walker Mower Paint

Walker Gloss Yellow
Used on all Walker
Equipment
12 oz Can

Order Number: 5866
Price : \$24.73



Walker Engine Oil

15W-50 Mobil One Oil
Synthetic Oil, 1 Qt

Order Number: 122377
Price : \$15.89

6 or more
Price : \$14.89 ea.



Walker Gearbox Lube

Walker Hydro Gear Oil SHC 630

Order Number: 6450-20
Price : \$33.00

5 Gallon Pail
Order Number: 110843
Price : \$299.95



Walker Gearbox Lube

Mobile Lube 80W-90 Gear Lube

Order Number: 102508
Price : \$12.89

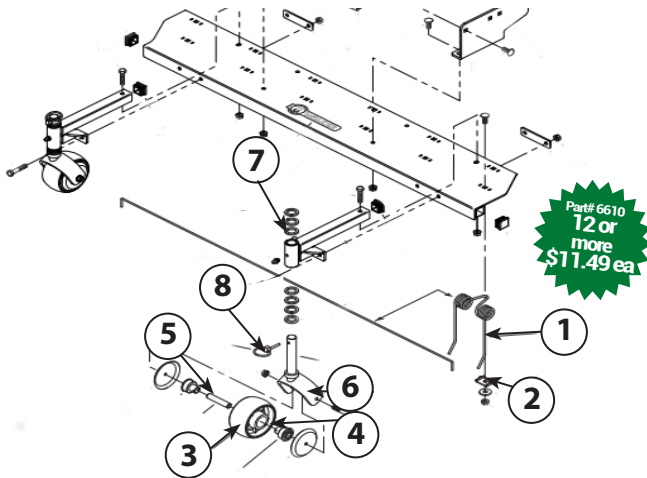


ROTARY BROOM 47 INCH

Order Number	Description	Each
I370	Wafer Brush Poly 18 Need 24	\$40.51
I370-1	Wafer Brush Steel Need 24	\$44.46
I362	100% Poly Broom Set 18"	\$699.78
I362-2	Brush Support	\$227.46



Dethatcher Parts



	Order Number	Description	Price
1	6610	Dethatching Tine	\$12.49 (12 OR MORE \$11.49 EA.)
2	6610-3	Tine Retainer Clip	\$3.33
3	6715-3	Roller Wheel Bearing	\$7.04
4	6715-2	Roller Wheel	\$7.00
5	6715-4	Axle Spacer Tube	\$12.36
6	6770	Caster Wheel Fork	\$43.61
7	6770-2	Spacer (1-1/8 x .765 x .125)	\$2.36
8	2775-1	Lynch Pin (3/16 x 1-1/4)	\$3.72

WALKER Reuseable Dump Bag



2 or more
\$69.99 ea.

Order Number 5598
9.5 cu. Catcher Bag. Nylon bag
Price \$73.17



2 or more
\$79.99 ea.

Order Number 5598-2
10.0 cu. Catcher Bag. Nylon bag
Price \$85.44

Walker Dethatcher

DT40A Dethatcher, Fits
all Walker mowers. 40"
Wide dethatcher.

Order Number: A10
Price : \$799.99

Wall Mount
Order Number 6606-11 \$79.95



Call 800 305 9255 | Original & Aftermarket Parts

WALKER Add-Ons

Comfort Seat

- Standard on T23, T27i & B23i
- Replaceable Covers
- Optional armrests
- Available for all tractors (Except Model H)
- Models T and D- 6104-8
- Models B, S, C -6104-9
- Model R - 6104-10
- Does not work with manual deck lift



6104-10 shown

6104-8 \$554.90 **6104-10 \$433.72**
6104-9 \$558.24

Standard Seat

- Standard on S, C, B18, B19 and R
- Large Contour molded seat
- Models S, B18 and B19 5103
- Models C 5103-3



5103 \$214.18
5103-3 \$239.99

Armrests

- Used for operator comfort and security
- Fold up when not in use
- Kit #5885 Fits Standard Seat
- Kit # 6104-6 Fits Comfort Seat



5885 \$125.19
6104-17 \$147.09

Headlights

- LED headlight with durable cast aluminum housing with 5 led lamps in each light
- Shock isolated mounting arm includes integral light guards
- 5989-14 Models
- 5989-13 Models B, C, H27i, H24d
- 7989-14 Models D & T
- 2989-12 Models H37i
- 5989-15 Models R



5989-13 \$340.57 **5989-14 \$236.06**
7989-14 \$401.56 **5989-15 \$254.13**
2989-12 \$142.70

Instrument Panel Cover

- Protects Model D & T panel when parked outdoors or trailered in rain or snow.



7307-2 \$109.80

Single Wide Tail Wheel

- Replaces standard dual tail wheel on Model T
- Not recommended for use on Model D or with Hi-Dump
- Great for a smooth cut look



8049 \$290.37

Dual Tail Wheel

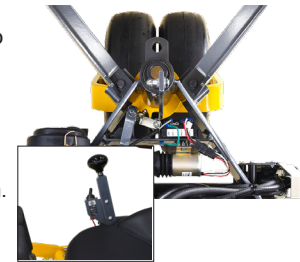
- Standard on Model T & D
- Two Independent tires
- Less turning resistance than single wide tail wheel.



7420-20 \$356.68

Tail Wheel Lock

- Locking solenoid locks tail wheel into straight ahead position for striping and hill side work
- Controlled from toggle switch on forward speed control
- Manual override is accomplished by deliberately turning in either direction.
- Available for Models D & T



8540 \$601.20

Spread Axle Tail Wheel

- Tail wheels on spread axle track behind drive tires and offer a smoother ride.
- Reduces maneuverability in tight spaces due to tail swinging out.
- Models C, D, T 7420-



Model D requires relocation kit 7420-8

7420-3 \$735.58
7420-8 \$79.58

Replaceable Wear Edge Kit

- Available on DC48 and DM52 decks
- Can be flipped over after being worn
- Can be replaced after both top and bottom edges are worn.
- Helps protect deck edges from curbs and walls.
- Each Kit includes 1 wear strip, 4 nuts and 4 bolts.
- For 48' Decks



7703-10 \$39.04



Adjustable Footrests

- Adjustable footrest clamps on carrier frame of 36", 42, 48, C52 and S74 decks.
- Not compatible with deck height adjuster
- 8662-10 - 36, 42, 48, C52
- 8662-9 - S74

8662-10 \$124.33
8662-9 \$92.36



Designed to fit any Walker mower. Mounts between Joystick. Easily retracts when deck is tilted up.

Cup Holder

Order Number: 5744-9
Price : \$59.95



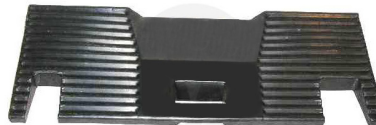
Breakaway Blades

- Blades mount on break-away hub
- For use in mowing applications with more exposure to ground contact and debris.
- Minimizes blade damage and impact and shock loading on deck and drive train



5705-33 42" Deck 7705-8 48" Deck
 5705-32 56" Deck 5705-34 74" Deck

5705-33 \$273.82 | **7705-8 \$275.58**
5705-32 \$389.52 | **5705-34 \$499.59**



Order Number: 5597
Price : \$278.84

Curb Jumper Ramp

Allows for Walker Mowers to Easily back over a standard curb for access to medians, parking areas and raised beds. Includes cut outs for deck height adjustment. Stows on Footrest

Order Number: 5597-1
Price : \$278.84

5597 Without Deck Height Adjuster
 5597-1 with Deck Height Adjuster

Deck Height Washers

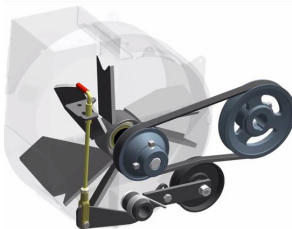
- Allows fine adjustment of cutting height
- Finer adjustment than 1/2" increments
- 5727-1 (36, 42, 48, 52 and 56 gear drive deck) 1/4" thick
- 8727 (52, 62 and 74 belt drive deck) 1/4" thick



5727-1 \$3.54 ea.
8727 \$4.54 ea.

GHS Blower Lockout

- Disengages GHS blower on Models C, T, and D
- The Blower Lockout disengages the grass handling system blower to reduce noise and increase power when using a side discharge deck, mulching deck or PTO-driven attachment. Disengaging the blower also prevents grass, snow, or debris from entering the grass catcher.



7541-1 \$59.51

Steering Lever Extensions

- Extend steering levers for easier reach
- This kit allows you to extend the length of the two steering levers, providing for easier reach and better maneuverability.



5453-13 \$34.98

No-Catch Deflector

- Installed on catcher Door to convert GHS models to "no collection" rear discharge mowing.
- 8500-2 - 9.5/10.0 Bushel catcher
- 7500-2 - 7.0 Bushel Catcher



8500-2 \$276.49
7500-2 \$232.59

GHS Exhaust Screen Large Holes

- Use in wet conditions to help prevent the GHS from clogging and to boost vacuum action.
- Easily interchanges with standard screen
- 7512-13 - for 7.0 Bushel
- 7512-11 - for 10.0 Bushel



7512-13 \$168.26
7512-11 \$161.62

Removable Bins

- Two molded boxes split the weight of the larger catchers when dumping.
- Useful for single operator
- Fits 9.5 & 10 Bushel catchers
- 8510-11 Set Of Bins
- 8510-9 Left Side, 8510-10 Right Side



8510-11 \$541.56
8510-9 \$234.92
8510-10 \$169.88

BUY NOW & PAY LATER

PROPARTS DIRECT GIVES YOU THE OPTION TO BUY THE PARTS YOU NEED NOW AND PAY OVER TIME WITH AFFIRM. CHOOSE AFFIRM AT CHECKOUT TO APPLY FOR FIXED MONTHLY PAYMENT OPTIONS THAT FIT ANY BUDGET. *SUBJECT TO ELIGIBILITY. PAYMENT OPTIONS THROUGH AFFIRM ARE PROVIDED BY THESE LENDING PARTNERS. AFFIRM.COM/LENDERS.

Call 800 305 9255 | Original & Aftermarket Parts



H12 SNOW BLOWER PARTS 42" WIDTH



Order Number	Description	Each
I125	 Skid Shoe w/Hardware	\$40.73
6625-8	 Cutting Edge 42"	\$125.25
I114	 Shear Bolt / Nut 5/16	\$6.31
I111	 Shear Pin w/ Lock Nut	\$6.14
I128	 Shear Bolt Bushing	\$4.20
I105	 Shear Pin w/ Lock Nut	\$5.80
I106	 Fan Bolt, 5/16-8 Grade 8	\$2.03
I200	 Gearbox	\$641.82
I102	 Fan Assembly	\$326.84
102508	 Mobil 80W-90 Gear Oil (1qt.)	\$12.89



H17 SNOW BLOWER PARTS 50" WIDTH



Order Number	Description	Each
I125	 Skid Shoe w/Hardware	\$40.73
6625-9	 Cutting Edge 50"	\$120.00
I114	 Shear Bolt / Nut 5/16	\$6.31
I105	 Shear Pin w/ Lock Nut	\$5.80
I106	 Fan Bolt, 5/16-8 Grade 8	\$2.03
I200	 Gearbox	\$641.82
I102	 Fan Assembly	\$326.84
I394	 Rotating Auger Decal	\$4.16
5800-9	 Walker round Decal	\$6.21
102508	 Mobil 80W-90 Gear Oil (1qt.)	\$12.89



46 INCH.

Order Number	Description	Each
6625-13	Cutting Edge w/ Hardware	\$83.10
I055	Skid Shoe	\$57.46
I056	Skid Shoe Pin	\$15.84
I057	Hair Pin	\$1.40



WALKER DOZER BLADES



48 INCH.

Order Number	Description	Each
6624-21	Cutting Edge w/ Hardware	\$115.00
6625-10	Polyurethane Wear Plate	\$248.25



60 INCH.

Order Number	Description	Each
6624-46	Cutting Edge	\$160.85
6625-11	Polyurethane Wear Plate	\$258.74
F420	Carriage Bolt Grade 8	\$1.18
F020	Nut, Grade 8	\$0.28



Order Online www.propartsdirect.net | Original & Aftermarket Parts




SNOWBLOWER TIRES CHAINS



**NEVER TOO EARLY TO
THINK FALL!**



HI-DUMP A21 10.0 CATCHER

Order Number	Description	Each
8070-12	 18 X 11-10 All Terrain Tire	\$262.81
2071-2	 23 x 10.5 - 12 Model H All Trail Tire	\$401.47
8070-31	 Wheel Spacer Plate	\$45.05
5675-1	 Walker Tire Chains 18 x 6.50 - 8	\$126.70
248	18 x 6.50 - 8 Tire Chains	\$79.99
5675-4	 Walker Tire Chains 18 x 8.50 - 8	\$134.54
250SP	18 x 8.50 - 8 Tire Chains	\$73.99
5675-5	 Walker Tire Chains 18x 9.50 - 8	\$182.27
5557	18 x 9.50 - 8 Tire Chains	\$104.19
5675-6	 Walker Tire Chains 22 x 10.5 - 12	\$247.40
5561	23 x 10.5 - 12 Tire Chains	\$117.70

Order Number	Description	Each
8404	 Dump Cylinder	\$444.37
8404-1	 Lift Cylinder	\$452.23
8403-19	 Hydraulic Power Unit	\$2,018.15
8845	 Rubber Bumper	\$6.92
6623-22	 Switch/SP	\$35.08
6623-21	 Switch/DP	\$47.32
8401-1	 Torsion Spring	\$36.52
8623-2	 Power Dump Cable	\$22.51
8623-3	 Extension Spring Cable	\$13.04

PA6685 PERFERATOR



Order Number	Description	Each
6681-1	 Perferator Tip (Uses 12)	\$36.76
6685	 Drive Chain #50x88	\$33.46
6685-6	 Cartridge Bearing	\$59.28
8769-6	 Bearing Cone	\$8.02

Call 800 305 9255 | Original & Aftermarket Parts

SCAG POWER EQUIPMENT

OEM PARTS



Scag Cup Holder

- Fits All Models
- Mounts on Side by Drive levers

Order Number 920W
Price \$68.00



Scag Blade Buddy

- Fits All Models
- Slides Over Blade, Stops Turning

Order Number 9212
Price \$49.00



Scag Flat Free Front Caster Tire & Wheel Assembly - Fits Fixed Deck W/B & STHM

Order Number 9275
Price \$89.00



Scag Flat Free Front Caster Tire & Wheel Assembly - Fits SWU, SWZU, SZC and SFZ

Order Number 9276
Price \$88.00



Scag Flat Free Front Caster Tire & Wheel Assembly - Fits V-Rides Size: 11 x 4.0

Order Number 921D
Price \$96.00

SCAG OEM OILS



Order Number	Description	Price
486257C	Chassis Grease	\$14.79
486258C	Spindle Grease	\$15.49
486254C	20W-50 Hydro 1 Gal	\$58.58
486255C	20W-50 Hydro 1 qt.	\$15.89
486256C	80W-90 Gear Lube	\$7.95

SCAG QUICK PARTS BY MOWER



Scag SW
Walk Behind

Order Number	Description	Price
48203	Transmission Belt	\$23.67
48202A	Wheel Belt	\$79.88
48278	32" Deck Belt	\$52.45
48089	36" Deck Belt	\$52.18
483518	48" Deck Belt	\$44.86
48087	36" RH Deck Belt	\$37.55
48285	48" RH Deck Belt	\$35.37



Scag
Tiger Cat II

Order Number	Description	Price
485648	52" Pump Drive Belt	\$41.58
485649	61" Pump Drive Belt	\$40.48
483241	48" Deck Drive Belt LH	\$56.06
483242	52" Deck Drive Belt LH	\$68.73
485845	61" Deck Drive Belt LH	\$80.81
483239	48" Deck Drive Belt RH	\$27.04
483240	52" Deck Drive Belt RH	\$29.44
483157	61" Deck Drive Belt RH	\$49.52
48462-01	Hydro Filter	\$22.88



Scag SWZ Hydro
Walk Behind

Order Number	Description	Price
48553	36" Pump Drive Belt	\$43.18
48553	48" Pump Drive Belt	\$43.18
48587	52" Pump Drive Belt	\$48.35
48587	61" Pump Drive Belt	\$48.35
48204	36" Deck Belt	\$34.83
48089	48" Deck Belt	\$52.18
483518	52" Deck Belt	\$44.86
48088	61" Deck Belt	\$59.41
48087	36" Deck Belt RH	\$59.41
48285	48" Deck Belt RH	\$35.37
48265	52" Deck Belt RH	\$34.46
48462-01	Hydro Filter	\$21.79



Scag Cheetah

Order Number	Description	Price
484372	Pump Drive Belt 48" / 52"	\$43.88
483316	Deck Belt 48"	\$28.89
482239	Deck Belt RH Side	\$31.63
483240	Deck Belt 52"	\$29.44
483165	Pump Drive Belt 61" / 72"	\$58.41
483741	Deck Belt 61"	\$69.71
483157	Deck Belt 61"	\$49.52
484088	Deck Belt 72"	\$92.45
484159	Deck Belt RH 72"	\$61.44
52114	Hydro Filter	\$16.95
71943	Hydro Filter	\$20.95



Scag SVR-V
Ride II

Order Number	Description	Price
485902	36" Pump Drive Belt	\$24.95
483520	48" Pump Drive Belt	\$20.14
483520	52" Pump Drive Belt	\$20.14
483520	61" Pump Drive Belt	\$20.14
486023	36" Deck Belt	\$61.13
483966	48" Deck Belt	\$74.03
484100	52" Deck Belt	\$80.23
485880	61" Deck Belt	\$85.76
48462-01	Hydro Filter	\$21.79



Scag Turf Tiger II

Order Number	Description	Price
485909	Pump Drive Belt	\$66.73
485928	Pump Drive Belt (Diesel)	\$68.54
482876	PTO Belt	\$23.93
482281	52" Deck Belt	\$58.70
481558	61" Deck Belt	\$82.57
481980	Deck Belt	\$92.91
48758	Hydro Filter	\$22.89



Order Online www.propartsdirect.net | Original & Aftermarket Parts



**WE HAVE AVAILABLE
100% OF THE PARTS!**



OEM Hurricane Blowers Parts for X3 and Z3 Stand-On Blowers. Hurricane was purchased by Briggs & Stratton last year and now Ferris and Billy Goat have versions of the stand-on blower. A lot of the part numbers are interchangeable. If you have the older Hurricane blower we have noted the old Hurricane part number and the new Ferris/Billy Goat part number.



Old Hurricane Part #	Billy Goat Reference	Order Number	Description	Each
106-17-3007	84001319	G5107037	Reversing Switch	\$42.50
101-17-5612	84001265	G5106950FS	Safety Switch	\$24.63
101-18-1802	84001267	G5106953FS	Left Deflector Motor	\$98.29
314-0618-255R	84001397	G5106952FS	Right Deflector Motor	\$98.29
0117-162024	84001260	G502154ISM	Plastic Bushing	\$10.28
ZP15017	84001573	G5106821	Drive Belt Z3	\$36.23
X3-A7227	84001546	G5107258	Drive Belt X3	\$52.89
425-1041-76010	84001471	G5107194	Throttle Choke cable Z3 & X3	\$31.64
425-103-174430	84001470	G5107193	Drive Dampener	\$57.72
16127	84001238	G5106923	Idler Spring Z3 & X3	\$11.11
17-4101	84001376	G5107103	Idler Pulley Engine to Drive	\$27.53
104-17-5608	84001302	G1714054	Ignition Key Set (2)	\$6.77
XP1745	84002320	G5106813	47.15 Raw Edge Belt	\$36.95
ZP1507	5106821	G5106821	Z3 Drive Belt	\$36.23
15128	84001203	G5106888	Extension Spring	\$3.38
104-17-5610		G5107021	Ignition Snap-In Switch	\$36.23
106-17-2806	5107034	G5107034	Switch Seal	\$14.73
106-17-2817		G5107035	Relay	\$20.04
ZP15027-5	84001578	G5107048	Caster Tire	\$113.85
314-17-4101	84001440	G5107103	Idler Pulley 3 ID, .506 ID	\$27.53
17-4103		G5107166	Mule Drive Pulley	\$33.35
X3-A7227		G5107258	Belt Drive, Kohler Motor	\$52.89
X310-2042		G5107339AAFS	Universal Deflector Gear	\$54.34
ZP173007		G5601265	JoyStick Assm	\$303.36



The Impellers for Hurricane blowers have changed now that Billy Goat owns the company. You will have to measure your crankshaft to get the right one.

Used on certain Hurricane X3
Fits 1-7/16 Crankshaft
Replaces X3-1637
Billy Goat 84001746
Order Number G5107448
Price \$788.34



Used on Hurricane Z3
2015 to Current
Replaces ZF15018
Order Number G5419590
Price \$582.12



NOTE: G5107503
Impeller for X3 2014 to 2016
Replaces X310-203727
If Crankshaft is 1-7/16 use part
G5107448. If Crankshaft is 1-1/8.
Use Crank upgrade kit G5107259
(X3-CH70) and pulley G5107063

Call 800 305 9255 | Original & Aftermarket Parts



Nozzle Parts

Order Number	Description	Price
485691	Switch Plunger, Double Pole Nozzle Limit	\$10.37
486353	Nozzle Direction Switch	\$82.66
486671	Gear Drive Motor	\$142.78
486811	Nozzel Control Module	\$85.56
486838	Control Cable Air Direction (Replaces 486276)	\$90.89



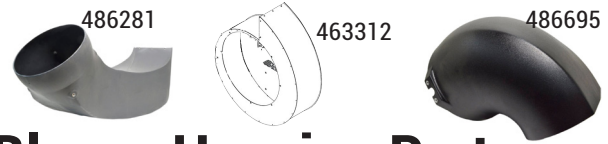
Hydro Drive Parts

Order Number	Description	Price
481164	Hydro Tank Cap	\$16.15
48462-01	Hydro Filter	\$22.88
485788	Wheel Motor, SVRII	\$873.65
04063-25	Woodruff Key 5/16-1"	\$2.80
04021-19	Center Lock Nut 1/2-13	\$0.37
486265	Clutch GT3.5	\$605.47
483112	SMZC Deck Drive Spring	\$13.04
486322	Pump Drive Belt	\$28.22
483213	Pulley, 4.5 Dia Idler	\$47.25



Electrical Parts

Order Number	Description	Price
484721	Tiger Eye, Cluster Gauge	\$336.45
485833	Switch, PTO Sealed	\$42.35
462069	Key Assy W/Fob	\$8.24
481182	Indicator Light (EFI Models Only)	\$42.23
48798	Key Switch	\$24.30
481637	N/O Switch	\$8.68
48717	Switch	\$8.93
486265	Clutch w/Tag GT3.5	\$605.47
486139	Wire Harness Adapter	\$22.20



Blower Housing Parts

Order Number	Description	Price
463312	Blower Housing w Decals	\$752.05
486281	Outlet Adapter, Impellar Housing	\$268.60
486695	Outlet Adapter, Nozzle Housing	\$189.95
485691	Plunger Switch, Double Pole	\$10.89
486671	Gear Drive Motor	\$142.78
9278	Caster Wheel	\$154.35



Fuel System Parts

Order Number	Description	Price
484246	Fuel Gauge Assy, 16-1/2	\$78.54
484286	Fuel Cap Tethered	\$48.04
484342	Carbon Cannister, 550cc	\$91.06
486670	Muffler	\$153.20



Gearbox Parts

Order Number	Description	Price
486324	Gearbox Output Belt	\$55.74
486265	Clutch, GT3.5	\$605.47
486323	Gearbox Input Belt	\$68.63
HG70525	Seal Kit	\$35.57



TURF STORM SPRAYER

Model STS60-21BV



486097

486090



486186

Boom Arm Parts

Order Number	Description	Price
486150	Boom Arm Spring	\$33.36
463152	Nozzle Assembly RH	\$44.04
486699	Nozzle Assembly Main	\$44.04
463151	Nozzle Assembly LH	\$44.04
486557	Nozzle Strainer #50 Mesh	\$2.98
486100-01	Nozzle Tip	\$18.62
486098	Nozzle Cap	\$2.22
486097	Nozzle Body, Single LH	\$23.70
486700	Nozzle Body, Single RH	\$16.96
486090	12V Electric Pump	\$372.96
486186	Screen	\$56.99

486109



462999



482639

Body Parts

Order Number	Description	Price
486340	Grease Cap	\$11.94
481657-01	Cone Bearing	\$2.87
486109	Caster Wheel Assy, 16x6.50x8	\$203.62
484243	Fuel Gauge	\$72.15
484286	Tethered Fuel Cap	\$45.75
486470	Muffler, 21 HP BV	\$196.99
462999	Wheel Hub Assy	\$98.24
482639	Wheel Motor	\$980.90
48462-01	Oil Filter	\$21.79
486111	Pump Drive Belt	\$28.35
48680	Castle Nut	\$15.25
484754	Spring	\$16.46



486381



486544



486351

Hopper Parts

Order Number	Description	Price
486381	220 lb Hopper Cover	\$94.11
486390	Hopper Gate Cable	\$219.67
486439	Side Deflector Cable	\$217.88
486544	Pattern Adjust Cable	\$255.83
486373	Milled Dial	\$12.29
486541	Door Assist Spring	\$8.60
486440	Electric Motor Gear	\$496.39
486351	Impeller	\$60.27
486389	Rocker Switch	\$16.41
486455	Motor Controller	\$518.94



486389



462069



486621

Electrical

Order Number	Description	Price
483473	Double Pole Plunger Switch	\$14.97
462069	Key Assy w / Fob	\$8.24
486389	Rocker Switch	\$16.41
486621	Trail Tech Display	\$323.99



Grease & Oils

Order Number	Description	Price
486257	Chassis Grease	\$14.79
486258	Spindle Grease	\$15.49
486254	20W-50 Oil Gallon	\$58.58
486255	20W-50 Oil Quart	\$15.89



9612

Kits & Accessories

Order Number	Description	Price
9612	SGSTS Foamer	\$1,157.00
9613	SGSTS Light Kit	\$227.00
9614	SGSTS 7 GPM Pump	\$444.00
9616	SGTST Rear Tray	\$69.00
9617	SGSTS Weight Kit	\$211.00

Call 800 305 9255 | Original & Aftermarket Parts



Z-Spray Max



Popular replacement Parts for Current and older Models

Be sure to check your serial number before ordering.
Part below for models 2018 and newer



Z-Spray Intermediate

Key Switch	135-6052	\$22.99
Hour Meter	135-5259	\$36.99
Striker Head Only	135-8900	\$139.99
Operation Switch	135-6121	\$51.99
Muffler	135-5685	\$250.99
Belt	135-5664	\$34.99
Throttle Cable	135-5260	\$35.99
Choke Cable	135-5707	\$35.99
Fuel tank / Cap	135-7172	\$179.99
Large Hopper cover	135-7981	\$48.39
Hopper	135-5985	\$308.99
Dial	126-0988	\$7.95
Cable Push/Pull	135-5931	\$41.99
Hose Reel	135-5787	\$307.99
Spot Spray Gun	135-5773	\$50.99
Left tank Asm	135-5917	\$356.99
Hydraulic Filter	142-3049	\$33.99
Tandem Pump	135-5665	\$1,379.99
RH Wheel Motor	135-5231	\$530.99
LH Wheel Motor	135-5230	\$530.99
Chrome Valve	135-5760	\$22.99
5.0 GPM Pump	142-3321	\$281.99
Caster Locking cable	135-5644	\$79.99
Foot Plate Spring	135-5654	\$14.99
Directional Valve	135-5721	\$62.63
Gauge	142-3437	\$26.99
Hose Barb	120-8671	\$1.89
Body Nozzle Left	135-5788	\$8.99
Body Nozzle Center	135-5789	\$8.99
Body Nozzle Right	135-5790	\$8.99
RT Tank Asm	135-5918	\$356.99
Spray Tank cap	135-5916	\$7.79
Front Caster Wheel & Tire	135-5974	\$126.99
Cone Bearing	1-633585	\$17.99
Seal	103-0063	\$7.79
LH Caster Fork	135-5441-05	\$152.99
RH Caster Fork	135-5446-05	\$152.99
Fork Cone Bearing	254-92	\$14.50
Grease Seal	1-543511	\$10.59
Dust Cap rubber	135-5756	\$2.19
Solenoid	135-6189	\$27.89



Nozzle Left	135-5788	\$8.99
Nozzle Right	135-5790	\$8.99
Hour Meter	135-5259	\$36.99
Key Switch	135-6052	\$22.89
Rocker Switch	100-8469	\$21.01
Striker Head Only	135-8900	\$139.99
Operators Switch	135-6121	\$51.99
Solenoid	135-6189	\$27.89
Muffler	135-5685	\$250.99
Belt	135-5664	\$34.99
Throttle Cable	135-5260	\$35.99
Choke Cable	135-5707	\$35.99
Fuel Tank Asm / W Cap	135-7172	\$179.99
Large Hopper Cover	135-7981	\$48.39
Hopper	135-5985	\$308.99
Dial (126-0988)	142-3319	\$2.19
Dial Mount	126-0985	\$3.48
Spinner (135-5954)	142-3506	\$32.99
Push /Pull Cable	135-5931	\$41.99
Push/Pull Cable	135-5935	\$83.99
Hose Reel	135-5787	\$307.99
LT Tank Asm	135-5993	\$299.99
Tank Cap	135-5916	\$7.79
Spot Spray Gun	135-5773	\$50.99
LH Wheel Motor	135-5230	\$530.99
RH Wheel Motor	135-5231	\$530.99
Tandem Pump	135-5665	\$1,379.99
Hydraulic Filter	142-3049	\$33.49
5.0 GPM Pump	142-3321	\$281.99
Chrome Valve	135-5760	\$22.99
Caster Locking Cable	135-5644	\$79.99
Directional Valve	135-5721	\$53.04
Gauge	142-3437	\$26.99
Hose Barb	120-8671	\$1.89
RH Tank Asm	135-5995	\$299.99
Strainer	135-5765	\$20.99
Caster Wheel & Tire (135-5974)	142-5509	\$126.99
Wheel Cone Bearing	1-633585	\$17.99
Seal	103-0063	\$7.79
LH Caster Fork	135-5441-05	\$152.99
RH Caster Fork	135-5446-05	\$152.99

Z-Spray Parts are Now In-stock for MAX , Intermediate and Junior Models. For models 2017 and older give us a call or visit our website.



**The Fastest Moving Parts!
Don't See What you need?
Give us a call
800 305 9255**



Z-Spray Junior

Nozzle Left	135-5788	\$8.99
Nozzle Right	135-5790	\$8.99
Hour Meter	135-5259	\$36.99
Key Switch	135-6052	\$22.99
Rocker Switch	100-8469	\$21.01
Striker Head Only	135-8900	\$139.99
Operators Switch	135-6121	\$51.99
Solenoid	135-6189	\$27.99
Muffler	135-5685	\$250.99
Belt	135-5664	\$34.99
Throttle Cable	135-5260	\$35.99
Choke Cable	135-5707	\$35.99
Fuel Tank Asm / W Cap	135-7172	\$179.99
Large Hopper Cover	135-7981	\$48.99
Hopper 150lb	135-6010	\$268.99
Dial	126-0988	\$7.95
Dial Mount (126-0985)	142-3319	\$2.19
Spinner (135-5954)	142-3506	\$32.99
Push /Pull Cable	135-5931	\$41.99
Push/Pull Cable	135-5935	\$83.99
Hose Reel	135-5787	\$307.99
LT Tank Asm	135-5993	\$299.99
Tank Cap	135-5916	\$7.79
Spot Spray Gun	135-5773	\$50.99
LH Wheel Motor	135-5230	\$530.99
RH Wheel Motor	135-5231	\$530.99
Tandem Pump	135-5665	\$1,379.99
Hydraulic Filter	142-3049	\$33.49
5.0 GPM Pump	142-3321	\$281.99
Chrome Valve	135-5760	\$22.99
Caster Locking Cable	135-5644	\$79.99
Directional Valve	135-5721	\$62.63
Gauge	142-3437	\$26.99
Hose Barb	120-8671	\$1.89
RH Tank Asm	135-5995	\$299.99
Strainer	135-5765	\$20.99
Caster Wheel & Tire	142-5509	\$126.99
Wheel Cone Bearing	1-633585	\$17.99
Seal	103-0063	\$7.79
LH Caster Fork	135-5441-05	\$152.99
RH Caster Fork	135-5446-05	\$152.99



Z-Spray LTS

Manifold Valve Control	135-6362	\$361.99
Ignition Switch	126-6285	\$38.99
Rocker Switch	100-1535	\$72.45
Safety Switch	82-2190	\$12.99
Throttle Control	135-3149	\$37.99
Push/Pull Cable	135-3150	\$30.99
Transaxle	126-2814	\$1,667.99
7 Inch Fan	126-2980	\$16.99
Center Knee Pad	142-2751	\$68.99
Left Nozzle Asm	126-3667	\$64.99
Right Nozzle Asm	126-3669	\$64.99
Frame Bearing	126-3008	\$17.99

Side Deflector (126-1217)	142-3619	\$54.99
3.8 Gpm Pump	142-2301	\$399.99
Hopper Screen Small	126-3242	\$180.99
Spreader Motor	126-6231	\$503.99
Water Cap	126-0285	\$16.99
Front Axle	126-6733	\$252.99
Wheel & Tire Asm	142-2736	\$132.99
Wheel Bearing	116-0720	\$18.99
Motion Cable	126-2169	\$162.99
Rod End Steering	126-7181	\$60.99
Rod End LH	126-7182	\$60.99
Strainer	126-4374	\$48.99

Check Us Out online for Calibration specs, older manuals and Installation Instructions on Tanks and Kits!

Z-Spray Aerator



Hydraulic Filter	142-3049	\$33.49
Choke Cable	135-5707	\$35.99
Hour Meter	135-5259	\$36.99
Key Switch	135-7094	\$27.99
Striker Head	135-8900	\$139.99
Muffler	135-9252	\$141.99
RH Pump	135-9026	\$706.99
LH Pump	135-9024	\$776.99
LH Caster Fork	142-0300-05	\$143.99
Wheel & Tire	135-8615	\$78.13
Axle - Screw	135-6300	\$10.99
RH Caster Fork	142-0301-05	\$143.99
Drive Belt	135-9075	\$55.99

Reel Tine	135-9387-05	\$159.99
Tine Coring	126-2143	\$9.99
Pillow Block Bearing	135-9379	\$20.99
Caster Locking Cable	135-8632	\$97.99
Lift Cylinder	135-9157	\$239.99

Spray Tips

Mixing of liquid or dry product should be in accordance to manufactureres labels. Remember that the Z-Spray is designed for low volume spraying so the mix will be more concentrated.



Green Tip 1/5 Spray Tip Order Number: 135-8285 Price: \$20.99	Yellow Tip 1/4 Spray Tip Order Number: 142-3307 Price: \$20.99	Violet Tip 1/3 Spray Tip Order Number: 142-3308 Price: \$18.99	Blue Tip 2/5 Spray Tip Order Number: 135-8283 Price: \$16.32	Red Tip 1/2 Spray Tip Order Number: 142-3310 Price: \$15.99	Brown Tip 3/4 Spray Tip Order Number: 135-8284 Price: \$19.99
--	---	---	---	--	--

Call 800 305 9255 | Original & Aftermarket Parts





WRIGHT WHEEL MOTORS

Can be model specific. Please verify with serial number before ordering.



Order Number	Description	Used On	Price	Order Number	Description	Used On	Price
32410001	Hydro Motor MF 1606	WS	\$720.69	32410010	Hydro Motor P Bearing Kit	WS32, WS36	\$182.69
32410002	Hydro Motor MF 1409	WS	\$911.99	32410011	Hydro Motor 15H HGM	WSZK	\$1,102.99
32410003	Hydro Motor 1209	WS, WSE	\$899.99	32410012	Hydro Motor 15H HGM	WSZK	\$1,102.99
32410004	Hydro Motor 12P	WS32, WS36	\$699.00	32410013	Hydro Motor P Seal Kit	WS32, WS36	\$191.99
32410005	Hydro Motor 15E	WSE, WSZK, WZ	\$1,078.99	32410018	Hydro Motor E Seal Kit		\$191.99
32410007	Hydro Motor	WS	\$629.00	32410022	Hydro Motor 12P		\$759.99
32410009	Hydro Motor P Seal K		\$191.99	32410023	Hydro Motor 15P		\$769.99

2 Or More
\$20.00 ea.



\$22.95 EACH

Order Number 34490002
Used on Wright Mowers



\$23.99 EACH

Order Number 39410007
Used on Wright B mowers & ZXL mowers. For ZT-3400

POPULAR WRIGHT MOWER PARTS





As Needed per Bulletin SVC-TSB-0115

Order Number	Description	Price	Order Number	Description	Price	Order Number	Description	Price
71410001	Electric Clutch	\$475.99	71460136	Spindle	\$249.95	95460028	Spindle Kit	\$36.99





Used on WSE48/52/61/36/42 Mowers WRIGHT OEM PAINT Used on WS32 /WS36 Mowers

Order Number	Description	Price	Order Number	Description	Price	Order Number	Description	Price
71460207	Spindle	\$249.99	93990003	Wright Paint	\$25.99	52410003	Safety Switch	\$14.99





Used on WS32 /WS36 Mowers

Order Number	Description	Price	Order Number	Description	Price	Order Number	Description	Price
71460004	Spindle Pulley	\$90.99	53490019	Relay	\$16.99	71460006	Idle Pulley	\$38.84





Used on WS32 Fixed Deck

Order Number	Description	Price	Order Number	Description	Price	Order Number	Description	Price
72490003	Wheel Plastic	\$18.89	14990003	Bronze Bushing	\$15.99	14990001	Pivot Bushing	\$12.59





Order Number	Description	Price	Order Number	Description	Price	Order Number	Description	Price
18410012	Knob Plastic	\$9.99	17460023	Dust Cap	\$8.99	71460009	Idle Pulley	\$42.99





Used on WVG/WVH Models

Order Number	Description	Price	Order Number	Description	Price	Order Number	Description	Price
52420002	Throttle	\$31.49	52420003	Blade Switch	\$34.64	71460131	Spindle	\$237.99



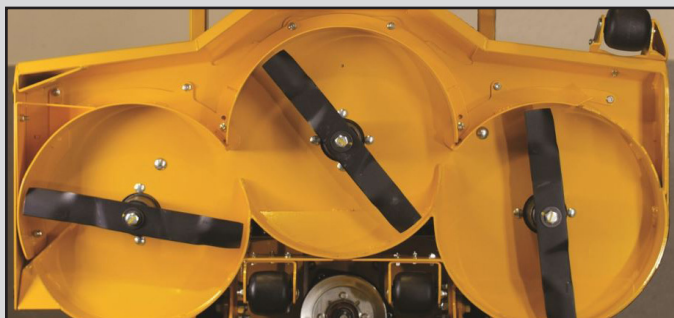
Wright Commercial Mower Belts

Order Number	Price
71460001	\$45.99
71460002	\$51.99
71460003	\$69.99
71460010	\$50.99
71460011	\$64.99
71460012	\$56.99
71460013	\$75.99
71460034	\$51.99
71460040	\$98.99
71460062	\$65.99
71460063	\$62.99
71460064	\$58.99
71460065	\$53.99
71460066	\$49.99
71460067	\$59.99
71460070	\$49.99
71460071	\$93.99
71460087	\$91.99
71460095	\$40.99

NORTHERN GRASS BAFFLE KIT

Description	Order Number	Price
52" Baffle Kit	98440015	\$349.99
62" Baffle Kit	98450014	\$359.99

Wright Mulch Kits



Mulch kits are a great alternative to collecting clippings and leaves. The recirculating baffles break down clippings into small and easily biodegradable pieces.

Deck Size	Aero Core Deck	Price	Reg 5" Deck	Price	
32	95460029	\$329.99	95480003	\$329.99	
36	95480005	\$329.99	95470002	\$329.99	
42	95480006	\$329.99	95480002	\$329.99	
48	95430009	\$349.99	95430003	\$349.99	
52	95440011	\$389.99	95440003	\$349.99	
61	95450011	\$359.99	95450003	\$359.99	
72	98460069	\$379.99	98460069	\$379.99	
Stander B					
32	95460030	\$329.99	48	95430009	\$349.99
36	95460031	\$329.99	52	95440011	\$389.99



Add-ons and Accessories

MICHELIN® TWEEL TIRE



The Newest in Tire Innovation. Leaves a light foot print and last **10x** longer than regular tires.

Mower	Size	Order Number	Price
Stander I / Sport I	18.5	72410097	\$449.00
Stander X / Sport X	18.5	72410097	\$449.00
ZK 61" & 72"	24	72410098	\$629.95
ZK 52"	24	72410110	\$689.00
ZXT 52"	26	72410103	\$699.95
ZXT 61" & 72"	26	72410104	\$729.95
ZK 72"	Dual Tweel	95410048	\$2,999.00
ZXT 72"	Dual Tweel	95410050	\$3,599.00
ZK 72"	Dual Wheel	95410045	\$1,300.00
ZXT 72"	Dual Wheel	95410051	\$1,500.00



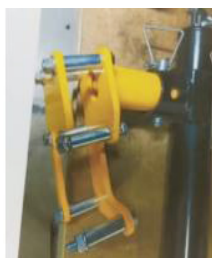
Trimmer Holder

- Fits All Wright Stander Models
- Mounts trimmer right on mower
- Good for single Operator

Order Number

98470106

Price \$99.95 ea.



Jack Socket Bracket

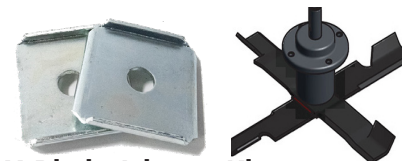
- Fits All Wright Models
- Allows For jack to be mounted to front of mower

Order Number

95410047

Price \$99.00 ea.

* Does not include jack



X-Blade Adapter Kit

* spindle not included

- Fits All Wright Models
- Allows dual blades and creates finer clippings

Package of 2

Package of 3

Order Number XB2-5/8

Order Number XB3-5/8

Price \$21.49 ea.

Price \$31.49 ea.



ZK ADD-ONS

Add-ons for the Stander ZK

Description	Order Number	Price
ZK Tractor Weight kit, 100 lbs	95410044	\$486.99
Dual Wheel Kit	95410045	\$1,300.00



STANDER B ADD-ONS

Add-ons for the Stander B

Description	Order Number	Price
Bag Kit	95490020	\$129.99
Stripe Kit	98460074	\$119.95

ADDITIONAL PARTS

Additional parts for servicing and other accessories



12 or More
\$16.89 ea.
36490013

Description	Order Number	Price
Hydro Filter	34490002	\$22.95
15W-50 Hydro Oil	36490013	\$17.89
Easy on / Off Block Plate	93460215	\$105.99
Fire Extinguisher Bracket	98490021	\$89.99
Light Bar Bracket*	98490023	\$49.00

* Light bar not included



COLLECTION BAG

Nylon Mesh Trash Collections bags

Description	Order Number	Price
Stander X / WSTX/WSLG	95490014	\$129.99
Stander I / WSTN / WSS	95490015	\$129.99
Velke HC / WVLC/WVGC	95490016	\$129.99
WSZK	95490017	\$129.99

Call 800 305 9255 | Original & Aftermarket Parts



Dingo Compact Utility Loaders

Dingo Tracks



Order Number	Description	Price
136-5847	Track - STD Tread - Fits TX222, TX320 and TX420	\$595.00
108-5640	Narrow Track - Aggressive tread - Fits TX222, TX220, TX320, TX420	\$759.95
136-5848	Wide Track - Fits TX425, TX525 and TX427	\$749.95
112-4816	Rubber Track - Fits TRX15, TRX19, TRX16, TRX20	\$495.00
136-5845	Wide Track - Fits TX-1000	\$869.95
136-5846	Narrow Track - Fits TX-1000	\$699.95
110-0069	Track Alignment Tool	\$299.95
108-9749	Aggressive Wide Track Fits TX425 & TX525	\$869.95
138-0804	Narrow Track For TX-1000 (22327, 22351) Sprocket Driven	\$899.95

NEW THIS YEAR! Dingo Track Alternatives

Due to limited supply on Tracks from Toro, we sourced a quality track that can replace a few Toro Dingo tracks. This high quality track is also used on machines from Bobcat, Cat and New Holland.

Order Number	Description	Price
153X28X89SNX	Replaces 136-5847	\$319.95
240X28X87.63SNX	Replaces 136-5848	\$479.95
240X37X87.63SNX	Replaces 136-5845	\$549.95
152X22X89SNX	Replaces 112-4816	\$279.95

Quick Attach Plate Order Number: 132-8418 Price: \$1,249.95

Toro Dingo Quick Attach Plate. Used to mount attachments to all Dingos.



Dingo Track Parts



Order Number	Description	Price
138-0782	Narrow Track Road Wheel Includes Bearing, Seal, Snap Ring and Cap	\$49.95
106-7620	Narrow Track Road Wheel - Includes Bearing	\$50.95
120-5378	Dingo Bearing For 106-7620 & 106-7621 Wheel	\$12.95
105-0248	Wide Track Road Wheel Kit Includes Bearing, Seal, Snap Ring and Cap	\$78.00
117-1310-03-OP	Guide Track Kit - Fits Models 22321, 22323, 22342	\$430.00
104-6123	Wheel Tensioner Assembly- Fits 22334, 22322, 22320 and 22307	\$325.00
138-1421	Road Wheel Asm, Fits TX-1000 Replaces 125-0431	\$249.95



Order Number	Description	Price
63-8300	Spin On Diesel Fuel / Water Filter	\$26.95
115-8189	Filter	\$12.99
99-3198	Inner Filter	\$35.79
99-3173	Air Filter	\$36.39
115-5304	Gas Cap	\$22.98
104-7418	Gas Cap	\$29.88
100-1854	Glow Plug	\$58.49

Dingo Filter Kits

TX427 Models 22321 & 22322

50 / 200 Hour Kit
Includes:
Air Filter 108-3811
Engine Oil Filter 115-8189
Hydro Filter 86-3010
Order Number 136-4774
Price: \$38.00



TX525 Models 22323 & 22324

50 Hour Kit
Includes:
Air Filter 108-3811
Engine Oil Filter 115-8189
Order Number 136-4772
Price: \$30.39



TX525 Models 22323 & 22324

200 Hour Kit
Includes:
Air Filter 108-3811
Engine Oil Filter 115-8189
Hydro Filter 86-3010
Inline Filter 112-7836
Fuel Spin-on 63-8300
Order Number 136-4773
Price: \$77.27



TX1000 Models 22327 & 22328

200 Hour Kit
Includes:
Air Filter 108-3811
Engine Oil Filter 104-5169
Hydro Filter 86-3010
Inline Filter 112-7836
Fuel Spin-on 63-8300
Order Number 136-4771
Price: \$76.95



TX1000 Models 22327 & 22328

50 Hour Kit
Includes:
Air Filter 108-3811
Engine Oil Filter 104-5169
Order Number 136-4770
Price: \$30.19



TRX-26 STX Models 22974 & 23208

50 Hour Kit
Includes:
Air Filter 119-5944
Engine Oil Filter 119-5852
Order Number 137-3816
Price: \$44.20



TRX-16 & 20 Models 22972 & 22973

50 Hour Kit
Includes:
Air Filter 120-7448
Engine Oil Filter 119-5852
Order Number 137-3815
Price: \$40.35



affirm
BUY NOW & PAY LATER
PROPARTS DIRECT GIVES YOU THE OPTION TO BUY THE PARTS YOU NEED NOW AND PAY OVER TIME WITH AFFIRM.
CHOOSE AFFIRM AT CHECKOUT TO APPLY FOR FIXED MONTHLY PAYMENT OPTIONS THAT FIT ANY BUDGET.
*SUBJECT TO ELIGIBILITY. PAYMENT OPTIONS THROUGH AFFIRM ARE PROVIDED BY THESE LENDING PARTNERS.
AFFIRM.COM/LENDERS.



Order Online www.propartsdirect.net | Original & Aftermarket Parts



TORO Dingo Compact Utility Loaders

Mufflers

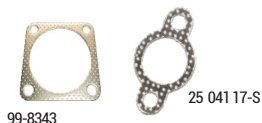
Order Number	Description	Price
105-0249	Muffler Fits TX420, TX425 and TX427	\$389.95
105-8381	Muffler Fits TX222, TX322, TX220, TX323, TX525N	\$297.28
117-1828	Muffler Fits TX320-D Model 22303	\$349.95
98-2759	Muffler Fits TX420 model 22306	\$539.95
106-9584	Muffler Fits TX525	\$399.95
99-8343	Muffler Gasket Fits TX220 and TX 525	\$7.03
25 041 17-S	Muffler Gasket Fits TX 222, 322, 420, 425, 413, 220, 323	\$2.15
138-0753	Diesel Muffler Fits TX-1000 Models 22327 & 22328	\$332.61
98-2761	Manifold Cross over	\$119.53
2112-11	Clamp	\$5.63



**OEM
Wheel
Motors**

DINGO WHEEL MOTORS

Order Number	Description	Price
98-2767	Wheel Motor Fits 22306 & 22307 (200000-2400003000)	\$1,499.95
106-7654	Wheel Motor Fits TX 420, TX-425, TX-525, TX-427 (240000301 & up)	\$1,539.95
114-1756	Wheel Motor 22307, 22320, 22322 & 22324 (2007 & up)	\$1,699.95
104-8470	Wheel Motor 22308, 22330, 22970, 22971, 22972, 22793, 22974 / TRX(2400000 and up)	\$1,658.49
99-3052	Wheel Motor Fits 22303, 22304, 22305, 22311, 22312, 22317, 22318, 22336, 22337 (2100000 and Up)	\$1,449.95
138-0778	Right Side Fits TX-1000 Models 22327, 22328, 22328HD	\$1,225.95
138-0761	Left Side Fits TX-1000 Models 22327, 22328	\$1,225.95



Trencher Nose Sprocket

Roller Assembly - Includes Roller Nose and Bearings
Order Number 107-9325
Price: \$338.00

Auger Teeth 6" to 30" Augers

Order Number	Description	Price
104-5998	Tooth Wisdom	\$348.82
107-9314	Pilot Auger	\$64.95
104-5996	Carbide Tooth (W)	\$47.77
107-9312	Inner Tooth	\$16.21
104-5997	Chisel Tooth	\$45.51
107-9313	Outer Tooth	\$18.78

ROTARY BROOM BRUSHES



Order Number	Description	Order Price
94-7372	Poly Brush Element	\$28.77
95-5942	Wire Brush Element	\$40.93

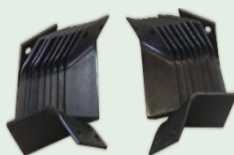


Aerator Tine Pack Kit

Includes: 24 tines 126-2143
Fits models:
23515 21" Single Hydraulic Aerator (Takes 36 tines)
23516 18" Mechanical Aerator (Takes 24 tines)
29517 24" Stand-On Aerator (Takes 36 tines)
29519 30" Stand-On Aerator (Takes 48 tines)

Price: \$170.98
Single 126-2143 Price: \$9.99 ea.

Order Number: 138-0758



Soil Cultivator Pack Kit

Includes: All rotor blades required to update your machine.
10 left blades of 114-7800, 10 right blades of 114-7801
Fits models:
23102 Soil Cultivator, Compact Utility Loader

Price: \$536.90
Single 114-7800 Price: \$29.75 ea.
Single 114-7801 Price: \$29.75 ea.

Order Number: 138-0759



40" Tiller Tine Pack Kit

Includes: All tines required to update your machine.
18 left blades of 104-2044, 18 right blades of 104-2043
Fits models:
22445 45" Tiller, Compact Utility Loader

Price: \$508.78
Single 104-2044 Price: \$16.21 ea.
Single 104-2043 Price: \$16.21 ea.

Order Number: 138-0760



Order Number	Description	Price Each	12 or more
114-4713	HYPRO-OIL 500 Hydro Oil 1 Qt.	\$12.99	\$12.00 each
114-4714	HYPRO-OIL 500 Hydro Oil 1 Gal.	\$49.99	6 or more \$44.99

Toro Dingo Tire and Rim Assemblies

Left Hand Rim & Tire Assembly

Fits Dingo Models: 22300, 22302, 22303, 22304, 22305, 22311, 22312, 22317, 22318
Includes Rim and Tire, replaces 98-2747
Order Number 144-2575 Price: \$228.75



Right Hand Rim & Tire Assembly

Fits Dingo Models: 22300, 22302, 22303, 22304, 22305, 22311, 22312, 22317, 22318
Includes Rim and Tire, Replaces 99-1447
Order Number 144-2574 Price: \$228.75



Lug Nut
Order Number
242-50
Price: \$1.93 ea.

Call 800 305 9255 | Original & Aftermarket Parts

51

SEE WHY OVER 70,000 LANDSCAPERS CHOOSE PROPARTS

ProParts Direct

288 N. Broadway
Salem, NH 03079



Z-SPRAY PARTS ARE NOW IN-STOCK!

See Page 62-63

Toro Dingo Wheel Motors

Starting at \$1,499.95

Order Number 98-2767

Wheel Motor
Fits 22306 & 22307
(200000-2400003000)



WALKER HYDRO STATIC DRIVES

Used on Walker MT, MD and MS tractors

Starting at \$1,079.95



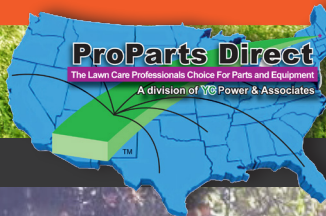
5025/5026

Follow Us On For Specials and giveaways through out the year

SHOP ONLINE AT
www.propartsdirect.net

Prices subject to change without notice. Not responsible for mis-print or typographical errors. Current catalog prices supersede all other. Printed prices expire on 11/30/2023

Visit Us Online at www.propartsdirect.net
Create an account and enjoy ProParts pricing all year long!



Need Help? Call us at 800 305 9255

RIGHT PART, RIGHT PRICE EVERY TIME

SHOP US FOR THESE MAJOR BRANDS . . . AND MORE!

ProParts Direct Catalog is for the landscape community. For old & new landscapers we pride ourselves on fostering the growth of this community. We thank @mowerman1s on his submission of photos for this years catalog. @mowerman1s is in no way a paid sponsor and we encourage you to follow his channel and others who have used our services.



Now for Some Of the Details

SHOP ONLINE 24 HOURS A DAY,
7 DAYS A WEEK

Visit: www.propartsdirect.net

Visit our website and place your orders in the shopping cart. All online orders are shipped within 3 to 5 business days. Online orders are confirmed via e-mail.

ProParts Direct can save you money on high quality replacement parts and engines, keeping you and your crew running!

We have been serving the professional lawn industry for over 85 years.

FACTORY TRAINED, AND READY TO HELP

Our Call Center is staffed with over 50 years of experience. We are courteous & hands-on experts are ready to solve your parts questions.

Shipping Policy

Most Items will be shipped at regular shipping rates. Please see website for details.

Heavy or oversized items have special shipping rates – refer to our Shipping Oversized Items / Freight policy online. You can also email us with your address & telephone number and the items you are looking to order, so we can contact you with an accurate quote on Freight items.

Call us with questions regarding shipping at 800 305 9255

